

973

United States Department of the Interior
National Park Service

RECEIVED 413

JUL 6 1995

NATIONAL REGISTER OF HISTORIC PLACES
REGISTRATION FORM

This form is for use in nominating or requesting determinations for individual properties and districts. See instructions in How to Complete the National Register of Historic Places Registration Form (National Register Bulletin 16A). Complete each item by marking "x" in the appropriate box or by entering the information requested. If any item does not apply to the property being documented, enter "N/A" for "not applicable." For functions, architectural classification, materials, and areas of significance, enter only categories and subcategories from the instructions. Place additional entries and narrative information on continuation sheets (NPS Form 10-900a). Use a typewriter, word processor, or computer, to complete all items.

INTERAGENCY RESOURCES DIVISION
NATIONAL PARK SERVICE

1. Name of Property

historic name Hays Creek Mill
other names/site number McClung's Mill; Patterson's Mill; Steele's Mill;
VDHR File No. 81-159

2. Location

street & number SR 724, .1 mi. N of jct. w/SR 726 not for publication N/A
city or town Brownsburg vicinity x
state Virginia code VA county Rockbridge code 163 zip code 24415

3. State/Federal Agency Certification

As the designated authority under the National Historic Preservation Act of 1986, as amended, I hereby certify that this x nomination request for determination of eligibility meets the documentation standards for registering properties in the National Register of Historic Places and meets the procedural and professional requirements set forth in 36 CFR Part 60. In my opinion, the property x meets does not meet the National Register Criteria. I recommend that this property be considered significant nationally statewide x locally. (See continuation sheet for additional comments.)

Julie J. Shumik Signature of certifying official/Title 6/26/95 Date

Virginia Department of Historic Resources State or Federal agency and bureau

In my opinion, the property meets does not meet the National Register criteria. (See continuation sheet for additional comments.)

Signature of commenting or other official Date

State or Federal agency and bureau

4. National Park Service Certification

I, hereby certify that this property is: Edson H. Beall 8.4.95 Entered in the National Register
 entered in the National Register See continuation sheet.
 determined eligible for the National Register See continuation sheet.
 determined not eligible for the National Register
 removed from the National Register
 other (explain):

Beall Signature of Keeper Date of Action

5. Classification

Ownership of Property (Check as many boxes as apply)

- x- private
- public-local
- public-State
- public-Federal

Category of Property (Check only one box)

- x- building(s)
- district
- site
- structure
- object

Number of Resources within Property

Table with 2 columns: Contributing, Noncontributing. Rows: buildings (4, 0), sites (0, 0), structures (0, 0), objects (0, 0), Total (4, 0)

Number of contributing resources previously listed in the National Register 0

Name of related multiple property listing (Enter "N/A" if property is not part of a multiple property listing.) N/A

6. Function or Use

Historic Functions (Enter categories from instructions)

Cat: AGRICULTURE Sub: Processing

Current Functions (Enter categories from instructions)

Cat: DOMESTIC Sub: Secondary structure

7. Description

Architectural Classification (Enter categories from instructions)

EARLY REPUBLIC: Federal

Materials (Enter categories from instructions)

foundation STONE: limestone
walls WOOD: weatherboard
roof METAL: tin
other

Narrative Description (Describe the historic and current condition of the property on one or more continuation sheets.)

United States Department of the Interior
National Park Service

**NATIONAL REGISTER OF HISTORIC PLACES
CONTINUATION SHEET**

Section 7 Page 1

<p>RECEIVED 413</p> <p>JUL 6 1995</p> <p>INTERAGENCY RESOURCES DIVISION NATIONAL PARK SERVICE</p>	<p>Hays Creek Mill Rockbridge County, Virginia</p>
---	--

SUMMARY DESCRIPTION

Hays Creek Mill is an early-nineteenth-century flour gristmill located in Rockbridge County, near Brownsburg, Virginia. A house, garage, and barn that are associated with the mill are located on the four-and-one-third-acre property. The mill is a two-and-a-half story rectangular building with a gable roof. Built entirely of tulip poplar wood, the mill structure has a raised basement of rough quarried limestone. It has one interior end chimney on the east wall that serves the former counting room or office on the first floor. The first floor has three rooms while the second and third floors are not divided. The building measures 35 feet by 45 feet in size. The mill also includes an iron overshot wheel that is perpendicular to the wall of the building and an iron conduit race. The wheel is fifteen feet in diameter and five feet thick. The race begins as an iron funnel with a diameter of two feet ten inches and then forms an open concrete flue before ending a tenth of a mile south of the property. Most of the original mill equipment was removed from the building in the twentieth century. Today the building is used for a woodworking shop and storage facility.

In addition to the mill, the nominated property includes a two-story, central-passage-plan frame house. The house, probably once the miller's house, dates to the mid-nineteenth century and was later expanded with a rear ell addition. Similar to the mill, it has a limestone foundation. There are two exterior end chimneys of coursed-rubble limestone and brick. Located between the house and the mill is a garage that once served as a corncrib. It is a rectangular frame building, 21 feet by 35 feet, with a gable roof. Today the garage has a poured concrete foundation. A barn, 32 feet by 72 feet, is located to the north of the mill, garage, and house. It is a two-story frame building with a gable roof that was probably built in the early twentieth century. Attached on the north side is a later addition that is currently used as a chicken coop.

ARCHITECTURAL DESCRIPTION

Rockbridge County land tax records show that a mill was probably built on this property about 1819. Physical evidence such as pegged windows and surrounds support this conclusion. The foundation of the mill indicates that it was enlarged on the east side of the building at an early date. This can be seen both from the interior and exterior evidence. The exterior evidence is a break in the foundation visible on the north elevation. The earliest part of the foundation, nearest to Hays Creek to the west, has beaded doors and pegged window surrounds. It also has vented openings consisting of wooden bars set into wooden frames. In the addition foundation to the east, the windows contain metal bars and nailed surrounds. This enlargement occurred sometime during the late nineteenth century. A 1902 photograph shows the mill much as it appears today. The exterior of the mill was also altered in the twentieth century. Alterations include the introduction of the iron overshot wheel that reads "manufactured by the Fitz Water Wheel Co., Hanover, PA, U.S.A." and the addition of an iron millrace. The 1902 photograph shows that the millrace was once either wood or was covered by a wooden structure. An

United States Department of the Interior
National Park Service

NATIONAL REGISTER OF HISTORIC PLACES
CONTINUATION SHEET

Section 7 Page 2

Hays Creek Mill
Rockbridge County, Virginia

overhanging porch was also added sometime after the 1902. Despite these changes, the structure has remained much the same.

The principal facade is the east gable elevation. There is one window bay in the foundation. It is an unglazed window with metal bars. Two log steps, each about four feet three inches wide, lead to the five-panel front door. Three windows on the first floor are six-light casement windows. Another bay on this floor appears in the 1902 photograph as a drop box that now is boarded up. There are two windows on the second floor, also six-light casement windows. The attic floor has two windows that are double-hung, six-over-six windows. The interior end chimney rises on this facade. Also on the east elevation is a wooden porch overhang. The porch has a tin hipped roof and one square support column set in a round concrete mold. There is also a wooden-shaft drop chute from the attic floor to the ground that was used to transport grain from outside the mill to the attic floor. The gable roof of the mill is covered with galvanized tin.

The south elevation faces the wheel and race. The wheel is surrounded by a concrete spillway. The millrace starts as a closed iron culvert supported by concrete blocks at intervals. Away from the mill it becomes an open concrete race upstream. The first floor of the south elevation has four bays, two of which are boarded up. The other two are wood-framed windows covered with screen and plastic. The three windows on the second floor are six-light casement windows. The attic has two double-hung dormer windows with six-over-six lights in each.

The west elevation, part of the earliest portion of the mill, faces Hays Creek. There are two window bays in the foundation of this elevation, which contain pegged windows with wooden bars. On the first floor there are three window bays, while the second floor has two bays, each with six-light casement windows. The attic gable has two double-hung, six-over-six windows.

The north elevation has three bays in the foundation, two open window bays, and one door bay. The window bay closest to Hays Creek is pegged with wood and has wooden faceted dowels while the other window has metal bars. The batten door located in the basement has wooden hinges. There are five bays on the first floor, two of which have been closed. The center bay contains a batten door with a six-light window in the top. The two windows on this floor are double-hung, six-over-six windows. The second floor has four bays. One bay is boarded up, while the other three contain six-light casement windows.

Access to the basement is gained through the door in the foundation on the north elevation and through a room on the first floor. The foundation wall thickness differs, depending on which stage of building is represented. The older part of the foundation is two feet five inches thick, while the newer part is one foot thick. The original basement was 35'6" x 32'2". The floor of this portion of the basement was at one time wood and some wood remnants can still be seen today. The jack arch of a fireplace that no longer exists remains in the fragment of a wall that was removed. The place where the wall was torn down and foundation extended can clearly be

United States Department of the Interior
National Park Service

NATIONAL REGISTER OF HISTORIC PLACES
CONTINUATION SHEET

Section 7 Page 3

Hays Creek Mill
Rockbridge County, Virginia

seen. The walls of the earlier basement have evidence of whitewashing that suggests that this space was an office or counting room. There is also a concrete wall that was added later to the south elevation as part of the spillway. The detailing of the original column supports in the older part of the basement differ from that in the newer section. The oldest surviving example is octagonal in section with chamfered stops, while the newer supports are square. On the west wall of this older part of the basement is a set of stone steps that lead to the first floor.

The newer part of the basement extended the mill seventeen feet to the east. There is a dirt floor and the walls have not been whitewashed. The interior chimney is laid in common bond. The detail in the columns and supports in this part of the basement is different from the earlier part. The differences suggest that the office was once in the basement and was moved to the first floor when the mill was enlarged.

The first floor of the mill has three principal rooms. The southeast room, entered through the front door, measures 23'11" x 16'7" and has interior siding. There are two windows on the east wall and two on the south wall. All are six light windows. One square support column stands in the center of the room. The exposed intermediate posts in this room are six inches by eight inches and the exposed studs are two inches by four inches. A smaller room, 16'7" x 10'2", is found to the northeast of the first room. This room, like the larger space, is clad with interior siding. There is one six-pane casement window on the east wall of this room and two windows on the south wall that look into the outer room. These two windows, as well as one window on the west wall that looks into the third principal room, are simple two-light windows. A six-over-six pane double-hung sash window is found on the north wall. This room contains the chimney on its east wall. There is evidence that there was at one time a wood heating stove in this room. The small size, presence of a chimney, evidence of a heating stove, and numerous built-in cabinets suggest that this room was used for the mill office or counting room.

A batten door leads from the southeast room into the third and largest room on the first floor. It is enclosed by portions of the north and south exterior walls and the entire exterior west wall. The room measures 35'6" x 32'4" and the studs are exposed. The corner posts in this room are ten inches square and the intermediate posts are one foot square, while the studs are uniformly four by five inches. Located in the southwest corner of this room are the wooden double-run stairs that lead to the floors above. Each tread is ten inches deep with a squared wooden hand rail. This room also contains a set of stone steps with a trap door that leads down into the basement. The intermediate columns supporting the summer beam are octagonal, resembling ones found in the basement. The columns have triangular shims at the top that can be adjusted to help strengthen the floors above if they start to sag. This feature protected the building from the heavy machinery that it was designed to contain. The four exposed down braces each measure four by six inches.

The second floor consists of a single large room. Evenly spaced holes in the floor remain from chutes that once transported grain between the floors. The summer beam runs in a east-west direction and does not appear to have been spliced or replaced. This means that this portion of

United States Department of the Interior
National Park Service

NATIONAL REGISTER OF HISTORIC PLACES
CONTINUATION SHEET

Section 7 Page 4

Hays Creek Mill
Rockbridge County, Virginia

the structure could have been built (or rebuilt) at the time that the foundation and basement were enlarged. This room is partially clad with interior siding, but most of the walls resemble the exposed walls found in the third principal room on the first floor. Two octagonal intermediate posts similar to those found on the first floor carry the load of the floor.

The attic floor is also a single large room. The roof is framed with four secondary rafters between each primary rafter. There are heavy purlins and collar beams with no ridge pole. The secondary rafters are three by five inches and the primary rafters are four inches square. The 1902 photograph shows a wooden roof that was replaced in the early 1970s with galvanized tin because of structural damage. On the east wall of the attic is a chute that is covered by a wooden encasement that drops down to the outside of the building and is located behind the wooden porch overhang. Although most of the machinery was sold off by a previous owner, the attic floor contains an old flour dresser and horsehair brushes that were used to sift the flour.

The house on the property was probably built in the mid-nineteenth century. It is a two-story frame structure with a gable roof and two exterior end chimneys. The principle facade faces east. There is a low coursed-rubble limestone foundation without a basement, and the first floor has three bays. The central five-panel door has five rectangular sidelights and six rectangular transom lights. All the windows of the principal elevation are six-over-six double-hung sash. Leading to the front door is a set of concrete steps and a concrete porch. A recent metal overhang with metal porch supports covers the entrance. The roof is covered with standing-seam tin.

The south gable end of the house faces the mill, and the north gable end faces the barn. On the south gable end each floor has a six-over-six double-hung window, while the north gable end has no such windows. Each gable, however, has two casement windows located on either side of the exterior end chimney. The chimney is made of coursed rubble limestone and brick.

The west elevation faces Hays Creek. A two-story rear ell extends from the southwest corner of the original house. This portion of the house contains a variety of original or replaced windows ranging from six-over-six double-hung sash to single-light double-hung sash windows. A porch extends the length of the addition on the south elevation.

The central passage of the house consists of two parts. The front part is seven feet wide and the back part is three feet ten inches wide. The entire passage is twenty-four feet long. The floor throughout the house consists of pine boards dressed with an eight-inch-high baseboard. A door leading into the back part of the passage, probably originally an exterior entrance, also has a six-light transom. In the back passage is a single-run stair. The steps are thirty-four inches wide with two balusters per tread supporting a circular handrail. At the end of the passage is a two-panel door leading into a bathroom that is 4'9" x 7'2" in size.

Both first-floor rooms in the main block at 14'6" x 16'. The room to the southeast of the central passage is used as a living room. Scratched into the window on the east wall window is name

United States Department of the Interior
National Park Service

NATIONAL REGISTER OF HISTORIC PLACES
CONTINUATION SHEET

Section 7 Page 5

Hays Creek Mill
Rockbridge County, Virginia

J. Beaumont and the date 1854. The room to the northeast of the hall is now used as an office for the owner of the property.

Behind the southeast room there is a dining room that is 12' x 15' in size. On the south wall the mantel survives but the fireplace has been closed. The mantel is similar in height and detail to the mantel in the living room. The six-panel door leading from the dining room into the kitchen has three glass lights. The kitchen is 15' x 8' in size. Behind the kitchen in a shed addition is a 6'6" x 9' pantry. The enclosed back porch of the house extending the length of the dining room is 15'8" x 13'.

The second floor of the house has a central passage that is seven feet wide and seventeen feet long. The rooms in the original section are identical in size and configuration to the first floor. Both are bedrooms. The mantel survives in the south bedroom, but the fireplace is blocked, and no fireplace remains in the north bedroom. At the end of the passage in the rear ell is another, larger bedroom that is 15'3" x 21' in size. A four-inch-wide chair rail survives in this room and is located at two feet two inches above the floor.

Between the house and mill is a one-story frame corncrib with vertical siding and a poured concrete foundation. The floor is elevated on the edges where the cribs once stood and grain was stored, but a large sliding door replaces the earlier entry and the building is now used as a garage.

South of the house an early-twentieth-century cow barn. It is a two-story frame building with horizontal weatherboard siding and a gable roof. Like the corncrib, it has a poured concrete foundation and probably is part of the same rebuilding. A chicken coop was added to the north side of the barn. The interior of the barn has a dirt floor and a loft. The chicken coop can be entered from the barn from a second-story loft that is now used to store hay.

8. Statement of Significance

Applicable National Register Criteria (Mark "x" in one or more boxes for the criteria qualifying the property for National Register listing)

- A Property is associated with events that have made a significant contribution to the broad patterns of our history.
B Property is associated with the lives of persons significant in our past.
x C Property embodies the distinctive characteristics of a type, period, or method of construction or represents the work of a master, or possesses high artistic values, or represents a significant and distinguishable entity whose components lack individual distinction.
D Property has yielded, or is likely to yield information important in prehistory or history.

Criteria Considerations (Mark "X" in all the boxes that apply.)

- A owned by a religious institution or used for religious purposes.
B removed from its original location.
C a birthplace or a grave.
D a cemetery.
E a reconstructed building, object, or structure.
F a commemorative property.
G less than 50 years of age or achieved significance within the past 50 years.

Areas of Significance (Enter categories from instructions)

ARCHITECTURE
INDUSTRY

Period of Significance ca. 1819-1920

Significant Dates ca. 1820
1870
1920

Significant Person (Complete if Criterion B is marked above)

N/A

Cultural Affiliation N/A

Architect/Builder unknown

Narrative Statement of Significance (Explain the significance of the property on one or more continuation sheets.)

9. Major Bibliographical References

(Cite the books, articles, and other sources used in preparing this form on one or more continuation sheets.)

- Previous documentation on file (NPS)
preliminary determination of individual listing (36 CFR 67) has been requested.
previously listed in the National Register
previously determined eligible by the National Register
designated a National Historic Landmark
recorded by Historic American Buildings Survey #
recorded by Historic American Engineering Record #

- Primary Location of Additional Data
x State Historic Preservation Office
Other State agency
Federal agency
Local government
University
Other
Name of repository:

United States Department of the Interior
National Park Service

NATIONAL REGISTER OF HISTORIC PLACES
CONTINUATION SHEET

Section 8 Page 6

Hays Creek Mill
Rockbridge County, Virginia

STATEMENT OF SIGNIFICANCE

Hays Creek Mill survives as an example of the many mills that once thrived in Rockbridge County in the eighteenth and nineteenth centuries. Over the years it was also known as Steele's Mill, Patterson's Mill, and McClung's Mill. Hays Creek Mill, in addition to the nearby Wade-Kennedy Mill, served the lower portion of Rockbridge County from the early nineteenth century to the mid-twentieth century. Built about 1819, the mill may have begun as a one-story structure on a raised basement and then was rebuilt and enlarged to a full two-story structure. Since this alteration in the 1870s, the mill has remained virtually unchanged and today possesses high integrity. Significant in the areas of architecture and industry, the mill is a typical example of the stone and timber construction used in the industrial buildings of rural Rockbridge County. Among its interesting architectural details are the octagonal support columns similar to those found in the Wade-Kennedy Mill. The Hays Creek Mill remained in operation until 1957 in a number of capacities as a grist, saw, and fulling mill. Three contributing buildings also share the property with the mill: a mid-nineteenth-century miller's house, an early-twentieth century cow barn, and a twentieth-century garage (formerly a corncrib). Today the mill complex stands as a reminder of the lively milling industry that once supported the agricultural community of Rockbridge County.

HISTORICAL BACKGROUND

Hays Creek Mill may have been built about 1819-1820, when it was owned by William Steele, Jr. At this time the property increased in value from \$113 to \$3,503, and the buildings were worth \$1,700.¹ The architectural evidence (hand-wrought nails, early batten doors, faceted dowels inserted into basement window frames on a diagonal, and pegged window surrounds) is consistent with an early-nineteenth-century period of construction. The documentary and architectural evidence contrasts with a longstanding local tradition that John Hays built the mill soon after 1739, when he acquired the property from Benjamin Borden.² This tradition, though widespread, is not true.³

In 1820, the mill appeared in the U.S. census of Rockbridge County industries as one of the largest of twenty similar mills in the county. It ground annually some twelve thousand bushels of grain, including wheat, rye, and corn, into wheat and rye flour and cornmeal. Steele employed one male worker, whom he paid about \$200 each year. The mill used water power and two pair of stones to grind the grain.⁴

In 1838, William Steele sold to his son Robert G. Steele "a certain merchant and saw mill and tract or parcel of land on which the said mill are situate . . . on the waters of Hays Creek." By 1850, Steele was leasing the property to Samuel Patterson, and in April 1851 he sold it to Patterson.⁵

United States Department of the Interior
National Park Service

NATIONAL REGISTER OF HISTORIC PLACES
CONTINUATION SHEET

Section 8 Page 7

Hays Creek Mill
Rockbridge County, Virginia

The mill was listed in the 1850 industrial census for Rockbridge County. It was one of sixteen mills recorded, and the data suggest that it no longer was one of the largest mills in the county; indeed, most of the other mills produced more. Patterson had \$6,000 in capital invested in the mill and paid two hands an average of \$35 a month each to work there. Each year the mill ground nine thousand bushels of wheat to produce 180 barrels of flour valued at \$720.⁶

The present miller's house may have been built in 1861-1862, when the value of buildings on the property rose from \$2,000 to \$5,000. At the same time, and perhaps again in 1870-1871 when the value of buildings increased from \$5,000 to \$7,000, the mill may have been enlarged.⁷

By 1870, according to the industrial census, Patterson's mill had once again become one of the leading producers among the twenty-eight mills in Rockbridge County. Operated by Alexander Patterson, the mill, powered by its eighteen-horsepower waterwheel, produced more than \$6,000 worth of flour, cornmeal, and milled oats. Patterson paid \$500 in wages annually. Patterson's capital investment had risen to \$8,000, which further suggests that he had made improvements about 1860 and 1870.⁸

In 1871, William Patterson, the son and heir of Samuel Patterson, sold the mill property to B. F. and D. B. McClung. The property remained in the McClung family until the 1920s. This span of nearly fifty years, during which the mill was known as McClung's Mill, was the longest period of family ownership in the history of the property. Although the tract once had comprised more acreage, by 1887 it was reduced to its present boundaries.⁹ Through inheritance, F. W. and B. F. McClung Jr. gained possession of the property.

The mill changed ownership several times during the next two decades. In 1920, F. W. and B. F. McClung Jr. sold the property to Robert P. Lucas, who leased it to the Brownsburg Milling Company until 1927.¹⁰ Lucas died in 1926 and his widow, Mary Lucas, sold the property to Charles B. Burner. Two years later, Burner died and after a suit involving his heirs the Rockbridge County Circuit Court decreed on 17 April 1929 that the property be sold by special commissioner M. W. Paxton Jr. W. E. Mays bought the mill and began to operate it.¹¹ Mays defaulted on his debt, however, and in a deed of trust he conveyed the property to W. S. Hopkins. It was then sold at a public auction in 1938 to the highest bidder, C. R. Swink.¹² Swink sold the mill less than a month later to C. H. and Harold Wade. C. H. Wade died in 1948 and his heirs sold his share to Harold Wade who became the sole owner. Harold Wade died in 1957 and left his share to his wife, Vinda Wade. In 1958, she sold the property to Adrien Bouche, who removed and sold most of the mill's machinery and equipment. William B. Dunlap, the current owner, bought the property in 1974 and has devoted his time to stabilizing the mill. Today he lives in the miller's house and uses the mill for storage and as a woodworking shop.

United States Department of the Interior
National Park Service

NATIONAL REGISTER OF HISTORIC PLACES
CONTINUATION SHEET

Section 8 Page 8

Hays Creek Mill
Rockbridge County, Virginia

ENDNOTES

1. Auditor of Public Accounts, Land Tax Books, Rockbridge County, 1819-1820, Virginia State Library and Archives, Richmond, Va. (LVA).
2. James W. McClung, *Historical Significance of Rockbridge County* (Staunton, Va.: 1939), 105.
3. Donna Hayes Shedd, who was conducting research on her ancestors, wrote to the current owner of the property, William B. Dunlap, that she had learned that John Hays, her seventh great-grandfather, had built a mill on the other side of Hays Creek and therefore this property and mill had not belonged to John Hays.
4. United States Census, Virginia, Industry Schedules, Rockbridge County, 1820, Reel 228, LVA.
5. Rockbridge County, Deed Book U, 1837-1839, Reel 10, p. 431, LVA; *ibid.*, Deed Book BB, 1850-1852, Reel 13.
6. United States Census, Virginia, Industry Schedules, Rockbridge County, 1850, Reel 232, LVA.
7. Auditor of Public Accounts, Land Tax Books, Rockbridge County, 1860-1861, 1870-1871, LVA.
8. United States Census, Virginia, Industry Schedules, Rockbridge County, 1870, Reel 243, LVA.
9. This information was found in the will of M. Buchanan. His property is described as lying next to the McClung property, which contained five acres. The property today contains a little over four acres.
10. Rockbridge County Deed Book 131, p. 41, Rockbridge County Courthouse, Lexington, Va.
11. Rockbridge County Deed Book 151, p. 75, Rockbridge County Courthouse, Lexington, Va.
12. Rockbridge County Deed Book 173, p. 82, Rockbridge County Courthouse, Lexington, Va.

10. Geographical Data

Acreage of Property 4.3 acres

UTM References

(Place additional UTM references on a continuation sheet)

Table with 4 columns: Zone, Easting, Northing, and a blank column. Row 1: 17, 645530, 4199740, 2. Row 2: 3, 4.

See continuation sheet.

Verbal Boundary Description

(Describe the boundaries of the property on a continuation sheet.)

Boundary Justification

(Explain why the boundaries were selected on a continuation sheet.)

11. Form Prepared By

name/title Mary Elizabeth Figgers
organization date January 15, 1991
street & number 2154 Cedar Avenue telephone
city or town Buena Vista state VA zip code 24416

Additional Documentation

Submit the following items with the completed form:

Continuation Sheets

Maps

- A USGS map (7.5 or 15 minute series) indicating the property's location.
A sketch map for historic districts and properties having large acreage or numerous resources.

Photographs

Representative black and white photographs of the property.

Additional items

(Check with the SHPO or FPO for any additional items)

Property Owner

(Complete this item at the request of the SHPO or FPO.)

name/title William B. Dunlap
street & number P. O. Box 99 telephone
city or town Brownsburg state VA zip code 24415

United States Department of the Interior
National Park Service

NATIONAL REGISTER OF HISTORIC PLACES
CONTINUATION SHEET

Section 9 & 10 Page 9

Hays Creek Mill
Rockbridge County, Virginia

MAJOR BIBLIOGRAPHICAL REFERENCES

- Auditor of Public Accounts. Land Tax Books. Rockbridge County. 1819-1820, 1860-1861, 1870-1871. Library of Virginia, Richmond, Va. (LVA).
- Branch, Ruth Anderson McCulloch. *One Hundred Historic Sites and Structures in Rockbridge County*. Lexington, Va.: Association for the Preservation of Virginia Antiquities, 1979.
- Evans, Oliver. *The Young Mill-Wright and Miller's Guide*. New York: Arno Press, 1972.
- McClung, James W. *Historical Significance of Rockbridge County*. Staunton, Va.: McClure Company, Inc., 1939.
- Morten, Oren F. *A History of Rockbridge County, Virginia*. Baltimore: Regional Publishing Company, 1980.
- Rockbridge County. Deed Books. Rockbridge County Courthouse. Lexington, Va.
- Rockbridge County. Deed Book U. 1837-1839. Reel 10. LVA.
- Tompkins, Edmund Pendleton. *Rockbridge County, Virginia*. Richmond: Whittet and Shepperson, 1952.
- United States Census. Virginia. Industry Schedules. Rockbridge County. 1820, 1850, 1870. Reels 228, 232, 243. LVA.

GEOGRAPHICAL DATA

Verbal Boundary Description

The nominated area is defined in Rockbridge County Tax Maps as 25-((A))-23.

Boundary Justification

Of the original 150 acres once under single ownership, the 4.34 acres included in this nomination are the remaining portion containing the mill and three associated outbuildings historically associated with the property.

United States Department of the Interior
National Park Service

NATIONAL REGISTER OF HISTORIC PLACES
CONTINUATION SHEET

Section Photos Page 10

Hays Creek Mill
Rockbridge County, Virginia

View of Mill, garage, house, barn; camera facing west
Photo 1 of 12

View of Water pipes and mill; camera facing west
Photo 2 of 12

View of Mill; camera facing east
Photo 3 of 12

View of Mill and Hays Creek; camera facing southeast
Photo 4 of 12

View of west elevation of mill showing addition to foundation
Photo 5 of 12

View of east elevation of mill with mill equipment
Photo 6 of 12

View of east elevation of mill with water wheel
Photo 7 of 12

View of first floor of mill with stair to second floor and grain hopper
Photo 8 of 12

View of grain hopper with graffiti
Photo 9 of 12

View of second floor of mill
Photo 10 of 12

View of second floor of mill with stair to third floor
Photo 11 of 12

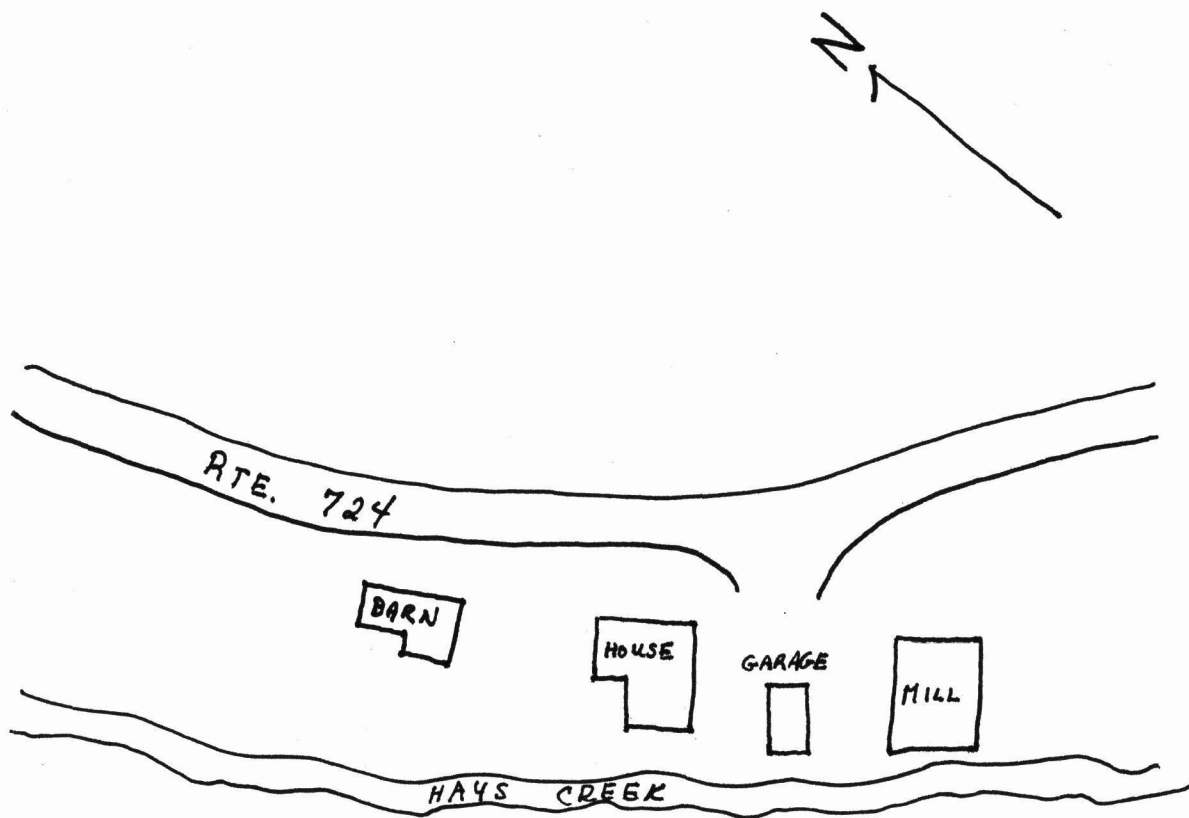
View of third floor of mill
Photo 12 of 12

United States Department of the Interior
National Park Service

National Register of Historic Places Continuation Sheet

Section number Sketch Page 11
Map

Hays Creek Mill
Rockbridge County, Virginia



SITE PLAN

HAYES CREEK MILL
ROCKBRIDGE CO., VA.

NOT TO SCALE

UNITED STATES DEPARTMENT OF THE INTERIOR
NATIONAL PARK SERVICE

NATIONAL REGISTER OF HISTORIC PLACES
EVALUATION/RETURN SHEET

REQUESTED ACTION: NOMINATION

PROPERTY Hays Creek Mill
NAME:

MULTIPLE
NAME:

STATE & COUNTY: VIRGINIA, Rockbridge

DATE RECEIVED: 7/06/95 DATE OF PENDING LIST: 7/18/95
DATE OF 16TH DAY: 8/03/95 DATE OF 45TH DAY: 8/20/95
DATE OF WEEKLY LIST:

REFERENCE NUMBER: 95000973

NOMINATOR: STATE

REASONS FOR REVIEW:

APPEAL: N DATA PROBLEM: N LANDSCAPE: N LESS THAN 50 YEARS: N
OTHER: N PDIL: N PERIOD: N PROGRAM UNAPPROVED: N
REQUEST: N SAMPLE: N SLR DRAFT: N NATIONAL: N

COMMENT WAIVER: N

ACCEPT RETURN REJECT 8.4.95 DATE

ABSTRACT/SUMMARY COMMENTS: **Entered in the
National Register**

RECOM./CRITERIA _____

REVIEWER _____ DISCIPLINE _____

TELEPHONE _____ DATE _____

DOCUMENTATION see attached comments Y/N see attached SLR Y/N



Hays Creek Mill
Rockbridge Co. VA

1 of 12



Hays Creek Mill
Rockbridge Co. VA

2 OF 12



Hays Creek Mill
Rockbridge Co. VA

3 of 12



Hays Creek Mill
Rockbridge Co. VA

4 OF 12



Hays Creek Mill
Rockbridge Co VA

5 of 12



Hays Creek Mill
Rockbridge Co VA

6 of 12



Hays Creek Mill

Rockbridge Co. VA

7 of 12



JAMESTOWN

JAMESTOWN
KARHONEN
1918

VALTIO

Hays Creek Mill

Rockbridge Co. VA

8 OF 12

July 15 - 1931

Page 11

July 14 1931
John Davidson
Topham N.S.P.

John Davidson

John Davidson

1931
John Davidson
Ryher signed

L. LAM
Aug. 27 1931

Hays Creek Mill
Rockbridge Co. VA

9 OF 12



Hays Creek Mill
Rockbridge Co. VA

10 OF 12



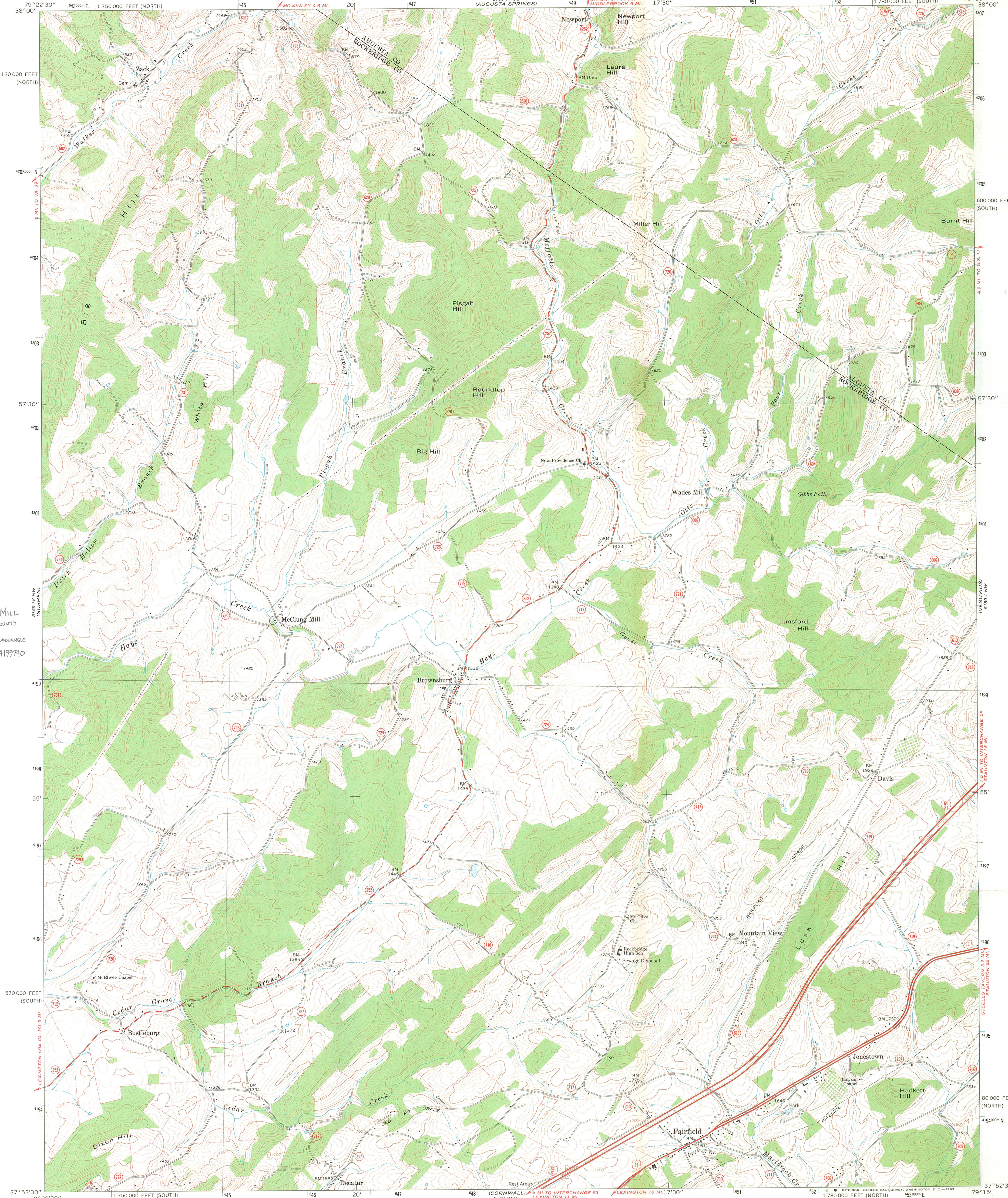
Hays Creek Mill
Rockbridge Co. VA

11 OF 12



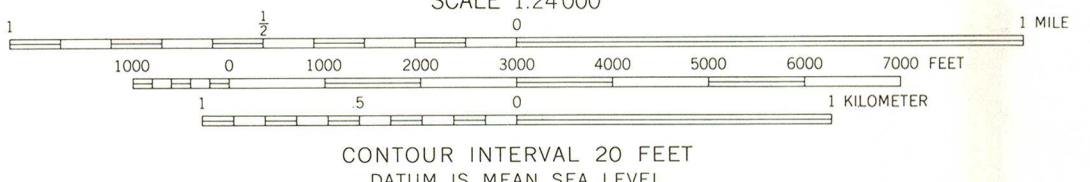
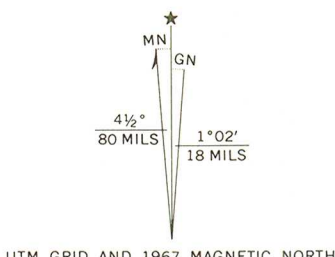
Hays Creek Mill
Rockbridge Co. VA

12 OF 12



HAYS CREEK MILL
ROCKBRIDGE COUNTY
BROWNSBURG QUADRANGLE
17/645530/4199740

Mapped, edited, and published by the Geological Survey
Control by USGS and USC&GS
Topography by photogrammetric methods from aerial
photographs taken 1964. Field checked 1967
Polyconic projection. 1927 North American datum
10,000-foot grids based on Virginia coordinate system,
south and north zones
1000-meter Universal Transverse Mercator grid ticks,
zone 17, shown in blue
Fine red dashed lines indicate selected fence and field lines where
generally visible on aerial photographs. This information is unchecked



ROAD CLASSIFICATION

Primary highway, all weather, hard surface	Light-duty road, all weather, improved surface
Secondary highway, all weather, hard surface	Unimproved road, fair or dry weather
Interstate Route	U. S. Route
	State Route



THIS MAP COMPLIES WITH NATIONAL MAP ACCURACY STANDARDS
FOR SALE BY U. S. GEOLOGICAL SURVEY, WASHINGTON, D. C. 20242
AND VIRGINIA DIVISION OF MINERAL RESOURCES, CHARLOTTESVILLE, VIRGINIA 22903
A FOLDER DESCRIBING TOPOGRAPHIC MAPS AND SYMBOLS IS AVAILABLE ON REQUEST

BROWNSBURG, VA.
NE/4 LEXINGTON 15' QUADRANGLE
N3752.5-W7915.7/5

1967
AMS 5159 IV NE-SERIES V834



COMMONWEALTH of VIRGINIA

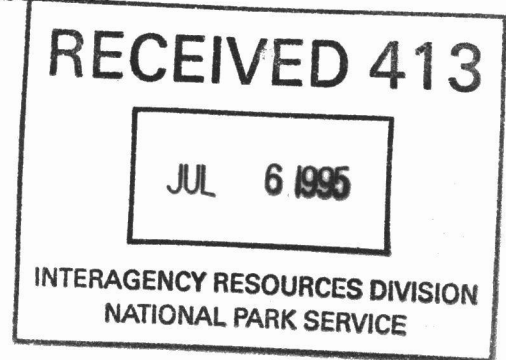
H. Alexander Wise, Jr., Director

221 Governor Street
Richmond, Virginia 23219

Department of Historic Resources

June 23, 1995

Ms. Carol Shull
National Register
National Park Service
800 North Capitol Street
Washington, DC 20001



RE: Hays Creek Mill, Rockbridge County, Virginia

Dear Ms. Shull:

The enclosed nomination, Hays Creek Mill, Rockbridge County, Virginia, is submitted for inclusion on the National Register of Historic Places. This nomination has been considered by the State Review Board and there have been no owner objections received.

Should you have any questions, please do not hesitate to contact me.

Sincerely,

A handwritten signature in cursive script that reads "James Christian Hill".

James Christian Hill
National Register Coordinator

Enclosure