

392

United States Department of the Interior
National Park Service

NATIONAL REGISTER OF HISTORIC PLACES
REGISTRATION FORM

This form is for use in nominating or requesting determinations for individual properties and districts. See instructions in How to Complete the National Register of Historic Places Registration Form (National Register Bulletin 16A). Complete each item by marking "x" in the appropriate box or by entering the information requested. If any item does not apply to the property being documented, enter "N/A" for "Not Applicable." For functions, architectural classification, materials, and areas of significance, enter only categories and subcategories from the instructions. Place additional entries and narrative items on continuation sheets (NPS Form 10-900a). Use a typewriter, word processor, or computer, to complete all items.

1. Name of Property

historic name Whaleyville Historic District

other names/site number VDHR File No. 133-694

2. Location

street & number Jct. US 13 with SR 616 not for publication N/A
city or town Suffolk vicinity N/A
state Virginia code VA county Suffolk (independent code 800 zip code 23432
city)

3. State/Federal Agency Certification

As the designated authority under the National Historic Preservation Act of 1986, as amended, I hereby certify that this x nomination request for determination of eligibility meets the documentation standards for registering properties in the National Register of Historic Places and meets the procedural and professional requirements set forth in 36 CFR Part 60. In my opinion, the property x meets does not meet the National Register Criteria. I recommend that this property be considered significant nationally statewide x locally. (See continuation sheet for additional comments.)

Julie W. Smith 3-1-95
Signature/Title of certifying official Date
DIRECTOR, DIVISION OF SURVEY & REGISTER
Virginia Department of Historic Resources
State or Federal agency and bureau

In my opinion, the property meets does not meet the National Register criteria. (See continuation sheet for additional comments.)

Signature of commenting or other official _____ Date _____
State or Federal agency and bureau _____

4. National Park Service Certification

I, hereby certify that this property is: Entered in the
 entered in the National Register National Register
 See continuation sheet.
 determined eligible for the
 National Register
 See continuation sheet.
 determined not eligible for the
 National Register
 removed from the National Register
 other (explain):

Edson K. Beall 4-7-95
Signature of Keeper Date
for of Action

5. Classification

Ownership of Property (Check as many boxes as apply)

- private
- public-local
- public-State
- public-Federal

Category of Property (Check only one box)

- building(s)
- district
- site
- structure
- object

Number of Resources within Property

Contributing	Noncontributing	
103	24	buildings
0	0	sites
0	0	structures
0	0	objects
103	24	Total

Number of contributing resources previously listed in the National Register 0

Name of related multiple property listing (Enter "N/A" if property is not part of a multiple property listing.) N/A

6. Function or Use

Historic Functions (Enter categories from instructions)

- | | |
|----------------|-----------------------|
| Cat: DOMESTIC | Sub: Single dwelling |
| RELIGION | Religious structure |
| TRANSPORTATION | Rail-related |
| COMMERCE | Specialty store |
| | Financial institution |
| AGRICULTURE | Processing |

Current Functions (Enter categories from instructions)

- | | |
|---------------|----------------------|
| Cat: DOMESTIC | Sub: Single dwelling |
| RELIGION | Religious structure |
| COMMERCE | Specialty store |
| AGRICULTURE | Processing |

7. Description

Architectural Classification (Enter categories from instructions)

LATE VICTORIAN: Queen Anne
 LATE 19TH AND EARLY 20TH CENTURY AMERICAN MOVEMENTS: Bungalow/Craftsman
 OTHER: I-house
Side-passage, Single-pile plan

Materials (Enter categories from instructions)

foundation BRICK
 walls BRICK
WOOD: weatherboard
 roof METAL
 other _____

Narrative Description (Describe the historic and current condition of the property on one or more continuation sheets.)

United States Department of the Interior
National Park Service

RECEIVED 413

MAR 10 1985

**NATIONAL REGISTER OF HISTORIC PLACES
CONTINUATION SHEET**

Section 7 Page 1

Whaleyville Historic District
INTERAGENCY RESOURCES DIVISION
City of Suffolk, Virginia
NATIONAL PARK SERVICE

SUMMARY DESCRIPTION

Whaleyville is located approximately twelve miles south of downtown Suffolk on U. S. Route 13 at its intersection with State Route 616. A total of 127 buildings are within the historic district of Whaleyville including 103 contributing and twenty-four noncontributing buildings. Whaleyville at one time was large enough to incorporate as a town at the turn of the century. Its growth centered around the timber industry in the late nineteenth century which is reflected in the simple vernacular architecture still existing in the community today. Most structures have similar setbacks and spacing which, with mature trees and landscaping, create a cohesive appearance in the village. There is a variety of architectural styles and plan types including typical national styles that were popular at the turn of the century as well as numerous, small-scale, frame, vernacular structures from the African-American community.

ARCHITECTURAL ANALYSIS

A variety of vernacular houses were built in Whaleyville between 1880 and 1920. These dwellings are wood frame and generally two stories with two or three bays and a gable roof. Six-over-six double-sash windows were common but two-over-two and four-over-four double-sash windows were also used. All of these houses have front porches and brick chimneys, and several have entry sidelights and transoms. A two-story, two-bay, wood frame example can be found at 6401 Whaleyville Boulevard (133-306). It features a wraparound porch with Doric columns set on a shingled parapet, a side passage, entry sidelights and transom, and a rear corbeled chimney cap. The house at 6415 Whaleyville Boulevard (133-300) is another example of a vernacular dwelling. This wood-frame, two-story, two-bay, front-gabled dwelling has an attic-story diamond-shaped window, a molded cornice with returns, and a wraparound porch with chamfered posts.

Vernacular I-houses were also popular in Whaleyville in this era. These dwellings are of wood-frame construction, although several of them have been covered with artificial siding. While most of the I-houses are two stories with three bays, there are a few larger five-bay dwellings. Gable roofs are covered with standing-seam metal. Corbeled end chimneys, entries with a transom and sidelights, and front porches are common elements. The I-house at 6416 Whaleyville Boulevard (133-264), which was built around 1900, exemplifies a decorated version of this type. This frame dwelling has two stories, five bays, a gable roof, and a Classical Revival porch with Roman Doric Columns.

The vernacular residences on Whaleyville Boulevard that were built in the early part of the twentieth century are wood frame weatherboarded structures and range in height from 1 1/2 to two stories. These buildings have front porches and gable roofs, and their decorative features include boxed cornices with returns, multi-light transoms, sidelights, corbeled chimneys, and diamond-shaped windows. A more unusual vernacular house was built at 6419 Whaleyville Boulevard (133-298) between 1920 and 1940. This wood frame house is 1 1/2 stories with three bays, a front gable, and a vernacular porch. The porch has Roman Doric columns and a simple balustrade, while the front gable has double windows and a boxed cornice with returns.

Most of the vernacular houses on the side streets in the community are more modest than those on the main road. The side roads in the Whaleyville district include Whaley Street,

United States Department of the Interior
National Park Service

NATIONAL REGISTER OF HISTORIC PLACES
CONTINUATION SHEET

Section 7 Page 2

Whaleyville Historic District
City of Suffolk, Virginia

Mill Lane, Mineral Spring Road, and Robertson and Sumner streets. Many of the houses on these lanes are early-twentieth-century, one-story, frame, vernacular cottages with gable roofs, brick flutes, one-over-one windows, and front porches. Weatherboard siding and standing-seam metal roofs are commonly used on these buildings. The typical one-story, three-bay, frame cottage with weatherboard siding at 112 Robertson Street (133-611) has a simple hipped roof, a front porch, a corbeled central flue, and a rear ell. A more ornate cottage was constructed at 4831 Mineral Spring Road (133-321). It has 1 1/2 stories, three bays, a gable roof, two interior corbeled flues, and a central front gable. The vernacular porch with turned posts, the central front gable with a diamond-shaped window, and the molded cornice with returns are among the simple decorative features of this house. There are several two-story dwellings scattered among the smaller houses. These structures generally seem to date to a slightly earlier period, but they have many of the same features.

As the population in Whaleyville grew during the railroad era, a greater need for religious structures developed. Three churches were built in the community between 1870 and 1920 and still remain in use. They are St. Stephens Holiness Church (133-296) at 6435 Whaleyville Boulevard, and the Mineral Spring Baptist Church (133-279) on Mineral Spring Road. All three churches are wood frame, vernacular, Gothic Revival buildings with front square towers, pointed-arched windows, and gable roofs.

The social needs of the residents were partially fulfilled during this time by the Odd Fellow and Masonic lodges. The Odd Fellows Lodge (133-280) on Mineral Spring Road was built around the turn of the century. This two-story structure has a front gable roof, six-over-six windows, and a large rear addition that doubled the size of the structure. The McAlister Masonic Lodge (133-650) at 6425 Whaleyville Boulevard was built between 1900 and 1920. This structure is similar to the Odd Fellows Lodge but was constructed of brick. It has a front gable, two stories, a stepped-parapet false front, and two front entrances.

Local businesses were established in the town to support the growing population. These included a grocery store, a bank, and a general merchandise store from the early twentieth century. These structures were built close to the sidewalks with dirt lots behind the buildings for parking. The Bank of Whaleyville at 6431 Whaleyville Boulevard (133-294) is a one-story, vernacular, brick structure that was built between 1900 and 1910. For a while court was held in this building on a weekly basis. The structure is decorated with an elaborately corbeled cornice, segmentally-arched openings, and a central tablet. On the adjacent corner is a similar two-story, masonry, commercial structure known as the Whaleyville Store (133-80). It has a parapet roof, arched windows, a recessed entrance, and large display windows. The interiors of both structures have been remodeled over the years.

Residential growth continued in Whaleyville during the early twentieth century and is indicated by a number of American Foursquare and Bungalow-styled residences. The American Foursquare dwellings have hipped roofs, wood-framed front porches and corbeled flues or chimneys. An example of this style was built at 6418 Whaleyville Boulevard (133-263). A typical bungalow was constructed at 4848 Mineral Spring Road (133-319). It is a 1 1/2-story, three-bay structure with a corbeled chimney, a gabled dormer, simple brackets, and a Bungalow-style porch. The features found on some other examples of bungalows include entry transoms and sidelights, corbeled flues and exposed rafters.

**United States Department of the Interior
National Park Service**

**NATIONAL REGISTER OF HISTORIC PLACES
CONTINUATION SHEET**

Section 7 Page 3

**Whaleyville Historic District
City of Suffolk, Virginia**

Several noncontributing structures have been built among the earlier buildings of Whaleyville. The recent commercial buildings are all one-story structures and usually have flat roofs. The construction material varies with use but brick and concrete block are common.

There are also various types of noncontributing residential buildings in Whaleyville. Most are simple, one-story, rectangular structures with gable roofs. Many of these have double or bay windows, and simple front stoops.

WHALEYVILLE PROPERTY DESCRIPTIONS LIST
(* Indicates noncontributing properties)

Mineral Spring Road

4810 Mineral Spring Rd.

133-615: Residential; ca. 1900-1920; wood frame with weatherboard; 1 story; 3-bay, symmetrical facade; vernacular porch; interior flue; rear addition; vernacular cottage.

4811 Mineral Spring Rd.

133-616: Residential; ca. 1890-1910; wood frame with weatherboard; 2 stories; 2-bay, symmetrical facade; metal gable roof; Bungalow porch; vernacular.

4812 Mineral Spring Rd.

133-450: Residential; ca. 1890-1920; wood frame with weatherboard; 1 story; 3-bay, symmetrical facade; metal gable roof; vernacular porch; interior end chimneys; east screened porch; vernacular.

4813 Mineral Spring Rd.

133-522: Residential; ca. 1900-1920; wood frame with weatherboard; 2 stories; 2-bay, asymmetrical facade; metal front gable roof; vernacular porch; central flue; vernacular.

4815 Mineral Spring Rd.

133-617: Residential; ca. 1910-1930; wood frame with weatherboard; 1 1/2 stories; 3-bay, symmetrical facade; composition shingle, gable roof with a central front gable; Bungalow porch; rear addition; Bungalow cottage.

4816 Mineral Spring Rd.

133-523: Residential; ca. 1910-1930; wood frame with weatherboard; 2 stories; 2-bay, symmetrical facade; metal hipped roof; vernacular porch; rear porch; rear addition; vernacular.

4824 Mineral Spring Rd.

133-618: Residential; ca. 1900-1920; wood frame with asbestos siding; 2 stories; 3-bay, asymmetrical facade; metal gable roof; vernacular porch; interior end chimney; rear addition; vernacular.

4825 Mineral Spring Rd.

*Residential; ca. 1970; 1-story brick dwelling; noncontributing.

4826 Mineral Spring Rd.

133-596: Residential; ca. 1910-1930; wood frame with asbestos shingles; 2 stories; 3-bay, symmetrical facade; metal gable roof; vernacular porch; 2 interior end chimneys; exposed rafters; I-house.

4827 Mineral Spring Rd.

133-619: Residential; ca. 1900-1920; wood frame with artificial siding; 1 story; 3-bay, symmetrical facade; metal gable roof; vernacular porch; 2 end flues; small attic windows; rear addition; vernacular cottage.

4832 Mineral Spring Rd.

**United States Department of the Interior
National Park Service**

**NATIONAL REGISTER OF HISTORIC PLACES
CONTINUATION SHEET**

Section 7 Page 4

**Whaleyville Historic District
City of Suffolk, Virginia**

133-320: Residential; ca. 1890-1920; wood frame with asbestos shingles; 2 stories; 3-bay, asymmetrical facade; metal gable roof; vernacular porch; central chimney; boxed cornice; vernacular I-house.

4835 Mineral Spring Rd.

133-652: Residential; ca. 1900-1920; wood frame with artificial siding; 1 1/2 stories; 3-bay, asymmetrical facade; metal gable roof; vernacular porch; diamond-shape eave window; 2 interior flues; molded cornice; vernacular cottage.

-double frame garage.

Mineral Spring Rd., Mineral Spring Odd Fellows Lodge

133-280: Lodge; ca. 1880-1920; wood frame with weatherboard; 2 stories; 3-bay, symmetrical facade; front gable with standing-seam metal roof; center chimney; large front addition.

Mineral Spring Baptist Church Mineral Spring Rd.

133-279: Church; ca. 1870-1915; wood frame with weatherboard; 1 story; 5-bay, asymmetrical facade; metal gable roof with cross gable; 3-story tower; lancet windows; stained glass; vernacular Gothic Revival.

4840 Mineral Spring Rd.

*Residential; ca. 1950; 1-story; frame dwelling; noncontributing.

4848 Mineral Spring Rd.

133-319: Residential; ca. 1920-1930; wood frame with weatherboard; 1 1/2 stories; 3-bay, symmetrical facade; metal gable roof; Bungalow porch; corbeled chimney; bracketed eaves; Bungalow.

Robertson Street

108 Robertson Street

133-608: Residential; ca. 1910-1930; wood frame with weatherboard; 1 story; 3-bay, symmetrical facade; vernacular Bungalow porch; 2 interior flues; rear ell with a small rear addition; vernacular cottage.

-frame garage.

109 Robertson Street

133-628: Residential; ca. 1910-1930; wood frame with weatherboard; 1 story; 3-bay, symmetrical facade; vernacular porch; rear ell; vernacular cottage.

110 Robertson Street

133-609: Residential; ca. 1910-1930; wood frame with artificial siding; 1 story; 3-bay, symmetrical facade; metal gable roof; vernacular porch; central chimney; rear ell; vernacular cottage.

111 Robertson Street

133-610: Residential; ca. 1910-1930; wood frame with German siding; 1 story; 3-bay, symmetrical facade; metal gable roof; vernacular porch; central chimney; rear ell; vernacular cottage.

112 Robertson Street

133-611: Residential; ca. 1900-1920; wood frame with weatherboard; 1 story; 3-bay, symmetrical facade; metal gable roof; vernacular porch; central flue; vernacular cottage.

114 Robertson Street

133-612: Residential; ca. 1920-1940; wood frame with artificial siding; 1 story; 3-bay, symmetrical facade; metal gable roof; front stoop; 2 flues; rear ell with screened porch and large rear addition; vernacular cottage.

115 Robertson Street

133-613: Residential; ca. 1900-1920; wood frame with weatherboard; 1 story; 3-bay, symmetrical facade; metal gable roof; vernacular porch; central flue; 2 rear additions; vernacular cottage.

116 Robertson Street

United States Department of the Interior
National Park Service

NATIONAL REGISTER OF HISTORIC PLACES
CONTINUATION SHEET

Section 7 Page 5

Whaleyville Historic District
City of Suffolk, Virginia

133-614: Residential; ca. 1910-1930; wood frame with weatherboard; 1 story; 3-bay, symmetrical facade; composition shingle, hipped roof; Bungalow porch; 2 interior flues; rear addition; Bungalow cottage.

Sumner Street

108 Sumner Street

133-620: Residential; ca. 1890-1910; wood frame with weatherboard; 2 story; 3-bay, symmetrical facade; metal gable roof; vernacular porch; rear ell; 2 interior flues; 1-house.

111 Sumner Street

133-621: Residential; ca. 1900-1920; wood frame with artificial siding; 1 story; 3-bay, symmetrical facade; metal gable roof; vernacular porch; interior flue; rear ell; vernacular cottage.
-*noncontributing metal garage.

112 Sumner Street

133-622: Residential; ca. 1900-1920; wood frame with weatherboard; 1 story; 3-bay, symmetrical facade; composition shingle, gable roof; vernacular porch; central flue; vernacular cottage.

113 Sumner Street

133-623: Residential; ca. 1890-1910; wood frame with weatherboard; 1 story; 3-bay, symmetrical facade; metal gable roof; vernacular porch; rear ell with porch; vernacular cottage.

114 Sumner Street

133-624: Residential; ca. 1910-1930; wood frame with weatherboard; 1 story; 3-bay, symmetrical facade; metal gable roof; vernacular porch; interior flue; vernacular cottage.

115 Sumner Street

133-625: Residential; ca. 1900-1910; wood frame with weatherboard; 1 story; 3-bay, symmetrical facade; metal gable roof; vernacular porch; interior chimney; rear ell; vernacular cottage.
-frame garage.

119 Sumner Street

133-626: Residential; ca. 1900-1920; Wood frame with weatherboard; 1 story; 3-bay, asymmetrical facade; metal gable roof; vernacular porch; central chimney; vernacular cottage.

Whaley Street

117 Whaley Street

133-591: Residential; ca. 1910-1930; wood frame with artificial siding; 2 stories; 2-bay, symmetrical facade; metal hipped roof; vernacular porch; overhanging roof; interior chimney; boxed cornice; vernacular Foursquare.

120 Whaley Street

133-592: Residential; ca. 1900-1920; wood frame with artificial siding; 2 stories; 2-bay, symmetrical facade; vernacular porch; interior corbeled chimney; sidelights; vernacular.
-*noncontributing frame garage.

121 Whaley Street

*Residential; ca. 1950; 1-story, brick dwelling; noncontributing.

122 Whaley Street

133-593: Residential; ca. 1890-1910; wood frame with asbestos siding; 2 stories; 2-bay, symmetrical facade; metal front gable roof; vernacular porch; interior chimney; sidelights; rear addition; vernacular.

123 Whaley Street

United States Department of the Interior
National Park Service

NATIONAL REGISTER OF HISTORIC PLACES
CONTINUATION SHEET

Section 7 Page 6

Whaleyville Historic District
City of Suffolk, Virginia

133-594: Residential; ca. 1910-1930; wood frame with artificial siding; 2 stories; 2-bay, symmetrical facade; vernacular porch; rear section; central chimney; decorative metal trim at top of roof; American Foursquare. -garage with vertical siding.

126 Whaley Street

*Residential; ca. 1960-1980; 1-story, brick dwelling; noncontributing.

127 Whaley Street

*Residential; ca. 1950-1970; 1-story dwelling with artificial siding; noncontributing.

128 Whaley Street

133-595: Residential; ca. 1910-1930; wood frame with artificial siding; 1 story; 3-bay, symmetrical facade; composition shingle front gable roof; Bungalow porch; interior brick flue; Bungalow cottage. -*noncontributing gambrel-roofed garage.

129 Whaley Street

133-281: Residential; ca. 1900-1920; wood frame with weatherboard; 2 stories; 2-bay, symmetrical facade; metal gable roof; Colonial Revival wraparound porch; 3-part side window; front gable with diamond-shaped window; transom; vernacular.

130 Whaley Street

133-597: Residential; ca. 1930-1950; wood frame with artificial siding; 1 story; 5-bay, symmetrical facade; metal gable roof; central chimney; vernacular. -attached garage.

131 Whaley Street

133-598: Residential; ca. 1920-1940; wood frame with artificial siding; 1 story; 3-bay, symmetrical facade; vernacular porch; Bungalow cottage. -*noncontributing frame garage.

132 Whaley Street

133-599: Residential; ca. 1930-1950; wood frame with weatherboard; 1 story; 5 bay, symmetrical facade; metal gable roof; front stoop; central flue; vernacular. -attached garage.

133 Whaley Street

*Residential; ca. 1960-1980; 1-story, brick dwelling; noncontributing.

134 Whaley Street

133-600: Residential; ca. 1930-1950; wood frame with artificial siding; 1 story; 3-bay, symmetrical facade; composition shingle, gable roof; vernacular porch; interior flue; double front windows; vernacular cottage.

135 Whaley Street

*Residential; ca. 1950-1970; 1-story, frame dwelling with artificial siding; noncontributing.

136 Whaley Street

133-601: Residential; ca. 1910-1930; wood frame with weatherboard; 1 story; 5-bay, symmetrical facade; metal gable roof; front stoop; exposed rafters; end brackets; central brick flue; vernacular cottage.

137 Whaley Street

133-602: Residential; ca. 1920-1940; wood frame with artificial siding; 1 story; 3-bay, symmetrical facade; composition shingle, pyramidal roof; vernacular porch; rear addition; vernacular. -*noncontributing metal garage.

200 Whaley Street

133-603: Residential; ca. 1920-1940; wood frame with weatherboard; 1 story; 5-bay, symmetrical facade; metal gable roof; vernacular porch; exposed rafters; eave brackets; interior flue; vernacular cottage.

United States Department of the Interior
National Park Service

NATIONAL REGISTER OF HISTORIC PLACES
CONTINUATION SHEET

Section 7 Page 7

Whaleyville Historic District
City of Suffolk, Virginia

-frame garage.

201 Whaley Street

133-604: Residential; ca. 1890-1910; wood frame with weatherboard; 2 stories; 3-bay, symmetrical facade; metal gable roof; vernacular porch; interior chimney; boxed cornice with returns; rear addition; vernacular.

Whaleyville Boulevard

6300 Whaleyville Blvd.

133-278: Residential; ca. 1910-1925; wood frame with bricktex; 2 stories; 3-bay, symmetrical facade; metal gable roof; Bungalow porch; 2 corbeled interior chimneys; double front windows; rear ell; vernacular I-house.
-*noncontributing metal garage.

6302 Whaleyville Blvd.

133-277: Residential; ca. 1880-1920; wood frame with artificial siding; 1 story; 3-bay, symmetrical facade; metal gable roof; decorated vernacular porch; interior end chimney; rear ell; sidelights; vernacular.
-2 frame garages.

6303 Whaleyville Blvd.

133-318: Residential; ca. 1890-1910; wood frame with artificial siding; 2 stories; 3-bay, symmetrical facade; metal gable roof; decorated porch; 2 interior end chimneys; transom and sidelights; vernacular I-house.

6304 Whaleyville Blvd.

133-276: Residential; ca. 1880-1910; wood frame with artificial siding; 1 story; 3-bay, symmetrical facade; metal gable roof; decorated vernacular porch; exterior end chimney; rear ell; sidelights; vernacular cottage.
-*noncontributing metal equipment building.

6305 Whaleyville Blvd.

133-317: Residential; ca. 1890-1920; wood frame with weatherboard; 2 stories; 3-bay, symmetrical facade; metal gable roof; side porch; front gable; hipped roof over entry; vernacular.

6306 Whaleyville Blvd.

133-275: Residential; ca. 1880-1910; wood frame with artificial siding; 2 stories; 2-bay, symmetrical facade; metal gable roof; vernacular porch; interior end chimney; rear ell; vernacular.
-garage.

6307 Whaleyville Blvd.

133-316: Residential; ca. 1890-1920; wood frame with artificial siding; 2 stories; 3-bay, symmetrical facade; metal gable roof; vernacular porch; rear ell; 1 exterior end chimney; 1 interior chimney; sidelights; vernacular I-house.
-*noncontributing 2-car garage.

6308 Whaleyville Blvd.

133-274: Residential; ca. 1900-1930; wood frame with artificial siding; 1 story; 3-bay, symmetrical facade; metal pyramidal roof; vernacular porch; 2 interior chimneys; vernacular cottage.

6309 Whaleyville Blvd.

133-315: Residential; ca. 1920-1940; wood frame with artificial siding; 1 1/2 stories; 3-bay, asymmetrical facade; composition shingle, gable roof; Bungalow porch; front dormer with brackets; central flue; Bungalow.

6310 Whaleyville Blvd.

133-273: Residential; ca. 1890-1910; wood frame with artificial siding; 2 stories; 3-bay, symmetrical facade; metal gable roof; decorated vernacular porch; interior end chimneys; rear ell; cornice with returns; vernacular I-house.
-*noncontributing garage.

United States Department of the Interior
National Park Service

NATIONAL REGISTER OF HISTORIC PLACES
CONTINUATION SHEET

Section 7 Page 8

Whaleyville Historic District
City of Suffolk, Virginia

6311 Whaleyville Blvd.

133-314: Residential; ca. 1890-1910; wood frame with artificial siding; 2 stories; 2-bay, asymmetrical facade; metal gable roof; vernacular porch; entry transom and sidelights; interior flue; vernacular.
-combination garage and shed.

6313 Whaleyville Blvd.

133-313: Residential; ca. 1930-1940; wood frame with weatherboard; 1 1/2 stories; 4-bay, asymmetrical facade; composition shingle, gable roof; vernacular porch; corbeled flue; front dormer with large brackets; vernacular Bungalow.

6314 Whaleyville Blvd.

133-271: Residential; ca. 1880-1920; wood frame with artificial siding; 1 story; 3-bay, symmetrical facade; metal pyramidal roof; decorated vernacular porch; 2 interior corbeled chimneys; entry transom and sidelights; vernacular.

6315 Whaleyville Blvd.

*Commercial; ca. 1950; 1-story, frame building; noncontributing.

6319 Whaleyville Blvd.

133-312: Residential; ca. 1910-1930; wood frame with artificial siding; 2 stories; 2-bay, asymmetrical facade; metal pyramidal roof; wraparound porch; 2 flues; American Foursquare.

6320 Whaleyville Blvd.

133-270: Residential; ca. 1880-1910; wood frame with artificial siding; 2 stories; 2-bay, asymmetrical facade; metal gable roof; vernacular porch; sidelights; exterior end chimney; vernacular.

6321 Whaleyville Blvd.

133-311: Residential; ca. 1920-1940; wood frame with artificial siding; 1 1/2 stories; 3-bay, asymmetrical facade; composition shingle, gable roof; Bungalow porch; corbeled flue; carport with brick columns supporting wood posts; Bungalow.

Whaleyville Blvd., Whaleyville United Methodist Church

133-272: Church; ca. 1884; wood frame with artificial siding; 1 1/2 stories; 5-bay, asymmetrical facade; gable roof with standing-seam metal; lancet-arched stained glass windows; rose window; belfry; vernacular Gothic Revival; large addition designed in similar form as church.

6322 Whaleyville Blvd.

133-269: Residential; ca. 1870-1910; wood frame with artificial siding; 2 stories; 2 bays; metal gable roof; Bungalow porch; exterior end chimney; rear addition; vernacular.

6323 Whaleyville Blvd.

133-310: Residential; ca. 1890-1910; wood frame with weatherboard; 2 stories; 3-bay, symmetrical facade; metal gable roof; Bungalow porch; interior end chimney; entry transom and sidelights; vernacular I-house.

6325 Whaleyville Blvd.

133-309: Residential; ca. 1920-1930; wood frame with weatherboard; 1 1/2 stories; 3-bay, symmetrical facade; metal gable roof; Bungalow porch; front dormer with exposed rafters and large brackets; Bungalow.

6326 Whaleyville Blvd.

133-268: Residential; ca. 1890-1910; wood frame with weatherboard; 1 1/2 stories; 3-bay, symmetrical facade; metal hipped roof with front and side gables; Colonial Revival porch; 2 interior chimneys; pointed eave window; entry transom; rear addition; vernacular.
-frame garage.

6327 Whaleyville Blvd.

133-308: Residential; ca. 1910-1930; wood frame with artificial siding; 2 stories; 2-bay, symmetrical facade; metal pyramidal roof; vernacular porch; corbeled chimney; overhanging eaves; American Foursquare.

United States Department of the Interior
National Park Service

NATIONAL REGISTER OF HISTORIC PLACES
CONTINUATION SHEET

Section 7 Page 9

Whaleyville Historic District
City of Suffolk, Virginia

6328 Whaleyville Blvd.

133-267: Residential; ca. 1880-1910; wood frame with weatherboard; 2 stories; 2-bay, asymmetrical facade; metal gable roof; Bungalow porch; exterior end chimney; rear addition; vernacular.

6329 Whaleyville Blvd.

133-307: Residential; ca. 1880-1910; wood frame with artificial siding; 2 stories; 3-bay, symmetrical facade; metal gable roof; vernacular porch; 2 central corbeled flues; transom and sidelights; vernacular I-house.
-small workshop matches the house.

6401 Whaleyville Blvd.

133-306: Residential; ca. 1890-1920; wood frame with weatherboard; 2 stories; 2-bay, asymmetrical facade; metal gable roof; wraparound porch; sidelights and transom; rear corbeled chimney; molded cornice; vernacular.
-garage.

6403 Whaleyville Blvd.

133-305: Residential; ca. 1890-1910; wood frame with weatherboard; 2 stories; 3-bay, symmetrical facade; metal gable roof; vernacular porch; decorative window caps; bracketed eaves; two exterior end chimneys; entry transom and sidelights; vernacular I-house.

6404 Whaleyville Blvd.

133-266: Residential; ca. 1890-1910; wood frame with weatherboard; 1 story; 3-bay, symmetrical facade; metal pyramidal roof; decorated vernacular porch; entry transom and sidelights; interior chimney; rear addition; vernacular.

6405 Whaleyville Blvd.

*Residential; ca. 1970; 1 1/2-story, brick dwelling; noncontributing.

6407 Whaleyville Blvd.

133-304: Residential; ca. 1910-1920; wood frame with weatherboard; 2 stories; 2-bay, asymmetrical facade; metal gable roof; vernacular porch; rear ell with porch; multi-light transom and sidelights; vernacular.

6408 Whaleyville Blvd.

*Residential; ca. 1970; 1 1/2-story, brick dwelling; noncontributing.

6409 Whaleyville Blvd.

133-303: Residential; ca. 1910-1920; wood frame with artificial siding; 2 stories; 3-bay, asymmetrical facade; metal pyramidal roof; Colonial Revival wraparound porch; corbeled chimney; molded cornice; American Foursquare.

6410 Whaleyville Blvd.

*Residential; ca. 1950; 1 1/2-story, frame dwelling, noncontributing.

6411 Whaleyville Blvd.

133-302: Residential; ca. 1880-1910; wood frame with weatherboard; 2 stories; 3-bay, symmetrical facade; metal pyramidal roof; Colonial Revival porch; window caps; decorative brackets; entry transom and sidelights; corbeled flue; decorated vernacular.

6412 Whaleyville Blvd.

133-265: Residential; ca. 1910-1940; wood frame with weatherboard; 1 1/2 stories; 3-bay, symmetrical facade; metal gable roof; vernacular Colonial Revival porch; central chimney; entry transom and sidelights; vernacular Bungalow.
-*noncontributing metal garage.

6413 Whaleyville Blvd.

United States Department of the Interior
National Park Service

NATIONAL REGISTER OF HISTORIC PLACES
CONTINUATION SHEET

Section 7 Page 10

Whaleyville Historic District
City of Suffolk, Virginia

133-301: Residential; ca. 1890-1910; wood frame with weatherboard; 2 stories; 3-bay, symmetrical facade; composition shingle, gable roof; vernacular porch; two brick flues; double-light entry transom and sidelights; vernacular I-house.

6414 Whaleyville Blvd.

*Residential; ca. 1960; 1 1/2-story, brick dwelling; noncontributing.

6415 Whaleyville Blvd.

133-300: Residential; ca. 1890-1920; wood frame with weatherboard; 2 stories; 2-bay, asymmetrical facade; metal gable roof; wraparound porch; louvered blinds; diamond-shaped attic window; front gable; vernacular.

6416 Whaleyville Blvd.

133-264: Residential; ca. 1890-1910; wood frame with weatherboard; 2 stories; 5-bay, asymmetrical facade; metal gable roof; Classical Revival porch; interior chimneys; bay at southwest corner; Decorated vernacular I-house.

-frame garage.

6417 Whaleyville Blvd.

133-299: Residential; ca. 1900-1920; wood frame with weatherboard; 1 story; 3-bay, symmetrical facade; metal gable roof; vernacular porch; 2 interior end flues; wood louvered blinds; vernacular cottage.

6418 Whaleyville Blvd.

133-263: Residential; ca. 1920-1940; wood frame with weatherboard; 2 1/2 stories; 3-bay, symmetrical facade; composition shingle, hipped roof; Classical Revival porch; 7-light entry transom and 10-light sidelights; second-story entrance has French doors with sidelights; American Foursquare.

6419 Whaleyville Blvd.

133-298: Residential; ca. 1920-1940; wood frame with weatherboard; 1 1/2 stories; 3-bay, symmetrical facade; metal gable roof; vernacular porch; corbeled chimney; boxed cornice with returns; vernacular.

6420 Whaleyville Blvd.

133-262: Residential; ca. 1920-1940; wood frame with weatherboard; 2 1/2 stories; 2-bay, asymmetrical facade; composition shingle, pyramidal roof; Bungalow porch; interior chimney; dormers; American Foursquare.

-frame garage.

6425 Whaleyville Blvd., McAlister Masonic Lodge

133-650: Commercial; ca. 1900-1920; all stretcher brick; 2 stories; 4-bay, symmetrical facade; stepped parapet on false front; two front entrances; presently used for a post office; vernacular commercial.

6431 Whaleyville Blvd., Bank of Whaleyville

133-294: Commercial; ca. 1900-1910; 7-course American bond brick; 1 story; 3-bay, symmetrical facade; metal flat roof; heavily corbeled cornice; segmentally arched openings.

6433 Whaleyville Blvd., Whaleyville Store

133-80: Commercial; ca. 1900-1910; brick; 2 stories; 3-bay, asymmetrical facade; metal gable roof with a stepped false front; segmentally arched windows; vernacular commercial.

6435 Whaleyville Blvd.

133-651: Commercial; ca. 1920-1940; wood frame with weatherboard; 1 story; 2-bay, asymmetrical facade; metal front-gable roof; partially enclosed vernacular porch; front exterior flue; double side door; vernacular commercial.

6437 Whaleyville Blvd., St. Stephen's Church

133-296: Church; ca. 1900-1920; wood frame with weatherboard; 1 story; 3-bay, symmetrical facade; gable roof with standing seam metal; several colored-glass, pointed-arched windows.

United States Department of the Interior
National Park Service

NATIONAL REGISTER OF HISTORIC PLACES
CONTINUATION SHEET

Section 7 Page 11

Whaleyville Historic District
City of Suffolk, Virginia

Whaleyville Blvd., Sovran Bank.

*Commercial; ca. 1970; one-story, brick building; noncontributing.

6517 Whaleyville Blvd.

133-297: Residential; ca. 1940-1950; wood frame with weatherboard; 2 stories; 3-bay, symmetrical facade; composition shingle, gable roof; rear ell; front stoop; vernacular.

Whaleyville Blvd., Chesapeake & Potomac Telephone Co.

*Commercial; ca. 1970; one-story, brick building; noncontributing.

=====
8. Statement of Significance
=====

Applicable National Register Criteria (Mark "x" in one or more boxes for the criteria qualifying the property for National Register listing)

- A Property is associated with events that have made a significant contribution to the broad patterns of our history.
- B Property is associated with the lives of persons significant in our past.
- C Property embodies the distinctive characteristics of a type, period, or method of construction or represents the work of a master, or possesses high artistic values, or represents a significant and distinguishable entity whose components lack individual distinction.
- D Property has yielded, or is likely to yield information important in prehistory or history.

Criteria Considerations (Mark "X" in all the boxes that apply.)

- A owned by a religious institution or used for religious purposes.
- B removed from its original location.
- C a birthplace or a grave.
- D a cemetery.
- E a reconstructed building, object, or structure.
- F a commemorative property.
- G less than 50 years of age or achieved significance within the past 50 years.

Areas of Significance (Enter categories from instructions)

ARCHITECTURE

Period of Significance 1874-1944

Significant Dates 1874
1877
1884

Significant Person (Complete if Criterion B is marked above)

N/A

Cultural Affiliation N/A

Architect/Builder unknown

Narrative Statement of Significance (Explain the significance of the property on one or more continuation sheets.)

=====
9. Major Bibliographical References
=====

(Cite the books, articles, and other sources used in preparing this form on one or more continuation sheets.)

- Previous documentation on file (NPS)
- preliminary determination of individual listing (36 CFR 67) has been requested.
 - previously listed in the National Register
 - previously determined eligible by the National Register
 - designated a National Historic Landmark
 - recorded by Historic American Buildings Survey # _____
 - recorded by Historic American Engineering Record # _____

- Primary Location of Additional Data
- State Historic Preservation Office
 - Other State agency
 - Federal agency
 - Local government
 - University
 - Other
- Name of repository: _____

United States Department of the Interior
National Park Service

**NATIONAL REGISTER OF HISTORIC PLACES
CONTINUATION SHEET**

Section 8 Page 12

**Whaleyville Historic District
City of Suffolk, Virginia**

STATEMENT OF SIGNIFICANCE

Located in the southern part of the former Nansemond County, now the city of Suffolk, Virginia, the community of Whaleyville grew as a center for an important and productive timber trade in the late nineteenth century. The community was named after Samuel Whaley, who purchased a farm here in 1877 and established a sawmill, but the major growth of the town and the lumbering industry occurred after Whaley sold the timber rights of his land to the Jackson Brothers in Maryland.

The Jackson Brothers established a modern lumber mill and brought workers here from Maryland. The construction of the Norfolk and Carolina Railroad through Whaleyville in 1884 to help transport and market the lumber products further sparked the growth of the village. The Jackson Brothers moved their operations to North Carolina in 1919, but still Whaleyville remained a center of agricultural and lumbering trade. The architectural fabric reflects the boom years of Whaleyville in the late nineteenth and early twentieth century, when a large number of residences, a bank, and several churches were built. Whaleyville's isolated location in the rural southern part of the city of Suffolk has resulted in the preservation of much of its historic fabric. The district retains the cohesive character of a small, turn-of-the-century, rural, railroad and industrial community.

HISTORICAL BACKGROUND

The community of Whaleyville is located in the south-central part of former Nansemond County, now the city of Suffolk. In the colonial period, the early settlement of the county occurred more in the northern section, near the Nansemond and Chuckatuck Rivers which provided access to the waterways at Hampton Roads. The southern part of the county contained swamp lands, including the Dismal Swamp, with their rich timber resources, particularly cypress. By 1847, the land in the present Whaleyville area had begun to be developed for both farming and logging.¹

Seth Whaley purchased a farm in this area in 1877, and built a sawmill to service his lumber business. The town that developed in this area, along the Suffolk-Sumerton-Winton, North Carolina Highway, was later named Whaleyville, after Seth Whaley. Although Whaley continued to operate his sawmill, he sold his timber interests to the Jackson Brothers, a timber company located in Salisbury, Maryland.

The Village of Whaleyville developed during the late nineteenth and early twentieth centuries in connection with the thriving lumber trade. The Jackson Brothers, who ran the largest timber business in the community, sought actively to develop and market their timber products. When their operations began in Nansemond County, the company brought many workers to Whaleyville, contributing to the growth in population. To market their products, the Jackson Brothers soon built a narrow-gauge railroad to haul timber to Suffolk. In 1884, the Norfolk and Carolina Railroad, later the Atlantic Coast Line, constructed an improved railroad through Whaleyville, replacing the old narrow gauge.²

With the railroad, Whaleyville became an important trading center in the southern part of the county, expanding the markets of the timber industry. It was also during this time that many farms were converted to lumber operations. The railroad carried logs from as far away as

United States Department of the Interior
National Park Service

NATIONAL REGISTER OF HISTORIC PLACES
CONTINUATION SHEET

Section 8 Page 13

Whaleyville Historic District
City of Suffolk, Virginia

eight miles to the mill and then carried lumber from the Whaleyville area to the Nansemond Wharf near Suffolk.³

The village boomed after the completion of the larger railroad in 1884. During that year, the Jackson Brothers Company built a larger, modern saw mill and soon opened a substantial commissary store in Whaleyville. Several other stores, businesses, and a Masonic lodge were established in the late nineteenth century, as the community developed a large trade with area farmers. That same year also witnessed the organization of the local Methodist Episcopal Church, under the leadership of Seth Whaley. The majority of the Maryland residents who moved to the area with the Jackson Brothers belonged to this faith. Whaleyville's growth continued into the early twentieth century, with the construction of a bank in 1907. The county school board selected Whaleyville as the location of one of the new consolidated district high schools, which was built there in 1915.⁴

In 1919, the Jackson Brothers closed their lumber mill in Whaleyville and moved their operations to Fayetteville, North Carolina. Many of the residents left the town at this time. The mill manager left the bricks from the mill for the local African-American community to build their own school.

Although lumbering continued in the countryside around Whaleyville, the village began to depend increasingly on trade with the surrounding agricultural community. By this time, cotton had become an important cash crop in the area. The railroad also provided good transportation facilities for the emerging truck farming business, which included potatoes, beets, cabbage, kale, peas, beans, squash, and melons. A 1928 study of Nansemond County noted that there were five to six hundred residents still living in Whaleyville. At this time, the community had a cotton gin, peanut storage warehouses, two churches, and "one of the best consolidated schools in the county."⁵

Peanut production, once an important local crop in the area, is becoming popular again. The Golden Peanut Company, located on Mineral Spring Road, has been in operation for around thirty years. Today, the farming and lumber operations continue in the countryside surrounding Whaleyville, and the village remains a center of trade in the southern part of the city of Suffolk.

ENDNOTES

1. R. Moore Williams and John E. Martin, *Nansemond County and Suffolk, Virginia: History and Geography*, (Suffolk, Virginia: Chamber of Commerce of Suffolk, Virginia, 1928), pp. 1-4; Kermit Hobbs and Williams A. Paquette, *Suffolk: A Pictorial History*, (Norfolk/Virginia Beach: The Donning Company Publishers, 1987), p. 156.

2. Hobbs and Paquette, p. 156.

3. Williams and Martin, p. 13; W. E. McClenney, "History of Suffolk, Virginia," in Nansemond River Power Squadron, "Flag Day 1986," (Suffolk, Virginia, 1986, original history notes from 1930), p.23.

4. MacClenney, p. 23; Hobbs and Paquette, p. 156; "Sketchbook '91: Painting a Portrait of Suffolk," (*Suffolk, Virginia-Herald* supplement, 28 August 1991), p. 4-A.

5. Hobbs and Paquette, p. 156; Williams and Martin, p. 12.

United States Department of the Interior
National Park Service

NATIONAL REGISTER OF HISTORIC PLACES
CONTINUATION SHEET

Section 8 Page 14

Whaleyville Historic District
City of Suffolk, Virginia

MAJOR BIBLIOGRAPHICAL REFERENCES

- Burton, Ann H., ed. *History of Suffolk and Nansemond County, Virginia*. Suffolk, Virginia: Phelps Ideas, 1970.
- Contois-Maguire, Carole. *Suffolk Journal*. 2 vols. Suffolk, Virginia: Privately printed, 1986, 1988.
- Cormier, Steven A. *The Siege of Suffolk: The Forgotten Campaign, April 11 - May 4*. Lynchburg, Virginia: H. E. Howard, Inc., 1989.
- Dunn, Joseph B. *The History of Nansemond County, Virginia*. Privately printed, 1907.
- Frazier Associates. "Reconnaissance Survey Report: Northern Section, City of Suffolk, Virginia." Staunton, Virginia: 1988, Location: Virginia Department of Historic Resources, Richmond, Virginia.
- Frazier Associates. "Reconnaissance Survey Report: Southern Section, City of Suffolk, Virginia." Staunton, Virginia: 1989, Location: Virginia Department of Historic Resources, Richmond, Virginia.
- Hobbs, Kermit, and Paquette, William A. *Suffolk: A Pictorial History*. Norfolk/Virginia Beach: The Donning Company Publishers, 1987.
- "Howell Has Seen Many Changes in Seventy-Plus Years as Farmer." *Suffolk, Virginia News-Herald*, 26 February 1989, p. 2E.
- Jordan, M.D. William Turner. *A Record of Farms and their Owners in Lower Parish of Nansemond County, Virginia*. Suffolk, Virginia: Suffolk-Nansemond Historical Society, 1968.
- MacClenny, W. E. *Flag Day, Suffolk, Virginia, June 12, 1976*. Suffolk, Virginia: Nansemond River Power Squadron and Suffolk Bicentennial Commission, 1976.
- "Sketchbook '91: Painting a Portrait of Suffolk." a supplement to the *Suffolk, Virginia News-Herald*, 28 August 1991.
- Suffolk-Nansemond Historical Society. "Information on the Churches in Suffolk Gathered by the Suffolk-Nansemond Historical Society for Exhibit on Suffolk Churches", Riddick's Folly, Suffolk Virginia.
- Whichard Rogers Dey, ed. *The History of Lower Tidewater, Virginia*. 2 vols. New York: Lewis Historical Publishing Company, 1959.
- Williams, R. Moore and Martin, John E. *Nansemond County and Suffolk, Virginia: History and Geography*. Suffolk, Virginia: Chamber of Commerce of Suffolk, Virginia, 1928.

**United States Department of the Interior
National Park Service**

**NATIONAL REGISTER OF HISTORIC PLACES
CONTINUATION SHEET**

Section 8 Page 15

**Whaleyville Historic District
City of Suffolk, Virginia**

GEOGRAPHICAL DATA

UTM References

A	18/349680/4050840
B	18/349820/4050800
C	18/350020/4050630
D	18/349960/4050560
E	18/349360/4050320
F	18/349160/4050210
G	18/349120/4050240
H	18/348990/4050380
I	18/348940/4050430
J	18/348920/4050490
K	18/348870/4050550
L	18/348940/4050610
M	18/349040/4050610

Verbal Boundary Description

The boundary of the Whaleyville Historic District is shown on the accompanying tax parcel map entitled Whaleyville Borough - Insert 64A1.

Boundary Justification

The boundaries of the Whaleyville Historic District include a small commercial core at the intersection of Whaleyville Boulevard and Mineral Spring Road and the radiating late-nineteenth and early-twentieth-century neighborhoods around it. The boundaries were drawn to exclude noncontributing properties or empty lots.

United States Department of the Interior
National Park Service

**NATIONAL REGISTER OF HISTORIC PLACES
CONTINUATION SHEET**

Section 8 Page 16

**Whaleyville Historic District
City of Suffolk, Virginia**

PHOTOGRAPHS

**Whaleyville Historic District
City of Suffolk, Virginia**

Nancy Shareff of Frazier Associates, Photographer, February 1992
Negatives on file with the DHR collection at the Library of Virginia, Richmond, Virginia
(The above information is the same for all of the following photographs.)

Photograph 1 of 8
View of 6408 Whaleyville Boulevard, northwest facade
Negative Number: 11829/30A
VDHR File Number: N/A--noncontributing

Photograph 2 of 8
View of Whaley Street Streetscape, view facing west
Negative Number: 11832/31
VDHR File Number: N/A

Photograph 3 of 8
View of Whaleyville Boulevard Streetscape, view of east side
Negative Number: 11832/24
VDHR File Number: NA

Photograph 4 of 8
View of 6413 Whaleyville Boulevard, east facade
Negative Number: 11832/30
VDHR File Number: 133-301

Photograph 5 of 8
View of 6411 Whaleyville Boulevard, east facade
Negative Number: 11832/29
VDHR File Number: 133-302

Photograph 6 of 8
View of 6321 Whaleyville Boulevard, south and east elevations
Negative Number: 11832/25
VDHR File Number: 133-311

Photograph 7 of 8
View of Bank of Whaleyville, Whaleyville Boulevard, southeast and northeast elevations
Negative Number: 11829/33A
VDHR File Number: 133-294

Photograph 8 of 8
View of Chesapeake & Potomac Telephone Co., Whaleyville Boulevard, southeast facade
Negative Number: 11829/32A
VDHR File Number: N/A--noncontributing

10. Geographical Data

Acreage of Property 39.5 acres

UTM References

(Place additional UTM references on a continuation sheet)

Table with 6 columns: Zone, Easting, Northing, Zone, Easting, Northing. Contains 4 rows of UTM coordinates.

x See continuation sheet.

Verbal Boundary Description

(Describe the boundaries of the property on a continuation sheet.)

Boundary Justification

(Explain why the boundaries were selected on a continuation sheet.)

11. Form Prepared By

name/title William T. Frazier/Ann McCleary/Nancy Shareff
organization Frazier Associates date July 1992
street & number 213 North Augusta Street telephone 703-886-6230
city or town Staunton state VA zip code 24401

Additional Documentation

Submit the following items with the completed form:

Continuation Sheets

Maps

- A USGS map (7.5 or 15 minute series) indicating the property's location.
A sketch map for historic districts and properties having large acreage or numerous resources.

Photographs

Representative black and white photographs of the property.

Additional items

(Check with the SHPO or FPO for any additional items)

Property Owner

(Complete this item at the request of the SHPO or FPO.)

name
street & number telephone
city or town state zip code

Paperwork Reduction Act Statement: This information is being collected for applications to the National Register of Historic Places to nominate properties for listing or determine eligibility for listing, to list properties, and to amend existing listings. Response to this request is required to obtain a benefit in accordance with the National Historic Preservation Act, as amended (16 U.S.C. 470 et seq.).
Estimated Burden Statement: Public reporting burden for this form is estimated to average 18.1 hours per response including the time for reviewing instructions, gathering and maintaining data, and completing and reviewing the form. Direct comments regarding this burden estimate or any aspect of this form to the Chief, Administrative Services Division, National Park Service, P.O. Box 37127, Washington, DC 20013-7127; and the Office of Management and Budget, Paperwork Reductions Project (1024-0018), Washington, DC 20503.

UNITED STATES DEPARTMENT OF THE INTERIOR
NATIONAL PARK SERVICE

NATIONAL REGISTER OF HISTORIC PLACES
EVALUATION/RETURN SHEET

REQUESTED ACTION: NOMINATION

PROPERTY Whaleyville Historic District
NAME:

MULTIPLE
NAME:

STATE & COUNTY: VIRGINIA, Suffolk

DATE RECEIVED: 3/10/95 DATE OF PENDING LIST: 3/21/95
DATE OF 16TH DAY: 4/06/95 DATE OF 45TH DAY: 4/24/95
DATE OF WEEKLY LIST:

REFERENCE NUMBER: 95000392

NOMINATOR: STATE

REASONS FOR REVIEW:

APPEAL: N DATA PROBLEM: N LANDSCAPE: N LESS THAN 50 YEARS: N
OTHER: N PDIL: N PERIOD: N PROGRAM UNAPPROVED: N
REQUEST: N SAMPLE: N SLR DRAFT: N NATIONAL: N

COMMENT WAIVER: N

ACCEPT RETURN REJECT 4.7.95 DATE

Entered in the
National Register

ABSTRACT/SUMMARY COMMENTS:

RECOM./CRITERIA _____

REVIEWER _____ DISCIPLINE _____

TELEPHONE _____ DATE _____

DOCUMENTATION see attached comments Y/N see attached SLR Y/N



6408 WHALEYVILLE BLVD - Non Contrib

WHALEYVILLE HISTORIC DISTRICT
CITY OF SUFFOLK, VIRGINIA

PHOTO # 1 of 8

#1 NON-CONTRIBUTING
6408 Whaleyville Blvd.
Whaleyville



WHALEY STREET STREETScape

WHALEYVILLE

WHALEY STREET STREETScape

WHALEYVILLE HISTORIC DISTRICT

CITY OF SUFFOLK, VIRGINIA

PHOTO # 2 of 8

#2

Whaley St. Streetscape
Whaleyville

Whaley
Whaley
Whaley



4

3

WHALEYVILLE
WHALEY

WHALEYVILLE BLVD STREETSCAPE

WHALEYVILLE HISTORIC DISTRICT

CITY OF SUFFOLK, VIRGINIA

PHOTO # 3 OF 8

#3

Whaleyville Blvd. Streetscape

Whaleyville



#5
#7

6413 WHALEYVILLE BLVD
WHALEYVILLE HISTORIC DISTRICT
CITY OF SUFFOLK HISTORIC DISTRICT
PHOTO #4 OF 8

#4. 6413 Whaleyville Blvd.
Whaleyville



#6
#5
6411 WHALEYVILLE
WHALEYVILLE
6411 WHALEYVILLE BLVD

ALLEY

WHALEYVILLE HISTORIC DISTRICT

CITY OF SUFFOLK, VIRGINIA

PHOTO #5 OF 8

#5
6411 Whaleyville Blvd
Whaleyville



9
6

6321 WHALEYVILLE BLVD

WHALEYVILLE

6321 WHALEYVILLE BLVD

WHALEYVILLE HISTORIC DISTRICT

CITY OF SUFFOLK, VIRGINIA

PHOTO # 6 of 8

6 6321 Whaleyville Blvd.

Whaleyville



HADIC

#1

BANK OF WHALEYVILLE

WHALEYVILLE BLVD

BANK OF WHALEYVILLE

WHALEYVILLE BLVD

WHALEYVILLE HISTORIC DISTRICT

CITY OF SUFFOLK, VIRGINIA

PHOTO # 7 of 8

#1 BANK OF WHALEYVILLE

WHALEYVILLE BLVD

WHALEYVILLE



C & P TELEPHONE Co - Non Contributing
WHALEYVILLE BLVD
WHALEYVILLE HISTORIC DISTRICT
CITY OF SUFFOLK, VIRGINIA.

PHOTO # 8 of 8

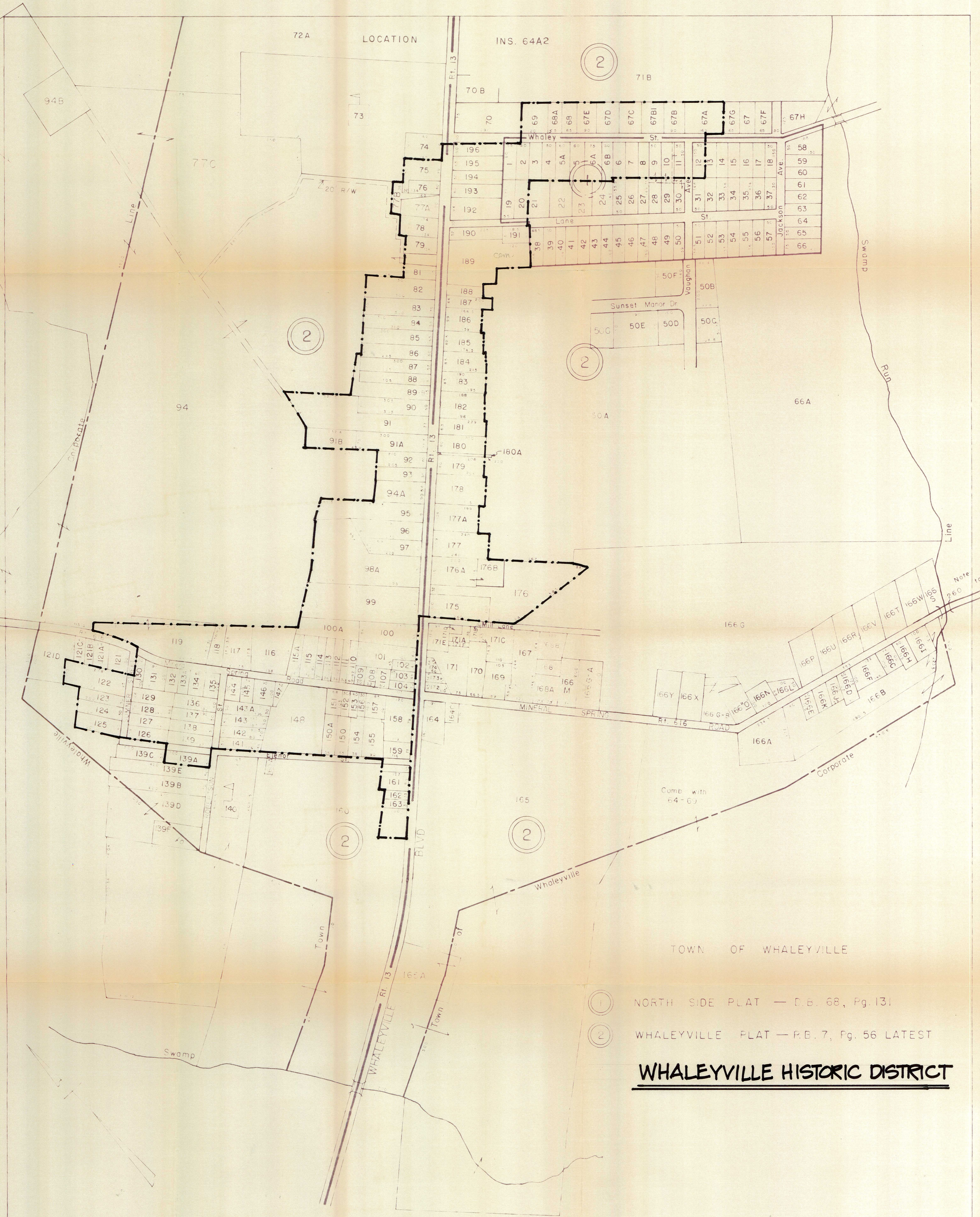
THIS PAPER
MANUFACTURED
BY KODAK

THIS PAPER
MANUFACTURED
BY KODAK

THIS PAPER
MANUFACTURED
BY KODAK

THIS PAPER
MANUFACTURED
BY KODAK

Whaleyville Blvd



72A LOCATION

INS. 64A2

71B

2

2

2

2

TOWN OF WHALEYVILLE

- ① NORTH SIDE PLAT — D.B. 68, Pg. 131
- ② WHALEYVILLE PLAT — P.B. 7, Pg. 56 LATEST

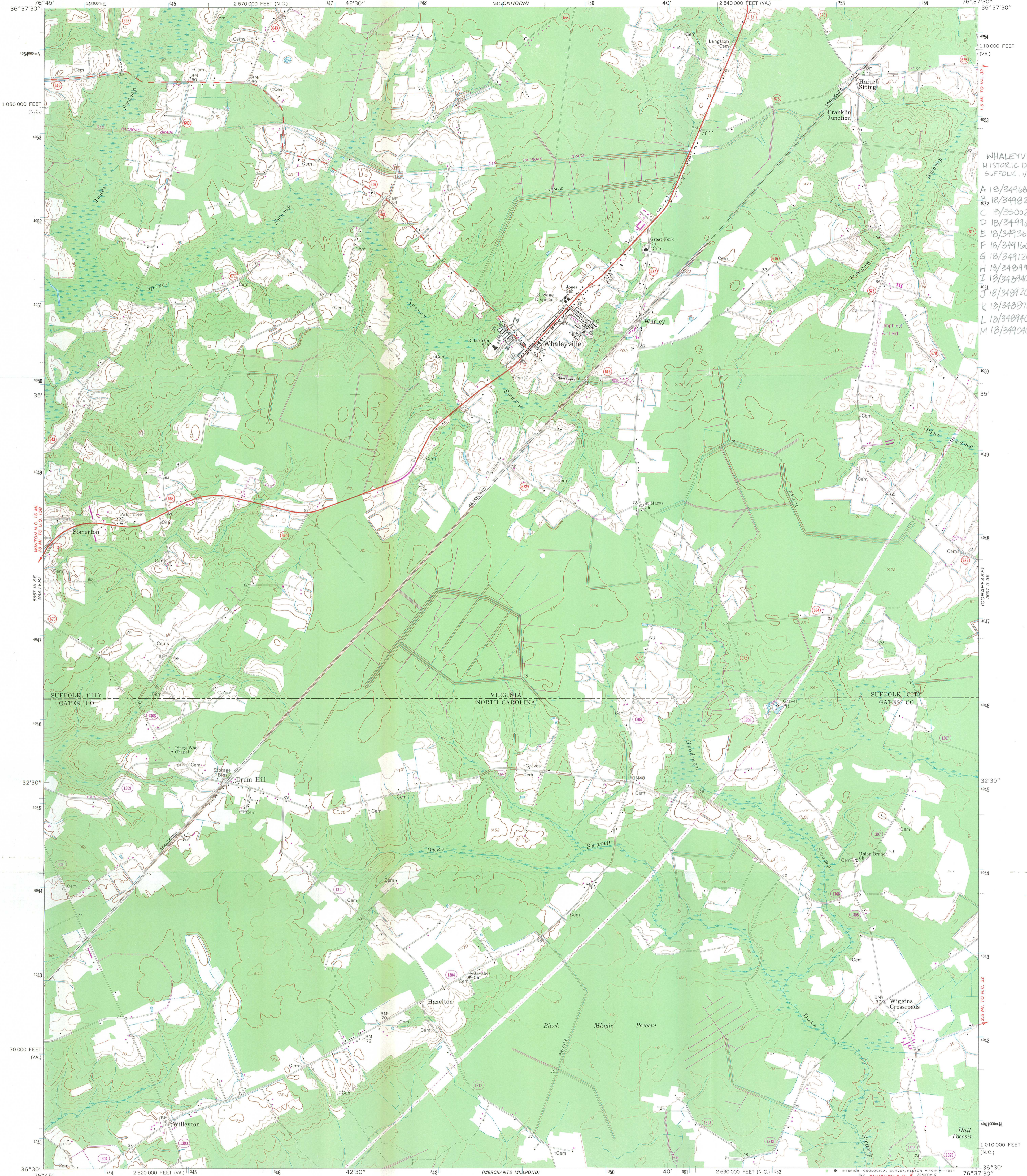
WHALEYVILLE HISTORIC DISTRICT

REVISED 5/64, 50, 51, 53, 60, 1/66, 12/75

SCALE IN FEET
0 200 400 600 800

WHALEYVILLE BOROUGH

INSERT 64AI



WHALEYVILLE
HISTORIC DISTRICT
SUFFOLK, VIRGINIA

A 18/349680/4050840
B 18/349820/4050800
C 18/350020/4050630
D 18/349960/4050500
E 18/349360/4050320
F 18/349160/4050210
G 18/349120/4050240
H 18/348990/4050380
I 18/348940/4050430
J 18/348920/4050490
K 18/348870/4050550
L 18/348940/4050610
M 18/349040/4050610

Mapped, edited, and published by the Geological Survey

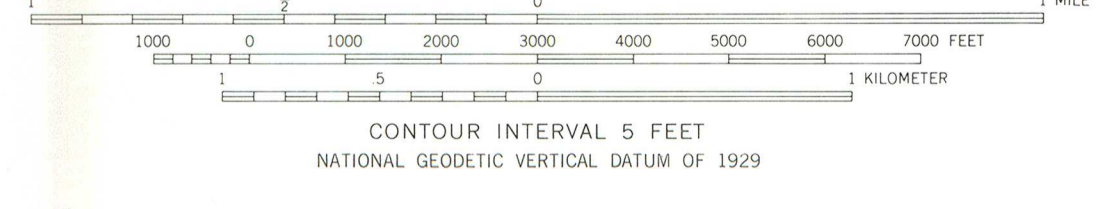
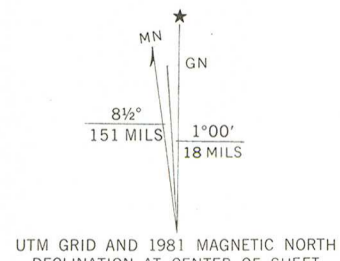
Control by USGS and NOS/NOAA

Topography by photogrammetric methods from aerial photographs taken 1964. Field checked 1967

Polyconic projection. 10,000-foot grids based on Virginia coordinate system, south zone, and North Carolina coordinate system. 1000-meter Universal Transverse Mercator grid ticks, zone 18, shown in blue 1927 North American Datum. To place on the predicted North American Datum 1983 move the projection lines 11 meters south and 29 meters west as shown by dashed corner ticks

Fine red dashed lines indicate selected fence and field lines where generally visible on aerial photographs. This information is unchecked

Revisions shown in purple compiled in cooperation with Commonwealth of Virginia agencies from aerial photographs taken 1978 and other sources. This information not field checked. Map edited 1981



ROAD CLASSIFICATION

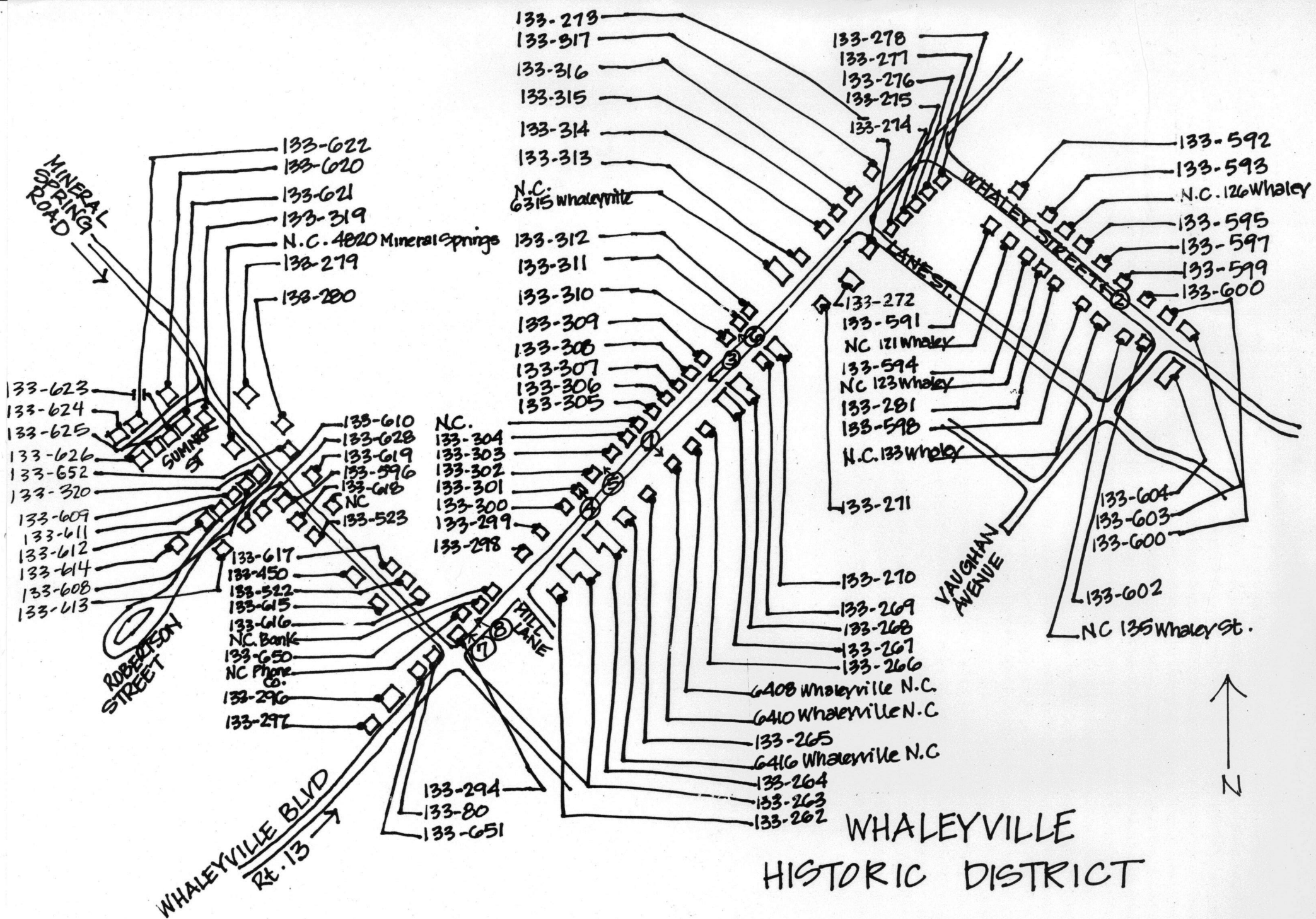
Primary highway, all weather, hard surface	Light duty road, all weather, improved surface
Secondary highway, all weather, hard surface	Unimproved road, fair or dry weather

U.S. Route
Slate Route

THIS MAP COMPLIES WITH NATIONAL MAP ACCURACY STANDARDS
FOR SALE BY U.S. GEOLOGICAL SURVEY, RESTON, VIRGINIA 22092
AND VIRGINIA DIVISION OF MINERAL RESOURCES, CHARLOTTESVILLE, VIRGINIA 22903
A FOLDER DESCRIBING TOPOGRAPHIC MAPS AND SYMBOLS IS AVAILABLE ON REQUEST

WHALEYVILLE, VA. - N. C.
SW/4 SUFFOLK 15' QUADRANGLE
N3630-W7637.5/7.5

1967
PHOTOREVISED 1981
DMA 5657 II SW-SERIES V834



NOTE:
CIRCLED NUMBERS INDICATE
VIEWS OF PHOTOGRAPHS

WHALEYVILLE HISTORIC DISTRICT

City of Suffolk, Virginia
SCALE: 1" = 400'



COMMONWEALTH of VIRGINIA

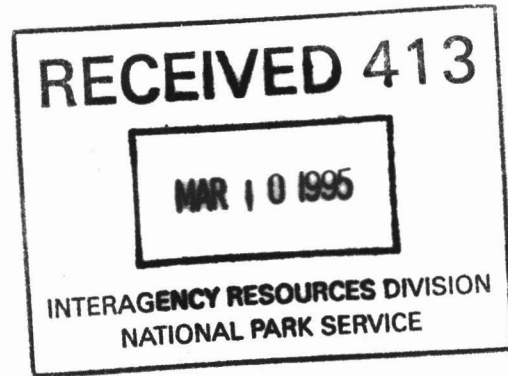
H. Alexander Wise, Jr., Director

Department of Historic Resources

221 Governor Street
Richmond, Virginia 23219

March 3, 1995

Ms. Carol Shull
National Register
National Park Service
800 North Capitol Street
Washington, DC 20001



RE: Whaleyville Historic District, City of Suffolk, Virginia

Dear Ms. Shull:

The enclosed nomination, Whaleyville Historic District, City of Suffolk, Virginia, is submitted for inclusion on the National Register of Historic Places. This nomination has been considered by the State Review Board and there have been no owner objections received.

Should you have any questions, please do not hesitate to contact me.

Sincerely,

A handwritten signature in cursive script that reads "James Christian Hill".

James Christian Hill
National Register Coordinator

Enclosure