

United States Department of the Interior National Park Service

National Register of Historic Places Registration Form



This form is for use in nominating or requesting determinations of eligibility for individual properties or districts. See instructions in Guidelines for Completing National Register Forms (National Register Bulletin 16). Complete each item by marking "x" in the appropriate box or by entering the requested information. If an item does not apply to the property being documented, enter "N/A" for "not applicable." For functions, styles, materials, and areas of significance, enter only the categories and subcategories listed in the instructions. For additional space use continuation sheets (Form 10-900a). Type all entries.

1. Name of Property

historic name GALLISON HALL
other names/site number DHR File No. 02-808

2. Location

street & number 24 Farmington Drive
city, town Charlottesville
state Virginia code VA county Albemarle code 003 zip code 22901

3. Classification

Table with 3 columns: Ownership of Property, Category of Property, and Number of Resources within Property. Includes checkboxes for private/public ownership and building/site/structure/object categories.

Name of related multiple property listing: N/A
Number of contributing resources previously listed in the National Register: N/A

4. State/Federal Agency Certification

As the designated authority under the National Historic Preservation Act of 1966, as amended, I hereby certify that this nomination request for determination of eligibility meets the documentation standards for registering properties in the National Register of Historic Places and meets the procedural and professional requirements set forth in 36 CFR Part 60. In my opinion, the property meets does not meet the National Register criteria. See continuation sheet.
Signature of certifying official: [Signature]
Date: Nov 9 1990
Director, Virginia Department of Historic Resources

In my opinion, the property meets does not meet the National Register criteria. See continuation sheet.
Signature of commenting or other official:
Date:
State or Federal agency and bureau:

5. National Park Service Certification

I, hereby, certify that this property is:
[X] entered in the National Register.
[] See continuation sheet.
[] determined eligible for the National Register. See continuation sheet.
[] determined not eligible for the National Register.
[] removed from the National Register.
[] other, (explain):
Signature of the Keeper: [Signature]
Date of Action: 12/28/90

6. Function or Use

Historic Functions (enter categories from instructions)

DOMESTIC: Single dwellingLANDSCAPE: Garden

Current Functions (enter categories from instructions)

DOMESTIC: Single dwellingLANDSCAPE: Garden

7. Description

Architectural Classification

(enter categories from instructions)

Georgian Revival

Materials (enter categories from instructions)

foundation Concretewalls Brick

roof Slateother

Describe present and historic physical appearance.

SUMMARY ARCHITECTURAL DESCRIPTION:

Gallison Hall is situated in Farmington, approximately three miles west of Charlottesville. The residence stands amidst forty-four acres of expansive lawns and woods and is reached by a long circular drive from the south. The residence, designed by the architect Stanhope Johnson in the Georgian Revival style, was built between 1931 and 1933 and is in excellent condition. It consists of a two-and-one-half-story, five-bay brick center section with a steeply pitched hipped roof flanked by one-and-one-half-story, three-bay, gable-roofed wings placed perpendicular to the main section and connected to it by one-and-one-half story hyphens. The house is further extended at either end by a brick arcade connected to a one-and-one-half, five-bay, gable-roofed garage at the east end and an identical arcade connected to a brick pergola with conical roof on the west. The interior features a center-hall plan with the living rooms on the first floor connected by a sweeping staircase to the bedrooms on the second floor. The interior is remarkable for the elaborate woodwork and rich architectural details; the design of each room is directly derived from such notable Georgian plantation houses as Stratford Hall, Westover, York Hall, and Shirley.

ARCHITECTURAL DESCRIPTION:

Gallison Hall is situated in Farmington, approximately three miles west of Charlottesville. The residence stands amidst forty-four acres of expansive lawns and woods and is reached by a long circular driveway from the south.

Gallison Hall, designed by the architect Stanhope Johnson in the Georgian Revival style, albeit with some eclectic touches, was built between 1931 and 1933 and is in excellent and unaltered condition. It consists of a two-and-one-half-story, five-bay, brick center section with a steeply pitched hipped roof flanked by one-and-one-half-story, three-bay, gable-roofed wings placed perpendicular to the center section and connected to the center section by one-and-one-half-story hyphens. The house is laid in Flemish bond with glazed headers with a molded water table on all four facades. Rubbed jack arches are above both first- and second-story windows.

The house is further extended at either end by a seven-bay brick arcade connected to a one-and-one-half-story two-bay gable-roofed garage on the east and an identical arcade connected to an octagonal brick gazebo on the west.

Two two-story polygonal window bays, articulated by pilasters and paneling, flank the chimney on the west façade of the west wing. The north ends of the perpendicular wings also terminate

United States Department of the Interior
National Park Service

National Register of Historic Places Continuation Sheet

Section number 7 Page 1

in polygonal bays; that on the west wing is open and arcaded and the east is enclosed with French doors topped by semi-circular fanlights.

A modillioned cornice above wall-of-Troy molding encircles the entire house. One of the many refinements seen at Gallison Hall is the use of graduated slate shingles; these taper in size as they reach the ridge line, giving a further illusion of height. Also notable are the clustered chimneys, patterned after those at Bacon's Castle, which are at the gable ends of the center section and the wings.

Six-over-nine sash windows with paneled shutters are used on the first story and six-over-six windows with louvered shutters light the second story. Nine-over-twelve windows are used on the first story of the north facade. There is a large twelve-over-twelve window above the center entrance on the north facade. Hipped roof dormers with six-over-six sash light the attic story.

A set of marble steps leads to the main entrance on the south facade, the design of which is taken directly from that of the river-front entrance of Westover plantation. The entrance features a double-door with a rectangular transom with muntins, suggesting a fanlight above flanked by fluted Corinthian pilasters. A modillioned swans-neck pediment with rosette ends above a cushioned frieze and a pineapple finial complete this elaborate entrance. The entrance on the north facade is less ornate and features Corinthian pilasters, a rectangular transom and a modillioned cornice above a cushioned frieze.

The floor plan of the interior features a wide center stair hall flanked by a dining room, kitchen and octagonal sitting room on the east, and a library, drawing room, and small lounge on the west. Four bedrooms, two dressing rooms, a sitting room and study make up the second floor, while the attic floor contains a large room used for social events.

The interior is exceptional for the wealth of architectural details and elaborate woodwork. Most of it is hand carved and all of it is of the highest calibre. In fact, the quality of the workmanship evident in the floors, plasterwork, stairs, paneling, and architectural details is equalled at only a few other houses in the state. The design of many of these details was taken directly from Georgian sources in Virginia and elsewhere and the architect and owners selected such famous sources as Stratford Hall, Westover, Shirley, York Hall and Gadsby's Tavern in Alexandria.

The center stair hall features a floor of black and white marble squares and fully paneled walls, both features derived from York Hall. A modillioned cornice above a row of leaf-and-rosette molding encircles the entire room. The entrances to the adjoining rooms are framed by reeded architrave moulding with crosettes below a cushioned frieze of bound acanthus leaves. Above the doorway is a dentiled and modillioned swans neck pediment with rosette scrolls and a pineapple finial in bas relief. The design of these doors was taken from Shirley plantation.

United States Department of the Interior
National Park Service

National Register of Historic Places Continuation Sheet

Section number 7 Page 2

The stair rises in two stages and features a molded handrail and corkscrew newel post with square cap. There are three balusters per tread with each made up of three corkscrew sections going in opposite directions. The design of this stair was taken from that at Gadsby's Tavern in Alexandria.

The library, to the left of the stair hall, is a copy of that at Stratford Hall and is the only one in which the wood, in this case pine, walnut and cherry, was left unpainted. Full length bookshelves with fluted Corinthian pilasters on either side line the east wall and frame the fireplace on the west as well. The marble hearth and opening are framed by egg-and-dart molding and **crosssetted** corners below a mantel shelf with dentilled entablature, scrolled brackets and a paneled frieze. There is a plain paneled overmantel. A full classic al entablature encircles the room.

A hall leads from the library to the drawing room on the west, the most ornate of the rooms at Gallison Hall. No one room or house was used as a prototype for the design and architectural detailing of this room. Instead, its features were derived from several sources, including Gunston Hall, Woodlands (in Philadelphia), the designs of William Buckland in Annapolis and the designs of Inigo Jones. The room is entered through an arched door with a foliated bracket keystone and shell-design molding flanked by fluted Ionic pilasters on raised bases. A full entablature with a frieze of carved flowers and fruit encircles the room. An entrance on the north features egg-and-dart molding with **crossettes**, a foliated cushion frieze and broken pediment. The polygonal bays with French windows flank the center fireplace.

The fireplace is the most prominent architectural feature of the room and is executed in the English manner of Inigo Jones and William Kent. Tapered pilasters with carved fruit garlands, foliated brackets and rosette corner blocks flank the hearth opening. The frieze features garland swags and a center panel with a shell design. The overmantel is made up of more scrollwork, a foliated **cushion** frieze with garlanded center panel below a dentilled broken pediment with a Prince of Wales feather design for the finial.

The dining room, to the right of the center hall, is a copy of the Baltimore Room at the Metropolitan Museum and is in the Federal style. Two semi-circular alcoves fitted with shelves and ornamented by an inverted shell design at the top flank the fireplace. The fireplace features paired colonnettes, a frieze of alternating rectangles and an ellipse and rope molding below the mantel shelf. On the opposite wall is a shallow elliptical arched alcove with reeded molding and fluted colonnettes. The reeded molding is repeated in the chairrail and ceiling cornice and is also used in the fireplace.

United States Department of the Interior
National Park Service

National Register of Historic Places Continuation Sheet

Section number 7 Page 3

The bedrooms on the second floor are arranged around a center hall. The architectural details are much simpler than on the first floor although the fireplace mantels are all well-crafted examples of the Federal style. A sitting room features a fireplace with fluted pilasters and reeded frieze. It is flanked by an arched door and arched cupboard ornamented with a shell design and fluted keystone. One of the bedrooms features woodwork in a "country" variant of the Federal style with exaggerated Greek architraves around the doors and a mantel featuring a frieze of concentric squares and oval sunbursts.

A set of Chippendale stairs derived from those at Brandon plantation lead to the so-called Gay Nineties room in the attic. This room, used for dances and parties by the original owners, contains Victorian light fixtures, a bar, and several alcoves with banquettes and was furnished in a turn-of-the-century manner.

The landscape architect Charles F. Gillette had collaborated with Stanhope Johnson several times previously, including Belvoir (1928) in Charlottesville. Gillette's landscape designs at Gallison Hall were simple and clearly subordinated to the elaborate architecture. A row of deciduous trees stands on either side of the long drive which terminates in the imposing Georgian-style gateposts derived from those at Westover. A small garden of boxwoods, perennials, and spring flowering bulbs, divided by brick walks is adjacent to the brick pergola on the west. To the southwest of the house is a compact rose garden and to the northwest, at the foot of a flight of brick stairs is a large ornamental parterre made up of low-growing evergreens. The parterre had nearly disappeared from neglect until it was rediscovered by the present owners who are currently restoring it. To the east of the house are several fenced pastures; in fact, Gallison Hall is the only property in the Farmington subdivision in which farm animals are permitted and the Galbans kept several ponies and horses there during their ownership. The grounds and gardens are well-maintained and contribute to the formality of the architecture.

8. Statement of Significance

Certifying official has considered the significance of this property in relation to other properties:

nationally statewide locally

Applicable National Register Criteria A B C D

Criteria Considerations (Exceptions) A B C D E F G

Areas of Significance (enter categories from instructions)

Period of Significance

Significant Dates

ARCHITECTURE

1931-1933

1931-1933

Cultural Affiliation

NA

Significant Person

Architect/Builder

Stanhope Johnson
Charles F. Gillette (gardens)

State significance of property, and justify criteria, criteria considerations, and areas and periods of significance noted above.

SUMMARY STATEMENT OF SIGNIFICANCE:

Gallison Hall is an outstanding example of the Georgian Revival style and is one of the largest residences built in this style in Virginia. Designed by architect Stanhope Johnson between 1931 and 1933, Gallison Hall also reflects the eclectic tastes of its first owners, Mr. and Mrs. Julio Suarez-Galban, who wished to include the best features of several famous colonial Virginia plantation houses, including Westover, Stratford Hall, and even Bacon's Castle. Set among its English gardens designed by Charles F. Gillette, Gallison Hall epitomizes the Georgian Revival country house ideal. In addition, the attention to traditional crafted moldings and brickwork reflected the then-current scholarly interest in the restoration of colonial Williamsburg. Gallison Hall represents Johnson's work at its most mature stage and was considered by the architect to be his finest commission from this period.

HISTORY AND SUPPORT:

Gallison Hall stands on land patented to Michael Holland in 1744.¹ The eighteenth-century plantation house on this property, later known as Farmington, was altered along designs supplied by Thomas Jefferson in 1802. Its last private owners were the Wood family who sold in 1927 to form the nucleus² of the Farmington Country Club development. The farm was subdivided into building lots.² In 1929 a forty-four-acre parcel was purchased by Mr. and Mrs. Julio Suarez-Galban, both of whom had attended the University of Virginia and decided to remain in Charlottesville.³

In 1930 the Galbans commissioned the architect Stanhope Johnson, of Lynchburg, Virginia, to design their residence. He, along with the landscape architect Charles Gillette, worked closely with the Galbans throughout the initial design process. Work commenced in 1931 and was completed in 1933 at a reputed cost of \$145,000.⁴ The name Gallison Hall was derived from the combination of G(alban) and Allison, Mrs. Galban's mother's maiden name. Johnson's drawings, as well as other project documentation is in the collection of the Jones Memorial Library in Lynchburg.

See continuation sheet

United States Department of the Interior
National Park ServiceNational Register of Historic Places
Continuation SheetSection number 8 Page 1

Stanhope Johnson (1882-1973) was one of Lynchburg's most distinguished twentieth-century architects and a leading exponent of the Georgian Revival style in Virginia. Associated as early as age seventeen with the architect Edward Frye, he assisted in the design of Court Street Methodist Church in Lynchburg in 1902, his earliest known work.⁵ He became part of the firm of McLaughlin, Petit & Johnson and was commissioned soon thereafter to design several residences and public schools. The firm was dissolved in 1917 and Johnson continued on his own or with a succession of junior associates until the 1960s.⁶ At his death in 1973 he was the dean of Lynchburg's architects.

Johnson's range of work was extensive. He and his firm received numerous commissions for hotel and commercial buildings throughout Virginia, Maryland, and North and South Carolina.⁷ In Lynchburg alone he was responsible for the Centenary Methodist Church (1925), Presser Hall at Randolph-Macon Woman's College (1929), Virginia Baptist Hospital (1920-1924), the Woodstock Apartments, the gymnasium at Lynchburg College (1922), the Virginia Hotel, and numerous residences in the wealthier sections of the city.⁸ One of his most important commissions was for the design of the Allied Arts Building in Lynchburg, a seventeen-story skyscraper in the Art Moderne style and until recently Lynchburg's tallest building. In Charlottesville he was responsible for the Monticello Hotel, opened in 1926 with much civic fanfare, and Belvoir (1928), a Georgian Revival residence that resembles Gunston Hall.⁹

Although his facility with a number of different styles was well demonstrated, by the mid-1920s Johnson had settled on Georgian as the style of choice for residential design. His work is often labeled "James River Georgian", as distinct from the early twentieth century Colonial Revival, for its liberal borrowing of architectural details from the colonial plantation houses along the James River. In this, he was joined by other well-known architects practicing in Virginia such as William L. Bottomley, Percy Griffin, Eugene Bradbury, and Marshall S. Wells. These architects drew upon the burgeoning academic and popular interest in the Georgian architectural heritage of Virginia. Part of this was due no doubt to the rediscovery and restoration of Williamsburg going on at the same time. But Johnson, like the best of the Georgian Revival architects, was no mere copyist. He combined a mastery of eighteenth-century detail and style with a recognition of the demands of his clients for twentieth-century comfort and convenience. The result at Gallison Hall was an elegant blending of several different periods of Georgian architecture along with many up-to-date features.

With the Galbans, Johnson was faced with clients of somewhat eclectic tastes and a more than amateur's knowledge of Georgian architecture. For many years they had toured the plantation houses along the James River and in the Northern Neck and had noted and recorded

United States Department of the Interior
National Park ServiceNational Register of Historic Places
Continuation SheetSection number 8 Page 2

those architectural features they particularly admired. Their desire was to incorporate as many of those features as possible in their new residence. Thus Johnson was given the task of incorporating in an harmonious manner architectural elements taken from Westover, Shirley, and Stratford Hall plantations, among several others. The result was a surprising successful and integrated design, with the disparate architectural features (even the Jacobean chimneys taken from Bacon's Castle) contributing rather than distracting from the total composition. No doubt part of this cohesiveness is due to the uniformly high quality of the details of brickwork and carving evident on both the exterior and the interior. In its scale and quality of execution, Gallison Hall is rivalled by few other Georgian Revival houses in Virginia.

After more than a half century of ownership by the Galban family, Gallison Hall was bought by the present owners, Mr. and Mrs. Dimitri Nicholas in 1983. The changes effected by the Nicholases have been few: central air-conditioning was added, the kitchen modernized, and the interior was repainted. A small ornamental fountain was added at the end of the circular drive, and the parterre to the northwest of the house is being carefully restored. The house is often open for Garden Week and holiday house tours.

References:

- 1- William T. Stevens, Virginia House Tour, (Charlottesville: Stevenspost Publications), p.
- 2- Ibid., p. 170.
- 3- Evelyn Galban, "Gallison Hall", (Charlottesville: Albemarle County Historical Society).
- 4- Ibid., p.2.
- 5- S. Allen Chambers, Lynchburg-An Architectural History, (Charlottesville:University of Virginia Press), p. 232.
- 6- Ibid., p. 202.
- 7- Stanhope Johnson and R.O. Braman (Booklet/Portfolio depicting architectural commission in Lynchburg and elsewhere), pages 1-45.
- 8- Chambers, op.cit., p. 233.
- 9- Johnson and Braman, pages 2, 17, 23.

**United States Department of the Interior
National Park Service**

**National Register of Historic Places
Continuation Sheet**

Section number 10 Page 1

UTM REFERENCES

- A 17/716440/4216340
- B 17/716460/4216220
- C 17/716400/4216220
- D 17/716280/4216160
- E 17/716360/4216060
- F 17/716070/4215940
- G 17/716010/4216090
- H 17/715890/4216280
- I 17/715960/4216420
- J 17/716190/4216400
- K 17/716190/4216360

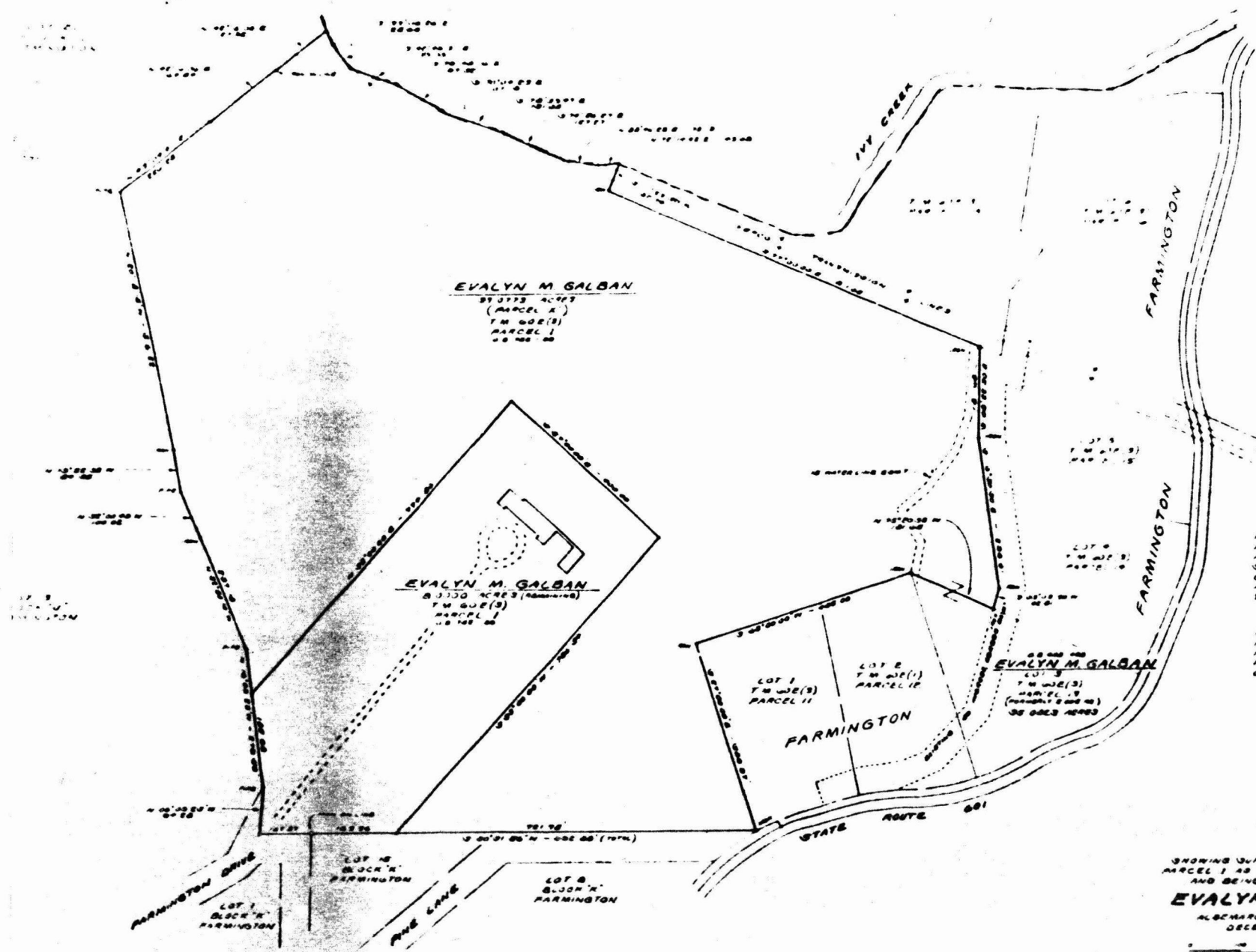
United States Department of the Interior
National Park Service

**National Register of Historic Places
Continuation Sheet**

Section number _____ Page _____

PHOTOGRAPH IDENTIFICATION

1. Gallison Hall
Charlottesville, Albemarle County, Virginia
Photographed by Geoffrey B. Henry, 1989
Negative on file at the VA State Library, Richmond, VA
View of south facade
2. Detail, entrance on south facade
3. View looking to the southeast
4. View of north facade
5. View of pergola on west facade of west wing
6. View of drawing room, first floor
7. View of library mantel and west wall
8. Detail of keystone arch in hall, second floor
9. View of second floor hall looking west
10. Detail of mantel, second floor bedroom
11. Detail of stair banister, second floor landing
12. Detail of entrance hall looking south
13. Detail of library door pediment



EVALYN M. GALBAN
 37 0773 ACRES
 (PARCEL A)
 T.M. 602(3)
 PARCEL I
 30 000 00

EVALYN M. GALBAN
 8 3100 ACRES (APPROXIMATE)
 T.M. 602(3)
 PARCEL I
 30 000 00

EVALYN M. GALBAN
 30 000 00
 T.M. 602(3)
 PARCEL I
 30 000 00

NOTE
 PARCEL "A", CONTAINING 30 0773 ACRES
 AND BEING A PORTION OF PARCEL 1 OF
 SHEET 602(3) OF THE ALBEMARLE
 COUNTY TAX MAPS, TO BE ADDED TO
 AND BECOME A PART OF PARCEL 13 OF
 T.M. 602(3), BEING LOT 3, FARMINGTON

NOTE
 PROPERTY CURRENTLY OWNED BY
 PARCEL "A" TO RETAIN A DEVELOPMENT
 RIGHTS, AND THE REMAINDER OF PARCEL
 ONE TO HAVE A DEVELOPMENT RIGHT



PLAT
 SHOWING SPLIT AND DIVISION OF
 PARCEL 1 AS SHOWN ON THE MAP 602(3)
 AND BEING THE PROPERTY OF
EVALYN M. GALBAN
 ALBEMARLE COUNTY, VIRGINIA
 DECEMBER 5, 1988

GRAPHIC SCALE IN FEET
 0 100 200 300

ALBREY HUFFMAN AND ASSOCIATES, LTD.
 CIVIL ENGINEERING - LAND SURVEYING - LAND PLANNING
 CHARLOTTESVILLE, VIRGINIA

12-6-88
 2:00 PM
 POK

UNITED STATES DEPARTMENT OF THE INTERIOR
NATIONAL PARK SERVICE

NATIONAL REGISTER OF HISTORIC PLACES
EVALUATION/RETURN SHEET

REQUESTED ACTION: NOMINATION

PROPERTY NAME: Gallison Hall

MULTIPLE NAME:

STATE & COUNTY: VIRGINIA, Albemarle

DATE RECEIVED: 11/30/90 DATE OF PENDING LIST: 12/12/90
DATE OF 16TH DAY: 12/28/90 DATE OF 45TH DAY: 1/14/91
DATE OF WEEKLY LIST:

REFERENCE NUMBER: 90002013

NOMINATOR: STATE

REASONS FOR REVIEW:

APPEAL: N DATA PROBLEM: N LANDSCAPE: N LESS THAN 50 YEARS: N
OTHER: N PDIL: N PERIOD: N PROGRAM UNAPPROVED: N
REQUEST: N SAMPLE: N SLR DRAFT: N NATIONAL: N

COMMENT WAIVER: N

ACCEPT RETURN REJECT 12/28/90 DATE

**Entered in the
National Register**

ABSTRACT/SUMMARY COMMENTS:

RECOM./CRITERIA _____
REVIEWER _____
DISCIPLINE _____
DATE _____

DOCUMENTATION see attached comments Y/N see attached SLR Y/N

CLASSIFICATION

count resource type

STATE/FEDERAL AGENCY CERTIFICATION

FUNCTION

historic current

DESCRIPTION

architectural classification
 materials
 descriptive text

SIGNIFICANCE

Period Areas of Significance--Check and justify below

Specific dates Builder/Architect
Statement of Significance (in one paragraph)

summary paragraph
 completeness
 clarity
 applicable criteria
 justification of areas checked
 relating significance to the resource
 context
 relationship of integrity to significance
 justification of exception
 other

BIBLIOGRAPHY

GEOGRAPHICAL DATA

acreage verbal boundary description
 UTM's boundary justification

ACCOMPANYING DOCUMENTATION/PRESENTATION

sketch maps USGS maps photographs presentation

OTHER COMMENTS

Questions concerning this nomination may be directed to

_____ Phone _____

Signed _____

Date _____



1

GALLISON HALL

ALBEMARLE COUNTY

GEOFFREY HENRY 1984

VIEW OF S. FACADE

NEG FILED DAR LIBRARY RICHMOND

2/26



#2

GALLISON + HALL
ALBEMARLE CO, VA

GEOFFREY HENRY

DETAIL: ENTRANCE ON S. FACADE

NEG FILED DHR LIBRARY RICHMOND

10/26



GALLISON HALL
ALBEMARLE CO.

#3

GEOFFREY HENRY 1983

VIEW LOOKING SE

NEG. FILED DHR LIBRARY RICHMOND

6/26



GALLISON HALL
ALBEMARLE CO. VA

#4

ALBEMARLE CO.

GEOFFREY HENRY

NORTH FACADE

NEG. FILED DHR LIBRARY RICHMOND

4/26



GALLISON HALL
ALBEMARLE CO.

#5

ALBEMARLE CO.

GEOFFREY HENRY

PERGOLA ON W. FACADE, W. WING

NEG FILED DHR LIBRARY RICHMOND

8/26



GALLISON HALL, ALBEMARLE CO., VA #6

GALLISON HALL

ALBEMARLE COUNTY

GEOFFREY HENRY 1489

VIEW OF DRAWING ROOM 1ST FLOOR

NEG. FILED DHR LIBRARY RICHMOND

12/26



GALLISON HALL, ALBEMARLE CO., #7
VA

GALLISON HALL

ALBEMARLE COUNTY

G. HENRY 1984

LIBRARY, MANTEL AND WEST WALL

NEG FILED DHR LIBRARY RICHMOND

14/26



#8

GALLISON HALL, ALBEMARLE CO., VA

G. HENRY 1984

KEYSTONE, ARCH IN 2ND FLOOR HALL

NEG FILED DHR LIBRARY RICHMOND

12/26



#9

GALLISON HALL
ALBEMARLE CO., VA

G. HENRY 1989

VIEW OF HALL ON SECOND FLOOR, LOOKING W.

NEG FILED DMR LIBRARY RICHMOND

18/26



GALLISON HALL, ALBEMARLE CO., VA # 10

GALLISON HALL

ALBEMARLE CO.

G. HENRY 1989

DETAIL OF MANTEL IN 2ND FLOOR BEDROOM

NEG FILED DAR LIBRARY RICHMOND

20/26



GALLISON HALL, ALBEMARLE CO., VA # 11

GALLISON HALL

ALBEMARLE COUNTY

G. HENRY 1984

DETAIL OF STAIR BANISTER 2ND FLOOR
LANDING

NEG FILED DHR LIBRARY RICHMOND

22/26



GALLISON HALL, ALBEMARLE CO, VA. # 12

GALLISON HALL

ALBEMARLE CO.

G. HENRY 1990

DETAIL OF ENTRANCE HALL LOOKING SOUTH

NEG FILED DHR LIBRARY RICHMOND

24/26



GALLISON HALL, ALBEMARLE CO., VA

GALLISON HALL

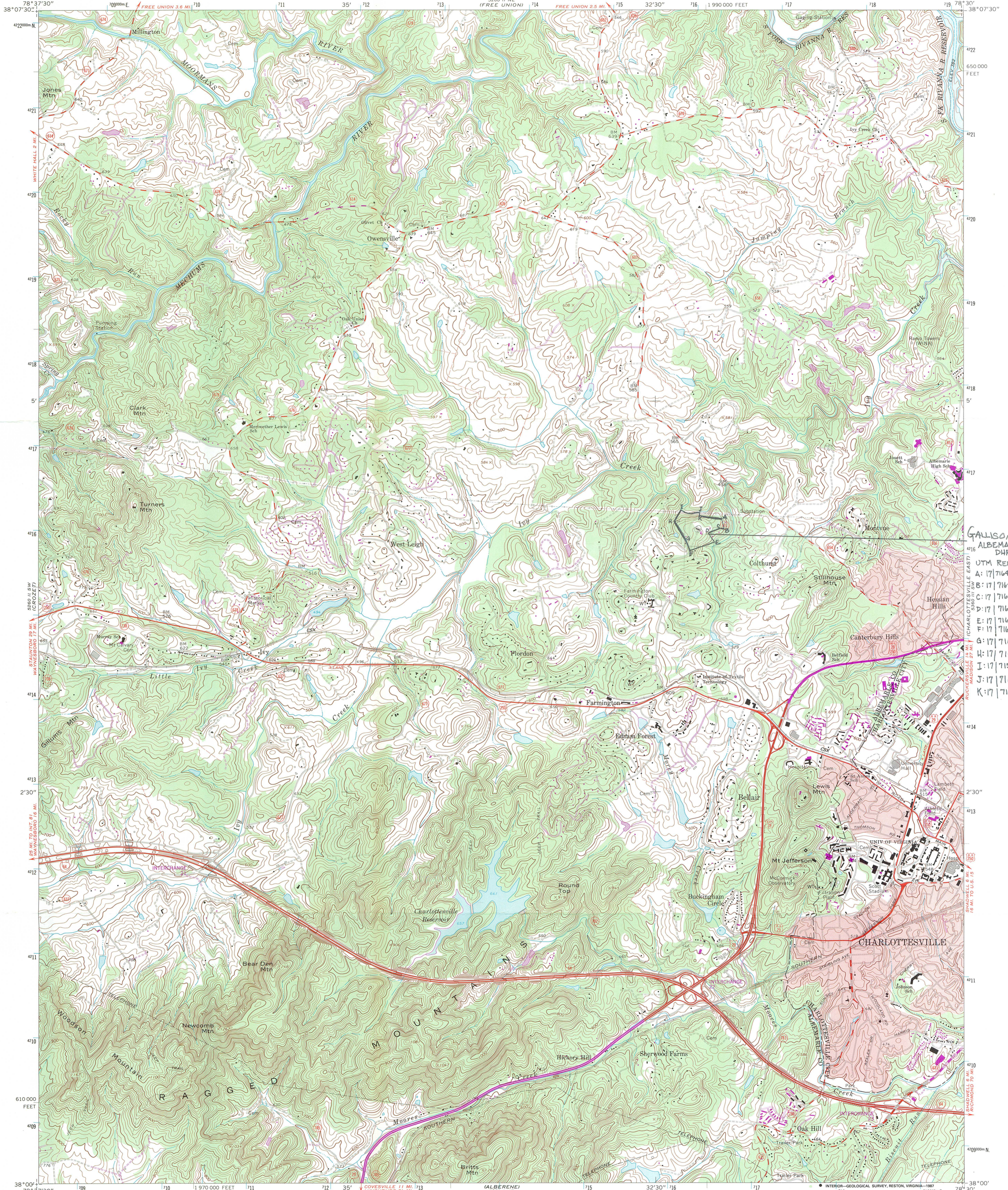
ALBEMARLE COUNTY

GEOFFREY HENRY 1989

DETAIL OF PEDIMENT, DOOR TO LIBRARY
NEG FILED IN LIBRARY RICHMOND

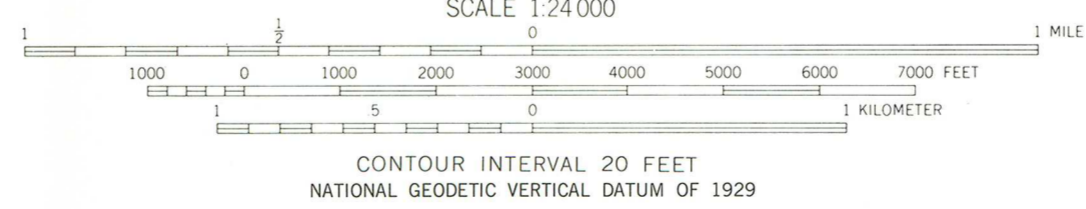
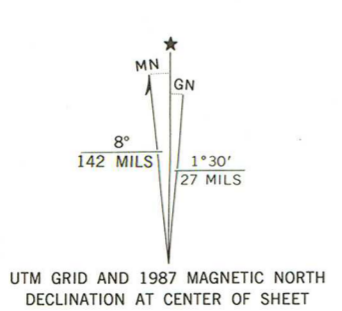
#13

26/24



GALLISON HALL
ALBEMARLE COUNTY
DHR 02-808
UTM REFERENCES:
A: 17 716440 | 4216340
B: 17 716460 | 4216220
C: 17 716400 | 4216220
D: 17 716280 | 4216160
E: 17 716360 | 4216060
F: 17 716070 | 4215940
G: 17 716010 | 4216090
H: 17 715870 | 4216280
I: 17 715960 | 4216420
J: 17 716190 | 4216400
K: 17 716190 | 4216360

Mapped, edited, and published by the Geological Survey
Control by USGS and USC&GS
Topography by photogrammetric methods from aerial photographs taken 1963. Field checked 1964. Revised from aerial photographs taken 1972. Field checked 1973
Polyconic projection. 1927 North American datum
10,000-foot grid based on Virginia coordinate system, south zone
1000-meter Universal Transverse Mercator grid ticks, zone 17, shown in blue
To place on the predicted North American Datum 1983
move the projection lines 9 meters south and
23 meters west as shown by dashed corner ticks
Fine red dashed lines indicate selected fence and field lines where
generally visible on aerial photographs. This information is unchecked
Red tint indicates areas in which only landmark buildings are shown



SCALE 1:24,000
CONTOUR INTERVAL 20 FEET
NATIONAL GEODETIC VERTICAL DATUM OF 1929

THIS MAP COMPLIES WITH NATIONAL MAP ACCURACY STANDARDS
FOR SALE BY U. S. GEOLOGICAL SURVEY, DENVER, COLORADO 80225 OR RESTON, VIRGINIA 22092,
AND VIRGINIA DIVISION OF MINERAL RESOURCES, CHARLOTTESVILLE, VIRGINIA 22903
A FOLDER DESCRIBING TOPOGRAPHIC MAPS AND SYMBOLS IS AVAILABLE ON REQUEST



ROAD CLASSIFICATION
Primary highway, hard surface
Secondary highway, hard surface
Light-duty road, hard or improved surface
Unimproved road
Interstate Route
U. S. Route
State Route

CHARLOTTESVILLE WEST, VA.
38078-A5-TF-024

Revisions shown in purple and woodland compiled in cooperation with Commonwealth of Virginia agencies from aerial photographs taken 1984 and other sources. This information not field checked
Map edited 1987

1973
PHOTOREVISED 1987
DMA 5260 11 SE - SERIES V534



RECEIVED
NOV 30 1990

NATIONAL
REGISTER

COMMONWEALTH of VIRGINIA

Hugh C. Miller, Director

Department of Historic Resources

221 Governor Street
Richmond, Virginia 23219
Telephone (804) 786-3143
TDD: 804-786-4276

9 November 1990

Ms. Carol Shull
National Register
National Park Service
1100 L Street, N.W.
Washington, DC 20240

RE: Gallison Hall, Albemarle County

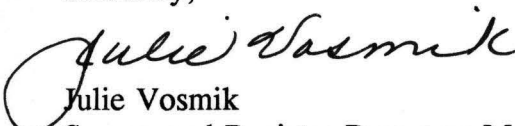
Dear Ms. Shull:

The enclosed nomination, Gallison Hall, Albemarle County, Virginia, is submitted for inclusion on the National Register of Historic Places.

This nomination has been considered by the State Review Board and there have been no owner objections received.

Should you have any questions, please do not hesitate to contact me.

Sincerely,


Julie Vosmik
Survey and Register Programs Manager

Enclosure