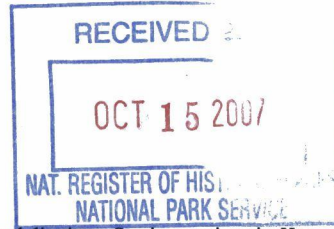


United States Department of the Interior
National Park Service



NATIONAL REGISTER OF HISTORIC PLACES
REGISTRATION FORM

This form is for use in nominating or requesting determinations for individual properties and districts. See instructions in *How to Complete the National Register of Historic Places Registration Form* (National Register Bulletin 16A). Complete each item by marking "x" in the appropriate box or by entering the information requested. If any item does not apply to the property being documented, enter "N/A" for "not applicable." For functions, architectural classification, materials, and areas of significance, enter only categories and subcategories from the instructions. Place additional entries and narrative items on continuation sheets (NPS Form 10-900a). Use a typewriter, word processor, or computer, to complete all items.

1. Name of Property

historic name: Scott House
other names/site number: Frederic W. Scott House; Scott-Bocock House VDHR# 127-0228-0001

2. Location

street & number: 909 West Franklin Street not for publication N/A
city or town: Richmond vicinity N/A
state: Virginia code: VA county: Richmond City code: 760 zip code: 23284

3. State/Federal Agency Certification

As the designated authority under the National Historic Preservation Act, as amended, I hereby certify that this X nomination request for determination of eligibility meets the documentation standards for registering properties in the National Register of Historic Places and meets the procedural and professional requirements set forth in 36 CFR Part 60. In my opinion, the property X meets does not meet the National Register Criteria. I recommend that this property be considered significant nationally X statewide locally. (See continuation sheet for additional comments.)

[Signature]
Signature of certifying official

October 12, 2007
Date

Virginia Department of Historic Resources

State or Federal Agency or Tribal government

In my opinion, the property meets does not meet the National Register criteria. (See continuation sheet for additional comments.)

Signature of commenting official/Title

Date

State or Federal agency and bureau

4. National Park Service Certification

I, hereby certify that this property is:

- entered in the National Register
 See continuation sheet.
- determined eligible for the National Register
 See continuation sheet.
- determined not eligible for the National Register
- removed from the National Register
- other (explain):

Signature of the Keeper

Patrick Adams

Date of Action

11/26/2007

United States Department of the Interior
National Park Service

Scott House
City of Richmond, Virginia

5. Classification

Ownership of Property (Check as many boxes as apply)

- private
- public-local
- public-State
- public-Federal

Category of Property (Check only one box)

- building(s)
- district
- site
- structure
- object

Number of Resources within Property

Contributing	Noncontributing	
<u> 1 </u>	<u> 0 </u>	buildings
<u> 0 </u>	<u> 0 </u>	sites
<u> 0 </u>	<u> 0 </u>	structures
<u> 0 </u>	<u> 0 </u>	objects
<u> 1 </u>	<u> 0 </u>	Total (Carriage House, not listed previously in inventory of district)

Number of contributing resources previously listed in the National Register 1

(The main building is a contributing resource in the West Franklin Street Historic District, VDHR# 127-0228, NRHP listed 09/14/1972.)

Name of related multiple property listing (Enter "N/A" if property is not part of a multiple property listing.) N/A

6. Function or Use

Historic Functions (Enter categories from instructions)

Cat: Domestic Sub: Single Dwelling

Current Functions (Enter categories from instructions)

Cat: Education Sub: Education-Related (university offices)

7. Description

Architectural Classification (Enter categories from instructions)

Late 19th and 20th Century Revivals – Beaux Arts

Materials (Enter categories from instructions)

Foundation: concrete
Roof: slag
Walls: Stone: Indiana Limestone

Narrative Description (Describe the historic and current condition of the property on one or more continuation sheets.)

United States Department of the Interior
National Park Service

NATIONAL REGISTER OF HISTORIC PLACES
CONTINUATION SHEET

Scott House
City of Richmond, Virginia

Section 7 Page 1

7. SUMMARY DESCRIPTION

Situated on one of Richmond's grandest residential streets, the Scott-Bocock House is a formal Beau-Arts residence of impressive scale and size for the urban context in which it sits. The house's pale classical austerity stands in sharp contrast to its more florid and eclectic revivalist neighbors. Heavy classical elements combine to present the fashionable street with a commanding façade.

The interior of the Scott house is no less impressive than the exterior. Encompassing some 40,950 square feet of finished space distributed across three stories, the interior of Scott house is one of Richmond's most striking.¹ Like Marble House in Rhode Island and other American Renaissance dwellings, the first floor of the Scott House can be understood as an architectural museum, with rooms in many different styles, each style normally selected for its association with the function of the room. In that spirit, the entry hall and drawing room pay tribute to eighteenth-century France, famed for the refinement of its social life; the library cites the Gothic era, a great age of learning; the dining room follows the Adamesque taste of the late eighteenth-century, when Britons developed the modern dining room; and the Renaissance den evokes the studies or *studioli* of fifteenth- and sixteenth-century Italy. This gallery of styles was not cut-and-dried -- there is the breakfast room, decorated with a Pompeian *bacchanale*, and a Renaissance-Chinese Den influenced by the Scotts' acquisition of Chinese furniture.

DETAILED DESCRIPTION

Exterior

The exterior of 909 West Franklin Street takes its theme from Marble House, a Vanderbilt Mansion in Newport, Rhode Island, and ultimately from the Petit Trianon at Versailles. The three-story building is seven bays wide and is faced with a pale Indiana limestone. A central portico of four, giant order Corinthian columns and two Corinthian pilasters dominates the highly formal, symmetrical entrance façade. A balcony with curved balustrade is tucked up under the portico on the second story. The attic story is hidden from the street by a balustrade running along the edge of the roofline, echoing a balustrade surrounding the terrace below. Individual bays are highly articulated with heavy architraves topped by cornices and supporting consoles and windows are one-over-one, double-hung, sash windows. Inset panels with double garlands separate the upper and lower fenestration of each bay, which strengthen the ability to read each bay as in individual decorative element across the façade. The building is topped with a wide cornice, a frieze of swags, dentils and modillions. Heavy quoining is visible at the corners of the façade. Protruding out from either side of the central block is a porte cochere to the west and covered porch and Breakfast Room to the east. At the rear of the house, the service wing features an arcaded kitchen loggia, now enclosed, on the ground floor with a wrought iron verandah on the 3-bay upper story. The house sits on a small lot of land with little landscaping, other than a few trees and bushes. The current landscaping is not original to the property. A picturesque carriage house sits to the rear.

Ground Floor

The principal rooms of the Scott-Bocock House are arranged on the ground floor around a formal entrance hall. The main block of the house is bisected on the ground floor by the hall and grand double-return stair at which it terminates. The library and dining room, to the left of the hall, and the drawing room, on the right, all open onto the entrance hall, creating a suite of formal public rooms. Less public spaces included within principal rooms are the den and conservatory, neither of which opens onto the entrance hall, but which can be accessed through other rooms within the suite of public rooms. Main access to the den is located in the corridor under the main staircase running between the public and

United States Department of the Interior
National Park Service

NATIONAL REGISTER OF HISTORIC PLACES
CONTINUATION SHEET

Scott House
City of Richmond, Virginia

Section 7 Page 2

service areas of the ground floor, while secondary access is available via both communicating doors between den and drawing room and a door to the rear hall. The conservatory is removed from the main block of rooms, accessed via the dining room and pantry and lying along the axis of areas – conservatory, pantry, elevator and rear hall – which create a mixed-use buffer between the family and service areas of the house.

The service wing, located to the rear of the principal rooms, is roughly 50% the size of the main block. Although significantly altered to accommodate its use as a public building, the original service wing included a spacious, well-lit and well-ventilated kitchen, servants' hall and kitchen loggia, which ran across the back of the service area, creating a cool, shaded retreat from the heat of the kitchen. This loggia backed onto a city alley would have allowed for convenient disposal of kitchen waste. Completing the service area to the rear, the carriage house lay across the alley from the service wing of the house. This created a convenient termination point for carriages dropping passengers at the porte-cochere along the west side of the house.

Main Hall

Primary access to the main hall is via a double glass panel door topped by a transom. The glass is protected by decorative ironwork on the exterior. Flanking the entryway are the most highly-ornamented elements of the main hall's rather ornate decorative scheme - paired pilasters decorated with garlands and topped by egg-and-dart molding. The pilasters support oversized consoles decorated with acanthus leaves which, in turn, support the heavy Corinthian entablature of cornice, decorative modillions, egg-and-dart molding, dentils, a wide bas-relief frieze and architrave. The composition uses a classical architectural vocabulary, but is grouped in a highly decorative and unorthodox way typical of the Beaux-Arts style of architecture. The crosssetted architrave at the entrance of the dining room is similarly embellished, but is flanked by single rather than paired pilasters and separated from the entablature by a pulvinated frieze. The motif is poorly resolved here, however, as the right pilaster is cut off by a larger pilaster/console group which supports a ceiling beam. As befits the minimal space of the corridor between the main hall and rear hall, the architrave of the den door is unornamented. The walls feature a paneled wainscot below a dado and a series of rectangular panels formed by a cross-banded, reeded cushion frieze with a bead-and-leaf inset panel. The floor in the main hall, as throughout the principal rooms, is parquetry laid in a herringbone pattern.

Library

A pair of four-panel oak doors carved with a lancet design leads into the gothic revival library. The walls and mantel are lined with a matching carved oak wainscot of similar lancet design separated from plaster walls by an intricate vinette wainscot cap. The slender oak architraves of windows and doors are formed of wide ogival arches decorated with gothic and organic ornamentation topped by a finial. The room is capped by an ornamental plaster ceiling in the gothic revival style of interlaced strapwork created by stylized quatrefoils, formed by ogee rather than rounded arches, and with a central starburst design. Below this runs a vinette cornice and a pendant frieze created by a running motif of half quatre- or trefoils executed in plaster.

Dining Room

The dining room is executed in a Georgian- or Federal Revival style – the swan's neck pediments with central urn decoration above the doors being reminiscent of an earlier American classicism, whilst the decorative plaster ceiling references the work of Robert Adam and American Federal architecture. Architraves and wainscot are executed in mahogany and painted in imitation marquetry. The wainscot is painted as a marquetry imitation of a rectangular inset panel and is capped by a wide but simple dado at

United States Department of the Interior
National Park ServiceNATIONAL REGISTER OF HISTORIC PLACES
CONTINUATION SHEETScott House
City of Richmond, VirginiaSection 7 Page 3

chair-back height. Doors leading to interior spaces - the main hall, library, conservatory and pantry - are topped by swan's-neck pediments with central urns and feature architraves with garlanded faux marquetry. Doors leading to external spaces - the terrace and east porch - are similarly ornamented but are topped by transom lights rather than pediments. All doors are French doors (with the exception of the pantry door which is made to look like a double door, but is in fact only single) with full-length lights covered with circular tracery arranged in a variety of patterns. The plaster ceiling is in the style of Robert Adam with a central octagonal medallion within a large ovoid field surrounded by tondi and an acanthus leaf and scroll motif within a rectangular frame. On the south wall sits an elegant neoclassical fireplace. The mantle and hearth are executed in yellow and white marble with a central garlanded urn with smaller urns topping the flanking pilasters, all yellow ground with white decoration.

Conservatory

The conservatory is rather different in both scale and style to the other principal rooms on the ground floor. Its oblique access via the dining room, intimate scale and whimsical decoration make it a more private space than the other rooms within the formal suite. Like the dining room which it abuts, the conservatory references the work of Robert Adam, not merely in decoration, but also in very characteristically Adamesque use of intersecting arcuated elements to create a dynamic elasticity within the space. Here, the barrel-vaulted ceiling intersects apsidal projections on the room's east and south sides, exploding the traditional box shape of the house's other rooms. The conservatory is meant to dazzle and toy with the senses. The unusual spatial arrangement creates a constantly changing surface to engage and delight the eye - an arrangement further accentuated by the application of polychromed organic decoration at the intersections of vault and apse, apse and wall. A figurative Greco-Roman frieze in bas-relief runs along the top of the walls. The frieze, like the aforementioned organic decoration, is polychromed, although it is unlikely that the current colors represent the original decorative scheme. Below the frieze runs a painted garland motif. A series of five leaded casement windows span the width of the apses below the frieze. Each window features a green stained glass foliate garland. At the ceiling's center is an oculus of stained glass created to imitate the expensive alabaster windows used in ancient and mediaeval architecture of the Mediterranean region. The conservatory floor is of a creamy, pale terrazzo, complimenting the imitation alabaster above as well as the numerous carved stone jardinières and radiator cover flanked by stone caryatids. The radiator cover, which in form resembles a fire mantle, is covered by a metal grille of classical design. The heads of the flanking caryatids carry Ionic capitals which, in turn, carry the weight of a marble mantle shelf edged with egg-and-dart molding.

Drawing Room

The proportions of the drawing room are the most attenuated of the principal rooms, making the room seem more elegant, lofty and feminine. This room is the most outwardly French in style, a feeling created by the (seemingly) roundhead windows and the long, elegant lines created by the elongated architraves. Decoration is delicate and on a small scale which, combined with the slightly concave ceiling makes for a very refined decorative scheme. Rectangular sash windows sit within a surround - a sort of false architrave - of wide, rectangular egg-and-dart molding from window head to floor within which sits a narrower roundheaded molding crowned with a foliate cartouche. Foliate bas-relief scrollwork fills the space between the upper corners of the rectangular and roundheaded panels. A wainscot with rectangular inset panels and a capping dado run low around the walls helping to create the high-ceilinged look of the room. A wide egg-and-dart cornice tops the room, above which arcs a shallowly-vaulted ceiling arcing gently from north to south. On the west wall sits a projecting fireplace with white marble neoclassical mantle. The mantelpiece has a central swag motif in bas-relief with flanking spears on the vertical members. Pocket doors lead into the drawing room from the den and main hall, surrounded by narrow architraves.

United States Department of the Interior
National Park Service

NATIONAL REGISTER OF HISTORIC PLACES
CONTINUATION SHEET

Scott House
City of Richmond, Virginia

Section 7 Page 4

Den

The den is a much smaller-scale, more masculine and darker room than the drawing room, contrasting significantly with the adjacent space. Dark woodwork, low ceilings and a large, ornate mantle contribute to the enclosed feeling of the space. The ceiling is paneled with heavy, dark wood beams. High, dark wainscot with inset panels and heavy but simple architraves are continued in the dark wood. Centered on the north wall is a large stone Francois I mantel featuring elaborate scrolling, foliate patterns, *putti* and a central shield above a large inset panel of multicolored tesserae of scrolled designs surrounding a letter "S". Door surrounds and bookcases are decorated with Chinese blind fretwork.

Service Areas

The service areas have been significantly altered from the original configuration. Elisabeth Scott Bocock reconfigured the service areas into a three-bedroom apartment in 1955. The pantry has been converted into a modern kitchen, although it retains some original cabinetry, the silver safe and plate warmers. The Kitchen, Servant's Hall and Store Room have been converted into bathroom and storage space. The Kitchen Loggia has been enclosed and is currently used as a meeting room.

Grand Staircase

The Grand Staircase is a double-return stair featuring a wooden rail supported by decorative Renaissance-style ironwork. The double-height space of the landing is surrounded by a second-floor gallery. Slender fluted columns with Ionic capitals ring the gallery space and support a heavy cornice and segmented octagonal dome with central stained light.

Second Floor

Despite their use as student rooms and subsequent conversion into university administrative offices, the five family bedrooms on the second story remain very much intact. The second story of the service wing, however, has been significantly altered, first as a result of the 1955 apartment conversion, then later when it was remodeled to house the suite of offices for Virginia Commonwealth University's President and staff.

The family bedrooms are arranged around a hall which creates the gallery space overlooking the stair. The bedrooms are all of similar size and arrangement, with connecting doors giving access to shared bathrooms. Each bedroom has a fireplace with decorative mantel and matching frieze, and decoration of the bedrooms mirrors the styles used in the principal rooms – neo-classical, gothic revival, French. There is no real hierarchy within the bedrooms, and hence no true master suite. The bedroom on the southeast corner of the house, however, has traditionally been occupied by the owners.

The decoration in the three north-facing bedrooms is more elaborate than that of its counterparts on the back of the house. The northeast bedroom, labeled "Bedroom 1" in the plans, features a wide cornice with frolicking *putti* and foliage in relief. Above that, a cornice of urns and garlanded swags run along the ceiling. A mantel of similar style sits on the east wall of the room. Paired fluted columns topped by Ionic capitals support a wide mantel with figurative insets painted to resemble Jasper-ware. "Bedroom 2" is decorated in gothic revival style and features an ogival frieze and other decorative plasterwork. "Bedroom 3" is decorated in an eighteenth-century French style with a heavy dentil cornice punctuated by large scrolls and a neo-Rococo plaster ceiling. "Bedroom 5" has an Adamesque neo-classical fireplace and a cornice decorated with grapevine swags and bows. "Bedroom 4" does not retain its original decorative scheme.

United States Department of the Interior
National Park Service

NATIONAL REGISTER OF HISTORIC PLACES
CONTINUATION SHEET

Scott House
City of Richmond, Virginia

Section 7 Page 5

Carriage House—Contributing Building

Exterior

A Tudor-style, half-timbered carriage house, begun in 1902 as the first building on the property, sits to the rear of the house. Although the carriage house had originally been separated from the main residence by a city alley, the property has since absorbed the thoroughfare, which has been turfed-over so that the carriage house now sits facing a lawn. The carriage house is a shallow-L in plan – a conical stair tower acts as the fulcrum for the gambrel-roofed, two-story residential and office space to the east and the low-eaved, single story stables to the west. The carriage house exterior walls are of pale beige brick, with half-timbering and pebbledashing facing the upper story. Quoining is evident at doors, windows and exterior corners. Fenestration consists of casement windows with diamond-shaped leaded glass.

Interior

The carriage house is entered by humans at a door at the base of the tower, by horses at a large paneled door at the front of the stables. The stable area is entirely open. Walls are of wide white tile above a rubbed red brick wainscot and dado. The beautiful ceiling is dark wood hammerbeam, with pendants perforating the crossbeams. The main stable area can be separated from an adjacent room by use of a sliding partition door. The upper story is reached via a spiral stair within the conical tower. Upstairs are a bedroom and office space, all paneled with dark wood and featuring built-in closets and bookcases. There is also a small bathroom.

United States Department of the Interior
National Park Service

Scott House
City of Richmond, Virginia

8. Statement of Significance

Applicable National Register Criteria (Mark "x" in one or more boxes for the criteria qualifying the property for National Register listing)

- A Property is associated with events that have made a significant contribution to the broad patterns of our history.
- B Property is associated with the lives of persons significant in our past.
- C Property embodies the distinctive characteristics of a type, period, or method of construction or represents the work of a master, or possesses high artistic values, or represents a significant and distinguishable entity whose components lack individual distinction.
- D Property has yielded, or is likely to yield information important in prehistory or history.

Criteria Considerations (Mark "X" in all the boxes that apply.)

- A owned by a religious institution or used for religious purposes.
- B removed from its original location.
- C a birthplace or a grave.
- D a cemetery.
- E a reconstructed building, object, or structure.
- F a commemorative property.
- G less than 50 years of age or achieved significance within the past 50 years.

Areas of Significance (Enter categories from instructions)

Architecture, Art, Conservation

Period of Significance: 1902-1957

Significant Dates: 1907

Significant Person (Complete if Criterion B is marked above):

Scott Family (specifically Mary Wingfield Scott and Elisabeth Scott-Bocock)

Cultural Affiliation: NA

Architect/Builder: Henry Baskervill, of the firm of Noland and Baskervill

Narrative Statement of Significance (Explain the significance of the property on one or more continuation sheets.)

9. Major Bibliographical References

(Cite the books, articles, and other sources used in preparing this form on one or more continuation sheets.)

Previous documentation on file (NPS)

- preliminary determination of individual listing (36 CFR 67) has been requested.
- previously listed in the National Register
- previously determined eligible by the National Register
- designated a National Historic Landmark
- recorded by Historic American Buildings Survey # _____
- recorded by Historic American Engineering Record # _____

United States Department of the Interior
National Park Service

NATIONAL REGISTER OF HISTORIC PLACES
CONTINUATION SHEET

Scott House
City of Richmond, Virginia

Section 8 Page 6

8. SUMMARY STATEMENT OF SIGNIFICANCE

The Scott-Bocock House is eligible under **Criterion C (Architecture; Art)** with statewide significance for the architectural design by prominent Richmond firm, Noland & Baskervill, and the interior plasterwork and sculpture by Ferruccio Legnaioli; it is also eligible under **Criterion B (Conservation)** for its association with the Scott family of Richmond, specifically Mary Wingfield Scott and Elisabeth Scott-Bocock, who were important early preservationists in the city. The architecture firm and sculptor are both significant within the history of design in Richmond, and the Beaux-Arts residence they created is highly unusual in terms of scale and style within the context of Virginia. The period of significance begins in 1902, the date construction began on the carriage house, and extends to the 50-year cutoff, 1957, as the Scott family was still involved with preservation and living in this house well past 1957.

HISTORICAL BACKGROUND

Frederic William Scott, founder of the brokerage firm Scott and Stringfellow, was one of the most influential financiers in Virginia. Born August 30 1862 in Petersburg, Virginia, to Frederic Robert and Sarah Frances Branch, Scott was educated at Princeton University, and began his professional life as a clerk in his grandfather's banking firm Thomas Branch and Company in Richmond. He then became a partner in the leaf tobacco commission firm of Arrington and Scott, and later a partner in Shelburne and Scott, a tobacco warehousing firm, and latter still in Adams and Scott, re-handlers of leaf tobacco, in Oxford, N.C.²

In 1893, Scott and Charles S. Stringfellow Jr. organized the firm of Scott & Stringfellow, investment bankers, which was his principal business until his death. Scott also became involved in many other business interests, eventually became a director of several of the country's largest corporations, including the Atlantic Coast Line Railroad. Scott was director of Merchants National Bank, which was established in 1870 by his father and grandfather. (Merchants National Bank was consolidated with First National Bank to form First and Merchants National Bank in 1926.) In 1900, Scott, B.B. Munford, and Virginius Newton organized the South Atlantic Life Insurance Company, later the Atlantic Life Insurance Company. At the time of his death, Scott was a director of the Louisville and Nashville Railroad Company, the Richmond Terminal Company, General American Investors Company, and the Atlantic Land and Improvement Company. During World War I, Scott was a member of the Division of Finance and Purchase of the United States Railway Administration.³

Scott held great interest in the cause of higher education. In recognition of this, he was made a member of the Board of Visitors at the University of Virginia in 1920, and in 1930 was elected Rector, an unusual honor for someone who was not an alumnus. In addition to serving the University of Virginia as a Visitor and Rector, Scott donated Scott Stadium, which replaced the old Lambeth Field. Scott Stadium, modernized through donations by generations of the Scott family, remains in use. Scott died on September 24, 1939 at his country house, Royal Orchard in Albemarle County, at 77 years of age. He is buried in Richmond's Hollywood Cemetery.

In 1893 Scott married Elisabeth Mayo Strother. They had five children, Buford, Frederic William Jr., Elisabeth (later Mrs. John H. Bocock), Mary Ross (later Mrs. William Thomas Reed), and Isabel (later Mrs. Edward C. Anderson). Elisabeth Mayo Strother Scott acquired the land on which the Scott House was constructed as a bequest from Richmond tobacco magnate Lewis Ginter, on Sept. 30, 1902. Building

United States Department of the Interior
National Park ServiceNATIONAL REGISTER OF HISTORIC PLACES
CONTINUATION SHEETScott House
City of Richmond, VirginiaSection 8 Page 7

plans for the site, however, were already underway before the land had been obtained. Frederic Scott had already approached Noland & Baskervill to design a carriage house for the property – drawings held in the Virginia Historical Society are dated July 1902⁴. Although an unusual reversal on the way most domestic projects are commissioned, it is generally believed that the shrewd financier contracted the smaller building first as a trial run for the larger project. The result is remarkably well-appointed for a carriage house – picturesque massing, close attention to detail and rich materials are hallmarks of the little building's design. The half-timbered Tudor-style building is much more elaborate than other carriage houses of a similar size and appears to be exactly what it is – an individual project rather than a subsidiary outbuilding. Evidently, the Scotts were pleased with the carriage house and commissioned Noland & Baskervill to design the main residence in 1906. As a friend of Frederic Scott's, the commission fell to Henry Baskervill, who developed the design that same year.⁵ By March 1907, the firm had created plans⁶, and drew up specifications in October 1908.⁷ The City of Richmond approved the specifications on December 17, 1908.⁸

Scott's wife Elisabeth died on December 10, 1930. The land, which had always been in her name, was transferred by the terms of her will to Frederic on Dec. 31, 1930. On Dec. 29, 1944, the land was deeded to Frederic W. Scott, Jr. from his father. On June 27, 1946, the land was deeded to Elisabeth Scott-Bocock (daughter of Frederic W. Scott Sr. and Elisabeth Scott), from her brother, Frederic W. Scott Jr. Elisabeth Scott-Bocock lived in the house until her death in 1984.

As a measure of both economy and convenience, Elisabeth Scott Bocock reorganized the rear service quarters into a comfortable apartment and lived there with her husband while renting out the front rooms to female students at Virginia Commonwealth University. Elisabeth Scott-Bocock's daughter writes that, "using her own architectural instincts, she had transformed the whole back end of 909, the kitchen, servant's dining room, and upstairs bedroom, into an elegant three-bedroom apartment separate from the rest of the house. The living room / dining room stretched across the whole south-facing back of the house, its French doors and windows framing the beauty of the garden she worked so hard on."⁹ From 1963-2002, portions of the house were rented to students as apartments and other portions were used for VCU offices, though Elisabeth Scott-Bocock continued to live in the rear apartment until her death in 1984. Her daughter sold the house to VCU in 1991, and it remains in the university's hands today.

The Scott Family and Preservation in Richmond

Members of the Scott family are among the most significant figures in the preservation movement in Richmond. Elisabeth Scott Bocock, the middle child of Frederic and Elisabeth Scott, was a founding member of the William Byrd Branch of the Association for the Preservation of Virginia Antiquities, where she began to share her cousin, Mary Wingfield Scott's, passion for preservation.¹⁰ Together, Bocock and Scott alternately encouraged and cajoled city and state officials to preserving Richmond's historic architecture. They became adept at raising funds (often quietly augmented by their own) to purchase and restore threatened historic properties. In 1956, Bocock helped found the Historic Richmond Foundation, an organization designed to move quickly to rescue a threatened historic property.

Mary Ross Scott Reed was the youngest child of Frederic and Elisabeth Scott. While quietly avoiding the spotlight, she was also an ardent preservationist, purchasing and restoring many endangered homes on Richmond's Church Hill and in Goochland County. Far less visible than her sister and cousin, without fanfare she quietly supported many important preservation projects and organizations, and underwrote the publication of several books.

United States Department of the Interior
National Park Service

NATIONAL REGISTER OF HISTORIC PLACES
CONTINUATION SHEET

Scott House
City of Richmond, Virginia

Section 8 Page 8

Perhaps the best-known preservationist among the Scott family was Mary Wingfield Scott, a cousin of Elisabeth Scott Bocock and Mary Ross Scott Reed. Scott wrote two authoritative and as-yet unsurpassed books on the architecture of Richmond, *Houses of Old Richmond* (New York, Bonanza Books, 1941), and *Old Richmond Neighborhoods* (Richmond, William Byrd Press, 1950). Scott purchased seven of the eight houses of Linden Row and restored them, and purchased other threatened buildings throughout Richmond, quietly restoring them and selling them on to individuals who would care for them. Preservation in Richmond can largely be said to have begun with the Scott sisters, Elisabeth Scott Bocock and Mary Ross Scott Reed, and their cousin Mary Wingfield Scott. Together they combined wealth, social connections, love of history, and a passion for preservation to save countless historic houses in Richmond.¹¹

In Mary Buford Hitz's biography of her mother, Elisabeth Scott Bocock, she writes of the importance that the Scott-Bocock House played in the early days of the family's preservation efforts. The Breakfast Room was the war room, so to speak, for the architecture-loving cousins. "Cousin Mary Wing would take several purposeful strides that brought her to the swinging door on the opposite side of the pantry, which in turn banged into the wall in the breakfast room she was entering..." "Elisabeth!" she would shout as she waved the morning's newspaper over her head, "Look at this!"¹² Hitz writes that her father would immediately vacate the breakfast room to avoid the pandemonium, whilst Mary Wingfield Scott and Elisabeth Scott Bocock developed a strategy to save whatever piece of Richmond architecture was being threatened that day.

While the initial strategy took place in the Breakfast Room, the real preservation push happened in the kitchen. Hitz writes: "If Mother and Cousin Mary Wing decided that a lobbying luncheon was called for, Cora [the Bocock's cook] was often their chief weapon. It was not unusual for her to turn to and produce a business lunch four hours after the preservation crisis of the moment had been introduced into the house."¹³ More than one building, it seems, owes its salvation to the lightness of Cora's soufflés.

The Beaux-Arts in Virginia

The Scott-Bocock House represents a highly unusual example of Beaux-Arts domestic architecture in Virginia. Although the Beaux-Arts style was applied to the design of commercial structures – most notably bank design – and to other public buildings in Virginia, the style did not achieve the dominance in Virginia that it did in the Northeast. Very few residences in the state were completed in a true Beaux-Arts style – Renaissance detailing, complex spatial arrangements, giant orders and attic stories executed in ashlar masonry – apart from the Scott-Bocock House.

The Scott-Bocock House appears during what Richard Guy Wilson has identified as the high period of the American Renaissance.¹⁴ This period is ushered in with the McKim, Mead and White commission for the Boston Public Library in 1887 and ends in 1917 with the end of Beaux-Arts hegemony in the American architectural education. During this time, the Beaux-Arts style ceases to exist almost exclusively in the realm of housing for the wealthy, but expands to become the favored style for important civic projects. Wilson argues that this is due to a shift in the American perception of the Renaissance – recognizing it as a time of scientific exploration and artistic excellence – and a belief in the American nation as the natural heir to the Renaissance lineage.

More salient, perhaps, is the Renaissance's association with capitalist imperialism – the personal empires created by the Medici, the Strozzi, the Pazzi – or, going further back, to its roots in the original Western empire, Rome. Laissez-faire capitalism had allowed individuals to create vast personal empires and, in

United States Department of the Interior
National Park Service

NATIONAL REGISTER OF HISTORIC PLACES
CONTINUATION SHEET

Scott House
City of Richmond, Virginia

Section 8 Page 9

addition to the United States government's imperialist agenda of Manifest Destiny, the private empire-builders had their own. These capitalists were a new group, made up of individuals outside the New England Brahmin elite and anxious to identify themselves as the new ruling caste. The Beaux-Arts was their architectural expression of choice and can be seen as "the cultural reflex of the end of the 'heroic' period of laissez-faire capitalism, a period in which new forms of authority were being constructed in the city and in which new elites sought to overcome their cultural insecurity in relation to the European tradition."¹⁵ As the residence of an *arriviste* financier in a city with a well-established social hierarchy, the Scott-Bocock House can certainly be viewed as part of this cultural zeitgeist.

The Beaux-Arts began to influence Virginia's architecture during the high period of the American Renaissance, in the opening decade of the twentieth century. Contemporaneous with the 1907 construction of the Scott-Bocock residence are three other important Beaux-Arts projects in Virginia: First National Bank, Lynchburg (1902), the Handley Library, Winchester (1904-13) and the Jamestown Tercentennial Exposition, Norfolk (1907).

The earliest of these - the First National Bank - was designed in a combination of Roman Revival and Beaux-Arts styles by local Lynchburg architects, Frye & Chesterman. Chesterman had previously trained with Scott-Bocock architects Noland & Baskervill, and it was his introduction to Frye's firm which brought with it the Beaux-Arts influence seen in the firm's work at the First National Bank. Noland & Baskervill can therefore be seen as an early influence on the introduction and dissemination of the Beaux-Arts style within the state of Virginia.

Handley Library in Winchester is by far the most typical example of a pure French Beaux-Arts building in 1900s Virginia. Although begun in 1904, plans were not finalized until 1908, therefore slightly postdating construction of the Scott-Bocock residence. A highly formal design constructed in ashlar masonry and exhibiting monumentality, opulent detailing and complex spatial arrangements, the Handley Library exhibits a level of sophistication and ability in handling Beaux-Arts forms which is unusual for the region. As with nearly all examples of the Beaux-Arts in Virginia, the library was the product of a Northern architect; in this instance, Columbia University-trained architect, J. Stewart Barney of New York.

By far, the most public Beaux-Arts project in Virginia was the 1907 Jamestown Tercentennial Exposition in Norfolk. Clearly influenced by the Beaux-Arts form and scale used at the "White City" - the Court of Honor at the 1893 World's Columbian Exposition in Chicago - the architects of the Jamestown Exposition employed a similar scale and style to their buildings, but applied them to native Virginia architectural forms rather than continental ones. The result was a monumental expression of colonial American architectural forms - more grand, formal and public than the more economically-constrained, often domestic models of the early republic. Material and decoration were the expressions of Virginia's architectural heritage within the design of these buildings; these could easily be accommodated superficially within a Beaux-Arts design program.

Although the chairman of the design board for the exposition was Norfolk architect, John Kevan Peebles, the actual building design fell to Boston-based architects: Parker & Thomas, Warren Manning and Robert S. Peabody. Whether influenced by the more continentally-inspired architectural fashions of the Northeast or by training received in architecture schools organized in emulation of the Ecole des Beaux-Arts, architects from the northeastern United States were more conversant in the Beaux-Arts style than

United States Department of the Interior
National Park Service

NATIONAL REGISTER OF HISTORIC PLACES
CONTINUATION SHEET

Scott House
City of Richmond, Virginia

Section 8 Page 10

were Virginia's architects. John Russell Pope and McKim, Mead and White would all later build in the Beaux-Arts tradition in Virginia, but the firm of Noland & Baskervill is a rare example of local architects building in this non-native style.

Henry Baskervill

Henry Baskervill (1867-1946) was a native of Richmond, and studied electrical engineering at Cornell University. Baskervill was named Richmond city engineer in 1895, and formed a partnership with architect William C. Noland in 1897. The resulting firm, Noland and Baskervill, became one of the most significant firms in Richmond, winning many of the most important commissions in that city over the next two decades. Noland retired in 1917, at which time Alfred Garey Lambert became Baskervill's partner from 1918-1931, and the firm became Baskervill & Lambert. H. Coleman Baskerville [sic] joined the firm in 1932, at which time it became Baskervill & Son. The firm remains active today under that name. Projects undertaken by Noland & Baskerville include alterations and additions to the Virginia State Capitol (1902-1906); Second Baptist Church, 9 West Franklin St, Richmond (1902-1906); Temple Beth Ahabah, West Franklin and Ryland streets, Richmond (1902-1904); St. James' Episcopal Church, 1205 West Franklin Street, Richmond (1911-1912); The James Dooley country house Swannanoa, Nelson County (1911-1915); and, with John Russell Pope, the Frederic W. Scott country house Royal Orchard, Albemarle County (1913).¹⁶

Ferruccio Legnaioli

The Scott-Bocock residence is rich with ornamental sculpture and plasterwork. In the work contract for the Scott-Bocock House, it stipulates that Noland & Baskervill are responsible for the interior design of only the Hall, Main Stair and its domed gallery; "decorative plaster in unfinished rooms of first floor will be included in another contract, but the plain wall and ceiling plaster is included in this contract."¹⁷

The decorative plasterwork and sculpture in the Scott-Bocock residence fell to Ferruccio Legnaioli, an Italian artist working in Richmond. Legnaioli was born in Lucca around 1874 and was trained at the Royal Academy of Fine Arts in Florence. He immigrated to the United States in 1902, working in New York and then in Charlottesville for McKim, Mead & White, where he assisted Stanford White in the decoration of the University of Virginia, including the barrel-vault ceiling of Garret Hall. After four years doing decorative work for the firm, Legnaioli settled in Richmond where he opened a sculpture and plaster ornamentation shop with Italian-American businessman, Frank Fernandini. The two worked together until the 1920s when Legnaioli opened his own decorative arts studio, also in Richmond, where he worked until his death in 1958.

Legnaioli was incredibly successful in Richmond and worked frequently with important local architects such as William Lawrence Bottomley and Noland & Baskervill. He is responsible for numerous high-profile commissions including the Byrd, Empire, National and Colonial theaters, the State Office Building, the Supreme Court Building, the Shockoe Slip fountain and the statues of Christopher Columbus in Byrd Park as well as the First Virginia Militiaman at Park and Stuart Avenues.

Legnaioli's reputation was not, however, confined to the Richmond area. Back in Italy, his talents were recognized in 1929 by King Victor Emmanuel III who admitted Legnaioli to the Order of the Crown of Italy – the highest order in the Italian honors system. Furthermore, of the five classes of the order, Legnaioli was conferred the highest and was made a Knight of the Grand Cross. This was the greatest honor that could be bestowed on a civilian and was granted in recognition of Legnaioli's artistic achievements.

United States Department of the Interior
National Park Service

NATIONAL REGISTER OF HISTORIC PLACES
CONTINUATION SHEET

Scott House
City of Richmond, Virginia

Section 8 Page 11

Unfortunately, not enough is known about Legnaioli and his work. He left almost no written record of his work, so there is little of his work that can be positively identified as his. It is known that he was responsible for the decoration of numerous houses in Richmond's fashionable Fan District, but without documentation, it is impossible to know for sure which ones. However, in the plasterwork decoration and sculpture of the Scott-Bocock House, we have a rare example of Legnaioli's domestic work that has been positively identified and survives intact.

As is often the case with grand residences, the Scott-Bocock House was used as a political tool whose intent is to overawe the visitors with its grandeur and coerce them round to the thinking of the owner. In this case, however, the house was the center of a long-standing and influential campaign to preserve Richmond's architecture. The house represents not only the work that was accomplished within its walls, but also the lives of two extraordinary and dedicated women who worked tirelessly to protect Richmond's architectural heritage.

United States Department of the Interior
National Park Service

Scott House
City of Richmond, Virginia

Primary Location of Additional Data

State Historic Preservation Office: Department of Historic Resources
 Other State agency: Library of Virginia
____ Federal agency
____ Local government
 University: Virginia Commonwealth University
 Other: Virginia Historical Society

10. Geographical Data

Acreage of Property: .75498 acreage

UTM References (Place additional UTM references on a continuation sheet)

Zone	Easting	Northing	Zone	Easting	Northing
1	18	283435E	4	15	8536N

Verbal Boundary Description (Describe the boundaries of the property on a continuation sheet.)
Boundary Justification (Explain why the boundaries were selected on a continuation sheet.)

11. Form Prepared By

name/title:	<u>Jennifer Parker (DHR); Bryan Clark Green, Architectural Historian</u>		
organization:	<u>Virginia Department of Historic Resources</u>	date:	<u>August 13, 2007</u>
street & number:	<u>2801 Kensington Avenue</u>	telephone:	<u>(804) 367-2323</u>
city or town:	<u>Richmond</u>	state:	<u>VA</u>
		zip code:	<u>23221</u>

Additional Documentation

Submit the following items with the completed form:

Continuation Sheets

Maps

- A USGS map (7.5 or 15 minute series) indicating the property's location.
- A sketch map for historic districts and properties having large acreage or numerous resources.

Photographs

Additional items (Check with the SHPO or FPO for any additional items)

Property Owner

(Complete this item at the request of the SHPO or FPO.)

name:	<u>Mr. Brian Ohlinger, Associate Vice President, Facilities Management</u>		
street & number:	<u>Virginia Commonwealth University, 700 West Grace Street</u>		
city or town:	<u>Richmond</u>	state:	<u>Virginia</u>
		zip code:	<u>23284-2502</u>

Paperwork Reduction Act Statement: This information is being collected for applications to the National Register of Historic Places to nominate properties for listing or determine eligibility for listing, to list properties, and to amend existing listings. Response to this request is required to obtain a benefit in accordance with the National Historic Preservation Act, as amended (16 U.S.C. 470 et seq.). A federal agency may not conduct or sponsor, and a person is not required to respond to a collection of information unless it displays a valid OMB control number.

Estimated Burden Statement: Public reporting burden for this form is estimated to average 18.1 hours per response including the time for reviewing instructions, gathering and maintaining data, and completing and reviewing the form. Direct comments regarding this burden estimate or any aspect of this form to Keeper, National Register of Historic Places, 1849 "C" Street NW, Washington, DC 20240.

United States Department of the Interior
National Park Service

NATIONAL REGISTER OF HISTORIC PLACES
CONTINUATION SHEET

Scott House
City of Richmond, Virginia

Section 9 Page 12

9. BIBLIOGRAPHY

Brownell, Charles E., Calder Loth, William M. S. Rasmussen and Richard Guy Wilson. *The Making of Virginia Architecture*. Charlottesville: Virginia Museum of Fine Arts, 1992.

Carneal, Drew St. J. *Richmond's Fan District*. Richmond: Historic Richmond Foundation, 1996.

Churn, Virginia. "Century Mark: Firm of Baskervill & Son has left imprint on Richmond architecture over 100 years." *Richmond Times-Dispatch*, May 18, 1997.

Dabney, Virginius, *Richmond: the Story of a City*. Rev. ed. Charlottesville: University Press of VA, 1990.

"General Conditions and Specifications for Erection of a Residence on Franklin St. between Shafer and Harrison Sts. Richmond, Va for Mr. Frederick [sic] W. Scott, October 1908. Noland & Baskervill, Architects and Engineers. The Library of Virginia, City of Richmond, Office of Permits and Inspections, Permits and Drawings Collection. Control No. 116.

Gibson, Langhorne Jr. *My Precious Husband: The Story of Elise & Fred Scott*. Richmond: Cadmus Fine Books, 1994.

Gibson, Langhorne Jr. *Scott & Stringfellow: The First Hundred Years*. Richmond: Scott & Stringfellow Financial, Inc., 1993.

"Heart Attack Proves Fatal to F.W. Scott." *Richmond Times-Dispatch*, September 25, 1939.

Hitz, Mary Buford. *Never Ask Permission: Elisabeth Scott Boccock Of Richmond*. Charlottesville: University Press of Virginia, 2000.

"Inventory and Appraisal of Property Belonging to the Estate of the Late Frederic William Scott, Located at 'Royal Orchard,' Afton, Virginia, and at 909 West Franklin Street, Richmond, Virginia." New York: Parke-Bernet Galleries, 1940. Mary Ross (Scott) Reed (1906-1991), Papers, 1937-1991, Virginia Historical Society. Mss1 R2515a 37.

Mullen, Betsy Powell. "Renaissance Man Remembered: Efforts made to preserve work of artist who helped give city its unique look." *Richmond Times-Dispatch*, July 23, 1994.

"Residence for Frederic W. Scott, Esq., Richmond Va." March 1907. Noland & Baskervill, Architects, Richmond, VA. Virginia Historical Society, Noland & Baskervill Architectural Plans Collection, Manuscripts and Archives, Virginia Historical Society.

Scott, Mary Wingfield, *Houses of Old Richmond*. New York: Bonanza Books, 1941.

Scott, Mary Wingfield, *Old Richmond Neighborhoods*. Richmond: William Byrd Press, 1950.

Wells, John E., and Robert E. Dalton. *The Virginia Architects, 1835-1955: A Biographical Dictionary*. Richmond: New South Architectural Press, 1997.

Wilson, Richard Guy, ed. *Buildings of Virginia: Tidewater and Piedmont*. New York: Oxford University Press, 2002.

United States Department of the Interior
National Park Service

NATIONAL REGISTER OF HISTORIC PLACES
CONTINUATION SHEET

Scott House
City of Richmond, Virginia

Section 10, Photographic Data

Page 13

10. GEOGRAPHICAL DATA

Verbal Boundary Description

Boundaries for the Scott House are less than one acre (0.754 acres). The property being nominated is identified as parcel W0000403007 on the tax parcel maps for the City of Richmond; and noted as Deed reference 00005, 0796 dated 12/12/1985, and IDID2001, 25623 dated 9/27/2001.

Boundary Justification

The boundaries are for the city lot that is historically associated with the Scott House.

PHOTOGRAPHIC DATA

All photographs are of:

The Scott House, City of Richmond, Virginia (VDHR File Number: 127-0228-0001)

Digital Photos taken by Jennifer Parker in August 2007

Digital Images are stored at the Virginia Department of Historic Resources, Richmond, Virginia

Photo 1 of 14: Exterior, East Corner of Main House

Photo 2 of 14: Exterior, East Corner of Main House

Photo 3 of 14: Exterior, SW Rear of Main House

Photo 4 of 14: Exterior, South Corner of Main House, Conservatory

Photo 5 of 14: Interior, Main Entry Formal Entrance Hall

Photo 6 of 14: Interior Detail, Paired pilasters with garlands topped by egg-and-dart molding

Photo 7 of 14: Interior, Entry into the Dining Room

Photo 8 of 14: Interior Detail, Neoclassical fireplace in Dining Room

Photo 9 of 14: Interior, Conservatory Windows, detailed Greco-Roman frieze, stained glass

Photo 10 of 14: Interior Stairwell

Photo 11 of 14: Interior, Dome with Stained Glass above entry hall

Photo 12 of 14: Interior, Main Entry Formal Entrance Hall

Photo 13 of 14: Interior, Second Floor, Children's Bathroom, Tile Detail

Photo 14 of 14: Exterior, Carriage House

United States Department of the Interior
National Park Service

NATIONAL REGISTER OF HISTORIC PLACES
CONTINUATION SHEET

Scott House
City of Richmond, Virginia

Section 8 Endnotes

Page 14

ENDNOTES

¹ The square footage is taken from the 2003 City of Richmond real estate assessment.

² "Heart Attack Proves Fatal to F.W. Scott." *Richmond Times-Dispatch* September 25, 1939.

³ "Heart Attack Proves Fatal to F.W. Scott." *Richmond Times-Dispatch* September 25, 1939.

⁴ "Carriage House." July 1902. Noland & Baskervill, Architects, Richmond, Va. Virginia Historical Society, Noland & Baskervill Architectural Plans Collection, Manuscripts and Archives, Virginia Historical Society. *Note: plans and drawings for the carriage house are separate from the "Residence for Frederic W. Scott, Esq., Richmond Va." collection. They are held in 1902-09, Series 1, Box 2.*

⁵ Langhorne Gibson, Jr. *My Precious Husband: The Story of Elise & Fred Scott*. (Richmond: Cadmus Fine Books, 1994), 107.

⁶ "Residence for Frederic W. Scott, Esq., Richmond Va." March 1907. Noland & Baskervill, Architects, Richmond, Va. Virginia Historical Society, Noland & Baskervill Architectural Plans Collection, Manuscripts and Archives, Virginia Historical Society.

⁷ "General Conditions and Specifications for Erection of a Residence on Franklin St. between Shafer and Harrison Sts. Richmond, Va for Mr. Frederick [sic] W. Scott, October 1908. Noland & Baskervill, Architects and Engineers. The Library of Virginia, City of Richmond, Office of Permits and Inspections, Permits and Drawings Collection. Control No. 116.

⁸ "General Conditions and Specifications for Erection of a Residence on Franklin St. between Shafer and Harrison Sts. Richmond, Va for Mr. Frederick [sic] W. Scott, October 1908. Noland & Baskervill, Architects and Engineers. The Library of Virginia, City of Richmond, Office of Permits and Inspections, Permits and Drawings Collection. Control No. 116.

⁹ Mary Buford Hitz, *Never Ask Permission: Elisabeth Scott Bocoock Of Richmond*. (Charlottesville: University Press of Virginia, 2000): 132.

¹⁰ Mary Buford Hitz, *Never Ask Permission: Elisabeth Scott Bocoock Of Richmond*. (Charlottesville: University Press of Virginia, 2000).

¹¹ Virginius Dabney *Richmond: the Story of a City* (Rev. ed. Charlottesville: University Press of Virginia, 1990), 368.

¹² Mary Buford Hitz, op. cit., 21.

¹³ *ibid.*, 23.

¹⁴ Richard Guy Wilson, "Architecture and the Reinterpretation of the Past in the American Renaissance," *Winterthur Portfolio*, Vol. 18, No. 1, Spring 1983, p. 72. For the purposes of this nomination, the terms American Renaissance and Beaux-Arts will be used interchangeably. While the Scott-Bocoock house falls under the umbrella of the American Renaissance, the term is intentionally broad to allow inclusion of the full panoply of classical manifestations that appeared during that time. I have chosen to refer to the Scott-Bocoock House specifically as Beaux-Arts, as this is the classical idiom being quoted.

¹⁵ David Brain, "Discipline & Style: The Ecole des Beaux-Arts and the Social Production of an American Architecture," *Theory and Society*, Vol. 18, No. 6, November 1989, p. 811.

¹⁶ John E. Wells and Robert E. Dalton. *The Virginia Architects, 1835-1955: A Biographical Dictionary*. (Richmond: New South Architectural Press, 1997), s.v. "Baskervill, Henry Eugene."

¹⁷ *General Conditions and Specification for Erection of a Residence on Franklin Street, between Schafer and Harrison Street, Richmond, VA, for Mr. Frederic W. Scott, October 1908*: 26.





SHEET NO. 5.
SCALE: 1/4" = ONE FOOT,
MARCH, 1907.

RESIDENCE FOR
FREDERIC W. SCOTT, ESQ.,
RICHMOND, VA.

NOLAND & BASKERVILLE,
ARCHITECTS,
RICHMOND, VA.

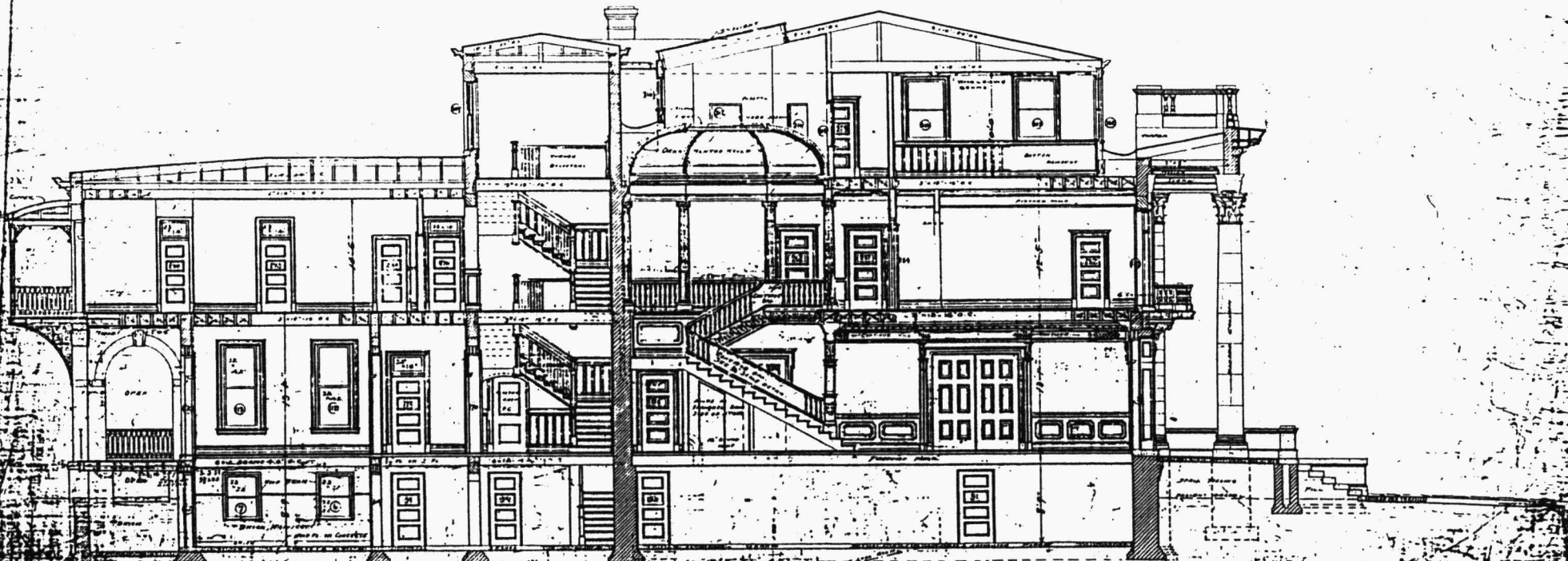


FRONT ELEVATION.

SHEET No. 9.
SCALE 1/4" = ONE FOOT,
MARCH, 1907.

RESIDENCE FOR
FREDERIC W. SCOTT, ESQ.,
RICHMOND, VA.

NOLAND & BASKERVILL,
ARCHITECTS,
RICHMOND, VA.

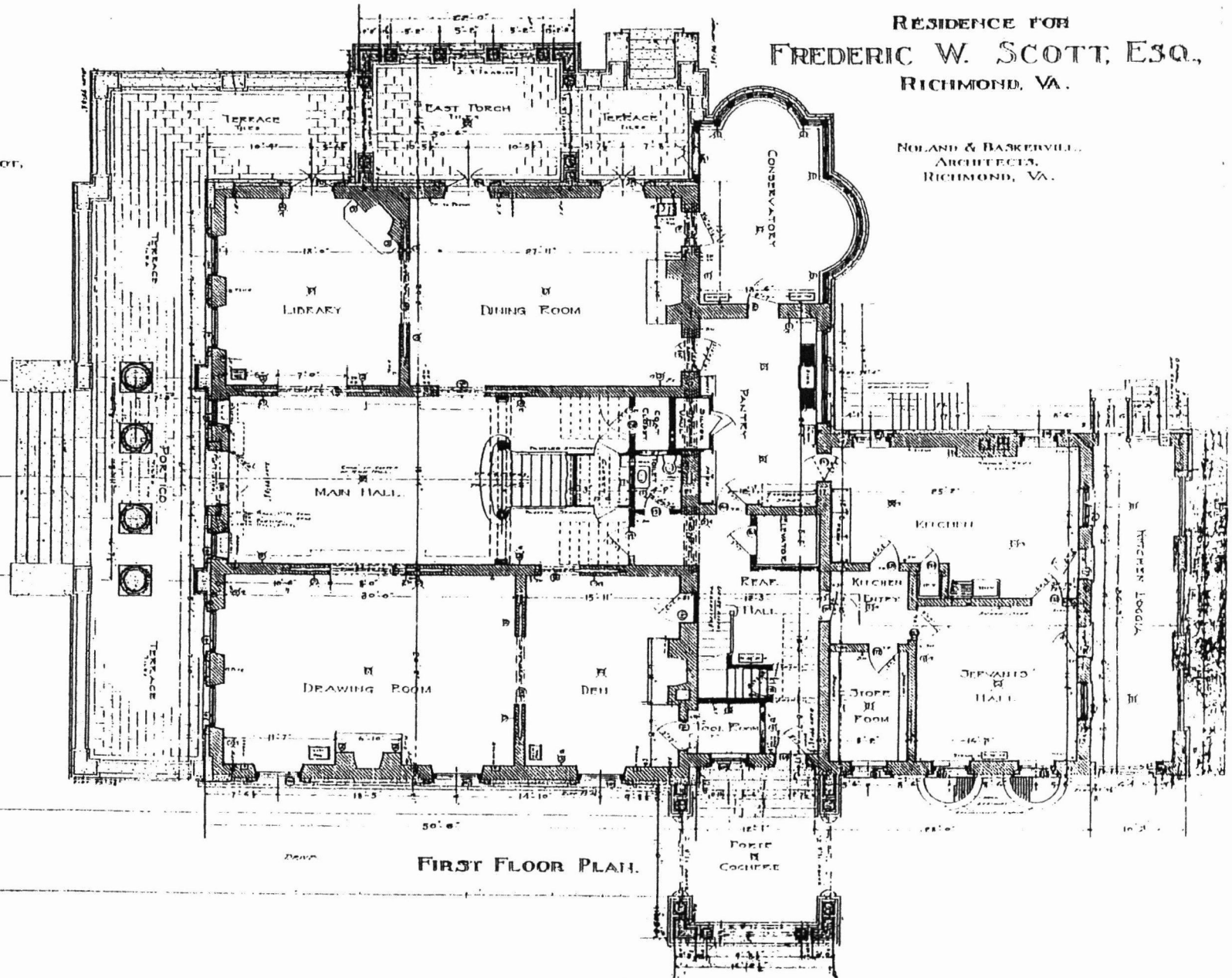


SECTION

RESIDENCE FOR
FREDERIC W. SCOTT, ESQ.,
RICHMOND, VA.

NOLAND & BASKERVILLE,
ARCHITECTS,
RICHMOND, VA.

SHEET NO. 2.
SCALE 3/4" = ONE FOOT.
MARCH, 1907.

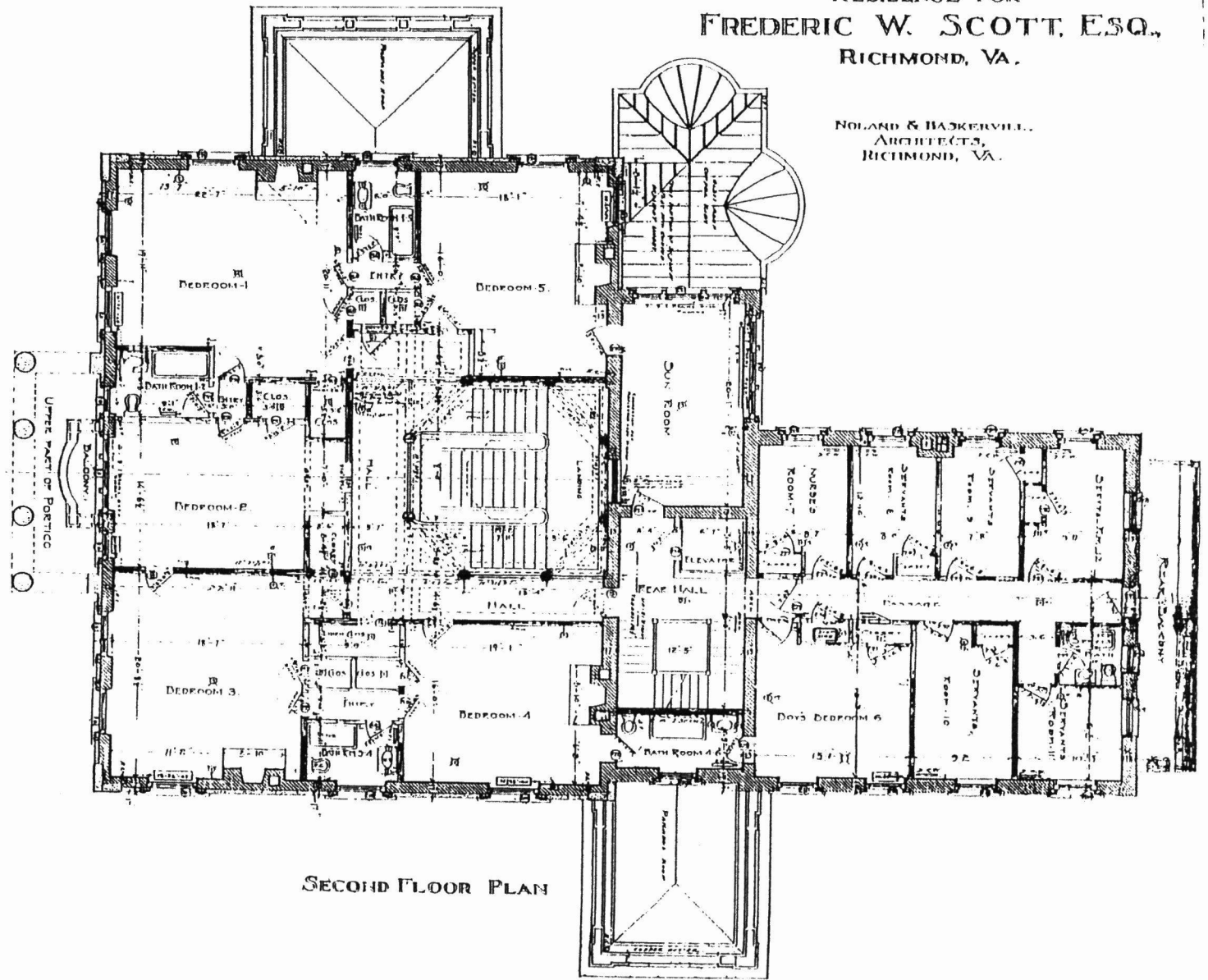


2
↑

RESIDENCE FOR
FREDERIC W. SCOTT, ESQ.,
RICHMOND, VA.

NOLAND & BASKERVILLE,
ARCHITECTS,
RICHMOND, VA.

SHEET NO. 3.
SCALE: 1/4" = ONE FOOT,
MARCH, 1907.

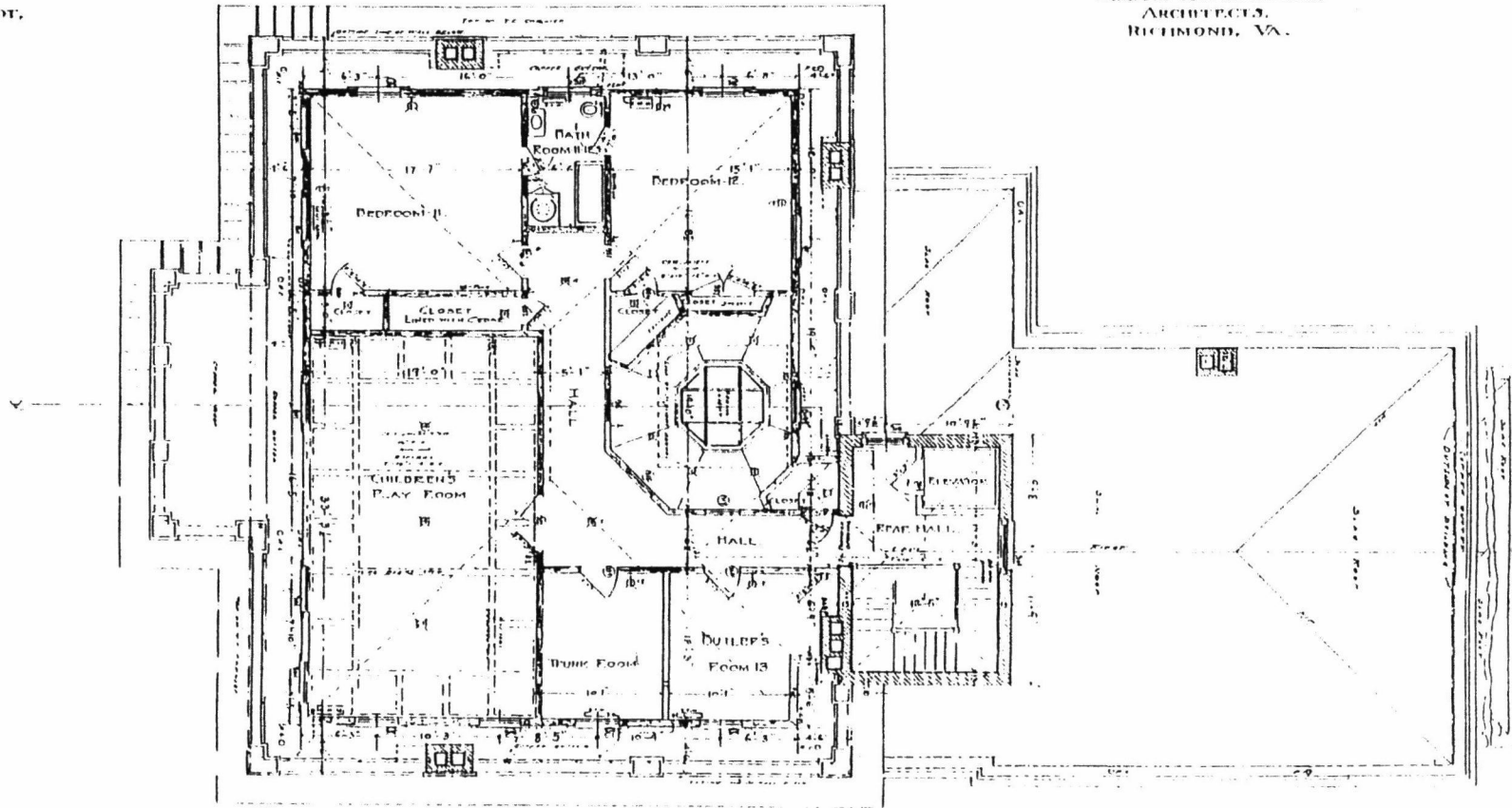


SECOND FLOOR PLAN

RESIDENCE FOR
FREDERIC W. SCOTT, ESQ.,
RICHMOND, VA.

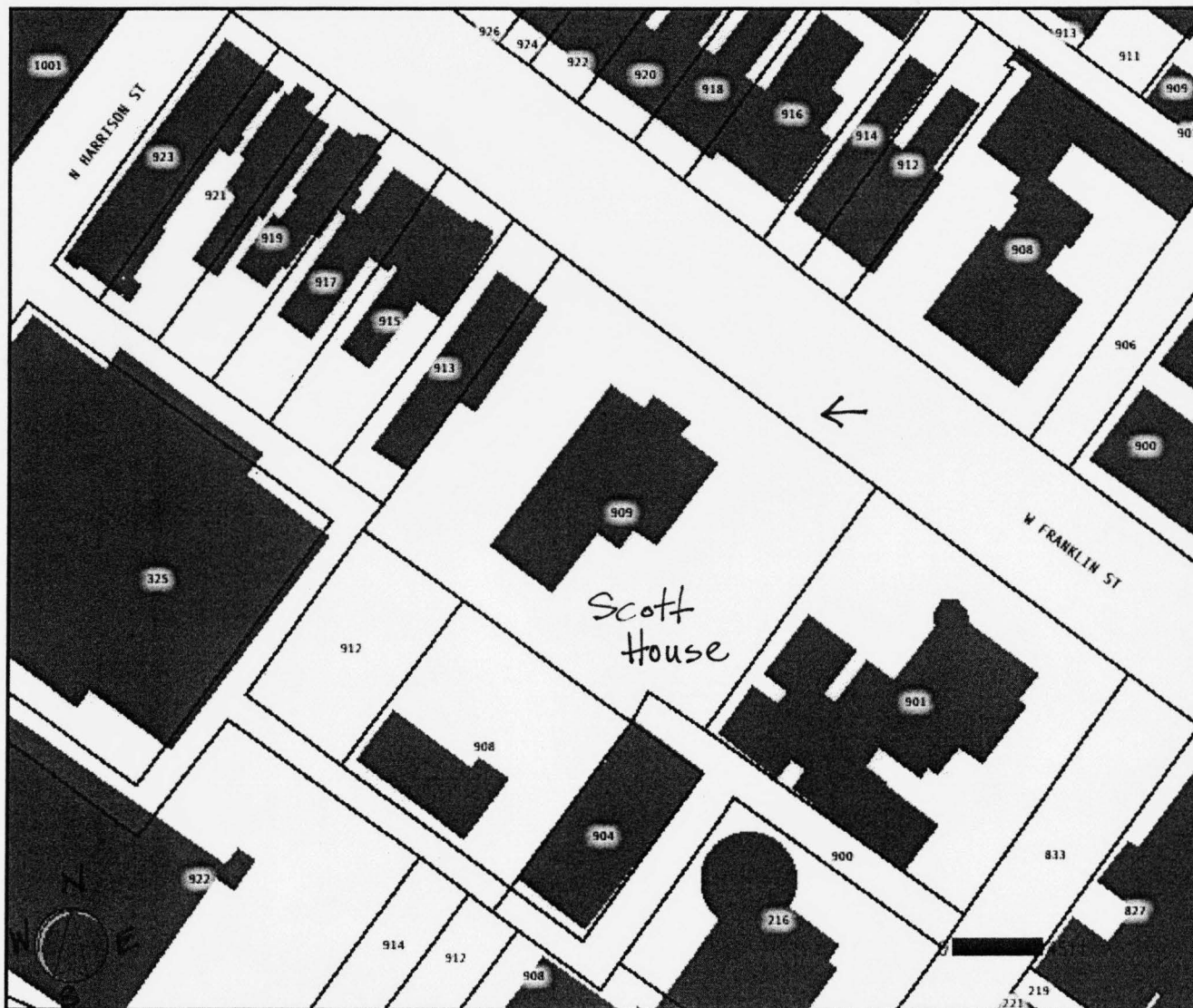
SHEET No. 4.
SCALE: $\frac{1}{4}$ " = ONE FOOT.
MARCH, 1907.

HOLAND & BASKERVILLE,
ARCHITECTS,
RICHMOND, VA.

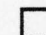
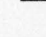

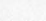


THIRD FLOOR PLAN.

WebMapper



LEGEND

-  Properties
-  Address Label
-  Buildings
-  Streets

WebMapper



LEGEND

TAX PARCEL

W0000403007



UNITED STATES DEPARTMENT OF THE INTERIOR
NATIONAL PARK SERVICE

NATIONAL REGISTER OF HISTORIC PLACES
EVALUATION/RETURN SHEET

REQUESTED ACTION: NOMINATION

PROPERTY NAME: Scott House

MULTIPLE NAME:

STATE & COUNTY: VIRGINIA, Richmond

DATE RECEIVED: 12/07/05 DATE OF PENDING LIST: 12/27/05
DATE OF 16TH DAY: 1/11/06 DATE OF 45TH DAY: 1/20/06
DATE OF WEEKLY LIST:

REFERENCE NUMBER: 05001545

REASONS FOR REVIEW:

APPEAL: N DATA PROBLEM: N LANDSCAPE: N LESS THAN 50 YEARS: N
OTHER: N PDIL: N PERIOD: N PROGRAM UNAPPROVED: N
REQUEST: N SAMPLE: N SLR DRAFT: Y NATIONAL: N

COMMENT WAIVER: N

ACCEPT RETURN REJECT 1/19/06 DATE

ABSTRACT/SUMMARY COMMENTS:

See attached Return Sheet for detailed comments.

RECOM./CRITERIA Return
REVIEWER Patricia Andrus DISCIPLINE Historian
TELEPHONE _____ DATE 1/19/2006

DOCUMENTATION see attached comments Y/N see attached SLR Y/N

If a nomination is returned to the nominating authority, the nomination is no longer under consideration by the NPS.





United States Department of the Interior

NATIONAL PARK SERVICE
1849 C Street, N.W.
Washington, D.C. 20240

rec'd 2/22/06
Tom

6/16/04 vlr

IN REPLY REFER TO:

United States Department of the Interior National Park Service

National Register of Historic Places Evaluation/Return Sheet



Property Name: Scott House (Richmond, Ind. City) VA
Reference Number: 05001545

Reason for Return:

The nomination is being returned for a number of substantive reasons. The property is nominated under National Register Criterion A with an associated Area of Significance "Broad Patterns of History." "Broad Patterns of History" is not an acceptable Area of Significance because it does not clearly define the historic importance of the Scott House. Please select an Area of Significance from pages 38-41 of the National Register Bulletin "How to Complete the National Register Registration Form" which more clearly defines the historic importance of the Scott House.

The Carriage House is listed in Section 5 of the form as being a contributing building, but the nomination form does not describe the Carriage House nor explain why it is considered contributing. Please provide a description of the Carriage House and an explanation of why it contributes to the historic or architectural importance of the Scott House.

The major portion of the description (Section 7) of the Scott House is taken from a 1910 newspaper article. Does this description still accurately describe the Scott House? Have there been any alterations to the Scott House since its construction? If so, please describe these alterations and evaluate the impact the alterations have had on the historic integrity of the Scott House.

The Scott House is nominated at the State level of significance, but there is no justification provided for this classification. Section 8 of the form describes the Scott House as "one of Richmond's most important architectural survivors from the great age of American patronage called the American Renaissance." Please provide an explanation of why the Scott House is considered to be of statewide significance. Is it for its historic or architectural importance, or both?



United States Department of the Interior

NATIONAL PARK SERVICE
1849 C Street, N.W.
Washington, D.C. 20240

IN REPLY REFER TO:

United States Department of the Interior National Park Service

National Register of Historic Places Evaluation/Return Sheet

Property Name: Scott House (Richmond, Ind. City) VA
Reference Number: 05001545

The nomination does not (except for the quote noted in the sentence above) provide an architectural context for which to evaluate the Scott House. Please describe other examples of Renaissance Revival Style buildings constructed in Richmond (or statewide if the house is considered of statewide architectural importance) and compare the Scott House to these other examples of the style.

The USGS map provided with the nomination is not an original map. The quality of the printing is very poor and the map is blurry. Please provide an original USGS map locating the Scott House.

Patrick Andrus
Patrick Andrus

Historian
National Register of Historic Places
1/19/2006

UNITED STATES DEPARTMENT OF THE INTERIOR
NATIONAL PARK SERVICE

NATIONAL REGISTER OF HISTORIC PLACES
EVALUATION/RETURN SHEET

REQUESTED ACTION: RESUBMISSION

PROPERTY NAME: Scott House

MULTIPLE NAME:

STATE & COUNTY: VIRGINIA, Richmond

DATE RECEIVED: 10/15/07 DATE OF PENDING LIST:
DATE OF 16TH DAY: DATE OF 45TH DAY: 11/28/07
DATE OF WEEKLY LIST:

REFERENCE NUMBER: 05001545

DETAILED EVALUATION:

ACCEPT RETURN REJECT 11/26/07 DATE

ABSTRACT/SUMMARY COMMENTS:

On resubmission, the State has addressed all issues noted in the Return Sheet.

RECOM./CRITERIA Accept BIC

REVIEWER Patrick Andrus

DISCIPLINE Historian

TELEPHONE _____

DATE 11/26/2007

DOCUMENTATION see attached comments Y/N see attached SLR Y/N



Scott Hbe Richmond, VA 127-288-0001

1/14



Scott Hbe Richmond, VA 127-288-0001

3/14



Scott Hbc Richmond, VA 127-288-0001

3/14



Scott Hbe Richmond, VA 127-288-0001

4/14



JOIN
THE
VCU
ALUMNI
ASSOCIATION
TODAY!

EXIT

Scott Hse Richmond, VA 127-288-0001

5/14



Scott Hse Richmond, VA 127-288-0001

6/14



Scott Hae Richmond, VA 127-288-0001

7/14



Scott Hse Richmond, VA 127-288-0001

8/14



Scott Hse
Richmond, VA

127-288-0001

9/14



Scott Hse
Richmond VA

127-288-0001 10/14



Scott Howe

Richmond, VA

127-288-0001

11/14



Scott House Richmond, VA 127-288-0001 12/14



Scott Hse Richmond VA 127-288-0001 13/14

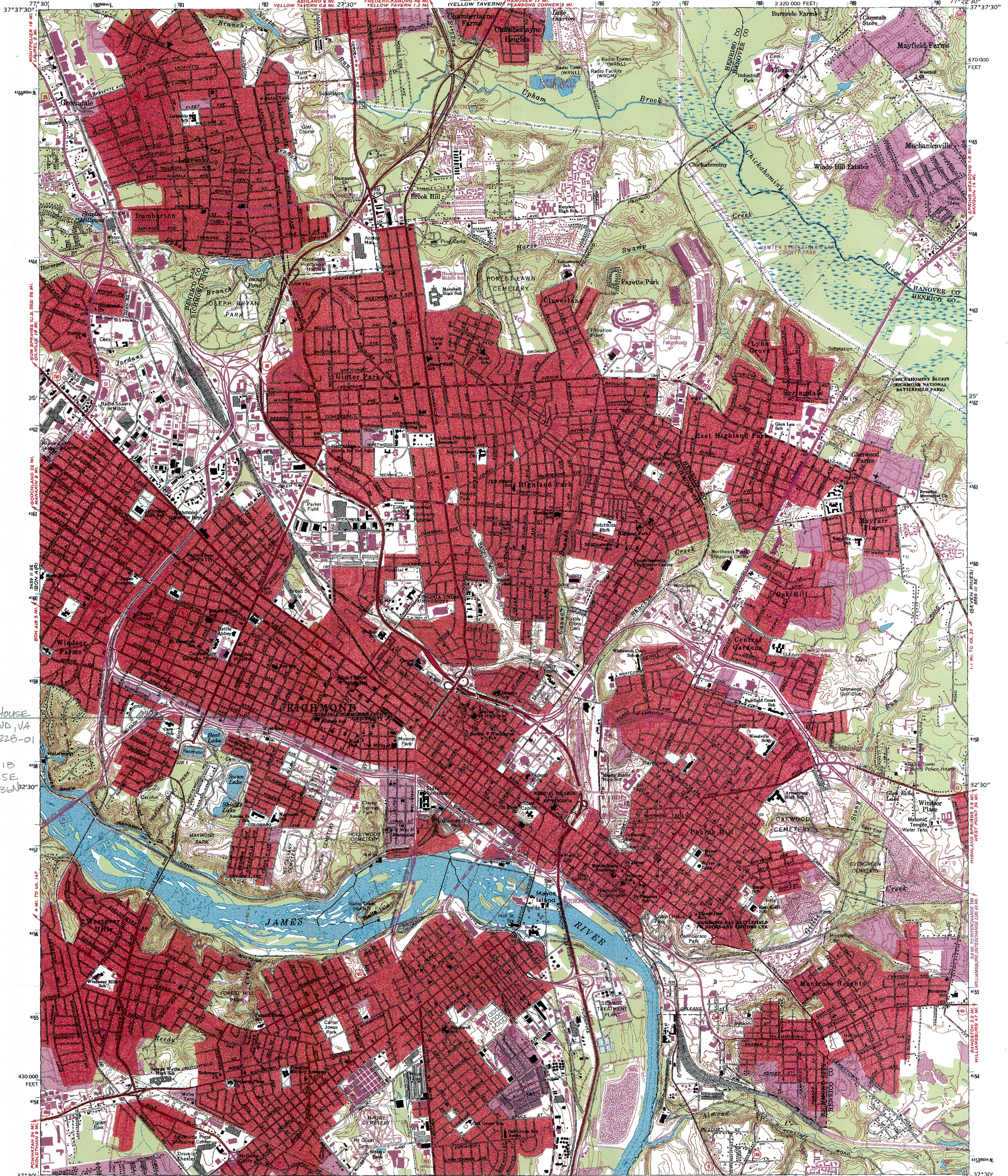


Scott House

Richmond, VA

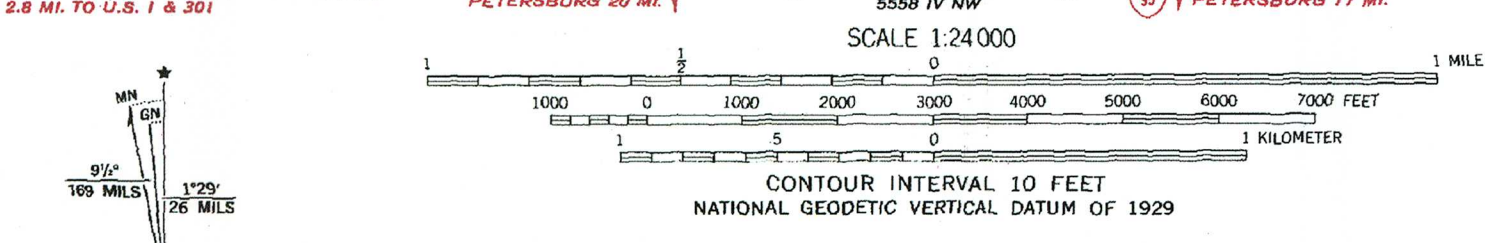
127-288-001

14/14



SCOTT HOUSE
RICHMOND, VA
#127-228-01
UTM
ZONE 18
28345E
4158536N

Produced by the United States Geological Survey
Control by USGS, NOS/NOAA, and City of Richmond
Planimetry by photogrammetric methods from aerial photographs taken 1931. Topography by planimetric surveys 1933-34. Revised 1964
Projection and 10,000-foot grid ticks: Virginia coordinate system, south zone (Lambert conformal conic)
1000-meter Universal Transverse Mercator grid ticks, zone 18, shown in blue 1927 North American Datum (NAD 27)
North American Datum of 1983 (NAD 83) is shown by dashed corner ticks
The values of the shift between NAD 27 and NAD 83 for 7.5-minute intersections are given in USGS Bulletin 1875
There may be private inholdings within the boundaries of the National or State reservations shown on this map
Red tint indicates areas in which only landmark buildings are shown



ROAD CLASSIFICATION

Heavy-duty	Light-duty
Medium-duty	Unimproved dirt
Interstate Route	U.S. Route
	State Route

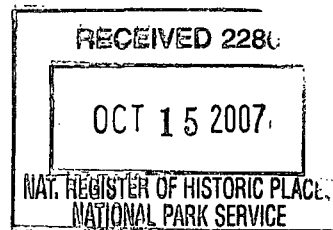
THIS MAP COMPLIES WITH NATIONAL MAP ACCURACY STANDARDS
FOR SALE BY U.S. GEOLOGICAL SURVEY, DENVER, COLORADO 80225 OR RESTON, VIRGINIA 22092,
AND VIRGINIA DIVISION OF MINERAL RESOURCES, CHARLOTTESVILLE, VIRGINIA 22903
A FOLDER DESCRIBING TOPOGRAPHIC MAPS AND SYMBOLS IS AVAILABLE ON REQUEST

Revisions shown in purple compiled in cooperation with Commonwealth of Virginia agencies from aerial photographs taken 1989 and other sources. This information not field checked. Map edited 1994
Information shown in purple may not meet USGS content standards and may conflict with previously mapped contours
Purple tint indicates extension of urban areas

RICHMOND, VA.
37077-E4-TF-024
1964
REVISED 1994
DMA 5559 11 SW - SERIES 9584



CITY OF RICHMOND
DEPARTMENT OF COMMUNITY DEVELOPMENT
COMMISSION OF ARCHITECTURAL REVIEW



May 26, 2004

Mr. Marc C. Wagner,
National Register Manager
c/o Commonwealth of Virginia,
Department of Historic Resources
2801 Kensington Avenue
Richmond, Virginia 23221

RE: Scott-Bocock House,
City of Richmond

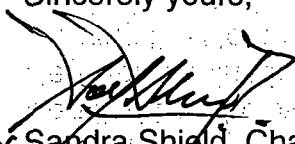
Dear Mr. Wagner;

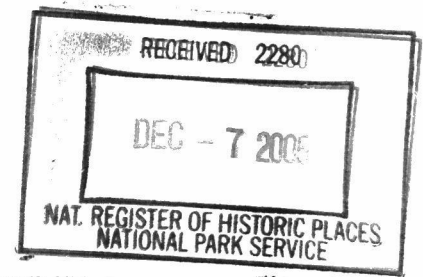
The City of Richmond's Commission of Architectural Review, as a Certified Local Government, appreciated the opportunity to review the National Register nomination report for Scott-Bocock House. At our May 25, 2004 meeting the Commission voted unanimously (8 - 0) to support and recommend the designation to the State Review Board, and the Virginia Board of Historic Resources.

However the Committee reviewing the application voiced their concern with the lack of completeness of the nomination. The Commission suggests that the grounds and carriage house be a part of the nomination and as so a detailed description of both is incorporated to the nomination. Also the Nomination sites the structure's square footage being in excess of 4000 feet, which with the known footprint, of the structure is not possible.

If you have any questions about the Commission's recommendation or if the Commission can be of further assistance, please contact Mr. Saul Gleiser D., Department of Community Development, City of Richmond, Room 510, City Hall, 900 East Broad Street, Richmond, Virginia 23219. His phone number is (804) 646-6313.

Sincerely yours,


For Sandra Shield, Chairman
Commission of Architectural Review



COMMONWEALTH of VIRGINIA

W. Tayloe Murphy, Jr.
Secretary of Natural Resources

Department of Historic Resources
2801 Kensington Avenue, Richmond, Virginia 23221

Kathleen S. Kilpatrick
Director

Tel: (804) 367-2323
Fax: (804) 367-2391
TDD: (804) 367-2386
www.dhr.virginia.gov

December 5, 2005

Ms. Jan Matthews, Associate Director
National Park Service 2280
National Register of Historic Places
1201 "I" (Eye) Street, N.W.
Washington D.C. 20005

RE: Scott House, City of Richmond

Dear Ms. Matthews:

The enclosed nomination, referenced above, is being submitted for inclusion in the National Register of Historic Places. The nomination has been considered, and approved, by the State Review Board and the SHPO has recommended it for listing.

Should you have any questions, please do not hesitate to contact me. My direct phone line is 804-367-2323 at extension 115.

Sincerely,

Marc Christian Wagner
National and State Register Manager

Enclosures

Administrative Services
10 Courthouse Avenue
Petersburg, VA 23803
Tel: (804) 863-1624
Fax: (804) 862-6196

Capital Region Office
2801 Kensington Ave.
Richmond, VA 23221
Tel: (804) 367-2323
Fax: (804) 367-2391

Tidewater Region Office
14415 Old Courthouse Way, 2nd Floor
Newport News, VA 23608
Tel: (757) 886-2807
Fax: (757) 886-2808

Roanoke Region Office
1030 Penmar Ave., SE
Roanoke, VA 24013
Tel: (540) 857-7585
Fax: (540) 857-7588

Winchester Region Office
107 N. Kent Street, Suite 203
Winchester, VA 22601
Tel: (540) 722-3427
Fax: (540) 722-7535



COMMONWEALTH of VIRGINIA

L. Preston Bryant, Jr.
Secretary of Natural Resources

Department of Historic Resources
2801 Kensington Avenue, Richmond, Virginia 23221

Kathleen S. Kilpatrick
Director

Tel: (804) 367-2323
Fax: (804) 367-2391
TDD: (804) 367-2386
www.dhr.virginia.gov

October 12, 2007



Mr. Paul Loether
Chief, National Register of Historic Places and National Historic Landmarks Programs
National Park Service 2280
National Register of Historic Places
1201 "I" (Eye) Street, N.W.
Washington D.C. 20005

RE: Scott House, City of Richmond (resubmission)

Dear Mr. Loether:

The enclosed nomination, referenced above, is being resubmitted for inclusion in the National Register of Historic Places. The nomination has been considered, and approved, by the State Review Board and the SHPO has recommended it for listing. Any letters of comment or objection have been copied at the end of the nomination material, along with the NPS return letter.

Should you have any questions, please do not hesitate to contact me. My direct phone line is 804-367-2323 at extension 102.

Sincerely,

Jean McRae, Historic Preservationist
National and State Register Program Coordinator

Enclosure

Administrative Services
10 Courthouse Avenue
Petersburg, VA 23803
Tel: (804) 863-1624
Fax: (804) 862-6196

Capital Region Office
2801 Kensington Ave.
Richmond, VA 23221
Tel: (804) 367-2323
Fax: (804) 367-2391

Tidewater Region Office
14415 Old Courthouse Way, 2nd Floor
Newport News, VA 23608
Tel: (757) 886-2807
Fax: (757) 886-2808

Roanoke Region Office
1030 Penmar Ave., SE
Roanoke, VA 24013
Tel: (540) 857-7585
Fax: (540) 857-7588

Northern Region Office
5357 Main Street
PO Box 519
Stephens City, VA 22655
Tel: (540) 868-7031
Fax: (540) 868-7033