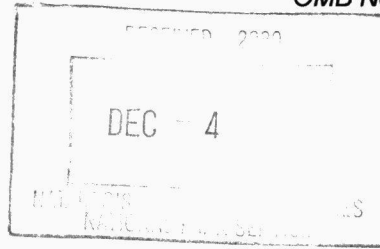


1439



**United States Department of the Interior  
National Park Service**

**National Register of Historic Places  
Registration Form**

This form is for use in nominating or requesting determinations of eligibility for individual properties or districts. See instructions in *How to Complete the National Register of Historic Places Registration Form* (National Register Bulletin 16A.) Complete each item by marking "x" in the appropriate box or by entering the requested information. If an item does not apply to the property being documented, enter "N/A" for "not applicable" For functions, architectural classification, materials and areas of significance, enter only the categories and subcategories from the instructions. Place additional entries and narrative items on continuation sheets (NPS Form 10-900a) Use a typewriter, word processor or computer to complete all items.

**1. Name of Property**

historic name: Millboro School  
other names/site number: Millboro Elementary School, Millboro High School, Bath County High School  
VDHR File No.# 008-5024

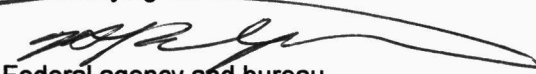
**2. Location**

street & number: Corner of State Route 668 (High St.) and State Route 633 (Main St.)  
city, town: Millboro  
state: Virginia code: VA county: Bath code: 017  
N/A not for publication vicinity zip code: 24460

**3. State/Federal Agency Certification**

As the designated authority under the National Historic Preservation Act, as amended, I hereby certify that this  nomination  request for determination of eligibility meets the documentation standards for registering properties in the National Register of Historic Places and meets the procedural and professional requirements set forth in 36 CFR Part 60. In my opinion, the property  meets  does not meet the National Register criteria. I recommend that this property be considered significant  nationally  statewide  locally ( See continuation sheet for additional comments).

Signature of certifying official \_\_\_\_\_ Date \_\_\_\_\_



State or Federal agency and bureau

6 Nov 2003

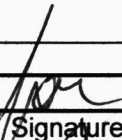
In my opinion, the property  meets  does not meet the National Register criteria. ( See continuation sheet for additional comments.)

Signature of commenting or other official \_\_\_\_\_ Date \_\_\_\_\_

State or Federal agency and bureau

**4. National Park Service Certification**

I, hereby, certify that this property is:  
 entered in the National Register.  
 See continuation sheet.  
 determined eligible for the National Register.  See continuation sheet  
 determined not eligible for the National Register.  
 removed from the National Register.  
 other, (explain:)

  
Signature of the Keeper

Date



1/16/04

Name of Property **Millboro School**

County and State **Bath County, VA**

**5. Classification**

<b>Ownership of Property</b> (Check as many boxes as apply) resources in the count.)	<b>Category of Property</b> (Check only one box)
private	building(s) <input type="checkbox"/> x
public-local <input checked="" type="checkbox"/> x	district
public-State	site
public-Federal	structure
	object

**Number of Resources within Property**  
(Do not include previously listed)

Contributing	Non contributing	
3	5	buildings
		sites
	1	structures
		objects
Total 3	6	

**Name of related multiple property listing**  
N/A  
(Enter N/A if property is not part of a multiple property listing.)

**Number of contributing resources previously listed in the National Register** N/A

**6. Function or Use**

**Historic Functions**  
(Enter categories from instructions)  
EDUCATION/school

**Current Functions**  
(Enter categories from instructions.)  
VACANT/NOT IN USE

**7. Description**

**Architectural Classification**  
(Enter categories from instructions)  
Colonial Revival

**Materials**  
(Enter categories from instructions)  
foundation CONCRETE  
walls BRICK  
roof METAL  
other WOOD

**Narrative Description**

(Describe the historic and current condition of the property on one or more continuation sheets.)

  X   See continuation sheet

**United States Department of the Interior  
National Park Service**

**National Register of Historic Places  
Continuation Sheet**

**Millboro School  
Bath County, VA**

**Section number 7. Page 1**

---

**Summary Description**

The former Millboro School is a classically based schoolhouse design that was used widely in Virginia in the early twentieth century. The complex was built in three phases. The original two-story brick school building dates from 1916; a separate similar classroom structure with a gymnasium/auditorium wing was constructed to the east of the original building in 1933; and in 1962 a one-story building was built between the two existing structures. The complex is largely vacant and parts of the original building have suffered from water damage since the school's closing in 1989.

The 6.7-acre site of the school complex is located at the corner of State Route 668 (Church St.) and State Route 633 at the edge of the village of Millboro in Bath County. The site is relatively flat and open with several large evergreen and deciduous trees scattered throughout the front lawn. The property contains several additional structures. A brick, 1 1/2-story, home economics cottage was constructed in 1933 west of the original school. Three years later a larger one-story brick agricultural instruction building was put up behind the home economics cottage. In 1944 a one-story cannery was built on the site behind the other outbuildings and later a garage structure was placed nearby. Both of the buildings have been demolished. Two small structures relating to school bus operations remain on the site: a small brick records shed (nc) and a concrete block storage shed (nc). In the 1970s and 1980s two prefabricated structures were brought to the site to serve as additional classroom space. They are located on either side of the main complex: a modular structure (nc) to the west currently housing a medical clinic and a music trailer (nc) on the east side of the site. A community swimming pool (nc) and pool house (nc) were erected within the site behind the old school in 1998.

**Detailed Description**

**1916 Original Building Exterior**

The original school building, constructed in 1916 and opened in 1918, was a typical state design of the early twentieth century when the Virginia State Board of Education was encouraging the upgrading and expansion of educational opportunities, particularly in rural areas. The simple and orderly design reflects the popularity of the neo-classical revival of that period. The two-story brick rectangular structure with five-course common bond rests on a raised concrete foundation. It has a standing-seam metal hip roof dominated by two tall central chimneys and a central hip dormer. The dormer's design has a Palladian motif with its arch and sidelights. The simple three-part classical cornice is capped with a deep overhang of the roof eave.

The symmetrical façade contains a central arched opening capped by a similar window element above. Sets of three separate tall six-over-six windows are located on each side of the central entry on both levels. The first floor windows have segmental arches while the second level openings are flat and have a hidden lintel. The square basement openings contain six-light casement windows. Access is gained to the school up a set of tapered concrete steps to the main entry consisting of a semi-circular arched fanlight capping a pair of nine-light paneled doors.

The west side elevation has similarly arranged windows as the façade except that there is a small semi-circular arched window on each level in the middle of the wall to light cloakrooms. One of the classroom windows at the northwest corner has been converted into a door for an added exterior metal fire escape. A small one-story addition has been added at the ground level below the fire escape and contained wash rooms for the cafeteria staff and entry to the kitchen. The east elevation is similar to the west except that the second floor central opening has been bricked up and the first floor arched opening has been adapted to connect to the later central addition.

**United States Department of the Interior  
National Park Service**

**National Register of Historic Places  
Continuation Sheet**

**Millboro School  
Bath County, VA**

**Section number 7. Page 2**

---

**Description (continued)**

The rear facade is very similar to the front of the building except that the second floor central opening has been bricked up. Also, the first floor arched entry has been partially enclosed to house a revised entry and connector to the gymnasium of the 1933 section and to the 1962 central addition.

**1916 Original Building Interior**

The floor plan of the original school building is a center-hall plan flanked by a pair of open stairs leading to the second floor. There is a storage closet under each of these stairs. These stairs are open and have simple rectangular balusters, a plain railing and a fluted newel post. At the rear of the main hall there is a half flight of stairs leading to a central landing and rear exit. A pair of flanking stairs on each side of the landing leads to the basement. The first and second levels each contain four classrooms, one in each corner of the building. The two rear classrooms on the second floor have a movable partition between them. Cloakrooms divide each bank of classrooms and on the second floor they provide a direct connection between the two large spaces. Small, semi-circular arched windows light these cloakrooms. A partial height partition has been added at some time to the front area of the second floor hall to create a semi-private space.

The interior of the school retains many original features although moisture penetration has caused considerable damage to plaster ceilings and basement tile floors. Woodwork is typical of the period: flat board trim, three-panel and five-panel doors with flat board caps, simple tall baseboard, beaded tongue-and-groove wainscoting, and narrow tongue-and-groove pine floors. The painted upper panels of many three-panel classroom doors most likely originally contained some type of glass panel. Many schoolroom features such as doorway transoms, bulletin boards, chalkboards, storage cabinets and cloakroom hardware remain in the various spaces. Pendant florescent light fixtures remain in most of the spaces and most likely replaced earlier globe examples.

The basement contains a lunchroom on the west side and a large kitchen area on the east. There is a cloakroom space at the base of the rear stair entry area and a dishwashing room located at the front of the basement between the lunchroom and kitchen. Additional storage spaces and restrooms are located off of the kitchen. This floor was completely remodeled in 1962 and Wm. P. Swartz, Jr. & Co., Inc. of Roanoke was the equipment provider according to records found in the former school offices.

**1933 Building Exterior**

In 1933 a new classroom structure with a gymnasium/auditorium wing was erected east of the existing school. Like the original building, the new design is a two-story, brick, hip-roofed structure with a plain cornice and deep soffit. The brick pattern is five-course common bond with darker headers used as decorative courses in several locations. The building's symmetrical facade has three bays with a projecting central entry bay. It contains a semi-circular arched entrance that is recessed and flanked with bands of classroom windows. Access is gained from a short flight of concrete steps that are flanked by a pair of stone-veneered low piers whose height corresponds to the raised concrete foundation and water table.

**United States Department of the Interior  
National Park Service**

**National Register of Historic Places  
Continuation Sheet**

**Millboro School  
Bath County, VA**

**Section number 7. Page 3**

---

**Description (continued)**

The entry is surrounded by cast stone trim with a keystone at the top of the arch that is filled in with a pattern of rows of brick headers. Each of the pair of paneled entry doors has nine lights within it and is capped with a ten-light transom. A pair of wood, six-over-six, double-hung sash windows are located directly above the arched entry. On either side of the central bay at both levels are rows of five wood, six-over-six, double-hung sash windows set within a single masonry opening. The hip roof is clad with standing-seam metal and has snowbirds attached to the seams. The side elevations have fifteen-light, metal, casement windows that are defined by dark brick header surrounds as is a blank panel at the second level.

A flat-roofed, large, one-story, rear ell resting on a raised concrete foundation contains the gymnasium/auditorium. Its east elevation has five bays of large semi-circular arched metal casement windows with concrete sills. They are separated by exterior protruding brick piers with concrete caps and bases. The arched openings are defined by three rows of contrasting dark brick header surrounds. A tall brick chimney servicing a basement furnace protrudes from the northeast corner of the ell. Two rear frame exterior stairs provide access to each side of the stage area of the auditorium.

It appears that a one-story connector was made between the two existing structures before the third section was erected. This flat-roofed connector extends behind the original school to enclose the rear entry of that building and ties directly into the side of the gymnasium to the east. It is constructed with red bricks to tie into the existing buildings and has a five-bay facade divided by brick piers. Square proportioned six-over-three double-hung sash windows are placed between the piers except for the central entry. It consists of a pair of paneled doors with nine lights in the upper half of each door. A row of soldier-course brick creates a lintel over each window and the entry. Above the entry soldier course is a rectangular panel consisting of rows of dark brick headers.

**1933 Building Interior**

The interior, like the original school, retains much of its original fabric but is in better condition than the old school. The center hall with a concrete floor leads directly back to a pair of double plain doors that open into the gymnasium. A classroom flanks the front west side of the center hall and a former library is located on the east side. Between these front spaces and the gymnasium wing is a transverse hall that leads to restrooms on each side of the building and also contains the staircase. This element has one-piece soapstone treads and risers and solid painted metal panels in place of balusters. Beige glazed brick-like tiles create a wainscot in the central hall and staircase and it continues throughout the second floor hall.

The second floor contains two large corner classrooms separated by a smaller central classroom across the front of the building. A teachers' lounge is located behind the east classroom at the end of the transverse hall opposite the staircase. The front classroom on the west side has an additional internal room in the northwest corner of the second floor.

The classrooms retain many of their original features such as built-in cabinets, cloakroom areas, and chalkboards. Woodwork is simple and consists of single-paneled classroom doors many with six-light glass upper panels and six-light transoms. Trim is for the most part flat board, with tongue-and-groove paneling inside cloak areas and cabinets. Baseboards are large and flat.

**United States Department of the Interior  
National Park Service**

**National Register of Historic Places  
Continuation Sheet**

**Millboro School  
Bath County, VA**

**Section number 7. Page 4**

---

**Description (continued)**

The gymnasium/auditorium space has twelve, exposed, painted metal, ceiling trusses supporting the flat board ceiling and roof and resting on painted brick walls. A raised stage at the north end of the gym creates the dual use of the space. Doors and stairs on each side of the stage provide access to it and to exterior exits. Basketball goals are suspended from the ceiling and the maple tongue-and-groove floors have painted stripes to designate the basketball court.

**1962 Building Addition Exterior**

The 1962 flat-roofed, one-story addition was placed behind the connector of the two original structures and extended behind the original 1916 building. Its east side ties into the west side of the gymnasium. The unadorned exterior is constructed with running bond brick masonry. It appears that a large bank of original windows on the west elevation was filled in with composition flat board siding and several one-over-one double-hung sash window units. This third section of the complex was designed by the Lynchburg architectural and engineering firm of Hinnant, Addison and Hinnant and built by the Staunton contractor, J. B. Wine & Sons.

**1962 Building Addition Exterior**

This new one-story wing has an internal north/south ramped corridor that links to the existing connector between the two buildings. This internal corridor leads to the rear of the property and provides an entry off of the parking area. The addition contains the school offices, storage and book rooms, additional classrooms, and restrooms. Also girls' and boys' locker rooms are located within this wing off of the gymnasium and banks of lockers remain along the walls of the corridors. The interior of this third section has minimal detailing and walls are mostly plaster or drywall. Doors are flush and constructed of maple and doorframes are metal with no trim. Floors are concrete or vinyl tiles. It appears that original bands of classroom windows along the west exterior walls have been filled in later with areas of wood siding and several smaller double sash windows. Skylights illuminate the hall and office in this section. A Diebold walk-in vault is located off of the office that still retains its counter and teacher mailboxes. A 1983 report found on the office counter states that the ceiling in this space has a thirty-eight percent amount of asbestos within the finish coat of plaster. Lighting in this addition is surface-mounted florescent units.

**Outbuildings: Home Economics Cottage (Contributing)**

The school property contains several additional contributing structures that relate to the educational nature of the site. A brick home economics cottage was constructed on a concrete foundation in 1933 directly west of the original school. This 1 and 1/2-story, long rectangular structure has a metal standing-seam gable roof with cornice returns. Small brick flues penetrate the roof at the middle of the building and over the rear entry. The end gable facade has a central entry door flanked by windows and capped by a pair of windows above. The front door consists of three vertical lights over three vertical wood panels. The rear door has five vertical panels. Windows are three-over-one, and three-over-six double-hung sash. The lintels of all openings are a soldier course of bricks that creates a flat jack arch and the sills are concrete. The building is currently vacant and used for miscellaneous storage.

**Outbuildings: Agricultural Instruction Building (Contributing)**

A larger one-story brick building was put up behind the home economics cottage in 1936. This structure's original use was for agricultural instruction. It is a long rectangular building with a central brick chimney rising from its standing-seam metal roof. Wood brackets support the deep overhang at each gable end. Along the four-bay front elevation are two shallow roof gables containing circular vents. A small, bracketed, metal roof

**8. Statement of Significance****Applicable National Register Criteria**

(Mark "x" in one or more boxes for the criteria qualifying the property for National Register listing.)

 **A** Property is associated with events that have made a significant contribution to the broad patterns of our history **B** Property is associated with the lives of persons significant in our past. **C** Property embodies the distinctive characteristics of a type, period, or method of construction or represents the work of a master, or possesses high artistic value, or represents a significant and distinguishable entity whose components lack individual distinction **D** Property has yielded, or is likely to yield information important in prehistory or history**Areas of Significance**

(Enter categories from instructions)

EDUCATION

ARCHITECTURE

**Period of Significance**

1916-1953

**Criteria Consideration**

(Mark "x" in all the boxes that apply)

Property is:

 **A** owned by a religious institution or used for religious purposes **B** removed from its original location **C** a birthplace or grave **D** a cemetery **E** a reconstructed building, object, or structure **F** a commemorative property **G** less than 50 years of age or achieved significance within the past 50 years**Significant Dates**

1916, 1918, 1933, 1936

**Significant Person**

(Complete if Criterion B is marked above)

**Cultural Affiliation**

N/A

**Architect/Builder**Virginia State Board of Education (original)  
Hinnant, Addison, & Hinnant (1962 addition)**Narrative Statement of Significance**

(Explain the significance of the property on one or more continuation sheets.)

**9. Major Bibliographical References** See continuation sheet**Bibliography**

(Cite the books, articles, and other sources used in preparing this form on one or more continuation sheets.)

**Previous documentation of file (NPS):** preliminary determination of individual listing (36 CFR 67) has been requested previously listed in the National Register previously determined eligible by the National Register designated a National Historic Landmark recorded by Historic American Buildings Survey # recorded by Historic American Engineering Record #**Primary location of additional data:** State historic preservation office Other State agency Federal agency Local government University Other

Specify repository: Virginia Department of Historic Resources, 2801 Kensington Ave., Richmond, VA, 23221

**United States Department of the Interior  
National Park Service**

**National Register of Historic Places  
Continuation Sheet**

**Millboro School  
Bath County, VA**

**Section number 7, 8 Page 5**

---

**Description (continued)**

entry gable protects the replacement door that is paneled and contains a semi-circular arched window. The foundation is concrete as are the water table and windowsills. Windows are single or paired nine-over-nine double-hung wood sash. The running brick bond has decorative details in each gable end including two rows of dark headers over each of three pairs of windows and stepped recessed brickwork with a central semi-circular arched vent. The north end elevation has an additional entry with a replacement door and pressure treated lumber steps. There is a handicapped ramp at the main entry. The local Ruritan Club currently uses the building.

**Outbuildings (Noncontributing): Fuel Records Shed & Storage Shed**

A brick, hip-roofed, fuel records structure was erected north of the shop building for school bus drivers to keep track of their vehicle's fuel usage. This very small shed probably dates from the mid-twentieth century. A small, painted concrete block, storage shed is located east of the fuel records shed and was used for bus maintenance items.

**Outbuildings (Noncontributing): Two Mobile Structures**

In the 1970s a prefabricated mobile structure was brought to the east side of the site next to the 1933 addition to serve as music classroom space. In 1987 a modular structure was placed directly south of the old shop building and served as a first grade classroom. It currently houses a local medical clinic.

**Outbuildings/Structures (Noncontributing): Pool House and Swimming Pool**

In 1998 a community swimming pool and concrete block pool house were constructed between the school complex and

**Additional Site Features and Information:**

A softball/soccer field is located behind the school between the swimming pool complex and the northern boundary tree line. An asphalt basketball court remains north of the former music trailer but the goals have been removed. New playground equipment has been installed next to this area for local residents' use. Vehicular entry is to the rear of the site from the southwest off of Church Street and the major parking area is located between the 1936 building and the main school complex. Several concrete walks connect the various parts of the property. In 1944 a one-story cannery was built on the site behind the other outbuildings and later a garage structure was placed nearby. Both of the buildings have been demolished.

**8. Statement of Significance**

The small village of Millboro is located in the eastern part of Bath County, a rural and mountainous county in the western part of the state. The Millboro School was constructed in 1916 and replaced an earlier log structure. This large, two-story, hip-roofed, brick building represented a new educational era in Virginia when the state created architectural plans and provided financial assistance in guaranteeing the bonds for the project. The school's simple form reflects the growing popularity of using classical designs for public buildings in the early twentieth century. Throughout much of the twentieth century the school facilities were expanded and additional structures were added to the site. In 1933, a new building was constructed on the site and contained classrooms for elementary students and a gymnasium/auditorium wing. This new structure was similar in size and form to the original school and in the same year a smaller brick home economics building was erected on the site as well. Three years later an agricultural building

United States Department of the Interior  
National Park Service

National Register of Historic Places  
Continuation Sheet  
Section number 8 Page 6

Millboro School  
Bath County, VA

**Statement of Significance (continued)**

housing a shop and classrooms was added. In 1962, a third structure was erected behind and connected to the two earlier buildings. This one-story rear wing housed school offices, a new library room, science lab, physical education locker rooms, and new restrooms. This entire complex continually grew and evolved to meet the educational needs of area residents from 1916 until the site was closed in 1989 at which time new facilities were constructed to replace the aging buildings.

The school meets Criterion C in the area of architecture as a surviving example of an early state-assisted education building in Virginia. The school also meets Criterion A for its significance in education reflecting the state's growing commitment to educate all its residents.

**Historical Background**

For most, if not all, of the twentieth century, the Bath County community of Millboro has had a school. The first documented school in this railroad village was a one-room log structure in existence prior to 1915.<sup>i</sup> That structure had been converted to a school from its original use as the tackshop for the Millboro Livery Stable. Upon its conversion from tackshop to school, it was moved across the road. Once that log school was replaced in 1916, it was converted again, this time into a home. Eventually it was framed out so that the one-room log portion was at the center of the larger house.<sup>ii</sup>

In 1916, a modern two-story (with a basement) brick structure was built based on plans provided by the Virginia State Board of Education. Unfortunately those original plans no longer exist, but the construction cost of \$10,000 (equal to \$168,187 in 2001) was located on a later school site inventory chart.<sup>iii</sup> The school reflected a statewide push by Virginia toward upgrading, enlarging, and modernizing public educational facilities, particularly in more remote regions like Bath County. The move from a single-room log school to a beautiful new brick building must have brought a great deal of pride to the village of Millboro. Certainly the school became the focal point of many community activities in addition to the normal educational use.

The school contained grades one through eleven, all that was required in Virginia at the time.<sup>iv</sup> The principal when the school opened was E.R. Dobbins who served from 1916 to 1918. Two years after it opened, the school was accredited, in 1918. Serving as principal from 1918 to 1919 was Daniel B. Smith. Fontaine Fortune was principal from 1919 to 1920 and E.R. Riedel was head of the school from 1920 to 1924. From 1924 to 1926 Mrs. Susie Dunn was principal, followed by Theodore R. Sinclair from 1926 to 1927 and S.P. Bennington from 1927 to 1928. A.C. Hankla followed from 1928 to 1929, then K.D. Browning from 1929 to 1930, and Carroll Catterton from 1930 to 1931.<sup>v</sup>

In 1931, C.E. May came to Millboro as principal and remained for a decade. He led the thriving school into an era of expansion. In 1933, the *Bath County Enterprise* noted that the "new building at Millboro School (was) completed December 1, 1933."<sup>vi</sup> That two-story brick structure, which was very similar in appearance to the original building, cost \$25,000 (about \$312,000 in 2001).<sup>vii</sup> The student capacity of the addition was 106 (or four classrooms) as compared to the 211-student capacity of the 1916 building, but it also contained an auditorium and gymnasium.<sup>viii</sup> The additional classroom space in the new addition was for primary grades. A breezeway was immediately built to connect the two parts of the school. Also in 1933, a story-and-a-half brick Home Economics Cottage was constructed on the 22.5-acre site. The cottage was located beside the original school building. After the school became an elementary school in 1970, the home economics building was used to house special education classes.<sup>ix</sup> Although statistics on the school

**United States Department of the Interior  
National Park Service**

**National Register of Historic Places  
Continuation Sheet  
Section number 8 Page 7**

**Millboro School  
Bath County, VA**

**Historical Background (continued):**

population are scarce for this period, there were 307 students and 11 teachers during the 1934-1935 school year. At the conclusion of that year, 16 students graduated.<sup>x</sup>

In 1936 a \$3,000 one-story agricultural building that included a shop and classroom space was built on the site, northwest behind the original cluster of buildings and close to Church Street. After the consolidation of Bath County high schools in 1970, that building was used for art classes. Both the home economics cottage and the agriculture building were undoubtedly the result of the state and federal push during this period for the inclusion of vocational training in rural areas and the use of public schools as the venue for extension work in farming communities. The effects of the Smith Hughes Act or the National Vocational Education Act of 1917 began to be felt on the secondary level in Virginia in the late 1920s and early 1930s. As home economics and agriculture teachers graduated from Virginia Polytechnic Institute, many accepted jobs in the rural high schools where they mentored to students and farm families from those communities. To that same end, a one-story community cannery was constructed at the back of the school complex in 1944 at a cost of \$4,000. The construction was completed despite the fact that the country was at war and is indicative of how completely intertwined the community and the school were. Sometime before 1961, a garage was also built between the agriculture building and the cannery.<sup>x1</sup> Both the cannery and garage no longer exist.

In 1961, the Virginia Department of Education contracted with the architectural firm of Hinnant, Addison & Hinnant to design an addition and alterations to the school. The addition connected the two older buildings from the back. The one-story addition was completed in 1962 by J. B. Wine & Sons of Staunton at a cost of \$120,000. It housed grades 8-12, a library, science lab, guidance office, and administrative offices. From that point until 1970, the original 1916 building housed students in grades 5 through 12, the 1933 building had students in grades 1 through 4, and the new addition was for students in grades 8-12.<sup>x11</sup> The basement was completely remodeled at this time and Wm. P. Swartz, Jr. & Co., Inc. of Roanoke was the equipment provider according to records found in the former school offices.

The Millboro School principals during the three decades from C.E. May until the consolidation of Bath County high schools in 1970 were: E.W. Miller (1941-1943), George M. Hodge (1943-1945), R. Lynn Graham (1945-1948), George Bagby (1948-1951), Grant Rush (1951-1953), Fred K. Knoblock (1953-1956), John B. Farrar (1956-1959), Ernest R. Worrell (1959-1960), Thomas M. Capley (1960-1967), and Richard B. Linkenhoker (1967-1974).<sup>x111</sup>

The year 1970 marked an important change in Millboro School. The Virginia Department of Education was encouraging the consolidation of small high schools into larger, more modern facilities. In 1970 Millboro and Valley High School merged to become Bath County High School in Warm Springs. Millboro School became Millboro Elementary and continued to operate until 1989. With the departure of the high school students, the 1916 building was used for grades 4 through 7 and also contained the cafeteria. The 1933 building housed the 1<sup>st</sup> through 3<sup>rd</sup> grades and the library. In addition, students from the Bath County High School industrial arts class built a small pre-fabricated building south of the agricultural building to house the overflow of first grade students. The old breezeway built to connect the first two brick buildings was enclosed and used for kindergarten classes.<sup>x1v</sup> According to plans recently found in the former school offices, a library addition for the school was designed by the Charlottesville architectural firm of Johnson, Craven & Gibson in 1980. It was slated to be a two-story brick wing to the east of the 1933 building but it was not constructed.

United States Department of the Interior  
National Park Service

National Register of Historic Places  
Continuation Sheet

Millboro School  
Bath County, VA

Section number 8 Page 8

---

**Historical Background (continued):**

In addition, drawings of proposed modifications to the original school building also were found in the former offices by the Charlottesville architectural firm of Landow and deBettencourt. They were retained in 1983 to make modifications to entrances, the basement, and interior staircases but it appears that the work also was not carried out.

By the late 1980s, the aging Millboro School complex had probably outlived its usefulness as a public school. A report was prepared to assess the feasibility of renovating the old school, which had hazardous materials and age issues, versus building a new facility. The decision was made to close the doors of the old school and construct a new one.<sup>xv</sup> A 58-acre site was purchased from Stillwater Mills for \$58,000 and a new school, designed by the Washington Design Group in Richmond and built by Frazier Construction in Lynchburg, was constructed there. The school was opened after Thanksgiving in 1989 and formally dedicated in April of 1990. The current principal, John M. Jenkins has led the school since 1975 and participated in the move to the new facility. He was preceded by Michael Westfall.<sup>xvi</sup>

For most of the twentieth century, Millboro School served as a community centerpiece. Not only had hundreds of children and future community leaders received a quality education there, but also the school through its outbuildings and community programs had provided a vital agricultural extension service to the area. Finally, the presence of a modern facility such as Millboro School in the village made a statement. It said that, while Millboro might be described as remote, it could never be described as backward.

---

<sup>i</sup> A graduation announcement exists for 1915, but Millboro School must have been in existence for several years prior to that one surviving document.

<sup>ii</sup> Notebook on Bath County schools at the Bath County Historical Society.

<sup>iii</sup> Commonwealth of Virginia State Board of Education, School Plant Inventory, Bath County, 12 July 1963 and the Inflation Calculator, [www.westegg.com/inflation/infl.cgi](http://www.westegg.com/inflation/infl.cgi).

<sup>iv</sup> History of Millboro School compiled by the 7<sup>th</sup> grade class of Millboro in 1989.

<sup>v</sup> *Bicentennial History of Bath County, Virginia*. 1991, (Published by Bath County Historical Society, 1991), 59-60.

<sup>vi</sup> *Bicentennial History of Bath County, Virginia* and historical society notebook on schools.

<sup>vii</sup> The Inflation Calculator.

<sup>viii</sup> School Plant Inventory.

<sup>ix</sup> School Plant Inventory and historical society notebook on schools.

<sup>x</sup> Historical society notebook on schools.

<sup>xi</sup> School Plant Inventory, historical society notebook on schools, and site plans for the Millboro School addition 1961.

<sup>xii</sup> School Plant Inventory and site plans for the Millboro School addition 1961.

<sup>xiii</sup> *Bicentennial History of Bath County, Virginia*.

<sup>xiv</sup> Historical society notebook on schools.

<sup>xv</sup> Telephone conversation with Millboro Elementary School principal John Jenkins, September 2002.

<sup>xvi</sup> *Bicentennial History of Bath County, Virginia*.

**United States Department of the Interior**  
National Park Service

**National Register of Historic Places**  
**Continuation Sheet**  
**Section number 9 Page 9**

---

**Millboro School**  
**Bath County, VA**

**Major Bibliographical References**

Bicentennial History of Bath County, Virginia: Bath County Historical Society, 1991.

Commonwealth of Virginia State Board of Education, "School Plant Inventory, Bath County, 12 July 1963".

Unpublished Notebook on Bath County schools at the Bath County Historical Society, Warm Springs, VA.

"History of Millboro School" compiled by the 7<sup>th</sup> grade class of Millboro in 1989.

Unpublished brochure, Millboro High School Class Reunion: Classes of 1916-1970, July 6, 2002.

Site plans for the Millboro School Addition, Hinnant, Addison & Hinnant, Architects and Engineers, Lynchburg, VA 1961.

Library wing architectural plans for Millboro School, Johnson, Craven & Gibson, Architects, Charlottesville, VA 1980.

Alterations to Millboro School, Landow and deBettencourt, Architects, Charlottesville, VA 1983.

Telephone conversation by Nancy Sorrells with Millboro Elementary School principal John Jenkins, September 2002.

**10. Geographical Data**

Acreage of property: 6.7

**UTM References**

(Place additional UTM references on a continuation sheet.)

17/622660/4204140

 See continuation sheet**Verbal Boundary Description**

(Describe the boundaries of the property on a continuation sheet.)

 See continuation sheet**Boundary Justification**

(Explain why the boundaries were selected on a continuation sheet.)

 See continuation sheet**11. Form Prepared By**

name/title	William T. Frazier/Cleary Larkin,/Nancy Sorrells	date	2/11/03
organization	Frazier Associates	telephone	(540) 886-6230
street and number	213 N. Augusta Street	state	VA
city or town	Staunton	zip code	24401

**Additional Information****Submit the following items with the completed form:****Continuation Sheets****Maps**

A USGS map (7.5 or 15 minute series) indicating the property's location

A Sketch map for historic districts and properties having large acreage or numerous resources.

**Photographs**

Representative black and white photographs of the property.

**Additional Items**

(Check with the SHPO or FPO for any additional items.)

**Property Owner**

(Complete this item at the request of SHPO or FPO.)

name	Bath County Board of Supervisors	telephone	540-839-7221
street and number	P. O. Box 309	state	VA
city or town	Warm Springs	zip code	24484

**Paperwork Reduction Act Statement:** This information is being collected for applications to the National Register of Historic Places to nominate properties for listing or determine eligibility for listing, to list properties, and to amend existing listings. Response to this request is required to obtain a benefit in accordance with the National Preservation Act as amended. (16 U.S.C. 470 et. seq.).

**Estimated Burden Statement:** Public reporting burden for this information is estimated to average 18.1 hours per response including the time for reviewing instructions, gathering and manufacturing data, and completing and reviewing the form. Direct comments regarding this burden estimate or any aspect of this form to the Chief, Administrative Services Division, National Park Service, P.O. Box 37127, Washington, D.C. 20013-7127; and the Office of Management And Budget, Paperwork Reductions Projects (1024-0018), Washington, D.C. 20503.

**United States Department of the Interior**  
National Park Service

**National Register of Historic Places**  
**Continuation Sheet**  
**Section number 10 Page 10**

---

**Millboro School**  
**Bath County, VA**

**Geographical Data**

**Verbal Boundary Description**

The boundary of the Millboro School property is shown as the dotted line on the accompanying plan entitled "Site Plan, Millboro School by Hinnant, Addison & Hinnant Architects and Engineers, Lynchburg, VA, 7/13/60".

**Boundary Justification**

The boundary is the traditional boundary associated with the school property. The south and east side boundaries are streets (High and Main streets) while the north boundary is a line of trees at the edge of the property with woods beyond. The west boundary is formed by the edge of the woods connecting close to the beginning of Church Street that extends south to its intersection with High Street.

**United States Department of the Interior  
National Park Service**

**National Register of Historic Places  
Continuation Sheet**

**Millboro School  
Bath County, VA**

**Section Photographs Page 11**

---

All photographs are of:  
Millboro School  
Millboro, Bath County, VA  
DHL FILE # 008-5024  
NEG. NO.: 20332, 20333  
CREDIT: William T. Frazier  
DATE: January 2003

NEGATIVES FILED: VA Dept. of Historic Resources, Richmond, VA

1. VIEW OF: south front and west side elevation of original school and façade of 1933 Addition; view looking east  
PHOTO 1 of 13 (roll # 20333 – negative # 4)
2. VIEW OF: south front elevation of original school and lawn; view looking north  
PHOTO 2 of 13 (roll # 20333 – negative # 5)
3. VIEW OF: south front elevation of 1933 addition and lawn; view looking north  
PHOTO 3 of 13 (roll # 20333 – negative # 6)
4. VIEW OF: south front elevation of connector looking north  
PHOTO 4 of 13 (roll # 20333 – negative # 7)
5. VIEW OF: south front and east side elevation of home economics cottage looking northwest  
PHOTO 5 of 13 (roll # 20333 – negative # 9)
6. VIEW OF: east front elevation of agricultural instruction building looking west  
PHOTO 6 of 13 (roll # 20333 – negative # 10)
7. VIEW OF: east side elevation of auditorium wing and rear of 1933 building looking southwest  
PHOTO 7 of 13 (roll # 20333 – negative # 19)
8. VIEW OF: north rear elevation of original school; view looking south  
PHOTO 8 of 13 (roll # 20333 – negative # 23)

**United States Department of the Interior  
National Park Service**

**National Register of Historic Places  
Continuation Sheet**

**Millboro School  
Bath County, VA**

Section Photographs Page 12

Photographs Continued

9. VIEW OF: west side elevation of 1962 rear addition; view looking east  
PHOTO 9 of 13 (roll # 20333 – negative # 24)
10. VIEW OF: interior front hall and staircase of original school; view looking north  
PHOTO 10 of 13 (roll # 20332 – negative # 3)
11. VIEW OF: interior of classroom, northwest corner second floor of original school;  
view looking southwest  
PHOTO 11 of 13 (roll # 20332 – negative # 4 )
12. VIEW OF: interior of gymnasium/auditorium wing in 1933 building; view looking  
northeast  
PHOTO 12 of 13 (roll # 20332 – negative # 12)
13. VIEW OF: interior of main staircase of 1933 building; view looking west  
PHOTO 13 of 13 (roll # 20332 – negative # 15)

UNITED STATES DEPARTMENT OF THE INTERIOR  
NATIONAL PARK SERVICE

NATIONAL REGISTER OF HISTORIC PLACES  
EVALUATION/RETURN SHEET

REQUESTED ACTION: NOMINATION

PROPERTY Millboro School  
NAME:

MULTIPLE  
NAME:

STATE & COUNTY: VIRGINIA, Bath

DATE RECEIVED: 12/04/03      DATE OF PENDING LIST: 12/16/03  
DATE OF 16TH DAY: 1/01/04      DATE OF 45TH DAY: 1/17/04  
DATE OF WEEKLY LIST:

REFERENCE NUMBER: 03001439

REASONS FOR REVIEW:

APPEAL: N    DATA PROBLEM: N    LANDSCAPE: N    LESS THAN 50 YEARS: N  
OTHER: N    PDIL: N    PERIOD: N    PROGRAM UNAPPROVED: N  
REQUEST: N    SAMPLE: N    SLR DRAFT: N    NATIONAL: N

COMMENT WAIVER: N

ACCEPT     RETURN     REJECT    1/16/04 DATE

ABSTRACT/SUMMARY COMMENTS:

**Entered in the  
National Register**

RECOM./CRITERIA \_\_\_\_\_

REVIEWER \_\_\_\_\_ DISCIPLINE \_\_\_\_\_

TELEPHONE \_\_\_\_\_ DATE \_\_\_\_\_

DOCUMENTATION see attached comments Y/N see attached SLR Y/N



1. MILLBORO SCHOOL  
MILLBORO, VA

20333/4

BATH COUNTY, VA  
PHOTO 1 of 13



2. MILLBORO SCHOOL

MILLBORO, VA

20333/5

BATH COUNTY, VA

PHOTO 2 OF 13



3. MILLBORO SCHOOL

MILLBORO, VA

20333/6

BATH COUNTY, VA

PHOTO 3 of 13



4. MILLBORO SCHOOL  
MILLBORO, VA  
20333/7

BATH COUNTY, VA  
PHOTO 4 of 13



5. MILLBORO SCHOOL  
MILLBORO, VA

20333/9

BATH COUNTY, VA  
PHOTO 5 of 13



6. MILLBORO SCHOOL

MILLBORO, VA

20333/10

BATH COUNTY, VA

PHOTO 6 of 13



7. MILLBORO SCHOOL

MILLBORO, VA

20333/19

BATH COUNTY, VA

PHOTO 7 OF 13



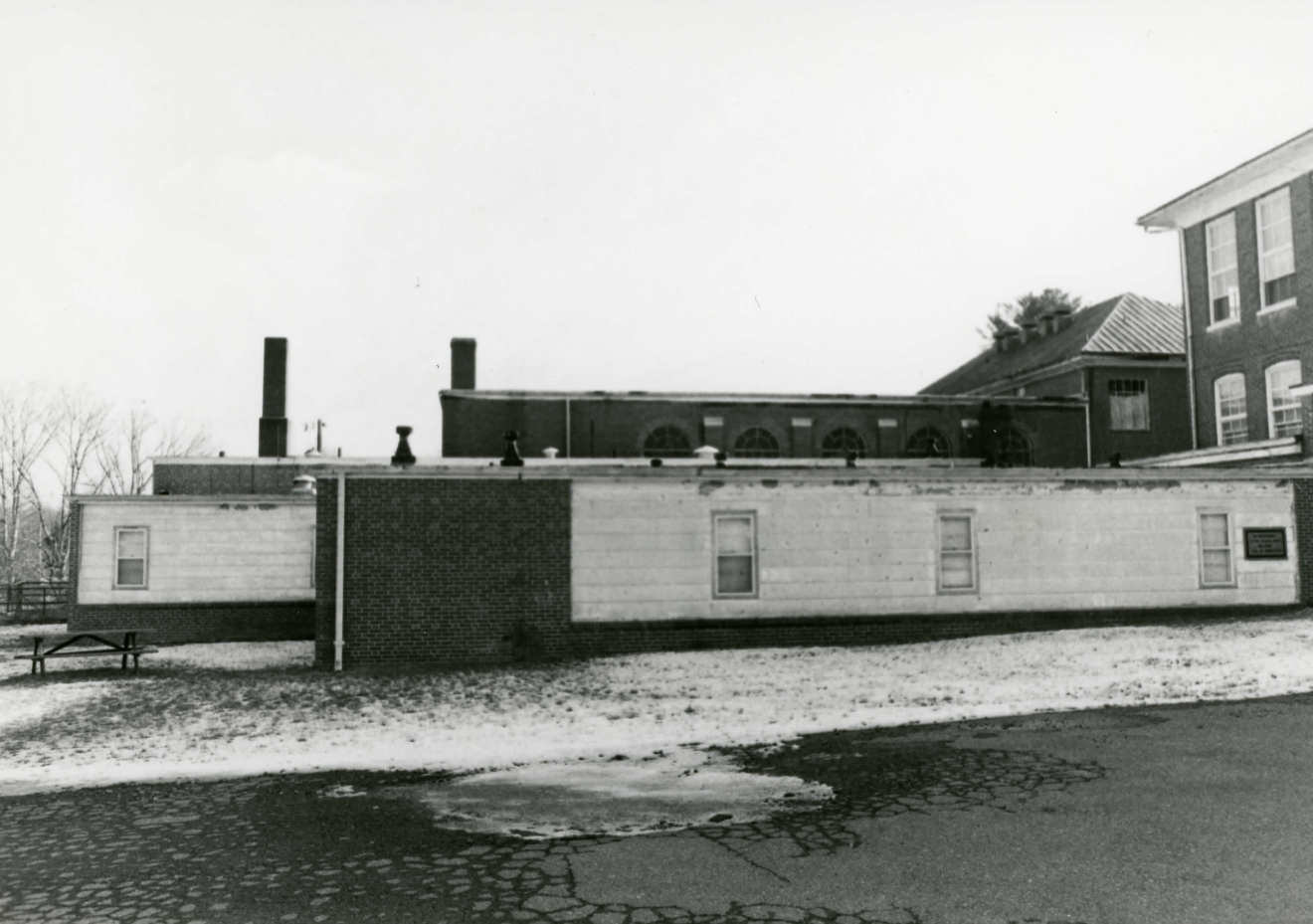
8. MILLBORO SCHOOL

MILLBORO, VA

20333 / 23

BATH COUNTY, VA

PHOTO 8 OF 13



9. MILLBORO SCHOOL

MILLBORO, VA

20333/24

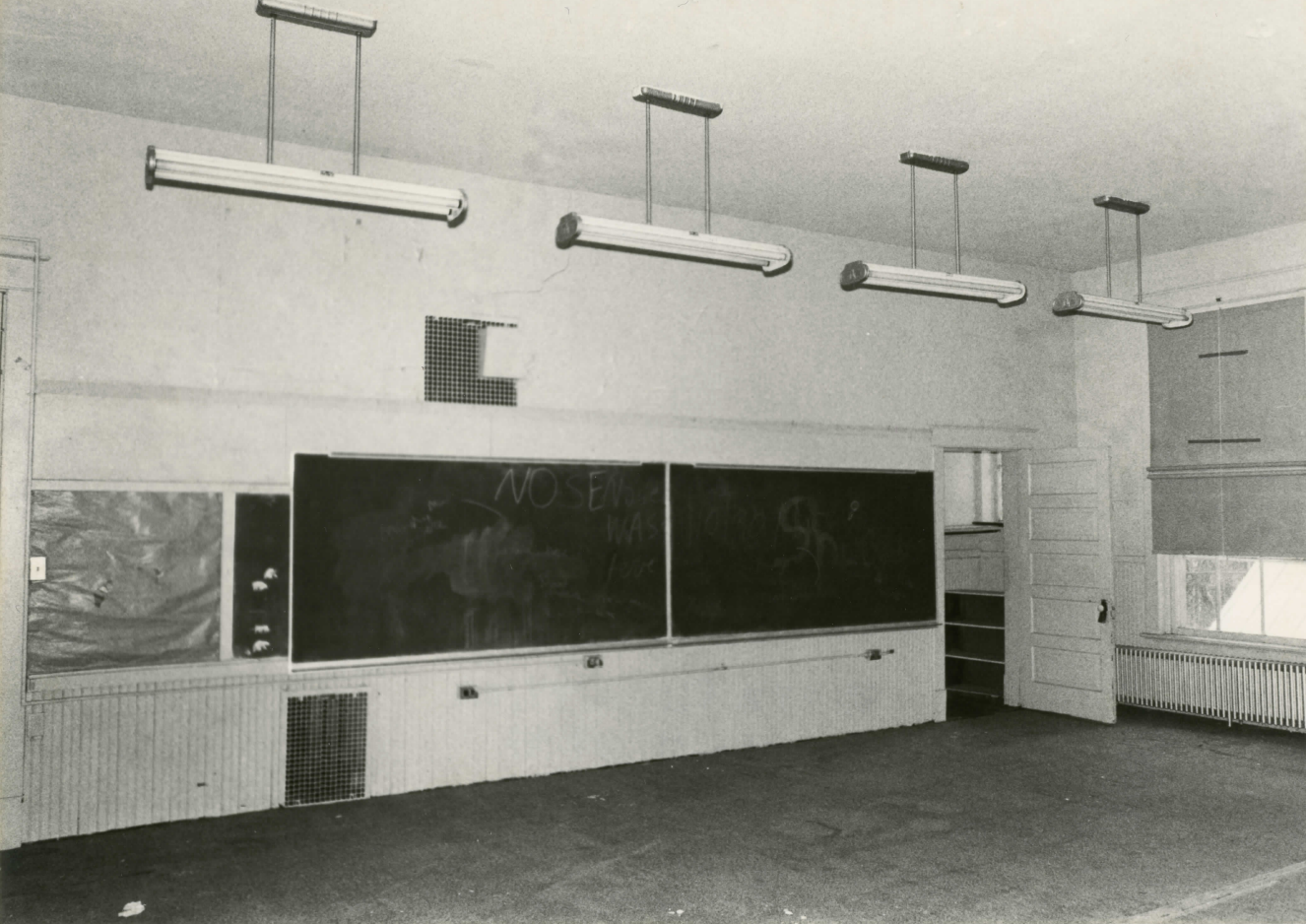
BATH COUNTY, VA

PHOTO 9 OF 13

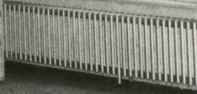


10. MILLBORO SCHOOL  
MILLBORO, VA  
20332/3

BATH COUNTY, VA  
PHOTO 10 of 13



NO SE  
MA  
S



11. MILLBORO SCHOOL

MILLBORO, VA

20332/4

BATH COUNTY, VA

PHOTO 11 OF 13



12. MILLBORO SCHOOL  
MILLBORO, VA

20332/2

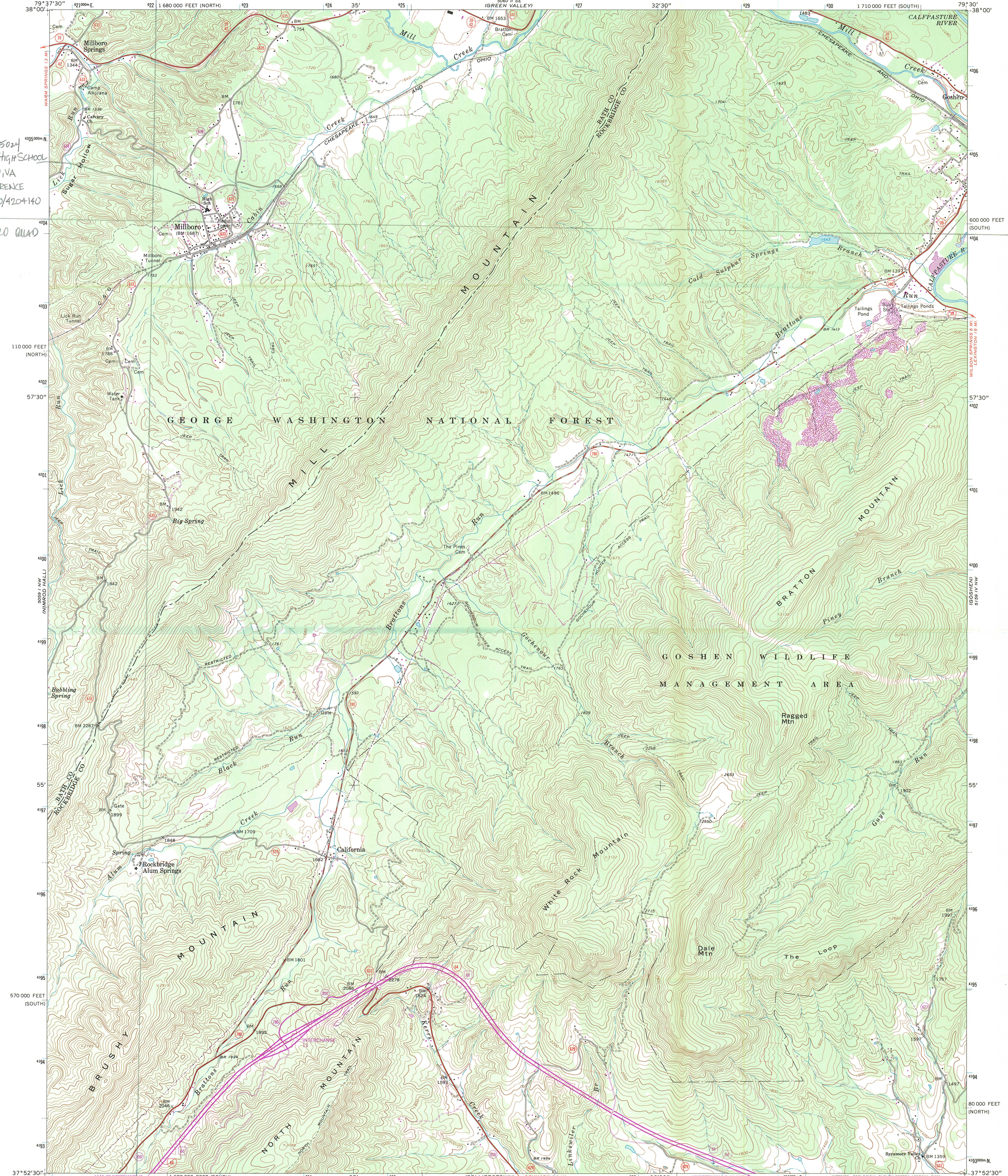
BATH COUNTY, VA  
PHOTO 12 OF 13



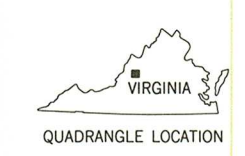
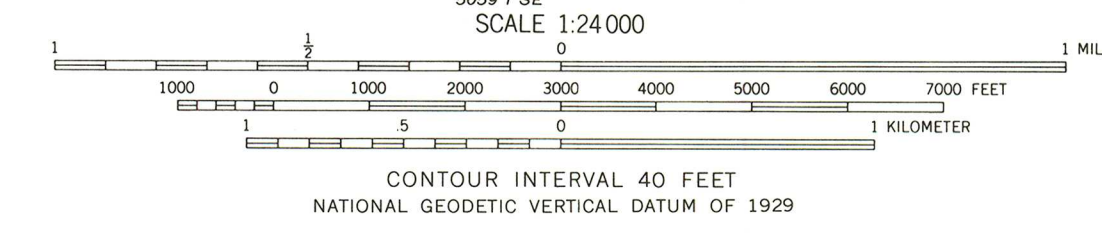
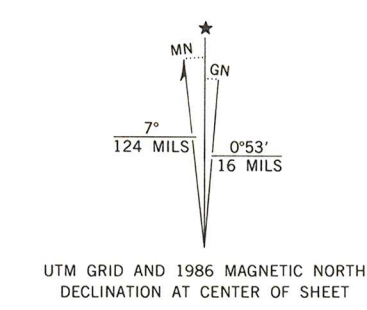
13. MILLBORO SCHOOL  
MILLBORO, VA  
20332/15

BATH COUNTY, VA  
PHOTO 13 of 13

#8-5024  
MILLBORO HIGH SCHOOL  
MILLBORO, VA  
UTM REFERENCE  
17U22WU/4204140  
MILLBORO QUAD



Mapped, edited, and published by the Geological Survey  
Control by USGS and NOS/NOAA  
Topography by photogrammetric methods from aerial photographs taken 1967. Field checked 1969  
Polyconic projection. 10,000-foot grid ticks based on Virginia coordinate system, south and north zones. 1000-meter Universal Transverse Mercator grid ticks, zone 17, shown in blue  
1927 North American Datum  
To place on the predicted North American Datum 1983 move the projection lines 9 meters south and 21 meters west as shown by dashed corner ticks  
Fine red dashed lines indicate selected fence and field lines where generally visible on aerial photographs. This information is unchecked  
There may be private inholdings within the boundaries of the National or State reservations shown on this map



ROAD CLASSIFICATION

Primary highway, all weather, hard surface	Light-duty road, all weather, improved surface	
Secondary highway, all weather, hard surface	Unimproved road, fair or dry weather	
Interstate Route	U. S. Route	State Route

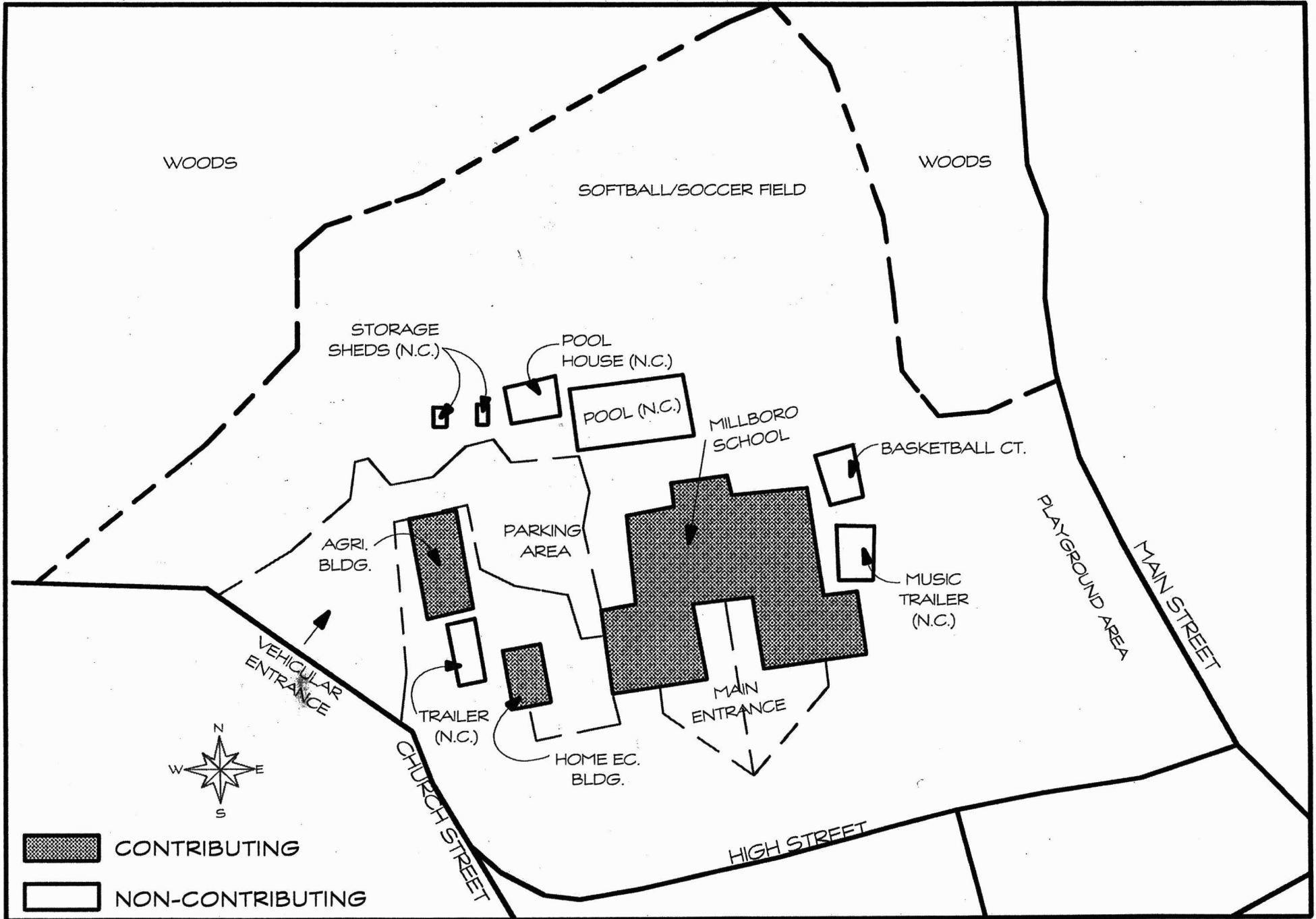
THIS MAP COMPLIES WITH NATIONAL MAP ACCURACY STANDARDS  
FOR SALE BY U. S. GEOLOGICAL SURVEY, RESTON, VIRGINIA 22092  
AND VIRGINIA DIVISION OF MINERAL RESOURCES, CHARLOTTESVILLE, VIRGINIA 22903  
A FOLDER DESCRIBING TOPOGRAPHIC MAPS AND SYMBOLS IS AVAILABLE ON REQUEST

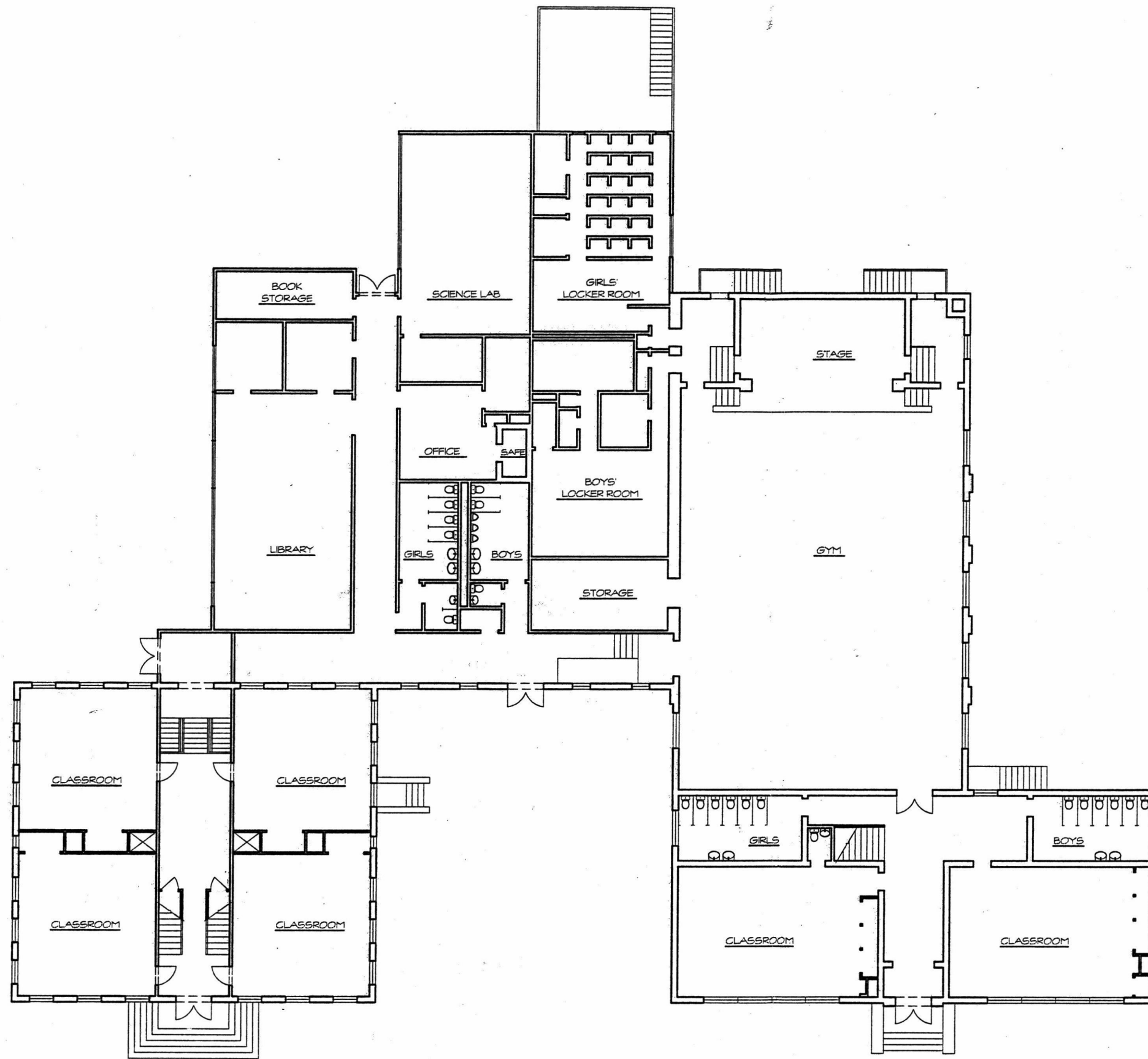
Revisions shown in purple and woodland compiled in cooperation with Commonwealth of Virginia agencies from aerial photographs taken 1981 and other sources. This information not field checked  
Map edited 1986

MILLBORO, VA.  
37079-H5-TF-024

1969  
PHOTOREVISED 1986  
DMA 5059 I NE - SERIES H834

# MAP OF MILLBORO SCHOOL PROPERTY

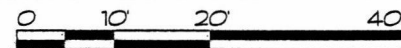




1

FIRST FLOOR

SCALE: 1" = 20'



FRAZIER ASSOCIATES

ARCHITECTURE & PLANNING

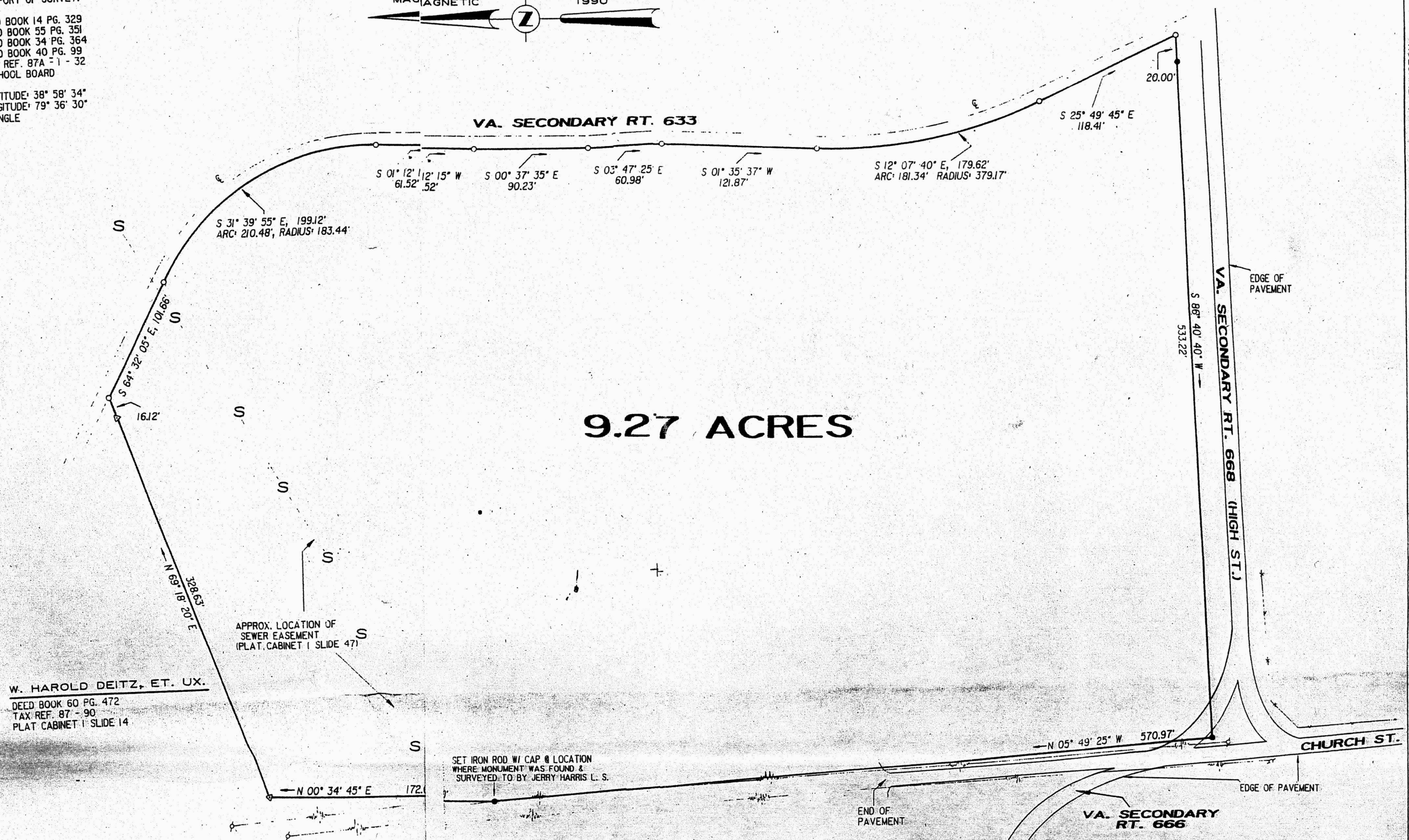
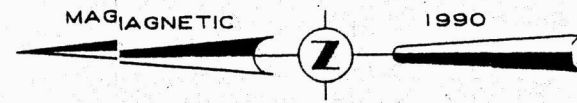
213 NORTH AUGUSTA STREET, STAUNTON, VA 24401  
 PHONE 540.886.6230 FAX 540.886.8629

MILLBORO SCHOOL

Millboro, Virginia  
 Bath County, Virginia

**NOTES:**

- 1) SEE ATTACHED REPORT OF SURVEY.
- 2) REFERENCES: DEED BOOK 14 PG. 329  
DEED BOOK 55 PG. 351  
DEED BOOK 34 PG. 364  
DEED BOOK 40 PG. 99  
TAX REF. 87A - 1 - 32  
BATH COUNTY SCHOOL BOARD
- 3) APPROXIMATE LATITUDE: 38° 58' 34"  
APPROXIMATE LONGITUDE: 79° 36' 30"  
MILLBORO QUADRANGLE



**9.27 ACRES**

**W. HAROLD DEITZ, ET. UX.**  
DEED BOOK 60 PG. 472  
TAX REF. 87 - 90  
PLAT CABINET 1 SLIDE 14

SET IRON ROD W/ CAP @ LOCATION  
WHERE MONUMENT WAS FOUND &  
SURVEYED TO BY JERRY HARRIS L. S.

**BATH CO. SCHOOL BOARD**  
DEED BOOK 63 PG. 257  
TAX REF. 87 - 89

**BATH COUNTY  
SCHOOL BOARD  
SURVEYED 1990**

- LEGEND:**
- ◻ EXISTING 1" PINCH TOP IRON PIPE
  - SET IRON ROD WITH ALUMINUM CAP



**N TOP SURVEYORS, INC.**  
 LOW MOOR      DALEVILLE      LEXINGTON  
 VIRGINIA      992-5155      464-3221