

RECEIVED

United States Department of the Interior
National Park Service

JUL 18 1988

National Register of Historic Places
Registration Form

NATIONAL
REGISTER

This form is for use in nominating or requesting determinations of eligibility for individual properties or districts. See instructions in *Guidelines for Completing National Register Forms* (National Register Bulletin 16). Complete each item by marking "x" in the appropriate box or by entering the requested information. If an item does not apply to the property being documented, enter "N/A" for "not applicable." For functions, styles, materials, and areas of significance, enter only the categories and subcategories listed in the instructions. For additional space use continuation sheets (Form 10-900a). Type all entries.

1. Name of Property

historic name Tunstall, Eldon B., Farm

other names/site number

2. Location

street & number State Road 1500

N/A not for publication

city, town Bullock

X vicinity

state North Carolina code NC

county Granville

code 077

zip code 27565

3. Classification

Ownership of Property

- private
- public-local
- public-State
- public-Federal

Category of Property

- building(s)
- district
- site
- structure
- object

Number of Resources within Property

Contributing	Noncontributing
13	buildings
1	sites
2	2 structures
	objects
16	2 Total

Name of related multiple property listing:
Historic and Architectural Resources of
Granville County, North Carolina

Number of contributing resources previously
listed in the National Register 0

4. State/Federal Agency Certification

As the designated authority under the National Historic Preservation Act of 1966, as amended, I hereby certify that this nomination request for determination of eligibility meets the documentation standards for registering properties in the National Register of Historic Places and meets the procedural and professional requirements set forth in 36 CFR Part 60. In my opinion, the property meets does not meet the National Register criteria. See continuation sheet.

William S. Phipps
Signature of certifying official
State Historic Preservation Officer
State or Federal agency and bureau

6-14-88
Date

In my opinion, the property meets does not meet the National Register criteria. See continuation sheet.

Signature of commenting or other official

Date

State or Federal agency and bureau

5. National Park Service Certification

I, hereby, certify that this property is:

- entered in the National Register. See continuation sheet.
- determined eligible for the National Register. See continuation sheet.
- determined not eligible for the National Register.
- removed from the National Register.
- other, (explain:)

Arlene Byers

Entered in the
National Register

8/31/88

Signature of the Keeper

Date of Action

6. Function or Use

Historic Functions (enter categories from instructions)

Domestic-single dwelling

Agriculture/Subsistence

Current Functions (enter categories from instructions)

Domestic-single dwelling

Agriculture/Subsistence

7. Description

Architectural Classification

(enter categories from instructions)

Other: I-house

Materials (enter categories from instructions)

foundation stone

walls weatherboard

roof metal

other brick

wood

Describe present and historic physical appearance.

United States Department of the Interior
National Park ServiceNational Register of Historic Places
Continuation SheetSection number 7 Page 1 DESCRIPTION

Rising tall and white near the center of an expanse of neatly trimmed yard and fields, the 1907 Eldon B. Tunstall house is a well-maintained, intact representative of the many traditional, center-hall plan I-houses raised in Granville County in the late nineteenth and early twentieth centuries. Running from its front elevation to the northwest is a long gravel lane that skirts the edge of a former store building and crosses a finger of Beaver Creek Pond before terminating at Old US Highway 15. To its rear, arrayed in two uneven rows, is a complete collection of early twentieth century, bright leaf tobacco farm outbuildings.

Like many of its late nineteenth and early twentieth century contemporaries, the house is a weatherboarded frame building, two stories tall and one-room deep, with a porch shading its three downstairs front bays, brick chimneys bracketing its gable ends and an ell extended to its rear. Its traditional form and materials are joined by a traditional plan; a center hallway divides its two downstairs and two upstairs rooms. In decoration, too, the house is representative of its contemporaries. It is plainly finished, with few decorative features. Its exterior adornment consists of simply articulated corner pilasters and cornice returns, and turned posts at its front porch, chamfered posts at its ell.

Inside, the house is also plainly finished. A heavy cedar newel post anchors the tobacco stick railings of its front stair, five-panel doors connect its rooms, and mantels with simply curved or scalloped lintels and plainly incised posts punctuate the end walls of its plastered bedrooms and parlor. The few changes made to the house include the 1939 construction of a partition wall at the back stairway and a one-story kitchen ell at the rear of the original two-story ell, as well as the addition of bathrooms and dropped ceilings.

The farm retains many of its early and original outbuildings, a few set near the kitchen ell, but most stretched in two roughly parallel rows to the rear of the house ["B" on accompanying sketch map]. All of the 16 outbuildings, but for two small well houses, are more than 50 years old and contribute to the integrity of the farm. To the side and rear of the ell are a tiny frame dairy [C] built in the late 1910s, a circa 1910 frame smokehouse [D] and a non-contributing concrete block well house [E] built in the late 1940s. The northern row of

United States Department of the Interior
National Park Service

National Register of Historic Places
Continuation Sheet

Section number 7 Page 2

outbuildings, extending east from the well house, contains: a circa 1908 square-notched log corn crib [F]; a non-contributing concrete block well house [G] built in the early 1960s; a circa 1936 V-notched log horse and mule barn [H]; a circa 1913 frame packhouse [I]; and a circa 1913 V-notched log strip house [J] with a similarly constructed, late 1930s ordering house [K] appended to its eastern gable end. The opposite flank of outbuildings contains, from west to east: a circa 1920 frame garage [Q]; a circa 1909 frame shop [P]; a frame chicken house built in the late 1920s [O]; and three V-notched log tobacco barns, the first built circa 1911 [N], the second circa 1916 [M] and the last circa 1923 [L].

A single outbuilding stands to the front of the house, a frame store built by the Tunstalls around 1921 adjacent to the former route of US Highway 1. With the shifting of US 1 and construction of Old US Highway 15 in the mid-1920s (which has since been replaced by a newer road), the store was closed and converted to a storage building.

¹The dates of construction of the house and outbuildings were provided by the house's owners and occupants, Clifford Tunstall and Pearl Tunstall Crews - two of the children of Eldon B. and Alice Tunstall - during interviews on January 3, 1986 and September 16, 1987. Mr. Tunstall, who was born just to the north in 1900, vividly remembers the construction of the house and the outbuildings, many of which he helped build.

²Interview with Clifford Tunstall and Pearl Tunstall Crews, September 16, 1987.

OLD COUNCIL TREE
BOND

8. Statement of Significance

Certifying official has considered the significance of this property in relation to other properties:

nationally statewide locally

Applicable National Register Criteria A B C D

Criteria Considerations (Exceptions) A B C D E F G

Areas of Significance (enter categories from instructions)

Architecture

Agriculture

Period of Significance

1907-1937

Significant Dates

1907

Cultural Affiliation

N/A

Significant Person

N/A

Architect/Builder

Bolden, Tom, carpenter

Others unknown

State significance of property, and justify criteria, criteria considerations, and areas and periods of significance noted above.

See continuation sheet

9. Major Bibliographical References

Granville County Deeds, Granville County Courthouse, Oxford, N.C.

Granville County Wills. Granville County Courthouse, Oxford, N.C.

Interviews with Clifford Tunstall and Pearl Tunstall Crews, son and daughter of Eldon B. Tunstall and present owners and occupants of house, January 3, 1986, and September 16, 1987.

See continuation sheet

Previous documentation on file (NPS):

- preliminary determination of individual listing (36 CFR 67) has been requested
- previously listed in the National Register
- previously determined eligible by the National Register
- designated a National Historic Landmark
- recorded by Historic American Buildings Survey # _____
- recorded by Historic American Engineering Record # _____

Primary location of additional data:

- State historic preservation office
- Other State agency
- Federal agency
- Local government
- University
- Other

Specify repository: _____

10. Geographical Data

Acreeage of property Approximately 40 acres

UTM References

A
 Zone Easting Northing

C

B
 Zone Easting Northing

D

See continuation sheet

Verbal Boundary Description

See continuation sheet

Boundary Justification

See continuation sheet

11. Form Prepared By

name/title Marvin A. Brown/Architectural Historian & Patricia Esperon/Historian

organization Granville County-Oxford Historic Survey date 10/20/87

street & number P.O. Box 1556 (State Historic Pres. Office) telephone 919-693-1491

city or town Oxford state N.C. zip code 27565

United States Department of the Interior
National Park ServiceNational Register of Historic Places
Continuation SheetSection number 8 Page 1

STATEMENT OF SIGNIFICANCE

The traditional plan, materials and form of its farmhouse, coupled with its full array of well-maintained early twentieth century outbuildings, make the Eldon B. Tunstall Farm significant as an intact representative of the way of life on a turn of the century, old tobacco belt, bright leaf farm. (See Historic Context 2 - Bright Leaf Tobacco and Rural Granville County, 1866-1937) Virtually unaltered, the plainly finished, frame, center-hall plan I-house erected in 1907 for Eldon B. (1873-1962) and Alice (Jones) Tunstall (1874-1962) is typical of many dwellings raised on bright leaf tobacco farms throughout the county during the latter third of the nineteenth century and the opening quarter of the twentieth. (See associated Property Type 3 - Bright Leaf Era Farmhouses and Tenant Houses) Although many similarly fashioned farmhouses were raised during those years, and many still stand, few are as intact and well-maintained, and fewer yet retain as full and representative a complement of traditional, log and frame, early twentieth century outbuildings. (See associated Property Type 6 - Outbuildings) The traditional way of life and cultivation and processing of the bright leaf continued on the farm into the 1950s, but its period of significance has been assigned a closing date of 1937, for it has not achieved exceptional significance within the past 50 years.

The Tunstalls' house is on the larger end of the scale of traditional bright leaf tobacco farmhouses. Most tenants and many small farmers during the bright leaf era were living in less substantial one and one-and-a-half story houses. The house on the Puckett Family Farm in central Granville County, for example - also nominated to the National Register - is an equally traditional but smaller dwelling built for a smaller landholder. A center-hall plan house one-and-a-half stories in height, it was raised on a 135 acre farm. The Tunstalls, perhaps more prosperous on their 200 acres, raised their center-hall plan dwelling a full two stories.

The Tunstalls acquired the 200 acres upon which they were to raise their house and farm from Samuel R. Adams, L. C. Adams and Mrs. C. W. Adams in 1906 [Deed Book 60, Page 83]. In 1907, they employed carpenters, one of whom was named Tom Bolden, to help build their traditional dwelling, the wood of which came from their recently cleared land. Aided by their seven sons and two daughters, they raised crops and livestock for the table and, most importantly, fields of tobacco. Their emphasis on the bright leaf is apparent from the outbuildings they built, which

United States Department of the Interior
National Park Service

National Register of Historic Places
Continuation Sheet

Section number 8 Page 2

include three typically tall tobacco barns, an unusually long and squat packhouse, a striphouse and an attached ordering house used to soften the tobacco before it was prepared for market. The subsistence aspects of farm life, even that devoted predominantly to the raising of a cash crop, are indicated by the presence of a smokehouse, a dairy, a corn crib and a chicken house. A rare surviving former store building, built around 1921 along the former route of old US Highway 1, still stands to the house's fore. The Tunstalls died three days apart in 1962 and left the farm to their children [Eldon B. Tunstall will, Will Book 34, Page 178, probated 1962]. It is now owned and occupied by their son and daughter, Clifford Tunstall and Pearl Tunstall Crews.

¹ Interviews with Clifford Tunstall and Pearl Tunstall Crews, January 3, 1986, and September 16, 1987.

OLD COUNCIL TREE
BOND
100% COTTON FIBER

United States Department of the Interior
National Park ServiceNational Register of Historic Places
Continuation SheetSection number 10 Page 1 GEOGRAPHICAL DATAUTM REFERENCES

	Zone	Easting	Northing
A	17	721020	4045830
B	17	721140	4045790
C	17	721180	4045510
D	17	721060	4045400
E	17	720870	4045350
F	17	720680	4045580

VERBAL BOUNDARY DESCRIPTION

Beginning at point A: 17 721020 4045830 on the USGS polygon, where the 320 foot elevation line (also the owner's property line) meets the tree line, continuing in a straight line southeast along the edge of the woods approximately 500 feet to point B: 17 721140 4045790 on the polygon, where the tree line turns south. Continuing in a straight line south, along the edge of the woods, approximately 625 feet to point C: 17 721180 4045510 on the polygon, where the tree line turns southwest. Continuing in a straight line southwest, along the field line, approximately 625 feet to point D: 17 721060 4045400 on the polygon, where the tree line turns west. Continuing in a straight line west, along the edge of the woods, approximately 325 feet to point E: 17 720870 4045350 on the polygon, where the tree line turns north. Continuing in a straight line north, along the edge of the woods, approximately 900 feet to point F: 17 720680 4045580 on the polygon, where the tree line meets the 320 foot elevation line. Continuing along the 320 foot elevation line, marked on the USGS map, approximately 1300 feet to the point of origin.

BOUNDARY JUSTIFICATION

Approximately 40 acres that include the dwelling, outbuildings, and fields that have been historically associated

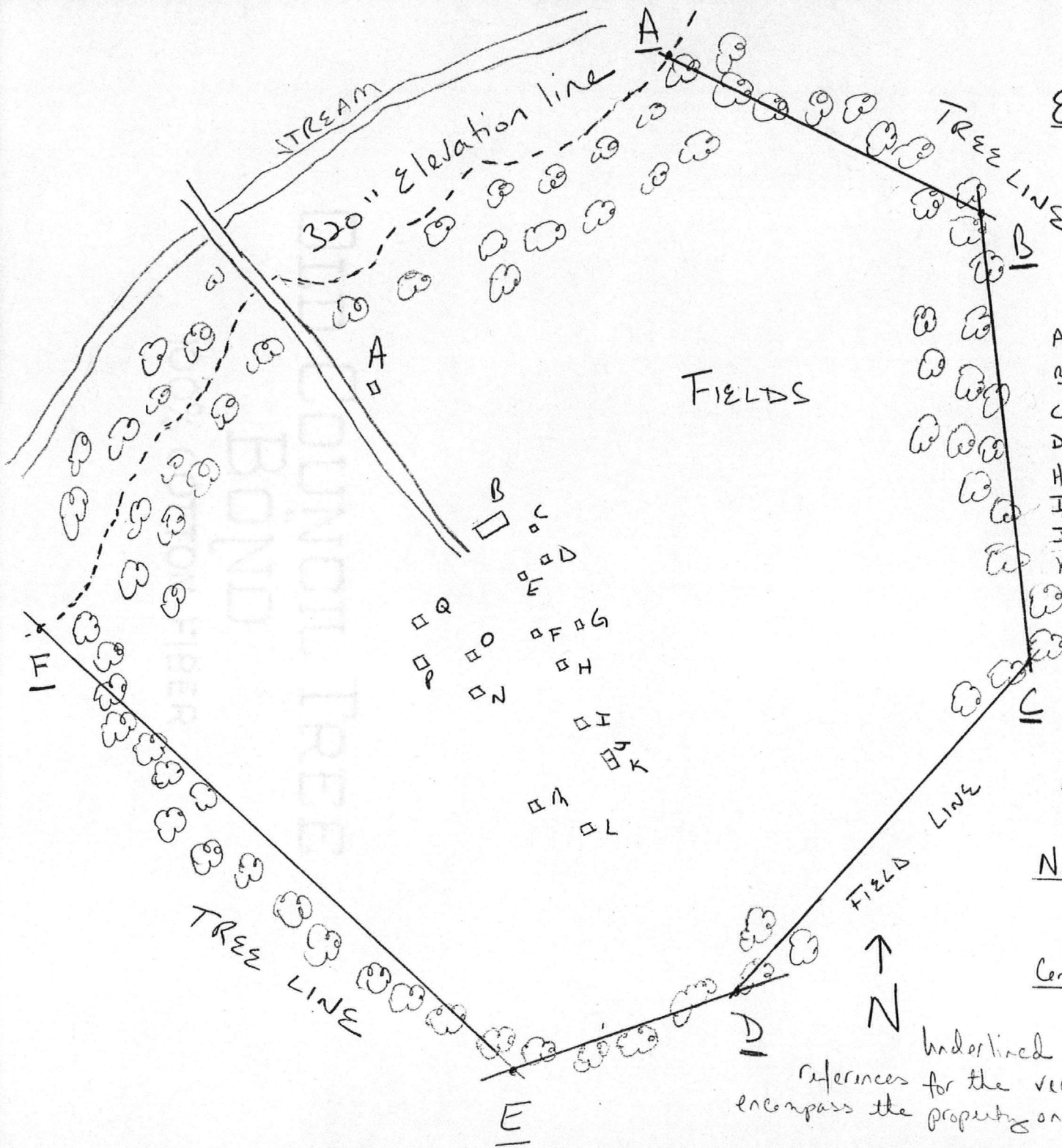
**United States Department of the Interior
National Park Service**

**National Register of Historic Places
Continuation Sheet**

Section number 10 Page 2

with the property, maintain historic integrity, and convey the property's historic setting are being nominated for the National Register of Historic Places. The remaining property has been excluded because it is now woodland and is no longer used for farm production.

The eastern boundary from UTM points A to B and B to C includes the fields to its west and excludes woodland to its east. The remaining eastern boundary from UTM points C to D includes the dwelling to its west and excludes property to the east not owned by the owner. The southern boundary from UTM points D to E and E to F includes the dwelling to its north and excludes woodland to its south. The western boundary from UTM points F to A includes the dwelling to its east and excludes property not owned by the owners to its west.



ELDON B. TUNSTALL FARM

Granville County, N.C.

APPROXIMATE SCALE 1"=200'

APPROXIMATELY 40 ACRES

Contributing Buildings:

- A- frame store, ca. 1921
- B- frame house, ca. 1907
- C- frame dairy, late 1910s
- D- frame smokehouse, ca. 1910
- H- log barn, ca. 1936
- I- frame packhouse, ca. 1913
- J- V-notched log strip house, ca. 1913
- K- V-notched log ordering house, late 1930s
- L- V-notched log tobacco barn ca. 1923
- M- V-notched log tobacco barn, ca. 1916
- N- V-notched log tobacco barn, ca. 1911
- P- frame shop, ca. 1909
- Q- frame garage, ca. 1920

Contributing Structures:

- F- square notched log corner, ca. 1908
- O- frame chickenhouse, late 1920s

Non-Contributing Structures:

- E- concrete block wellhouse, late 1940s
- G- concrete block wellhouse, 1960s

Contributing Site:

Cultivated fields

Underlined capital letters represent the corner references for the vertices of the polygon drawn to encompass the property on the accompanying USGS map.

4/18/88

United States Department of the Interior
National Park Service

National Register of Historic Places
Continuation Sheet

Section number _____ Page _____

Name Granville County MPS
State NORTH CAROLINA

Nomination/Type of Review

Date Listed

- | | | | | |
|----------|--|---|---------|-----|
| SLR 22. | Adoniram Masonic Lodge | Substantive Review | 8/31/88 | SLR |
| 23. | Bobbitt-Rogers House and Tobacco
Manufactory District | Substantive Review | 8/31/88 | SLR |
| 24. | Brassfield Baptist Church | Entered in the
National Register | 8/31/88 | |
| 25. | Central Orphanage | Entered in the
National Register | 8/31/88 | |
| 26. | First National Bank Building | Entered in the
National Register | 8/31/88 | |
| SLR 27. | Harris-Currin House | Substantive Review | 8/31/88 | SLR |
| S 56 28. | Hunt, Joseph P., Farm | Substantive Review | 8/31/88 | |
| 29. | Lawrence, John P., Plantation | Substantive Review | 8/31/88 | |
| 30. | Littlejohn, Joseph B., House | Entered in the
National Register | 8/31/88 | |
| 31. | Mount Energy Historic District | Entered in the
National Register | 8/31/88 | |
| 32. | Oliver-Morton Farm | Entered in the
National Register | 8/31/88 | |
| S 61 33. | Royster, John Henry, Farm | Substantive Review | 8/31/88 | |
| 34. | Salem Methodist Church | Substantive Review | 8/31/88 | SLR |
| 35. | Sherman, Elijah, Farm | Entered in the
National Register | 8/31/88 | |
| 36. | Stovall, John W., Farm | Entered in the
National Register | 8/31/88 | |
| 37. | Tunstall, Eldon B., Farm | Entered in the
National Register | 8/31/88 | |
| S 64 38. | Winston, Obediah, Farm | Substantive Review | 8/31/88 | |
| 67 39. | Paschall--Daniel House | DOE/OWNER OBJECTION
Substantive Review | 8/31/88 | |

Determined Eligible

UNITED STATES DEPARTMENT OF THE INTERIOR
NATIONAL PARK SERVICE

NATIONAL REGISTER OF HISTORIC PLACES
EVALUATION/RETURN SHEET

REQUESTED ACTION: NOMINATION

PROPERTY NAME: Tunstall, Eldon B., Farm

MULTIPLE NAME: Granville County MPS

STATE & COUNTY: NORTH CAROLINA, Granville

DATE RECEIVED: 7/18/88 DATE OF PENDING LIST: 8/02/88
DATE OF 16TH DAY: 8/18/88 DATE OF 45TH DAY: 9/01/88
DATE OF WEEKLY LIST:

REFERENCE NUMBER: 88001255

NOMINATOR: STATE

REASONS FOR REVIEW:

APPEAL: N DATA PROBLEM: N LANDSCAPE: N LESS THAN 50 YEARS: N
OTHER: N PDIL: N PERIOD: N PROGRAM UNAPPROVED: N
REQUEST: N SAMPLE: N SLR DRAFT: N

COMMENT WAIVER: N

ACCEPT RETURN REJECT 8/31/88 DATE

Entered in the
National Register

ABSTRACT/SUMMARY COMMENTS:

ABSTRACT/SUMMARY COMMENTS (CONTINUED FROM PREVIOUS SIDE)

Decision: _____
Date: _____
Signature: _____
Title: _____

DOCUMENTATION see attached comments Y/N see attached SLR Y/N

CLASSIFICATION

___count ___resource type

STATE/FEDERAL AGENCY CERTIFICATION

FUNCTION

___historic ___current

DESCRIPTION

___architectural classification ___materials ___descriptive text

SIGNIFICANCE

___criteria ___criteria considerations ___areas of sig.
___periods of sig. ___significant dates ___cultural affl.
___sig. person ___architect/builder ___sig. statement

BIBLIOGRAPHY

GEOGRAPHICAL DATA

___acreage ___verbal boundary description
___UTMs ___boundary justification

ACCOMPANYING DOCUMENTATION/PRESENTATION

___sketch maps ___USGS maps ___photographs ___presentation

OTHER COMMENTS

Questions concerning the nomination may be directed to

Signed _____ Date _____ Phone _____



NORTH CAROLINA DIVISION OF ARCHIVES & HISTORY
RALEIGH, NC 27611

NEGATIVE NUMBER N. 87-10-277

NEGATIVE LOCATION NC Archives & History

PHOTOGRAPHER M. G. Brown

PHOTO DATE 9-87

CAMERA DIRECTION SE

LOCATION (DISTRICT, IF APPLICABLE)

Granville Co.

SUBJECT Eldon B. Tunstall Farm

House ext.

Photo #1



96

NORTH CAROLINA DIVISION OF ARCHIVES & HISTORY
RALEIGH, NC 27611

NEGATIVE NUMBER N.87-9-96

NEGATIVE LOCATION NC Archives & History

PHOTOGRAPHER Mrs. Brown

PHOTO DATE 1-86

CAMERA DIRECTION NE NE

LOCATION (DISTRICT, IF APPLICABLE)

Granville Co., Bullock vic.

SUBJECT Eldon B. Tunstall Farm

Down stairs - downstairs hallway

Photo #2



NORTH CAROLINA DIVISION OF ARCHIVES & HISTORY
RALEIGH, NC 27611

NEGATIVE NUMBER

N. 87-9-102

NEGATIVE LOCATION

NC Archives & History

PHOTOGRAPHER

M. Brown

PHOTO DATE

1-86

CAMERA DIRECTION

NW

LOCATION (DISTRICT, IF APPLICABLE)

Granville Co., Bullock vic.

SUBJECT

Eldon B. Tunstall Farm

Outbuildings - ~~and house~~ - ~~and house~~

Photo # 3



NORTH CAROLINA DIVISION OF ARCHIVES & HISTORY
RALEIGH, NC 27611

NEGATIVE NUMBER N. 87-9-100

NEGATIVE LOCATION NC Archives & History

PHOTOGRAPHER M. Brown

PHOTO DATE 1-86

CAMERA DIRECTION NE

LOCATION (DISTRICT, IF APPLICABLE)

Granville Co., Bullock vic.

SUBJECT Eldon B. Tunstall Farm

Outbuildings - prod house, str. phone + ordering house

Photo #4

Please refer to the map in the
Multiple Property Cover Sheet
for this property

Multiple Property Cover Sheet Reference Number: 64500360