



1144

United States Department of the Interior
National Park Service

National Register of Historic Places Registration Form

This form is for use in nominating or requesting determinations for individual properties and districts. See instructions in How to Complete the National Register of Historic Places Registration Form (National Register Bulletin 16A). Complete each item by marking "x" in the appropriate box or by entering the information requested. If an item does not apply to the property being documented, enter "N/A" for "not applicable." For functions, architectural classification, materials, and areas of significance, enter only categories and subcategories from the instructions. Place additional entries and narrative items on continuation sheets (NPS Form 10-900a). Use a typewriter, word processor, or computer, to complete all items.

1. Name of Property

historic name Mt. Pleasant Winery Historic District

other names/site number N/A

2. Location

street & number 5634 High n/a not for publication

city or town Augusta n/a vicinity

state Missouri code MO county St. Charles code 183 zip code 63332

3. State/Federal Agency Certification

As the designated authority under the National Historic Preservation Act, as amended, I hereby certify that this nomination request for determination of eligibility meets the documentation standards for registering properties in the National Register of Historic Places and meets the procedural and professional requirements set forth in 36 CFR Part 60. In my opinion, the property meets does not meet the National Register criteria. I recommend that this property be considered significant nationally statewide locally. (See continuation sheet for additional comments.)

Claire F. Blackwell 9 August 1994
Signature of certifying official/Title Deputy SHPO Date
Missouri Department of Natural Resources
State of Federal agency and bureau

In my opinion, the property meets does not meet the National Register criteria. (See continuation sheet for additional comments.)

Signature of certifying official/Title _____ Date _____
State or Federal agency and bureau _____

4. National Park Service Certification

I hereby certify that the property is:

- entered in the National Register.
 - See continuation sheet.
- determined eligible for the National Register.
 - See continuation sheet.
- determined not eligible for the National Register.
- removed from the National Register.
- other, (explain:) _____

Signature of the Keeper
[Signature]

Date of Action

9/29/94

Mt. Pleasant Winery

Name of Property

St. Charles, MO

County and State

5. Classification

Ownership of Property

(Check as many boxes as apply)

- private
- public-local
- public-State
- public-Federal

Category of Property

(Check only one box)

- building(s)
- district
- site
- structure
- object

Number of Resources within Property

(Do not include previously listed resources in the count.)

Contributing	Noncontributing	
4		buildings
		sites
1		structures
		objects
5	0	Total

Name of related multiple property listing

(Enter "N/A" if property is not part of a multiple property listing.)

Historic Resources of Augusta, MO

Number of contributing resources previously listed in the National Register

0

6. Function or Use

Historic Functions

(Enter categories from instructions)

AGRICULTURE/processing

AGRICULTURE/storage

DOMESTIC/single dwelling

Current Functions

(Enter categories from instructions)

AGRICULTURE/storage

7. Description

Architectural Classification

(Enter categories from instructions)

no style

Materials

(Enter categories from instructions)

foundation STONE

walls BRICK

WOOD

roof METAL

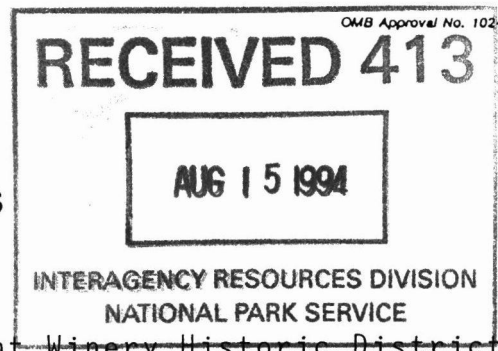
other CONCRETE

Narrative Description

(Describe the historic and current condition of the property on one or more continuation sheets.)

United States Department of the Interior
National Park Service

National Register of Historic Places Continuation Sheet



Section number 7 Page 1 Mt. Pleasant Winery Historic District
St. Charles County, MO

The Mt. Pleasant Winery Historic District is located at 5634 High Street (Bottom Road) on the west side of Augusta, Missouri. The district consists of five contributing properties. There are four buildings: a ca. 1859 frame house with ca. 1880 brick outbuilding (Property Type: Vernacular Residence and subtype: Outbuilding); and an 1881 brick winery building with an 1881 stone well house (Property Type: Commercial/Industrial Building), as well as one contributing structure, a ca. 1865 wine cellar, a portion of which is beneath the winery building. The buildings and the cellar have survived with only minor alterations which do not detract substantially from the overall integrity of design and materials. The district boundary excludes three winery buildings of recent construction which stand directly west of the nominated historic buildings.

Built by winery founder George Muench, the ca. 1859 frame house features half-timber construction with brick nogging; walnut weatherboarding (painted white) covers the building. The plan features a central hall with an open stair to the loft at the end of the hall; there is one room on each side of the hall; a ca. 1920 addition extends across the rear of the house (Fig. 1). A basement is found only under the west room. The gabled roof features one large dormer. A frame porch extends across the primary (south) facade; a bay window is featured on the east elevation.

The 1881 red brick winery building measures approximately 24 X 62 1/2 feet with a 15 X 17 foot extension on the north end which houses steps leading to the wine cellar rooms (Fig. 2). The gabled metal-roofed building is articulated with segmentally arched openings except for paired lunettes on the gable end; brick dentils trim the cornice line and a wood bargeboard embellishes gable ends. Entrance is gained on the west elevation through a pedestrian door and double wagon doors which are also installed on the opposing east elevation. The ca. 1865 wine cellars, set at right angles to each other (see figure 3), feature brick floors and brick barrel vaults supported by stone walls. The cellars are counted as a single unit.

Also standing within the District are two small auxiliary properties. A wellhouse of stone construction features a wood lintel inscribed with the date 1881 over the entrance on the south elevation; scalloped wood banding (matching the bargeboard on the winery) trims the structure. A small, circa 1880 gabled-roof brick outbuilding (reported to have housed a kiln used to fire bricks for the winery building but possibly a smokehouse) stands on the west side of the rear elevation of the Muench house.

United States Department of the Interior
National Park Service

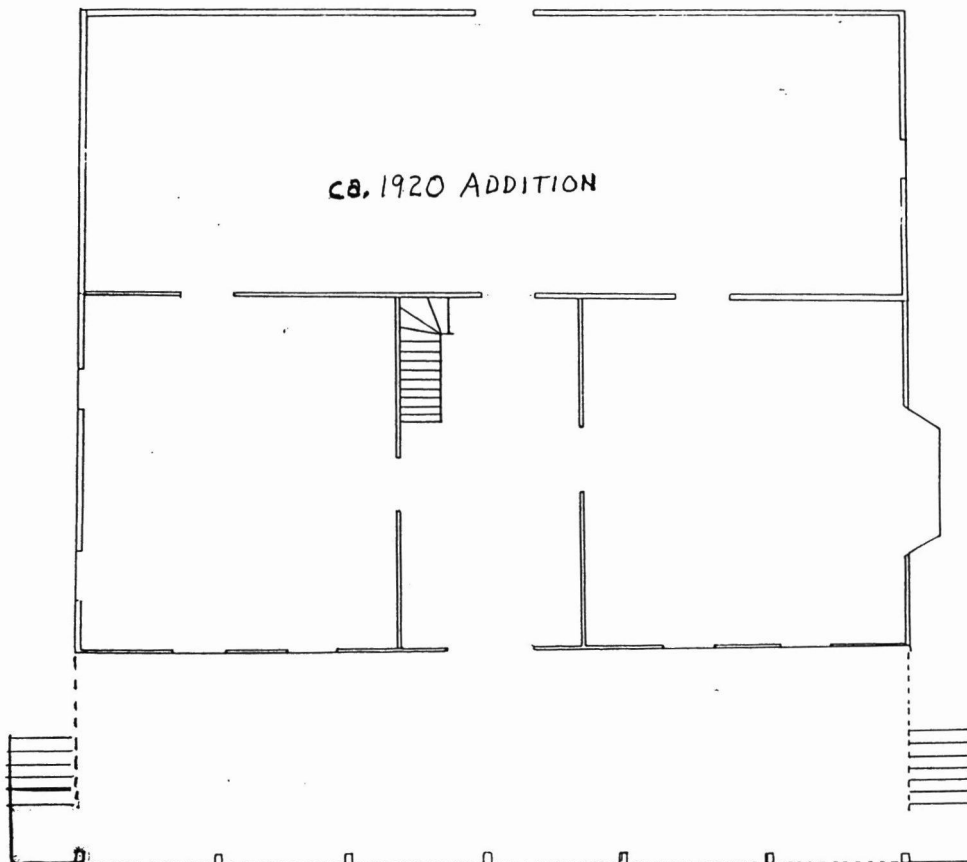
National Register of Historic Places Continuation Sheet

Section number 7 Page 2 Mt. Pleasant Winery Historic District
St. Charles County, MO

MT. PLEASANT WINERY

FIG. 1

GEORGE MUENCH HOUSE

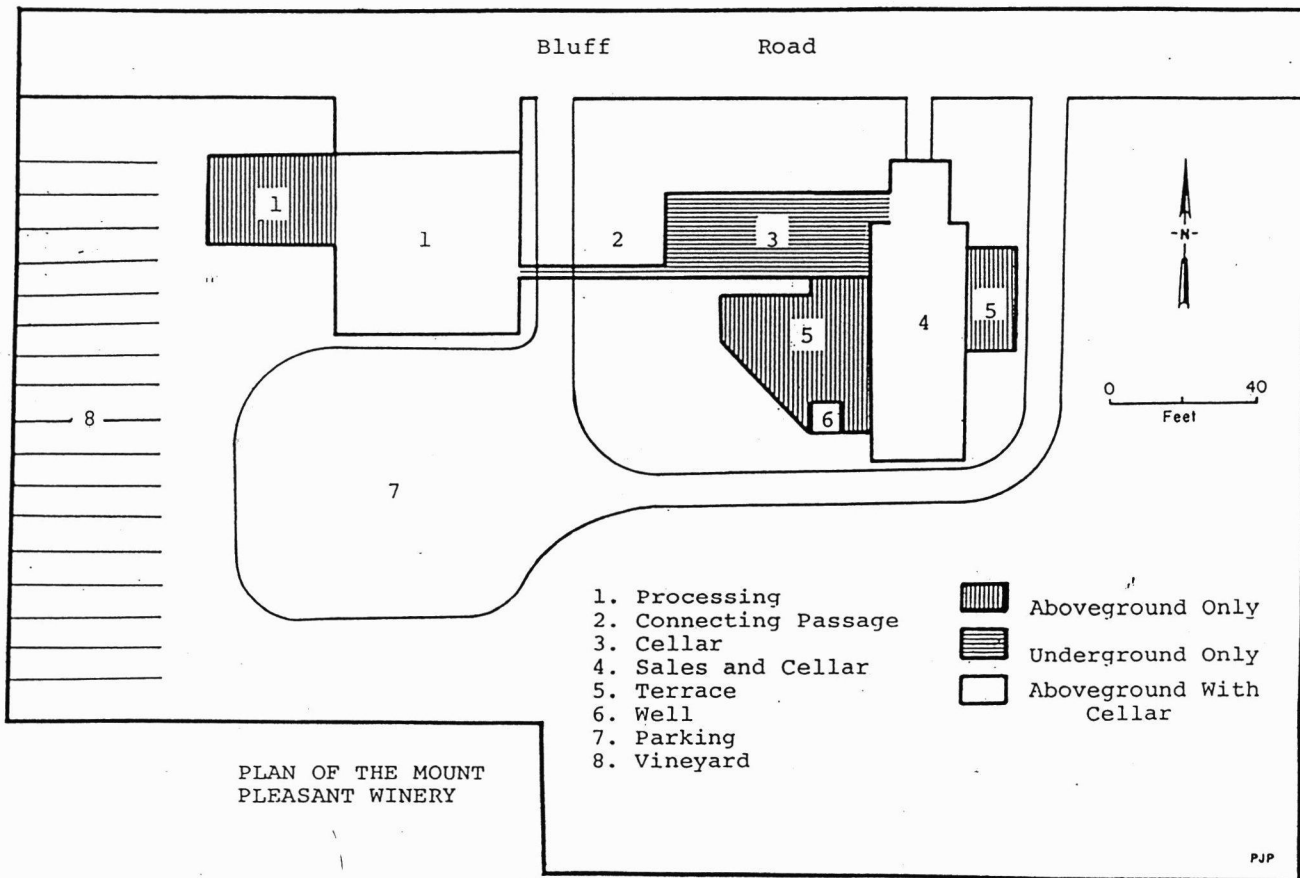


United States Department of the Interior
National Park Service

National Register of Historic Places
Continuation Sheet

Section number 7 Page 3 Mt. Pleasant Winery Historic District
St. Charles County, MO

FIG. 2

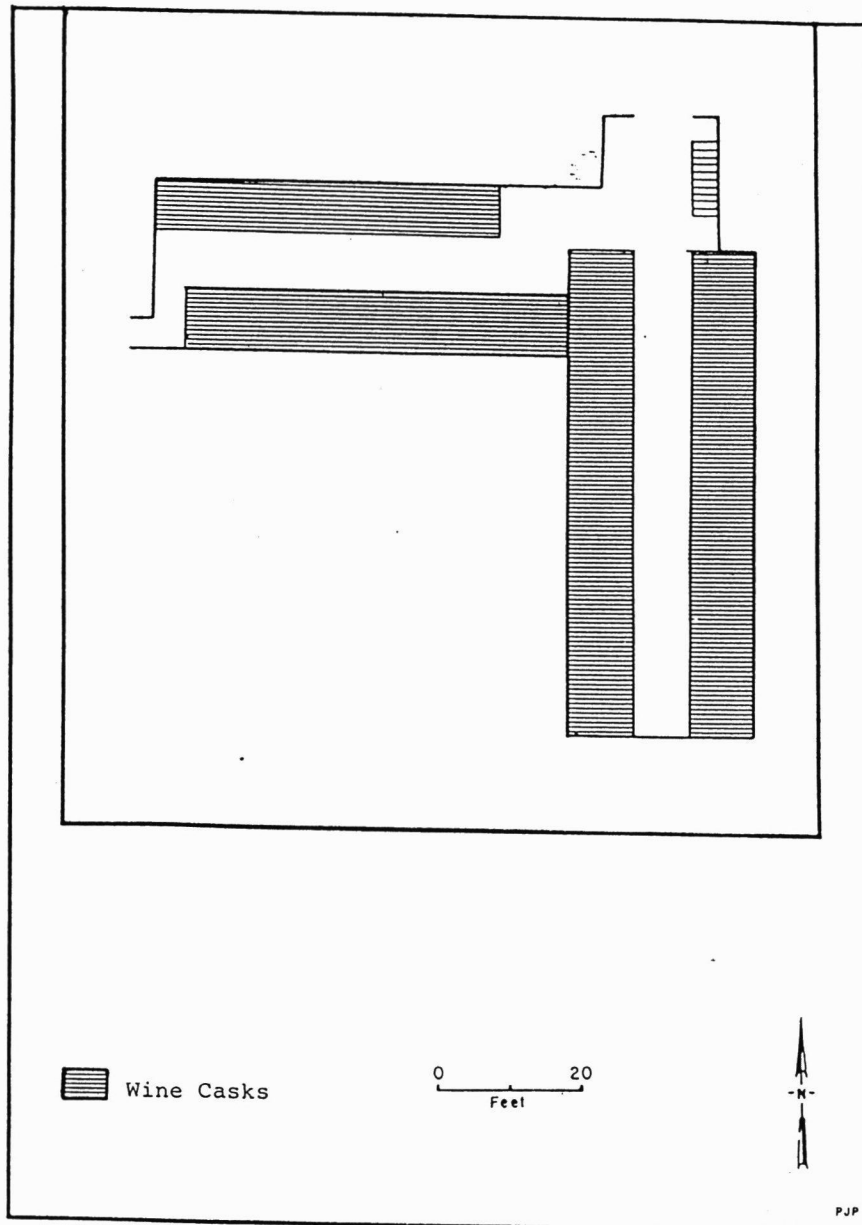


United States Department of the Interior
National Park Service

National Register of Historic Places Continuation Sheet

Section number 7 Page 4 Mt. Pleasant Winery Historic District
St. Charles County, MO

FIG. 3



PLAN OF THE CELLARS, MOUNT PLEASANT WINERY

Source: P.J. Poletti, Jr., "A Microgeography of Missouri Wine Production: The Mount Pleasant Winery, Augusta, Missouri" (Thesis, Southern Illinois University, 1982).

Mt. Pleasant Winery

Name of Property

St. Charles Co., MO

County and State

8. Statement of Significance

Applicable National Register Criteria

(Mark "x" in one or more boxes for the criteria qualifying the property for National Register listing.)

- Property is associated with events that have made a significant contribution to the broad patterns of our history.
Property is associated with the lives of persons significant in our past.
Property embodies the distinctive characteristics of a type, period, or method of construction or represents the work of a master, or possesses high artistic values, or represents a significant and distinguishable entity whose components lack individual distinction.
Property has yielded, or is likely to yield, information important in prehistory or history.

Criteria Considerations

(Mark "x" in all the boxes that apply.)

Property is:

- owned by a religious institution or used for religious purposes.
removed from its original location.
a birthplace or grave.
a cemetery.
a reconstructed building, object, or structure.
a commemorative property.
less than 50 years of age or achieved significance within the past 50 years.

Areas of Significance

(Enter categories from instructions)

ETHNIC HERITAGE: European

ARCHITECTURE

Period of Significance

ca. 1859-1917

Significant Dates

ca. 1859

ca. 1865-1881

Significant Person

(Complete if Criterion B is marked above)

n/a

Cultural Affiliation

n/a

Architect/Builder

unknown

Narrative Statement of Significance

(Explain the significance of the property on one or more continuation sheets.)

9. Major Bibliographical References

Bibliography

(Cite the books, articles, and other sources used in preparing this form on one or more continuation sheets.)

Previous documentation on file (NPS):

- preliminary determination of individual listing (36 CFR 67) has been requested
previously listed in the National Register
previously determined eligible by the National Register
designated a National Historic Landmark
recorded by Historic American Buildings Survey
recorded by Historic American Engineering Record

Primary location of additional data:

- State Historic Preservation Office
Other State agency
Federal agency
Local government
University
Other

Name of repository:

United States Department of the Interior
National Park ServiceNational Register of Historic Places
Continuation SheetSection number 8 Page 5 Mt.Pleasant Winery Historic District
St. Charles County, MO

The Mt.Pleasant Winery Historic District is eligible for listing in the National Register under Criteria A and C and is significant in the following areas: ETHNIC HERITAGE: EUROPEAN: Augusta's prominent wine industry, a major factor that gave the community its distinctive character, is closely associated with Missouri German cultural patterns. The Mt.Pleasant Winery was one of the leading wine producers in St.Charles County, and earned high recognition for quality of product at World Fairs in 1893 and 1904. German-born founder of Mt.Pleasant, George Muench, is a representative of a small group of educated liberal Germans who emigrated to Missouri in the 1830s and became influential leaders in the ethnic community. Muench's successful early efforts at commercial winemaking led other immigrants to viticulture.(See Historic Context, "German American Culture in Augusta,1833-1944", and subthemes, "Immigration and Settlement, ca.1830-1860", and "Wine Industry, ca.1850-1917". ARCHITECTURE: The ca.1859 George Muench house, (Property Type: Vernacular Residence) and 1881 brick winery with ca.1865 cellars,(Property Type: Commercial/Industrial Building) together with the outbuildings are distinguished by the quality of their Missouri German vernacular design and methods of construction (See historic context subtheme, "Architecture ca.1836-1943"). The winery is among a relatively few such properties surviving statewide which are associated with an industry in which Missouri achieved national distinction. The period of significance was terminated in 1917, the year the Prohibition Act was passed.

On October 22, 1859, George Muench of Warren County purchased the 6.5 acre tract on which the house and winery stand for \$900. In both the 1840 and 1850 censuses George was listed in Warren County close to his brother Friedrich who, in 1834, had led a group of German emigrants (the Giessen Society) there. In the 1850 census, George, 49, was reported engaged as a gunsmith, holding property valued at \$1000. The next census year, 1860, he was listed in St.Charles County (Augusta Post Office), born in Hesse Darmstadt, a gunmaker and winemaker. His family consisted of his wife Emma, 36, born in Hesse Darmstadt, and six children all born in Missouri: Albrecht, 22, merchant; Mallne, 18; Minna, 11; George, 6; Fritz, 4; and Louis, 11. The 1870 census reported George and three sons, Albrecht, George, and Fritz, all engaged as winegrowers.

Figures from the Federal Agricultural census for 1860, 1870 and 1880, and the 1868 Missouri State census illustrate the growth and success of the Muench winery. In 1860, Muench produced 400 gallons of wine on a farm of 40 improved acres and 80 unimproved, having a

United States Department of the Interior
National Park Service

**National Register of Historic Places
Continuation Sheet**

Section number 8,9 Page 6 Mt.Pleasant Winery Historic District
St. Charles County, MO

total value of \$2300; the 1868 state census reported 1500 gallons of wine; the 1870 census listed 1200 gallons; and the 1880 census reported 2400 gallons of wine sold in 1879, produced on 5 1/2 acres of vineyards, with a valuation of \$3000 placed on the farm and \$1300 on all farm products.

Following George Muench's death in 1879 his son, George, Jr., took over management of the winery. In 1885, a biographical sketch of George, Jr. stated that he had produced about 7000 gallons of wine the previous year, and that he sold principally to a Chicago firm.(1) The winery was active until Prohibition, after which the vineyards remained dormant until the late 1960s when Lucian Dressel, a native of the St.Louis area, reopened Mt.Pleasant Winery. Within about ten years, the winery was producing 25,000 to 30,000 gallons annually. In 1980, the town of Augusta and the surrounding area were designated the first official wine district in the nation, a status conferred by the U.S.Department of Treasury's Bureau of Alcohol, Tobacco & Firearms.

NOTES

- 1) History of St.Charles, Montgomery, and Warren Counties,
Missouri, (St.Louis: National Historical Co.,1885), p.255.

9. Major Bibliographic References

History of St. Charles, Montgomery, and Warren Counties, Missouri.
St. Louis: National Historical Company, 1885.

Mallinckrodt, Anita M. Historic Augusta, MO. Augusta, MO: Augusta
Historical Society, 1994.

(see Section I, "Historic Resources of Augusta, Missouri" MPS, for
additional references.)

Mt. Pleasant Winery
Name of Property

St. Charles Co., MO
County and State

10. Geographical Data

Acreage of Property less than one acre

UTM References

(Place additional UTM references on a continuation sheet.)

1

1	5
---	---

6	8	4	1	4	0
---	---	---	---	---	---

4	2	7	1	0	4	0
---	---	---	---	---	---	---

Zone Easting Northing

3

--	--	--	--	--	--	--	--	--	--

--	--	--	--	--	--	--	--	--	--

--	--	--	--	--	--	--	--	--	--

Zone Easting Northing

2

--	--	--	--	--	--	--	--	--	--

--	--	--	--	--	--	--	--	--	--

--	--	--	--	--	--	--	--	--	--

4

--	--	--	--	--	--	--	--	--	--

--	--	--	--	--	--	--	--	--	--

--	--	--	--	--	--	--	--	--	--

See continuation sheet

Verbal Boundary Description

(Describe the boundaries of the property on a continuation sheet.)

Boundary Justification

(Explain why the boundaries were selected on a continuation sheet.)

11. Form Prepared By

name/title Mary M. Stiritz

organization _____ date 5 January 1994

street & number 12 Wydown Terrace telephone 314 721 6289

city or town St. Louis state MO zip code 63105

Additional Documentation

Submit the following items with the completed form:

Continuation Sheets

Maps

A USGS map (7.5 or 15 minute series) indicating the property's location.

A Sketch map for historic districts and properties having large acreage or numerous resources.

Photographs

Representative black and white photographs of the property.

Additional Items

(Check with the SHPO or FPO for any additional items)

Property Owner

(Complete this item at the request of SHPO or FPO.)

name M P W, Inc.

street & number 231 Rock Industrial Drive telephone _____

city or town Bridgeton state MO zip code 63044

Paperwork Reduction Act Statement: This information is being collected for applications to the National Register of Historic Places to nominate properties for listing or determine eligibility for listing, to list properties, and to amend existing listings. Response to this request is required to obtain a benefit in accordance with the National Historic Preservation Act, as amended (16 U.S.C. 470 et seq.).

Estimated Burden Statement: Public reporting burden for this form is estimated to average 18.1 hours per response including time for reviewing instructions, gathering and maintaining data, and completing and reviewing the form. Direct comments regarding this burden estimate or any aspect of this form to the Chief, Administrative Services Division, National Park Service, P.O. Box 37127, Washington, DC 20013-7127; and the Office of Management and Budget, Paperwork Reduction Project (2690-0042), Washington, DC 20503.

United States Department of the Interior
National Park Service

National Register of Historic Places Continuation Sheet

Section number 10 Page 7 Mt. Pleasant Winery Historic District
St. Charles County, MO

10. Geographical Data

Verbal Boundary Description: District boundaries are indicated by the heavy broken line on the map entitled "Architectural Survey of Augusta," scale 1"=100'.

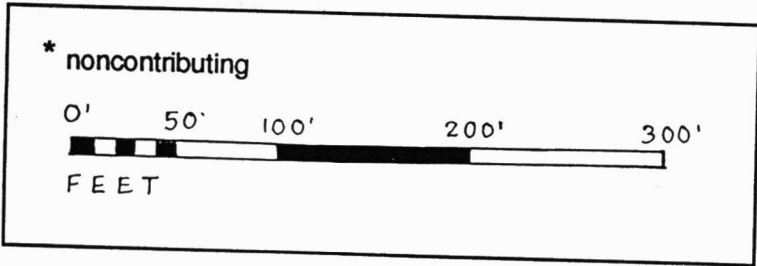
Boundary Justification: The boundaries were drawn to encompass the significant historic properties, including outbuildings, associated with the winery, and to exclude the noncontributing buildings of recent construction which stand directly west of the nominated buildings, all of which detract from the property's historic setting, as well as a parking lot which is directly west of the district.

United States Department of the Interior
National Park Service

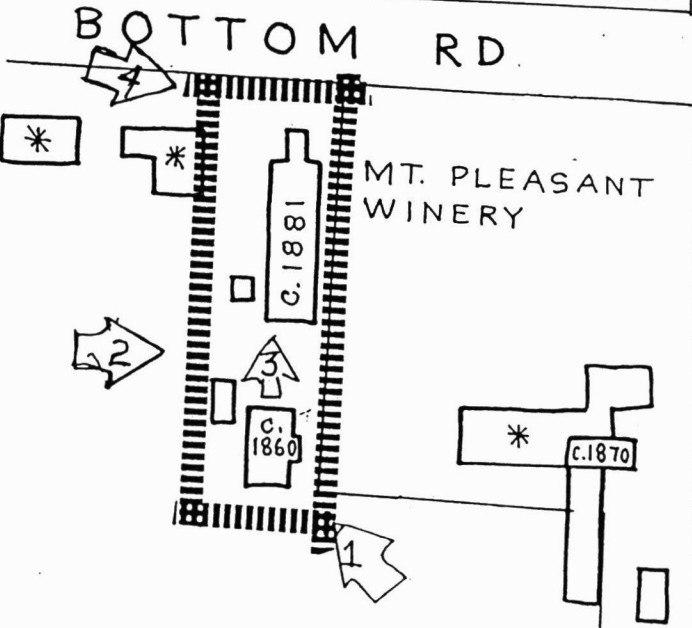
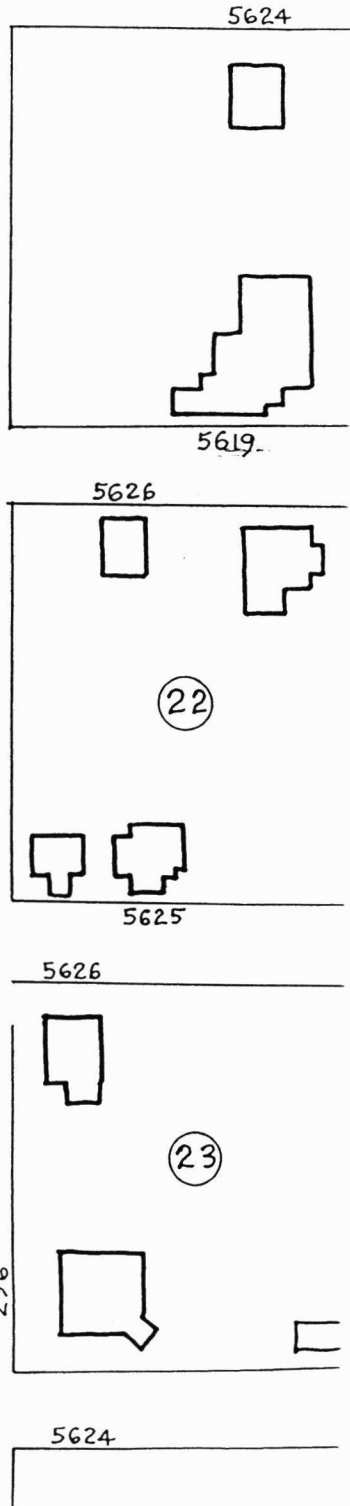
National Register of Historic Places Continuation Sheet

Section number 10 Page 8 Mt. Pleasant Winery Historic District
St. Charles County, MO

Architectural Survey of Augusta, Missouri
October 1991
Map by Pat Hays Baer



WEBSTER



C. 1860

United States Department of the Interior
National Park Service

National Register of Historic Places Continuation Sheet

Section number _____ Page _____

SUPPLEMENTARY LISTING RECORD

NRIS Reference Number: 94001144

Date Listed: 9/29/94

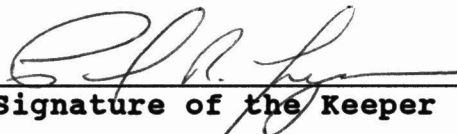
Mt. Pleasant Winery Historic District
Property Name

St. Charles
County

MO
State

Augusta MPS
Multiple Name

This property is listed in the National Register of Historic Places in accordance with the attached nomination documentation subject to the following exceptions, exclusions, or amendments, notwithstanding the National Park Service certification included in the nomination documentation.


Signature of the Keeper

9/29/94
Date of Action

=====
Amended Items in Nomination:

U.T.M.:
The correct UTM coordinates are: 15 684140 4271040.
The references listed on the form [Section 10] did not coincide with the references provided on the USGS map.

This information has been confirmed with Steven Mitchell of the MO SHPO.

DISTRIBUTION:
National Register property file
Nominating Authority (without nomination attachment)

UNITED STATES DEPARTMENT OF THE INTERIOR
NATIONAL PARK SERVICE

NATIONAL REGISTER OF HISTORIC PLACES
EVALUATION/RETURN SHEET

REQUESTED ACTION: NOMINATION

PROPERTY NAME: Mt. Pleasant Winery Historic District

MULTIPLE NAME: Augusta MPS

STATE & COUNTY: MISSOURI, St. Charles

DATE RECEIVED: 8/15/94 DATE OF PENDING LIST: 8/30/94
DATE OF 16TH DAY: 9/15/94 DATE OF 45TH DAY: 9/29/94
DATE OF WEEKLY LIST:

REFERENCE NUMBER: 94001144

NOMINATOR: STATE

REASONS FOR REVIEW:

APPEAL: N DATA PROBLEM: N LANDSCAPE: N LESS THAN 50 YEARS: N
OTHER: N PDIL: N PERIOD: N PROGRAM UNAPPROVED: N
REQUEST: N SAMPLE: N SLR DRAFT: Y NATIONAL: N

COMMENT WAIVER: N

ACCEPT RETURN REJECT 9/29/94 DATE

ABSTRACT/SUMMARY COMMENTS:

The Mt. Pleasant Winery Historic District is eligible under NR Criteria A and C (Ethnic Heritage-European, Architecture). This small complex of related buildings represents an intact collection of resources associated with one of Augusta's most dominant German enterprises, the wine industry. The well-preserved buildings reflect an important aspect of local German-ethnic heritage and also represent significant local examples of the vernacular building traditions associated with German settlement in the area during the nineteenth century.

RECOM./CRITERIA Accept A+C
REVIEWER PAUL R. KUSIONAN
DISCIPLINE HISTORIAN
DATE 9/29/94

DOCUMENTATION see attached comments Y/N see attached SLR (Y)/N

CLASSIFICATION

___ count ___ resource type

STATE/FEDERAL AGENCY CERTIFICATION

FUNCTION

___ historic ___ current

DESCRIPTION

___ architectural classification
___ materials
___ descriptive text

SIGNIFICANCE

Period Areas of Significance--Check and justify below

Specific dates Builder/Architect
Statement of Significance (in one paragraph)

- ___ summary paragraph
- ___ completeness
- ___ clarity
- ___ applicable criteria
- ___ justification of areas checked
- ___ relating significance to the resource context
- ___ relationship of integrity to significance
- ___ justification of exception
- ___ other

BIBLIOGRAPHY

GEOGRAPHICAL DATA

___ acreage ___ verbal boundary description
___ UTM's ___ boundary justification

ACCOMPANYING DOCUMENTATION/PRESENTATION

___ sketch maps ___ USGS maps ___ photographs ___ presentation

OTHER COMMENTS

Questions concerning this nomination may be directed to

_____ Phone _____

Signed _____ Date _____



- 1) MT. PLEASANT WINERY HISTORIC DISTRICT
- 2) AUGUSTA, ST. CHARLES COUNTY, MO
- 3) MARY STIRITZ
- 4) DEC. 1993
- 5) DEPT. NATURAL RESOURCES
JEFFERSON CITY, MO
- 6) SOUTH (primary) + EAST
FACADES, MUENCH HOUSE
CAMERA FACING NW
- 7) #1

11/05



- 1) MT. PLEASANT WINERY HISTORIC DISTRICT
- 2) AUGUSTA, ST. CHARLES COUNTY, MO
- 3) MARY STIRITZ
- 4) DEC. 1993
- 5) DEPT. NATURAL RESOURCES
JEFFERSON CITY, MO
- 6) West elev. MUENCH HOUSE (right)
CAMERA FACING EAST
- 7) #2

29784
3A



MOUNT PLEASANT

1881

THE
CHEESE
SHOPPE

- 1) (WINERY + WELLHOUSE)
MT. PLEASANT WINERY HISTORIC DISTRICT
- 2) AUGUSTA, ST. CHARLES COUNTY, MO
- 3) MARY STIRITZ
- 4) DEC. 1993
- 5) Dept. NATURAL RESOURCES
JEFFERSON CITY, MO
- 6) SOUTH ELEV. WINERY + WELLHOUSE
CAMERA FACING NORTH
- 7) #3

AD
29784

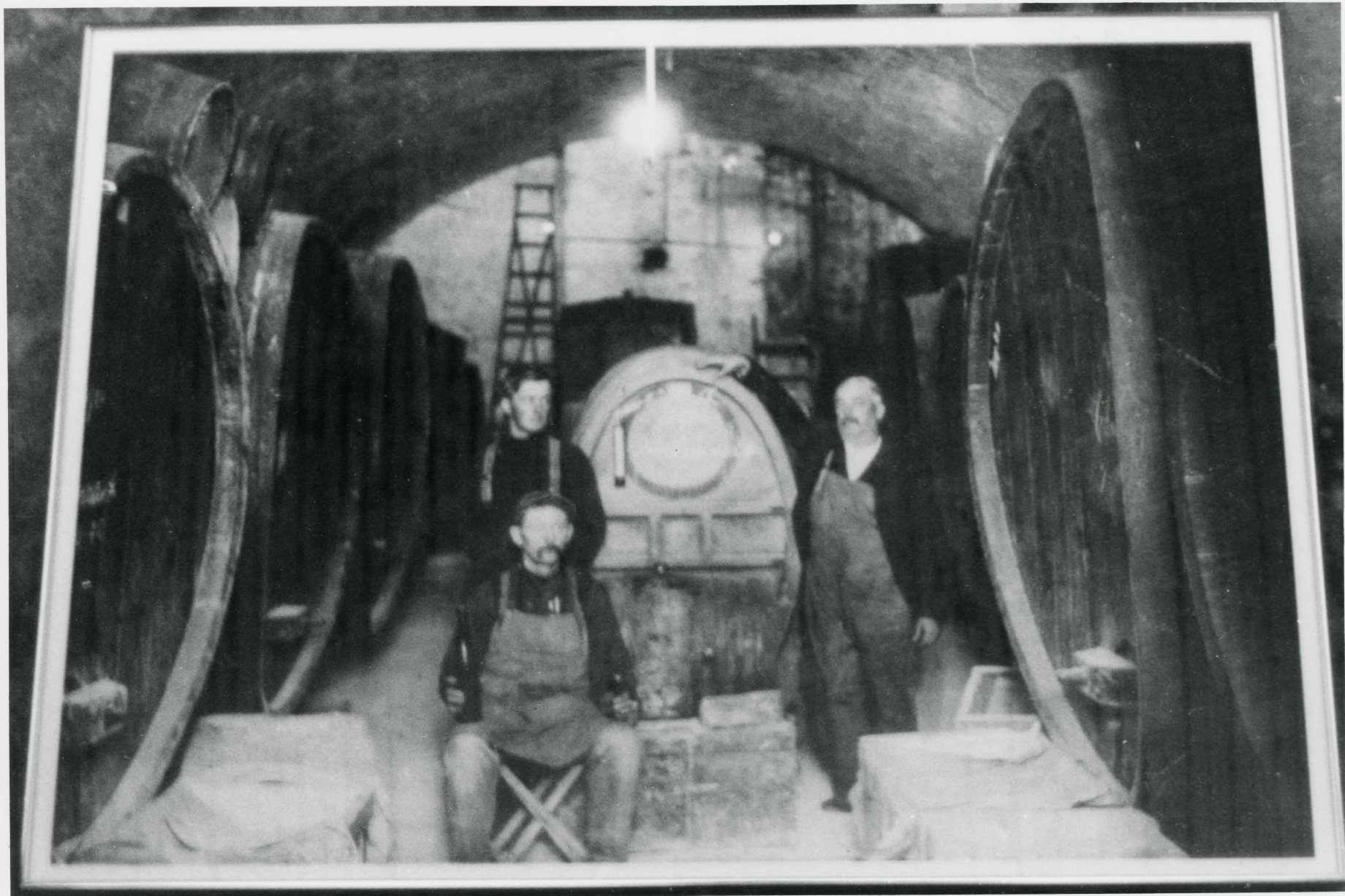


- 1) (WINERY) MT. PLEASANT WINERY HISTORIC DISTRICT
- 2) AUGUSTA, ST. CHARLES COUNTY, MO
- 3) MARY STIRITZ
- 4) DEC. 1993
- 5) DEPT. NATURAL RESOURCES
JEFFERSON CITY, MO
- 6) WEST ELEV., WINERY
CAMERA FACING EAST
- 7) #4

29784
80



- 1) (WINE CELLAR)
MT. PLEASANT WINERY HISTORIC DISTRICT
- 2) AUGUSTA, ST. CHARLES COUNTY, MO
- 3) MARY STIRITZ
- 4) DEC. 1993
- 5) DEPT. NATURAL RESOURCES
JEFFERSON, CITY, MO
- 6) WINE CELLAR
CAMERA FACING SOUTH
- 7) #5



- 1) (WINE CELLAR, HISTORIC PHOTO)
MT. PLEASANT WINERY HISTORIC DISTRICT
- 2) AUGUSTA, ST. CHARLES COUNTY, MO
- 3) UNKNOWN
(PHOTOCOPY, MARY STIRITZ)
- 4) ca. 1900
PHOTOCOPY 1993
- 5) DEPT. NATURAL RESOURCES
JEFFERSON CITY, MO
- 6) WINE CELLAR
CAMERA FACING NORTH
- 7) #6

4/2.5

Please refer to the map in the
Multiple Property Cover Sheet
for this property

Multiple Property Cover Sheet Reference Number: 64500296