

United States Department of the Interior
National Park Service

National Register of Historic Places
Inventory—Nomination Form

For NPS use only
received JUL 26 1984
date entered SEP 7 1984

See instructions in *How to Complete National Register Forms*
Type all entries—complete applicable sections

1. Name

historic Ferguson School-Central School

and/or common Central Elementary School

2. Location

street & number 201 Wesley Avenue

not for publication

city, town Ferguson

vicinity of

state Missouri

code 29

county St. Louis

code 189

3. Classification

Category

district
 building(s)
 structure
 site
 object

Ownership

public
 private
 both

Public Acquisition

in process
 being considered
 N/A

Status

occupied
 unoccupied
 work in progress

Accessible

yes: restricted
 yes: unrestricted
 no

Present Use

agriculture
 commercial
 educational
 entertainment
 government
 industrial
 military

museum
 park
 private residence
 religious
 scientific
 transportation
 other:

4. Owner of Property

name Ferguson-Florissant Reorganized School District

street & number 655 January

city, town Ferguson

vicinity of

state Missouri 63135

5. Location of Legal Description

courthouse, registry of deeds, etc. Recorder of Deeds, St. Louis County Government Center

street & number 41 South Central Avenue

city, town Clayton

state Missouri 63105

6. Representation in Existing Surveys

title 1. Historic Buildings in St. Louis Co. has this property been determined eligible? yes no

date 1983

federal state county local

depository for survey records published: St. Louis County Dept. of Parks and Recreation

city, town Clayton

state Missouri

7. Description

Condition

excellent

good

fair

deteriorated

ruins

unexposed

Check one

unaltered

altered

Check one

original site

moved date _____

Describe the present and original (if known) physical appearance

The core of Ferguson School-Central School is the original two-story brick schoolhouse built in 1877-80 (see floor plan). Additions built in 1895, 1904, 1908 and 1925-27 retain the flavor of the original through the repetition of similar scale, shapes, materials, and features (brick construction, limestone foundations, brick quoins, and wood cornice brackets).

The original schoolhouse sits on a foundation of coursed limestone rubble with dark mortar and is built of red brick laid in American common bond with brick quoins at the corners. An undated photograph shows that it originally may have had limestone quoins at the corners rather than brick (see photo 1). The building has a "T" floorplan with the foot of the "T" lying toward Clark Avenue (east). The foot of the "T" contains the stairwells, bell tower, entryway and the original facade. The facade of this first school building is today concealed by an addition built in 1904. The head of the "T" contains two rooms each on both the first and second floors. Originally the second floor was one large room that could be used for community meeting space. It was later divided by the installation of a permanent wall.

The building is covered by an asphalt-shingled gable roof which changes to a gambrel roof at the gable ends (north and south). The rear roof slope has a center gable which contains a covered circular window in the gable end. A smokestack is at the gable's peak and chimneys at the main roof peak are off-center towards the far north and far south. The cornice is supported by simple carved wood brackets. A bell tower consisting of a mansard roof topped by a frame square cupola rises from the roof. The cupola has a hip roof which has been altered slightly (see photos 1 and 2) by the removal of a pyramid from the roof peak.

The rear portion of the building is four bays across and two deep (see photo 2). Windows in the center bays are rectangular double-hung, one-over-one with transom windows above. These windows are matched by those of the 1904 addition. All other windows are rectangular double-hung, four-over-four. All windows have semi-circular arches and radiating voussoirs above and limestone sills.

In 1904, a two-story, rectangular addition containing four rooms was built east of the original building (see photo 3). This addition is also built of red brick laid in American common bond. It has brick quoins at the corners and sits on a coursed limestone rubble foundation with white mortar. It has an asphalt-shingled gable roof with a center gable on the east roof slope. This gable peak and a chimney on the main roof peak is offset towards the north. The cornice is supported by wood brackets like those of the original building.

The east facade of this addition is three bays wide with no fenestration in the center bay. The left and right bays contain four windows each on the first and second stories. These windows are rectangular double-hung, one-over-one, with transoms above. They have semi-circular arched frames, radiating voussoirs, and curved brick corbelling above. A concrete window sill runs along the bottom of each group of four windows. The basement level has an entrance in the left bay flanked by windows. The right bay

**United States Department of the Interior
National Park Service**

**National Register of Historic Places
Inventory—Nomination Form**

For NPS use only

received

date entered

Continuation sheet Ferguson School-Central School Item number 6

Page 1

2. Historic Sites Inventory
1980 regional
East-West Gateway Coordinating Council
St. Louis, Missouri

**United States Department of the Interior
National Park Service**

**National Register of Historic Places
Inventory—Nomination Form**

For NPS use only

received

date entered

Continuation sheet Ferguson School-Central School Item number 7 Page 1

contains three basement-level windows. At the east corner of the south facade of this addition is an entrance above grade. It consists of a two-panel door with glass divided into six lights in the upper half. A transom window above is boarded up.

In 1908, a two-story red brick addition was built to the south of the existing building. The main entrance was relocated to the Wesley Avenue facade (see photo 4). This addition is rectangular in shape with a two-story passageway with gable roof connecting the new to the old. The passageway has a first-floor entrance on the east side consisting of a set of two-panel double-leaf doors with six-light glass in upper half. The entrance is flanked by sidelights and a large semi-circular fanlight above. The addition itself has a hip roof with plain cornice and triangular attic vents at the peaks of the east and west roof slopes. Its brickwork consists of three rows of stretchers alternating with a row of headers. Brick quoins again occur at the corners. The foundation is concrete with a full basement below. The addition is three bays wide (south facade) and one bay deep. The center bay on the south contains the new entryway which projects from the main wall and is covered by a hip roof. The entrance consists of a set of two-panel double-leaf doors with six-light glass in upper half. The doors are framed by divided sidelights with a long top light above all. On the second floor above the entrance is a rectangular triple-hung, two-over-two-over-two window. The left bay contains a set of triple windows on each floor and the right bay five adjoining windows on each floor. All of these windows are rectangular, double-hung, three-over-three. The east facade has a set of triple windows on both the first and second floors which are rectangular, double-hung, two-over-two. The west facade on both the first and second floors have five adjoining rectangular, double-hung, three-over-three windows offset towards the south, and a single rectangular, double-hung, two-over-two window offset to the north. All windows have concrete sills.

In 1925-27, a final red brick addition consisting of four schoolrooms and a gym was built at the north end of the already existing structure (see photos 5 & 6). The rectangular schoolroom addition has a hip roof with plain cornice and triangular attic vents at the peaks of the east and west roof slopes. It is built of red brick laid in American common bond with brick quoins at the corners. It sits on a brick foundation and has a band of concrete between the basement and first floors. The east facade has five windows across on both the first and second stories. The basement has three sets of double windows. All windows are rectangular, double-hung, three-over-three with concrete sills. The south side has four staggered windows offset towards the left and running along an interior staircase. Three of these windows are rectangular, double-hung, two-over-two. The far right window is a rectangular, double-hung, three-over-three. A center below-grade entrance is on the south wall, and a set of double windows (three-over-three) is on the basement level off-center towards the far right.

**United States Department of the Interior
National Park Service**

**National Register of Historic Places
Inventory—Nomination Form**

For NPS use only

received

date entered

Continuation sheet Ferguson School-Central School Item number 7 Page 2

A two-story passageway with flat roof connects the gym, the schoolroom addition, and the older buildings. The first story of this passageway on the south facade contains two sets of double-leaf doors offset to the west with large semi-circular fanlights above. Access to the entrance is by a set of concrete steps. To the right of the entrance is a rectangular double-hung, six-over-six window. A red tile hip roof spans the facade windows, each of which is rectangular, double-hung, three-over-three with flat arches.

The gym has a gable roof and an exterior chimney stack at the east gable end offset towards the north. It is built of red brick laid in American common bond and sits on a brick foundation. It is eight bays long and two bays wide with brick pilasters separating each of the eight bays.

The grounds immediately around the building have been paved and are furnished with playground equipment and bicycle racks. To the east the grounds still slope down to Clark Avenue and remain wooded. Land to the west of the building is used for baseball fields. Most of the site is enclosed with a six-foot chain-link fence.

The entire complex is well-maintained and is still used as a public elementary school by the Ferguson-Florissant School District. The school district is considering a proposal to close and sell the school due to declining enrollments. The school is surrounded by residential areas and the land would be very attractive to residential developers.

8. Significance

Period	Areas of Significance—Check and justify below			
<input type="checkbox"/> prehistoric	<input type="checkbox"/> archeology-prehistoric	<input type="checkbox"/> community planning	<input type="checkbox"/> landscape architecture	<input type="checkbox"/> religion
<input type="checkbox"/> 1400-1499	<input type="checkbox"/> archeology-historic	<input type="checkbox"/> conservation	<input type="checkbox"/> law	<input type="checkbox"/> science
<input type="checkbox"/> 1500-1599	<input type="checkbox"/> agriculture	<input type="checkbox"/> economics	<input type="checkbox"/> literature	<input type="checkbox"/> sculpture
<input type="checkbox"/> 1600-1699	<input type="checkbox"/> architecture	<input checked="" type="checkbox"/> education	<input type="checkbox"/> military	<input type="checkbox"/> social/ humanitarian
<input type="checkbox"/> 1700-1799	<input type="checkbox"/> art	<input type="checkbox"/> engineering	<input type="checkbox"/> music	<input type="checkbox"/> theater
<input checked="" type="checkbox"/> 1800-1899	<input type="checkbox"/> commerce	<input type="checkbox"/> exploration/settlement	<input type="checkbox"/> philosophy	<input type="checkbox"/> transportation
<input checked="" type="checkbox"/> 1900-	<input type="checkbox"/> communications	<input type="checkbox"/> industry	<input type="checkbox"/> politics/government	<input type="checkbox"/> other (specify)
		<input type="checkbox"/> invention		

Specific dates 1877-80, 1903

Builder/Architect 1908 Addition - Wilbur Trueblood

Statement of Significance (in one paragraph)

Built as a grammar school building (grades 1-8) between 1877 and 1880, Ferguson School (later called Central School) is significant as an early focal point of Ferguson's EDUCATION, SOCIAL, and CULTURAL history and symbol of community pride. It is eligible for listing on the National Register of Historic Places under Criterion A. Dating from a time period when schools and churches in rural areas were the center of their community's social and cultural fabric, in addition to their education and religious function, the second floor of Ferguson School was a community facility or "meeting space" for those who lived in the vicinity of the Ferguson railroad depot. The lavish attention and expense spent on the building's construction (only three other masonry buildings existed in the area by that date) reflects Ferguson's civic pride and early concern for quality education. Expanded in 1903 to provide one of the first accredited four-year public high schools in St. Louis County, the building has been continuously used as a public school for over 100 years, maintaining its integrity of use. The original four room building remains intact as the core of the present elementary school with additions dating from 1895, 1904, 1908 and 1925-27.¹

The Ferguson Public School District was established in 1867 with the opening of a one-room school at the southwest corner of Wesley Avenue and North Florissant. This building was later expanded by one room and moved to 110 S. Clark where it is in use as a residence today.² Due to continually enlarging enrollments, the trustees of Ferguson Public School District #3 (John R. Hereford, Charles J. January, and Sebert W. Hutchinson) purchased two and a half acres on May 25, 1877, from Amanda L. DeVol, widow of Tillinghast DeVol, for \$1,000, with the intention of building a new school.³ The proposed school site formed the southeast corner of the DeVol property.

According to J. Thomas Scharf's History of St. Louis City and County, "In 1877-78 a brick building was erected for a public school. It has two schoolrooms on the first floor, and in the second story a hall, which is to be divided into schoolrooms as future exigencies require. The cost of the building was fifty-six thousand dollars."⁴ The building may not have been completed until 1880, however, as a master's thesis written by Berkley Kalin in 1960 quotes minutes of an April 13, 1888 meeting of School Directors as stating the building was built in 1880 at a cost of \$5,600, a more likely construction cost.⁵ Minutes of School Directors Meetings prior to the 1950's no longer exist. The architect and builder of the building are unknown. The school bell, which is still rung twice daily, has stamped on its side "Rumsey Manufacturing Co., St. Louis, Mo.-1883." L.M. Rumsey & Co., established in 1865 and located in the 800 block of N. Main St. in St. Louis, manufactured pumps, fire engines, lead pipes, and fillings, plumbers and steam fitter's brass and iron goods.⁶

State of Missouri
Department of Education

9. Major Bibliographical References

1. Ferguson-Florissant School District, ed. History of Ferguson. Ferguson, Missouri: Ferguson-Florissant School District, 1975. Copy available at Ferguson Public Library, 108 Church St., Ferguson, Missouri.

10. Geographical Data

Acree of nominated property 2.5 acres

Quadrangle name "Clayton, Mo."

Quadrangle scale 1:24,000

UTM References

A

1	5	7	3	3	9	8	0	4	2	9	1	4	7	1	0
Zone		Easting				Northing									

B

Zone		Easting				Northing									

C

Zone		Easting				Northing									

D

Zone		Easting				Northing									

E

Zone		Easting				Northing									

F

Zone		Easting				Northing									

G

Zone		Easting				Northing									

H

Zone		Easting				Northing									

Verbal boundary description and justification Central School is located in Survey 2476 occupying the northwest corner of the intersection of Clark Avenue and Wesley Avenue. It fronts 237.65' on Clark and 490.88' on Wesley. Its western boundary is 230.70' and its northern boundary is 409.07'.

List all states and counties for properties overlapping state or county boundaries

state Missouri code 29 county St. Louis code 189

state code county code

11. Form Prepared By

name/title ^{1.} Beverly Fleming, Researcher

organization St. Louis Co. Dept. of Parks & Recreation date December, 1983

street & number 41 South Central telephone (314) 889-3357

city or town Clayton state Missouri 63105

12. State Historic Preservation Officer Certification

The evaluated significance of this property within the state is:

national state local

As the designated State Historic Preservation Officer for the National Historic Preservation Act of 1966 (Public Law 89-665), I hereby nominate this property for inclusion in the National Register and certify that it has been evaluated according to the criteria and procedures set forth by the National Park Service.

State Historic Preservation Officer signature

Fred A. Lafser

Fred A. Lafser, Director and State Historic Preservation Officer, Department of Natural Resources

date

7/11/84

For NPS use only

I hereby certify that this property is included in the National Register

Entered in the National Register

date

9/7/84

Keeper of the National Register

Attest:

date

Chief of Registration

**United States Department of the Interior
National Park Service**

**National Register of Historic Places
Inventory—Nomination Form**

For NPS use only

received

date entered

Continuation sheet Ferguson School-Central School Item number 8 Page 1

The second story hall was used for plays, dinners, dances and other community events. Due to increasing enrollment, the school's second floor was later permanently divided into two rooms. An essay written by Edward R. Schmidt, who moved to Ferguson in 1887, further describes the facilities at Ferguson School during this period:

"In 1892, I started to school in the four room brick building on Clark Avenue, only eight grades. At that time each room was heated by a large pot-bellied stove. The drinking water was contained in two cedar buckets, one for the boys and one for the girls. The buckets were on benches on the west side of the building under a lean-to that protected the water from flying leaves and dust. Each bucket was provided with a long-handled tin dipper. The water came from a near-by cistern and was raised by a tall iron pump. The back yard was divided by a wooden fence and the front yard was divided by a long wooden walk from the front entrance of the building to the steps at Clark Avenue. North of the dividers was the girls' side and south was the boys' side.

There were toilet facilities on each side near the rear of the lot and protected by a long wooden shed. Also, on the boys' side was a wooden shelter for the protection of horses or ponies that brought pupils who had come a long distance."⁷

Kalin's review of the minutes from School Director's Meetings determined that in 1895 an addition was made to the school at a cost of \$4,750.00.⁸ The extent of this addition is unclear, as no description exists and no other references to it have been found.

In 1895 Ferguson School had a total of 115 students. In this year a proposal for a two-year high school course by principal John A. Miller is recorded in the minutes.⁹ By 1896 Ferguson had such a program. The program was expanded until 1903, when a four-year public high school program was established. Kirkwood had established the first four-year high school program in St. Louis County in 1896, with Webster Groves following in 1897. Neither of these high school buildings remain today.¹⁰

In 1904 four rooms were added east of the original four rooms, and in 1908 four rooms were added to the south. The main entrance was relocated to the Wesley Avenue (south) facade there it remains today. A building permit issued July 1, 1908 identifies Webber F. Trueblood as architect and George S. McClinton as a contractor and builder for this latter addition. The permit gives a value of \$14,764 for the brick addition.¹¹ Probably the name "Webber" is a misprint which actually refers to architect Wilbur T. Trueblood. He was educated in the New York office of McKim, Meade & White and the Ecole des Beaux Arts, Paris, and was at one time in partnership with Theodore Link. Among buildings which he designed were Carpenter Library, additions to Barnes Hospital, Webster Groves City Hall, University City High School, and several buildings at Central College in Fayette, Missouri. Trueblood was chief architectural supervisor of the Federal Housing Administration for Eastern Missouri and Missouri Director of the Historic Building Survey in the 1930's.¹²

**United States Department of the Interior
National Park Service**

**National Register of Historic Places
Inventory—Nomination Form**

For NPS use only
received
date entered

Continuation sheet Ferguson School-Central School Item number 8 Page 2

According to William L. Thomas' History of St. Louis County, a free kindergarten was started in connection with the Ferguson Public School in 1911, although Scharf mentions a kindergarten school being kept in the village in 1883.

A final addition was added to the north of the school building in 1925-27.

With the construction of John M. Vogt High School in 1931, the school building at 201 Wesley became an elementary school (grades 1-6) and acquired the name of Central School. Prior to this time the school building was known simply as Ferguson School and later as Ferguson High School. The county directory lists the school as Ferguson Central in 1932 and by 1934 simply Central School. ¹⁴

NOTES

1. Construction dates for additions built in 1904 and 1925-27 are based on an oral history tradition. No Ferguson school records, tax records or building permits exist from this time period. The building does not have a cornerstone. Newspaper accounts from this period are not indexed.
2. Irene Sanford Smith, Ferguson-A City and Its People (Ferguson, Mo.: Ferguson Historical Society, 1976), p. 37.
3. St. Louis County Recorder of Deeds, Book 8, page 155.
4. J. Thomas Scharf, History of St. Louis City and County (Philadelphia: Louis H. Everts and Company, 1883), Vol. II, p. 1897.
5. Berkley Kalin, "A History of Ferguson, Missouri 1855-1918" (unpublished master's thesis, St. Louis University, 1960), p. 47.
6. Camille N. Dry & Richard J. Compton, Pictorial St. Louis (St. Louis, 1875), p. 75.
7. Edward R. Schmidt, "Ferguson...As I Knew It", History of Ferguson (compiled by Ferguson-Florissant School District, 1975), p. 157-158.
8. Kalin, p. 52.
9. Ibid.
10. Board Minutes-School District of Webster Groves-summer, 1897; June Wilkinson Dahl, A History of Kirkwood, Missouri (Kirkwood, Missouri: Kirkwood Historical Society, 1965), p. 135; William L. Thomas, History of St. Louis County (St. Louis: S.J. Clarke, 1911), Vol. 1, p. 119-137.

**United States Department of the Interior
National Park Service**

**National Register of Historic Places
Inventory—Nomination Form**

For NPS use only

received

date entered

Continuation sheet Ferguson School-Central School Item number 8

Page 3

11. Daily Record, July 1, 1908, p. 3. Permit #1616.
12. "Wilbur T. Trueblood Dies After Operation," May 24, 1937, Necrology files of Missouri Historical Society, Vol. XIX, p. 10.
13. William L. Thomas, History of St. Louis County (St. Louis: S.J. Clarke, 1911), Vol. 1, p. 292; Scharf, p. 1897.
14. St. Louis County Directories, 1922, 1930, 1932, 1934.

**United States Department of the Interior
National Park Service**

**National Register of Historic Places
Inventory—Nomination Form**

For NPS use only

received

date entered

Continuation sheet Ferguson School-Central School **Item number** 9 **Page** 1

2. Historical information compiled by Ferguson-Florissant School District for Central School Centennial Celebration, May 16, 1980. Copies available at Central Elementary School, 201 Wesley, Ferguson, Missouri.
3. Kalin, Berkley. "A History of Ferguson, Missouri 1855-1918." Unpublished master's thesis, St. Louis University, 1960, p. 44-55. Copy available at Ferguson Public Library, 108 Church St., Ferguson, Missouri.
4. Scharf, J. Thomas. History of St. Louis City and County. Philadelphia: Louis H. Everts and Company, 1883, Vol. II, p. 1897.
5. Smith, Irene Sanford. Ferguson-A City and Its People. Ferguson, Missouri: Ferguson Historical Society, 1976, p. 36-40.
6. Thomas, William L. History of St. Louis County. St. Louis: S.J. Clarke, 1911, Vol. I, pp. 119-137 and 292-293.

**United States Department of the Interior
National Park Service**

**National Register of Historic Places
Inventory—Nomination Form**

For NPS use only

received

date entered

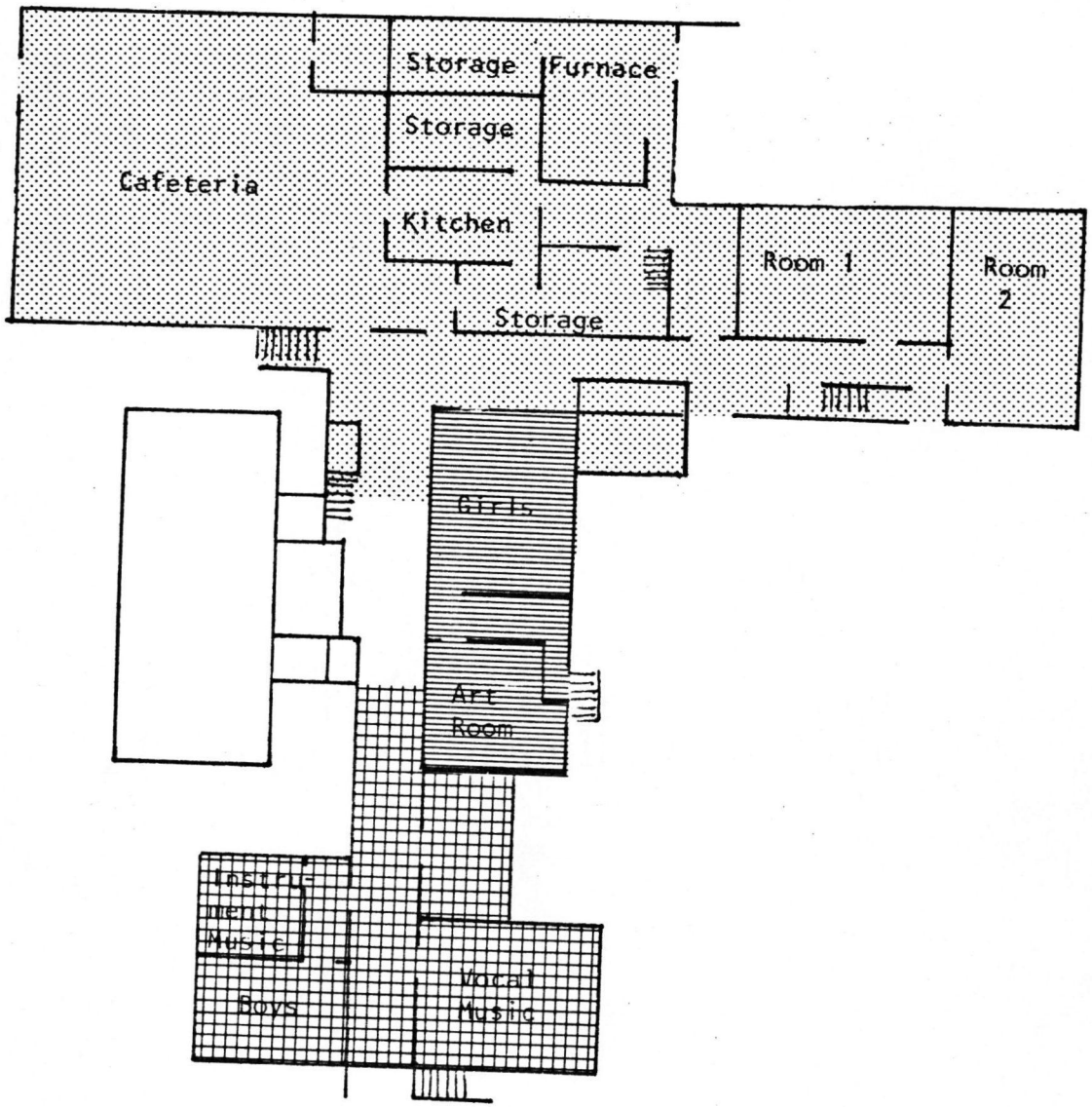
Continuation sheet Ferguson School-
Central School

Item number 11

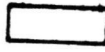

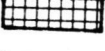

Page 1

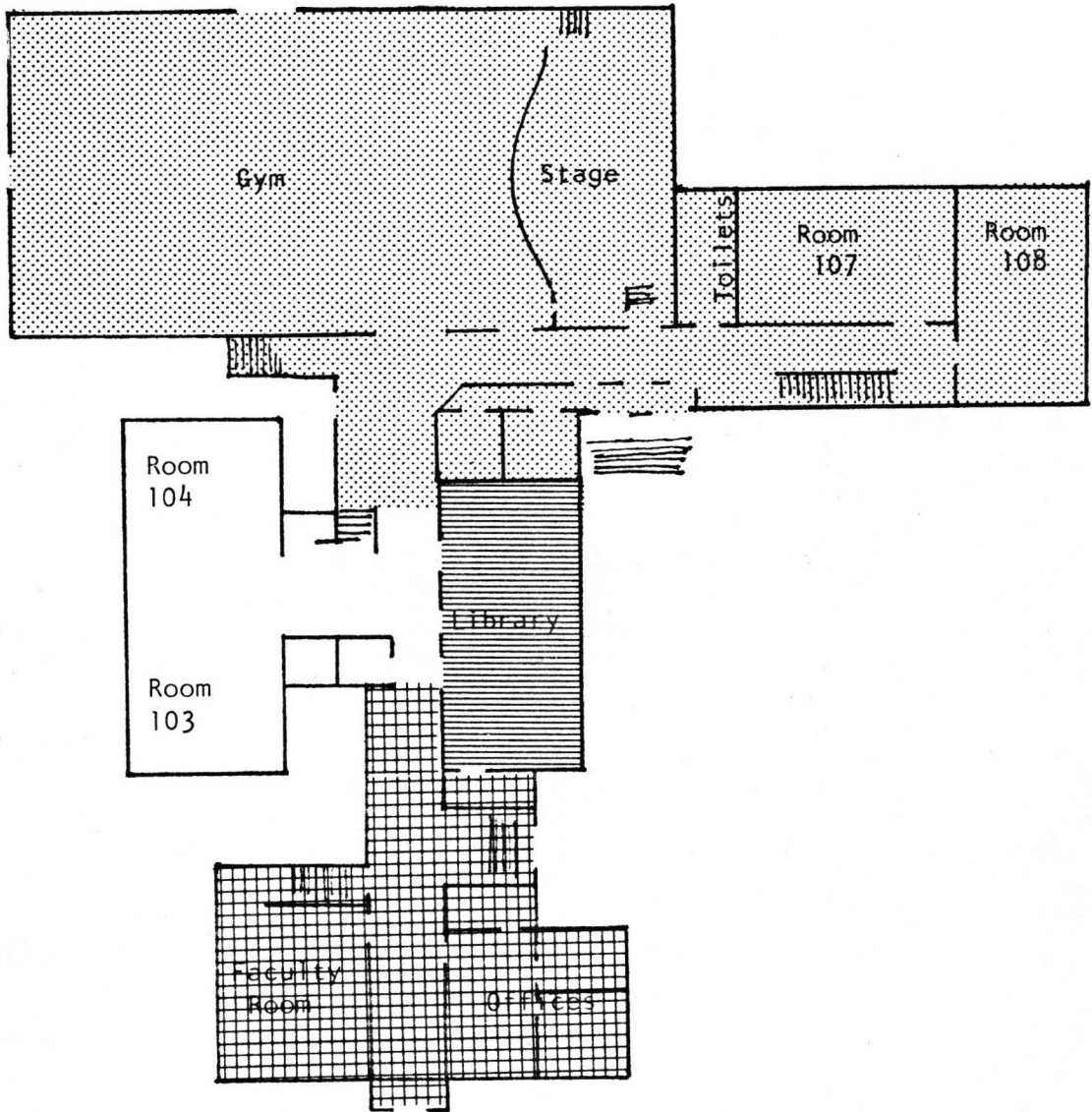
2. Jim Denny, Chief, Survey and Registration
and State Contact Person
Department of Natural Resources
P.O. Box 176
Jefferson City

December, 1983
(314) 751-4096
Missouri 65102


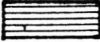
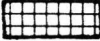
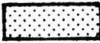


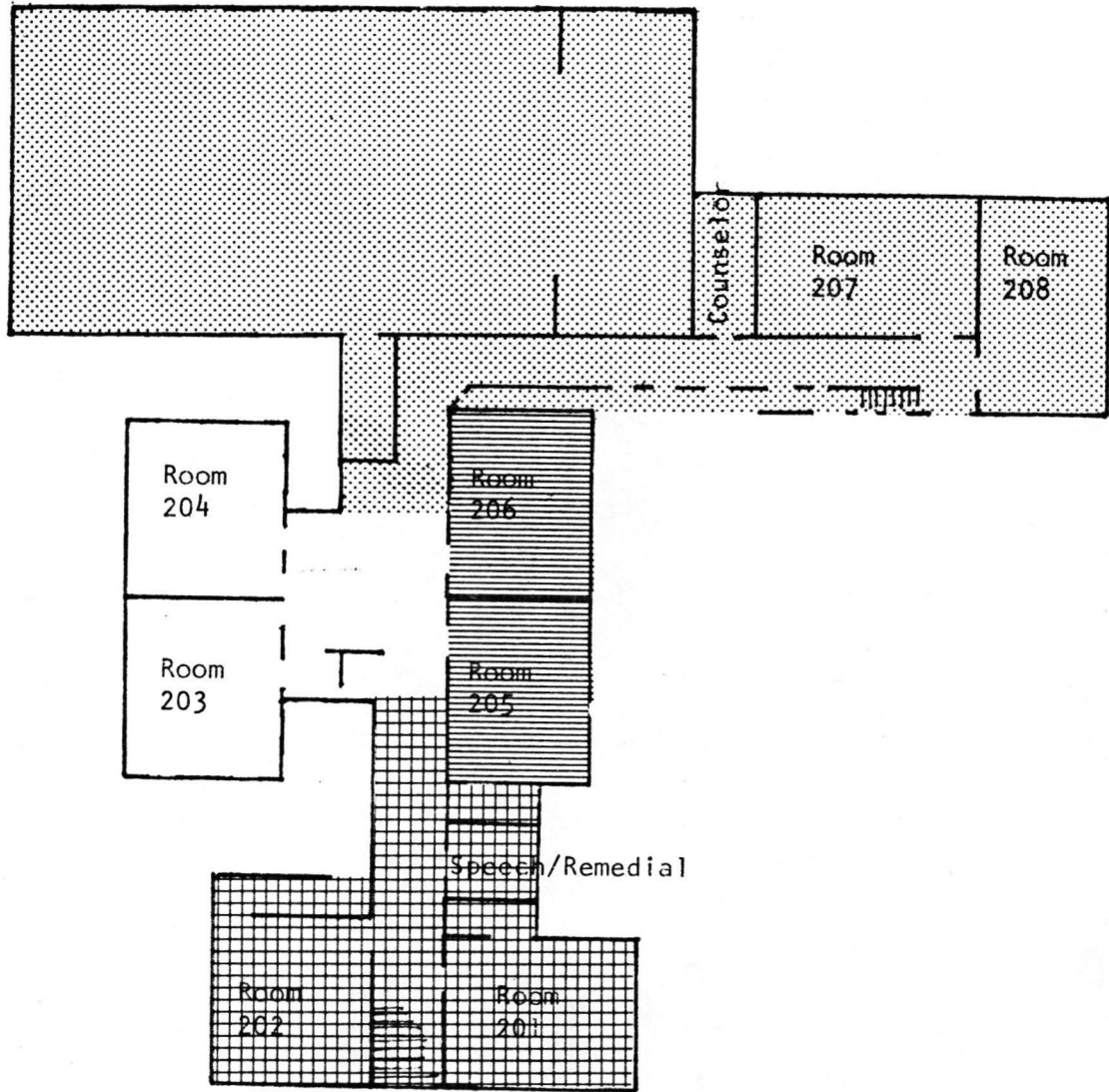
Floorplan - Ferguson School-Central School
Basement

-  1877-80 Original Building
-  1904 Addition
-  1908 Addition
-  1925-27 Addition & Gym

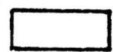

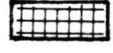



Floorplan - Ferguson School-Central School
1st floor

-  1877-80 Original Building
-  1904 Addition
-  1908 Addition
-  1925-27 Addition & Gym



Floorplan - Ferguson School-Central School
2nd floor

-  1877-80 Original Building
-  1904 Addition
-  1908 Addition
-  1925-27 Addition & Gym

NATIONAL REGISTER OF HISTORIC PLACES
EVALUATION/RETURN SHEET

Ferguson School-Central School
St. Louis County
MISSOURI

Working No. JUL 26 1984

Fed. Reg. Date: 2.5.85

Date Due: 9/6/84 - 9/9/84

Action: ACCEPT 9-7-84

RETURN

REJECT

Entered in the
National Register

Federal Agency: _____

- resubmission
- nomination by person or local government
- owner objection
- appeal

Substantive Review: sample request appeal NR decision

Reviewer's comments:

Recom./Criteria _____

Reviewer _____

Discipline _____

Date _____

_____ see continuation sheet

Nomination returned for: _____ technical corrections cited below
_____ substantive reasons discussed below

1. Name

2. Location

3. Classification

Category	Ownership	Status	Present Use
	Public Acquisition	Accessible	

4. Owner of Property

5. Location of Legal Description

6. Representation in Existing Surveys

Has this property been determined eligible? yes no

7. Description

Condition

- excellent
- good
- fair
- deteriorated
- ruins
- unexposed

Check one

- unaltered
- altered

Check one

- original site
- moved date _____

Describe the present and original (if known) physical appearance

- summary paragraph
- completeness
- clarity
- alterations/integrity
- dates
- boundary selection

8. Significance

Period - Areas of Significance--Check and justify below

Specific dates _____ Builder/Architect _____

Statement of Significance (*in one paragraph*)

- summary paragraph
- completeness
- clarity
- applicable criteria
- justification of areas checked
- relating significance to the resource
- context
- relationship of integrity to significance
- justification of exception
- other

9. Major Bibliographical References

10. Geographical Data

Acreage of nominated property _____

Quadrangle name _____

UTM References _____

Verbal boundary description and justification _____

11. Form Prepared By

12. State Historic Preservation Officer Certification

The evaluated significance of this property within the state is:

____ national ____ state ____ local

State Historic Preservation Officer signature _____

title _____ date _____

13. Other

- Maps
- Photographs
- Other

Questions concerning this nomination may be directed to _____

Signed _____ Date _____ Phone: _____



FERGUSON SCHOOL-CENTRAL SCHOOL 1 of 6
201 Wesley Avenue
Ferguson, Missouri
Photog.: Unknown, date unknown
Neg.Loc.: Ferguson Historical Society

View of historic east facade



FERGUSON SCHOOL-CENTRAL SCHOOL 2 of 6
201 Wesley Avenue
Ferguson, Missouri
Photog.: Esley Hamilton, 1982
Neg.Loc.: St. Louis Co. Dept. of Parks & Rec.
41 S. Central
Clayton, Missouri 63105

View of west facade



FERGUSON SCHOOL-CENTRAL SCHOOL 3 of 6

201 Wesley Avenue
Ferguson, Missouri

Photog.: Esley Hamilton, 1982

Neg.Loc.: St. Louis Co. Dept. of Parks & Rec.
41 S. Central
Clayton, Missouri 63105

View of east facade



CENTRAL

SCHOOL

FERGUSON SCHOOL-CENTRAL SCHOOL 4 of 6
201 Wesley Avenue
Ferguson, Missouri
Photog.: Vera Jean Bass, 1984
Neg.Loc.: St. Louis Co. Parks & Recreation
41 S. Central
Clayton MO 63105

View of 1908 addition (south facade)



FERGUSON SCHOOL-CENTRAL SCHOOL 5 of 6

201 Wesley Avenue

Ferguson, Missouri

Photog.: Vera Jean Bass, 1984

Neg.Loc.: St. Louis Co. Parks & Recreation

41 S. Central

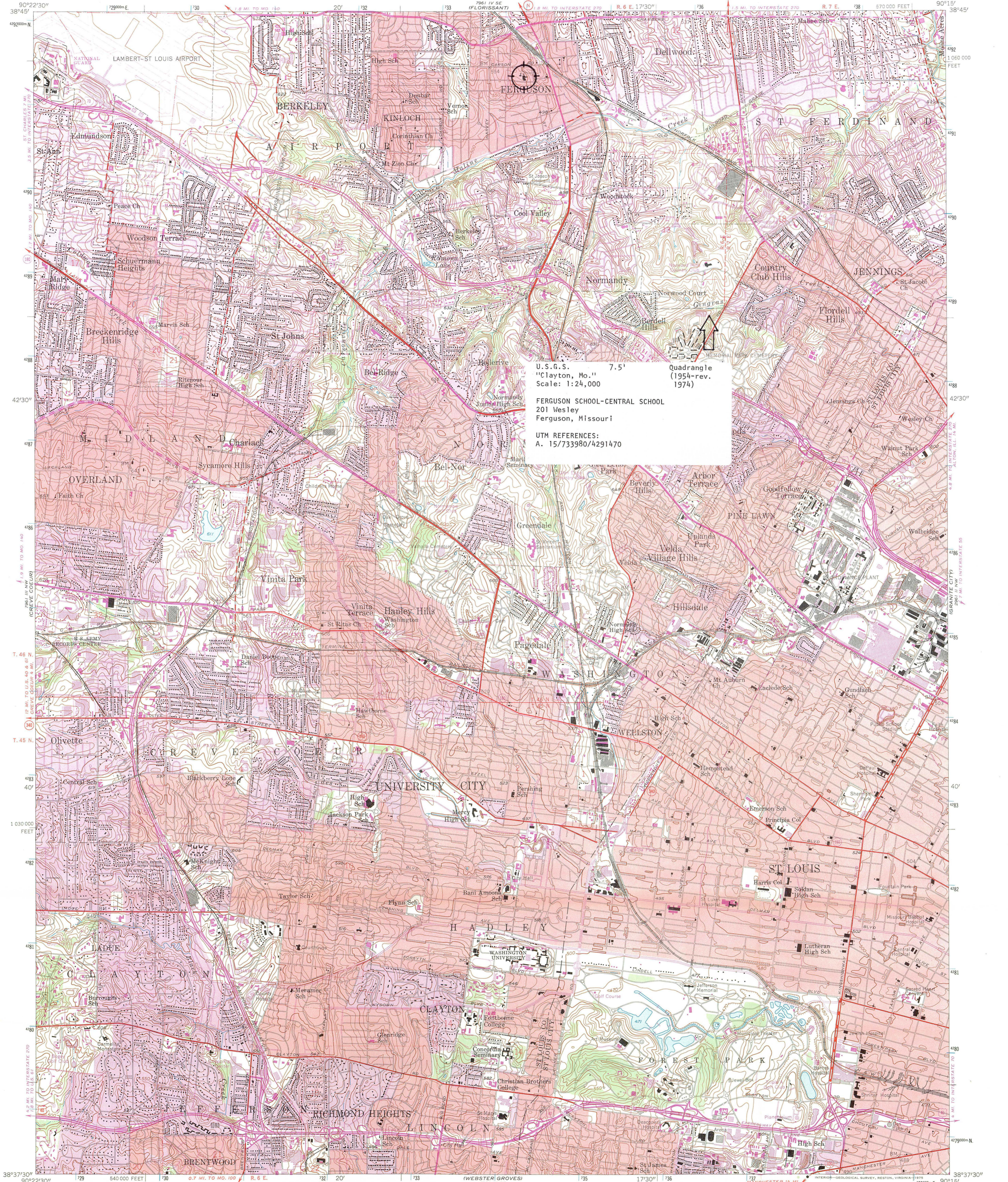
Clayton MO 63105

View of 1925-27 addition (south facade)



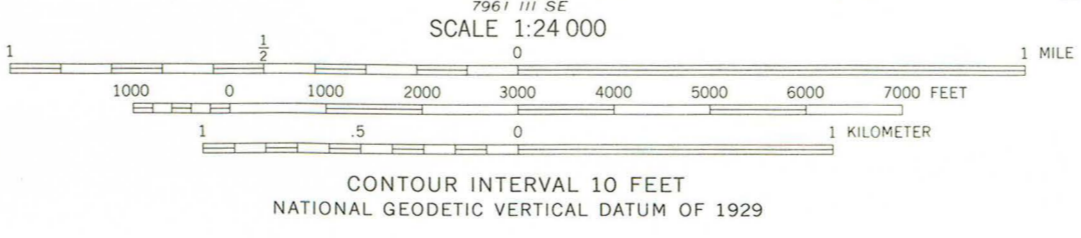
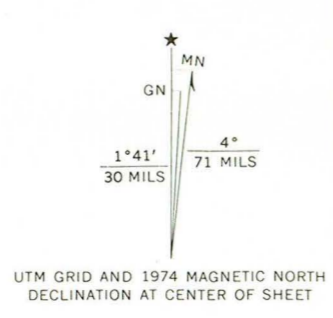
FERGUSON SCHOOL-CENTRAL SCHOOL 6 of 6
201 Wesley Avenue
Ferguson, Missouri
Photog.: Vera Jean Bass, 1984
Neg.Loc.: St. Louis Co. Parks & Recreation
41 S. Central
Clayton MO 63105

View of Gym (view from northeast)



U. S. G. S. 7.5' Quadrangle (1954-rev. 1974)
Scale: 1:24,000
FERGUSON SCHOOL-CENTRAL SCHOOL
201 Wesley
Ferguson, Missouri
UTM REFERENCES:
A. 15/733980/4291470

Mapped by the Geological Survey
Revised by the Army Map Service
Published for civil use by the Geological Survey
Control by USGS and USC&GS
Topography from planetable surveys by the Geological Survey 1933
Planimetric detail revised from aerial photographs taken 1952
Field check 1953-1954
Polyconic projection. 1927 North American datum
10,000-foot grid based on Missouri coordinate system, east zone
1000-meter Universal Transverse Mercator grid ticks, zone 15,
shown in blue
Red tint indicates areas in which only landmark buildings are shown

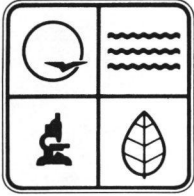


THIS MAP COMPLIES WITH NATIONAL MAP ACCURACY STANDARDS
FOR SALE BY U. S. GEOLOGICAL SURVEY, DENVER, COLORADO 80225, OR RESTON, VIRGINIA 22092
AND BY THE DIVISION OF RESEARCH AND TECHNICAL INFORMATION
MISSOURI DEPARTMENT OF NATURAL RESOURCES, ROLLA, MISSOURI 65401
A FOLDER DESCRIBING TOPOGRAPHIC MAPS AND SYMBOLS IS AVAILABLE ON REQUEST

Revisions shown in purple compiled by the Geological Survey from aerial photographs taken 1968 and 1974
This information not field checked
Purple tint indicates extension of urban areas

CLAYTON, MO.
N 3837.5 - W 9015/7.5

1954
PHOTOREVISED 1968 AND 1974
AMS 7961 III NE - SERIES V879



July 16, 1984

MISSOURI DEPARTMENT OF NATURAL RESOURCES
P.O. Box 176 Jefferson City, Missouri 65102 (314) 751-2479

Ms. Carol Shull
National Register Branch
Interagency Resources Division
National Park Service
1100 L Street, Room 6209

Dear Carol:

Enclosed please find the following submissions from Missouri for nomination to the National Register of Historic Places.

Ferguson School-Central School
Ferguson, Missouri

Church Street Commercial
District
Ferguson, Missouri

These nominations were approved by our State Review Board, the Missouri Advisory Council on Historic Preservation, on June 28, 1984, and have been signed by Missouri's State Historic Preservation Officer, Fred A. Lafser. All owners and appropriate elected public officials were notified and provided forty-five (45) days to comment on the above proposed nominations in accordance with Section 60.6 (c) 36CFR60, interim regulations, using the exact notification format recommended by the National Register. No objections, notarized or otherwise, were received for the above referenced nominations.

If there are any questions concerning these submissions, please contact James M. Denny of my staff at 314/751-4096.

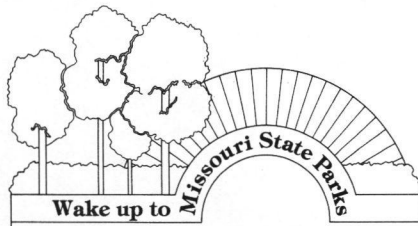
Sincerely,

DIVISION OF PARKS & HISTORIC PRESERVATION

B. H. Rucker
Assistant Director

BHR:kb

Enclosures



Christopher S. Bond Governor
Fred A. Lafser Director

Division of Parks and Historic Preservation
John Karel Director