

UNITED STATES DEPARTMENT OF THE INTERIOR
NATIONAL PARK SERVICE

FOR NPS USE ONLY

RECEIVED **AUG 27 1979**

OCT 11 1979

DATE ENTERED

**NATIONAL REGISTER OF HISTORIC PLACES
INVENTORY -- NOMINATION FORM**

SEE INSTRUCTIONS IN *HOW TO COMPLETE NATIONAL REGISTER FORMS*
TYPE ALL ENTRIES -- COMPLETE APPLICABLE SECTIONS

1 NAME

HISTORIC Ray County Court House

AND/OR COMMON

2 LOCATION

STREET & NUMBER off MO 10 and MO 13

CITY, TOWN

Richmond

VICINITY OF

#6 Honorable Thomas Coleman

STATE

Missouri

29

CODE

64085

COUNTY

Ray

CODE

177

— NOT FOR PUBLICATION

CONGRESSIONAL DISTRICT

3 CLASSIFICATION

CATEGORY

- DISTRICT
- BUILDING(S)
- STRUCTURE
- SITE
- OBJECT

OWNERSHIP

- PUBLIC
- PRIVATE
- BOTH
- PUBLIC ACQUISITION**
- IN PROCESS
- BEING CONSIDERED

STATUS

- OCCUPIED
- UNOCCUPIED
- WORK IN PROGRESS
- ACCESSIBLE**
- YES: RESTRICTED
- YES: UNRESTRICTED
- NO

PRESENT USE

- AGRICULTURE
- COMMERICAL
- EDUCATIONAL
- GOVERNMENT
- INDUSTRIAL
- MILITARY
- MUSEUM
- PARK
- PRIVATE RESIDENCE
- RELIGIOUS
- SCIENTIFIC
- TRANSPORTATION
- OTHER:

4 OWNER OF PROPERTY

NAME

Ray County Court

STREET & NUMBER

CITY, TOWN

Richmond

VICINITY OF

STATE

Missouri 64085

5 LOCATION OF LEGAL DESCRIPTION

COURTHOUSE,
REGISTRY OF DEEDS, ETC.

Ray County Court House, Office of Assessor

STREET & NUMBER

CITY, TOWN

Richmond

STATE

Missouri 64085

6 REPRESENTATION IN EXISTING SURVEYS

TITLE

Missouri State Historical Survey

DATE

1979

— FEDERAL STATE — COUNTY — LOCAL

DEPOSITORY FOR
SURVEY RECORDS

Office of Historic Preservation

CITY, TOWN

Jefferson City

STATE

Missouri 65102

7 DESCRIPTION

CONDITION		CHECK ONE	CHECK ONE
<input checked="" type="checkbox"/> EXCELLENT	<input type="checkbox"/> DETERIORATED	<input checked="" type="checkbox"/> UNALTERED	<input checked="" type="checkbox"/> ORIGINAL SITE
<input type="checkbox"/> GOOD	<input type="checkbox"/> RUINS	<input type="checkbox"/> ALTERED	<input type="checkbox"/> MOVED DATE _____
<input type="checkbox"/> FAIR	<input type="checkbox"/> UNEXPOSED		

DESCRIBE THE PRESENT AND ORIGINAL (IF KNOWN) PHYSICAL APPEARANCE

The Ray County Court House sits in the center of the square in Richmond's business district. The square is slightly above grade. The three-story stone structure fronts on four streets. It has a frontage of eighty feet on College Street on the west and Thornton Street on the east. It has a frontage of one hundred feet on North Main Street on the north and Main Street on the south. The Neo-Classical building occupies 9,000 square feet of ground area.¹ It is surrounded by landscaped lawns on all four sides.

Construction materials and colors

The building is constructed of Bedford limestone. Metal framed windows and doors are used throughout the structure. A full basement runs under the building. The roof, supported by steel roof trusses, is covered with terra cotta tile.² A chimney is located at the northwest corner of the building.

East and west facades

The east and west facades are identical. A ground story level, of rusticated ashlar finish, features a projecting bay. Double entrance doors are recessed in this bay behind large piers on which the paired colossal columns supporting the pediment rest. An ornamental light fixture is attached to each pier. Bays 2 and 4 are recessed slightly, and bays 1 and 5 are recessed even further. On the second and third floors, of dressed stone, the central bay features paired Ionic columns supporting a plain pediment. A clock face is located in the center of each pediment. The entablature contains the inscription "Obedience to Law is Liberty." Paired windows are located between the Ionic columns on both the second and third floors. A balustraded rail forms a balcony area on the second floor between the columns. Bays 2 and 4, slightly set back, contain a window on each level. Bays 1 and 5, recessed further, also contain a window on each level, recessed slightly behind colossal pilasters. The entablature above bays 1, 2, 4, and 5 is unadorned. A balustraded roof line is featured above bays 1 and 5, while a parapet roof is located above bays 2, 3, and 4.

North and south facades

The features of the north and south facades are identical to the east and west facades with one exception. The north and south facades are seven bays in width instead of five, with an additional window at the end of each facade, enframed by pilasters.

Interior

The four entrances to the building, from each facade, lead to a spacious central lobby on the first floor. An atrium over the lobby area opens the area between the first and second floors. Stairs flanking the north entrance lead to the upper floors. The interior features tile floors and marble wainscotting. The second floor consists of office space ringing the atrium. The third floor is devoted to the Circuit Court Room.

FOR HCRS USE ONLY

RECEIVED AUG 27 1979

DATE ENTERED

OCT 21 1979

NATIONAL REGISTER OF HISTORIC PLACES INVENTORY -- NOMINATION FORM

RAY COUNTY COURTHOUSE

CONTINUATION SHEET

ITEM NUMBER 7

PAGE 1

Alterations

The building has been spared major alterations. The metal framed windows and doors are recent replacements.

Condition

The building appears to be in excellent condition on both the exterior and interior.

Site

Commercial structures are located to the east, west, north, and south. The Court House sits above grade, surrounded by landscaped lawns. A monument to General Alexander W. Doniphan sits on the west lawn and a monument to World War veterans sits on the east lawn.

Present Status

The building is still in use as the Ray County Court House.

FOOTNOTES

1. "Court House Bid Accepted by Court," Richmond Conservator, 7 May 1914, p. 6; John Blumenson, Identifying American Architecture (Nashville: American Association for State and Local History, 1977), p. 68.
2. "Court House Bid," Richmond Conservator, 7 May 1914, p. 6.

SIGNIFICANCE

PERIOD

AREAS OF SIGNIFICANCE -- CHECK AND JUSTIFY BELOW

<input type="checkbox"/> PREHISTORIC	<input type="checkbox"/> ARCHEOLOGY-PREHISTORIC	<input checked="" type="checkbox"/> COMMUNITY PLANNING	<input type="checkbox"/> LANDSCAPE ARCHITECTURE	<input type="checkbox"/> RELIGION
<input type="checkbox"/> 1400-1499	<input type="checkbox"/> ARCHEOLOGY-HISTORIC	<input type="checkbox"/> CONSERVATION	<input checked="" type="checkbox"/> LAW	<input type="checkbox"/> SCIENCE
<input type="checkbox"/> 1500-1599	<input type="checkbox"/> AGRICULTURE	<input type="checkbox"/> ECONOMICS	<input type="checkbox"/> LITERATURE	<input type="checkbox"/> SCULPTURE
<input type="checkbox"/> 1600-1699	<input checked="" type="checkbox"/> ARCHITECTURE	<input type="checkbox"/> EDUCATION	<input type="checkbox"/> MILITARY	<input type="checkbox"/> SOCIAL/HUMANITARIAN
<input type="checkbox"/> 1700-1799	<input type="checkbox"/> ART	<input type="checkbox"/> ENGINEERING	<input type="checkbox"/> MUSIC	<input type="checkbox"/> THEATER
<input type="checkbox"/> 1800-1899	<input type="checkbox"/> COMMERCE	<input type="checkbox"/> EXPLORATION/SETTLEMENT	<input type="checkbox"/> PHILOSOPHY	<input type="checkbox"/> TRANSPORTATION
<input checked="" type="checkbox"/> 1900-	<input type="checkbox"/> COMMUNICATIONS	<input type="checkbox"/> INDUSTRY	<input checked="" type="checkbox"/> POLITICS/GOVERNMENT	<input type="checkbox"/> OTHER (SPECIFY)
		<input type="checkbox"/> INVENTION		

SPECIFIC DATES 1914/15

BUILDER/ARCHITECT

Warren Roberts

STATEMENT OF SIGNIFICANCE

The site of the Ray County Court House has a long history as the civic center of the county and the city of Richmond. The court house of 1850 was located at the same spot. The present court house, constructed in 1914/1915 is typical of court house design of its era and at the time of its construction was the largest construction project undertaken in Ray County.

History of Ray County Government

Ray County is almost as old as the state of Missouri. Originally Ray County encompassed what has since been divided into eight counties. It was organized as a separate county from territory taken from Howard County by an act of the Missouri legislature, effective on January 1, 1821. The county was named for John Ray, a delegate from Howard County to the state constitutional convention held in St. Louis.¹ The first temporary seat of justice for Ray County was in Bluffton, where the first session of the county court convened on January 1, 1821. At one of its first sessions, the court named a commission to determine a location for a permanent county seat at a more central point in the county. Six years later, in October 1827, the commissioners approved a plat of the farms of John Wollard, William B. Martin, Isaac Thornton, and William Thornton as a site for a county seat. The site was divided into 100 lots which were sold to the public on October 25, 1827. The new county seat was called Richmond, named after the capital of Virginia, from where many of the early settlers came. The first court house erected for the county was a log structure, built in 1829. In 1850 it was replaced by a more impressive brick and stone court house costing \$50,000.²

During the period 1904-1910 approximately ten Missouri counties authorized the construction of new court houses replacing small, inexpensive and often inadequate structures with magnificent and costly buildings.³ The court house served symbolically to represent the quality of the county and there was undoubtedly some sense of competition in the building of these structures. In 1901 the Richmond Conservator, commenting on the new Carroll County Court House, noted that Ray County was out of debt and in need of a new court house also, "...but when we do build, we should make it a \$75,000 structure."⁴

On December 6, 1913, the county approved by a large majority a bond issue for the construction of a new court house.⁵ In January, 1914, the county court studied the various plans submitted for the structure and narrowed the field to five competitors - Eckel and Aldrich of St. Joseph; Rea and Lovitt of Kansas City, Missouri; Rose and Peterson of Kansas City, Kansas; Sameman and Goold of Kansas City, Missouri; and R. Warren Roberts of

9 MAJOR BIBLIOGRAPHICAL REFERENCES

- "Action Must be Taken on Court House Clock," Richmond Conservator, 15 October 1914, p. 1.
- "At the Court House." Richmond Conservator, 8 January 1914, p. 1. 15 January 1914, p. 1; 12 February 1914, p. 1; 19 March 1914, p. 1; 3 September 1914, p. 4; 8 October 1914, p. 1. continued:

10 GEOGRAPHICAL DATA

ACREAGE OF NOMINATED PROPERTY less than 1 acre

UTM NOT VERIFIED

QUADRANGLE NAME "Richmond, Mo."

QUADRANGLE SCALE 1:24,000

UTM REFERENCES

A	15	415740	4347970	B			
	ZONE	EASTING	NORTHING		ZONE	EASTING	NORTHING
C				D			
E				F			
G				H			

VERBAL BOUNDARY DESCRIPTION

Center Part Old Survey

LIST ALL STATES AND COUNTIES FOR PROPERTIES OVERLAPPING STATE OR COUNTY BOUNDARIES

STATE	CODE	COUNTY	CODE
STATE	CODE	COUNTY	CODE

11 FORM PREPARED BY

NAME / TITLE

Sherry Piland

May 12, 1979

ORGANIZATION

Architectural Historian

DATE

STREET & NUMBER

4346 Charlotte

TELEPHONE

(816) 753-5746

CITY OR TOWN

Kansas City

STATE

MO

12 STATE HISTORIC PRESERVATION OFFICER CERTIFICATION

THE EVALUATED SIGNIFICANCE OF THIS PROPERTY WITHIN THE STATE IS:

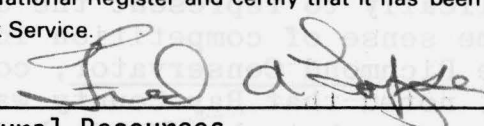
NATIONAL

STATE

LOCAL

As the designated State Historic Preservation Officer for the National Historic Preservation Act of 1966 (Public Law 89-665), I hereby nominate this property for inclusion in the National Register and certify that it has been evaluated according to the criteria and procedures set forth by the National Park Service.

STATE HISTORIC PRESERVATION OFFICER SIGNATURE



TITLE Director, Department of Natural Resources and State Historic Preservation Officer

DATE

August 17, 1979

FOR NPS USE ONLY

I HEREBY CERTIFY THAT THIS PROPERTY IS INCLUDED IN THE NATIONAL REGISTER

Carol Shull
KEEPER OF THE NATIONAL REGISTER

DATE

10-11-79

ATTEST: *William H. Brannan*
CHIEF OF REGISTRATION

DATE

10-11-79

**NATIONAL REGISTER OF HISTORIC PLACES
INVENTORY -- NOMINATION FORM**

FOR HCRS USE ONLY

RECEIVED AUG 27 1979

DATE ENTERED

OCT 11 1979

RAY COUNTY COURTHOUSE

CONTINUATION SHEET

ITEM NUMBER 8

PAGE 1

Chillicothe. Roberts was the eventual winner of the competition.⁶ Mr. Renne, a Kansas City contractor and specialist in moving buildings was hired to move the old court house and recorder's office. Moving the court house was the largest building moved in Richmond up to that time.⁷ It was relocated on a lot on South College Street where it served many more useful years as the headquarters for the Coal Miners Union. Later it was converted into apartments and was eventually demolished in the 1960's.⁸

An indication of the civic pride evoked by the new court house is evident in two gala events associated with the new building. The cornerstone dedication was held September 19, 1914. The Mason's were in charge of the ceremony with Grand Master Van F. Boor presiding. Other lodges and labor organizations were also participants. A parade preceded the formal ceremonies. Following the parade, Richmond Mayor Clarence H. Hubbell made a short speech on behalf of the city. Prosecuting Attorney Albert M. Clark then spoke, recounting the history of the previous court houses. The main orator of the day was Dr. C. H. Briggs of Sedalia, who spoke about the history of the Masonic fraternity as a workingman's guild. The ladies of the Eastern Star then served a dinner at the Elk's Club rooms, with music furnished by local musicians. The cornerstone is a massive block of Missouri granite quarried in Iron County and weighing almost 4,000 pounds. A number of papers and documents dealing with the Masonic orders, Ray County history, and Richmond church history were placed in a copper box and deposited in the cornerstone.⁹

Construction of the building began in earnest after the cornerstone ceremonies. It was the largest building project undertaken by the county and required 11,000 box car loads of material.¹⁰ By October, 1914, the first tier of stone was in place. A large derrick, over seventy feet high was erected in the center of the structure to raise the stones (some weighing over 10 tons) in place. After its use, the derrick was sawed into sections and removed from the building.¹¹

In October, 1914, the Richmond Conservator began lobbying for a clock for the court house, an item that had been omitted from the plans. The county court finally came up with the necessary \$800 for installation of a clock dial in each facade, run by electricity.¹²

The second event associated with the building was the dedication held on November 20, 1915. The ceremonies again began with a parade, featuring the Henrietta and Richmond bands. A number of business houses around the court house were decorated with flags and bunting. The completed court house was decorated with flowers at the windows, corners of the rooms, and hanging from the electric light fixtures. After the ceremonies the flowers were distributed to the sick and to the County Home. Numerous speakers held forth in the third floor Circuit Court room. Among the orators were Judge George Lavelock, Judge Thomas K. Kirkpatrick, Lieutenant Governor William Painter of Carrollton, and Senator James A. Reed of Kansas City. In the evening a dance was held on the first floor accompanied by orchestra music.¹³

**NATIONAL REGISTER OF HISTORIC PLACES
INVENTORY -- NOMINATION FORM**

FOR HCRS USE ONLY	
RECEIVED	AUG 27 1979
DATE ENTERED	OCT 11 1979

RAY COUNTY COURTHOUSE

CONTINUATION SHEET

ITEM NUMBER 8

PAGE 2

Since its dedication, the court house has continually served as the governmental center of Ray County. In 1919, Judge Frank Devilbiss, who was a speaker at the dedication, was fatally stabbed in the Court House by Robert Lyon, editor of the Richmond Conservator. Claiming self defense, Lyon was acquitted in a sensational trial at the Court House.¹⁴

Warren Roberts

Warren Roberts, architect of the Ray County Court House, was born September 26, 1881. He graduated from the University of Missouri in 1910 - returning later to earn a Masters degree, assist in football coaching, and to teach in the Engineering School. He served on the Mexican border in 1916 and in France during the First World War. He died in an automobile accident in Chillicothe at the age of 69 in 1950. Roberts was the architect of several Chillicothe buildings including the City Hall, Court House, high school, and Christian Church.¹⁵

The survey of Missouri's historic sites is based on the selection of sites as they relate to theme studies in Missouri history as outlined in "Missouri's State Historic Preservation Plan." The Ray County Court House is, therefore, being nominated to the National Register of Historic Places as an example of the themes of "Architecture," "Political Affairs," and "Urban Design."

FOOTNOTES

1. "Made Many Counties," Kansas City Star, 13 December 1904, p. 6.
2. "The Pride of 100 Years of Progress Sweeps Over Richmond, Mo." Kansas City Star, 23 October 1927, pp. 1-2, sec. c; History of Ray County, Missouri (St. Louis: Missouri Historical Company, 1881), pp. 218-231 and 383-385.
3. Robertus Love, "Richmond," St. Louis Republic, 28 November, 1915.
4. "Carroll County's New Court House," Richmond Conservator, 9 May 1901, p. 1.
5. "Court House Bonds Ordered Registered," Richmond Conservator, 9 July 1914, p. 33; "Large Crowd Visited Richmond Saturday to Witness Court House Opening and to Hear the Speaking," Richmond Conservator, 25 November 1915, p. 1.
6. "At the Court House," Richmond Conservator, 8 January 1914, p. 1 and 15 January 1914, p. 1.
7. "At the Court House," Richmond Conservator, 12 February 1914, p. 1 and 19 March 1914, p. 1.

**NATIONAL REGISTER OF HISTORIC PLACES
INVENTORY -- NOMINATION FORM**

FOR HCRS USE ONLY

RECEIVED AUG 27 1979

DATE ENTERED

OCT 11 1979

RAY COUNTY COURTHOUSE

CONTINUATION SHEET

ITEM NUMBER 8 PAGE 3

8. Ray County, Missouri History 1973 (Richmond: Ray County Historical Society, 1973), pp. 16-17.
9. "With Imposing Ceremonies Corner Stone of Ray County's New \$100,000 Court House is Laid by Masonic Fraternity," Richmond Conservator, 24 September 1914, pp. 1 and 6.
10. "At the Court House," Richmond Conservator, 3 September 1914, p. 4.
11. "At the Court House," Richmond Conservator, 8 October 1914, p. 1.
12. "Let's Get the Court House Clock," Richmond Conservator, 8 October 1914, p. 1; "Action Must Be Taken on Court House Clock," Richmond Conservator, 15 October 1914, p. 1; "Court House Clock is Now Assured Fact," Richmond Conservator, 22 October 1914, p. 1.
13. "Large Crowd Visited Richmond," Richmond Conservator, 25 November 1915, p. 1.
14. "Block Burns in Richmond, Mo.," Weekly Kansas City Star, 5 December 1923, p. 1.
15. "Road Accident Kills Warren Roberts, Injures Dr. Grace," Chillicothe Constitution-Tribune, 2 November 1950, p. 1.

**NATIONAL REGISTER OF HISTORIC PLACES
INVENTORY -- NOMINATION FORM**

FOR HCRS USE ONLY

RECEIVED AUG 27 1979

DATE ENTERED

OCT 14 1979

RAY COUNTY COURTHOUSE

CONTINUATION SHEET

ITEM NUMBER 9

PAGE 1

3. "Block Burns in Richmond, Mo." Weekly Kansas City Star, 5 December 1923, p. 1.
4. Blumenson, John. Identifying American Architecture. Nashville: American Association for State and Local History, 1977.
5. "Carroll County's New Court House." Richmond Conservator, 9 May 1901, p. 1.
6. "Court House Bid Accepted by Court." Richmond Conservator, 7 May 1914, p. 6.
7. "Court House Bonds Ordered Registered." Richmond Conservator, 9 July 1914, p. 33.
8. "Court House Clock Is Now Assured Fact." Richmond Conservator, 22 October 1914, p. 1.
9. History of Ray County, Missouri. St. Louis: Missouri Historical Company, 1881.
10. "Large Crowd Visited Richmond Saturday to Witness Court House Opening and to Hear the Speaking." Richmond Conservator, 25 November 1915, p. 1.
11. "Let's Get the Court House Clock." Richmond Conservator, 8 October 1914, p. 1.
12. Love, Robertus. "Richmond." St. Louis Republic, 28 November 1915.
13. "Made Many Counties." Kansas City Star, 13 December 1904, p. 6.
14. Ray County, Missouri History 1973. Richmond: Ray County Historical Society, 1973.
15. "Road Accident Kills Warren Roberts, Injures Dr. Grace." Chillicothe Constitution-Tribune, 2 November 1950, p. 1.
16. "The Pride of 100 Years of Progress Sweeps Over Richmond, Mo." Kansas City Star, 23 October 1927, pp. 1-2, sec. c.
17. "With Imposing Ceremonies Corner Stone of Ray County's New \$100,000 Court House is Laid by Masonic Fraternity." Richmond Conservator, 24 September 1914, pp. 1 and 6.

FHR-8-300A
(11/78)

UNITED STATES DEPARTMENT OF THE INTERIOR
HERITAGE CONSERVATION AND RECREATION SERVICE

**NATIONAL REGISTER OF HISTORIC PLACES
INVENTORY -- NOMINATION FORM**

FOR HCRS USE ONLY
RECEIVED
DATE ENTERED OCT 11 1979

RAY COUNTY COURTHOUSE

CONTINUATION SHEET

ITEM NUMBER 11 PAGE 1

2. James M. Denny, State Contact Person
Section Chief, Nominations-Survey
Office of Historic Preservation
Department of Natural Resources
P.O. Box 176
Jefferson City, Missouri 65102

July 5, 1979
314-751-4096

Property

Ray County Court House

79001393

State

Missouri, Ray

Working Number

82179-2030

TECHNICAL

Photos 7

Maps 1

CONTROL

HISTORIAN

ARCHITECTURAL HISTORIAN

*Classic revival courthouse
on site occupied by such structures
since 1850s. - typical significance
for governmental / county associations.*

*Accept
Braham
10.11.79*

ARCHEOLOGIST

OTHER

HAER

Inventory _____

Review _____

REVIEW UNIT CHIEF

*Accept
Braham
10.11.79*

BRANCH CHIEF

KEEPER

National Register Write-up _____

Federal Register Entry _____

11.6.79

Send-back _____

Re-submit _____

Entered OCT 11 1979



OBEDIENCE TO LAW IS LIBERTY



IN MEMORY
OF OUR
WORLD WAR
VETERANS

Ray County Court House #1 47
Richmond, Missouri
photographer: Sherry Piland

Ray County, Missouri April, 1979

Ray County Historical Society
and Museum
West Royale Street
Richmond, Missouri 64085

East facade; view looking west.

POE
OCT 11 1979

AUG 27 1979



**SHERIFF
DEPT.**

J. R. STOCKTON, SHERIFF

Ray County Court House
Richmond, Missouri
photographer: Sherry Piland
April, 1979

#2 *17*

Ray County, Missouri

Ray County Historical Society
and Museum
West Royale Street
Richmond, Missouri 64085

Lobby interior.

ACE
OCT 11 1979

AUG 27 1979



OBEDIENCE TO LAW IS LIBERTY

Ray County Court House
Richmond, Missouri
photographer: Sherry Piland
April, 1979

#397

Ray County, Missouri

Ray County Historical Society
and Museum
West Royale Street
Richmond, Missouri 64085

Detail, north facade. View
looking south.

see
OCT 11 1979

AUG 27 1979



Ray County Court House
Richmond, Missouri
photographer: Sherry Piland
April, 1979

#4

47

Ray County, Missouri

Ray County Historical Society
and Museum
West Royale Street
Richmond, Missouri 64085

Lobby interior; view looking
north.

OCT 11 1979

AUG 27 1979



Ray County Court House
Richmond, Missouri
photographer: Sherry Piland
April, 1979

#5 ~~4~~ 7

RAY County, missouri

Ray County Historical Society & Museum
West Royale Street
Richmond, Missouri 64085

North facade on left; west facade on
right. View looking southeast.

DOE

AUG 27 1979

OCT 11 1979



Ray County Court House
Richmond, Missouri
photographer: Sherry Piland
April, 1979

#6 87

Ray County, Missouri

Ray County Historical Society & Museum
West Royale Street
Richmond, Missouri 64085

West facade on left; south facade on
right. View looking northeast.

DOE
OCT 11 1979

AUG 27 1979



Ray County Court House
Richmond, Missouri
photographer: Sherry Piland
April, 1979

#7 47

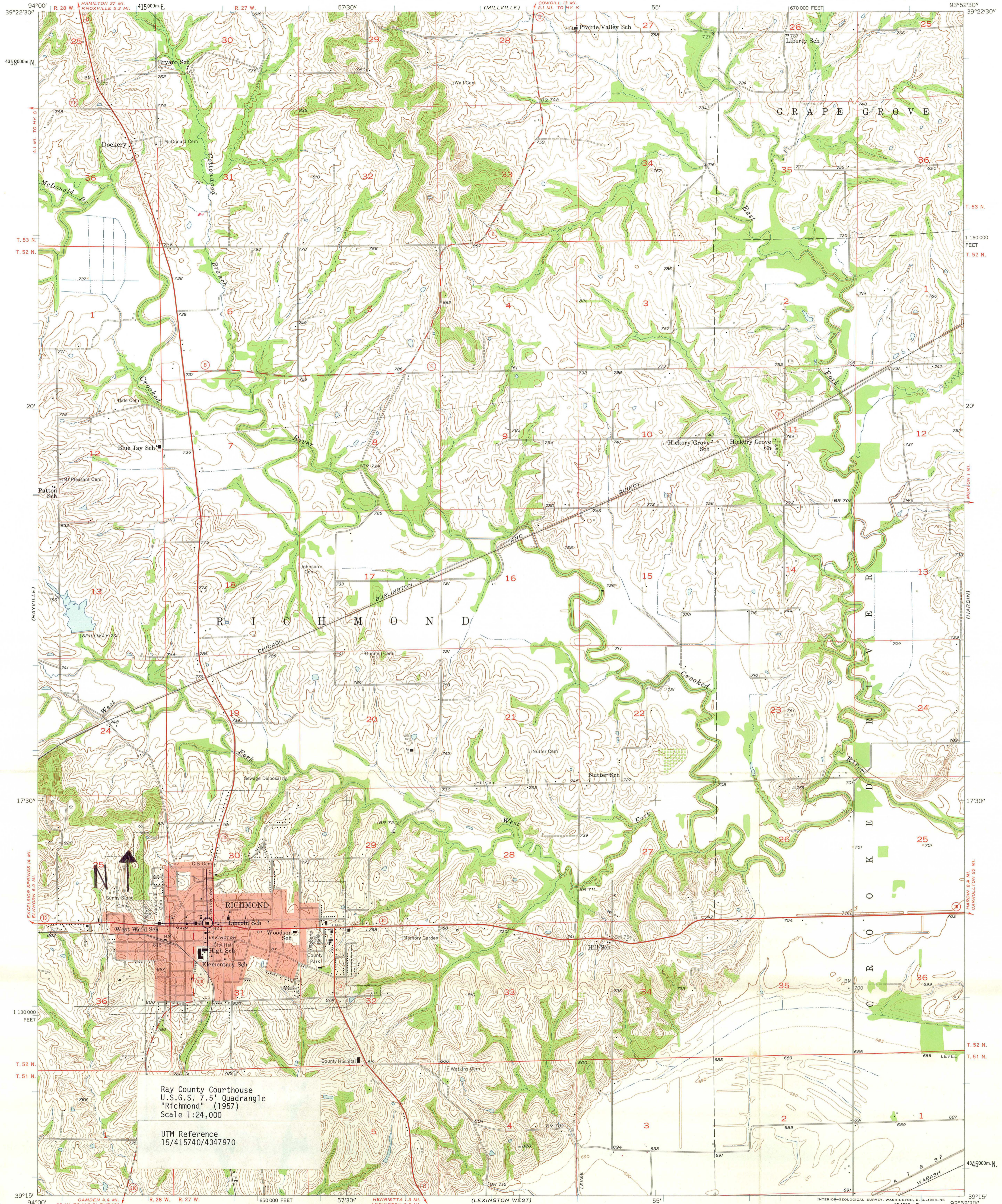
Ray County, Missouri

Ray County Historical Society and
Museum
West Royale Street
Richmond, Missouri 64085

West facade; view looking east.

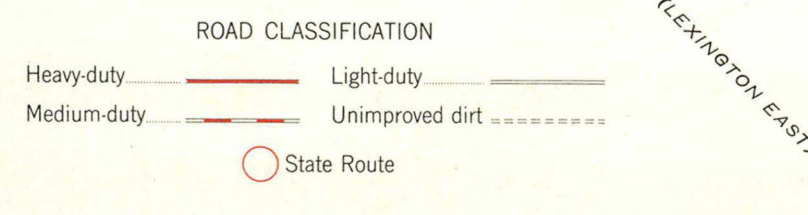
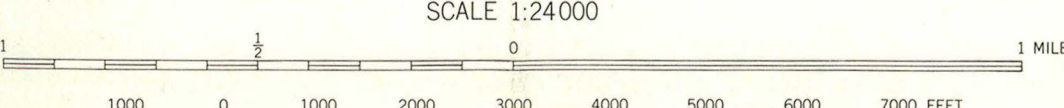
DOE
OCT 11 1979

AUG 27 1970



Ray County Courthouse
U.S.G.S. 7.5' Quadrangle
"Richmond" (1957)
Scale 1:24,000

UTM Reference
15/415740/4347970



CONTOUR INTERVAL 10 FEET
DOTTED LINES REPRESENT 5-FOOT CONTOURS
DATUM IS MEAN SEA LEVEL



RICHMOND, MO.
N 3915 - W 9352.5 / 7.5

1957
OCT. 11 1979
AUG 27 1979

THIS MAP COMPLIES WITH NATIONAL MAP ACCURACY STANDARDS
FOR SALE BY U. S. GEOLOGICAL SURVEY, DENVER 2, COLORADO OR WASHINGTON 25, D. C.
AND BY THE MISSOURI GEOLOGICAL SURVEY, ROLLA, MISSOURI
A FOLDER DESCRIBING TOPOGRAPHIC MAPS AND SYMBOLS IS AVAILABLE ON REQUEST

Ray County Court House

9-17-79

NEWTON C. HAMACHER

CLERK OF RAY COUNTY COURT

RICHMOND, MISSOURI 64085

September 7, 1979

Ray Co.

RP

Mo

MONROE FIELDS,
Presiding Judge
LONNIE PROFFITT,
Western District
TOM BOWEN,
Eastern District

BETTY BOWEN,
Deputy County Clerk
HALLIE GILL,
Employment Coordinator
CATHARINE WOLLARD,
Registration Clerk

Ray Co.

Charles A. Herrington
Acting Keeper of the National Register
Heritage Conservation and Recreation Service
Department of the Interior, Pension Building
440 G Street, N.W.
Washington, D.C. 20243

Dear Sir,

The Ray County Court urges your department to consider favorably the listing of the Ray County Courthouse, Richmond, Missouri in the National Register of Historical Buildings.

This stately building built in 1914 of native Missouri Limestone is the house of all of the county offices of Ray County.

It is respectfully requested that the Ray County Courthouse be favorably considered as a listing in the National Registry of Historical Buildings.

Sincerely,

Monroe Fields

Monroe Fields
Presiding Judge
Ray County Court

NATIONAL REGISTER OF HISTORIC PLACES

DATE SEP 10 1979

PROPERTY OWNER RESPONSE (ATTACHED) _____

PHOTOGRAPHIC MATERIAL SENT _____

TELEPHONE CALL (ATTACHED) _____

DATE ACTION TAKEN _____

INITIALS _____

8/1/8

WILLIS BROWN III

[Faint, illegible text, possibly bleed-through from the reverse side of the page]

For 60.

[Faint, illegible text at the bottom of the page, possibly bleed-through from the reverse side]

[Small circular stamp or mark at the bottom right corner]

ENTRIES IN THE NATIONAL REGISTER

STATE MISSOURI

Date Entered OCT 11 1979

Name

Location

St. Liborius Church and Buildings	St. Louis (ind. city)
Waddell House	Lexington Lafayette County
Kansas City Athenaeum	Kansas City Jackson County
Carroll County Sheriff's Quarters and Jail	Carrollton Carroll County
Nodaway County Courthouse	Maryville Nodaway County
Ray County Courthouse	Richmond Ray County
Missouri Theater and Missouri Theater Building	St. Joseph Buchanan County
Wabash Railroad Station and Freight House	Columbia Boone County
Blees Military Academy	Macon Macon County

Also Notified

ENTRIES IN THE NATIONAL REGISTER

STATE MISSOURI

Date Entered OCT 11 1979

Name

Location

Marten-Becker House

St. Charles
St. Charles County

Glenn House

Cape Girardeau
Cape Girardeau County

Also Notified

Honorable John C. Danforth

Honorable Thomas F. Eagleton
Honorable William L. Clay
Honorable Ike Skelton
Honorable Richard Bolling
Honorable E. Thomas Coleman
Honorable Richard H. Ichord
Honorable Harold L. Volkmer
Honorable Bill D. Burlison

State Historic Preservation Officer
Mr. Fred A. Lafser
State Department of Natural Resources
1001 SW. Blvd.
P.O. Box 176
Jefferson City, Missouri 65102

NR Byers/bjr 10/16/79

For further information, please call the National Register at (202)343-6401.