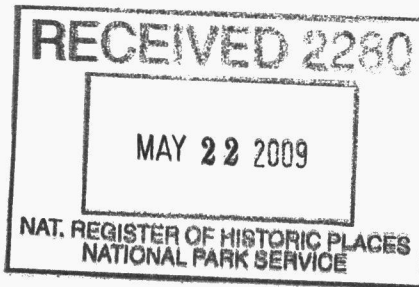


United States Department of the Interior
National Park Service

National Register of Historic Places Registration Form



477

1. Name of Property

historic name Munichburg Commercial Historic District

other names/site number N/A

2. Location

street & number 114-130 (even only) E. Dunklin St., 610, 620 Madison St., 704 Madison St.
[N/A] not for publication

city or town Jefferson City [N/A] vicinity

state Missouri code MO county Cole code 051 zip code 65101

3. State/Federal Agency Certification

As the designated authority under the National Historic Preservation Act, as amended, I hereby certify that this [x] nomination [] request for determination of eligibility meets the documentation standards for registering properties in the National Register of Historic Places and meets the procedural and professional requirements set forth in 36 CFR Part 60. In my opinion, the property [x] meets [] does not meet the National Register criteria. I recommend that this property be considered significant [] nationally [] statewide [x] locally.
(See continuation sheet for additional comments [] .)

Mark A Miles May 18, 2009
Signature of certifying official/Title Mark A. Miles/Deputy SHPO Date

Missouri Department of Natural Resources

State or Federal agency and bureau

In my opinion, the property [] meets [] does not meet the National Register criteria.
(See continuation sheet for additional comments [] .)

Signature of certifying official/Title Date

State or Federal agency and bureau

4. National Park Service Certification

I hereby certify that the property is:

[] entered in the National Register.
See continuation sheet [] .

[] determined eligible for the National Register.
See continuation sheet [] .

[] determined not eligible for the National Register.

[] removed from the National Register.

[] other, (explain:)

Erson H. Beall 7-1-09
Signature of the Keeper Date of Action

**Munichburg Commercial Historic District
 Historic Southside (Munichburg) Multiple Property Submission
 Jefferson City, Cole County, MO**

5. Classification

Ownership of Property	Category of Property
<input checked="" type="checkbox"/> private	<input type="checkbox"/> building(s)
<input type="checkbox"/> public-local	<input checked="" type="checkbox"/> district
<input type="checkbox"/> public-State	<input type="checkbox"/> site
<input type="checkbox"/> public-Federal	<input type="checkbox"/> structure
	<input type="checkbox"/> object

Number of Resources Within Property	
Contributing	Non-contributing
8	1 buildings
0	0 sites
0	0 structures
0	0 objects
8	1 Total

Name of related multiple property listing.

Historic Southside (Munichburg) Multiple Property Submission

Number of contributing resources previously listed in the National Register.

N/A

6. Function or Use

Historic Functions

COMMERCE/TRADE: Specialty Store
COMMERCE/TRADE: Restaurant

Current Functions

COMMERCE/TRADE: Specialty Store
COMMERCE/TRADE: Restaurant

7. Description

Architectural classification

Other: Commercial Buildings
Other: One-part commercial block
Other: Two-part commercial block

Materials

foundation stone
 walls brick
ceramic tile
 roof asphalt
 other wood
metal

See continuation sheet []

Narrative Description See continuation sheet [x].

United States Department of the Interior
National Park Service

National Register of Historic Places
Continuation Sheet

Section number 7 Page 1

Munichburg Commercial Historic District
Historic Southside (Munichburg) Multiple Property Submission
Jefferson City, Cole County, MO

Summary: The Munichburg Commercial Historic District includes nine properties located around the intersection of East Dunklin and Madison Streets, in Jefferson City, Cole County Missouri. Dunklin and Madison Streets are both important commercial roads in the historic Munichburg neighborhood of Jefferson City, and all of the buildings in the district are commercial buildings. Six are located on the southwest side of East Dunklin Street, at 114-130 E. Dunklin (even addresses only). The other three are on the northwest side of Madison Street, at 610, 620, and 704 Madison Street. All are masonry buildings; one is a single-story with three storefronts, and the others are two-stories, with open ground floor storefronts, and upper walls of brick or ceramic block. The buildings were built over a wide span of time; the oldest in the group was constructed in 1892, and the last major construction project in the district took place in 1951. The oldest building in the group, the Nieghorn House at 120-122 E. Dunklin, was built as a hotel in 1892. The “newest” building in the group, a three-bay commercial building at 114-116 E. Dunklin, was remodeled to its current form in 1951. All nine buildings are examples of Property Type 7: Commercial Buildings, as described in the Multiple Property Submission Cover Document “Historic Southside (Munichburg) Multiple Property Submission.” Eight of those meet the registration requirements laid out in that cover document and are therefore counted as contributing buildings. One building that has seen modern alterations is a non-contributing building. There are no outbuildings or other resources in the district. Together, the buildings of the district represent one of the most intact collections of historic commercial buildings left in Munichburg today.

Elaboration: The 100 block of East Dunklin is part of the small historic commercial center of Munichburg, a neighborhood in Jefferson City that is documented in the MPS cover document. The neighborhood is just a few blocks south of Downtown Jefferson City, at the intersection of E. Dunklin and Madison Streets. As is the case in downtown Jefferson City, the streets in Munichburg are laid out in a grid that aligns with the Missouri River, at an angle to the compass points. Dunklin Street, which is one of the more prominent roads in the area, runs northwest to southeast. (See Figure One, Location Map.) The historic district encompasses most of the southwest side of the 100 block of Dunklin, along with three buildings on the northwest side of

United States Department of the Interior
National Park Service

National Register of Historic Places
Continuation Sheet

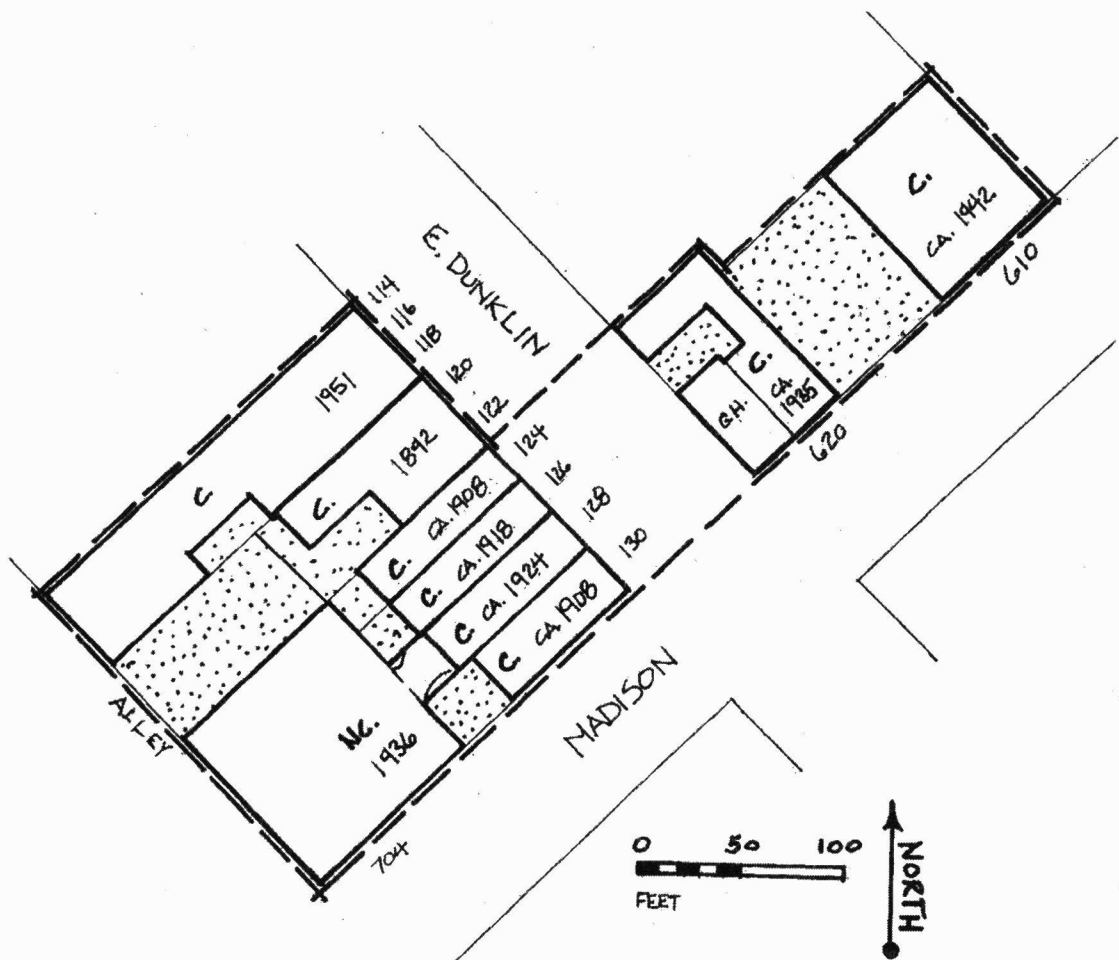
Section number 7 Page 3

Munichburg Commercial Historic District
Historic Southside (Munichburg) Multiple Property Submission
Jefferson City, Cole County, MO

Figure Two. Site Plan. Drawn by Debbie Sheals.

- C= Contributing
- NC=Non-contributing
- GH=greenhouse
- Resource Count:
- 8 contributing buildings
- 1 non-contributing building

Shaded areas are paved parking



United States Department of the Interior
National Park Service

National Register of Historic Places
Continuation Sheet

Section number 7 Page 4

Munichburg Commercial Historic District
Historic Southside (Munichburg) Multiple Property Submission
Jefferson City, Cole County, MO

Individual Property Descriptions.

Historic names are based upon the first known occupants of the properties; the original owners are listed if known. Construction dates are from a variety of sources, including historic inventory forms prepared by the Urbana Group in 1995, Sanborn Fire Insurance maps, and a brief history of the properties written by Walter A. Schroeder.

[c]=contributing resource

[nc] = non-contributing resource

114-118 E. Dunklin. Southside Barber Shop, ca. 1893, current form: 1951.

This one-story brick building with three open storefronts is the only building in the district that is just one-story. At its core is a ca. 1880 commercial building that also had three shops; it was remodeled and enlarged to its current form in 1951 and with the exception of a rear addition, has seen no changes of note since that time. It is a wide, low commercial building with a flat roof and an unadorned façade. The two end storefront spaces have doors set to the side in slanted recessed storefronts that have built-in planter boxes, and the middle shop has a central recessed doorway. The northeast bay has been continually occupied by a barbershop since 1908. This is one of the deeper buildings on the block, it extends all the way back to the rear alley. [c]

120-122 E. Dunklin. Nieghorn House Hotel, John Nieghorn, 1892.

This is the largest and oldest building in the district. It is a three-story brick building with a flat roof and two ground floor storefronts. A doorway centered on the lower façade opens to a staircase to the upper floors, which contain apartments. The ground floor has two separate retail spaces. Both retail spaces have open storefronts. The one at 120 Dunklin has newer glass and framing, and newer brick and stucco above it indicates that the opening has been lowered slightly in the recent past. Historic photos show that this storefront opening was originally taller than the one on the other side of the façade. The storefront at 122 has an early or original wood-framed transom, over newer display windows and a central doorway.

The upper façade is topped with a large corbelled brick cornice, and a slightly smaller secondary brick cornice runs along the top of the second floor line. The third floor of the front wall has three sets of paired windows that have rock-faced stone lug sills and are topped with segmental brick arches. The

United States Department of the Interior
National Park Service

National Register of Historic Places
Continuation Sheet

Section number 7 Page 5

Munichburg Commercial Historic District
Historic Southside (Munichburg) Multiple Property Submission
Jefferson City, Cole County, MO

second floor has five single window openings, all of which have the same type of stone sill used above. The center second floor window differs from the others on the façade. It has a flat top, and it is set into a wider panel of brick that is slightly different from that on the rest of the façade. Although this section appears to have been in-filled after the building was built, there is no evidence on the interior of a larger original opening at that level, and it has been assumed that the change was made early in the building's history. All of the window sashes on the façade are newer, but the openings themselves are intact. Side and rear windows are similar, with arched tops and stone sills. The northwest side wall overlooks a one-story building and the southeast side wall is approximately one foot from the two-story building on the next lot. With the exception of a modern one story rear addition, the building occupies about two thirds of its lot. The back edge of the lot is open, with a gravel parking area. [c]

124 E. Dunklin. Schmidt Shoe Store, John Conrad and Josephine Schmidt, ca. 1908.

This two-part commercial block was built to contain John Schmidt's shoe store on the ground floor and the family residence on the second. It is two stories tall, with brick walls and an open storefront at the ground floor. A modern brick façade has recently been removed from the storefront area in preparation for a full rehabilitation. The first floor of the building has a single door to one side and an open storefront along the rest of the façade. The openings are supported by early or original ornamental cast iron support posts, and the doorway retains what appears to be an original wood and glass door and transom. The storefront openings has two sections that are flanked by cast iron columns, one just is just wide enough for a recessed entry, and the other, which would have held a display window, encompasses the rest of the ground floor. Those openings currently have frame infill, which will be replaced with glazing in the upcoming rehabilitation project. The upper façade, which is painted white, has a two wide flat-topped windows and a corbelled brick cornice. A partially enclosed frame porch runs along the back wall; it is early but probably not original and in poor condition. This lot is shorter than those to the northwest, and the building occupies almost all of the property. [c]

United States Department of the Interior
National Park Service

National Register of Historic Places
Continuation Sheet

Section number 7 Page 6

Munichburg Commercial Historic District
Historic Southside (Munichburg) Multiple Property Submission
Jefferson City, Cole County, MO

126 E. Dunklin. Southside Dry Goods, John Conrad Schmidt, ca. 1918.

This building was built for the same merchant who built 124 E. Dunklin, and they appear to have been near twins when new. It is a two-story brick two part commercial block with a corbelled brick cornice and flat topped windows that are very similar to those on the building next door. The upper façade differs in that it is unpainted, and there is a small brick parapet above the cornice that may have been added later. The lower façade has a central storefront with a separate single door next to each side wall, and a modern shallow frame hood covered with shake shingles shelters the entire first floor. The single doors appear to be early but may not be original, and the recessed storefront is several decades old. An enclosed frame porch covers the back wall; it is probably not original and is in poor condition. This lot is the same size as the one at 124, and the building also occupies almost all of the property. [c]

128 E. Dunklin. Milo H. Walz Hardware Store, Milo H. Walz, ca. 1924.

This two-story brick two part commercial block has a wide brick façade and an open ground floor storefront. The upper façade is of rough red brick, with a stone or concrete nameplate centered in the top of the wall. The nameplate reads WALZ in simple block letters. Unlike the other buildings on this side of the block, this one has no cornice, just a simple sailor course along the top of the wall. The second story has three wide windows, each with a sailor course lintel and smooth concrete or stone sill. The top edge of the storefront opening is also accented with a sailor course. The storefront itself occupies most of the first floor, with a deeply recessed central doorway that is flanked by large bronze-framed display windows that appear to be original. A newer shake-roofed hood runs along the top of the storefront. The back wall of this building is linked to the large building at 704 Madison Street; the second floors of the two buildings are connected by an enclosed bridge that runs over a small private alley. They were both built and owned by the Walz family, who operated the businesses there into the 1990s.¹ [c]

¹ Jane Beetem, "Historic Southside (Munichburg) Multiple Property Submission," (Jefferson City: State Historic Preservation Office, 2002) pp. E 37-E37.

United States Department of the Interior
National Park Service

National Register of Historic Places
Continuation Sheet

Section number 7 Page 7

Munichburg Commercial Historic District
Historic Southside (Munichburg) Multiple Property Submission
Jefferson City, Cole County, MO

704 Madison—(Back of 128 E. Dunklin.) Milo H. Walz Furniture Store, Milo H. Walz, 1936.

A wide two-story brick commercial building with storefronts along the ground floor and paired double-hung windows on the second floor. The windows, which are covered with newer storm windows, may be original. The upper façade has a simple stepped parapet, and an inset name plate that reads MILO WALZ. The entire front wall has a modern stucco coating which includes applied arched trim each of the façade openings. The building faces Madison Street and its side wall is linked to 128 E. Dunklin by an enclosed second story walkway; those two building share a single legal parcel of land. It is linked to another building that faces Madison with a similar connector, but that building is a separate legal parcel and not included in the district boundaries. [nc]

130 E. Dunklin. Henry Schmidt Grocery Store, Henry Schmidt, ca. 1908.

A two story brick commercial building with a tall corner tower and Late Victorian styling. This is the one of the most highly styled buildings in the district. It occupies a corner lot, and has a narrow façade on East Dunklin Street and a longer side wall that faces Madison Street. The ground floor of the façade is built of tan bricks, and the rest of the building is faced with pale reddish bricks. A limestone string course and a dentiled brick cornice at the bottom of the second floor windows marks the boundary between the two types of brick. The corner tower is square, with piers along its edges and louvered openings in the upper walls. It has a pyramidal roof with a flag pole mounted at the peak. The roof of the tower and a small sloped roof at the top of the Dunklin Street façade both have wide eaves with ornamental flat brackets.

The second floor windows in the tower and the façade have large smooth stone lintels, and the windows on the side wall are topped with segmental brick arches. The side wall has full height windows all along the second floor, and just three short windows set high in the wall on the first floor. That side of the building also has a second floor balcony of iron filigree that appears to be original, and single doors on each level.

The ground floor of the façade is sheltered by a newer shake-roofed hood that matches those on the adjacent buildings. There is a wide entranceway near the corner and a narrow single door near the other edge of the façade. The doorway doorway openings are original, and the doors themselves appear to be newer. A newer frame wall with small windows spans the space between the

United States Department of the Interior
National Park Service

National Register of Historic Places
Continuation Sheet

Section number 7 Page 8

Munichburg Commercial Historic District
Historic Southside (Munichburg) Multiple Property Submission
Jefferson City, Cole County, MO

two doorways. The Madison Street side of the first floor of the tower is faced with tan brick, with original brick pier and ornamental limestone cap, and panels in the brickwork above the storefront are also still intact. The back wall of the building has a small open porch and stairs that are fairly early but probably not original. The building occupies almost all of its lot; a small private alley runs along the back of the property. [c]

610 Madison. Central Dairy, Dot Sappington, ca. 1935, current form: ca. 1942.

A wide two-story commercial block, with three bays of windows on each level of the façade. Although there is no visible break or variation in the façade, historic records have shown that this building was constructed in two stages. The northern end dates to ca. 1935, and an expansion ca. 1942 more than doubled the building, to its current size and shape.

The front wall is built of cream colored glazed ceramic blocks, with pale green blocks along the walls beneath the ground floor storefronts. The upper façade has three wide bands of aluminum-framed windows, and the ground floor has three taller sets of display windows, each of which is sheltered by a striped canvas awning. The words CENTRAL DAIRY are spelled out above the central ground floor storefront, and each of the end bays has double doors. The building sits near the northeast end of its lot, with paved parking in the open space to the southwest. The side wall by the parking lot is faced with slightly darker glazed blocks, and the other two walls, which are bordered by alleys, are stuccoed. [c]

620 Madison. Busch's Florist, ca. 1935. (Greenhouse ca. 1890 for Busch and Purzner.) (Photo 11.)

This property has been used continually for a commercial nursery and florist business for well over a century. The main part of the building is a two-story commercial building constructed ca. 1935. It has brick walls and a flat roof. A greenhouse that was built in the late 19th century is attached to one side wall, and a one-story rear ell extends in an "L" shape along the back of the lot to include a formerly separate building on Dunklin Street. The upper façade of the main part of the building has two sets of paired double-hung windows that have simple stone lug sills, and are flanked by shutters. The lower facade is sheltered by a newer canvas awning, and filled with an open storefront that

United States Department of the Interior
National Park Service

National Register of Historic Places
Continuation Sheet

Section number 7 Page 9

Munichburg Commercial Historic District
Historic Southside (Munichburg) Multiple Property Submission
Jefferson City, Cole County, MO

appears to be largely original. The storefront has large display windows, and a deeply recessed central entrance. The rear ell has newer finishes, with stucco or vinyl siding on the walls, a shallowly sloped asphalt roof, and newer doors and windows facing Dunklin Street. The greenhouse, which occupies the prominent south corner of the lot, has a gabled end that faces Madison, and a long side wall on Dunklin Street. Its entire roof structure, as well as part of the front and side walls, is of metal and glass that appears to be part of the original late 19th century greenhouse. [c]

**Munichburg Commercial Historic District
Historic Southside (Munichburg) Multiple Property Submission**

Jefferson City, Cole County, MO

8. Statement of Significance

Applicable National Register Criteria

A Property is associated with events that have made a significant contribution to the broad patterns of our history.

B Property is associated with the lives of persons significant in our past.

C Property embodies the distinctive characteristics of a type, period, or method of construction or represents the work of a master, or possesses high artistic values, or represents a significant and distinguishable entity whose components lack individual distinction.

D Property has yielded, or is likely to yield, information important in prehistory or history.

Criteria Considerations

Property is:

A owned by a religious institution or used for religious purposes.

B removed from its original location.

C a birthplace or grave.

D a cemetery.

E a reconstructed building, object, or structure.

F a commemorative property.

G less than 50 years of age or achieved significance within the past 50 years.

Narrative Statement of Significance

See continuation sheet [x].

9. Major Bibliographic References

Bibliography See continuation sheet [x].

Previous documentation on file (NPS):

- preliminary determination of individual listing (36 CFR 67) has been requested
- previously listed in the National Register
- previously determined eligible by the National Register
- designated a National Historic Landmark
- recorded by Historic American Buildings Survey

- recorded by Historic American Engineering Record

Areas of Significance

Ethnic Heritage: European
Commerce

Period of Significance

1892-1951

Significant Dates

N/A

Significant Person(s)

N/A

Cultural Affiliation

N/A

Architect/Builder

Wallau, Henry J./ Architect and Builder

Primary location of additional data:

- State Historic Preservation Office
- Other State Agency
- Federal Agency
- Local Government
- University
- Other:

Name of repository:

United States Department of the Interior
National Park Service
National Register of Historic Places
Continuation Sheet

Section number 8 Page 10

**Munichburg Commercial Historic District
Historic Southside (Munichburg) Multiple Property Submission
Jefferson City, Cole County, MO**

Summary: The Munichburg Commercial Historic District includes nine historic commercial buildings on East Dunklin and Madison Streets in Jefferson City. The cultural and architectural history of Munichburg, which is also known as the Southside, has been documented in the Multiple Property Submission (MPS) cover document "Historic Southside (Munichburg) Multiple Property Submission Cover Document." The district is locally eligible under Context 2 "Cultural Changes Shape Munichburg" and Context 3 "Post WWII to the beginning of Neighborhood Decline" of that document, under Criterion A in the areas of COMMERCE and ETHNIC HERITAGE: EUROPEAN. The period of significance for the district corresponds to the construction dates of the buildings found there: 1892-1951. The buildings of the district represent a rare intact collection of historic commercial architecture in Munichburg. A survey of the entire Southside area that was done in 1995 found few cohesive collections of historic buildings in the area, and in fact, recommended no district designation at that time. The recent removal of modern materials from a building in the center of the 100 block of Dunklin has had a positive impact upon the historic streetscape, and the row of historic buildings on that part of the street once again conveys a sense of its time and place. The buildings of the district also serve as an important link to the German-Americans who developed the Munichburg neighborhood in the late 19th and early 20th centuries. Seven of the nine buildings in the district were built by or for German-Americans, and several of the buildings in the district were home to the same business for decades. Busch's Florist, at 620 Madison, for example, was founded by a German immigrant Hugo Busch and a partner in 1890, and continues to operate as Busch's Florist today. Two other buildings were occupied by the Milo H. Walz Furniture Company for more than fifty years, and a building at 114 E. Dunklin has housed a barbershop continuously for at least a century. Most of those buildings look much as they did during the period of significance, and all continue in their original commercial functions.

Elaboration:

The German-American neighborhood of Munichburg developed just south of downtown Jefferson City in the late 19th and early 20th centuries. As noted in the guidebook Exploring Jefferson City, "Munichburg is known as the historic Protestant German-settled district of Jefferson City. Originally separated from

United States Department of the Interior
National Park Service

National Register of Historic Places
Continuation Sheet

Section number 8 Page 11

Munichburg Commercial Historic District
Historic Southside (Munichburg) Multiple Property Submission
Jefferson City, Cole County, MO

downtown by Wears Creek (and today by the busy Highway 50/63 expressway), Munichburg developed as a self-sufficient 'Germantown,' with its own shopping district, fire department, churches and hotels."² The original local term for the neighborhood was actually *Muenchberg*, after the village in Germany of the same name, which was the home of many of the original settlers to the area. That name was gradually corrupted into Munichburg, a term that remained in use into the early 20th century.³ The name Munichburg fell from favor somewhat in the post-WWI years, possibly due to anti-German sentiment associated with the war. Over the last half of the 20th century the neighborhood has been known almost exclusively as the Southside, a name that was in use in the 19th and 20th centuries as well.⁴

The neighborhood covers several square blocks and contains a mix of residential and commercial properties. The shopping district was historically located on the streets around the intersection of Dunklin and Jefferson Streets, including the 100 block of East Dunklin. The Munichburg Commercial District is on the eastern end of that early commercial center, which today has only scattered examples of intact historic commercial buildings. This district contains one of the most cohesive groupings of commercial architecture found in the neighborhood today. This area was recognized in the MPS cover as having had "multiple businesses that played an integral part in the southside community," and several of the buildings of the district were profiled in the Munichburg section in Exploring Jefferson City.⁵

The oldest building in the district, the Nieghorn House, was built at 120-122 E. Dunklin in 1892, just after water mains and gas lines were installed along Dunklin Street. It was one of the first buildings in the area to be connected to those services. The three-story red brick building was constructed for Bavarian immigrant John Nieghorn, who lived on one of the upper floors and rented the remainder of the large building to various tenants. His son, John Nieghorn reportedly laid the limestone foundation, of stone that was quarried nearby. The architect was Henry J. Wallau, a friend of Nieghorn's who is

2 Gary Kremer, Exploring Historic Jefferson City, (Jefferson City: City of Jefferson, 2003) p. 69.

3 Beetem, E.11-12.

4 Beetem, p. E.12

5 Beetem, p. E.37, and Kremer, pp. 80-85.

United States Department of the Interior
National Park Service

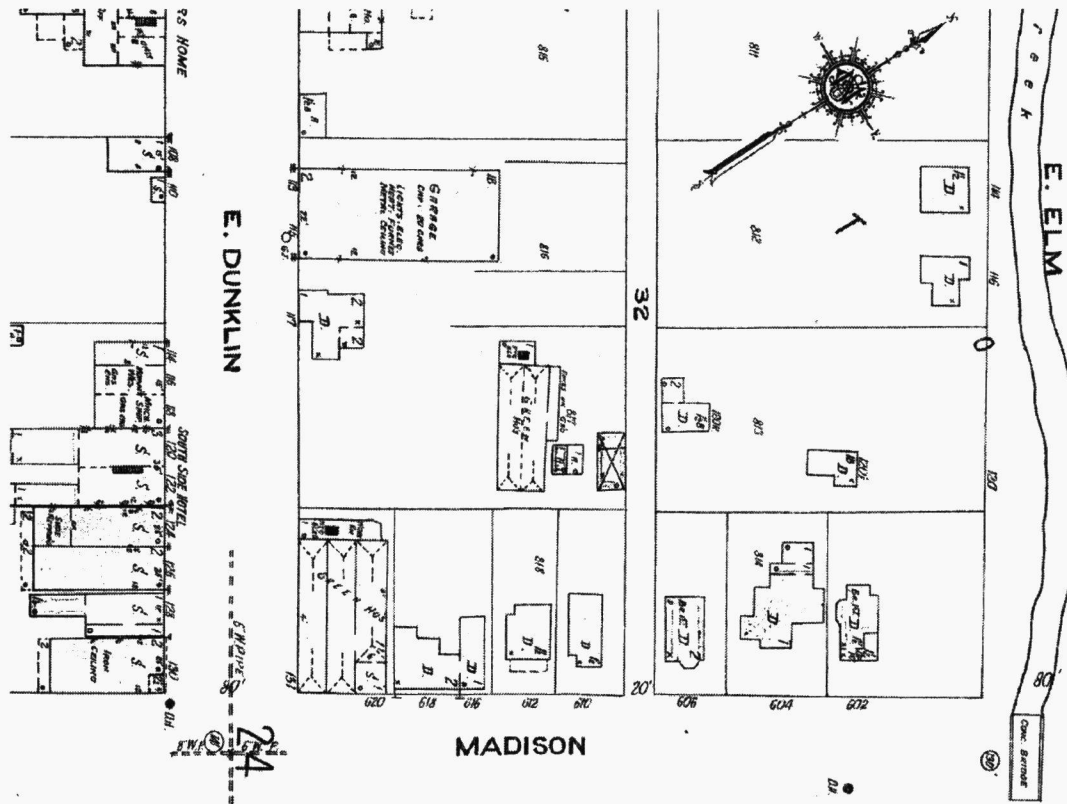
National Register of Historic Places
Continuation Sheet

Section number 8 Page 12

Munichburg Commercial Historic District
Historic Southside (Munichburg) Multiple Property Submission
Jefferson City, Cole County, MO

credited with designing and building several buildings in Jefferson City, including St. Peter School.⁶ When new, the building had a saloon/restaurant on one side of the ground floor and a retail shop on the other, with two floors of hotel rooms above. The hotel catered to farm families who came into town for shopping in the neighborhood and stayed overnight before returning home.

Figure Three. 1923 Sanborn Map.



6 Schroeder, based upon interviews with Nieghorn family members who still live in the area. Note that the Nieghorn family spelled their name differently than the Neighorn Creek, which is nearby.

United States Department of the Interior
National Park Service

National Register of Historic Places
Continuation Sheet

Section number 8 Page 13

Munichburg Commercial Historic District
Historic Southside (Munichburg) Multiple Property Submission
Jefferson City, Cole County, MO

Nieghorn died in his room in the hotel in 1899, after which family members sold the property to George Bassmann, who operated the saloon and lodging business for many years. In the 1920s, Bassmann converted the upper floors to apartments, and the tiled entryway to the second floor still bears the words "Bassmann Apartments." One of the commercial spaces housed a large steam laundry for several years, and a restaurant and/or saloon could be found there for most of the period of significance.

Nieghorn was not the only early business owner who chose to live above his business. Early in the 20th century, John Conrad (Hans) and Josephine Schmidt replaced a one story frame shop at 124 E. Dunklin that they had been using for a shoe shop with a substantial two story brick commercial building. The new building provided not only a modern new shoe store, but a spacious apartment on the second floor that was the Schmidt family home for decades. Their son, John Jacob (Chicken) Schmidt later took over the shoe store. The use of middle and nicknames like Hans and Chicken were presumably done to help keep track of the various John Schmidts in the neighborhood—Hans Schmidt's father was also named John.

Business must have been good for the Schmidt family; less than ten years later, John Conrad and Josephine Schmidt built a nearly identical building right next door, at 126 E. Dunklin. The ground floor of that new building housed the dry goods store of another son, Joseph Charles Schmidt, for at least a decade.⁷ John Jacob (Chicken) Schmidt and his wife lived in one of the two second floor apartments of that building.

Yet another Schmidt family member had a grocery store on the block during that time period. About the same time the Schmidt's were building their new shoe store, grocer Henry Schmidt built a large new Victorian style commercial building at the corner of Dunklin and Madison. Henry was John Conrad (Hans) Schmidt's older brother. Henry Schmidt's building was also built with living quarters on the upper floor, although he lived in a house nearby on Madison. That corner building housed grocery stores for most of the period of significance. In the 1920s or early 30s, Schmidt sold it to the Schwartz family, who also had a market in downtown Jefferson City and they operated a grocery

⁷ Schmidt family history was provided by Walter Schroeder, based upon a 2009 interview with Albert Case, grandson of John Conrad and Josephine Schmidt.

United States Department of the Interior
National Park Service

National Register of Historic Places
Continuation Sheet

Section number 8 Page 14

Munichburg Commercial Historic District
Historic Southside (Munichburg) Multiple Property Submission
Jefferson City, Cole County, MO

there until it became a Kroger in the 1930s. In 1959, the building became the home of the Wel-Com-Inn, a popular neighborhood bar that this year celebrates a half century of operation in the same location.⁸

The land across Dunklin Street from Schmidt's grocery store was occupied at an early date by a commercial nursery. In the late 1800s, much of the land on the northern side of Dunklin sloped steeply down to the floodplain of Wear's Creek, which provided a good spot for a nursery business. The first nursery business in that spot was owned and operated as early as 1875 by Mathias Nagel, who sold out to Hugo Busch and Charles Purzner in 1890.⁹ Those men established Busch and Purzner Florists at 117 E. Dunklin, and by the turn of the century had built several large greenhouses, including the one that still occupies the corner of E. Dunklin and Madison. Mr. Busch and his wife Lena bought out Purzner's interest in 1902, and the name became Capitol City Greenhouse, then Busch's Florists. Around 1935, a small office facing Madison Street was replaced with a much larger two-story building that is still in use today, and a section of the turn of the century greenhouse remains in use as well. The business was owned and operated by the Busch family until 1997, when it was sold to the current owner, John Pelzer, in 1997. Mr. Pelzer kept the Busch name, and Busch's Florist continues more than a century of operation at this location.

Like the other business owners on the block, Busch and Purzner lived close to where they worked; for several years they shared a two-story brick house at 117 E. Dunklin, and after Purzner moved on, the house served as the Busch family home. Purzner stayed in the area, however; the census shows that he and his family were living in Jefferson City in 1910, possibly on a farm, as one member of his household at that time was 20 year old farmhand William Meister, who was also the son of a German immigrant. Meister was soon to develop his own commercial ties to Dunklin Street; by the 1910s, he was operating a barber shop at 114 E. Dunklin. (See individual property information in Appendix I.)

⁸ Kremer, p. 84.

⁹ Beetem, p. E.26.

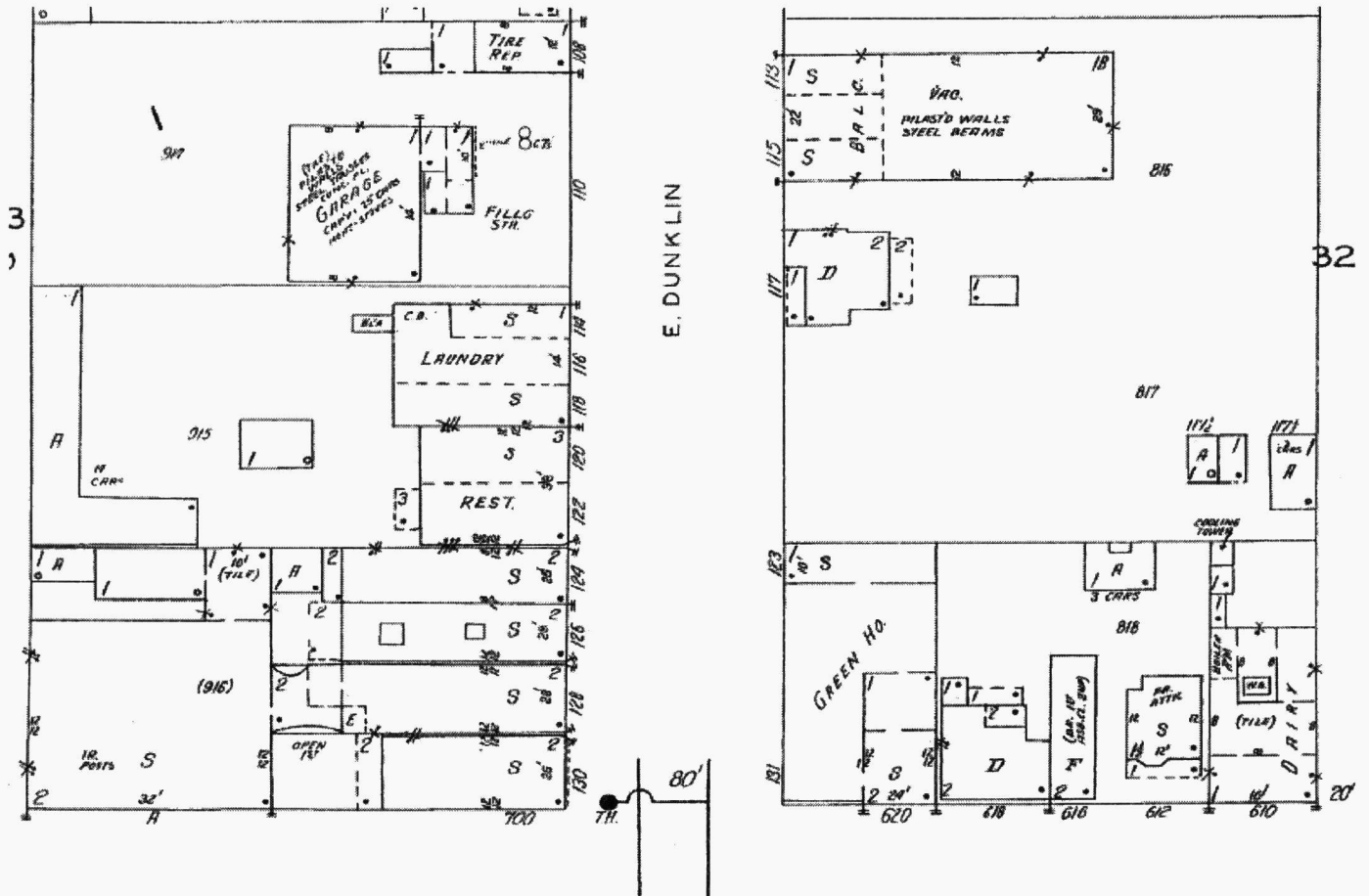
United States Department of the Interior
National Park Service

National Register of Historic Places
Continuation Sheet

Section number 8 Page 15

Munichburg Commercial Historic District
Historic Southside (Munichburg) Multiple Property Submission
Jefferson City, Cole County, MO

Figure Four. 1939 Sanborn Map. Madison Street is at the bottom of the page.



United States Department of the Interior
National Park Service

National Register of Historic Places
Continuation Sheet

Section number 8 Page 16

Munichburg Commercial Historic District
Historic Southside (Munichburg) Multiple Property Submission
Jefferson City, Cole County, MO

The barber shop was one of three businesses in a one-story building that was constructed for harnessmaker Louis Sachs sometime after 1892.¹⁰ City directories and other records show that the commercial space at 114 was a barber shop by 1908, and that it has continued in that function to the present day. A major remodeling project in 1951 enlarged the barbershop space slightly and completely rebuilt the façade of the building, and it is for all practical purposes a mid-20th century building. It has seen no changes of note since then, and it is still occupied by the South Side Barber Shop, for which it was remodeled in 1951.

Two of the buildings in the district were built for the Milo Walz family. In 1923, Milo Walz, the son of German immigrants, opened a new and used furniture store in a small frame building at 128 E. Dunklin. The business apparently prospered, as only a few years later he replaced the small frame shop with the two-story brick commercial building that still occupies that lot. Unlike other property owners on the block, he did not use the second floor for a residence, however. That space contained offices for the furniture business that occupied the open ground floor. The business continued to grow even during the Great Depression, and in 1936, Walz built an even larger furniture store on the lot behind the Dunklin Street building, at 704 Madison. That two-story brick building has been linked to the Dunklin Street shop by an elevated enclosed bridge since it went into service.

After the furniture business moved into the new building, the Dunklin Street shop was converted to a hardware store, and as the Walz family grew, so did their business ventures. As sons and daughters came of age, they were given jobs running various stores or offices, and the business eventually incorporated. The second floor of 128 E. Dunklin still contains the boardroom that Milo's son Don Walz recalls being used for discussions relating to the family business, many of which extended late in to the evenings. Don Walz recalled that when people in the neighborhood saw the lights on late at night they would comment that the "German mafia" must be meeting. The Walz family business operated well into the 20th century and in the 1970s reached a peak employment

¹⁰ Although the Southside survey dated that core building at ca. 1880, it does not show up in an 1891-92 photo of the block, and has therefore been assumed to have been built after 1892.

United States Department of the Interior
National Park Service

National Register of Historic Places
Continuation Sheet

Section number 8 Page 17

Munichburg Commercial Historic District
Historic Southside (Munichburg) Multiple Property Submission
Jefferson City, Cole County, MO

of some 125 people.¹¹ The Walz Company no longer operates businesses in the district, but they do still own the buildings there.

One of the newest buildings in the district, Central Dairy, is located just north of Busch's Florist at 610 Madison. That building was built specifically for Central Dairy ca. 1935 and enlarged to its current form just a few years later. Central Dairy was founded in the nearby town of Columbia in 1920 by Boone County natives Dot Sappington and Clyde Shepard. The partners had good success in Columbia, and within a few years had grown enough to build a large new building, from which they operated the commercial dairy and sold ice cream and other products on site.¹² In 1932, Dot Sappington sold his share of the Columbia company to his son, W. Roy Sappington, and William Pyle, and moved to Jefferson City to start a new Central Dairy in that town.¹³ Even though both the Columbia and Jefferson City Central Dairies used the same logos and had many similarities, they were separate companies.

Sappington took the same approach in Jefferson City that he and Shepard had used when they were starting out in Columbia. He opened for business in a small existing building, and once he was sure of his market, built a new building specifically for the dairy. Directories show that Central Dairy occupied a very small shop at 108 E. Dunklin in 1932 and 1933, but by 1935 had its own new two-story building around the corner on Madison Street. (The 108 E. Dunklin building is no longer extant.) The ice cream counter of the Madison Street shop was an instant success, and Sappington had to greatly increase its capacity within just a few years.¹⁴ Around 1942, he more than doubled the size of the Madison Street building, to its current size and shape. It has been home to Central Dairy ever since, and has seen no changes of note since the 1940s.

The contributing buildings of the district are all intact examples of Property Type 7: Commercial Buildings, as described in the MPS cover document. The group includes some of the better-known of Munichburg's historic commercial buildings, including the Walz buildings, Busch's Florist and

11 Kremer, pp. 84-85.

12 Debbie Sheals, National Register nomination for Central Dairy in Columbia. That building was listed in the National Register 01/20/05.

13 James E Ford, History of Jefferson City and Cole County, (Jefferson City: New Day Press, 1938) pp. 532-533.

14 Kremer, p. 85.

United States Department of the Interior
National Park Service

National Register of Historic Places
Continuation Sheet

Section number 8 Page 18

Munichburg Commercial Historic District
Historic Southside (Munichburg) Multiple Property Submission
Jefferson City, Cole County, MO

the Central Dairy building. Each of those buildings is recognized as an important historic resource in a number of historical sources, including the MPS cover document, the summary report for the 1995 survey project, and the 2003 guidebook, Exploring Historic Jefferson City.

They are typical examples of the Commercial Buildings property type in form and function, and as such are significant in the area of COMMERCE. Like most historic commercial buildings on the Southside, most of the buildings in the district utilize the common vernacular commercial building form of the two-part commercial block, with public spaces on the ground floor and residences or offices above. They also follow the overall a trend of utilizing typical vernacular Missouri-German elements on earlier buildings and more mainstream styling on those built later in the 20th century. The oldest building in the district, the 1892 Nieghorn House, for example, has the same type of red brick walls, segmental arched windows, ornamental brick cornice that were commonly used on early Missouri-German houses. Most others are simpler, with straight topped windows and relatively plain facades, although ornamental brick cornices were used on several early 20th buildings as well.

The district is also significant in the area of ETHNIC HERITAGE: EUROPEAN for its strong ties to the German-American community in Jefferson City. Eight of the nine buildings in the district were built by or for German-Americans, and the vast majority of the businesses there were operated by German-Americans for extended periods of time. The Schmidt family was in business there for three decades or more, the Walz family, for half a century, and the Busch family, for over a hundred years. The South Side Barber Shop has also had the same function for a century, albeit under different owners and in a building that was transformed in 1951. That type of longevity has been continued in modern times as well, with the fifty year tenure of the Wel-Com-Inn.

In recent years, the cultural heritage of the neighborhood has been promoted by the Old Munichburg Association, a local group organized in 2000 to preserve and promote Munichburg and its German heritage. The Association holds an annual Oktoberfest, which has raised thousands of dollars over the years to improve streetscapes in the neighborhood and encourage economic development there.

United States Department of the Interior
National Park Service

National Register of Historic Places
Continuation Sheet

Section number 8 Page 19

Munichburg Commercial Historic District
Historic Southside (Munichburg) Multiple Property Submission
Jefferson City, Cole County, MO

A growing interest in historic preservation in the area bodes well for the future of the district buildings. Rehabilitation work has already begun on 124 E. Dunklin, where modern brick facing has been removed from the ground floor, and plans for full rehabilitations are underway for the rest of that building, along with the largest building in the district, the Neighorn House at 120-122 E. Dunklin. The owners of the Wel-Com-Inn are also considering removing modern sheathing from the Dunklin Street façade and there is a renewed interest in the history of the neighborhood. The Munichburg Commercial Historic District is a significant link to that history.

Appendix: Individual Property information.

Sources include inventory forms prepared by Urbana Group in 1995, City Directories, Sanborn Maps, and published sources.

1.) 114-118 E. Dunklin. South Side Barber Shop, ca. 1893, current form: 1951.

Built ca. 1893, and remodeled to its current form in 1951, according to a newspaper ad announcing the grand reopening. It continues to operate as the Southside Barber Shop today, and has continually housed a barber shop since at least 1908.

1908 Sanborn

114 Barber

116 Meat

118 Harness

1908-09 Directory

114 E. F. Buehrle

116 W. J. Meier (Meat)

1916 Sanborn

114 Barber

116 Produce, poultry, eggs

118 Harness

United States Department of the Interior
National Park Service

National Register of Historic Places
Continuation Sheet

Section number 8 Page 20

Munichburg Commercial Historic District
Historic Southside (Munichburg) Multiple Property Submission
Jefferson City, Cole County, MO

1917

114 Wm. Meister

116 Vacant

118 not listed

Census records show that Meister was a barber in 1930 census, and was living with Charles Purzner and family in 1910.

1931

114 Hubert Herigon, barber

116 South Side Produce Co.

118 Poole & Creber Meats

1943

114 South Side Beauty Shop

116 St. George Laundry

118 Dunlop Tire and Rubber Co.

1951 Newspaper ad shows that the newly remodeled building reopens with Southside Barber and Beauty Shop. That project involved widening the barber shop and completely rebuilding the façade.

2009 South Side Barber Shop still in business at 114.

2.) 120-122 E. Dunklin. Nieghorn House Hotel, 1892.

Architect and Builder: Henry J. Wallau, for Bavarian Immigrant John Nieghorn

1897 120: Louis Sachs, harness maker

122: Nieghorn House Hotel, with saloon

1908 120: South Side Saloon & Hotel, G.C. & Margaret Bassmann

122: South Side Laundry, John & Estelle Burns

1915 120: South Side Hotel, Schneider & Raithel Saloon

1923 still South Side Hotel on Sanborn

1925 120: Kroger Grocery Co.

122: Bassmann Apartments

1935 120: Bassmann Apartments

United States Department of the Interior
National Park Service

National Register of Historic Places
Continuation Sheet

Section number 8 Page 21

Munichburg Commercial Historic District
Historic Southside (Munichburg) Multiple Property Submission
Jefferson City, Cole County, MO

122: Albert E. Bogg, restaurant

3.) 124 E. Dunklin. Schmidt Shoe Store, ca. 1908.

1908 John C. & Josephine Schmidt, shoe store & residence
1915 J.C. Schmidt & Sons Shoes, John C. & Josephine Schmidt residence
1925 John C. Schmidt & Sons, South Side Shoe Shop
1935 Schmidt's Shoe Store, Mrs. Josephine Schmidt residence

4.) 126 E. Dunklin. Southside Dry Goods, ca. 1918.

1925 South Side Dry Goods Company (J.C. Schmidt, Jr.)
1935 Same

Note: One of the two second floor apartments served as the home to John Jacob (Chicken) Schmidt during the period of significance.

5.) 128 E. Dunklin. Milo H. Walz Hardware Store, ca. 1924.

Walz started in the frame building and then built this one.
1915 August Henry; Doerhoff & Garretson New & Second-Hand Shop
1925 South Side New & Second-Hand Furniture, Milo Walz
1935 Milo H. Walz, furniture

6.) 704 Madison—(Back of 128 E. Dunklin property) Built in 1936 for Milo H. Walz. Included because it is part of the same legal parcel as 128, and is linked with a second floor bridge. There is also a bridge between it and another building on Madison, but they are separate legal parcels.

2009 Blattner's Furniture

7.) 130 E. Dunklin. Henry Schmidt Grocery Store, ca. 1908.

Built ca. 1909
1908 Henry Schmidt, grocer
1915 Henry Schmidt, grocer
1925 The Adolph Schwartz Market
1935 Kroger Grocery and Baking Company; Fred M. Fulkerson and Courtland Campbell resided at 130-1/2
1959 Wel-Com-Inn
2009 Wel-Com-Inn

United States Department of the Interior
National Park Service

National Register of Historic Places
Continuation Sheet

Section number 8 Page 22

Munichburg Commercial Historic District
Historic Southside (Munichburg) Multiple Property Submission
Jefferson City, Cole County, MO

8.) 610 Madison. Central Dairy, ca. 1935, current form: ca. 1942.

Part of the building was built ca. 1935 and it was expanded to its current size before 1943. Directories show that Central Dairy operated in a small building at 108 E. Dunklin in 1932 and 1933. That building, which housed a tire repair store in 1939, is no longer extant.

2009 Central Dairy

9.) 620 Madison. Busch's Florist, ca. 1935. (Greenhouse ca. 1890 for Busch and Purzner)

Greenhouse is older and may be part of greenhouse seen in a late 19th century photo. The two-story commercial building was built between 1923-1939, survey says ca. 1935.

1897 Busch & Purzner Florists

1908 Capitol City Green House, Hugo Busch proprietor

1915 Capitol City Green House

1925 Capitol City Green House

1935 Capitol City Green House

2009 Busch's Florist

United States Department of the Interior
National Park Service

National Register of Historic Places
Continuation Sheet

Section number 9 Page 23

Munichburg Commercial Historic District
Historic Southside (Munichburg) Multiple Property Submission
Jefferson City, Cole County, MO

SOURCES

- Beetem, Jane. "Historic Southside (Munichburg) Multiple Property Submission." Jefferson City: State Historic Preservation Office, 2002.
- Ford, James E. History of Jefferson City. Jefferson City: The New Day Press, 1938.
- Jefferson City News and Tribune. August 5, 1951, p. 7. (Advertisement for Southside Barber and Beauty Shop.)
- Kremer, Gary. Exploring Historic Jefferson City. Jefferson City: City of Jefferson, 2003.
- Novak, Alice Edwards, and Karen Lang Kummer. "Historic Southside: Jefferson City, Missouri." Architectural and Historical Survey, 1995. Report and inventory forms on file with the State Historic Preservation Office, Jefferson City, MO.
- Sanborn-Perris Map Company. Sanborn Fire Insurance Maps for Jefferson City. 1898, 1908. 1916, 1923, 1939.
- Schroeder, Walter A. "Information About 100 Block of East Dunklin," Typescript prepared for Dunklin Properties, LLC, 2008.
- _____. Personal Interview with Albert Case, grandson of John Conrad (Hans) Schmidt. February, 2006.
- United State Census Records, various years. (Accessed online at Ancestry.com, December 2008-January 2009.)

**Munichburg Commercial Historic District
Historic Southside (Munichburg) Multiple Property Submission
Jefferson City, Cole County, MO**

10. Geographical Data

Acreage of Property: _____ 1.6 acres _____

UTM References

A. Zone	Easting	Northing	B. Zone	Easting	Northing
15	571890	4269250			
C. Zone	Easting	Northing	D. Zone	Easting	Northing

[] See continuation sheet

Verbal Boundary Description

(Describe the boundaries of the property on a continuation sheet.)

Boundary Justification

(Explain why the boundaries were selected on a continuation sheet.)

11. Form Prepared By

name/title Debbie Sheals
organization Private Contractor date January, 2009
street & number 29 S. 9th St. Suite 204 telephone 573-874-3779
city or town Columbia state Missouri zip code 65201

Additional Documentation

Submit the following items with the completed form:

Continuation Sheets

Maps

- A **USGS map** (7.5 or 15 minute series) indicating the property's location.
- A **Sketch map** for historic districts and properties having large acreage or numerous resources.

Photographs

Representative **black and white photographs** of the property.

Additional Items

(Check with the SHPO or FOP for any additional items)

Property Owner

(Complete this item at the request of SHPO or FPO.)

name _____ see continuation sheet _____
street & number _____
telephone _____
city or town _____ state _____ zip code _____

United States Department of the Interior
National Park Service

National Register of Historic Places
Continuation Sheet

Section number 10, photographs Page 24

Munichburg Commercial Historic District
Historic Southside (Munichburg) Multiple Property Submission
Jefferson City, Cole County, MO

Verbal Boundary Description

The boundaries of the district are shown as a heavy dashed line in Figure Two. They correspond to the combined legal parcels associated with the properties of the district.

Boundary Justification

The current boundaries encompass all of the land currently associated with the buildings of the district.

Photographs

The following information is the same for all photographs:

Munichburg Commercial Historic District
Dunklin and Madison Streets, Jefferson City
Cole County, Missouri
Debbie Sheals
Photos were taken

List of Photographs

See photo key for description of camera angle.

1. Looking south on E. Dunklin St., with all of the Dunklin Street properties in the district.
2. Closer streetscape, E. Dunklin St.
3. 120-122 E. Dunklin.
4. Window detail of 120-122 E. Dunklin
5. Left to Right: 128, 126, 124, 122 E. Dunklin
6. Left to Right: 130, 128, 126 E. Dunklin
7. Left to Right: 126 (with 2nd floor sign), 124, 122 E. Dunklin
8. Looking southwest on Madison, 130 E. Dunklin in foreground
9. Looking west on Dunklin
10. Northeast side of Dunklin, looking out of boundaries. (Back of 620 Madison is on the right.)
11. 620 Madison
12. 610 Madison

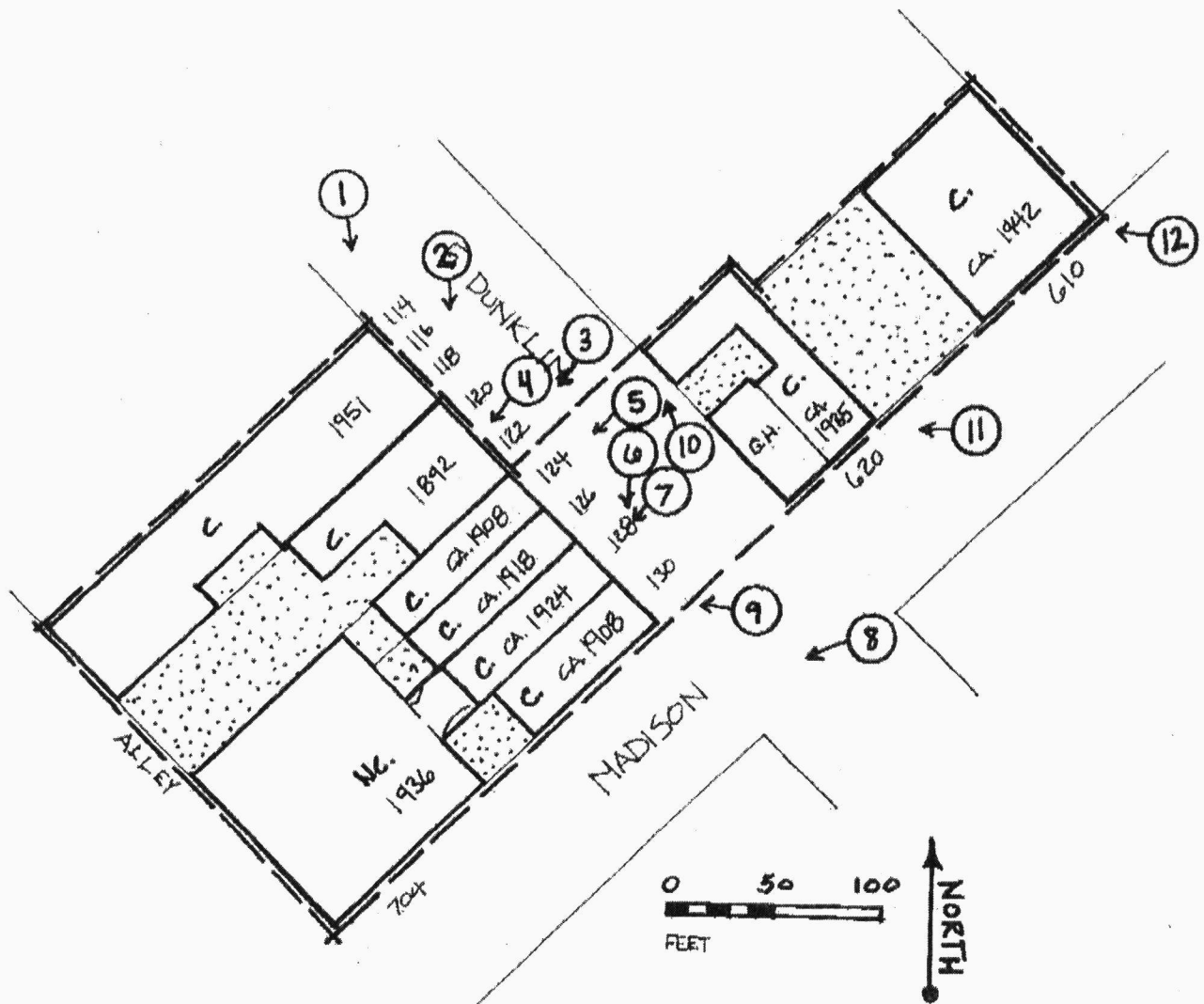
United States Department of the Interior
National Park Service

National Register of Historic Places
Continuation Sheet

Section number photographs Page 25

Munichburg Commercial Historic District
Historic Southside (Munichburg) Multiple Property Submission
Jefferson City, Cole County, MO

Photo Key.



United States Department of the Interior
National Park Service

National Register of Historic Places
Continuation Sheet

Section number owners Page 26

Munichburg Commercial Historic District
Historic Southside (Munichburg) Multiple Property Submission
Jefferson City, Cole County, MO

Property Owners

114-116-118 E. Dunklin St.
Dunklin Street Properties, LLC
214 Prodo Drive, Suite 101
Jefferson City, MO 65102
Contact person: Larry Kolb
Ph. 573-893-7320

128 E. Dunklin St. / 704 Madison
Milo H. Walz, Inc.
PO Box 1278
Jefferson City, MO 65102
Contact person: Mark Wilroth
Ph. 573-301-7440

120-122 E. Dunklin St.
Dunklin Street Properties 120, LLC
214 Prodo Drive, Suite 101
Jefferson City, MO 65102
Contact person: Larry Kolb
Ph. 573-893-7320

130 E. Dunklin St.
Vivion Joyce Dallmeyer Trust
PO Box 96
Jefferson City MO 65102
Contact person: Steve Dallmeyer
Ph. 573-680-0010

124 E. Dunklin St.
Dunklin Street Properties 124, LLC
214 Prodo Drive, Suite 101
Jefferson City, MO 65102
Contact person: Larry Kolb
Ph. 573-893-7320

610 Madison St.
Central Dairy Co.
Jefferson City, MO 65101
Contact person: Chris Hackman
Ph. 573-635-6148

126 E. Dunklin St.
Mason's Place, LLC
Jefferson City, MO 65101
Contact person: Patty Mason
Ph. 573-690-3615

620 Madison St.
Madison Street Management LLC
620 Madison St.
Jefferson City, MO 65101
Contact person: John Pelzer
Ph. 573-619-0457

UNITED STATES DEPARTMENT OF THE INTERIOR
NATIONAL PARK SERVICE

NATIONAL REGISTER OF HISTORIC PLACES
EVALUATION/RETURN SHEET

REQUESTED ACTION: NOMINATION

PROPERTY NAME: Munichburg Commercial Historic District

MULTIPLE NAME: Southside Munichburg, Missouri MPS

STATE & COUNTY: MISSOURI, Cole

DATE RECEIVED: 5/22/09 DATE OF PENDING LIST: 6/08/09
DATE OF 16TH DAY: 6/23/09 DATE OF 45TH DAY: 7/05/09
DATE OF WEEKLY LIST:

REFERENCE NUMBER: 09000477

REASONS FOR REVIEW:

APPEAL: N DATA PROBLEM: N LANDSCAPE: N LESS THAN 50 YEARS: N
OTHER: N PDIL: N PERIOD: N PROGRAM UNAPPROVED: N
REQUEST: N SAMPLE: N SLR DRAFT: N NATIONAL: N

COMMENT WAIVER: N

ACCEPT RETURN REJECT 7.1.09 DATE

ABSTRACT/SUMMARY COMMENTS:

**Entered in
The National Register
of
Historic Places**

RECOM./CRITERIA _____

REVIEWER _____ DISCIPLINE _____

TELEPHONE _____ DATE _____

DOCUMENTATION see attached comments Y/N see attached SLR Y/N

If a nomination is returned to the nominating authority, the nomination is no longer under consideration by the NPS.



1.) Munichburg Commercial Historic District, Jefferson City, MO



2) Munichburg Commercial Historic District, Jefferson City, MO



JIMMY'S

New and Used

PHONE

120

KING'S
PHOTO

120

3.) Munichburg Commercial Historic District, Jefferson City, Mo



4.7 Munichburg Commercial Historic District, Jefferson City, Mo



RIGHT LANE
MUST
TURN RIGHT

Quality
Meats

HART'S

HART'S
New & Used
STOP

PHONE

UPPER

5.7 Munichburg Commercial Historic District, Jefferson City, MO



Classic American Bar

RIGHT LANE
MUST
TURN RIGHT

Blattner

Bachmeister

Wagon

Blattner's Bar & Grill
1000 N. 1st St.
Blattner's Bar & Grill
Blattner's Bar & Grill

(e.) Munichburg Commercial Historic District, Jefferson City, Mo



Classic American Bar

THE GREAT PLACE
OLD MUNCHING
PIZZA & PUB

124 A

124

JIMMY'S
New and Used
SHOP

PHONE

1.) Munichburg Commercial Historic District, Jefferson City, Mo



8.) Munichburg Commercial Historic District, Jefferson City, MO

9.) Munichburg Commercial Historic District, Jefferson City,
MO



SAR-YOP

Busch's Florist
636-7113

Busch's Florist
636-7113

636-7113

Busch's Florist
636-7113

10.) Munichburg Commercial Historic District, Jefferson City, MO



Borch's

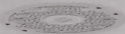
Borch's Place

FOR RENT
ALL
SIZES
CALL
303

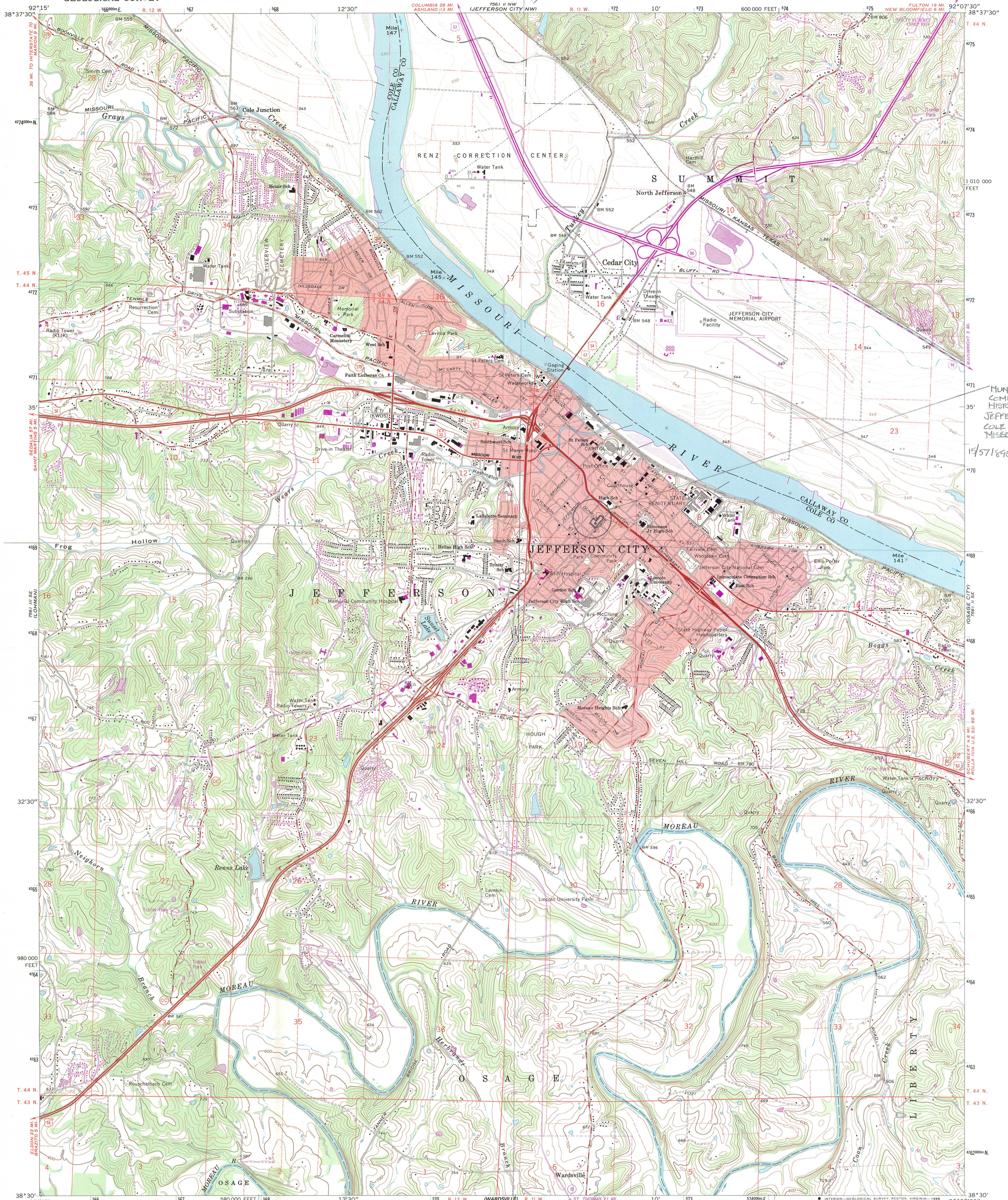
11.) Munichburg Commercial Historic District, Jefferson City, Mo



CENTRAL DAIRY

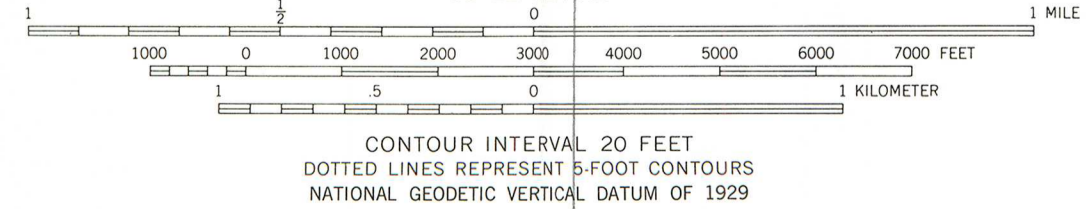
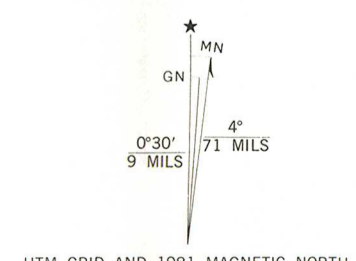


12.) Munichburg Commercial Historic District, Jefferson City,
MO



MUNICHBERG
COMMERCIAL
HISTORIC DISTRICT
JEFFERSON CITY
COLE COUNTY
MISSOURI
1571890/428250

Mapped, edited, and published by the Geological Survey
Control by USGS and USC&GS
Topography by photogrammetric methods from aerial
photographs taken 1965 and planetable surveys 1967
Supersedes map dated 1939
Polyconic projection. 1927 North American datum
10,000-foot grid based on Missouri coordinate system, central zone
1000-meter Universal Transverse Mercator grid ticks,
zone 15, shown in blue
Red tint indicates area in which only landmark buildings are shown
To place on the predicted North American Datum 1983
move the projection lines 1 meter south and
14 meters east as shown by dashed corner ticks
There may be private inholdings within the boundaries of
the National or State reservations shown on this map



ROAD CLASSIFICATION

Heavy-duty	Light-duty
Medium-duty	Unimproved dirt
U.S. Route	State Route

THIS MAP COMPLIES WITH NATIONAL MAP ACCURACY STANDARDS
FOR SALE BY U. S. GEOLOGICAL SURVEY, DENVER, COLORADO 80225, OR RESTON, VIRGINIA 22092,
AND THE DIVISION OF GEOLOGY AND LAND SURVEY
MISSOURI DEPARTMENT OF NATURAL RESOURCES, ROLLA, MISSOURI 65401
A FOLDER DESCRIBING TOPOGRAPHIC MAPS AND SYMBOLS IS AVAILABLE ON REQUEST

Revisions shown in purple compiled from aerial
photographs taken 1974 and 1980. Map edited 1981
This information not field checked

JEFFERSON CITY, MO.
38092-E2-TF-024
1967
PHOTO REVISÉ 1981
DMA 7561 II SW-SERIES V879

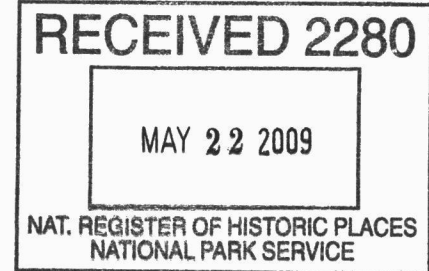




Jeremiah W. (Jay) Nixon, Governor • Mark N. Templeton, Director

DEPARTMENT OF NATURAL RESOURCES

www.dnr.mo.gov



May 19, 2009

Ms. Janet Matthews
United States Dept. of the Interior
National Register of Historic Places
1201 "I" Street NW, 6th Floor
Washington, DC 20005

Dear Ms. Matthews:

Please find enclosed the following submission from Missouri for nomination to the National Register of Historic Places:

Munichburg Commercial Historic District
Historic Southside (Munichburg) MPDF
Cole County, Missouri

Our state review board, the Missouri Advisory Council on Historic Preservation, approved the above nomination on May 15, 2009. All owners and appropriate elected public officials were notified and provided at least thirty (30) days to comment on the above proposed nomination in accordance with Section 36CFR60.6, interim regulations, using the exact notification format recommended by the National Register. No objection letters were received.

The City of Jefferson City, as part of its responsibilities as a Certified Local Government, was provided an opportunity to review the proposed nomination prior to its presentation to the state review board. No letters from the local commission or mayor were received.

If you have any questions concerning this submission, please contact Tiffany Patterson of my staff at 573/751-7800, tiffany.patterson@dnr.mo.gov, or at the State Historic Preservation Office, P.O. Box 176, Jefferson City, Missouri 65102.

Sincerely,

STATE HISTORIC PRESERVATION OFFICE

A handwritten signature in cursive script that reads "Mark A. Miles".

Mark A. Miles, Director and
Deputy State Historic Preservation Officer

Enclosures: as stated