

United States Department of the Interior
National Park Service

National Register of Historic Places
Registration Form



This form is for use in nominating or requesting determinations for individual properties and districts. See instructions in *How to Complete the National Register of Historic Places Registration Form* (National Register Bulletin 16A). Complete each item by marking "x" in the appropriate box or by entering the information requested. If an item does not apply to the property being documented, enter "N/A" for "not applicable." For functions, architectural classification, materials, and areas of significance, enter only categories and subcategories from the instructions. Place additional entries and narrative items on continuation sheets (NPS Form 10-900a). Use a typewriter, word processor, or computer, to complete all items.

1. Name of Property

historic name Inter-State Building

other name/site number N/A

2. Location

street & town 417 E. 13th Street/1300 Locust Street N/A not for publication

city or town Kansas City N/A vicinity

state Missouri code MO county Jackson code 095 zip code 64106

3. State/Federal Agency Certification

As the designated authority under the National Historic Preservation Act, as amended, I hereby certify that this nomination request for determination of eligibility meets the documentation standards for registering properties in the National Register of Historic Places and meets the procedural and professional requirements set forth in 36 CFR Part 60. In my opinion, the property meets does not meet the National Register criteria. I recommend that this property be considered significant nationally statewide locally. (See continuation sheet for additional comments.)

Mark A. Miles May 8, 2008
Signature of certifying official/Title Mark A. Miles/Deputy SHPO Date

Missouri Department of Natural Resources
State or Federal agency and bureau

In my opinion, the property meets does not meet the National Register criteria. (See continuation sheet for additional comments.)

Signature of certifying official/Title Date

State or Federal agency and bureau

4. National Park Service Certification

I hereby certify that the property is:

- entered in the National Register.
 - See continuation sheet.
- determined eligible for the National Register
 - See continuation sheet.
- determined not eligible for the National Register.
- removed from the National Register.
- other, (explain:) _____

104
Carlson H. Beall 6-12-08
Signature of the Keeper Date of Action

Inter-State Building
Name of Property

Jackson County, MO
County and State

5. Classification

Ownership of Property
(check as many boxes as apply)

- private
- public-local
- public-State
- public-Federal

Category of Property
(check only one box)

- building(s)
- district
- site
- structure
- object

Number of Resources within Property
(Do not include previously listed resources in the count.)

Contributing	Noncontributing	
1	0	buildings
0	0	sites
0	0	structures
0	0	objects
1	0	Total

Name of related multiple property listing
(Enter "N/A" if property is not part of a multiple property listing.)

N/A

Number of contributing resources previously listed in the National Register

0

6. Function or Use

Historic Function
(Enter categories from instructions)

COMMERCE: professional

Current Function
(Enter categories from instructions)

COMMERCE: professional

7. Description

Architectural Classification
(Enter categories from instructions)

LATE 19TH AND EARLY 20TH CENTURY AMERICAN MOVEMENTS:
Chicago Style

Materials
(Enter categories from instructions)

foundation concrete
walls brick
terra cotta
roof other: tar and gravel
other

Narrative Description

(Describe the historic and current condition of the property on one or more continuation sheets.)

See continuation sheet(s) for Section No. 7

United States Department of the Interior
National Park Service

National Register of Historic Places Continuation Sheet

Section number 7 Page 1

INTER-STATE BUILDING
JACKSON COUNTY, MISSOURI

SUMMARY

The Inter-State Building located at 417 E. 13th Street, Kansas City, Jackson County, Missouri, was designed by James C. Sunderland, Kansas City, Missouri in 1914. Harvey Stiver, a Kansas City contractor, constructed the six-story building in 1914-1915. Designed by Sunderland in the Chicago Style, the reinforced concrete, 50 foot x 132 foot, Inter-State building is divided into six bays at the main or north façade and two bays at the east and west facades. At the main and east facades, the first story storefront level features cream-colored brick in contrast to the darker brick of the upper stories. A Sullivanesque decorated stringcourse separates the storefront level from the upper stories, while a prominent water table in the same vocabulary rests below the roofline. In good condition, the Inter-State Building has retained its integrity of location, design, setting, materials, workmanship, feeling and association. Its character-defining physical features, exterior materials and interior spaces are representative of the period of historic significance. The intact original Sullivanesque ornamentation, the polychromatic effect and the overall essential physical features, including fenestration and door locations (original to the building) are particularly vital to the significance of the building. With the revitalization of the city's central core that has resulted in the demolition of several early 20th century buildings, it is important that the Inter-State building is extant, representing a type of commercial facility that once dominated the streetscape in proximity to the city's civic center. Standing directly to the west of the Inter-State building is the Mutual Building, a similarly styled commercial building dating from 1919 and designed by J. C. Sunderland; to the south and north are surface parking lots.

ELABORATION

The Inter-State building is located in the Central Business District of Kansas City, in proximity to the Civic Center's Jackson County courthouse. The main façade faces north. A deeply recessed entrance (modified from the original design), placed slightly off-center is reached by a series of concrete stairs flanked by curved brass railings. The non-original double-leaf door, flanked by large sidelights and a wide transom is partially obscured by decorative brass screens. Planters are placed against the east and west walls of the entry recess. The original entrance, as illustrated in a c. 1928 historic photograph shows that the recessed entrance featured a pair of sidelights that flanked the series of stairs leading to the main door.¹ The words, "INTER-STATE BUILDING" in gold, placed on a narrow frieze lined in small dentils, crown the main entrance. Bordering the whole is a pair of Doric half pilasters embellished with Sullivanesque ornamentation, catouches and elongated mutules covered in gold leaf. Storefronts at the eastern bays of the north façade and the whole of the east façade are wood framed, plate glass with wide transoms. The materials and configuration of these storefront units are the same as illustrated in the c. 1928 photograph of the building. At the western three bays of the north façade, the storefront windows vary from the aforementioned storefront units. Here the windows are original tripartite wood frame with fixed center plate glass windows flanked by double-hung one-over-one wood sash units topped with operable transoms. Sills are terra cotta. Each unit is slightly recessed.

¹ The photograph also indicates that there may have been a canted entrance at the northeast corner.

United States Department of the Interior
National Park Service

National Register of Historic Places Continuation Sheet

Section number 7 Page 2

INTER-STATE BUILDING
JACKSON COUNTY, MISSOURI

Original basement windows below these units have been replaced with glass block.

A continuous Sullivanesque decorated stringcourse (that slightly projects above the main entrance) separates the storefront level from the upper stories. This upper zone displays contrasting brick and Chicago-style windows at the north and east façade. The tripartite units of the north facade match that of the configuration of the western-most storefront level windows (at the north facade) with their fixed center window flanked by double-hung, wood sash units with transoms; lug sills are terra cotta. The upper story windows at the east façade have been modified as the windows of the north façade, except that the center unit displays a thickly profiled mullion. Flanking units with operable transoms match that of the north façade. Wide brick spandrels and piers separate each window at each floor. The sixth, or terminating floor displays the same cream-colored brick as featured on the storefront level and with few exceptions the window configuration matches that of the lower levels. A continuous terra cotta sill stretches from the north to east facades, while a Sullivanesque embellished water table runs the same direction. A contrasting cross pattern in brick is placed at the top of each pier at the sixth story, each with a pair of mutules hanging from the sill course.

The south façade features a recessed stairwell bay at its center. Fenestration at this façade is generally two-over-two with a single unit at the second story, far east bay displaying a three-over-three configuration. There is no further articulation of this façade, except for a single-leaf man door at the western bay, reached by a long ramp from the east. The majority of the fenestration at the alley (west) façade is two-over two as featured on the south façade. Most units have been covered by security grates, especially at the lower levels.

More than likely, the connection to the Mutual Building, also designed by J. C. Sunderland (1919) was made in 1938 when the interiors of the Inter-State and Mutual buildings were remodeled. At this time the alley between the two buildings was filled in with a single bay, leaving a one-story aperture at the base of the addition.

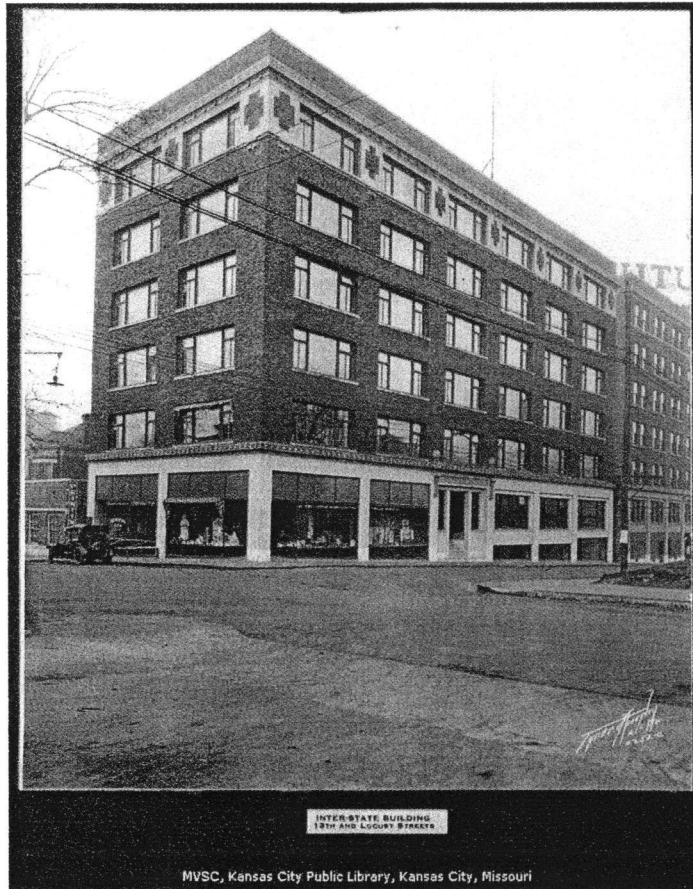
Although the original interior of the Inter-State building was designed with open floors, over the years, several building campaigns have introduced office partitions to accommodate various types of tenants. While these partitions are non-original, they have not altered historic spaces that were originally intended to remain open or sectioned-off in other ways. Therefore, the historic integrity of the interior has not been compromised.

United States Department of the Interior
National Park Service

National Register of Historic Places Continuation Sheet

Section number 7 Page 3

INTER-STATE BUILDING
JACKSON COUNTY, MISSOURI



Interstate Building c. 1928

Henry D. Green Scrapbook Collection:

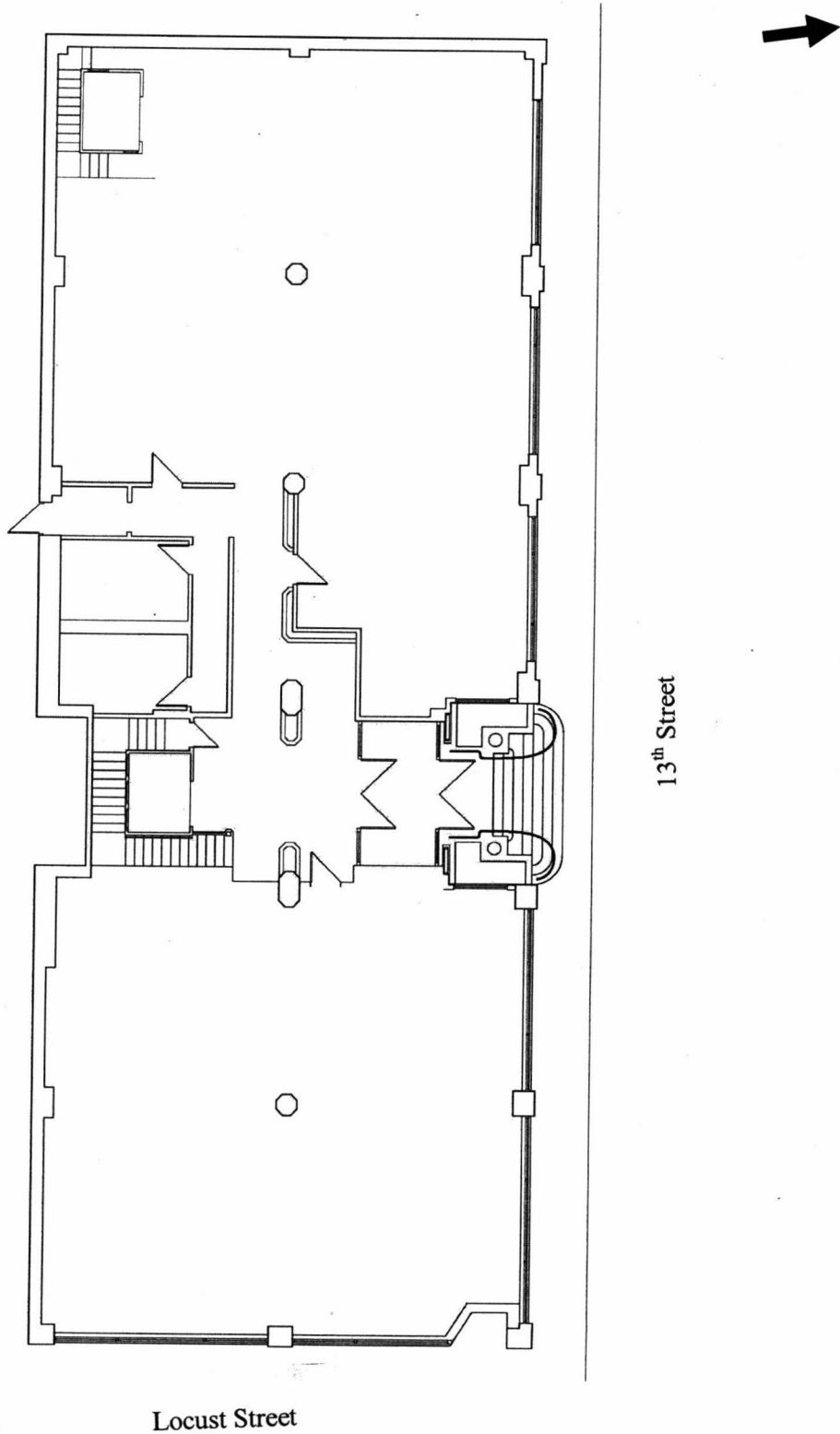
The Missouri Valley Room, Kansas City Public Library, Kansas City Missouri

United States Department of the Interior
National Park Service

National Register of Historic Places Continuation Sheet

Section number 7 Page 4

INTER-STATE BUILDING
JACKSON COUNTY, MISSOURI

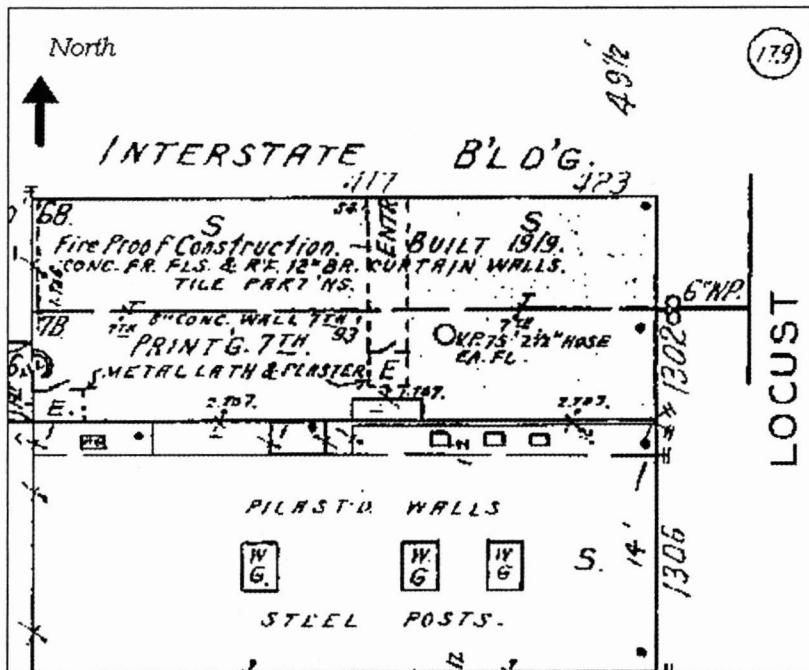


United States Department of the Interior
National Park Service

National Register of Historic Places Continuation Sheet

Section number 7 Page 5

INTER-STATE BUILDING
JACKSON COUNTY, MISSOURI



Sanborn Insurance Map, Kansas City, Missouri, 1939, Vol. 1 Plate 39.
(The date of construction is incorrect.)

Interstate Building
Name of Property

Jackson County, MO
County and State

8. Description

Applicable National Register Criteria

(Mark "x" in one or more boxes for the criteria qualifying the property for National Register listing.)

- A** Property is associated with events that have made a significant contribution to the broad patterns of our history.
- B** Property is associated with the lives of persons significant in our past.
- C** Property embodies the distinctive characteristics of a type, period, or method of construction or represents the work of a master, or possesses high artistic values, or represents a significant and distinguishable entity whose components lack individual distinction.
- D** Property has yielded, or is likely to yield, information important in prehistory or history.

Criteria Considerations

(Mark "x" in all the boxes that apply.)

Property is:

- A** owned by a religious institution or used for religious purposes.
- B** removed from its original location.
- C** a birthplace or grave.
- D** a cemetery.
- E** a reconstructed building, object, or structure.
- F** a commemorative property.
- G** less than 50 years of age or achieved significance within the past 50 years.

Narrative Statement of Significance

(Explain the significance of the property on one or more continuation sheets.)

See continuation sheet(s) for Section No. 8

9. Major Bibliographical References

Bibliography

(Cite the books, articles, and other sources used in preparing this form on one or more continuation sheets.)

Previous documentation on file (NPS):

- preliminary determination of individual listing (36 CFR 67) has been requested
- previously listed in the National Register
- previously determined eligible by the National Register
- designated a National Historic Landmark
- recorded by Historic American Buildings Survey # _____
- recorded by Historic American Engineering Record # _____

Areas of Significance

(enter categories from instructions)

ARCHITECTURE

Period of Significance

1915

Significant Dates

1915

Significant Persons

(Complete if Criterion B is marked above)

N/A

Cultural Affiliation

N/A

Architect/Builder

Sunderland, James C., architect

Stivers, Harvey, contractor

Primary location of additional data:

- State Historic Preservation Office
- Other State agency
- Federal agency
- Local government
- University
- Other Name of repository:

Public Library, Kansas City, Missouri

See continuation sheet(s) for Section No. 9

United States Department of the Interior
National Park Service

National Register of Historic Places Continuation Sheet

Section number 8 Page 6

INTER-STATE BUILDING
JACKSON COUNTY, MISSOURI

STATEMENT OF SIGNIFICANCE

The Inter-State building, designed in 1914 by James C. Sunderland and completed in 1915, is eligible for listing in the National Register of Historic Places for local significance under Criterion C in the area of ARCHITECTURE. Charles L. Merry, a local businessman, hired the architectural firm of J. C. Sunderland to design a six-story reinforced concrete and brick building within the Central Business District of Kansas City, Missouri, at the southwest corner of Locust and 13th Street. Early in his career, James C. Sunderland was an associate of Louis Curtiss, and later formed the firm of Edwards and Sunderland. By 1914, Sunderland was in architectural practice on his own. During his years in private practice, he designed many warehouses and office buildings including the H.D. Lee Wholesale Building (NR listed within the Historic Freight House District), the Mutual Building on Locust Street (adjacent to the Inter-State Building to the west) and the Campbell Building at Sixteenth and Walnut Streets.² In examining the extant commercial properties designed by Sunderland in Kansas City, the Inter-State Building remains his best-known commercial design, incorporating vocabulary of Chicago Style architecture and Sullivanesque ornamentation. Unlike many commercial properties designed during the early decades of the 20th century, the upper floors of the Inter-State building had no internal partitions, as the anticipated firms that were to occupy the building would lease most or all of an entire floor.³ The objective was to provide “adequate floor space at an economical cost.” Sunderland, in designing the Inter-State building undoubtedly was influenced by Curtiss’s 1908-1909 Boley building, one of the earliest glass curtain wall buildings in the world. Likewise, Sunderland’s Inter-State building is of a curtain wall construction where the brick veneer is supported on a floor-by-floor basis by a metal structural grid. Thus, this building represents a significant period and method of construction—namely the Chicago style and curtain wall composition. The period of significance is 1915, the date of the completion of the Inter-State building.

ELABORATION

The Career of James C. Sunderland and his Commercial Building Design

James C. Sunderland’s career can generally be traced through the knowledge of his buildings in Kansas City, yet the facts surrounding his life remain unknown at the time of this writing. Kansas City, city directories do not list Sunderland prior to 1902, yet contemporary newspaper articles and historians have stated that he worked for Louis S. Curtiss anywhere from the 1890s to 1901-1902. In his obituary, it stated that Sunderland “was associated for some years with Louis Curtiss.”⁴ After his employ with Curtiss, Sunderland formed a partnership with Samuel E. Edwards, which lasted from 1903-1913. Subsequently, Sunderland practiced on his

² *The Kansas City Star* 25 December 1934. Microfilm. Special Collections; The Missouri Valley Room, Kansas City Public Library, Kansas City Missouri.

³ *Ibid*

⁴ *The Kansas City Star* 25 December 1934. See also Elaine Ryder, “Kansas City Masonic Temple,” National Register of Historic Places Nomination, May 2, 1980.

United States Department of the Interior
National Park Service

National Register of Historic Places Continuation Sheet

Section number 8 Page 7

INTER-STATE BUILDING
JACKSON COUNTY, MISSOURI

own until 1921, when he joined with Walter Besecke. The firm of Sunderland and Besecke dissolved three years later. From that point on it appears that Sunderland practiced alone for the remainder of his career, up until his death from an auto accident in 1934, at the age of 70.⁵

Sunderland's early work in Kansas City when he was partnered with Edwards, is represented by the Kansas City Masonic Temple (1909-1911), the Maples Apartments (1905-1906) and the New England Apartments (1905), all listed in the National Register. The Masonic Temple incorporated vocabulary of the Classical Revival and the Beaux-Arts, while the apartment buildings impart a vernacular flavor influenced by Beaux Arts and Prairie style motifs. For the purpose of this nomination, only the commercial work of Sunderland will be explored, so that the Inter-State building can best be examined as to its significance and importance as a distinctive property type by Sunderland.

There are twelve commercial properties in Kansas City designed by James C. Sunderland (either working alone or with various partners) that have been identified:

Property Name	Address	Date	Condition
Hershberger & Rosenthal Co.	917 Broadway	1909	Extant
Inter-State	417 E. 13 th Street	1914-1915	Extant
Boss Manufacturing Co.	700 Broadway	1917	Demolished
Buxton-Phillips Motor Corp.	1513 McGee Street	1918	Demolished
Mutual Drug Company	2001-2003 Main Street	1920	Demolished
Mutual Building	421 E. 13 th Street	1920	Extant
Beach Whittman Co.	1820-1822 McGee	1922	Extant
Wengert Hardware	1221 Grand	1922	Extant
Kansas City Title and Trust	927-935 Walnut Street	1922	Extant
Martin & DuFrain Auto Repair	1701 Baltimore Avenue	1922	Extant
Willow Springs Dairy Co.	2315 Harrison Street	1922	Demolished
Lewis Printing Company	307-11 W. 8 th Street	1930-1931	Demolished

It was in 1909, that Sunderland designed his first known commercial property, that of the building for Hershberger and Rosenthal Company, wholesalers in cigars and tobacco products, at 915 Broadway. This tapestry brick, reinforced concrete three-story building, located in the Wholesale District of Kansas City, is a small-scale commercial building with concrete stylized motifs hanging from the roof's cornice, suggesting Curtiss's influence. Over the years, this contributing building to the Wholesale District has been modified at

⁵ "Two Car Deaths in Day," *The Kansas City Star*, December 23, 1934.

United States Department of the Interior
National Park Service

National Register of Historic Places Continuation Sheet

Section number 8 Page 8

INTER-STATE BUILDING
JACKSON COUNTY, MISSOURI

the storefront level, while fenestration of the upper floors is non-original.

After Sunderland left Edwards to practice on his own, there are five known commercial properties that he designed; three are no longer extant. While little is known about the Boss Manufacturing Company building that was located at 700 Broadway (now the site of a surface parking lot), the Buxton Phillips Motor Company building (1513-1515 McGee) and the Mutual Drug Company (2001-2003 Main Street) were fairly straightforward designs by Sunderland. The Buxton Phillips Motor building was a two-story tapestry brick building with a central garage door and contrasting coping and stringcoursing. Except for the terra cotta surround at the main entrance, the Mutual Drug Company building was a fairly unexceptional building due to its utilitarian and practical use.

The Inter-State building, designed by Sunderland in 1914-1915, expresses not only his knowledge of the Chicago-style of architecture, but his understanding of the principles of curtain wall engineering. It stands as a “text-book” example of this American style of architecture, *a la* Louis Sullivan, featuring windows with fixed center pane flanked by working windows, terra cotta wall cladding and accents and curtain wall construction. “Because the exterior walls of a skeleton-framed structure do not have to bear tremendous weights, they can have large areas of glass, terra cotta or other non-supporting materials. Windows filled a great proportion of the wall space.”⁶ With the Inter-State Building, Sunderland further adhered to these principals with the fenestration that purports the most obvious of the Chicago School vocabulary—that of the fenestration. The “so-called Chicago window composed of a large fixed central pane flanked by two narrow casements that provided ventilation.”⁷ Also characteristic of this style is the storefront display windows placed at the ground level of the Inter-State Building. Along with other Kansas City Chicago Style building such as the Gumbel Building at 801 Walnut Street (John W. McKecknie, 1903-1904), the Boley Building, 1124-1130 Walnut Street (Louis S. Curtiss, 1908-1909), and the Mason Building, 1110 Grand Boulevard (George L. Brown, contractor; 1912), the Inter-State Building marks the best of the style with its overall organization, materials and method of construction. Compared to the aforementioned buildings, the Inter-State Building clearly adheres to Sullivan’s architecture in its composition of base, shaft and cornice, rather low relief ornamentation and emphasis on verticality in the wide brick piers that separate each bay (and terminate in a bold design) marked by the tripartite fenestration. When measured against the other known commercial properties by Sunderland, the Inter-State Building exceeds the other named properties in overall execution of design.

Excavation for the Inter-State building began in the winter of 1914 and construction was completed on June 1, 1915. When the building first opened, the Interstate Commerce Commission was located on the 6th floor. Most likely the building came to be known for this government agency as its main occupant. The Interstate

⁶ John C. Poppeliers, et. al. *What Style is it?* (Washington, D.C.: The Preservation Press, 1983), 72-75.

⁷ *Ibid.* Sunderland’s design called for flanking casement windows as evidenced in the c. 1928 photograph of the Inter-State Building included with this nomination.

United States Department of the Interior
National Park Service

National Register of Historic Places Continuation Sheet

Section number 8 Page 9

INTER-STATE BUILDING
JACKSON COUNTY, MISSOURI

Commerce Commission had previously been located in the YMCA building at 10th and McGee. The city directories of 1915 and 1916 were not cross referenced and only listed 1300 Locust as the Inter-State Building, with the Interstate Commerce Commission, a United States Division of Valuation located on the 6th floor. The Commission occupied the building for less than a decade. By the early 1920s the Interstate Commerce Commission moved into the new Federal Reserve Building located 925 Grand Avenue.⁸

By 1918 the building was occupied by several well-known Kansas City businesses. Gates City Press, publisher of the city directory, occupied the basement floor. Burns and McDonnell Engineering shared the fourth floor with a stock and bond company, Judson W. Ong. Hedrick and Huff Consulting Engineers occupied the fifth floor. J. C. Sunderland's office was also located in the Inter-State Building from 1919 through 1928.

By 1940 the building had been renovated. The floors contained as few as two offices and as many as seven. In 1940 Tuttle, Ayers and Woodward Company was located on the 6th Floor. Other occupants included attorneys, construction companies, insurance firms and a commercial artist. In 1947, the American Red Cross took over the building. Because of its direct proximity to the Jackson County Courthouse, and the Jackson County jail, the Inter-State Building was office space for many attorneys during the 1980s and through the 1990s. Another building designed during Sunderland's solo practice was the Mutual Building located at 421 E. 13th Street. Strikingly similar to the Inter-State building with its Sullivanesque terra cotta ornamentation, the building lacks the Chicago style influence in its fenestration design and is not engineered with a brick curtain wall like its counterpart to the east.

When Sunderland and Besecke were in practice, they were responsible for five commercial properties, all designed in 1922. The Beach Wittmann Company Building, located at 1820-1822 McGee Street is a one-story commercial style building with Gothic motif panels in terra cotta at the parapet wall. Also decorated with terra cotta (glazed) is the Wengert Hardware Company building (1221 Grand Boulevard), a four-story, commercial style property of steel frame construction. Unfortunately, it is slated for demolition with the re-urbanization of Kansas City's downtown core. The Martin & DuFrain Auto Repair building (1701 Baltimore), another one-story brick building by the firm has been considerably altered over the ensuing years with a modern storefront, altering its integrity. The last of the commercial properties from this era of Sunderland's career was the Willow Springs Dairy Company building (2315 Harrison). A two-story stucco design without any embellishments, the Willow Springs building was demolished to make way for the expansion of the University of Missouri-Kansas City's medical facilities. The Kansas City Trust Building (927 Walnut Street) is listed on the National Register of Historic Places for significance in the area of

⁸ *The Kansas City Directory, 1910-1950.* Microfilm. Special Collections; The Missouri Valley Room, Kansas City Public Library, Kansas City Missouri.

United States Department of the Interior
National Park Service

National Register of Historic Places Continuation Sheet

Section number 8 Page 10

INTER-STATE BUILDING
JACKSON COUNTY, MISSOURI

commerce, as the trust company for which it was built was the first title insurance company in the U.S. to operate outside of the state in which it was incorporated.

The last known commercial building from the later years of Sunderland's career is the Lewis Printing Company (307-11 W. 8th Street), constructed in 1930-1931. It is no longer extant.

Merry Optical Company

Charles L. Merry, owner and developer of the Inter-State Building (and the Mutual Building to the west), established Merry Optical Company in Kansas City in 1894. When Charles died in 1920, his son Fred became president of the company. In 1922 Merry Optical merged with the American Optical Company and went on to become the largest optical manufacturer in the world. Fred became the vice-president of American Optical the same year. Fred Merry died on November 30, 1934. His spouse Lillian Chouteau Merry, a descendant of the pioneer family from St. Louis, survived him.⁹ Both father and son were also real estate investors in addition to their optical company.

⁹ *The Kansas City Star* 30 November 1934. Microfilm. Special Collections; The Missouri Valley Room, Kansas City Public Library, Kansas City Missouri.

United States Department of the Interior
National Park Service

National Register of Historic Places Continuation Sheet

Section number 9 Page 11

INTER-STATE BUILDING
JACKSON COUNTY, MISSOURI

Selected Bibliography

Published

"Concrete Work Starts Tomorrow on 6-Story Merry Building at Thirteenth and Locust." *The Kansas City Star*, December 6, 1914.

City Directories, Kansas City, Missouri, 1890-1950.

Obituary. J. C. Sunderland. *The Kansas City Star*, December 25, 1934.

Obituary. Fred C. Merry. *The Kansas City Star*, November 30, 1934.

"Two Car Deaths In Day." *The Kansas City Star*, December 23, 1934.

Unpublished Sources

Building Permits for the Inter-State Building, Kansas City, Missouri. Landmarks Commission.

Inter-State Building. Photograph. Henry D. Dean Scrapbook Collection, Kansas City Missouri Public Library.

Landmarks Commission. J. C. Sunderland building data-base.

Landmarks Commission. "Inter-State Building," Kansas City Historic Resources Survey Form. May 1994.

Miszuzuk, Ed and Laura Norris. "Hershberger & Rosenthal Company," Historic Inventory, Landmarks Commission, 1985, 1994.

Piland, Sherry. "Historic Analysis Central Business District," Landmarks Commission, May 1986.

_____. "Beach Wittmann Company," Historic Inventory, Landmarks Commission, 1981.

_____. "Willow Springs Dairy Company," Historic Inventory, Landmarks Commission, 1981.

Piland, Sherry and Laura Norris. "Wengert Hardware," Historic Inventory, Landmarks Commission, 1985, 1994.

Piland, Sherry and Ellen Uguccioni. "Mutual Drug Company," Historic Inventory, Landmarks Commission, 1982.

_____. "Buston-Phillips Motor Corporation," Historic Inventory, Landmarks Commission, 1982.

United States Department of the Interior
National Park Service

National Register of Historic Places Continuation Sheet

Section number 9 Page 12

INTER-STATE BUILDING
JACKSON COUNTY, MISSOURI

Ryder, Elaine. "Kansas City Masonic Temple," National Register of Historic Places Nomination. May 2, 1980.

Uguccioni, Ellen. "Martin & DuFrain Auto Repair," Historic Inventory, Landmarks Commission, 1981.

_____. "Waggener Paint and Glass Company," Historic Inventory, Landmarks Commission, 1981.

Inter-State Building
Name of Property

Jackson County, MO
County and State

10. Geographical Data

Acreage of Property less than one acre

UTM References

(Place additional boundaries of the property on a continuation sheet.)

1 1/5 3/6/3/5/7/3 4/3/2/8/8/5/7
Zone Easting Northing

2 / / / / / / / / / / / / /
Zone Easting Northing

3 / / / / / / / / / / / / /
Zone Easting Northing

4 / / / / / / / / / / / / /
Zone Easting Northing

Verbal Boundary Description

(Describe the boundaries of the property.)

see attached

Property Tax No.

Boundary Justification

(Explain why the boundaries were selected.)

see attached

See continuation sheet(s) for Section No. 10

11. Form Prepared By

name/title Cydney E. Millstein and Mary Ann Warfield

organization Architectural and Historical Research, LLC date October 29, 2007

street & number 1537 Belleview Avenue telephone 816.472.4154

city or town Kansas City state MO zip code 64108

Additional Documentation

Submit the following items with the completed form:

Continuation Sheets

Maps A **USGS map** (7.5 or 15 minute series) indicating the property's location.

A **Sketch map** for historic districts and properties having large acreage or numerous resources.

Photographs: Representative **black and white photographs** of the property.

Additional items: (Check with the SHPO or FPO for any additional items)

Property Owner

name/title _____

street & number _____ telephone _____

city or town Kansas City state MO zip code _____

Paperwork Reduction Act Statement: This information is being collected for applications to the National Register of Historic Places to nominate properties for listing or determine eligibility for listing, to list properties, and to amend existing listings. Response to this request is required to obtain a benefit in accordance with the National Historic Preservation Act, as amended (16 U.S.C. 470 *et seq.*).

Estimated Burden Statement: Public reporting burden for this form is estimated to average 18.1 hours per response including time for reviewing instructions, gathering and maintaining data, and completing and reviewing the form. Direct comments regarding this burden estimate or any aspect of this form to the Chief, Administrative Services Division, National Park Service, P.O. Box 37127, Washington, DC 20013-7127; and the Office of Management and Budget, Paperwork Reductions Projects (1024-0018), Washington, DC 20503.

United States Department of the Interior
National Park Service

National Register of Historic Places Continuation Sheet

Section number 10 Page 13

**INTER-STATE BUILDING
JACKSON COUNTY, MISSOURI**

Verbal Boundary Description

Lot 1026 and north 6" of Lot 1027 Block 72 McGee's Addition, Kansas City, Jackson County, Missouri.

Boundary Justification

The nominated property includes the entire parcel historically associated with the Inter-State Building, Kansas City, Jackson County, Missouri.

Key to Photographs

Jeff Nichols, Photographer, October 25, 2007. Negatives are located at the office of AHR, LLC, Kansas City, MO

Number	Description and View
1.	Main or north facade; view facing south
2.	Main or north facade and east facade; view facing southwest
3.	General view on 13 th Street; view facing southeast
4.	Detail of main entrance, north facade; view facing south
5.	Detail of alley or west facade; view facing southeast
6.	South facade; view facing northeast
7.	South facade; view facing north, northwest
8.	East facade; view facing west
9.	First floor lobby; view facing northeast
10.	First floor lobby stairs; view facing southeast

UNITED STATES DEPARTMENT OF THE INTERIOR
NATIONAL PARK SERVICE

NATIONAL REGISTER OF HISTORIC PLACES
EVALUATION/RETURN SHEET

REQUESTED ACTION: NOMINATION

PROPERTY Inter-State Building
NAME:

MULTIPLE
NAME:

STATE & COUNTY: MISSOURI, Jackson

DATE RECEIVED: 5/07/08 DATE OF PENDING LIST: 5/23/08
DATE OF 16TH DAY: 6/07/08 DATE OF 45TH DAY: 6/20/08
DATE OF WEEKLY LIST:

REFERENCE NUMBER: 08000534

REASONS FOR REVIEW:

APPEAL: N DATA PROBLEM: N LANDSCAPE: N LESS THAN 50 YEARS: N
OTHER: N PDIL: N PERIOD: N PROGRAM UNAPPROVED: N
REQUEST: N SAMPLE: N SLR DRAFT: N NATIONAL: N

COMMENT WAIVER: N

ACCEPT RETURN REJECT 6-12-08 DATE

ABSTRACT/SUMMARY COMMENTS:

Entered in
The National Register
of
Historic Places

RECOM./CRITERIA _____

REVIEWER _____ DISCIPLINE _____

TELEPHONE _____ DATE _____

ABSTRACT/SUMMARY COMMENTS:

DOCUMENTATION see attached comments Y/N see attached SLR Y/N

If a nomination is returned to the nominating authority, the nomination is no longer under consideration by the NPS.



Interstate Building
417 E. 13th Street
Kansas City
Jackson County
Missouri



Interstate Building

417 E. 13th Street

Kansas City

Jackson County

Missouri

2



Interstate Building
417 E. 13th Street
Kansas City
Jackson County
Missouri

3



INTER-STATE BUILDING

FOUR
SEVENTH

EAST
FOURTH

Law Of
WILLIAM H.
A Professional C

Interstate Building

417 E. 13th Street

Kansas City

Jackson County

Missouri

4



Interstate Building
417 E. 13th Street
Kansas City
Jackson County
Missouri

5



Interstate Building

6

417 E. 13th Street

Kansas City

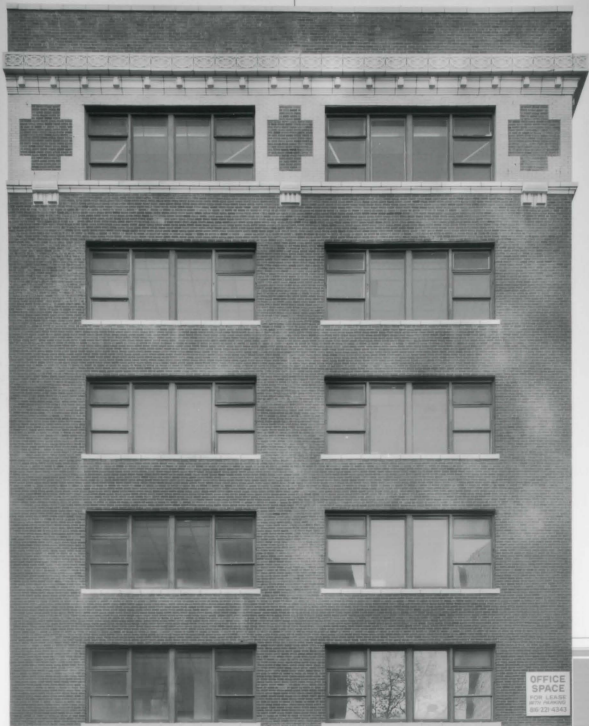
Jackson County

Missouri



7

Interstate Building
417 E. 13th Street
Kansas City
Jackson County
Missouri



OFFICE
SPACE
NOW LEASING
CALL 312-321-0444

13TH STREET GRILL & BAR

the
13th Street Grill & Bar
13th Street Grill & Bar
13th Street Grill & Bar
13th Street Grill & Bar



Inter-state Building
417 E. 13th Street
Kansas City
Jackson County
Missouri

No 8



Inter-State Buildings
417 E. 13th Street
Kansas City
Jackson County
Missouri

No. 9



INDUSTRIAL BUILDING
41 E. R. ST.

FIRST FLOOR
WILLIAM A. PACEY, P.E.

SECOND FLOOR

THIRD FLOOR

ROBERT L. HORN
MICHAEL J. HORN
DAVID M. HORN

Inter-state Building

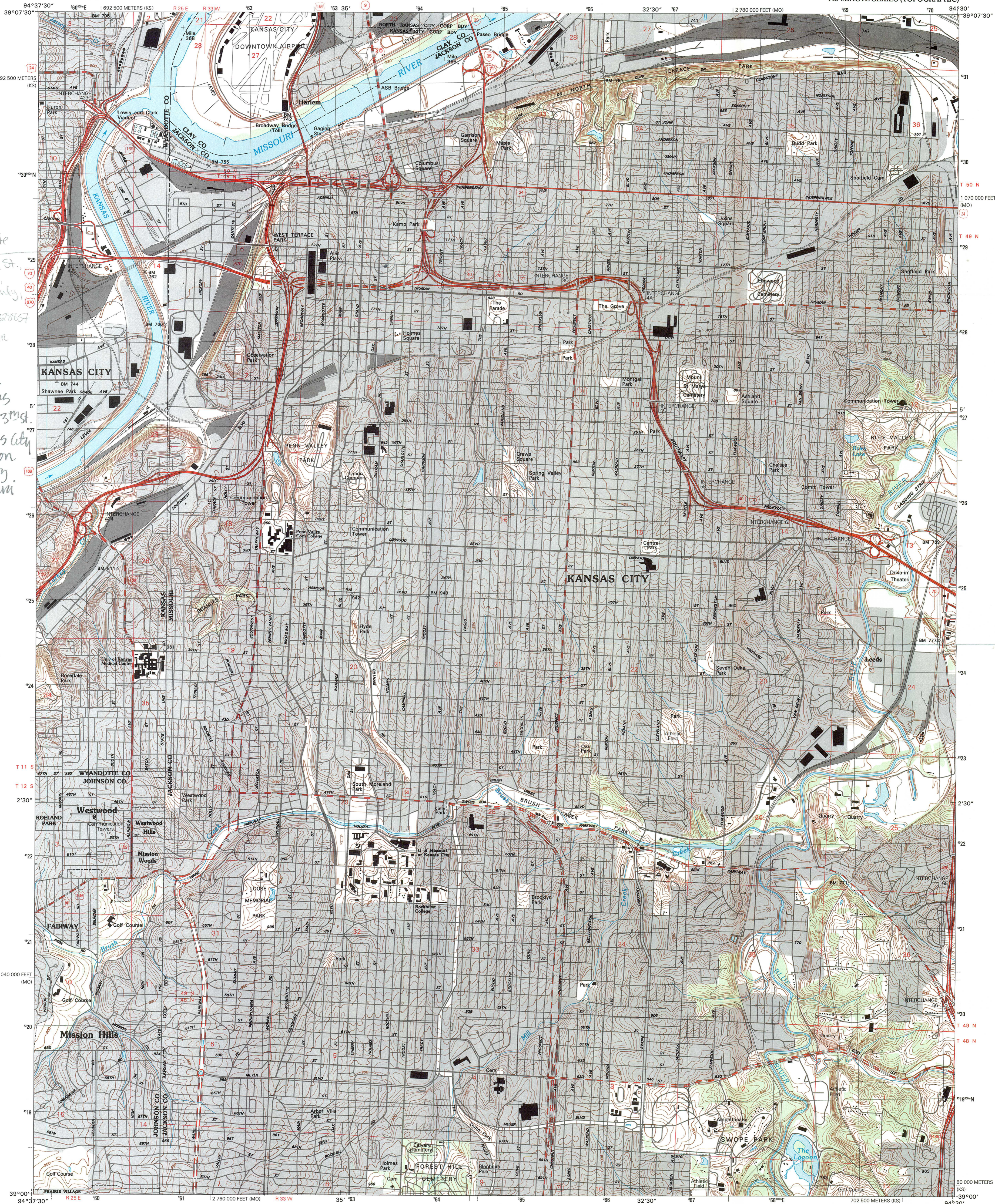
417 E. 13th Street

Kansas City

Jackson County

Missouri

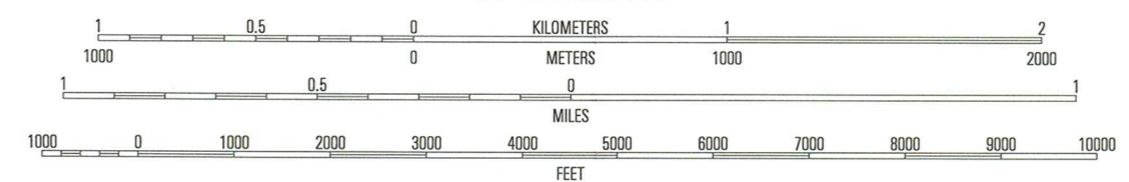
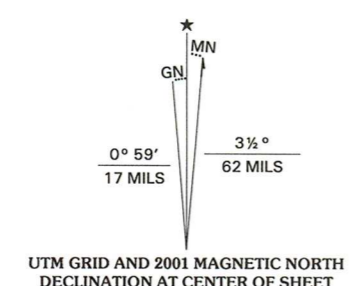
No. 10



Inter-State Building
417 E. 13th St.
Kansas City,
Jackson County,
Missouri
915/355734380657
x from the Boulder

Interstate Buildings
417 E 13th St.
Kansas City
Jackson County,
Missouri

Produced by the United States Geological Survey
Topography compiled 1934. Planimetry derived from imagery taken 1996 and other sources. Public Land Survey System and survey control current as of 1935. Boundaries current as of 2001 North American Datum of 1983 (NAD 83). Projection and 1000-meter grid: Universal Transverse Mercator, zone 15 10 000-foot ticks: Missouri Coordinate System of 1983 (west zone), 2500-meter ticks: Kansas Coordinate System of 1983 (north zone)
North American Datum of 1927 (NAD 27) is shown by dashed corner ticks. The values of the shift between NAD 83 and NAD 27 for 7.5-minute intersections are obtainable from National Geodetic Survey NADCON software.
Houses of worship, schools, and other labeled buildings verified 1955



ROAD CLASSIFICATION

Primary highway hard surface	Light-duty road, hard or improved surface
Secondary highway hard surface	Unimproved road
Interstate Route	U.S. Route
	State Route

1	2	3
4	5	6
7	8	

KANSAS CITY, MO-KS
1996
NIMA 7062 II SE-SERIES V879

CONTOUR INTERVAL 10 FEET
NATIONAL GEODETIC VERTICAL DATUM OF 1929
TO CONVERT FROM FEET TO METERS, MULTIPLY BY 0.3048
THIS MAP COMPLIES WITH NATIONAL MAP ACCURACY STANDARDS
FOR SALE BY U.S. GEOLOGICAL SURVEY, P.O. BOX 25286, DENVER, COLORADO 80225
DIVISION OF GEOLOGY AND LAND SURVEY
MISSOURI DEPARTMENT OF NATURAL RESOURCES, ROLLA, MISSOURI 65401
AND KANSAS GEOLOGICAL SURVEY, LAWRENCE, KANSAS 66044
A FOLDER DESCRIBING TOPOGRAPHIC MAPS AND SYMBOLS IS AVAILABLE ON REQUEST



STATE OF MISSOURI
DEPARTMENT OF NATURAL RESOURCES

Matt Blunt, Governor • Doyle Childers, Director

www.dnr.mo.gov

April 29, 2008

Ms. Janet Matthews
United States Dept. of the Interior
National Register of Historic Places
1201 "I" Street NW, 6th Floor
Washington, DC 20005

Dear Ms. Matthews:

Please find enclosed the following submission from Missouri for nomination to the National Register of Historic Places:

Inter-State Building
Jackson County, Missouri

Our state review board, the Missouri Advisory Council on Historic Preservation, approved the above nomination on February 8, 2008. All owners and appropriate elected public officials were notified and provided at least thirty (30) days to comment on the above proposed nomination in accordance with Section 36CFR60.6, interim regulations, using the exact notification format recommended by the National Register. No objection letters were received.

The City of Kansas City, as part of its responsibilities as a Certified Local Government, was provided an opportunity to review the proposed nomination prior to its presentation to the state review board. A letter of support from the Landmarks Commission is enclosed.

If you have any questions concerning this submission, please contact Tiffany Patterson of my staff at 573/751-7800, tiffany.patterson@dnr.mo.gov, or at the State Historic Preservation Office, P.O. Box 176, Jefferson City, Missouri 65102.

Sincerely,

STATE HISTORIC PRESERVATION OFFICE



Mark A. Miles, Director and
Deputy State Historic Preservation Officer

Enclosures: as stated

CITY OF FOUNTAINS
HEART OF THE NATIONKANSAS CITY
MISSOURI**City Planning and Development Department****Historic Preservation Office/Landmarks Commission**

26th Floor, City Hall
414 East 12th Street
Kansas City, Missouri 64106-2795
landmarkcommission@kcmo.org

(816) 513-2902
Fax (816) 513-2899

January 30, 2008

Mark Miles
Missouri State Historic Preservation Officer and
Director, Department of Natural Resources
P.O. Box 176
Jefferson City, MO 65102-0176

Re: National Register Nomination for the *Inter-State Building*

Dear Mr. Miles:

As Administrator of the Landmarks Commission of the City of Kansas City, Missouri, a Certified Local Government, I am pleased to inform you that the Commission has reviewed the nomination to the **National Register of Historic Places** for the ***Inter-State Building***, located at 417 East 13th Street/1300 Locust Street in Kansas City, Missouri. In the opinion of the Landmarks Commission, this property is of historical significance, and they recommended its nomination to the National Register.

The nomination was reviewed by the Landmarks Commission at a regularly scheduled hearing on January 25, 2008. Notification of intent was mailed to the property owners on January 16, 2008, and a public notice was printed in the *Daily Record* on January 10, 2008. The Landmarks Commission office received no letters or calls in opposition to the nomination.

At the January 25, 2008 hearing of the nomination, the Landmarks Commission made a motion to **recommend** to the State Advisory Council on Preservation the following:

Mark Miles
January 30, 2008
Re: ***Inter-State Building***
Page Two

The Landmarks Commission finds that the '***Inter-State Building***' located at 417 East 13th Street/1300 Locust Street is eligible under under ***Criterion C*** for its association with early 20th century commercial buildings designed in the Chicago style with a curtain wall construction where the brick veneer is supported on a floor-by-floor basis by a metal structural grid. And given the degree of integrity of location, design, setting, materials, workmanship, character and association, the ***Inter-State Building*** **MERITS** inclusion in the **National Register of Historic Places**.

Sincerely,



Bradley Wolf
Administrator, Landmarks Commission

cc: Cydney E. Milstein & Mary Anne Warfield, Architectural & Historical Research, LLC,
Nomination Preparer