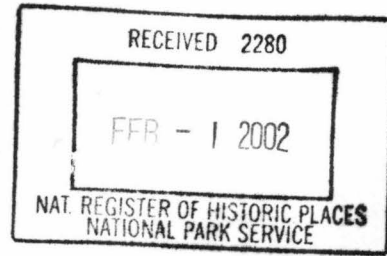


164



**United States Department of the Interior  
National Park Service**

**National Register of Historic Places  
Registration Form**

**1. Name of Property**

historic name N/A

other names/site number Edina Double Square Historic District [preferred](Boundary Increase)

**2. Location**

street & number 118-124 S. Main Street [ n/a ] not for publication

city or town Edina [ n/a ] vicinity

state Missouri code MO county Knox code 103 zip code 63537

**3. State/Federal Agency Certification**

As the designated authority under the National Historic Preservation Act, as amended, I hereby certify that this  nomination  request for determination of eligibility meets the documentation standards for registering properties in the National Register of Historic Places and meets the procedural and professional requirements set forth in 36 CFR Part 60. In my opinion, the property  meets  does not meet the National Register criteria. I recommend that this property be considered significant  nationally  statewide  locally. ( See continuation sheet for additional comments [ ]. )

28 Jun. 02  
Date

Signature of certifying official/Title Claire F. Blackwell/Deputy SHPO

Missouri Department of Natural Resources  
State or Federal agency and bureau

In my opinion, the property  meets  does not meet the National Register criteria.  
( See continuation sheet for additional comments [ ]. )

Signature of certifying official/Title

State or Federal agency and bureau

**4. National Park Service Certification**

I hereby certify that the property is:

entered in the National Register

See continuation sheet [ ].

determined eligible for the National Register

See continuation sheet [ ].

determined not eligible for the National Register.

removed from the National Register

other, explain see continuation sheet [ ].

Signature of the Keeper Date

\_\_\_\_\_  
\_\_\_\_\_  
\_\_\_\_\_

**5. Classification**

Ownership of Property	Category of Property	Number of Resources within Property	
		contributing	noncontributing
<input checked="" type="checkbox"/> private	<input type="checkbox"/> building(s)	2	2 buildings
<input checked="" type="checkbox"/> public-local	<input checked="" type="checkbox"/> district		
<input type="checkbox"/> public-state	<input type="checkbox"/> site	0	0 sites
<input type="checkbox"/> public-Federal	<input type="checkbox"/> structure	0	0 structures
	<input type="checkbox"/> object	0	0 objects
		2	2 total

Name of related multiple property listing.

N/A

Number of contributing resources  
previously listed in the National Register

35

**6. Function or Use**

**Historic Function**

Commerce/Trade/specialty store

Industry/communications facility

Education/library

\_\_\_\_\_

\_\_\_\_\_

\_\_\_\_\_

\_\_\_\_\_

\_\_\_\_\_

**Current Functions**

Commerce/Trade/specialty store

Education/library

Other/storage

\_\_\_\_\_

\_\_\_\_\_

\_\_\_\_\_

\_\_\_\_\_

**7. Description**

**Architectural Classification**

Italianate

Other: Two-part commercial block

\_\_\_\_\_

\_\_\_\_\_

see continuation sheet [ ].

**Materials**

foundation stone

walls brick

roof asphalt

other cast iron

wood

see continuation sheet [ ].

**NARRATIVE DESCRIPTION**

See continuation sheet [x]

United States Department of the Interior  
National Park Service

National Register of Historic Places  
Continuation Sheet

Edina Double Square Historic District [preferred] Boundary Increase  
Knox County, Missouri

Section 7 Page 1

---

**Summary:**

The Edina Double Square Historic District [preferred] (Boundary Increase) consists of four properties located in the west 100 block of South Main Street in Edina, Knox County, Missouri. The district expansion, consisting of buildings located at 118, 120, 122 and 124 South Main Street, extends the boundary southward to Morgan Street. The two-story Knox County Public Library at 120 South Main Street and the two-story Stablein Building<sup>1</sup> at 124 South Main Street are contributing properties within the expansion group. Two one-story commercial properties--one between the Stablein Building and the public library and the other between the library and the southernmost contributing building in the original boundary--are included as noncontributing resources. Constructed in circa 1870, the Stablein Building is the oldest in the expansion group. Next is the Knox County Public Library, constructed in circa 1915. Both noncontributing properties date from 1960. The Stablein Building has been altered (early Sanborn maps indicate that it had a mansard roof) but its present appearance is nonetheless impressive and sufficiently representative of early Edina architecture. In the expanded district, 37 properties are counted as contributing and nine are counted as noncontributing. Despite the addition of the two noncontributing properties, the ratio of contributing to noncontributing resources is still relatively high. With its expanded boundary, the Edina Double Square Historic District is more representative than previously of the community's late 19th and early 20th century commercial architecture.

**Elaboration:**

The summary description of the district architecture as stated in the original nomination is unchanged by the boundary increase: "Architecturally, the properties are generally vernacular commercial buildings, often distinguished by Italianate detailing and which vary primarily in their facade architectural detailing." The Stablein Building enhances the district's Italianate architecture, retaining distinctive pairs of ornate brackets along its wooden cornice. The Knox County Public Library is relatively undistinguished but retains modestly corbeled brickwork and original second floor fenestration. Both contributing buildings were constructed within the district's 1865-1945 period of significance.

Additional information on the added properties, numbered 40-43, is as follows (the properties were numbered 1-39 in the original nomination):

40. Building at 118 S. Main St., (circa 1960) (photos 16 and 17). Counted as **noncontributing**, this one-story building occupies the space between the adjacent Thomas and Ellen McMahan Building (circa 1893) at 116 S. Main St. and the Knox County Public Library building at 120 S. Main St. This building shares common side walls with the older flanking buildings. The aluminum and glass storefront has a central single-leaf entrance flanked by display windows. The area above and below the fenestration is covered with panels of what appear to be corrugated metal. The rear wall is made of cement blocks.

41. Knox County Public Library, 120 S. Main St., (circa 1915) (photos 16, 17, 18). A corbelled cornice with a stone coping forms the primary ornamentation on this two-story brick building. It is counted as a **contributing** building. Corbelled, chimneylike projections rise above the two front corners. Three double-hung windows in openings with flat heads are arranged symmetrically across the second floor facade. The lower storefront has

---

<sup>1</sup>The name of the Stablein Building and that of its original owner, Michael Stablein, is also spelled Stablin in various sources including abstracts for the property. Michael Stablein is apparently the "M. J. Stablein" who is described in the original nomination as a local contractor of the firm Weishar & Stablein. Weishar has been credited with being the principal contractor in rebuilding the Main Street buildings that were destroyed in a fire in 1891.

United States Department of the Interior  
National Park Service

National Register of Historic Places  
Continuation Sheet

Edina Double Square Historic District [preferred] Boundary Increase  
Knox County, Missouri

Section 7 Page 2

been altered and covered with panels of a pebble aggregate. A deeply recessed, single-leaf glass entrance is off-center to the south. Another single-leaf entrance (for the upstairs) is on the north end of the front facade. Each side elevation contains a double-hung window several feet back from the front facade. A one-story brick addition with a pent roof is in the rear.

42. Building at 122 S. Main St., (circa 1960) (photos 16 and 17). This **noncontributing** one-story building fills the space between the Knox County Public Library and the Stablein Building at the end of the block. A single-leaf entrance is centered in the modern glass and metal facade. Flanking it are eight windows (four on each side) which extend almost to the sidewalk. Metal bracing is visible in the parapet where corrugated metal paneling has been removed. This building apparently shares the side wall of the adjacent building on the south but has its own cement block side wall on the north. In the rear, a one-story cement block addition extends southward behind the adjacent building at 124 S. Main St.

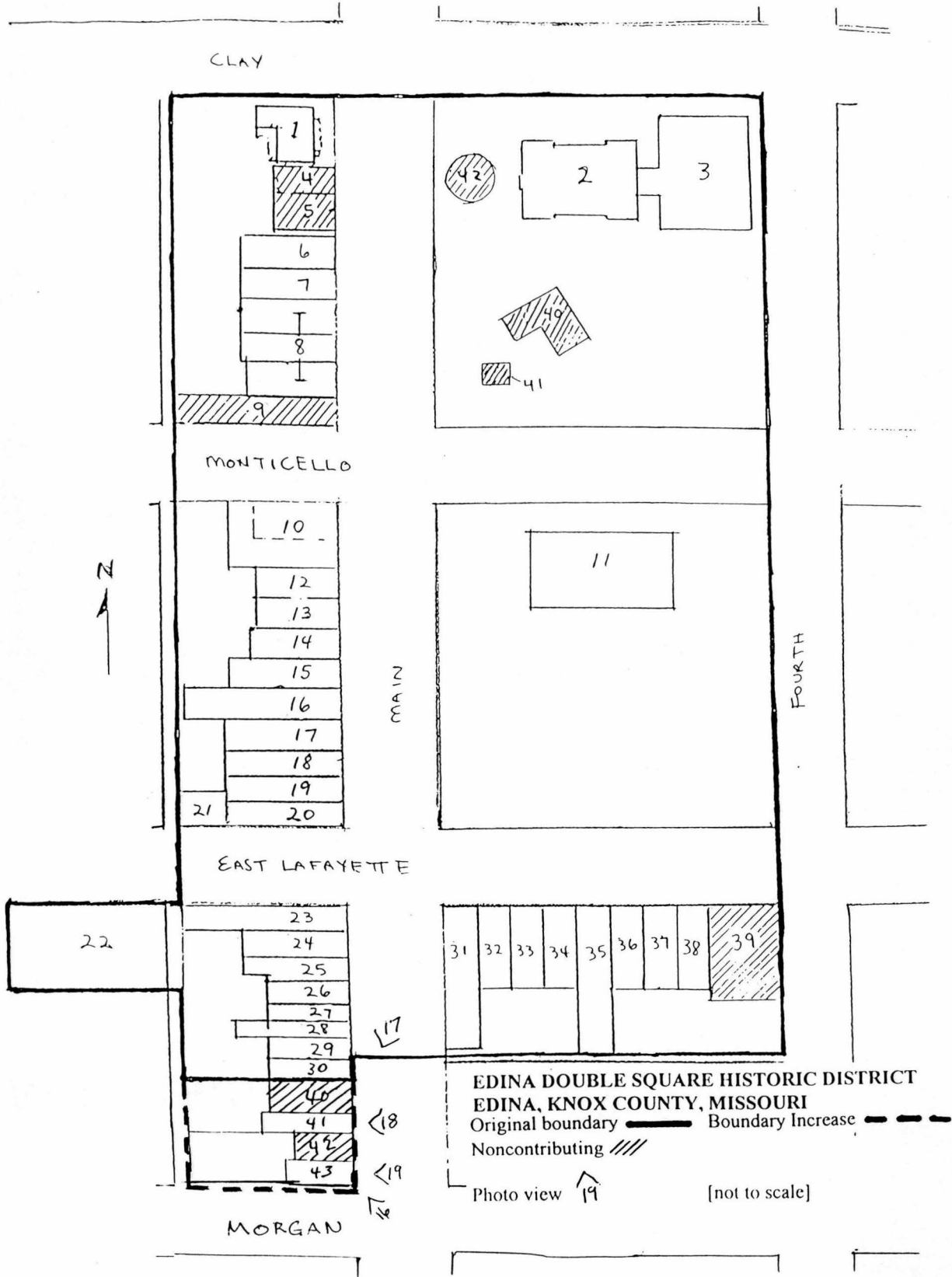
43. Stablein Building, 124 S. Main St., (circa 1870) (photos 16, 17, 19). The Stablein Building is a two-story, three-bay brick building with Italianate affinities and it is counted as **contributing**. A wide wooden cornice with paired scroll brackets and dentils and an intact storefront made of cast iron are among its features. Brickwork quoins accent the front corners. Upstairs windows are 4/4 with single rowlock segmentally arched headers with corbeled tops and pendants. Aluminum awnings are attached. A two-light transom is above the central double-leaf entrance which is flanked by slender fluted columns with acanthus capitals and rounded bases. Large four-light windows with panel aprons flank the entrance. A porch with stairs on the north and south has been removed, exposing a coursed stone foundation. Five windows similar to those in the upper front facade are in the south elevation. Four of these windows are evenly spaced at the second floor level and one is at the rear on the first floor level. Basement walls on the south have square windows with double rowlock headers. Apparently, fenestration in the north elevation was similar to that in the south when the building was constructed in circa 1870. The building was expanded northward with a two-bay addition at some point before 1886 (probably in the late 1870s). Doorways were constructed at both levels in the original north wall at this time and the window openings were infilled with brick, then or later. Between 1886 and 1898, Sanborn maps indicate, a half story with a mansard roof was removed from the present three-bay building, making it two-story like the addition. The wall doorways are intact in the middle of the elevation. In 1960, the addition was removed for construction of the adjacent one-story building at 122 S. Main St. The entrance in the exposed second floor side wall contains an old panel door which is visible from the sidewalk. The north elevation has an entablature and an overhanging roof similar to that on the east and south. However, dentils are missing and only a single pair of scroll brackets is present in this elevation.

United States Department of the Interior  
National Park Service

National Register of Historic Places  
Continuation Sheet

Edina Double Square Historic District [preferred] Boundary Increase  
Knox County, Missouri

Section 7 Page 3



**8. Statement of Significance**

**Applicable National Register Criteria**

**A** Property is associated with events that have made a significant contribution to the broad patterns of our history

**B** Property is associated with the lives of persons significant in our past.

**C** Property embodies the distinctive characteristics of a type, period, or method of construction or represents the work of a master, or possesses high artistic values, or represents a significant and distinguishable entity whose components lack individual distinction.

**D** Property has yielded, or is likely to yield, information important in prehistory or history.

**Criteria Considerations**

Property is:

**A** owned by a religious institution or used for religious purposes.

**B** removed from its original location.

**C** a birthplace or grave.

**D** a cemetery.

**E** a reconstructed building, object, or structure.

**F** a commemorative property.

**G** less than 50 years of age or achieved significance within the past 50 years.

**Areas of Significance**

Commerce

Architecture

**Periods of Significance**

circa 1865-1945

**Significant Dates**

circa 1870

circa 1915

**Significant Person(s)**

N/A

**Cultural Affiliation**

N/A

**Architect/Builder**

Unknown

**Narrative Statement of Significance**

(Explain the significance of the property on one or more continuation sheets.)

**9. Major Bibliographic References**

**Bibliography**

(Cite the books, articles and other sources used in preparing this form on one or more continuation sheets.)

**Previous documentation on file (NPS):**

preliminary determination of individual listing (36 CFR 67) has been requested

previously listed in the National Register

previously determined eligible by the National Register

designated a National Historic Landmark

recorded by Historic American Buildings Survey

# \_\_\_\_\_

recorded by Historic American Engineering Record

# \_\_\_\_\_

**Primary location of additional data:**

State Historic Preservation Office

Other State Agency

Federal Agency

Local Government

University

Other:

Name of repository: \_\_\_\_\_

\_\_\_\_\_

United States Department of the Interior  
National Park Service

National Register of Historic Places  
Continuation Sheet

Edina Double Square Historic District [preferred] Boundary Increase  
Knox County, Missouri

Section 8 Page 4

**Summary:**

The boundary of the Edina Double Square Historic District [preferred] is being increased because additional information permits the inclusion of one of the city's most historic buildings, the circa 1870 Stablein Building at 124 S. Main St., along with another contributing building at 120 S. Main St. Like other contributing properties in the original National Register district, listed in 1999, these two buildings are eligible for listing in the National Register of Historic Places under Criteria A and C in the areas of Commerce and Architecture. The Stablein Building was not included in the original nomination because of integrity concerns. Except for fenestration changes in a side wall, however, the Stablein Building appears to substantially reflect its appearance prior to the construction of a two-bay addition at some point before 1886. In order to include the Stablein Building, a contributing circa 1915 building (the Knox County Public Library) and two noncontributing 1960 buildings are also added to the Edina historic district. Both the Stablein Building at 124 S. Main St. and the public library at 120 S. Main St. are representative of the history of commerce in the community which served as a service center for the agricultural population of Knox and neighboring counties. Additionally, the two contributing properties retain a preponderance of historic materials and detailing and are clearly associated with the city's distinctive assemblage of late 19th and early 20th century commercial architecture. Italianate affinities present in the Stablein Building link it with the district's prevailing architectural style. Also, as a two-story building at the end of its block, the Stablein Building provides a larger anchor for the southernmost end of the district than the previous one-story building in midblock. Both contributing buildings in the boundary increase were constructed within the 1865-1945 period of significance.

**Elaboration:**

While the addition of two noncontributing properties increases the total number of noncontributing properties to nine, the circumstances of some intrusions diminishes their impact. The historic district is arranged around and adjacent to Edina's two public squares, one of which contains the Knox County Courthouse. The second square, in the northeast corner of the district, contains the Edina School and Gymnasium (both contributing properties) as well as three noncontributing structures--a livestock pavilion, a bandstand and a water tower. By being part of the school complex as well as relatively small, these noncontributing properties seem much less intrusive than if they were larger properties more randomly arranged in the district. The two additional noncontributing properties at 118 and 122 S. Main St. have relatively low profiles and are adjacent to larger buildings. The ratio of contributing to noncontributing properties is still relatively strong.

Histories of the individual buildings are as follows:

40. This noncontributing building, located at 118 S. Main St., was constructed in 1960 at about the same time as the noncontributing building at 122 S. Main St. It has been an auto parts business at least since 1975, when it became a branch store of J. Burdman Auto Parts. Today it is known as Big A Auto Parts. The site contained a small one-story frame building in 1886 and 1891. The site was vacant from 1898 through 1925, Sanborn fire insurance maps indicate.

41. In 1916, the contributing building which currently houses the Knox County Public Library at 120 S. Main St. was depicted as a cigar store on that year's Sanborn fire insurance map, and it had a rear porch. The owner probably lived upstairs. Frame one-story buildings used as a restaurant and barber shop or unspecified type of store stood on this lot in 1886 and 1891 but the site was vacant by 1898. It remained vacant in 1906, Sanborn maps indicate. By 1925, when Edina's last Sanborn map was published, this building was a store of an unspecified type and it had been extended rearward. At some point it became a meat locker facility where butchering was carried out as well as storage. Since about 1972, it has housed the Knox County Public Library.

United States Department of the Interior  
National Park Service

National Register of Historic Places  
Continuation Sheet

Edina Double Square Historic District [preferred] Boundary Increase  
Knox County, Missouri

Section 8 Page 5

42. This building, located at 122 S. Main St., was constructed in 1960 as the business office for the Sentinel Printing Company, longtime publisher of the Edina Sentinel. It remained the business office until about 1993. The Sentinel was first published on April 15, 1868, perhaps at a printing office on the southeast corner of 4th and Lafayette Streets. By 1898, the Sentinel was being published next door at 124 S. Main St. In 1886, a one-story frame agricultural implement store was on the north two-thirds of the site and this building remained in 1891, Sanborn maps indicate. By 1898, the site was vacant and was still vacant at least through 1925. A two-bay addition to the Stablein Building (the south third of the lot at 122 S. Main St.) was removed in connection with construction of the present building in 1960.

43. The Stablein Building at 124 S. Main St. was constructed in 1870 by Michael Stablein. Deed records indicate that Stablein purchased the south half of Lot 5 of Block 9, County Addition to Edina, from Nathaniel B. Coulson on February 3, 1870. "Mr. Stablein has put up a neat two story business house and dwelling," said the Edina Sentinel on August 4, 1870. "[Mr. Stablein] has opened to the public in his new store room a fine assortment of Foreign and Domestic Dry Goods consisting in part of calicoes, ladies' wear, broad cloth, fancy cassimeres, plain cassimeres, ready made clothing, hats and caps [and] a full supply of Merchant Tailor Goods [consisting of] clothing made to order, also gentlemen's wear, collars and full line of notions [and] clothing cut to order," he advertised in the Sentinel on November 3, 1870. Edina's earliest Sanborn map, published in 1886, shows a 2½-story building with a mansard roof on the three-bay portion, which is identified as a restaurant, and a 2-story, two-bay addition identified as a jewelry store. In 1891, the larger portion (still with a mansard roof) is depicted as an unspecified type of store and the jewelry store had become a barber shop. Doorways are indicated between the two sections. By 1898, the Edina Sentinel was in the entire building which apparently had a flat roof similar to the present flat roof. By 1925, the gasoline engine used for power in 1916 had been replaced with an electric motor and a rear porch had grown from one to two stories. Historic photos show the building with the two-bay addition but none have been found from the earlier period when it had a mansard roof. However, fenestration in the north elevation (infilled windows similar to those on the south) strongly indicates that today's building is representative of how it originally appeared except for the apparent lack of a mansard roof. The founders of the Sentinel (Taylor, Porter and Stephenson) were no longer associated with the newspaper by the time it was in the Stablein Building. J. C. Claypool was the owner and editor in 1899, followed by W. R. Holloway and then Robert F. Schofield. The Schofield family still owned and operated the paper in 1960, when the two-bay addition was removed and the present one-story building was constructed at 122 S. Main St., as the Sentinel's business office. While the Stablein Building no longer has an attic level with a mansard roof, its intact cast iron lower storefront and the preponderance of historic material throughout make it sufficiently evocative of its appearance at the time of construction to be considered as a contributing building in the Edina Double Square Historic District.

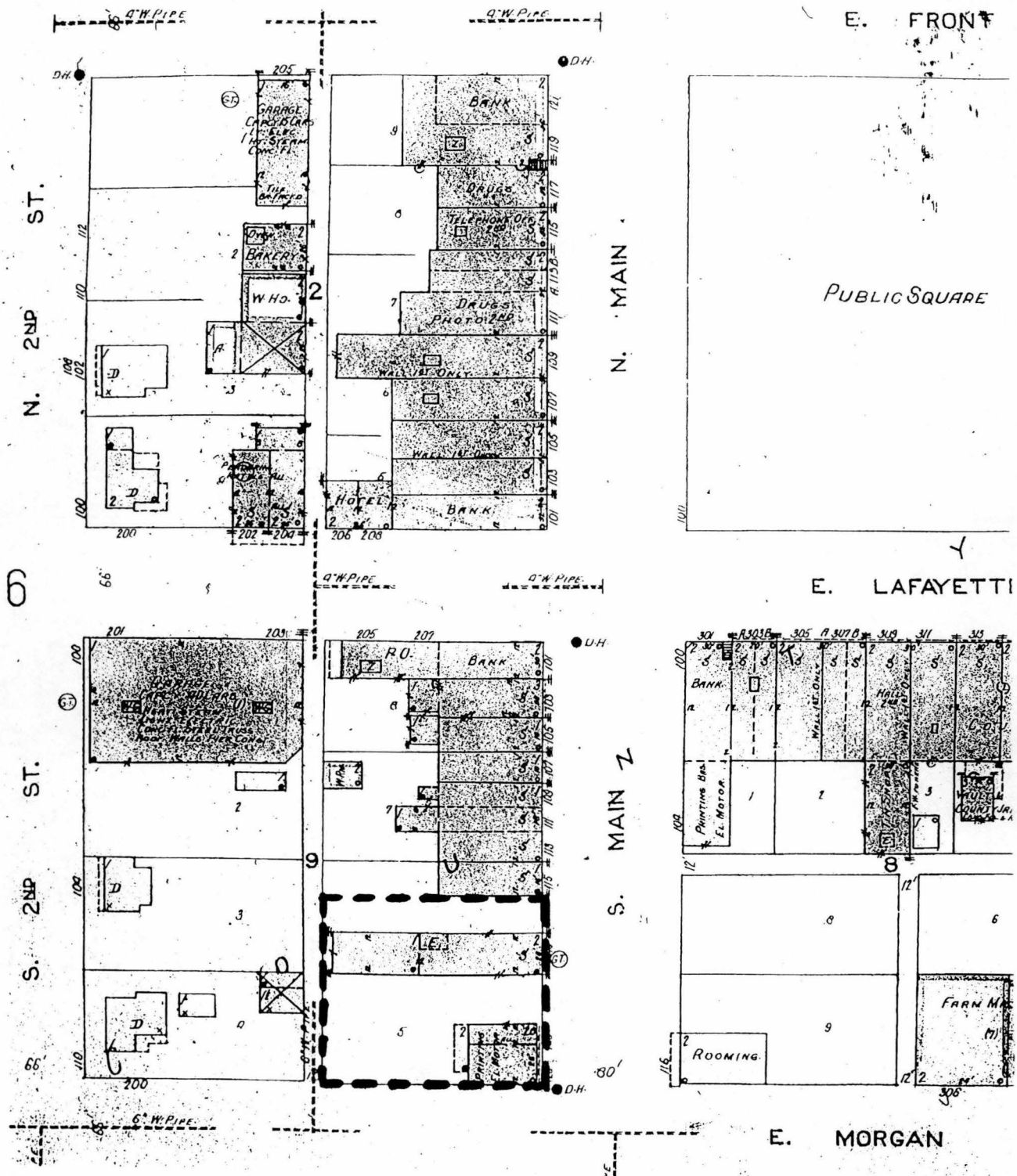


United States Department of the Interior  
National Park Service

National Register of Historic Places  
Continuation Sheet

Edina Double Square Historic District [preferred] Boundary Increase  
Knox County, Missouri

Section 8 Page 7



Source:  
Sanborn Map Company  
Edina, Knox County, January 1925

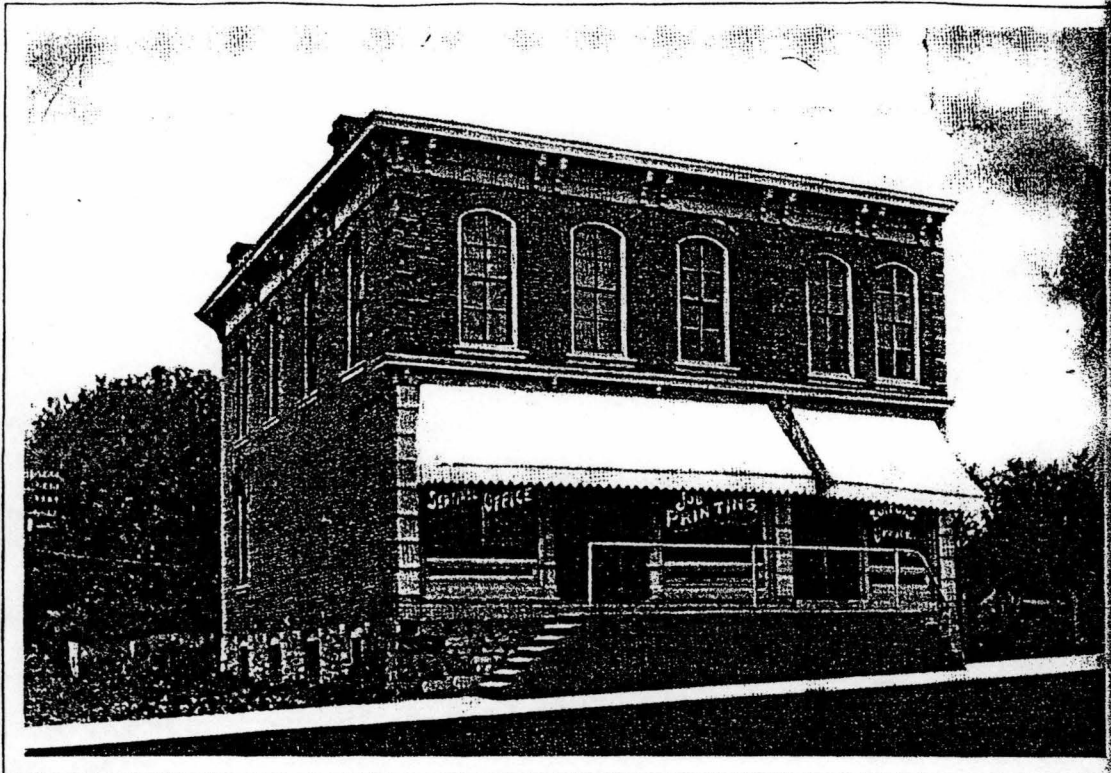
Area of boundary increase — — — — —

United States Department of the Interior  
National Park Service

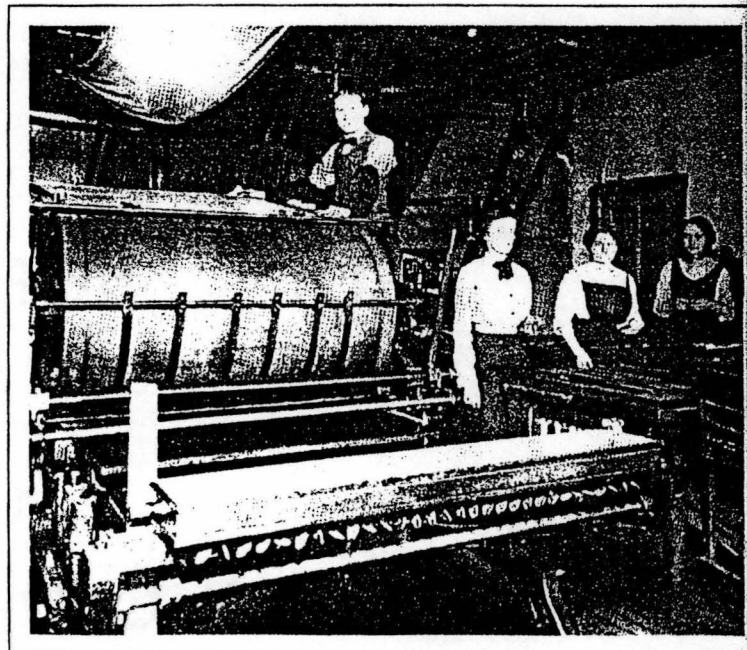
National Register of Historic Places  
Continuation Sheet

Edina Double Square Historic District [preferred] Boundary Increase  
Knox County, Missouri

Section 8 Page 8



Above: *Sentinel* building, erected in the 1870s. Addition on the right was removed to accommodate the new building which was opened in 1960. Right: Inside the *Sentinel* office, 1912.



Source:

Edina, Missouri: A Pictorial History, 1839-1989  
Marceline, Mo.: Walsworth Publishing Company, 1989

**HISTORIC PHOTOS OF STABLEIN BUILDING AS EDINA SENTINEL OFFICE AND PRINTING PLANT**

**10. Geographical Data**

Acreage of Property less than one acre

**UTM References**

A. Zone	Easting	Northing	B. Zone	Easting	Northing
15	570440	4446400			
C. Zone	Easting	Northing	D. Zone	Easting	Northing

[ ] See continuation sheet

**Verbal Boundary Description**

(Describe the boundaries of the property on a continuation sheet.)

**Boundary Justification**

(Explain why the boundaries were selected on a continuation sheet.)

**11. Form Prepared By**

name/title see continuation sheet

organization \_\_\_\_\_ date \_\_\_\_\_

street & number \_\_\_\_\_ telephone \_\_\_\_\_

city or town \_\_\_\_\_ state \_\_\_\_\_ zip code \_\_\_\_\_

**Additional Documentation**

Submit the following items with the completed form:

**Continuation Sheets**

**Maps**

A **USGS map** (7.5 or 15 minute series) indicating the property's location.

A **Sketch map** for historic districts and properties having large acreage or numerous resources.

**Photographs**

Representative **black and white photographs** of the property.

**Additional Items**

(Check with the SHPO or FPO for any additional items)

**Property Owner**

(Complete this item at the request of SHPO or FPO.)

name \_\_\_\_\_

street & number \_\_\_\_\_ telephone \_\_\_\_\_

city or town \_\_\_\_\_ state \_\_\_\_\_ zip code \_\_\_\_\_

United States Department of the Interior  
National Park Service

National Register of Historic Places  
Continuation Sheet

Edina Double Square Historic District [preferred] Boundary Increase  
Knox County, Missouri

Section 9, 10 Page 9

---

**9. Bibliography**

Edina Sentinel Business Files.

Edina Sentinel, August 4, 1870, and November 3, 1870.

Edina Sesquicentennial Committee, Edina, Missouri: A Pictorial History, 1839-1989. Marcelline, MO: Walsworth Publishing Company, 1989.

History of Lewis, Clark, Knox and Scotland Counties, Missouri. St. Louis: Goodspeed Publishing Company, 1887.

Knox County Recorder's Office, Warranty Deeds for South Half of Lot 5, Block 9, County Addition to Edina (in Book Q, Page 25, and Book S, Page 252).

Missouri Historic Inventory Survey Forms No. Ct-F, Ct-G, Ct-H and Ct-15 for J. Burdman Auto Parts, Knox County Library, Edina Sentinel and Edina Sentinel Printing Company, Knox County Survey, October 1984.

Sanborn Map Company, Edina Fire Insurance Maps for 1886, 1891, 1898, 1906, 1916 and 1925.

Standard Atlas of Knox County, Missouri. Chicago: George A. Ogle & Co., 1916.

**10. Verbal Boundary Description**

Beginning at the property line at the northeast corner of 118 South Main Street, proceed south along the west right-of-way of South Main Street to the north right-of-way of Morgan (formerly Bowen) Street; then proceed west along the north right-of-way of Morgan (formerly Bowen) Street to the east right-of-way of the alley that runs north and south between South Main Street and South Second Street; then proceed north along the east right-of-way of the alley to the northwest corner of 118 South Main Street. This connects the boundary extension to the two southernmost corners of the original district.

**Boundary Justification**

The boundary increase has been drawn to include four previously excluded properties in the south portion of the block on the west side of South Main Street between East Lafayette and Morgan Streets. The properties were initially excluded because of integrity concerns regarding the two-story building at 124 S. Main St. After additional research, this building which has long been associated with both commerce and communication in Edina is considered to retain sufficient integrity to be a contributing property within the district. To include this building, a contributing two-story building at 120 S. Main St. and two noncontributing one-story buildings must also be included for the district to be contiguous. The remaining buildings directly east, west and south of the district were excluded because of age or alterations, or because the loss of historic buildings has disrupted the contiguity of the streetscape. Primarily residential buildings are located north of the district.

United States Department of the Interior  
National Park Service

**National Register of Historic Places  
Continuation Sheet**

Edina Double Square Historic District [preferred] Boundary Increase

Section 11, Photographs Page 10

Knox County, Missouri

---

**Form Prepared By**

1. David Davidson  
P.O. Box 42  
Edina, MO 63537  
(660) 397-3986  
April 2001  
Original research
  
2. Roger Maserang  
Historian  
State Historic Preservation Office  
Outreach and Assistance Center  
Department of Natural Resources  
P.O. Box 176  
Jefferson City, MO 65102  
October 11, 2001  
Additional research and writing

**Photographs**

The following information is the same for all photographs:

Edina Double Square Historic District  
Knox County, Missouri  
David Davidson  
June 2001

Negatives in possession of David Davidson, P.O. Box 42, Edina, MO 63537

- #16. Looking northwest from 124 South Main Street.
- #17. Looking southwest from 116 South Main Street.
- #18. Main facade of Knox County Public Library, 120 South Main Street, looking west.
- #19. Main facade of Stablein Building, 124 South Main Street, looking west.

(Photographs #16-19 are numbered as a continuation of those in the original nomination for the Edina Double Square Historic District [preferred])

UNITED STATES DEPARTMENT OF THE INTERIOR  
NATIONAL PARK SERVICE

NATIONAL REGISTER OF HISTORIC PLACES  
EVALUATION/RETURN SHEET

REQUESTED ACTION: NOMINATION

PROPERTY Edina Double Square Historic District  
NAME:

MULTIPLE  
NAME:

STATE & COUNTY: MISSOURI, Knox

DATE RECEIVED: 2/01/02 DATE OF PENDING LIST: 2/13/02  
DATE OF 16TH DAY: 3/01/02 DATE OF 45TH DAY: 3/18/02  
DATE OF WEEKLY LIST:

REFERENCE NUMBER: 02000164

REASONS FOR REVIEW:

APPEAL: N DATA PROBLEM: N LANDSCAPE: N LESS THAN 50 YEARS: N  
OTHER: N PDIL: N PERIOD: N PROGRAM UNAPPROVED: N  
REQUEST: N SAMPLE: N SLR DRAFT: N NATIONAL: N

COMMENT WAIVER: N

ACCEPT  RETURN  REJECT 3/13/02 DATE

ABSTRACT/SUMMARY COMMENTS:

Entered in the  
National Register

RECOM./CRITERIA \_\_\_\_\_

REVIEWER \_\_\_\_\_ DISCIPLINE \_\_\_\_\_

TELEPHONE \_\_\_\_\_ DATE \_\_\_\_\_

DOCUMENTATION see attached comments Y/N see attached SLR Y/N



16

EDINA DOUBLE SQUARE HIST. DIST.  
[PREFERRED] (BOUNDARY INCREASE)

KNOX COUNTY, MO

① View from S.W. looking  
N.W.

Kodak  
PAPER • PAPER • PAPER  
PROFESSIONAL  
PAPER • PAPER

Kodak  
PAPER • PAPER • PAPER  
PROFESSIONAL  
PAPER • PAPER

Kodak  
PAPER • PAPER • PAPER  
PROFESSIONAL  
PAPER • PAPER

Kodak  
PAPER • PAPER



THE  
PRINTING  
OFFICE

THE GREAT  
PUBLIC LIBRARY

BIG  
Auto  
Parts

WELDING

SUPPLIES

17

EDINA DOUBLE SQUARE HIST. DIST.

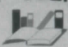
[PREFERRED] (BOUNDARY INCREASE)

KNOX COUNTY, MO.

SW

④

View from NE looking

KNOX COUNTY  
  
PUBLIC LIBRARY  
MEMO LIBRARY SERVICE

Large glass entrance and display windows. The right window features the text "KNOX COUNTY LIBRARY" and "MEMO LIBRARY SERVICE" along with a circular logo containing a stylized 'L' and 'B'. A small white pedestal with the same logo stands to the right of the window.

White door with a small square window and a handle.







SENTINEL  
PRIN

SENTINEL  
PRIN

19

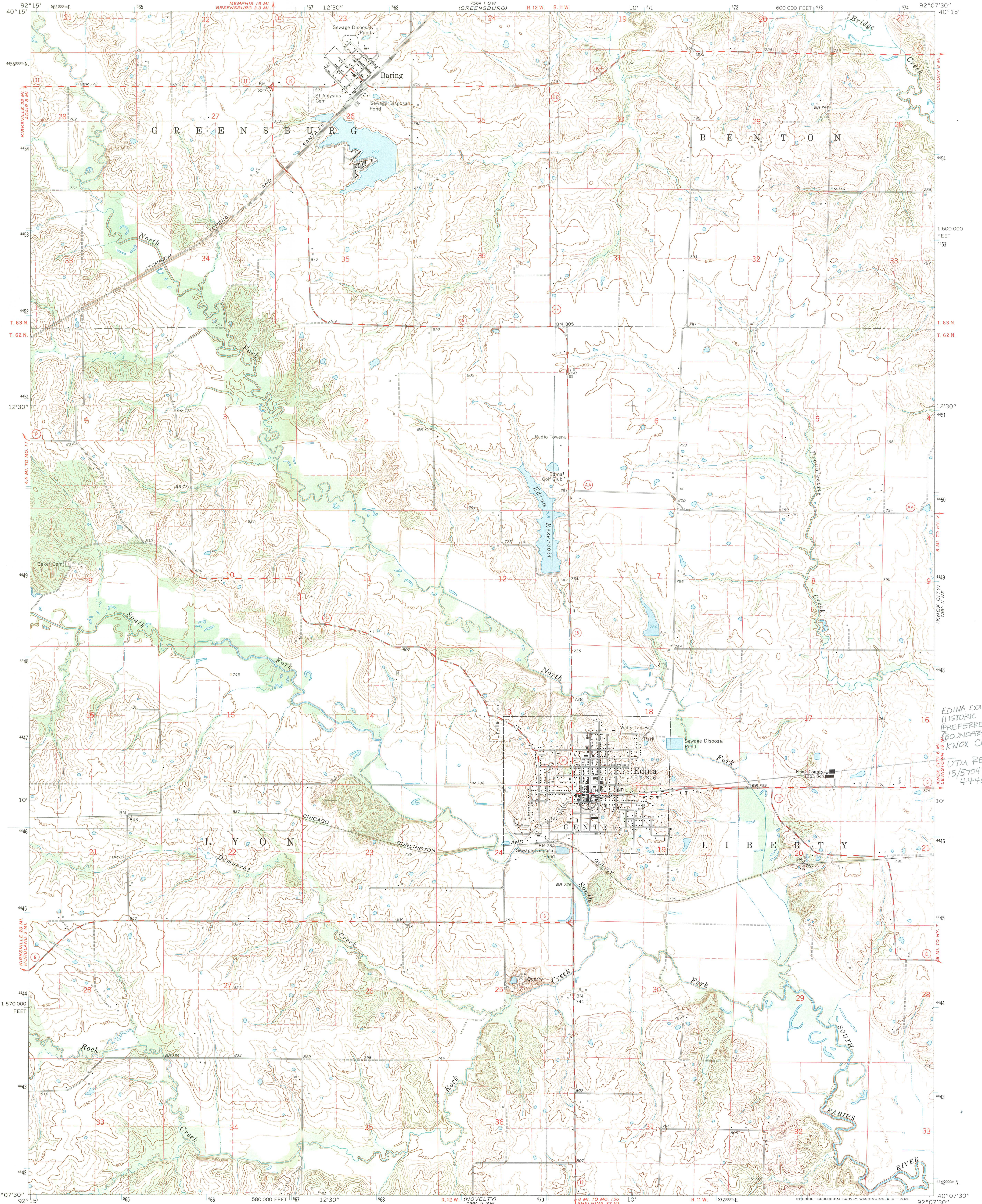
EDINA DOUBLE SQUARE HIST. DIST.

[PREFERRED] (BOUNDARY INCREASE)

KNOX COUNTY, MO

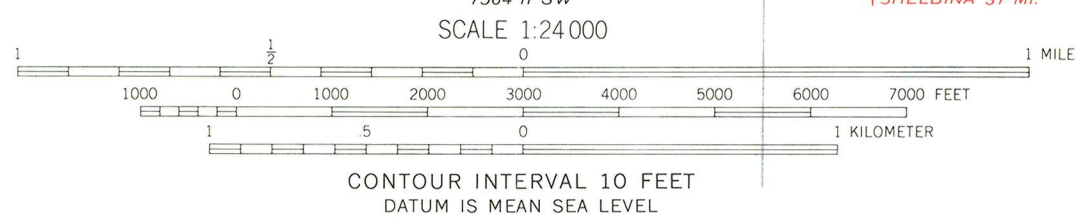
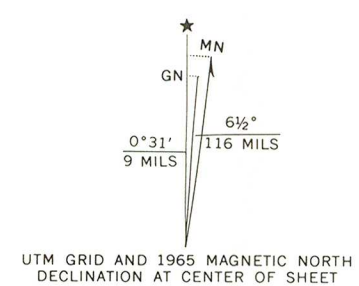
W.

View from E. Looking



EDINA DOUBLE SQUARE  
HISTORIC DISTRICT  
(PREFERRED)  
(BOUNDARY INCREASE)  
KNOX COUNTY, MO  
UTM REFERENCES  
1557040E  
4446400N

Mapped, edited, and published by the Geological Survey  
Control by USGS and USC&GS  
Topography by photogrammetric methods from aerial  
photographs taken 1963. Field checked 1965  
Polyconic projection. 1927 North American datum  
10,000-foot grid based on Missouri coordinate system, central zone  
1000-meter Universal Transverse Mercator grid ticks,  
zone 15, shown in blue  
Fine red dashed lines indicate selected fence and field lines where  
generally visible on aerial photographs. This information is unchecked



ROAD CLASSIFICATION  
Medium-duty — Light-duty  
Unimproved dirt  
State Route

THIS MAP COMPLIES WITH NATIONAL MAP ACCURACY STANDARDS  
FOR SALE BY U. S. GEOLOGICAL SURVEY, DENVER, COLORADO 80225 OR WASHINGTON, D. C. 20242  
AND BY THE MISSOURI GEOLOGICAL SURVEY, ROLLA, MISSOURI  
A FOLDER DESCRIBING TOPOGRAPHIC MAPS AND SYMBOLS IS AVAILABLE ON REQUEST

EDINA, MO.  
N4007.5—W9207.5/7.5

1965  
AMS 7564 II NW—SERIES V879



STATE OF MISSOURI  
DEPARTMENT OF NATURAL RESOURCES

Bob Holden, Governor • Stephen M. Malinowski, Lieutenant Governor



January 25, 2002

Ms. Carol Shull  
United States Department of the Interior  
National Register of Historic Places  
Mail Stop 2280, Suite 400  
1849 C St., NW  
Washington, DC 20240

Dear Ms. Shull:

Please find enclosed the following submission from Missouri for a boundary increase adding four properties to the National Register of Historic Places:

Edina Double Square Historic District [preferred] (Boundary Increase)

Our state review board, the Missouri Advisory Council on Historic Preservation, approved the above nomination on November 9, 2001. All owners and appropriate elected public officials were notified and provided at least thirty (30) days to comment on the above nomination in accordance with Section 36CFR60.6, interim regulations, using the exact notification format recommended by the National Register. No objections, notarized or otherwise, were received for the above referenced action.

If you have any questions concerning this submission, please contact Roger Maserang of my staff at (573) 522-4641.

Sincerely,

STATE HISTORIC PRESERVATION OFFICE

A handwritten signature in black ink, appearing to read "Claire F. Blackwell".

Claire F. Blackwell  
Director and Deputy State Historic  
Preservation Officer

CFB:rm

Enclosure: as stated