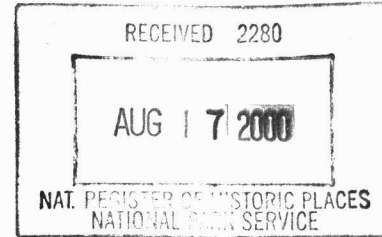


United States Department of the Interior
National Park Service
**National Register of Historic Places
Registration Form**

1109



1. Name of Property

historic name Monje, Paul, House

other names/site number _____

2. Location

street & number 1003 West Fifth Street [N/A] not for publication

city or town Washington [N/A] vicinity

state Missouri code MO county Franklin code 071 zip code 63090

3. State/Federal Agency Certification

As the designated authority under the National Historic Preservation Act, as amended, I hereby certify that this nomination request for determination of eligibility meets the documentation standards for registering properties in the National Register of Historic Places and meets the procedural and professional requirements set forth in 36 CFR Part 60. In my opinion, the property meets does not meet the National Register criteria. I recommend that this property be considered significant nationally statewide locally.
(See continuation sheet for additional comments [].)

Claire F. Blackwell 8 August 2000

Signature of certifying official/Title Claire F. Blackwell/Deputy SHPO Date

Missouri Department of Natural Resources
State or Federal agency and bureau

In my opinion, the property meets does not meet the National Register criteria.
(See continuation sheet for additional comments [].)

Signature of certifying official/Title _____ Date _____

State or Federal agency and bureau _____

4. National Park Service Certification

I hereby certify that the property is:

entered in the National Register.
See continuation sheet [].

determined eligible for the National Register.
See continuation sheet [].

determined not eligible for the National Register.

removed from the National Register.

other, (explain:)
See continuation sheet [].

For
Signature of the Keeper Edson H. Beall Date 9-14-00

Monje, Paul, House
 Franklin County, Missouri
 Historic Resources of Washington, Missouri

5. Classification

Ownership of Property	Category of Property	Number of Resources within Property		
		Contributing	Noncontributing	
<input checked="" type="checkbox"/> private	<input checked="" type="checkbox"/> building(s)	1	0	buildings
<input type="checkbox"/> public-local	<input type="checkbox"/> district	0	0	sites
<input type="checkbox"/> public-State	<input type="checkbox"/> site	0	0	structures
<input type="checkbox"/> public-Federal	<input type="checkbox"/> structure	0	0	objects
	<input type="checkbox"/> object	1	0	Total

Name of related multiple property listing.

Historic Resources of Washington, Missouri

Number of contributing resources previously listed in the National Register.

N/A

6. Function or Use

Historic Functions

Domestic: single dwelling

Current Functions

Domestic: single dwelling

7. Description

Architectural Classification

Other: Gabled Ell

Materials

foundation stone

 walls brick

 roof asphalt
metal
 other _____

See continuation sheet [x].

See continuation sheet [x].

Narrative Description

See continuation sheet [x].

United States Department of the Interior
National Park Service

National Register of Historic Places
Continuation Sheet

Section number 7 Page 1

Monje, Paul, House
Franklin County, Missouri
Historic Resources of Washington, Missouri

7. Description, continued.

Summary:

The Paul Monje House is located at 1003 East Fifth Street in Washington, Franklin County, Missouri. It is a one and one-half story Gabled Ell with a stone foundation, brick walls, and a gable roof. It has segmental arched window and door openings, a brick dentiled cornice and a front porch which extends the width of the side ell. The Monje house is an intact representative example of the Property Type E: Gabled Ell and meets the registration requirements set forth in the Multiple Property Submission cover document "Historic Resources of Washington, Missouri." It was built ca. 1908 and is characteristic of many houses built in the late nineteenth and early twentieth century in Washington. Many of these houses combined a newer house type with traditional Missouri-German features. The house is the only resource on the property, and it is a contributing building. The period of significance ca. 1908 represents the construction date of the house.

The Monje house is intact, particularly on the exterior, and is in excellent condition. The original form and patterns of fenestration are little changed, and the house appears today much as it has throughout its 92 year history. Although the interior has seen some changes, the basic plan is intact, some original doors are still in place, and the original newel post was reused when the staircase was reconstructed. The Monje house is a typical Gabled Ell, and it is a fine example of the blending of a popular late nineteenth and early twentieth century house form with Missouri-German detailing.

Elaboration:

The Paul Monje House is located on the north side of West Fifth Street just west of Hickory Street in a residential neighborhood. It sits approximately twenty feet back from the sidewalk on a deep lot which slopes down away from the street. Nearby houses represent a mix of types and construction dates.

The one and one-half story house, which faces south, is built on a stone foundation and has red brick walls. Characteristic of the Gabled Ell house type, the main elevation of the Monje house has a prominent front facing gable, a side-gabled ell and one-half width front porch. Windows and doors throughout the house are set into segmental arched openings. The windows are modern replacements, but they are similar in size and design to the originals. The front facing gable has a pair of one-over-one windows set into a single segmental arched opening on the first floor and a one-over-one window, which is centered, on the second floor. The porch, which sits in front of the side-gabled ell, has tapered round columns, a simple wooden balustrade, and a hipped roof. The porch shelters the front door and a one-over-one

**United States Department of the Interior
National Park Service**

**National Register of Historic Places
Continuation Sheet**

Section number 7 Page 2

**Monje, Paul, House
Franklin County, Missouri
Historic Resources of Washington, Missouri**

window in the side ell. There is also a window in the side wall of the front facing gable. The front door, which is early or original, is topped with a single light transom. The roof above the porch has two evenly spaced hip-roofed dormers, which are early, but not original. A brick dentiled cornice runs along the eave of the front facing gable and continues across the facade of the side ell.

The east elevation is basically unadorned. There are three one-over-one windows on this elevation; two are evenly-spaced on the first floor, and one is centered in the upper gable end. A pair of integral chimneys are located in the gable end. The west elevation is slightly more detailed than the east elevation. It has a dentiled cornice and four star-shaped wall ties. The two windows on the first floor are symmetrically placed and the window on the second floor is centered in the side-facing gable end. There is one integral chimney in the gable end.

Due to the slope of the lot, the first floor is approximately half a story above grade on the rear elevation. There is a shed-roofed porch on the east side of the rear elevation. It shelters the back door, and a small one-over-one window. The back porch has square wooden posts, a wooden railing, and wooden lattice skirting. It appears to be early, but not original. A one-over-one window is located on the west side of the rear elevation and a dentiled brick cornice runs the length of the rear elevation.

The interior of the Monje house has seen some changes, but the basic plan is intact and many of the original doors and wood floors are in place. The interior trim has been removed during the rehabilitation of the house. However, the owners plan to reinstall as much trim as possible. Like all Gabled Ells, the Monje house has an L-shaped plan. The front door opens on to a central hall containing the stairs to the second floor. The hall also leads to both front rooms and to the back part of the house. The front of the house contains the living room to the west and the dining room to the east. The back of the house has a bedroom on the west, the kitchen on the east, and a bathroom in the middle. The original carved newel post was recycled when the stairs to the second floor were reconstructed. There are three bedrooms and a bath on the second floor.

Overall, the Monje house appears today much as it did when Paul Monje owned it. The basic form and patterns of fenestration are intact, and the house continues to function, as it has since it was constructed, as a single family dwelling.

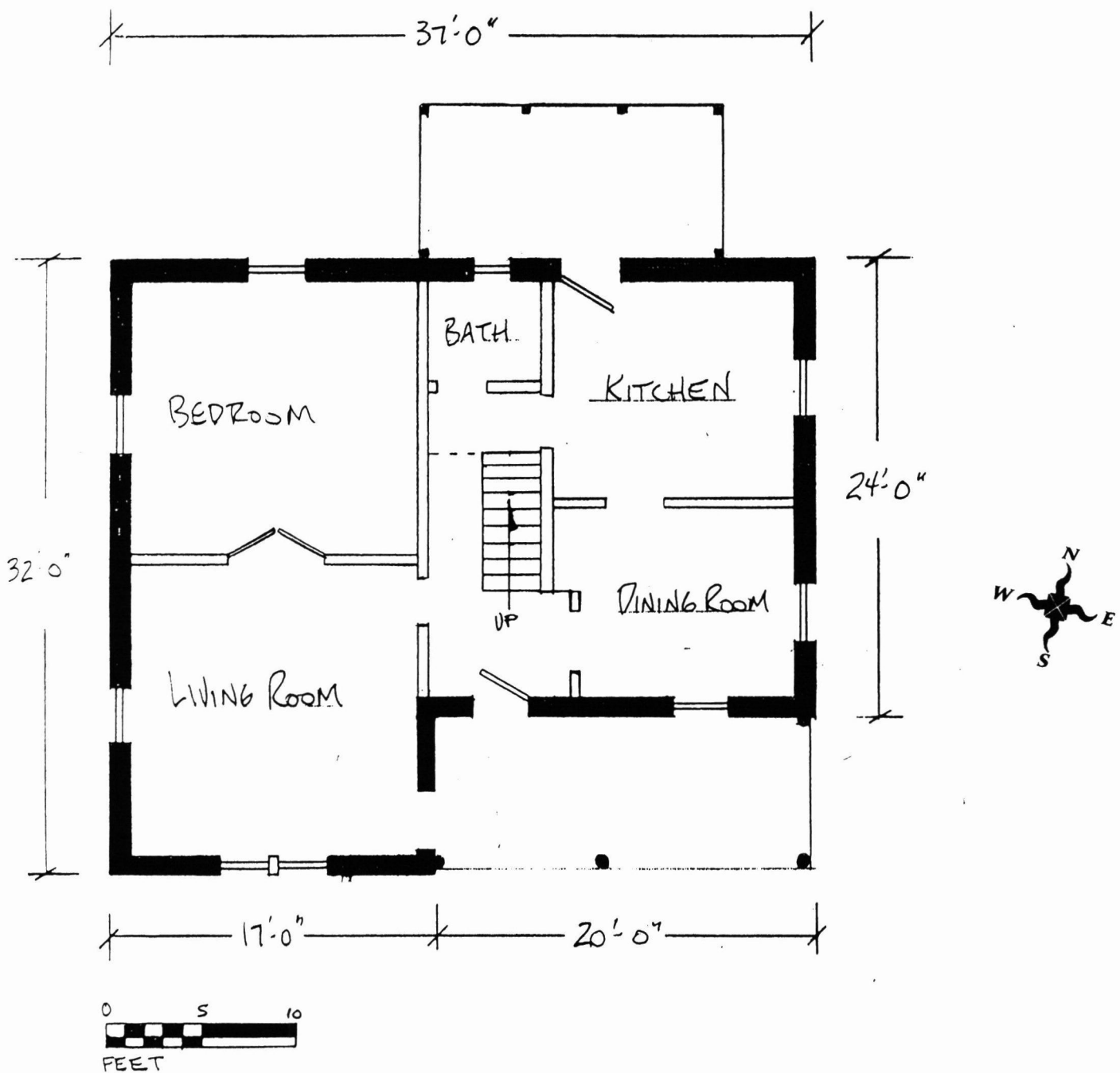
United States Department of the Interior
National Park Service

National Register of Historic Places
Continuation Sheet

Section number 7 Page 3

Monje, Paul, House
Franklin County, Missouri
Historic Resources of Washington, Missouri

Figure One: First Floor Plan.



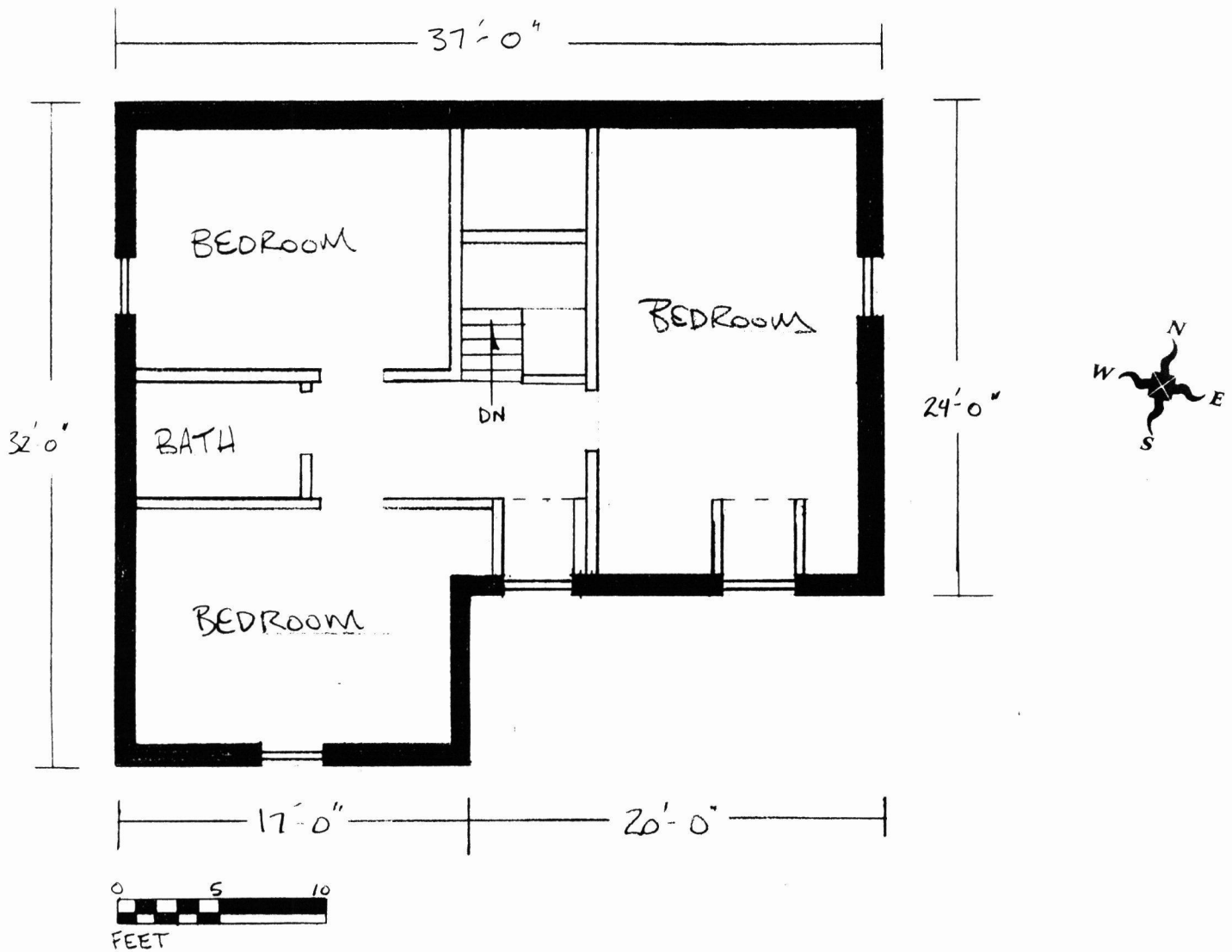
United States Department of the Interior
National Park Service

National Register of Historic Places
Continuation Sheet

Section number 7 Page 4

Monje, Paul, House
Franklin County, Missouri
Historic Resources of Washington, Missouri

Figure Two: Second Floor Plan.



Monje, Paul, House
Franklin County, Missouri
Historic Resources of Washington, Missouri

8. Statement of Significance

Applicable National Register Criteria

- A** Property is associated with events that have made a significant contribution to the broad patterns of our history
- B** Property is associated with the lives of persons significant in our past.
- C** Property embodies the distinctive characteristics of a type, period, or method of construction or represents the work of a master, or possesses high artistic values, or represents a significant and distinguishable entity whose components lack individual distinction.
- D** Property has yielded, or is likely to yield, information important in prehistory or history.

Criteria Considerations

Property is:

- A** owned by a religious institution or used for religious purposes.
- B** removed from its original location.
- C** a birthplace or grave.
- D** a cemetery.
- E** a reconstructed building, object, or structure.
- F** a commemorative property.
- G** less than 50 years of age or achieved significance within the past 50 years.

Narrative Statement of Significance

See continuation sheet [x].

Areas of Significance

Architecture

Period of Significance

ca. 1908

Significant Dates

ca. 1908

Significant Person(s)

N/A

Cultural Affiliation

N/A

Architect/Builder

Unknown

9. Major Bibliographic References

Bibliography

See continuation sheet [x].

Previous documentation on file (NPS):

- preliminary determination of individual listing (36 CFR 67) has been requested
- previously listed in the National Register
- previously determined eligible by the National Register
- designated a National Historic Landmark
- recorded by Historic American Buildings Survey

- recorded by Historic American Engineering Record

Primary location of additional data:

- State Historic Preservation Office
- Other State Agency
- Federal Agency
- Local Government
- University
- Other:
Name of repository:
Washington Historical Society, Washington, MO

United States Department of the Interior
National Park Service

National Register of Historic Places
Continuation Sheet

Section number 8 Page 5

Monje, Paul, House
Franklin County, Missouri
Historic Resources of Washington, Missouri

Summary:

The Paul Monje house, located at 1003 West Fifth Street, is a fine example of Property Type E: Gabled Ell. It meets the registration requirements set forth in the Multiple Property Submission cover document "Historic Resources of Washington, Missouri and falls under the historic context "Architectural Development: 1839-1950." As such, it is significant under Criterion C in the area of ARCHITECTURE. The house is an intact example of Property Type E: Gabled Ell, and meets the registration requirements set forth in the MPS Cover document "Historic Resources of Washington, Missouri." It is typical in plan, massing, materials and detailing of Gabled Ell dwellings in Washington.

The house was built ca. 1908 by or for Paul Monje, a local farmer, and his family. The period of significance ca. 1908 represents the construction date of the house. The Monje house is intact, particularly on the exterior, and retains integrity of location, design, setting, materials, workmanship, feeling and association.

Elaboration:

The Monje house is typical of Gabled Ell property type discussed in the MPS cover document. It has a four room, L-shaped plan, a projecting front facing gable, a side-gabled ell and a one-half width front porch.¹ It is possible that the plan for the house was purchased from an architectural pattern book, as the house is very similar to other Gabled Ell houses in town. In the late nineteenth and early twentieth century, builders in Washington began to construct houses based on nationally popular house types and styles. Undoubtedly, they often purchased plans from architectural pattern books and, many may have ordered porches, trim packages, and whole house kits from mail order companies. However, many builders continued to employ the brick walls, brick dentiled cornices, and segmental arched window and door openings so prevalent on the houses built by their ancestors, features that reflect Washington's vernacular Missouri-German building traditions. The Monje house has these features, but like many early twentieth century houses in town, it also has some Colonial Revival detailing.

¹ See MPS cover document "Historic Resources of Washington, Missouri: Architectural Development, Section F, Associated Property Types," for a full discussion of Gabled Ell characteristics.

United States Department of the Interior
National Park Service

National Register of Historic Places
Continuation Sheet

Section number 8 Page 6

Monje, Paul, House
Franklin County, Missouri
Historic Resources of Washington, Missouri

Paul Monje was born in Germany in 1847 and immigrated to the United States in 1867.² A few years later, he married Sophia Maria Jaeger, also a native of Germany, and they moved to Franklin County, where they owned a farm near Campbellton.³ According to his obituary in the May 21, 1920 issue of the Washington Citizen, Monje retired from farming in 1908 and moved with his family to Washington.⁴ The Monje house appears to have been built that same year and was probably built specifically for the Monje family. The house stayed in the Monje family until Sophia's death in 1923.

Overall, the Monje house is an fine example of the Gabled Ell property type in Washington, a popular turn of the century house form which was often given Victorian or Colonial Revival detailing. It also demonstrates the longevity of Missouri-German building traditions in Washington. It is in excellent condition and has seen few exterior alterations. It appears today much as it did when the Monjes moved in around 1908.

² United States Census Index, 1920 (Microfilm copy at the State Historical Society, Columbia, Missouri)

³ Obituary for Paul N. Monje. Washington Citizen, May 21, 1920. (Kiel Files p. 26539, Washington Historical Society, Washington, Missouri.)

⁴ Ibid.

United States Department of the Interior
National Park Service

National Register of Historic Places
Continuation Sheet

Section number 8 Page 7

Monje, Paul, House
Franklin County, Missouri
Historic Resources of Washington, Missouri

**Chronology: From Land Tax Assessment Books, City Directories, Franklin County Atlases,
and Washington Historical Society Collections.**

1898 Atlas - J. F. Mauntel owns all of the land on the north side of West Fifth Street from High Street west past Hickory Street.

ca. 1908 **House Built.**

1909 Tax Assessment - Paul Monje - Property described as part of the East North Northeast 108'-9" by 425' bounded by Mauntel on the north, by Hickory St on the east, by St. Johns St. on the south and by Horstmann on the west. \$750.

1916 Sanborn - The house first appears on the Sanborn Map for Washington this year. No back porch is shown.

1919 Atlas - Paul Monje.

1920 Paul Monje died.

1922 Directory - Mrs Paul Monje, Geo. Krumsick.

1923 Sophia Monje died.

1926 Sanborn - The house is first show with a back porch this year.

1931 Directory - Fritz Struckhoff, Francis Aholt.

1940 Directory - Mrs Frances Aholt, Fritz Struckhoff.

1950 Directory - Mrs. Emily G. Struckhoff.

United States Department of the Interior
National Park Service

National Register of Historic Places
Continuation Sheet

Section number 9 Page 8

Monje, Paul, House
Franklin County, Missouri
Historic Resources of Washington, Missouri

SOURCES:

Baldwin, Robert Morton. Washington, Missouri Telephone Street Guide and Householder's Directory. Washington, MO: The Mullin-Kline and Miller Press, 1951.

Commercial Telephone Company. 1922 Directory of the Commercial Telephone Company. Observer Print Company, 1922.

Franklin County Deed and Tax Records, Franklin County Courthouse, Union, Missouri.

Hoffman, C. R. C. R. Hoffman's Washington, MO. Street Directory 1940. Washington, MO: C. R. Hoffman, 1940.

Schuyler Drury Publisher. Drury's Washington, Missouri City Directory. St. Louis: Schuyler Drury Publisher, 1931.

United States Census Records. Census Indexes and Population Schedules for Franklin County, 1910-1920. Microfilm on file with the State Historical Society of Missouri, Columbia, MO.

Washington Citizen, May 21, 1920. (Kiel Files, p. 26539, Washington Historical Society, Washington, Missouri.

Washington Historical Society. Kiel Files p. 26537-26544. Washington, MO.

Monje, Paul, House
Franklin County, Missouri
Historic Resources of Washington, Missouri

10. Geographical Data

Acreege of Property approximately 1 acre

UTM References

A. Zone	Easting	Northing	B. Zone	Easting	Northing
15	672060	4269220			
C. Zone	Easting	Northing	D. Zone	Easting	Northing

[] See continuation sheet

Verbal Boundary Description

(Describe the boundaries of the property on a continuation sheet.)

Boundary Justification

(Explain why the boundaries were selected on a continuation sheet.)

11. Form Prepared By

name/title Becky L. Snider, Ph.D.
 organization Private Consultant date March, 2000
 street & number 1008 Sunset Drive telephone 573-256-1105
 city or town Columbia state Missouri zip code 65203

Additional Documentation

Submit the following items with the completed form:

Continuation Sheets

Maps

A **USGS map** (7.5 or 15 minute series) indicating the property's location.

A **Sketch map** for historic districts and properties having large acreage or numerous resources.

Photographs

Representative **black and white photographs** of the property.

Additional Items

(Check with the SHPO or FOP for any additional items)

Property Owner

(Complete this item at the request of SHPO or FOP.)

name Bradley and Jackie Bruns
 street & number 1003 West Fifth Street telephone (636) 390-8291
 city or town Washington state Missouri zip code 63090

United States Department of the Interior
National Park Service

National Register of Historic Places
Continuation Sheet

Section number 10 Page 9

Monje, Paul, House
Franklin County, Missouri
Historic Resources of Washington, Missouri

10. Geographical Data

Verbal Boundary Description: The property is parcel number 10-5-21-0-1-099-135-000 of Franklin County Tax Map 57-10-5-23-1. The map was prepared by Walker and Associates, with aerial photos taken 3-10-96, scale 1"= 100'. Copies of the map are available at Washington City Hall and the Franklin County Assessor's Office in Union, MO. The boundaries of the property are shown in heavy lines on the copy of the relevant portion of the map which is reproduced below.

Boundary Justification: The boundaries encompass all of the land currently and historically associated with the property.



**United States Department of the Interior
National Park Service**

**National Register of Historic Places
Continuation Sheet**

Section number Photographs Page 10

**Monje, Paul, House
Franklin County, Missouri
Historic Resources of Washington, Missouri**

Photographs

The following information is the same for all photographs:

Monje, Paul, House
Washington, Franklin County, Missouri
Becky Snider
December, 1999
Negatives on file with the State Historic Preservation Office
101 East High Street
P. O. Box 176
Jefferson City, MO 65102

List of Photographs

Camera Angles are indicated on the Photo Key Map

1. Front (south) elevation, facing north.
2. South and west elevations, facing northeast.
3. North and east elevations, facing southwest.
4. East and north elevations, facing southeast.
5. South and east elevations, facing northwest.
6. Cornice Detail.
7. Living Room.
8. Kitchen.
9. Newel Post.

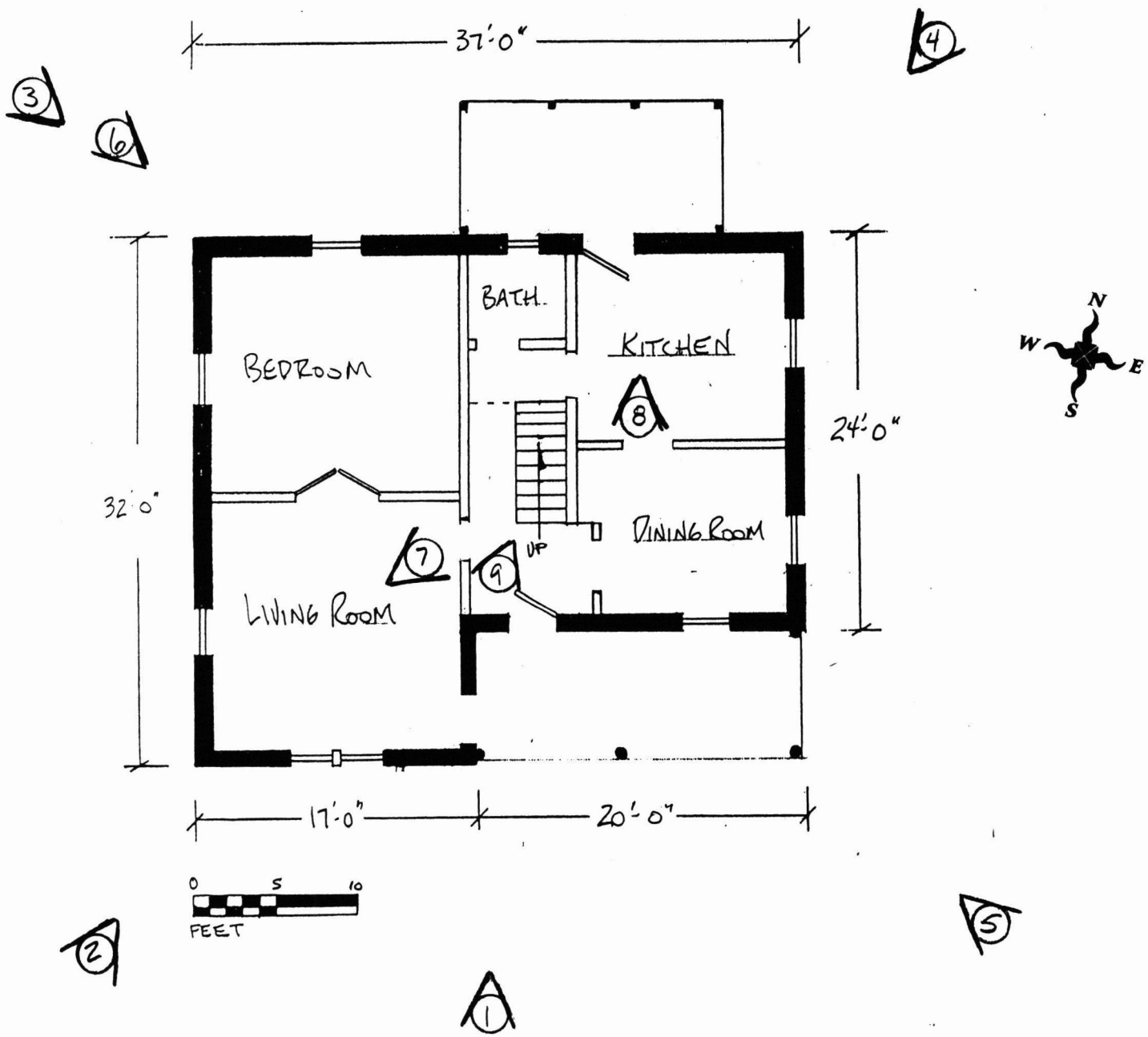
United States Department of the Interior
National Park Service

National Register of Historic Places
Continuation Sheet

Section number 11 Page 11

Monje, Paul, House
Franklin County, Missouri
Historic Resources of Washington, Missouri

Figure Three. Photo Key Map - First Floor Plan. Drawn by Becky Snider .



UNITED STATES DEPARTMENT OF THE INTERIOR
NATIONAL PARK SERVICE

NATIONAL REGISTER OF HISTORIC PLACES
EVALUATION/RETURN SHEET

REQUESTED ACTION: NOMINATION

PROPERTY NAME: Monje, Paul, House

MULTIPLE NAME: Washington, Missouri MPS

STATE & COUNTY: MISSOURI, Franklin

DATE RECEIVED: 8/17/00 DATE OF PENDING LIST: 8/29/00
DATE OF 16TH DAY: 9/14/00 DATE OF 45TH DAY: 10/01/00
DATE OF WEEKLY LIST:

REFERENCE NUMBER: 00001109

REASONS FOR REVIEW:

APPEAL: N DATA PROBLEM: N LANDSCAPE: N LESS THAN 50 YEARS: N
OTHER: N PDIL: N PERIOD: N PROGRAM UNAPPROVED: N
REQUEST: N SAMPLE: N SLR DRAFT: N NATIONAL: N

COMMENT WAIVER: N

ACCEPT RETURN REJECT 9.14.00 DATE

ABSTRACT/SUMMARY COMMENTS:

**Entered in the
National Register**

RECOM./CRITERIA _____

REVIEWER _____ DISCIPLINE _____

TELEPHONE _____ DATE _____

DOCUMENTATION see attached comments Y/N see attached SLR Y/N



Monje, Paul, House

Washington, Franklin County, Missouri

Photo #1



Mom's, Paul House
Washington, Franklin County, Missouri
Photo #2



Monje, Paul, House

Washington, Franklin County, Missouri

Photo # 3



Mauje, Paul, House

Washington, Franklin County, Missouri

Photo # 4



Mowje, PAUL, House

Washington, Franklin County, Missouri

Photo # 5



MONJE, PAUL, HOUSE

WASHINGTON, FRANKLIN COUNTY, MISSOURI

PHOTO # 6



Monje, Paul, House

Washington, Franklin County, Missouri

Photo # 7



Mowje, Paul, House

Washington, Franklin County, Missouri

Photo # 8



Monje, Paul, House

Washington, Franklin County, Missouri

Photo # 9

Please refer to the map in the
Multiple Property Cover Sheet
for this property

Multiple Property Cover Sheet Reference Number: 64500319