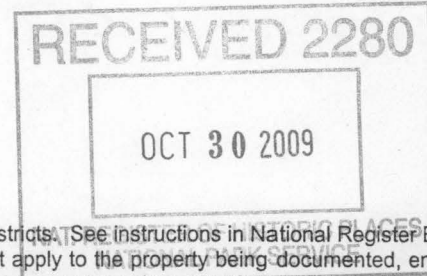


United States Department of the Interior
National Park Service

1069



National Register of Historic Places Registration Form

This form is for use in nominating or requesting determinations for individual properties and districts. See instructions in National Register Bulletin, *How to Complete the National Register of Historic Places Registration Form*. If any item does not apply to the property being documented, enter "N/A" for "not applicable." For functions, architectural classification, materials, and areas of significance, enter only categories and subcategories from the instructions. Place additional certification comments, entries, and narrative items on continuation sheets if needed (NPS Form 10-900a).

1. Name of Property

historic name Michigan Bell and Western Electric Warehouse
other names/site number N/A

2. Location

street & number 882 Oakman Blvd. (aka 14300 Woodrow Wilson) not for publication
city or town Detroit vicinity
state Michigan code MI county Wayne code 163 zip code 48238

3. State/Federal Agency Certification

As the designated authority under the National Historic Preservation Act, as amended,
I hereby certify that this nomination request for determination of eligibility meets the documentation standards for registering properties in the National Register of Historic Places and meets the procedural and professional requirements set forth in 36 CFR Part 60.
In my opinion, the property meets does not meet the National Register Criteria. I recommend that this property be considered significant at the following level(s) of significance:
 national statewide local
Signature of certifying official [Signature] Date 10/23/09
MI SHPO Title State or Federal agency/bureau or Tribal Government

In my opinion, the property meets does not meet the National Register criteria.
Signature of commenting official _____ Date _____
Title _____ State or Federal agency/bureau or Tribal Government _____

4. National Park Service Certification

I, hereby, certify that this property is:
 entered in the National Register determined eligible for the National Register
 determined not eligible for the National Register removed from the National Register
 other (explain:)
Signature of the Keeper [Signature] Date of Action 12-8-09

5. Classification

Ownership of Property
(Check as many boxes as apply)

- private
- public - Local
- public - State
- public - Federal

Category of Property
(Check only one box)

- building(s)
- district
- site
- structure
- object

Number of Resources within Property
(Do not include previously listed resources in the count.)

Contributing	Noncontributing	
1	0	buildings
		district
		site
		structure
		object
1	0	Total

Name of related multiple property listing
(Enter "N/A" if property is not part of a multiple property listing)

N/A

Number of contributing resources previously listed in the National Register

0

6. Function or Use

Historic Functions
(Enter categories from instructions)

INDUSTRY/PROCESSING/EXTRACTION

communications facility

Current Functions
(Enter categories from instructions)

COMMERCE/TRADE

warehouse

7. Description

Architectural Classification
(Enter categories from instructions)

Art Deco

Materials
(Enter categories from instructions)

foundation: Brick

walls: Brick

Limestone

roof: Asphalt

other: Terra Cotta

Narrative Description

(Describe the historic and current physical appearance of the property. Explain contributing and noncontributing resources if necessary. Begin with a **summary paragraph** that briefly describes the general characteristics of the property, such as its location, setting, size, and significant features.)

Summary Paragraph

The twelve-story, Art Deco former Michigan Bell and Western Electric Warehouse is faced with varied, buff-colored brick with limestone trim and buff colored terra cotta accent panels. It is located on the northeast corner of Oakman Boulevard and Woodrow Wilson Avenue in northwest Detroit, less than one block west of the Highland Park border and approximately six miles northwest of downtown Detroit. The building faces south. The neighborhood was developed in the 1920s, with some houses, but then became industrial with manufacturing facilities constructed along Oakman Boulevard between Hamilton and Linwood Avenues. Many of the factories and houses previously in the area have been demolished, leaving large areas of vacant land in the surrounding area. The depressed Lodge Freeway was constructed just to the west of the building in the 1950s, giving dramatic views of the building to northbound drivers. The site is flat with an abandoned railroad right-of-way running along the north boundary of the site.

Narrative Description

The building is comprised of a number of rectangular masses that create an irregular footprint. The front portion of the building, which runs parallel to Oakman Boulevard, is six-stories tall, three-bays deep, and has five identical bays on either side flanking a central, three-bay by three-bay, twelve-story tall tower. Each bay in the lower wings is outlined by brick piers and contains a group of three double-hung steel windows that are four-over-four in configuration and have limestone sills.

The central entrance has a two-and-a-half-story angular arched opening, the surrounding portal is faced in limestone and there is an Art Deco style angular relief, perhaps representing a spool of cable, as a keystone. The inset double-doors, sidelights, and transom have been replaced with glass and aluminum ones but are in the original configuration. Decorative panels, made of asbestos, span the area between the top of the door and the second floor windows. The panels have insets in angular arch and polygonal shapes. Similar panels are located between the floors in the center bay for the full height of the tower. The top of the center window bay has an angular arch. The tops of the tower walls have decorative terra cotta between and on tops of the piers. The terra cotta displays chevron relief patterns throughout the building.

A five-story tall, six-bay wide by seven-bay deep wing extends perpendicularly northward from the east end of the front section of the building. Each bay contains multi-paned, steel industrial-type windows, and the bays are separated by brick piers. A tall brick chimney rises along the northern bay on the east elevation and a square tower projects one story above the roof in the center of the rear elevation. The tower is capped with terra cotta. A long monitor roof is located in the center of the flat roof.

Running along the east side of the building is a two-story warehouse with a monitor in the center of the flat roof. The building mass is stepped back about a half-bay from the front wall of the building and it is five bays wide by ten bays deep. The front (south) elevation has multi-paned, steel industrial type windows at the first floor which have been painted out. At the second floor, each bay on the

south and east elevations has a large multi-paned steel window. The parapet wall has a terra cotta face with chevron relief.

Extending from the west end of the front portion is a two-story garage that is six bays wide and ten bays deep with multi-paned, steel industrial type windows in each bay at the first and second floors. Some first floor bays have overhead garage doors. There are two monitors equally spaced that run the length of the flat roof. The parapet wall has a terra cotta face with chevron relief.

At the north side of the building is a one-story garage that is seven bays wide and two bays deep that runs from the northeast corner of the five-story warehouse to the east end of the two-story garage. It contains multi-paned steel sashes in each bay on the north elevation and two overhead garage doors on the west elevation.

The interior of the building was originally industrial in nature with few finished spaces. The entrance vestibule has a marble stairway with marble faced walls and a vaulted ceiling, as does the first floor corridor containing the elevators and central stairway. The garage and warehouse spaces are large open volumes with concrete floors, exposed trusses, and block walls. Throughout the building areas that formerly contained open warehouse spaces have been subdivided into office areas of various sizes, although some areas were left open with large concrete columns with mushroom capitals spaced throughout the rooms. In some office areas the columns are part of the dividing walls. Painted brick and concrete block walls are common throughout the building. Most of the ceilings are suspended acoustical tile with concrete above. The concrete floors have been covered with carpet or vinyl tile. The third floor kitchen has glazed block walls and tile floors, as do some of the restrooms in the building. The eleventh and twelfth floors are one open space containing two large water tanks. It is an unfinished space with concrete floors and ceilings and painted brick walls.

8. Statement of Significance

Applicable National Register Criteria

(Mark "x" in one or more boxes for the criteria qualifying the property for National Register listing)

- A Property is associated with events that have made a significant contribution to the broad patterns of our history.
- B Property is associated with the lives of persons significant in our past.
- C Property embodies the distinctive characteristics of a type, period, or method of construction or represents the work of a master, or possesses high artistic values, or represents a significant and distinguishable entity whose components lack individual distinction.
- D Property has yielded, or is likely to yield, information important in prehistory or history.

Criteria Considerations

(Mark "x" in all the boxes that apply)

Property is:

- A owned by a religious institution or used for religious purposes.
- B removed from its original location.
- C a birthplace or grave.
- D a cemetery.
- E a reconstructed building, object, or structure.
- F a commemorative property.
- G less than 50 years old or achieving significance within the past 50 years.

Areas of Significance

(Enter categories from instructions)

- Architecture _____
- Communications _____
- _____
- _____
- _____

Period of Significance

1929-1958

Significant Dates

1929-30

Significant Person

(Complete only if Criterion B is marked above)

N/A _____

Cultural Affiliation

N/A _____

Architect/Builder

Smith, Hinchman & Grylls
Bryant & Detwiler, builders

Period of Significance (justification)

The period of significance is from the time of the building's completion in 1930 until 1958 when the operations moved to Plymouth.

Criteria Consideratons (explanation, if necessary)

N/A

Statement of Significance Summary Paragraph (provide a summary paragraph that includes level of significance and applicable criteria)

The former Michigan Bell and Western Electric Warehouse is significant under national register criterion A for its role in the distribution of telephone and communication supplies and re-manufacturing of telephone equipment in Michigan. The period of significance is from the time of the building's construction beginning in 1929 until 1958 when the operations moved to Plymouth. It is significant under criterion C for its Art Deco architecture and design by noted Detroit architects Smith, Hinchman and Grylls.

Narrative Statement of Significance (provide at least one paragraph for each area of significance)

The telephone arrived in Michigan in July 1877, sixteen months after the successful demonstration in Massachusetts by Alexander Graham Bell. It was first demonstrated in Detroit, and then in Grand Rapids eight days later. Bell licensed the Telephone and Telegraph Construction Company in Detroit, and the first Detroit switchboard went into operation in 1878. It was connected to fifty-three lines. The second Michigan switchboard was in Grand Rapids, installed in 1879. In 1880 Detroit was connected by phone to Windsor, Ontario, and in 1881 the Michigan Bell Telephone Company was formed to connect Detroit to other Michigan cities. The first line was run to Port Huron through Mount Clemens, Richmond, and St. Clair. By 1885 Detroit was connected to Ypsilanti, Ann Arbor, Toledo, Jackson, Coldwater, Hillsdale, Flint, Lansing and Saginaw. In 1904 the Telephone and Telegraph Construction Company and the Michigan Bell Telephone Company combined to become the Michigan State Telephone Company which became the Michigan Bell Telephone Company in 1924 as a result of Michigan State Telephone combining with the state's other large provider, Citizens Telephone Company. It was related to the nationwide system of Bell Telephone Companies and the American Telephone and Telegraph Company.

The following years brought great expansion of the telephone infrastructure and the Michigan Bell Telephone Company in Michigan. Airplane to ground communications began in 1929 and 1931 brought teletypewriter service, and by 1940 there were 820,000 phones in Michigan handling four million calls a day. In 1942 the first ship to shore telephones arrived on the Great Lakes, and 1946 brought mobile telephones in cars and trains. In 1950 there were two million telephones in Michigan, and in 1953 Birmingham was the second city in the country to have Direct Distance Dialing. By 1961 there were three million telephones, and touch tone calling arrived in 1964.ⁱ

After Bell's patent expired on the telephone in 1894, a number of independent telephone companies were formed in Michigan. The earliest was the Escanaba Telephone Company which formed in 1894. In 1895 the Citizens Telephone Company started in Grand Rapids and also served Kalamazoo, Lansing, and Jackson until 1923 when it was purchased by the Michigan State Telephone Company. Some Michigan communities had more than one telephone company, which created duplication: people had to subscribe to every company that had customers that they wanted to connect to. The "duplicate service" ended in 1950 when Michigan Bell was consolidated with the Jonesville Cooperative Telephone Company; however as late as 1965 there were still seventy telephone companies in Michigan.

At the national level the Western Electric Manufacturing Company was formed in 1872 and by 1878 had transitioned into making telephone equipment for Bell. In 1882 Western Electric signed a contract to become Bell's exclusive manufacturer of telephones in the United States. It was

ⁱ *History of the Telephone in Michigan*. Michigan Bell, 1965.

considered by Bell as an independent company until the early 1900s, but by 1914 Western Electric was described as the manufacturing department of the Bell System.ⁱⁱ In 1925 Bell's reorganization at the national level established the "...institutional responsibilities: Bell Laboratories designed the network; Western Electric manufactured the telephones, cable, transmission equipment, and switching equipment; the operating companies [such as Michigan Bell] installed the phones, operated the local networks, and billed the customers; and AT&T long lines operated the long-distance network."ⁱⁱⁱ This arrangement was no different in Michigan; Western Electric was Bell's exclusive supplier of every item used in the telephone business, including cable, switchboards, telephones, and even office supplies.

The former Michigan Bell and Western Electric Warehouse located at the northeast corner of Oakman Boulevard and Woodrow Wilson in northwest Detroit was constructed in 1929-30 as warehouse, garage and office space for both companies. The majority of the building was leased by Western Electric for use as their Michigan headquarters. All of the supplies and equipment needed around the state by Michigan Bell were routed through this facility. Western Electric had 350 employees in Detroit in 1930. In times of emergency, equipment was also sent to other Bell Companies across the United States.

In order to accommodate the growing demands of Michigan Bell, which had a rapidly increasing customer base throughout Michigan, both companies needed additional space - Michigan Bell to house and service motor vehicles, Western Electric to receive, store, and distribute equipment for all of Michigan. When the Oakman Boulevard building opened in 1930 it replaced a much smaller building used by both companies at Kirby and Dequindre on the east side of Detroit. The new location was on a railroad spur that was connected to the Detroit Terminal Railroad, a line constructed to serve outlying sites available for industrial expansion. Other industries were constructing buildings along this section of the railroad line. The site was likely chosen because of the availability of a large parcel with railroad access in order to receive the large spools of wire and many other needed supplies.

Described as "One of the largest and most complete plants of its kind in the Bell System," in the October, 1930 issue of *The Michigan Bell*, the brick, steel, and concrete building was designed by Smith, Hinchman, and Grylls, a noted and prolific Detroit architecture firm that designed numerous downtown Detroit skyscrapers such as the Guardian, Buhl, and Penobscot buildings, as well as the Michigan Bell headquarters located on Cass Avenue. The building originally housed five service units between the two companies. For Michigan Bell the west side of the first floor was a garage large enough to store and load 100 vehicles and had offices related to the motor fleet. A separate vehicle service building was located at the rear of the lot but was demolished about 1959. For Western Electric the north and east sides of the building housed an enclosed rail spur for unloading up to four freight cars at a time and warehouse space for heavy and large materials. The second through sixth floors of the warehouse wing on the north and east side of the building were devoted to Western Electric's offices and operations. A storeroom containing supplies of over 8,000 items was located on the second floor. The fifth floor was where used equipment and supplies were returned for repair and refurbishment, or for salvage. A fireproof chute serving all floors moved waste materials to large incinerators in the basement.

ⁱⁱ Stephen B. Adams and Orville Butler, *Manufacturing the Future: A History of Western Electric* (Cambridge, UK: Cambridge University Press, 1999), 3.

ⁱⁱⁱ *Ibid*, 7.

Michigan Bell had building and maintenance shops on the third floor and offices on the sixth floor. Other floors of the building were shared by both companies, the southwest side of the third floor had a cafeteria for employees, and the tower contained a conference room and lounges on the seventh floor. The tenth floor was devoted to telephone equipment for the building.

The building continued in this use for twenty-eight years; during World War II Western Electric contributed large amounts of scrap to the war effort that had been previously recycled into new products for the company. Continued suburban growth after the war necessitated new headquarters for Western Electric and they moved to a new, larger facility in Plymouth in 1958. Michigan Bell remodeled the building and converted the warehousing and manufacturing spaces into offices for the newly created marketing department. This department combined the functions of the sales, directory and telephone planning groups. One of the initial tasks of this group was to consolidate the twenty-seven metropolitan Detroit directories into three white pages books and six Yellow Pages books, a process which took two years and was completed in 1960. In 1961 a large sign was installed on the front of the building, covering the top of the front elevation and blocking the windows on the top two floors that contained two large water tanks. The sign advertised the Yellow Pages and it is reported that the neon outlining the telephone changed colors depending on weather conditions. The building is located near the intersection of the Lodge and Davison Freeways, which were completed in the early 1950s. The new freeways provided new views of the building by northbound Lodge Freeway drivers that were not originally present when the building was constructed. This visibility probably encouraged the installation of the sign in 1961. The sign is proposed to be removed as part of the pending rehabilitation project. Michigan Bell sold the building in 1995, although a small group of their employees worked from the building until approximately 1999.

Smith, Hinchman, and Grylls

Smith, Hinchman, and Grylls had its origins in 1855 when Sheldon Smith (1818-1869) came to Detroit and started an architectural firm. His work included a number of residences, and the 1869 Detroit Opera House. In 1857 his son Mortimer Smith (1840-1896) joined the firm, and Sheldon Smith and Son, Architects, designed the David Whitney house on Woodward Avenue, as well as the Michigan State School for Dependent Children in Coldwater. Mortimer Smith helped to form Michigan's first architectural society along with architects Donaldson and Meier, among others. About 1883, after studying in Omaha with architect Louis Mendelsohn, Mortimer's son, Fred L. Smith (1862-1941), became a partner in the firm, which was renamed Mortimer Smith and Son, Architects. A few of the notable projects designed by the firm included the 1891 J.L. Hudson Department Store in downtown Detroit, along with the Woodward Avenue Baptist Church in 1887 and the Pasadena Apartments, built in 1898-1902.

About this same time, in 1894, University of Michigan engineering graduates Henry G. Field and Theodore H. Hinchman, Jr. formed an engineering firm. They were known for their work in converting existing buildings from gas lighting to electricity. "Equally important in their early work was the planning and installation of business and residential telephone facilities for a host of small telephone companies."^{iv}

Based on the Adler & Sullivan and Burnham & Root models in Chicago, Fred Smith realized the benefit of partnering with engineers. Albert Kahn was the only other Detroit firm to do so at the time. In 1903 the firm of Field, Hinchman, & Smith was incorporated. The incorporation form of business

^{iv} Thomas Holleman and James P. Gallagher, *Smith, Hinchman & Grylls* (Detroit: Wayne State University Press, 1978), 61.

was unusual for architects and engineers at the time, but was done to build capital. In 1906 George Fields resigned, H.J. Maxwell Grylls joined the firm, and the name was changed to Smith, Hinchman & Grylls. Grylls was an architect from England who came to Detroit in 1883 and had worked previously for Mortimer Smith and was friends with Fred. Grylls was one of the founding members of the Detroit Society of Arts and Crafts.

In 1922, architect Wirt Rowland joined the firm, leaving Albert Kahn after working on the Detroit Athletic Club, the Detroit News headquarters, and the General Motors building. Rowland was known for his contemporary designs, which he fully developed with Smith, Hinchman, and Grylls in Detroit's first skyscraper, the 1925 Buhl Building. He also designed the 1925 Second National Bank Building in Saginaw, and the 1926 Grand Rapids Trust Company building. In 1927 Rowland designed two more pivotal skyscrapers in downtown Detroit, the Penobscot Building, and the Union Guardian Building (National Historic Landmark). By 1929 Smith, Hinchman, and Grylls had grown to 250 employees and William E. Kapp was the head of the architectural department.

The lack of work in the 1930s resulted in major layoffs, including Wirt Rowland and William Kapp. As small commissions came in the designers would be called back temporarily; however the projects were always small, and at the peak of the depression the firm only had two permanent employees to assist the four officers of the company. Founders Hinchman, Smith, and Grylls all died between 1935 and 1942. However, the firm continued and in 1942 Minoru Yamasaki was hired as the head designer. In 1944 the office had a new record high of 700 employees, and was busy with the post-war rebuilding effort. In 1948 the firm was named as the co-architects and engineers for the Eliel and Eero Saarinen designed General Motors Tech Center in Warren because of the friendship between Saarinen and Yamasaki. The firm continues to exist into the present day as SmithGroup with offices throughout the United States and over 800 employees.

The relationship with Michigan Bell Telephone began early on. "An industry which has played an important role in the success of Smith, Hinchman & Grylls is Detroit's telephone utility, which dates from 1877 when James McMillan obtained the franchise. ...and the Home Telephone Company became Detroit's largest through various mergers and takeovers. Smith, Hinchman & Grylls, with early experience in electricity and telephones, planned the company's main building and exchange. This client relationship continued when it became the Michigan State Telephone Company, and then in 1924, Michigan Bell Telephone Company."^v In 1904 the firm designed the Main City Exchange, located at John R and Madison, and it then went on to design the branch exchanges which duplicated the main building on a smaller scale. This main exchange was replaced in 1912 with the bottom half of the Michigan State Telephone Headquarters located on Cass Avenue in downtown Detroit. In 1927 the Michigan Bell Telephone Company added another twelve stories to the building, again using Smith, Hinchman & Grylls. Even though the design aesthetic had shifted slightly, the upper stories blend with the lower half.

A review of the firm's partial project list reveals numerous telephone buildings including offices and exchange buildings throughout Michigan with the largest number being in the 1920s and again in the 1940s and 1950s. The 1920s designs seen around Detroit and in *The Michigan Bell* include many Art Deco and Moderne designs, but all are designed to fit in with their surroundings. Michigan Bell made a point of this in their August, 1931, edition of *The Michigan Bell*, "Since 1925 our company has erected forty-five new buildings, each on a practical, yet a definite contribution to the appearance

^v Ibid., 83.

of the community where it is located," and "It is interesting to note that the cost of erecting a building that adds dignity and beauty to a community is not greater than the cost of a plain structure."^{vi}

"The tremendous postwar expansion of the Michigan Bell Telephone Company into the burgeoning suburbs around all major cities in the state brought commissions for new exchanges and additions to older ones into SH&G every month."^{vii} In 1957 the Northwest Staff Center in Southfield was designed, inspired by the work on the GM Technical Center. "Beautifully landscaped with trees and shrubs, the forty-acre site was developed following the 'office park' concept, and was similar in environmental feeling to the emerging General Motor Technical Center."^{viii} In 1974 the firm was hired to design a large seventeen-story addition to the Michigan Bell headquarters building in downtown Detroit. The design moved far away from the Art Deco and Moderne designs of the 1920s with "clearly articulated Cor-Ten steel and bronze glass tower with end walls of polished granite."^{ix}

Developmental history/additional historic context information (if appropriate)

N/A

9. Major Bibliographical References

Bibliography (Cite the books, articles, and other sources used in preparing this form)

Adams, Stephen B. and Orville R. Butler. *Manufacturing the Future: A History of Western Electric*. Cambridge, UK: Cambridge University Press, 1999.

"Bell System Salvage Totals Over 250 Tons a Month in Michigan." *News Lines, Michigan Bell Telephone Company*, November 1942, 1.

^{vi} *The Michigan Bell*, August 1931, 1.

^{vii} Holleman, 157.

^{viii} *Ibid.*, 157.

^{ix} *Ibid.*, p. 160.

"General Store." *The Michigan Bell*, March 1950, 24-26.

Holleman, Thomas J. and James P. Gallagher. *Smith, Hinchman and Grylls: 125 Years of Architecture and Engineering, 1853-1978*. Detroit: Wayne State University Press, 1978.

"Permits." *Journal of the Detroit City Council*. January 24, 1961.

The Michigan Bell, August 1931, 1.

Michigan Bell Public Information Section. *History of the Telephone in Michigan*. Michigan Bell Telephone Company, 1965.

Michigan Bell Telephone. *Michigan Bell Annual Reports*, Michigan Bell Telephone, years 1957, 1958, 1959, and 1960.

"New Supply, Garage and Shops Building in Detroit: Marvel of Efficiency." *The Michigan Bell*, October 1930, 1-4.

"New Warehouse, Supplies Structure for Detroit is Being Occupied Now." *The Michigan Bell*, June 1930, 3.

The Telephone in Michigan. unknown publisher, 1950.

"The Telephone Industry in Michigan." *Michigan Graphic*, September 1930, 3-8.

"Warehouse and Garage Costing Million and Half is Projected." *The Michigan Bell*, August 1929, 11.

"Western Electric Contributes to Good Telephone Service." *The Michigan Bell*, September 1949, 22-23.

Previous documentation on file (NPS):

- preliminary determination of individual listing (36 CFR 67 has been Requested)
- previously listed in the National Register
- previously determined eligible by the National Register
- designated a National Historic Landmark
- recorded by Historic American Buildings Survey # _____
- recorded by Historic American Engineering Record # _____

Primary location of additional data:

- State Historic Preservation Office
- Other State agency
- Federal agency
- Local government
- University
- Other

Name of repository: _____

Historic Resources Survey Number (if assigned): N/A

10. Geographical Data

Acreage of Property 3.94
(Do not include previously listed resource acreage)

UTM References

(Place additional UTM references on a continuation sheet)

1 17 326000 4696455 3 _____

Zone Easting Northing
2 _____
Zone Easting Northing

Zone Easting Northing
4 _____
Zone Easting Northing

Verbal Boundary Description (describe the boundaries of the property)

Land in the City of Detroit, County of Wayne, State of Michigan, described as: All that part of 1/4 of section 6, 10,000 Acre Tract, City of Detroit, Wayne County, Michigan, more particularly described as follows: Beginning at an iron stake fixing the intersection of the north line of Oakman Boulevard and the easterly line of Woodrow Wilson Avenue, formerly known as Oakman Avenue; thence easterly along the northerly line of Oakman Boulevard, north 64 degrees 13 minutes east 340.35 feet to an iron stake; thence north 26 degrees 20 minutes west to the southerly line of the Pennsylvania Detroit Railroad right-of-way; thence westerly along said southerly line of the Pennsylvania Detroit Railroad right-of-way, 340.2 feet to the easterly line of Woodrow Wilson Avenue, south 26 degrees 19 minutes east to the place of the beginning.

Commonly known as 882 Oakman Boulevard/14300 Woodrow Wilson.

Boundary Justification (explain why the boundaries were selected)

The boundary is the entire parcel historically and currently associated with the building.

11. Form Prepared By

name/title Kristine M. Kidorf
organization Kidorf Preservation Consulting date May, 2009
street & number 451 E. Ferry Street telephone 313-300-9376
city or town Detroit state MI zip code 48202
e-mail kristine@kidorfpreservationconsulting.com

Additional Documentation

Submit the following items with the completed form:

- **Maps:** A **USGS map** (7.5 or 15 minute series) indicating the property's location.
A **Sketch map** for historic districts and properties having large acreage or numerous resources. Key all photographs to this map.
- **Continuation Sheets**
- **Additional items:** (Check with the SHPO or FPO for any additional items)

Photographs:

Submit clear and descriptive photographs. The size of each image must be 1600x1200 pixels at 300 ppi (pixels per inch) or larger. Key all photographs to the sketch map.

Name of Property: Michigan Bell and Western Electric Warehouse

City or Vicinity: Detroit

County: Wayne State: MI

Photographer: Kristine M. Kidorf

Date Photographed: April 15, 2008

Printed using Hewlett-Packard Vivera Inks (95 tri-color cartridge) on HP Premium Plus Photo Paper (high gloss).

Description of Photograph(s) and number: View from Lodge Freeway overpass, looking northeast.

1 of _12. MI_Wayne_MIBell0001.tif

Description of Photograph(s) and number: View from south, looking northeast.

2 of _12. MI_Wayne_MIBell0002.tif

Description of Photograph(s) and number: West elevation looking northeast.

3 of _12. MI_Wayne_MIBell0003.tif

Description of Photograph(s) and number: East elevation looking northwest.

4 of _12. MI_Wayne_MIBell0004.tif

Description of Photograph(s) and number: North elevation looking south.

5 of _12. MI_Wayne_MIBell0005.tif

Description of Photograph(s) and number: Detail of entrance and tower, looking north.

6 of _12. MI_Wayne_MIBell0006.tif

Description of Photograph(s) and number: Detail of entrance looking north.

7 of _12. MI_Wayne_MIBell0007.tif

Description of Photograph(s) and number: Entrance lobby looking south.

8 of _12. MI_Wayne_MIBell0008.tif

Description of Photograph(s) and number: First floor hall looking west.

9 of _12. MI_Wayne_MIBell0009.tif

Description of Photograph(s) and number: East warehouse looking north.

10 of _12. MI_Wayne_MIBell0010.tif

Description of Photograph(s) and number: West garage looking southwest.

11 of _12. MI_Wayne_MIBell0011.tif

Description of Photograph(s) and number: **Second floor looking west.**

12 of _12. MI_Wayne_MIBell0012.tif

Property Owner:

name Focus:Hope, William F. Jones, Jr., CEO
street & number 1355 Oakman Boulevard telephone 313-494-5500
city or town Detroit state MI zip code 48238

Paperwork Reduction Act Statement: This information is being collected for applications to the National Register of Historic Places to nominate properties for listing or determine eligibility for listing, to list properties, and to amend existing listings. Response to this request is required to obtain a benefit in accordance with the National Historic Preservation Act, as amended (16 U.S.C.460 et seq.).
Estimated Burden Statement: Public reporting burden for this form is estimated to average 18 hours per response including time for reviewing instructions, gathering and maintaining data, and completing and reviewing the form. Direct comments regarding this burden estimate or any aspect of this form to the Office of Planning and Performance Management, U.S. Dept. of the Interior, 1849 C. Street, NW, Washington, DC.

UNITED STATES DEPARTMENT OF THE INTERIOR
NATIONAL PARK SERVICE

NATIONAL REGISTER OF HISTORIC PLACES
EVALUATION/RETURN SHEET

REQUESTED ACTION: NOMINATION

PROPERTY NAME: Michigan Bell and Western Electric Warehouse

MULTIPLE NAME:

STATE & COUNTY: MICHIGAN, Wayne

DATE RECEIVED: 10/30/09 DATE OF PENDING LIST: 11/18/09
DATE OF 16TH DAY: 12/03/09 DATE OF 45TH DAY: 12/13/09
DATE OF WEEKLY LIST:

REFERENCE NUMBER: 09001069

REASONS FOR REVIEW:

APPEAL: N DATA PROBLEM: N LANDSCAPE: N LESS THAN 50 YEARS: N
OTHER: N PDIL: N PERIOD: N PROGRAM UNAPPROVED: N
REQUEST: N SAMPLE: N SLR DRAFT: N NATIONAL: N

COMMENT WAIVER: N

ACCEPT RETURN REJECT 12-8-09 DATE

ABSTRACT/SUMMARY COMMENTS:

**Entered in
The National Register
of
Historic Places**

RECOM./CRITERIA _____

REVIEWER _____ DISCIPLINE _____

TELEPHONE _____ DATE _____

DOCUMENTATION see attached comments Y/N see attached SLR Y/N

If a nomination is returned to the nominating authority, the nomination is no longer under consideration by the NPS.



Find it Fast
**YELLOW
PAGES**

WOW!
Sign up now and get a 10¢/gallon rebate!
VALERO
A Shell Company

ALL TRUCKS USE
RIGHT 2 LANES

MICHIGAN BELL & WESTERN ELECTRIC WAREHOUSE
WAYNE CO., MI

0001

HP Premium Plus

HP Premium Plus

HP Premium Plus



HP Premium Plus

HP Premium Plus

HP Premium Plus



Find it Fast
**YELLOW
PAGES**

Central

MICHIGAN BELL & WESTERN ELECTRIC WAREHOUSE

WAYNE CO, MI

0002

HP Premium Plus

HP Premium Plus



HP Premium Plus

HP Premium Plus

HP Premium Plus



MICHIGAN BELL & WESTERN ELECTRIC WAREHOUSE

WAYNE CO., MI

0003



HP Premium Plus

HP Premium Plus

HP Premium Plus

HP Premium Plus





WORLD
BLOOR
PLAZA

MICHIGAN BELL & WESTERN ELECTRIC WAREHOUSE
WAYNE CO, MI

0004



MICHIGAN BELL & WESTERN ELECTRIC WAREHOUSE

WAYNE CO., MI

0005



HP Premium Plus

HP Premium Plus

HP Premium Plus



HP Premium

HP Premium

HP Premium

Find It Fast
**YELLOW
PAGES**



MICHIGAN BELL & WESTERN ELECTRIC WARE HOUSE
WAYNE CO., MI

0006



HP Premium

HP Premium Plus



HP Premium

HP Premium Plus



HP Premium

HP Premium Plus





MICHIGAN BELL & WESTERN ELECTRIC WAREHOUSE
WAYNE CO, MI

0007

HP Premium Plus

HP Premium Plus



HP Premium Plus

HP Premium Plus

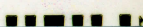


HP Premium Plus

HP Premium Plus



HP Premium Plus





MICHIGAN BELL & WESTERN ELECTRIC WAREHOUSE

WAYNE CO, MI

0008



HP premium plus



HP premium plus



HP premium plus



HP premium plus



HP premium plus



HP premium plus



MICHIGAN BELL & WESTERN ELECTRIC WAREHOUSE

WAYNE CO., MI

0009

HP Premium Plus

HP Premium Plus



HP Premium Plus

HP Premium Plus

HP Premium Plus



MICHIGAN BELL & WESTERN ELECTRIC WAREHOUSE
WAYNE CO, MI

0010

HP Premium Plus

HP Premium Plus

HP Premium Plus



HP Premium Plus

HP Premium Plus

HP Premium Plus

us



NO SMOKING

MICHIGAN BELL & WESTERN ELECTRIC WAREHOUSE

WAYNE CO., MI

0011



HP Premium Plus

HP Premium Plus

HP Premium Plus



HP Premium Plus

HP Premium Plus

HP Premium Plus



MICHIGAN BELL & WESTERN ELECTRIC WAREHOUSE

WAYNE CO., MI

0012



HP Premium Plus

HP Premium Plus

HP Premium Plus



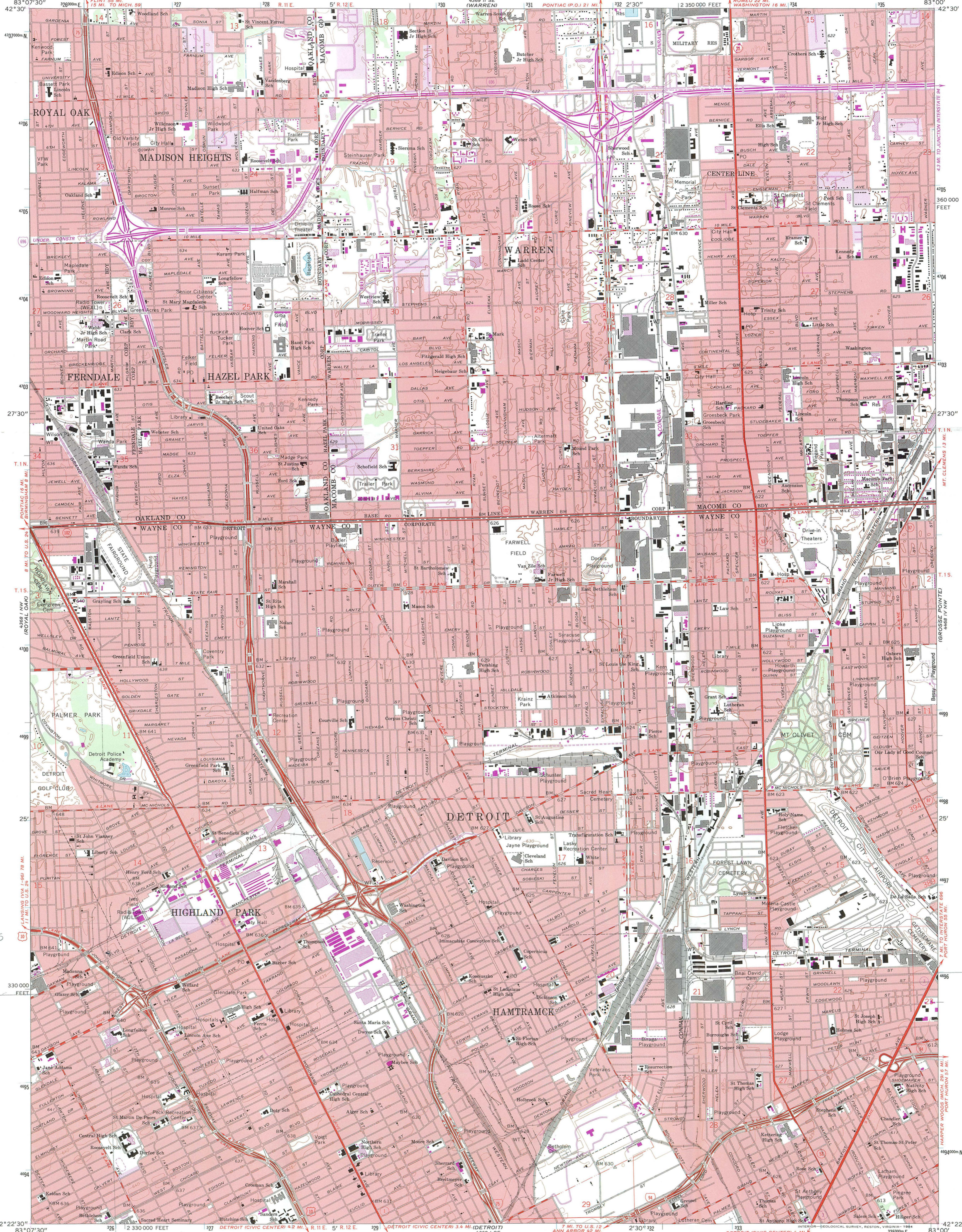
HP Pre

HP Pre

HP Pre

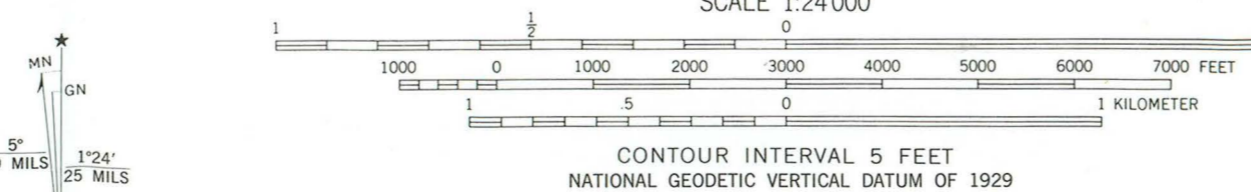
UNITED STATES
DEPARTMENT OF THE INTERIOR
GEOLOGICAL SURVEY

HIGHLAND PARK QUADRANGLE
MICHIGAN
7.5 MINUTE SERIES (TOPOGRAPHIC)



Michigan Bell & Western
Electric wire house
Detroit, Wayne Co, MI
17 326000 4866455

Mapped, edited, and published by the Geological Survey in cooperation with State of Michigan agencies
Control by USGS, USC&GS, and City of Detroit
Planimetry by photogrammetric methods from aerial photographs
Topography by planetable surveys 1938. Revised from aerial photographs taken 1967. Field checked 1968
Polyconic projection. 1927 North American datum
10,000-foot grid based on Michigan coordinate system, south zone
1000-meter Universal Transverse Mercator grid ticks, zone 17, shown in blue
Red tint indicates areas in which only landmark buildings are shown
To place on the predicted North American Datum 1983, move the projection lines 7 meters west as shown by dashed corner ticks



ROAD CLASSIFICATION

Primary highway, all weather, hard surface	Light-duty road, all weather, improved surface
Secondary highway, all weather, hard surface	Unimproved road, fair or dry hard surface
Interstate Route	U. S. Route
	State Route

THIS MAP COMPLIES WITH NATIONAL MAP ACCURACY STANDARDS
FOR SALE BY U.S. GEOLOGICAL SURVEY, DENVER, COLORADO 80225, OR RESTON, VIRGINIA 22092
AND GEOLOGICAL SURVEY DIVISION
MICHIGAN DEPARTMENT OF NATURAL RESOURCES, LANSING, MICHIGAN 48909
A FOLDER DESCRIBING TOPOGRAPHIC MAPS AND SYMBOLS IS AVAILABLE ON REQUEST



HIGHLAND PARK, MICH.
N4222.5-W8300.7.5

1968
PHOTOREVISED 1983
DMA 4368 I NE—SERIES V862

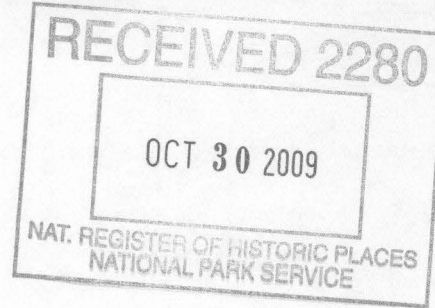




STATE OF MICHIGAN
MICHIGAN STATE HOUSING DEVELOPMENT AUTHORITY
LANSING

JENNIFER GRANHOLM
GOVERNOR

KEITH MOLIN
EXECUTIVE DIRECTOR



October 5, 2009

Ms. Janet Matthews, Keeper
National Register of Historic Places
National Park Service
1201 Eye Street, NW, 8th Floor
Washington, DC 20005

Dear Ms. Matthews:

Enclosed are national register nomination forms for the Michigan Bell and Western Electric Warehouse in Detroit, Wayne County, Michigan. This property is being submitted for listing in the national register. No written comments concerning this nomination were submitted to us prior to the submission of this nomination to you.

Questions concerning this nomination should be addressed to Robert O. Christensen, national register coordinator, by phone at 517/335-2719 or by email at christensenro@michigan.gov.

Sincerely yours,

Brian D. Conway
State Historic Preservation Officer

BDC:roc

