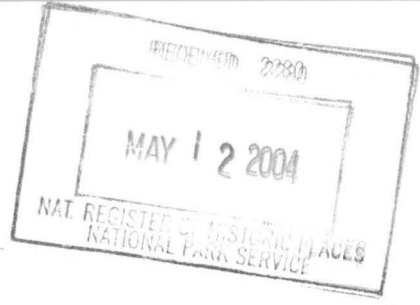


United States Department of the Interior
National Park Service



**NATIONAL REGISTER OF HISTORIC PLACES
REGISTRATION FORM**

This form is for use in nominating or requesting determinations for individual properties and districts. See instructions in *How to Complete the National Register of Historic Places Registration Form* (National Register Bulletin 16A). Complete each item by marking "x" in the appropriate box or by entering the information requested. If any item does not apply to the property being documented, enter "N/A" for "not applicable." For functions, architectural classification, materials, and areas of significance, enter only categories and subcategories from the instructions. Place additional entries and narrative items on continuation sheets (NPS Form 10-900a). Use a typewriter, word processor, or computer, to complete all items.

1. Name of Property

historic name Campbell, Calvin A. and Alta Koch, House

other names/site number Campbell House

2. Location

street & number 1210 West Park Drive

not for publication

city or town Midland

vicinity

state Michigan

code MI

county Midland

code 111

zip code 48640

3. State/Federal Agency Certification

As the designated authority under the National Historic Preservation Act of 1986, as amended, I hereby certify that this nomination request for determination of eligibility meets the documentation standards for registering properties in the National Register of Historic Places and meets the procedural and professional requirements set forth in 36 CFR Part 60. In my opinion, the property meets does not meet the National Register Criteria. I recommend that this property be considered significant nationally statewide locally. (See continuation sheet for additional comments.)

[Signature]
Signature of certifying official

5/4/04
Date

MI SHPO
State or Federal agency and bureau

In my opinion, the property meets does not meet the National Register criteria. (See continuation sheet for additional comments.)

Signature of commenting or other official/Title

Date

State or Federal agency and bureau

4. National Park Service Certification

I hereby certify that this property is:

[Signature]
Signature of the Keeper

Date of Action

entered in the National Register
 See continuation sheet.

determined eligible for the National Register
 See continuation sheet.

determined not eligible for the National Register

removed from the National Register

other (explain):

5. Classification

Ownership of Property
(Check as many boxes as apply)

- private
- public-local
- public-State
- public-Federal

Category of Property
(Check only one box)

- building(s)
- district
- site
- structure
- object

Number of Resources within Property
(Do not include previously listed resources in the count.)

Contributing	Noncontributing	
1	0	buildings
0	0	sites
0	0	structures
0	0	objects
1	0	Total

Name of related multiple property listing
(Enter "N/A" if property is not part of a multiple property listing.)

Number of contributing resources previously listed in the National Register

Residential Architecture of Alden B. Dow in Midland Michigan 1939-1941

N/A

6. Function or Use

Historic Functions
(Enter categories from instructions)

Domestic/Single Dwelling - House

Current Functions
(Enter categories from instructions)

Domestic/Single Dwelling - House

7. Description

Architectural Classification
(Enter categories from instructions)

Modern Movement

Materials
(Enter categories from instructions)

foundation Concrete
walls Brick
Homosote
roof Salem Shingle/Copper Shingle
other Concrete
Glass Block

Narrative Description
(Describe the historic and current condition of the property on one or more continuation sheets.)

United States Department of the Interior
National Park Service

NATIONAL REGISTER OF HISTORIC PLACES CONTINUATION SHEET

Section 7 Page 1 of 5

Campbell, Calvin A. and Alta Koch, House
Name of Property

Midland County, MI
County and State

Residential Architecture of Alden B. Dow in Midland, MI 1939-1941
Name of Multiple Property Listing

Campbell, Calvin A. and Alta Koch, House Midland County, Michigan

Narrative Description

The Campbell House is a two and one-half story, modified T-plan, brick and panel house with a hipped roof. The neighborhood is considered to be Midland's Historic District and a desirable location in which to live. It is full of large homes of various designs. Built into a dead-end corner lot "valley" made up of a hillside at the rear of the house and an elevated front lawn on a large corner lot that backs up to the Dow Gardens, the south-facing house is an elegant example of the prewar architecture of Alden B. Dow. Because of the uneven lawn contour, the library windows overhang those of the dining room, while the living room on the same level opens directly to an outside terrace to the rear gardens.

At the south and west, the second floor overhangs the first with a series of large windows anchored by homosote panels and vertical wood battens. The homosote soffit under the deep eaves is also marked with battens. The battens form a continuous line with the window frames. A double garage, topped by an open terrace and a screened porch, extends from the west side. A curving driveway leads from the front street past the entrance and garage, and out to the side street. On the east side, a single story brick wall stretches from the front corner of the house into the sloping yard. A large shed dormer emerges from the roof on the west side. The first floor includes a game room, dining room, kitchen, and utility room; the second, a living room, library, and three bedrooms. There is a fourth bedroom on the third level under the dormer. The interiors are marked by such characteristic Dow features as an open floor plan, built-in linoleum-topped shelves and window seats, edge-grain fir trim, and an abundance of storage cupboards, closets, and drawers. The property, which was owned by Mrs. Campbell until recently, is in very good condition with little alteration. A new room was put on in 1997.

The exterior of the house is a harmonious balance of wood and brick, open and solid, horizontal and vertical. The first floor is brick, its solid mass broken by large windows with concrete sills. The garage is also brick, with a pair of wooden garage doors, each with a row of four small square windows. On the east side, a long brick wall conceals a small concrete-paved courtyard with a door into the kitchen. The second floor is marked by long bands of windows on the south and west. Framed in varnished wood, they are set off by the homosote panel and wood batten construction that extends from the brick to support them. The homosote panels, which have been painted a creamy

United States Department of the Interior
National Park Service

**NATIONAL REGISTER OF HISTORIC PLACES
CONTINUATION SHEET**

Section 7 Page 2 of 5

Campbell, Calvin A. and Alta Koch, House
Name of Property

Midland County, MI
County and State

Residential Architecture of Alden B. Dow in Midland, MI 1939-1941
Name of Multiple Property Listing

**Campbell, Calvin A. and Alta Koch, House
Midland County, Michigan**

Narrative Description (Continued)

white for many years, were originally painted a turquoise green. On the east and north facades, large windows are set directly in the brick. A large covered screened porch on the back west side of the house extends over the garage. Three horizontal wooden rails encircle the screen and brick wall of the porch at chair rail height. The rest of the garage room is an open, brick-paved terrace. At the back, it is flush with and open to the lawn. At the front it overlooks the driveway and leads to the front entrance by way of a narrow brick quarter-turn stair that bends around a raised brick flower box.

Three long brick steps that run the length of the house along the driveway approach the house. A broad front door, tucked under the overhang of the second floor, opens onto a brick-floored foyer which in turn opens to each area of the house: to the left (back): the game room and, beyond it, the garage; straight ahead: the kitchen, utility room and back stair; to the right (front): the dining room; and up the central open stairway: the main living areas and bedrooms.

Edge-grain fir cupboards housing storage and heating components line the wall under the windows between the front door and the dining room. The original linoleum top has been replaced with formica. The focal point of the dining room is the large window across the front of the room, framed in on either side by open wooden shelves reaching to the ceiling, and a bench below. The view of the front lawn is reflected in the mirror on the opposite interior wall, which surmounts a built-in serving counter and a range of drawers, six drawers high and three wide. These drawers are built-in under the stair landing, which overlooks the dining room. The recessed ceiling light is framed by a four paned square wood frame fitted with frosted glass.

At the other side of the foyer, two brick steps at the left lead down to the game room. To the left, before descending, is a closet with floor to ceiling wood doors with long vertical wooden pulls. To the right of the steps is a low, narrow fireplace with a brick hearth and plaster chimneybreast. In the corner beyond the fireplace, a two-foot wide edge-grain fir panel reaches from floor to ceiling. The bottom two-foot section of the panel is a small door opening to the utility room, where firewood is stored. The windows in the room are of glass block. Light also comes from recessed fluorescent ceiling lights along the exterior wall. A hallway at the back of the room leads to a lavatory and the garage.

United States Department of the Interior
National Park Service

NATIONAL REGISTER OF HISTORIC PLACES
CONTINUATION SHEET

Section 7 Page 3 of 5

Campbell, Calvin A. and Alta Koch, House
Name of Property

Midland County, MI
County and State

Residential Architecture of Alden B. Dow in Midland, MI 1939-1941
Name of Multiple Property Listing

Campbell, Calvin A. and Alta Koch, House
Midland County, Michigan

Narrative Description (Continued)

Directly across the foyer from the front door is the back hall. At the left end of this hall is the large utility/laundry room, straight ahead originally was a maid's room and bathroom, and, from there to the right the hall had opened into a small L-shaped kitchen. Renovations to the kitchen in 1999 by the previous owners removed the front wall to the maid's room and removed the adjoining bathroom completely, opening up the kitchen space so that it is expanded across the hallway and windows from the maid's room allow more light into the kitchen area. No outside structural changes to the home were made during this renovation, and, although the cabinets, counter, appliances and door and window trim are new, the newness is neither startling nor overtly noticeable as careful attention to Dow's original vision keeps the renovated space matching the rest of the home. A window on the south wall over the sink looks onto a private patio. From the house, the patio is accessed by a floor to ceiling door to the right of the sink. An adjacent door swings open to the dining room. Between the two doors is a frosted glass panel with a tiny circular peephole polished in at eye level. An enclosed back service stairway leads up to the bedroom hall on the second floor. A closet at the foot of the service stair connects via a crawl space under the main stair to the closet in the foyer.

The central stair, essentially the core of the house, comes up on the second floor into a large space open from the front of the house to the back. The sweep of space encompasses the front study and rear living room, with broad expanses of windows facing north, south and west. The study is lined with open bookshelves on each side, a window bench along the front, and banks of drawers against the stair half wall. The living room at the back of the house looks out over the backyard and into Dow Gardens. A door in the west wall leads to the screened porch over the garage. Across the room, a fireplace alcove features a characteristically low fireplace with brick hearth and plaster chimneybreast. Built-in cupboards at either end anchor a built-in sofa perpendicular to the fireplace wall, with a mirrored wall above reflecting light from the west windows in an otherwise dark interior corner. Recessed fluorescent lights mark the ceiling over the sofa.

The division of public and private zones in the Campbell House runs from front **to** back rather than the more usual dividing front **from** back. At one side are the living and entertaining spaces; on the other, bedrooms and service rooms. At the top of the stairs a doorway leads from public to private. The door has been removed, and the wall may have been altered when a stair lift (since removed)

United States Department of the Interior
National Park Service

NATIONAL REGISTER OF HISTORIC PLACES
CONTINUATION SHEET

Section 7 Page 4 of 5

Campbell, Calvin A. and Alta Koch, House
Name of Property

Midland County, MI
County and State

Residential Architecture of Alden B. Dow in Midland, MI 1939-1941
Name of Multiple Property Listing

Campbell, Calvin A. and Alta Koch, House
Midland County, Michigan

Narrative Description (Continued)

was installed about 1980. The doorway leads to the bedroom hall at the point where the back stair comes up.

The master bedroom is at the north end of the hall. A wall of built-in cupboards and closets extends along the west wall (backing onto the living room); the north wall has a mirrored section and then a large window in the northeast corner. The small master bath is in the southeast corner of the space, and originally had a half-wall creating a walkway to it that was banked with drawers on the walkway side. The half wall has since been removed and replaced with glass blocks offering a buffer between the bedroom space and the now more open style of bathroom. A high shelf (termed "deck" on the drawings) originally also sheltered this space, extended the line of the closet door heads around the room, lowered the ceiling, and created, in essence, a dressing area. Mid-1990 renovations removed this closet and shelf area, replacing it with an extended double marble-topped sink that runs along the length of the space. The mirrored panel that covered the narrow section of wall next to the bathroom door was also removed when the glass block was renovated. All the woodwork in the master bedroom has been painted.

The second bedroom has a built-in double door wardrobe in the southeast corner next to a built-in chest of drawers with a mirrored wall above. A window bench extends under the east-facing window.

The third bedroom, at the front end of the bedroom hall, has more extensive built-in cabinetry along its north wall, including a double door closet, a cupboard over a seven-drawer dresser, and open shelves over a cantilevered desk surface, which in turn extends over the window seat running along the east wall.

A tiled bathroom is at the front end of the hall, next to the enclosed back stairway leading to the third floor.

On the third floor, the stairs open onto a bedroom under the shed dormer (essentially over the second floor's middle bedroom), with an adjacent lavatory on the north side and a closet on the south side. Two doors in the west wall on either side of the chimneystack lead to attic storage.

**United States Department of the Interior
National Park Service**

**NATIONAL REGISTER OF HISTORIC PLACES
CONTINUATION SHEET**

Section 7 Page 5 of 5

Campbell, Calvin A. and Alta Koch, House
Name of Property

Midland County, MI
County and State

Residential Architecture of Alden B. Dow in Midland, MI 1939-1941
Name of Multiple Property Listing

**Campbell, Calvin A. and Alta Koch, House
Midland County, Michigan**

Narrative Description (Continued)

The Campbell House is placed advantageously on its sloping corner lot. Set well back from the street, there is a great sense of privacy within the house, despite the openness of the many-windowed design. A dead end street along the west side and the stand of trees in Dow Gardens to the north further enhance the privacy of the house.

8. Statement of Significance

Applicable National Register Criteria

(Mark "x" in one or more boxes for the criteria qualifying the property for National Register listing)

- A** Property is associated with events that have made a significant contribution to the broad patterns of our history.
- B** Property is associated with the lives of persons significant in our past.
- C** Property embodies the distinctive characteristics of a type, period, or method of construction or represents the work of a master, or possesses high artistic values, or represents a significant and distinguishable entity whose components lack individual distinction.
- D** Property has yielded, or is likely to yield, information important in prehistory or history.

Criteria Considerations

(Mark "X" in all the boxes that apply.)

Property is:

- A** owned by a religious institution or used for religious purposes.
- B** removed from its original location.
- C** a birthplace or a grave.
- D** a cemetery.
- E** a reconstructed building, object, or structure.
- F** a commemorative property.
- G** less than 50 years of age or achieved significance within the past 50 years.

Narrative Statement of Significance

(Explain the significance of the property on one or more continuation sheets.)

9. Major Bibliographical References

Bibliography

(Cite the books, articles, and other sources used in preparing this form on one or more continuation sheets.)

Previous documentation on file (NPS)

- preliminary determination of individual listing (36 CFR 67) has been requested.
- previously listed in the National Register
- previously determined eligible by the National Register
- designated a National Historic Landmark
- recorded by Historic American Buildings Survey # _____
- recorded by Historic American Engineering Record # _____

Areas of Significance

(Enter categories from instructions)

Architecture

Period of Significance

1939

Significant Dates

1939

Significant Person

(Complete if Criterion B is marked above)

N/A

Cultural Affiliation

N/A

Architect/Builder

Dow, Alden B _____

Dow, Alden, Building Company _____

Primary Location of Additional Data

- State Historic Preservation Office
- Other State agency
- Federal agency
- Local government
- University
- Other

Name of repository: Alden B. Dow Archives

United States Department of the Interior
National Park Service

**NATIONAL REGISTER OF HISTORIC PLACES
CONTINUATION SHEET**

Section 8 Page 1

Campbell, Calvin A. and Alta Koch, House
Name of Property

Midland County, MI
County and State

Residential Architecture of Alden B. Dow in Midland, MI 1939-1941
Name of Multiple Property Listing

**Campbell, Calvin A. and Alta Koch, House
Midland County, Michigan**

Statement of Significance

The Calvin Campbell house is a fine example of the maturing of Alden Dow's designs. From his early work with unit block or brick plans, Dow now mixes several building materials in a dynamic combination. While some of the broad geometric emphasis and the strongly compositional nature of his early work remains important, they are expressed in a different medium. Dow has updated his designs and continues to be innovated and dynamic. The Campbell house is elegant, yet eminently livable – an excellent statement of comfort, function, and good design.

Calvin A. Campbell, was vice president and general counsel of The Dow Chemical Company in the 1940s. He was a fraternity brother of Alden Dow's at the University of Michigan in the 1920s. On March 31, 1949, he and his wife, Alta, accompanied Mr. Willard Dow, president of Dow Chemical and brother of Alden, and his wife, Martha, to M.I.T. to hear Winston Churchill speak. The company plane that carried them went down in icy conditions over Ontario. Mr. Campbell was the sole survivor. In the resulting reorganization of the company, he was named Secretary of the Board of Directors.

In the summer of 1939, he contacted Dow about designing a home for him. At this time in Dow's career, he had begun moving away from the unit block and worked more frequently in other exterior materials. The plans for the house were drawn in the late summer and sent out for contractors' estimates. The contract went to the Fred C. Trier Construction Company with its bid of \$25,000.00 in September 1939. Work on the house began immediately and it was completed by the following July. The final cost amounted to \$26,585.78.

United States Department of the Interior
National Park Service

NATIONAL REGISTER OF HISTORIC PLACES
CONTINUATION SHEET

Section 9 Page 1of3

Campbell, Calvin A. and Alta Koch, House
Name of Property

Midland County, MI
County and State

Residential Architecture of Alden B. Dow in Midland, MI 1939-1941
Name of Multiple Property Listing

Campbell, Calvin A. and Alta Koch, House
Midland County, Michigan

Bibliography

1. "Alden B. Dow, Architect." Architectural Record (May 1941): 48-51.
2. "Alden B. Dow, Inc." Architecture and Design, vol. VII, no. 7 (June 1943).
3. Alden B. Dow Papers. Alden B. Dow Archives, Midland, Michigan.
4. "Alden Dow: His Modern Homes are Not Monastic." Life (March 15, 1948): 88-92.
5. "A Way of Life." Exhibition catalogue, Midland Art Council. Exhibition dates, June 1-August 31, 1975.
6. "Composed Order: The Architecture of Alden B. Dow." Exhibition catalogue, Midland Art Council. Exhibition dates September 11 – October 16, 1988.
7. "Kitchen's role has evolved; so have the contents." Midland Daily News (February 7, 1999).
8. "Nature's Beauty Figures in Construction of New Campbell Home." Midland Daily News (August 2, 1940).
9. Robinson, Sidney K. The Architecture of Alden B. Dow. Detroit: Wayne State University Press, 1983.
10. "Snapshots." Modern Homes in Michigan (June 1943): 49-53.
11. Waite, Robert G. The Residential Architecture of Alden B. Dow in Midland, Michigan, 1933-1945: A Thematic Nomination to the National Register of Historic Places (March 1987).

**United States Department of the Interior
National Park Service**

**NATIONAL REGISTER OF HISTORIC PLACES
CONTINUATION SHEET**

Section 9 Page 2 of 3

Campbell, Calvin A. and Alta Koch, House
Name of Property

Midland County, MI
County and State

Residential Architecture of Alden B. Dow in Midland, MI 1939-1941
Name of Multiple Property Listing

**Campbell, Calvin A. and Alta Koch, House
Midland County, Michigan**

Bibliography (Continued)

Graphic Resources in the Alden B. Dow Archives for the Campbell House

1. n.d., topography drawing, 1 sheet.
2. 26 May 1939, rendering, 1 sheet.
3. August 1939, presentation drawing: floor plans, 1 sheet.
4. August 1939, working drawings: plans, elevations, details, and third floor addition, 7 sheets.
5. August 1939, working drawing: first floor heating pipe layout, 1 sheet.
6. 23 September 1939, working drawings: construction details, 9 sheets.
7. November 1939, contract drawing: kitchen plan, 3 sheets.
8. 14 November 1939, working drawings: addition of third floor bath, 1 sheet.
9. n/d [c. 1980], working drawings: addition of stair lift, 2 sheets.

**United States Department of the Interior
National Park Service**

**NATIONAL REGISTER OF HISTORIC PLACES
CONTINUATION SHEET**

Section 9 Page 3 of 3

Campbell, Calvin A. and Alta Koch, House
Name of Property

Midland County, MI
County and State

Residential Architecture of Alden B. Dow in Midland, MI 1939-1941
Name of Multiple Property Listing

**Campbell, Calvin A. and Alta Koch, House
Midland County, Michigan**

Bibliography (Continued)

Textual Resources in the Alden B. Dow Archives for the Campbell House

1. Specifications: general, heating, plumbing fixtures, [c. September 1939].
2. Bids, 16 items, September – December 1939.
3. Contracts: general, between Mr. and Mrs. Calvin A. Campbell and Fred C. Trier Construction Co., 14 September 1939; for kitchen equipment, 30 November 1939; for water heater, 7 December 1939.
4. Certificates of payment, 9 items, October 1939 – July 1940.
5. Work sheets, 6 items, May 1955 – August 1956.
6. Correspondence, 12 items, December 1939 – February 1940.

10. Geographical Data

Acreage of Property less than one acre

UTM References

(Place additional UTM references on a continuation sheet)

1. 16 721920 4833420
Zone Easting Northing

3.
Zone Easting Northing

2.

4.
 See continuation sheet.

Verbal Boundary Description

(Describe the boundaries of the property on a continuation sheet.)

Boundary Justification

(Explain why the boundaries were selected on a continuation sheet.)

11. Form Prepared By

name/title Samantha Harrison Stand, Research Associate

organization Alden B. Dow Archives date 16 December 2003

street & number 315 Post Road telephone (989) 839-2744

city or town Midland state MI zip code 48640

Additional Documentation

Submit the following items with the completed form:

Continuation Sheets

Maps

A **USGS map** (7.5 or 15 minute series) indicating the property's location.

A **Sketch map** for historic districts and properties having large acreage or numerous resources.

Photographs

Representative **black and white photographs** of the property.

Additional items

(Check with the SHPO or FPO for any additional items)

Property Owner

(Complete this item at the request of the SHPO or FPO.)

name Mr. and Mrs. Steve Rossborough

street & number 1210 West Park Drive telephone

city or town Midland state MI zip code 48640

Paperwork Reduction Act Statement: This information is being collected for applications to the National Register of Historic Places to nominate properties for listing or determine eligibility for listing, to list properties, and to amend existing listings. Response to this request is required to obtain a benefit in accordance with the National Historic Preservation Act, as amended (16 U.S.C. 470 et seq.).

Estimated Burden Statement: Public reporting burden for this form is estimated to average 18.1 hours per response including the time for reviewing instructions, gathering and maintaining data, and completing and reviewing the form. Direct comments regarding this burden estimate or any aspect of this form to the Chief, Administrative Services Division, National Park Service, P.O. Box 37127, Washington, DC 20013-7127; and the Office of Management and Budget, Paperwork Reductions Project (1024-0018), Washington, DC 20503.

**United States Department of the Interior
National Park Service**

**NATIONAL REGISTER OF HISTORIC PLACES
CONTINUATION SHEET**

Section 10 Page 1

Campbell, Calvin A. and Alta Koch, House
Name of Property

Midland County, MI
County and State

Residential Architecture of Alden B. Dow in Midland, MI 1939-1941
Name of Multiple Property Listing

**Campbell, Calvin A. and Alta Koch, House
Midland County, Michigan**

Geographical Data

Verbal Boundary Description

Lots 22, 23, 24, 25 and West 44 of Lot 54, Park Realty Company's Parkside Addition, Midland City, Midland County, Michigan

Boundary Justification

The nominated property includes the entire parcel originally purchased by Mr. and Mrs. Calvin A. Campbell.

**United States Department of the Interior
National Park Service**

**NATIONAL REGISTER OF HISTORIC PLACES
CONTINUATION SHEET**

Section Photographs and Slides Page 1 of 1

Campbell, Calvin A. and Alta Koch, House
Name of Property

Midland County, MI
County and State

Residential Architecture of Alden B. Dow in Midland, MI 1939-1941
Name of Multiple Property Listing

**Campbell, Calvin A. and Alta Koch, House
Midland County, Michigan**

Additional Documentation – Photographs

Photographs (Dan Denardo, photographer; interiors: August 1998 and exteriors: October 1998 unless otherwise noted)

1. South (front) facade.
2. East facade.
3. North (rear) facade.
4. Terrace and screened porch, from northwest.
5. West facade, with garage and entrance.
6. Hallway from entrance toward dining room.
7. Dining room case, with stairs behind (entry at back left, door to kitchen at right).
8. Dining room windows and shelves.
9. Library, looking across case and open stairway.
10. Living room, toward stairs and library.
11. Bedroom hallway, from top of back stair into master bedroom.
12. Second bedroom (middle), detail.
13. Third bedroom (front), detail.
14. South (front) and west facades (Elmer Astleford, photographer, ca. 1940s)
15. From stairs across foyer to game room (Elmer Astleford, photographer, ca. 1940s)

UNITED STATES DEPARTMENT OF THE INTERIOR
NATIONAL PARK SERVICE

NATIONAL REGISTER OF HISTORIC PLACES
EVALUATION/RETURN SHEET

REQUESTED ACTION: NOMINATION

PROPERTY NAME: Campbell, Calvin A. and Alta Koch, House

MULTIPLE NAME: Residential Architecture of Alden B. Dow in Midland, Michigan MPS AD

STATE & COUNTY: MICHIGAN, Midland

DATE RECEIVED: 5/12/04 DATE OF PENDING LIST: 6/03/04
DATE OF 16TH DAY: 6/18/04 DATE OF 45TH DAY: 6/25/04
DATE OF WEEKLY LIST:

REFERENCE NUMBER: 04000642

REASONS FOR REVIEW:

APPEAL: N DATA PROBLEM: N LANDSCAPE: N LESS THAN 50 YEARS: N
OTHER: N PDIL: N PERIOD: N PROGRAM UNAPPROVED: N
REQUEST: N SAMPLE: N SLR DRAFT: N NATIONAL: N

COMMENT WAIVER: N

ACCEPT RETURN REJECT 6/22/04 DATE

ABSTRACT/SUMMARY COMMENTS:

Entered in the
National Register

RECOM./CRITERIA _____

REVIEWER _____ DISCIPLINE _____

TELEPHONE _____ DATE _____

DOCUMENTATION see attached comments Y/N see attached SLR Y/N

If a nomination is returned to the nominating authority, the nomination is no longer under consideration by the NPS.



Campbell House
Midland, MI

Dan Denardo
Oct. 1998

Alden B. Dow Archives
315 Post Street
Midland, MI 48640

South (front) facade.

1.

#14



Campbell House
Midland, MI

Dan Denardo
Oct. 1998

Alden B. Dow Archives
315 Post Street
Midland, MI 48640

East facade.
2.

THIS PAPER
MANUFACTURED
BY KODAK

THIS PAPER
MANUFACTURED
BY KODAK

THIS PAPER
MANUFACTURED
BY KODAK

THIS PAPER
MANUFACTURED
BY KODAK

APER
CTURED
ODAK

THIS PAPER
MANUFACTURED
ODAK

THIS PAPER
MANUFACTURED
ODAK

THIS PAPER
MANUFACTURED
ODAK

THIS P
UCA



Campbell House
Midland, MI

Dan Denardo
oct. 1998

Alden B. Dow Archives
315 Post Street
Midland, MI 48664

North (rear) facade.
3.



Campbell House
Midland, MI

Dan Denardo
Oct. 1998

Alden B. Dow Archives
315 Post Street
Midland, MI 48640

Terrace and screened porch, from northwest.
4.



Campbell House
Midland, MI

Dan Denardo
Oct. 1998

Alden B. Dow Archives
315 Post Street
Midland, MI 48640

West facade, with garage and entrance.

5.



Campbell House
Midland, MI

Dan Denardo
Aug. 1998

Alden B. Dow Archives
315 Post Street
Midland, MI 48664

Hallway from entrance to dining room.
6.



Campbell House
Midland MI

Dan Denardo,
Aug. 1998

Alden B. Dow Archives
315 Post Street
Midland, MI 48640

Dining Room case, with stairs behind (entry at back left,
door to Kitchen at right).

7.



Campbell House
Midland MI

Dan Denardo
Aug 1998

Alden B Dow Archives
315 Post Street
Midland MI 48640

Dining room windows and shelves
8.

#5

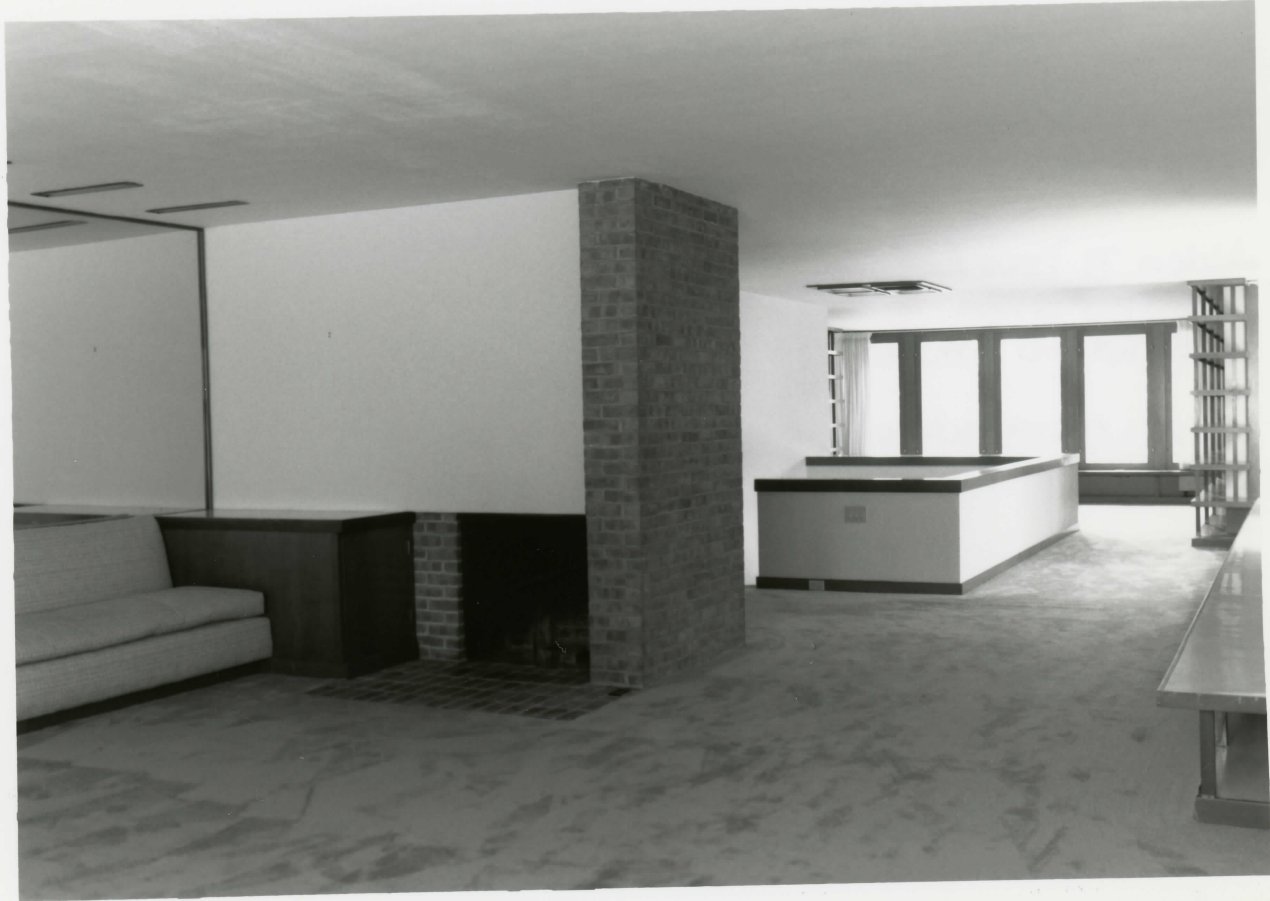


Campbell House
Midland MI

Dan Denardo
Aug. 1998

Alden B. Dow Archives
315 Post Street
Midland, MI 48640

Library, looking across case and open stairway
9.



Campbell House
Midland, MI

Dan Denardo
Aug. 1998

Alden B. Dow Archives
315 Post Street
Midland MI 48664

Living room, toward stairs and library
10.



Campbell House
Midland MI

Dan Denardo
Aug 1998

Alden B. Dow Archives
315 Post Street
Midland MI 48604

Bedroom hallway, from top of back stair into
11. master bedroom.

#22



Campbell House
Midland, MI

Dan Denardo
Aug. 1998

Alden B. Dow Archives
315 Post Street
Midland, MI 48640

Bedroom #2 (middle), detail.
12.



Campbell House
Midland, MI

Dan Denardo
Aug. 1998

Alden B. Dow Archives
315 Post Street
Midland, MI 48640

Bedroom # 3 (front), detail.
13.



Campbell House
Midland, MI
Elmer Astleford (EA/1550)

n.d. (c. 1940s)

Alden B. Dow Archives
315 Post Street
Midland, MI 48804

South (front) and west facades.

14.



Elmer Astleford (EA/1548)

n.d. (c. 1940s)

Alden B. Dow Archives

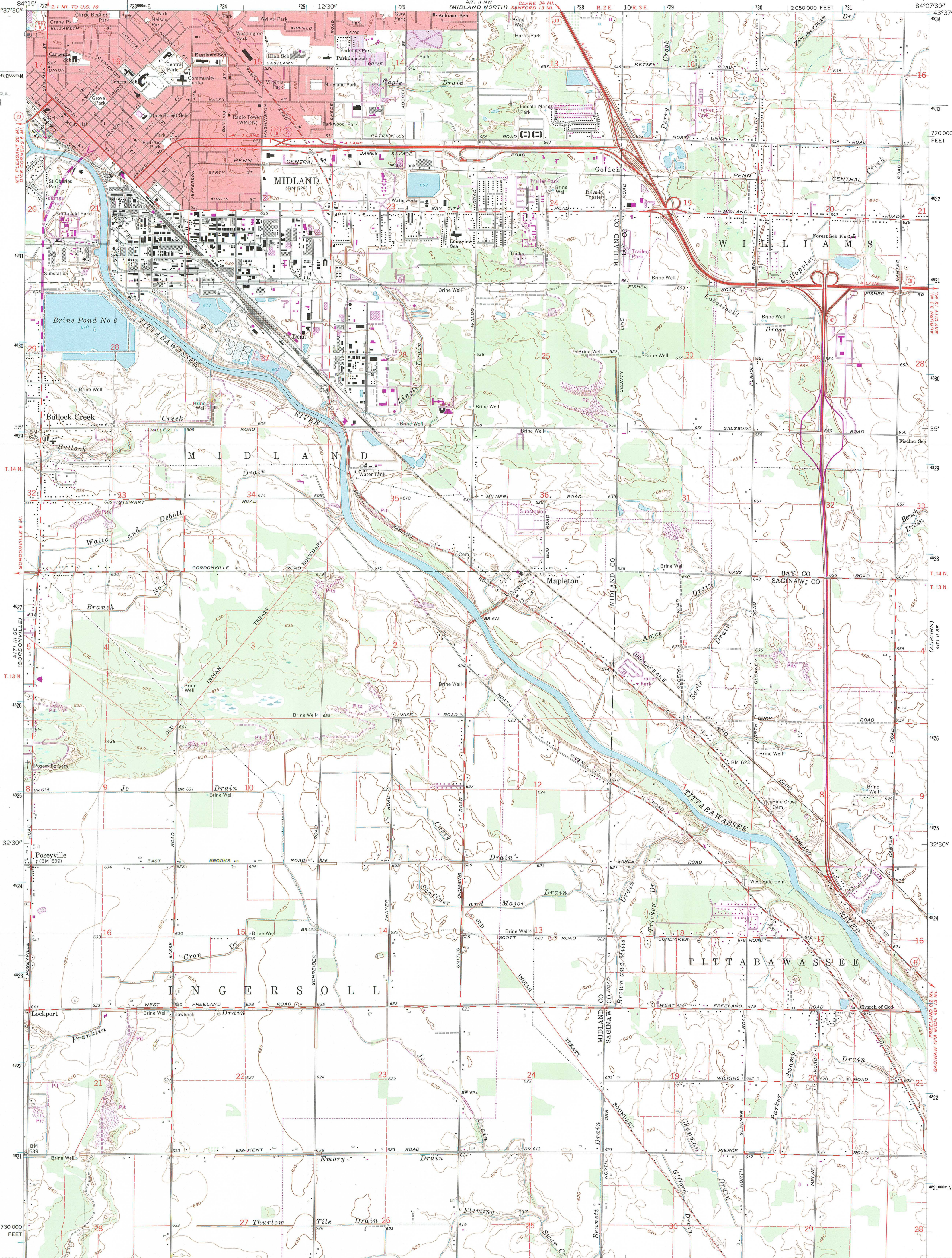
315 Post Street

Midland, MI 48640

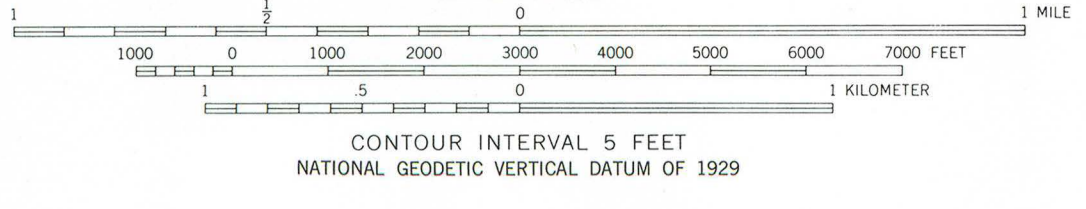
from stairs across foyer to game room

15.

Campbell House
Midland Co., MI
16 721920
4833420



Mapped, edited, and published by the Geological Survey
Control by USGS and USC&GS
Planimetry by photogrammetric methods from aerial photographs
taken 1959. Topography by planetable surveys 1962
Polyconic projection. 1927 North American datum
10,000-foot grid based on Michigan coordinate system, south zone
1000-meter Universal Transverse Mercator grid ticks,
zone 16, shown in blue
To place on the predicted North American Datum 1983
move the projection lines 1 meter north and
3 meters west as shown by dashed corner ticks
Revisions shown in purple compiled from aerial photographs
taken 1973. This information not field checked
Purple tint indicates extension of urban areas



ROAD CLASSIFICATION
Heavy-duty ——— Light-duty ———
Medium-duty ——— Unimproved dirt ———
U.S. Route ——— State Route ———



THIS MAP COMPLIES WITH NATIONAL MAP ACCURACY STANDARDS
FOR SALE BY U. S. GEOLOGICAL SURVEY, RESTON, VIRGINIA 22092
AND BY THE GEOLOGICAL SURVEY DIVISION
MICHIGAN DEPARTMENT OF NATURAL RESOURCES, LANSING, MICHIGAN 48909
A FOLDER DESCRIBING TOPOGRAPHIC MAPS AND SYMBOLS IS AVAILABLE ON REQUEST

MIDLAND SOUTH, MICH.
N4330—W8407.5/7.5
1962
PHOTOREVISED 1973
AMS 4171 II SW—SERIES Y862

