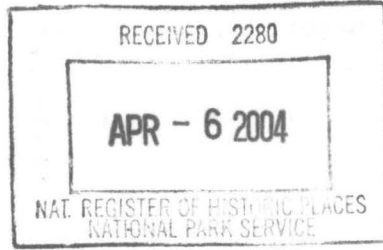


457

United States Department of the Interior
National Park Service



NATIONAL REGISTER OF HISTORIC PLACES
REGISTRATION FORM

This form is for use in nominating or requesting determinations for individual properties and districts. See instructions in How to Complete the National Register of Historic Places Registration Form (National Register Bulletin 16A). Complete each item by marking "x" in the appropriate box or by entering the information requested. If any item does not apply to the property being documented, enter "N/A" for "not applicable." For functions, architectural classification, materials, and areas of significance, enter only categories and subcategories from the instructions. Place additional entries and narrative items on continuation sheets (NPS Form 10-900a). Use a typewriter, word processor, or computer, to complete all items.

1. Name of Property

historic name BOYS' CLUB BUILDING
other names/site number ASSOCIATED BOYS' CLUB BUILDING; BOY SCOUT BUILDING; BOYS' AND GIRLS' BUILDING; W.K. KELLOGG YOUTH BUILDING

2. Location

street & number 115 WEST STREET not for publication
city or town BATTLE CREEK vicinity
state MICHIGAN code 025 county CALHOUN zip code 49017

3. State/Federal Agency Certification

As the designated authority under the National Historic Preservation Act of 1986, as amended, I hereby certify that this nomination request for determination of eligibility meets the documentation standards for registering properties in the National Register of Historic Places and meets the procedural and professional requirements set forth in 36 CFR Part 60. In my opinion, the property meets does not meet the National Register Criteria. I recommend that this property be considered significant nationally statewide locally. (See continuation sheet for additional comments.)

Brian Conway
Signature of certifying official

4/1/04
Date

State or Federal agency and bureau: MI SHPO

In my opinion, the property meets does not meet the National Register criteria. (See continuation sheet for additional comments.)

Signature of commenting or other official _____ Date _____

State or Federal agency and bureau _____

4. National Park Service Certification

I, hereby certify that this property is:

- entered in the National Register
 See continuation sheet.
- determined eligible for the National Register
 See continuation sheet.
- determined not eligible for the National Register
- removed from the National Register
- other (explain): _____

for
Signature of Keeper

Edson H. Beall

Date of Action 5/19/04

5. Classification

Ownership of Property

(Check as many boxes as apply)

- private
 public-local
 public-State
 public-Federal

Category of Property

(Check only one box)

- building(s)
 district
 site
 structure
 object

Number of Resources within Property

(Do not include previously listed resources in the count)

| Contributing | Noncontributing | |
|--------------|-----------------|------------|
| 1 | 0 | buildings |
| 0 | 0 | sites |
| 0 | 0 | structures |
| 0 | 0 | objects |
| 1 | 1 | Total |

Name of related multiple property listing

(Enter "N/A" if property is not part of a multiple property listing.)

N/A

Number of contributing resources previously listed in the National Register

N/A

6. Function or Use

Historic Functions

(Enter categories from instructions)

RECREATION AND CULTURE/sports facility

SOCIAL/civic

Current Functions

(Enter categories from instructions)

VACANT/NOT IN USE

7. Description

Architectural Classification

(Enter categories from instructions)

ART DECO

ELIZABETHAN REVIVAL

Materials

(Enter categories from instructions)

Foundation

STONE

roof

RUBBER

walls

BRICK

other

TERRA COTTA

Narrative Description

(Describe the historic and current condition of the property on one or more continuation sheets.)

**United States Department of the Interior
National Park Service**

**NATIONAL REGISTER OF HISTORIC PLACES
CONTINUATION SHEET**

Section number 7 Page 1

**Boys' Club Building
Calhoun County, MI**

Description

Dedicated in 1928, the Boys' Club Building is a flat-roofed, two-story recreation facility and youth center. The roughly 15,000-square-foot building is constructed with walls of buff-color brick and gray terra cotta trim. It is designed in the Art Deco style, which was widely employed at the time for city halls, county courthouses, and other public buildings throughout the country. The dramatic and highly articulated example here in Battle Creek, however, is unique in Michigan outside of Detroit. Designed by the Grand Rapids (MI) firm of Benjamin & Benjamin, it was constructed by Seirn B. Cole, a local contractor.

The Boys' Club Building occupies a park-like setting at the edge of Battle Creek's downtown. Located two blocks north of the Battle Creek River at the corner of West Street and Garfield Avenue, the building sits on a terraced bluff overlooking the Central High School athletic fields. Historically known as Mykins Hill, this spot was once part of Irving Park, a landscaped 70-acre civic green space at the northern city limits.¹ The property is now surrounded to the north and east by residential neighborhoods, and to the south and west by school property. It currently encompasses approximately 2.42 acres.

The main entrance to the building is located on the front (west) wall. The entrance is elevated, and accessed by a concrete stair. At the base of the stair is a concrete landing, and another stairway that drops down to a sweeping quarter-circular front driveway/parking area. The driveway connects Garfield Avenue and West Street. Under a perpetual easement and right-of-way, this corridor is maintained as a surfaced linear park for pedestrian and cycling users. The front lawn slopes down from the building to the drive, and is contained by a concrete retaining wall. At the rear (east) entrance, an asphalt drive and parking lot were removed in 2003, and a concrete patio was added adjacent to the porch. A seeded lawn and playground equipment were also installed at that time. Several large conifers are located on the rear lawn area.

In 2003, a new three-story apartment building was constructed near the north end of the Boys' Club Building. The new building sits at a slightly lower elevation (near street level). It is sited on

¹ One of several ambitious municipal improvements undertaken in the early 1920s, Irving Park was designed by prominent landscape architect T. Clifton Shepherd. The park featured landscaped lagoons (for winter skating), picnic grounds, tennis facilities, winding footpaths, a greenhouse, and rock gardens. Shepherd also designed the nearby Leila Arboretum, a city park that was subsidized by the widow of C.W. Post.

United States Department of the Interior
National Park Service

**NATIONAL REGISTER OF HISTORIC PLACES
CONTINUATION SHEET**

Section number 7 Page 2

**Boys' Club Building
Calhoun County, MI**

Description (Continued)

an east-west axis, at a diagonal from the old building and parallel to Garfield Avenue. A glass enclosed walkway connects the two structures.

Building exterior

The Boys' Club Building is oriented to the west, and is composed of a nine-bay center façade, with three-bay side wings. The whole sits on a stone-faced masonry foundation with daylight basement. The original building footprint is rectangular with opposing front and rear wings. Later additions (described below) have since produced a more irregular plan. The building façade is strictly symmetrical, with the north and south wings secondary to the projecting center wing. A strong emphasis on this center wing is achieved through the skillful arrangement of parts and textures, and the generous use of abstracted traditional details (some of them vaguely Elizabethan in origin).

The center facade wall is defined by nine stepped pylons, each capped with terra cotta coping. The profile of the pylons is also stepped, creating a restless surface effect and a dramatic, angular roofline contour. Vertical lines are also reinforced on the center facade by nine narrow windows. Anchoring the front wing at ground level is the building's main entrance, a center arched opening with terra cotta surround. Above the doorway is a crenellated terra cotta entablature with multiple shield devices. Stand-off aluminum lettering applied across the entablature reads "YOUTH BUILDING." The lettering was installed ca. 1937 when the facility was officially renamed. The existing (non-historic) exterior metal doors and transom in the front doorway were replaced with comparable new units in 2003.

Flanking the center wing are crenellated side wings that sit on a stone-faced foundation and terra cotta water table. The crenellations are also of terra cotta. Vertical channels beneath the raised merlons reinforce the repeated vertical emphasis. At each corner of the building are stepped piers, with terra cotta coping, and molded shields with heraldic emblems. Window openings on secondary elevations have terra cotta lintels, sills, and architraves, with decorative shields centered above the large windows. The large windows were originally multi-light fixed steel sash with horizontally pivoted four-light sash inserts, but most were removed or partially enclosed over the years. New aluminum replacements were reinstalled in 2003.

Centered on the rear (east) elevation is a one-story porch with open portico. The arched colonnade was enclosed with windows and brick ca. 1949 as part of a larger construction

United States Department of the Interior
National Park Service

**NATIONAL REGISTER OF HISTORIC PLACES
CONTINUATION SHEET**

Section number 7 Page 3

**Boys' Club Building
Calhoun County, MI**

Description (Continued)

project, in which a twenty-eight-by-eighty-six-foot, two-story brick addition was constructed on the back (east) side of the natatorium (north wing) to create additional pool seating (above) and office/utility space (below). The porch was redesigned at that time to bridge the old and new structures, and provide permanent and secure access between the two. Designed by Battle Creek architect Louis Sarvis, the addition blends almost seamlessly with the older structure by using the materials and details of the original. In 2003, the porch windows were reopened, screens were installed, and the original flagstone floor was refinished.

A second major expansion was completed in 2003 with the construction of a freestanding three-story, nine-unit apartment building. The new building is located off the north end of the Boys' Club Building, set back at an angle and slightly behind the historic structure. It is rectangular in plan, and mimics the blocky, rectilinear massing of the older building. The roof is a low-pitched hip. The architects for the project, Urban Resources of Madison (WI), incorporated some elements of the original building into the new design. The exterior wall finish, for instance, is Exterior Insulation Finish System (EIFS), which produces a smooth surface comparable to that found on the side wings of the Boys' Club Building. A stylized version of historic corner piers and pylons is also incorporated into the new design. A two-story glass enclosed walkway connects the buildings, providing shared access to services, but minimizing the visual impact of the addition and clearly differentiating the old design from the new.

Building interior

Functionally, the Youth Building is composed of three major parts: the center mass that originally housed the lobby, lounge, offices (all on the upper level), and locker rooms (basement level); the north wing, occupied by the pool and stadium seating area; and the south wing, where the gymnasium (upper level) and banquet hall (basement level) were located. Over the years, evolving changes in building usage and management resulted in some degree of plan alteration and remodeling, particularly with the onset of municipal stewardship in 1937 and again during World War II when the building was temporarily used for training and office space.

Vacated in 1988, the building was mothballed and over a ten-year period it suffered various problems associated with roof failure. Water penetration caused significant damage to wall, floor and ceiling finishes, and some architectural elements were subject to vandalism. In 2003, an ambitious program of rehabilitation was initiated and the building was converted to thirty-one living units. With this renovation, most of the larger recreational areas were converted to

**United States Department of the Interior
National Park Service**

**NATIONAL REGISTER OF HISTORIC PLACES
CONTINUATION SHEET**

Section number 7 Page 4

**Boys' Club Building
Calhoun County, MI**

Description (Continued)

apartments, and the volume of those spaces was significantly impacted. However, the smaller formal spaces – like the lobby and lounge, where significant original features are concentrated – now function as a common space and community room for tenants, and features within those rooms have been repaired or replaced in-kind as needed. This includes a number of fine period details that are characteristic of the Tudor Revival style: flat Tudor-arched doorway openings; wood corbelling in stairway openings; half-timbered wall and ceiling treatments; and decorative tile floors and wall inlay. Other interior elements of note include the stair balustrade near the front lobby that displays Tudor-inspired shields and tracery, and the lounge fireplace with herringbone brick chimney back beneath a large terra cotta shield.

Redesign of the larger, more utilitarian spaces in the building was more challenging. To maximize available space, an additional floor was added above the gymnasium for residential apartments. Original glazed brick on the outside gym walls was retained in the first-floor apartments and hallways, and enclosed window openings were reopened throughout for installation of new aluminum windows that mimic the historic steel sash configuration.

The natatorium (in the north wing) also became a two-level space with loft apartments. As in the gym, original glazed brick on the outside walls of the room has been retained, and the tile lining the pool is incorporated directly into the finished room design. The pool mezzanine – including metal railing, support rods, and decorative brackets – was retained for upper-level access and circulation.

In the banquet room (south wing at lower level), window trim and mock ceiling beams that enclose structural steel roof beams are preserved within the new two-bedroom apartments. Other functional spaces such as second-floor exercise/craft rooms and basement changing rooms (now apartments) are generally unadorned and have standard contemporary finishes. However, glazed brick walls and terrazzo floors in the first-floor rear addition (1949) are preserved in the new living units there.

8. Statement of Significance

Applicable National Register Criteria

(Mark "x" in one or more boxes for the criteria qualifying the property for National Register listing)

- A** Property is associated with events that have made a significant contribution to the broad patterns of our history.
- B** Property is associated with the lives of persons significant in our past.
- C** Property embodies the distinctive characteristics of a type, period, or method of construction or represents the work of a master, or possesses high artistic values, or represents a significant and distinguishable entity whose components lack individual distinction.
- D** Property has yielded, or is likely to yield information important in prehistory or history.

Criteria Considerations

(Mark "X" in all the boxes that apply.)

Property is:

- A** owned by a religious institution or used for religious purposes.
- B** removed from its original location.
- C** a birthplace or a grave.
- D** a cemetery.
- E** a reconstructed building, object, or structure.
- F** a commemorative property.
- G** less than 50 years of age or achieved significance within the past 50 years.

Narrative Statement of Significance

(Explain the significance of the property on one or more continuation sheets.)

9. Major Bibliographical References

Bibliography

(Cite the books, articles, and other sources used in preparing this form on one or more continuation sheets.)

Previous documentation on file (NPS)

- preliminary determination of individual listing (36 CFR 67) has been requested.
- previously listed in the National Register
- previously determined eligible by the National Register
- designated a National Historic Landmark
- recorded by Historic American Buildings Survey

- recorded by Historic American Engineering Record

Areas of Significance

(Enter categories from instructions)

SOCIAL HISTORY

ARCHITECTURE

Period of Significance

1928 - 1953

Significant Dates

1928

1949

1950

Significant Person

(Complete if Criterion B is marked above)

WILL KEITH KELLOGG

Cultural Affiliation

N/A

Architect/Builder

BENJAMIN & BENJAMIN

Primary location of additional data

- State Historic Preservation Office
- Other State agency
- Federal agency
- Local government
- University
- Other

Name of repository:

Willard Public Library; Heritage Battle Creek Research Center

United States Department of the Interior
National Park Service

**NATIONAL REGISTER OF HISTORIC PLACES
CONTINUATION SHEET**

Section number 8 Page 5

**Boys' Club Building
Calhoun County, MI**

Statement of Significance

The Boys' Club Building – more commonly known as the Youth Building – is a direct product of local civic philanthropy provided by early twentieth-century consumer products pioneer W.K. Kellogg. The first gift of Kellogg's Fellowship Corporation to the citizens of Battle Creek, the building was the focal point for municipal youth and recreation programs for over sixty years, and it played an important role in Depression-era social welfare programs and the World War II home front defense effort. For its historic function and its association with this nationally recognized business leader and community benefactor, the Boys' Club Building meets national register Criteria A and B. It also meets Criterion C as an unusual interpretation of the Art Deco style and a unique example of the work of Benjamin & Benjamin, a prominent Grand Rapids firm.

Historical background and significance:

The confluence of the Battle Creek and Kalamazoo rivers was an early first destination for settlers in south-central Michigan, where waterways were a chief avenue of transport throughout the eighteenth century. In Battle Creek, located at the confluence, these rivers were also essential to the commercial and industrial development of the city, which was settled in 1831. Entrepreneur Sands McCamly built a millrace between the two rivers in 1835, and was soon able to provide "a goodly amount of machinery with water power."² Powered by the abundant local water power, mills sprung up throughout the town, producing woolen goods, flour, and wood supplies.

Access to outside markets was an important factor in Battle Creek's growing economy. Located on the Territorial Road, an important early thoroughfare connecting Detroit and Lake Michigan, the village was a natural stopping point for travelers, as well as a market center for trade goods.³

It was the coming of the railroad, however, that effectively elevated the city "from a parochial mill town into an industrial city with markets all over the world."⁴ The first railroad built through town was the Michigan Central Railroad, which was completed in 1845. The opening of a competing line in 1873 – the Chicago and Lake Huron (later the Grand Trunk) – led to lower

² Battle Creek Sesquicentennial Committee. Battle Creek Sesquicentennial: 1831-1981 (Battle Creek: Embossing Printers, 1980), p. 6.

³ Authorized by the Territorial government in 1829, the road started in Plymouth at the Chicago Road (now US 12) and proceeded west across the state to Lake Michigan. Between 1830-37, it was a major route for western migration.

⁴ Sesquicentennial, p. 58.

United States Department of the Interior
National Park Service

**NATIONAL REGISTER OF HISTORIC PLACES
CONTINUATION SHEET**

Section number 8 Page 6

**Boys' Club Building
Calhoun County, MI**

Statement of Significance (Continued)

freight rates and increased trade, and by the end of the century the city had become an important agricultural machinery manufacturing center, producing approximately ten percent of the nation's threshing machines and tractors, in addition to steam pumps, printing presses, organs, and pianos.⁵ Incorporated a village in 1850, Battle Creek was designated a city in 1859.

The area was likewise the destination for several free-thinking sects, and early churches in the area became gathering places for people sharing antislavery, temperance, and other social beliefs. In 1844, Quakers and Spiritualists established a small cooperative settlement on the western outskirts of Battle Creek.⁶ In the 1850s, this community provided safe haven to fugitive slaves, and was temporarily home to the former slave, feminist and abolitionist Sojourner Truth.⁷

Also in the late 1850s, the Seventh-Day Adventist Church established its national and international headquarters in Battle Creek. In 1866, its founders opened the Western Health Reform Institute, a hydropathic and dietary cure facility. The Institute was taken over and reorganized as the Battle Creek Sanitarium by Dr. John Harvey Kellogg in 1876. Until 1903, the Adventist headquarters and associated publishing business remained in the city. The Sanitarium passed out of church control in 1907, but stayed in operation until the 1940s under Dr. Kellogg.⁸ The health and dietary principles promoted at this facility formed the basis of a second industrial boom which revolutionized Battle Creek and established it as America's "Cereal City."

Guided by the precepts of the Adventist church, Dr. Kellogg developed a series of treatments for patients at the Sanitarium that included hydrotherapy, exercise, and a diet that strictly prohibited alcohol, caffeine, tobacco and meat. With his younger brother, Will Keith (W.K.) Kellogg, he developed several grain-based food products for use at the facility, and in 1894 introduced Granos, the first flaked breakfast cereal. These products were manufactured by the Sanitas Nut Food Company in a building adjoining the Sanitarium, which was managed by W.K. Kellogg until 1900. Following a fire, the Sanitas factory was rebuilt one block north of its original location in 1901, where it continued production under a variety of names, including the Sanitarium Health Food Company, the Battle Creek Food Company, and the Kellogg Food Company.

⁵ Ibid., p. 8.

⁶ Originally known as Harmonia Village, it is now part of the Fort Custer site.

⁷ In 1867, Sojourner Truth purchased a home in Battle Creek on College Street, where she lived with her children until her death in 1883. The home was demolished in 1915.

⁸ Located three blocks west of the Boys' Club Building, the Sanitarium was converted in 1954 to a Federal office complex.

United States Department of the Interior
National Park Service

**NATIONAL REGISTER OF HISTORIC PLACES
CONTINUATION SHEET**

Section number 8 Page 7

**Boys' Club Building
Calhoun County, MI**

Statement of Significance (Continued)

At the age of forty-six, W.K. Kellogg left the Sanitarium operation and in 1906 established the Battle Creek Toasted Corn Flake Company. Using his knowledge of flaked cereals – until this time limited to wheat products – W.K. began the manufacture of Toasted Corn Flakes in a small plant on Bartlett Street. Taking an advertisement in the *Ladies Home Journal*, Kellogg was able to increase his production from thirty-five to 2,000 cases per day within months.⁹ An aggressive advertising and promotion campaign continued to enhance the company's growth. Reorganized as the Kellogg Company, the firm saw its business boom, and by the late 1920s it was "producing Corn Flakes, All-Bran, Pep, Krumbles, Bran Flakes, New Oats and Rolled and Redi-Cooked Oats in a plant with 30 acres of floor space, 2,000 employees, and an annual payroll of \$2.5 million."¹⁰

Between 1900 and 1915, over eighty cereal companies operated in the Battle Creek area, with varying degrees of long-term success.¹¹ One early leader in the industry was C.W. Post, a salesman from Illinois and former Sanitarium patient, who developed a cereal coffee in 1894 that he named Postum. In 1895, Post began the first large-scale commercial production of cereal in Battle Creek, with Elijah's Manna (later known as Post Toasties) and Grape Nuts among its most important early products. Another manufacturer established at this time was the Mapl-Flake Company, which was purchased in 1917 by the Armour Grain Company of Chicago and was later absorbed by the Ralston-Purina Company. While most of the early cereal companies failed, both Ralston-Purina and Post still have large plants and grain elevators in Battle Creek, and Kellogg's remains the city's largest employer and a strong civic influence.

The growth of Battle Creek's cereal industry was part of the prosperity experienced by the nation as a whole during this post-war decade, when the city's population nearly doubled. As the Kellogg Company prospered in the first decades of the twentieth century, however, W.K. Kellogg became acutely aware that the prosperity of the times was not benefiting all of Battle Creek's residents, and that there was a particular need to offer activities and opportunities to the city's youth. To answer this need, Kellogg anonymously donated \$150,000 in 1926 to the City of Battle Creek to erect and equip a clubhouse for boys in Irving Park. In November 14, the City officially accepted the gift, with the understanding that "it shall not be identified with any national

⁹ "W.K. Kellogg: Famous, Wealthy, Reluctant Baron," *Battle Creek Enquirer and News*, 3 June 1979.

¹⁰ "Kellogg Had Grim Mask, Soft Heart," *Battle Creek Enquirer and News*, 6 June 1979.

¹¹ Sesquicentennial, p. 25.

United States Department of the Interior
National Park Service

**NATIONAL REGISTER OF HISTORIC PLACES
CONTINUATION SHEET**

Section number 8 Page 8

**Boys' Club Building
Calhoun County, MI**

Statement of Significance (Continued)

organization holding any religious affiliations or ceremonials and that religion shall not in any way affect or prejudice either officers or members."¹²

To oversee the construction, maintenance, and management of the facility, two local foundations were enlisted on behalf of the donor: the Fellowship Corporation and the Battle Creek Foundation. The Fellowship Corporation was created by W.K. Kellogg in 1925 to anonymously channel his personal philanthropies, supporting projects that answered Battle Creek's most pressing needs. In 1931, the corporation was reorganized as the Child Welfare Foundation, and then as the W.K. Kellogg Foundation, ultimately contributing over \$831,000 to local hospital, church, and school projects. The Battle Creek Foundation was established in 1926 to provide "a perpetual fund for civic improvement," and its first public activity was management of the Boys' Club Building.¹³ Working together on this project, the overarching goal of the two organizations was to bring "the greatest good to the greatest number."¹⁴ Kellogg's first major philanthropic effort for Battle Creek, the Youth Building has commonly been referred to as his "First Gift." Other public buildings later constructed with his support included the Ann J. Kellogg School in Hickory Corners (1930), and the Kellogg High School (1933) and Kellogg Auditorium (1936) in Battle Creek.

In February 1928, the Boy Scouts of Battle Creek accepted the gift of the building and a \$150,000 maintenance endowment, and W.K. Kellogg was publicly acknowledged as the donor behind the project. The building was dedicated at a public ceremony on June 14 of that year. Identified as the "Associated Boys Club" on architectural plans, the building was never generally recognized by that name; instead, it was known as the Boys' Club Building, the Boy Scout Building, and then as the Boys' and Girls' Building, when the facilities were subsequently opened to girls and women. When operations were transferred again to the city's Civic Recreation Association in 1937, the building's name was finally changed to the W.K. Kellogg Youth Building. Thereafter, it was known more commonly as the Youth Building.

The Boys' Club Building was designed by the prominent Grand Rapids building and architectural firm of Benjamin & Benjamin. Thomas and Adrian (father and son) were only in business as

¹² "Boys' Club Promises to Fill a Long Felt Want," *The Enquirer and Evening News* (Battle Creek), 1 January 1927.

¹³ Mary Butler, "Castle on the Hill," *Heritage Battle Creek*, Spring 1994, p. 10.

¹⁴ Burrirt Hamilton. Speech presented on behalf of the Battle Creek Foundation at the dedication of Boys' Club Building on 14 June 1928 (from the collection of the Willard Public Library).

United States Department of the Interior
National Park Service

**NATIONAL REGISTER OF HISTORIC PLACES
CONTINUATION SHEET**

Section number 8 Page 9

**Boys' Club Building
Calhoun County, MI**

Statement of Significance (Continued)

Benjamin & Benjamin between 1925 and 1928, but had previously worked together under the firm name of T. Benjamin & Son (1903-18), and Benjamin, Robinson & Benjamin (1921-24).¹⁵ The son of Dutch immigrants, Thomas Benjamin began his career as a furniture maker, but by 1889 had started working as a carpenter and builder. In 1903 he was joined in this endeavor by his son, a graduate of the U.S. Naval Academy. An innovative full-service team, the Benjamins published from 1906 to 1908 a magazine entitled *Homes*, a vehicle through which they illustrated style trends and showcased their own designs. They worked together as Benjamin & McLaughlin until the senior partner's retirement in 1934.

As Benjamin & Benjamin they designed a number of commercial, educational and public buildings and residences in western Michigan. They also "arranged for construction financing, oversaw construction, sold homeowners' insurance and real estate, and even developed real estate" as part of their business.¹⁶ Their specialty, however, was designing and building homes.

Commissions in Grand Rapids, which eventually encompassed designs for over 150 houses, include the Baxter Brothers Building and Van Stensel & Timmer Store (both 1925), East Grand Rapids School (1926, never built), Holtman House (1926), Otte House and Hekman House (both 1927), Apted House and Kloote House (both erected 1929). Other Michigan commissions include the Labor Temple and Burns & Kerr Store in Niles (1928), the Cedar Lake Academy in Cedar Lake (1928), and the Otto Seyferth House, George Cannon House and Lawrence Gordon House in Muskegon (1928).¹⁷

Battle Creek buildings designed by Benjamin & Benjamin include the Kellogg Hospital (1926), the Fish OK Laundry on Hamblin Avenue (1925), and the Seventh Day Baptist Church at Emmet and North Washington streets (1928).¹⁸ As Seventh Day Adventists, the Benjamins designed a church for that denomination on Cass Road SE in Grand Rapids (razed) that led to other Seventh Day Adventist commissions in Washington (DC), Pennsylvania and Florida. It is possible that the Benjamins were introduced to W.K Kellogg through their church membership. In choosing a firm to design his boys' club, Kellogg was familiar with their talents, as he had also

¹⁵ Richard Harms, unpublished history of Benjamin & Benjamin with catalogue of commissions, n.p.

¹⁶ Richard Harms, "Hedging Their Bets: Combining Art and Business," *Grand Rapids Magazine*, July 1993, p. 71.

¹⁷ Harms, unpublished history.

¹⁸ The church was dedicated to Ella Eaton Kellogg, the wife of Dr. J.H. Kellogg, an early church member.

**United States Department of the Interior
National Park Service**

**NATIONAL REGISTER OF HISTORIC PLACES
CONTINUATION SHEET**

Section number 8 Page 10

**Boys' Club Building
Calhoun County, MI**

Statement of Significance (Continued)

commissioned them to remodel the Kellogg Company headquarters and to design his estate at nearby Gull Lake (1925-27).¹⁹

The Boys' Club Building was designed to be a comprehensive recreational facility. As originally constructed, it contained a seventy-five-by-twenty-foot natatorium (swimming pool), a sixty-by-eighty-foot gymnasium with gallery seating for 300, a banquet room, fully-equipped kitchen, locker room and showers, a large lounge/assembly room, and numerous small club rooms. Within a month of opening, girls were also invited to use the facilities, and for the next nine years the Boy Scouts shared the clubhouse with other youth groups in the community.

In an effort to broaden its outreach to underprivileged children, the Battle Creek Foundation turned over use of the building to Battle Creek's Civic Recreation Association in 1937. For the first time, the building was opened to the general public as a recreation center. Under the new arrangement, the association was charged with developing and delivering programs at the Boys' Club Building, and the foundation continued to furnish operating and maintenance funds. While the building continued to serve as headquarters for Scout activities, the pool and gymnasium were used by the high school for physical education classes during the day, and the addition of game room equipment, hobby shops, and additional showers and lockers soon boosted attendance figures to over 16,000 per month by the summer of 1938.²⁰

While the building's role grew to serve individuals and groups from outside Battle Creek, its focus remained largely local. The gymnasium hosted basketball teams from Battle Creek junior and senior high schools as well as other league and city games, including regular season and championship tournaments. The lounge was used for meetings as well as orchestra and chorus rehearsals, while the offices and club rooms housed other groups and agencies, such as Camp Fire Girls and the Work Progress Administration (WPA).²¹ In 1939, the building was officially registered with the American Youth Hostels, Inc. as part of that national chain, and for a brief time in the early 1940s it provided rehearsal space for a Michigan WPA Music Project orchestra. In 1942 a "war-time recreation program" was introduced at the Boys' Club Building to address the recreation needs of Battle Creek's citizens and soldiers, with a wide range of indoor activities

¹⁹ Built in 1925-27, the manor house and estate were donated to Michigan State University in 1952 and are now part of the W.K. Kellogg Biological Station.

²⁰ Butler, p. 7.

²¹ Ibid.

United States Department of the Interior
National Park Service

**NATIONAL REGISTER OF HISTORIC PLACES
CONTINUATION SHEET**

Section number 8 Page 11

**Boys' Club Building
Calhoun County, MI**

Statement of Significance (Continued)

and special hours specifically offered to women employed in the war effort.²² The building also provided classrooms and lecture space for training students with the U.S. Cadet Nurse Corps.

After the war, the Boys' Club Building continued to see intensive community involvement. In 1949 the Battle Creek Foundation spent over \$130,000 in improvements to the building that "resulted in enlarging the swimming pool section to provide seating facilities for 1,100 spectators" as well as "additional space for offices, handicraft shops, shower and locker rooms and lobby space."²³ The building interior was completely redecorated, and heating and air conditioning systems were also improved at that time. During the following season approximately 300,000 people made use of the Youth Building facilities, including the Battle Creek Civic Art Center, which offered adult and children's classes in refurbished facilities in the upper gymnasium.²⁴

In 1950, the Kellogg Foundation finally transferred ownership of the Boys' Club Building to the City of Battle Creek. With the transfer, the city assumed the annual operating costs of between \$12,000 to \$14,000 and committed itself to maintaining the building as the core of its nationally recognized recreational program. As part of this effort, and under the leadership of City Recreation Director Arch Flannery (until his retirement in 1960), the facility's programs were again redirected towards serving children and youth, in keeping with the foundation's original vision. The Boys' Club Building continued to serve the community until 1988, when the City Department of Recreation, Parks and Buildings moved its offices from the building and mothballed the structure as requiring repairs too expensive to justify. Vacant since that time, the building was renovated for residential use in 2003.

²² Ibid., p. 10.

²³ "Site is Center for Recreation," *Battle Creek Enquirer and News*, 14 January 1950.

²⁴ Ibid.

United States Department of the Interior
National Park Service

**NATIONAL REGISTER OF HISTORIC PLACES
CONTINUATION SHEET**

Section number 9 Page 12

**Boys' Club Building
Calhoun County, MI**

Bibliography

"Award Contracts for Boys Club Structure Here." *Battle Creek Enquirer and Evening News*, 20 November 1926.

Battle Creek Historic District Commission. Historic walking/driving tour brochures (assorted).

Battle Creek Sesquicentennial Committee. Battle Creek Sesquicentennial: 1831-1981. Battle Creek: Embossing Printers Inc., 1980.

"Boys Building Now Rising Above Site." *Battle Creek Enquirer and Evening News*, 17 July 1927.

"Boys' Club Promises to Fill a Long Felt Want." *Battle Creek Enquirer and Evening News*, 1 January 1927.

"Boys, Girls Club Renamed by City." *Battle Creek Enquirer and Evening News*, 30 September 1937.

Butler, Mary. "Castle on the Hill." *Heritage Battle Creek: A Journal of Local History*. Spring 1994, pp. 4-10

"City Given Use of Club Building." *Battle Creek Enquirer and Evening News*, 5 July 1928.

City of Battle Creek, City Clerk's Office. Building permit files.

"Death Takes Ex-Builder" (Thomas Benjamin Obituary). *Grand Rapids Press*, 11 November 1950.

Eckert, Kathryn Bishop. Buildings of Michigan. New York: Oxford University Press, 1993.

Hamilton, Burritt. Speech presented on behalf of the Battle Creek Foundation at the dedication of Boys Club Building on 14 June 1928 (from the collection of the Willard Public Library).

Harms, Richard. "Hedging their Bets: Combining Art and Business." *Grand Rapids Magazine*. July 1993, p. 71.

United States Department of the Interior
National Park Service

**NATIONAL REGISTER OF HISTORIC PLACES
CONTINUATION SHEET**

Section number 9 Page 13

**Boys' Club Building
Calhoun County, MI**

Bibliography (Continued)

_____. Unpublished history of Benjamin & Benjamin and catalogue of commissions (collection of author).

"Hostelers to be Accommodated in Youth Building this Summer." *Battle Creek Enquirer and Evening News*, 5 May 1939.

"Kellogg Had Grim Mask, Soft Heart." *Battle Creek Enquirer and News*, 6 June 1979.

Polk, J.R. Battle Creek City Directory. Detroit: J.R. Polk & Company, 1947.

"Present Club to Boy Scouts." *Battle Creek Moon Journal*, 15 June 1928.

Quaife, M.M. and Sidney Glazer. Michigan: From Primitive Wilderness to Industrial Commonwealth. New York: Prentice-Hall, Inc., 1948.

Sanborn Fire Insurance Map, Battle Creek, Michigan. New York: Sanborn Map Company, 1919.

"Scouts Now Have Their New Home." *Battle Creek Enquirer and Evening News*, 15 June 1928.

"Soldier, Architect Dies at 85" (Adrian Benjamin Obituary). *Grand Rapids Press*, 29 May 1967.

"Swing with Sax Instead of Pick." *Battle Creek Enquirer and Evening News*, 26 February 1940.

United States Department of Agriculture. *Soil Survey of Calhoun County, Michigan*, Washington, DC: Government Printing Office, 1997.

"W.K. Kellogg: Famous, Wealthy, Reluctant Baron" (week-long series). *Battle Creek Enquirer and News*, 3-9 June 1979.

Willard Library, Local History Collection. Miscellaneous photographs and ephemera.

"Youth Building Given to City by Foundation." *Battle Creek Enquirer and News*, 15 January 1950.

"Youth Building Work Bid Advertising OK'd." *Battle Creek Enquirer and News*, 30 August 1957.

**United States Department of the Interior
National Park Service**

**NATIONAL REGISTER OF HISTORIC PLACES
CONTINUATION SHEET**

Section number Additional Documentation Page 14

**Boys' Club Building
Calhoun County, MI**

Verbal Boundary Description

All of Lots 46 through 53, and part of Lots 39 through 45, in Chas. & R.B. Merritt's Addition to Battle Creek, and portions of vacated Tompkins and Spruce streets. Beginning at northeast corner of Lot 48, thence north $87^{\circ}52'00''$ west along southerly line of Garfield Avenue 335.90 feet, thence south $02^{\circ}43'37''$ east 77.43 feet, thence southeast along arc to right 225.06 feet, thence southeast along arc to left 182 feet, thence south $70^{\circ}56'19''$ 25.02 feet, thence south $88^{\circ}15'00''$ east 90.61 feet, thence north $02^{\circ}10'00''$ west along west line of West Street 385.95 feet to point of beginning, subject to easement of record.

Boundary Justification

The nominated property includes the entire parcel historically associated with the W.K. Kellogg Youth Building.

**United States Department of the Interior
National Park Service**

**NATIONAL REGISTER OF HISTORIC PLACES
CONTINUATION SHEET**

Section number Additional Documentation Page 16

**Boys' Club Building
Calhoun County, MI**

Photographs

The name and location of the property, name of the photographer, and date of photographs is the same for the first ten views (depicting the condition of the building prior to rehabilitation), and is therefore listed only once.

1. Name: Boys' Club Building
Location of property: 115 West Street, Battle Creek, Calhoun County, Michigan
Photographer: Daniel Hershberger
Date: August 2001
Location of negatives: Michigan Historical Center
View: Exterior view of front and side elevations, looking northeast from the C.W. Post (Central High School) Athletic Field.
2. View: Exterior view of primary entrance on west elevation, showing crenellation and center projecting bay.
3. View: Looking northwest across the rear elevation, showing enclosed one-story portico. The 1949 addition is located on the far right.
4. View: Interior view of front lobby, looking south to stairwell and front entry. Note the Tudor-arched openings, original double doors and multi-light transom.
5. View: Interior view of lobby, looking northeast towards enclosed office area, showing original wood trim and decorative tiles in plaster walls.
6. View: Interior view of stairwell, looking southeast towards gymnasium entrance. Note corbelled wood arch in upper left corner, metal hopper windows on stairway landing, and decorative metal railing.
7. View: Interior view of lounge, looking northeast towards raised stone fireplace.
8. View: Interior view of pool, looking south. The 1949 addition on the left expanded to accommodate stadium seating.
9. View: Interior view of gymnasium, looking northwest. Lower wall finish is glazed orange brick. Note decorative half-timbering on far wall.
10. View: Interior view of banquet room in basement, looking southeast. Note half-timbered ceiling treatment, original wood trim, and metal sash hopper windows.

**United States Department of the Interior
National Park Service**

**NATIONAL REGISTER OF HISTORIC PLACES
CONTINUATION SHEET**

Section number Additional Documentation Page 17

**Boys' Club Building
Calhoun County, MI**

Photographs (Continued)

The name and location of the property (depicting the condition of the building after rehabilitation), name of the photographer, and date of photographs is the same for the remaining views, and is therefore listed only once.

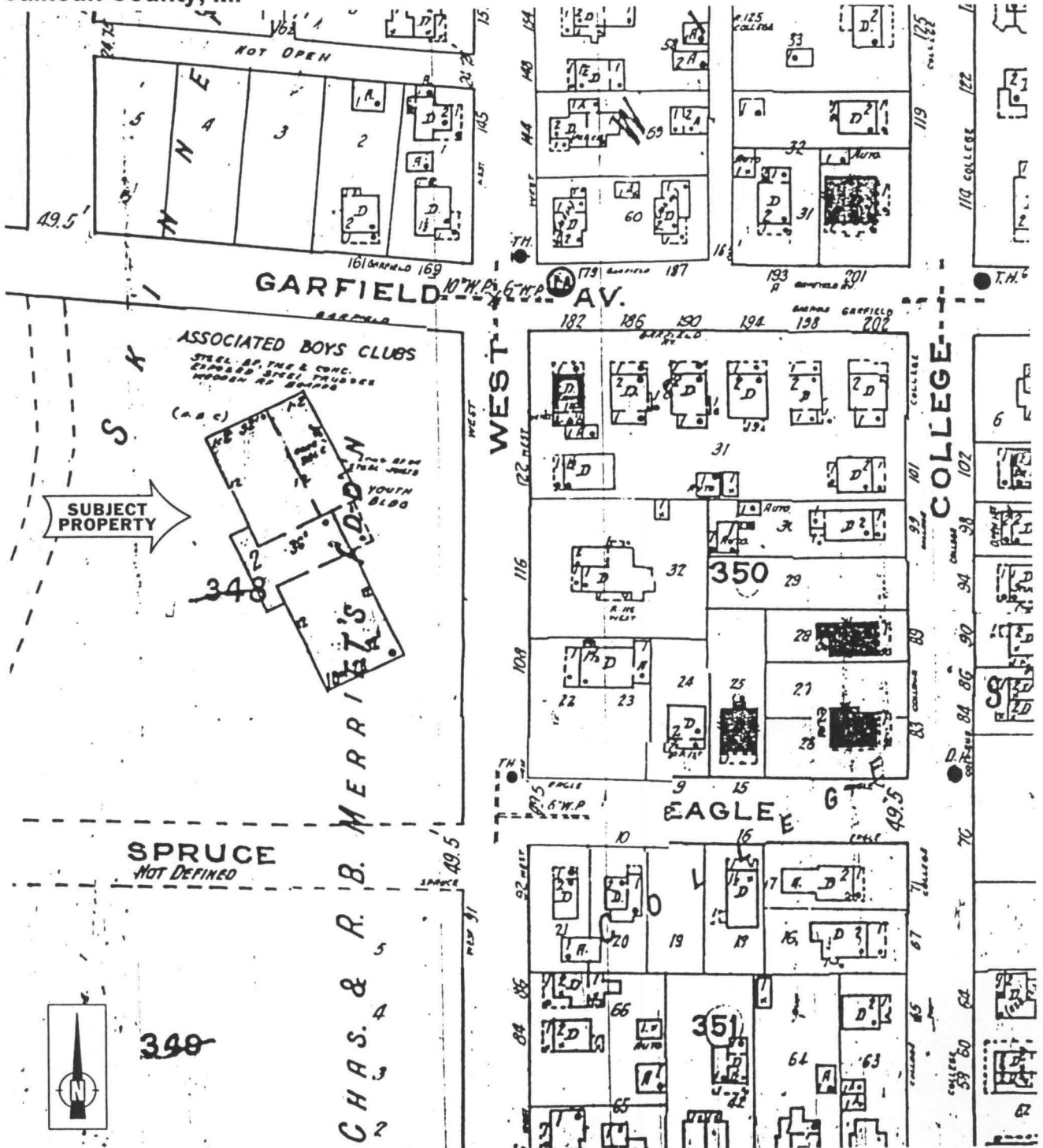
11. Name: Boys' Club Building
Location of property: 115 West Street, Battle Creek, Calhoun County, Michigan
Photographer: Maura Johnson
Date: February 2004
Location of negatives: Michigan Historical Center
View: Looking northeast across the C.W. Post (Central High School) Athletic Field, showing front (west) and side (south) elevations. Note the elevated building site and three-story addition on left (constructed in 2003).
12. View: Exterior view of building facade, looking southeast and showing new doors and windows. On the left is a glass walkway that connects to the side addition.
13. View: Looking north across building facade, showing relationship of historic building and side addition.
14. View: Exterior view of primary entrance on front (west) elevation, showing crenellation and center projecting bay.
15. View: Looking northwest across rear (east) elevation. With the 2003 rehabilitation, windows have been reinstalled and the one-story portico reopened. The new three-story addition is visible on far right.
16. View: Looking south across rear (east) elevation at juncture with new addition.
17. View: Interior view of lobby, looking south to stairwell and front entry. The stairwell was enclosed in 2003 to meet fire code, but the arched ceiling and exterior doors were reinstalled and historic tile flooring retained.
18. View: Interior view of lobby, looking northeast towards enclosed office area.
19. View: Interior view of stairwell, looking southeast towards former gymnasium entrance (now apartment corridor). Note corbelled wood arch, decorative cresting on metal rail, and original tile flooring.

United States Department of the Interior
National Park Service

NATIONAL REGISTER OF HISTORIC PLACES CONTINUATION SHEET

Section number _____ Additional Documentation _____ Page 17

Boys' Club Building
Calhoun County, MI



COVER

NATIONAL REGISTER OF HISTORIC PLACES
EVALUATION/RETURN SHEET

Petoskey MRA
Emmet County
MICHIGAN

Substantive Review

Working No. JUL 31 1986
Fed. Reg. Date: 2/3/87
Date Due: 9/28/86 - 9/14/86
Action: ACCEPT 9-10-86
 RETURN
 REJECT

- resubmission
- nomination by person or local government
- owner objection
- appeal

Federal Agency: _____

Substantive Review: sample request appeal NR decision

Reviewer's comments:

Cover form is well-prepared - it does a good job explaining the development and significance of this small, prosperous community whose growth in the 19th and early 20th centuries was tied to Great Lakes tourism, and development of local forestry products. Form

Recom./Criteria Accept A & C
Reviewer Kathink Andrus
Discipline Historian
Date 9/10/86
 see continuation sheet

Nomination returned for: technical corrections cited below *does good job in explaining how the various types of*
 substantive reasons discussed below *resources nominated reflect the town's significance.*

1. Name _____

2. Location _____

3. Classification _____

| Category | Ownership | Status | Present Use |
|----------|--------------------|------------|-------------|
| | Public Acquisition | Accessible | |

4. Owner of Property _____

5. Location of Legal Description _____

6. Representation in Existing Surveys

Has this property been determined eligible? yes no

7. Description

- | | | | |
|--|---|--|---|
| Condition <input type="checkbox"/> excellent <input type="checkbox"/> good <input type="checkbox"/> fair | <input type="checkbox"/> deteriorated <input type="checkbox"/> ruins <input type="checkbox"/> unexposed | Check one <input type="checkbox"/> unaltered <input type="checkbox"/> altered | Check one <input type="checkbox"/> original site <input type="checkbox"/> moved date _____ |
|--|---|--|---|

Describe the present and original (if known) physical appearance

- summary paragraph
- completeness
- clarity
- alterations/integrity
- dates
- boundary selection

8. Significance

Period _____ Areas of Significance—Check and justify below

Specific dates _____ Builder/Architect _____
Statement of Significance (*in one paragraph*)

- summary paragraph
- completeness
- clarity
- applicable criteria
- justification of areas checked
- relating significance to the resource
- context
- relationship of integrity to significance
- justification of exception
- other

9. Major Bibliographical References

10. Geographical Data

Acreage of nominated property _____

Quadrangle name _____

UTM References _____

Verbal boundary description and justification _____

11. Form Prepared By

12. State Historic Preservation Officer Certification

The evaluated significance of this property within the state is:

____ national ____ state ____ local

State Historic Preservation Officer signature _____

title _____ date _____

13. Other

- Maps
- Photographs
- Other

Questions concerning this nomination may be directed to _____

Signed _____ Date _____ Phone: _____

UNITED STATES DEPARTMENT OF THE INTERIOR
NATIONAL PARK SERVICE

NATIONAL REGISTER OF HISTORIC PLACES
EVALUATION/RETURN SHEET

REQUESTED ACTION: NOMINATION

PROPERTY Boys' Club Building
NAME:

MULTIPLE
NAME:

STATE & COUNTY: MICHIGAN, Calhoun

DATE RECEIVED: 4/06/04 DATE OF PENDING LIST: 4/21/04
DATE OF 16TH DAY: 5/06/04 DATE OF 45TH DAY: 5/20/04
DATE OF WEEKLY LIST:

REFERENCE NUMBER: 04000457

REASONS FOR REVIEW:

APPEAL: N DATA PROBLEM: N LANDSCAPE: N LESS THAN 50 YEARS: N
OTHER: N PDIL: N PERIOD: N PROGRAM UNAPPROVED: N
REQUEST: N SAMPLE: N SLR DRAFT: N NATIONAL: N

COMMENT WAIVER: N

ACCEPT RETURN REJECT 5/19/04 DATE

ABSTRACT/SUMMARY COMMENTS:

Entered in the
National Register

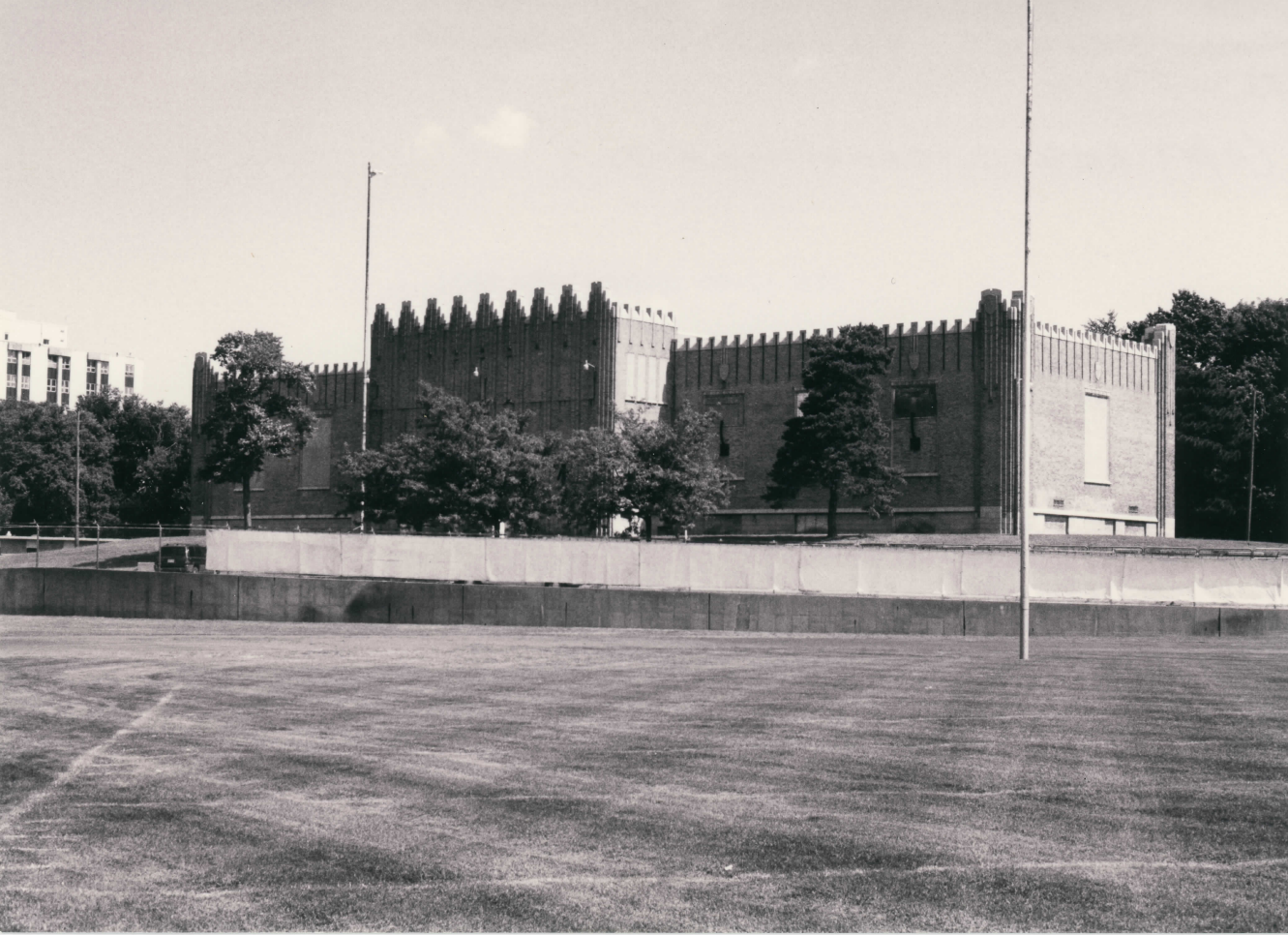
RECOM./CRITERIA _____

REVIEWER _____ DISCIPLINE _____

TELEPHONE _____ DATE _____

DOCUMENTATION see attached comments Y/N see attached SLR Y/N

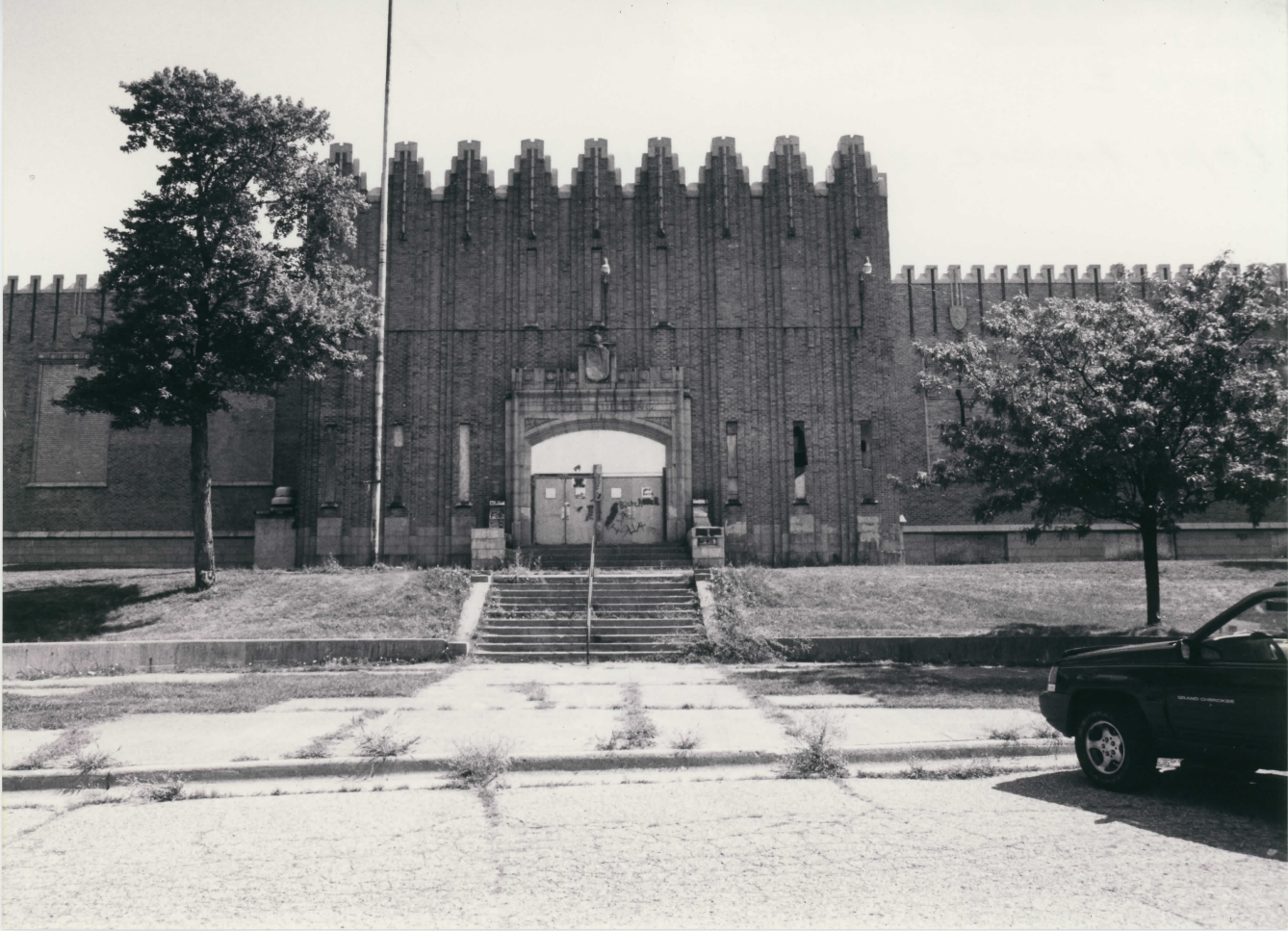
If a nomination is returned to the nominating authority, the nomination is no longer under consideration by the NPS.



Boys' Club Building
Battle Creek, Calhoun Co., Michigan
Photo 1

(8/01 before rehabilitation)

278 12+00 NNNNN-19AU 0031



Boys' Club Building
Battle Creek, Calhoun Co., Michigan
Photo 2

(before rehabilitation)

278 12-02 NNNNN+03AU.0031



Boys' Club Building
Battie Creek, Calhoun Co., Michigan
Photo 3

(8/01 Before rehabilitation)

278 12-01 NNNNN+00AU 0032



Boys' Club Building
Battle Creek, Calhoun Co., Michigan
Photo 4

(8/01 Before rehabilitation)

278 12+00 NNNNN+05AL 0028



Boys' Club Building
Battie Creek, Calhoun Co., Michigan
Photo 5

(8/01 Before rehabilitation)

278 12+00 NNNNN+05AU 0028



Boys' Club Building
Battle Creek, Calhoun Co., Michigan
Photo 6

(8/01 before rehabilitation)

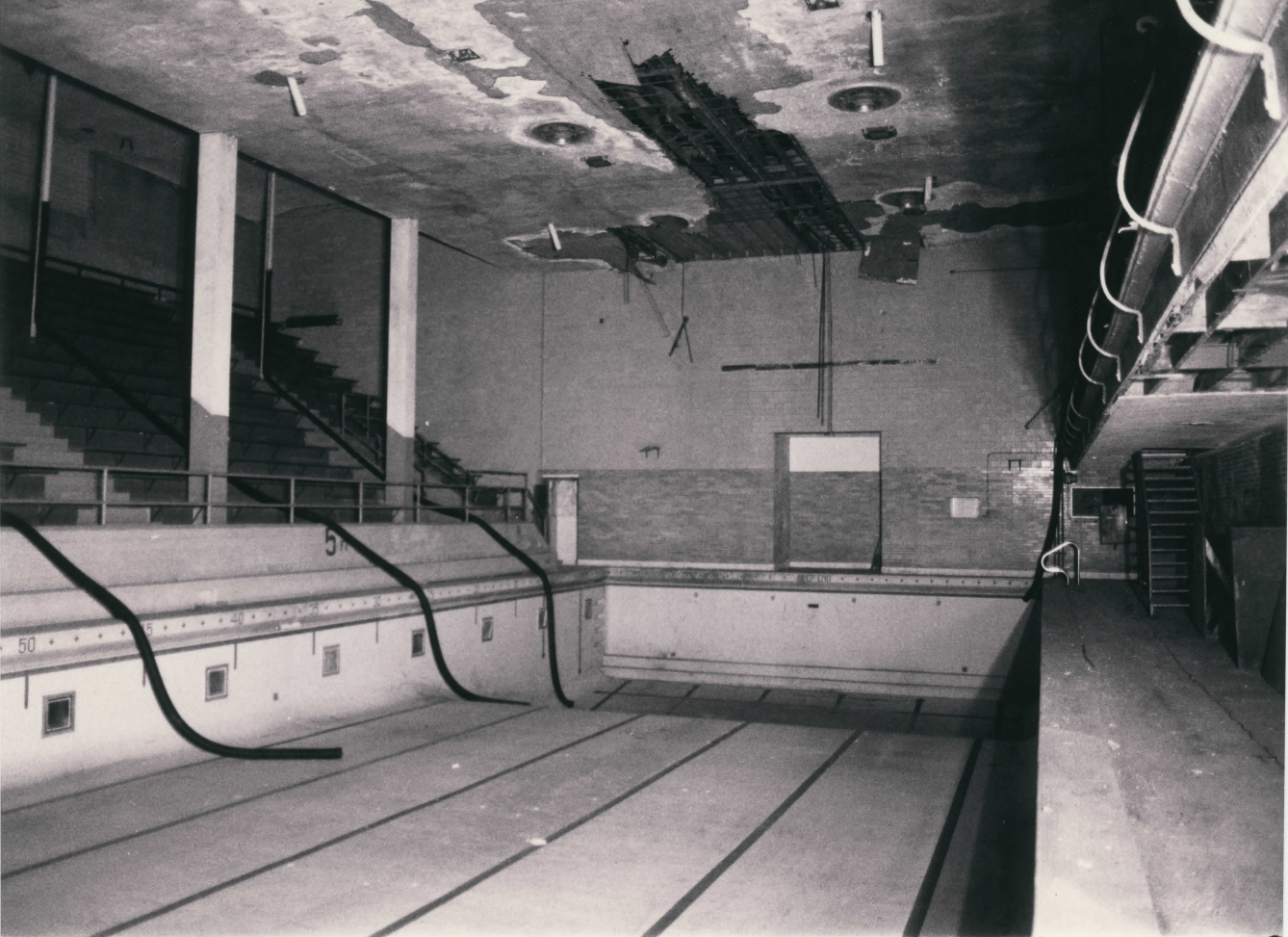
278 12+00 NNNNN+01RU 0028



Boys' Club Building
Battle Creek, Calhoun Co., Michigan
Photo 7

(8/01 Before rehabilitation)

278 12-81 NNNNNL650J 0027



Boys Club Building
Battle Creek, Calhoun Co., Michigan
Photo 8

(8/01 Before Rehabilitation)

278 12+00 NNNNN+05AU 0028



Boys' Club Building
Battle Creek, Calhoun Co., Michigan
Photo 9
(8/01 Before rehabilitation)

278 12+00 NNNNN+05AU 0027



Boys' Club Building
Battle Creek, Calhoun Co., Michigan
Photo 10
(8/01 Before rehabilitation)

278 12+00 NNNNN-07AU 0032



Boys' Club Building
Battle Creek, Calhoun Co., MI

Photo 11

(2/04 after rehabilitation)



Boys' Club Building
Battle Creek, Calhoun Co., MI

Photo 12

(2/04 after rehabilitation)



Boys' Club Building
Battle Creek, Calhoun Co., MI
Photo 13
(2/04 after rehabilitation)



Boys' Club Building
Battle Creek, Calhoun Co., MI

Photo 14

(2/04 after rehabilitation)



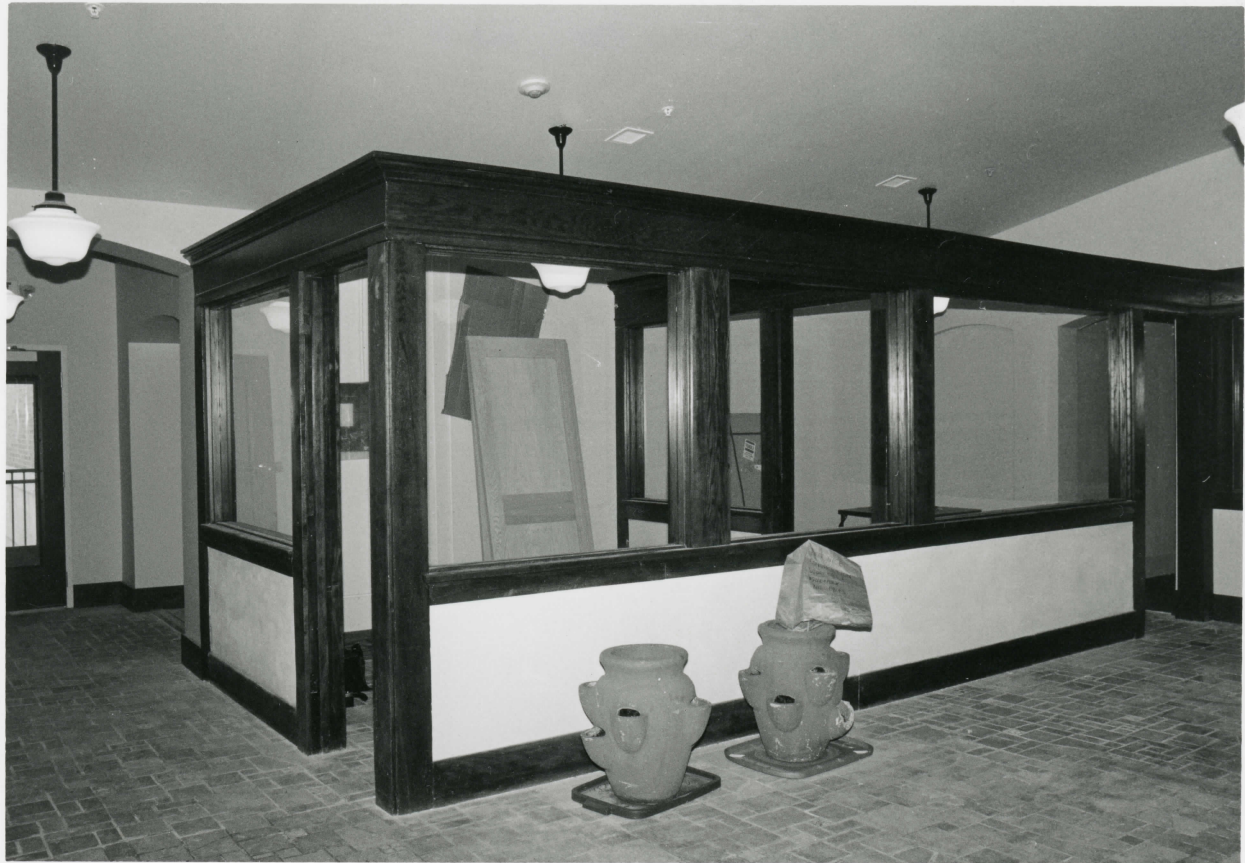
Boys' Club Building
Battle Creek, Calhoun Co., MI
Photo 15
(2/04 after rehabilitation)



Boys' Club Building
Battle Creek, Calhoun Co., MI
Photo 16
(2/04 after rehabilitation)



Boys Club Building
Battle Creek, Calhoun Co., MI
Photo 17
(2/04 after rehabilitation)



Boys' Club Building
Battle Creek, Calhoun Co., MI

Photo 18

(2/04 after rehabilitation)

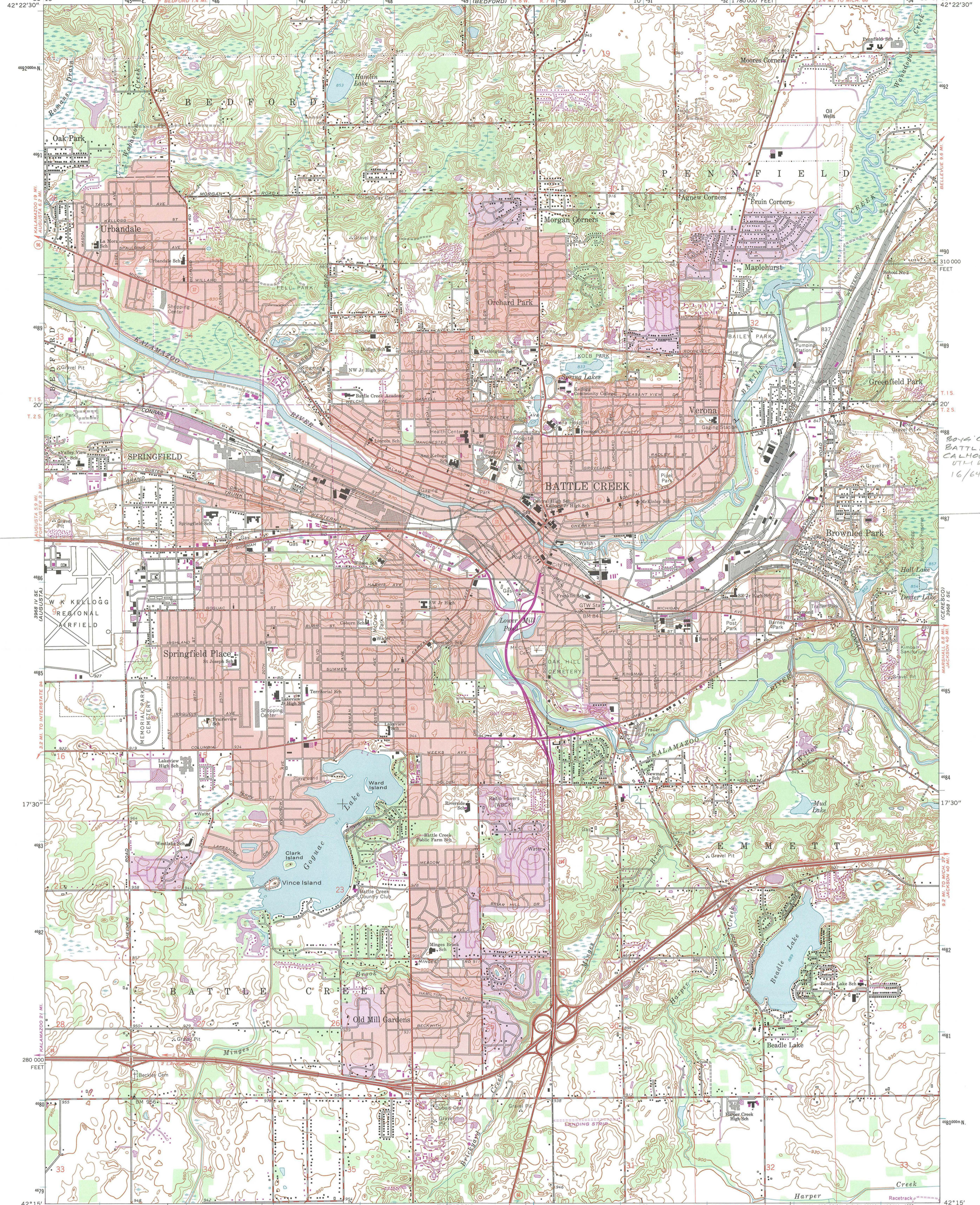


Boys' Club Building

Battle Creek, Calhoun Co., MI

Photo 19

(2/04 after rehabilitation)



BOYA CLUB BUILDING
BATTLE CREEK, MICH.
CALHOUN CO., MI
UTM REFERENCE:
16/649725/4687660

Mapped, edited, and published by the Geological Survey

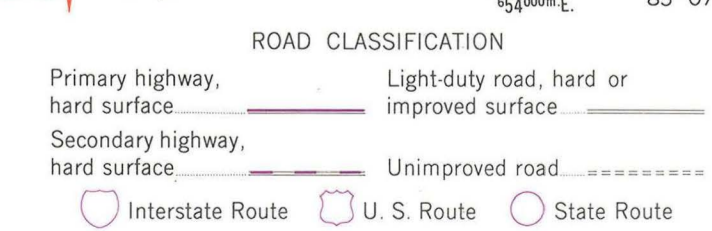
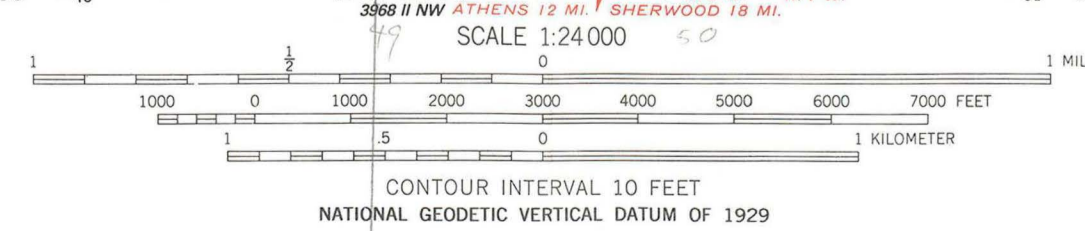
Control by USGS and USC&GS
Planimetry by photogrammetric methods from aerial photographs taken 1946. Topography by planetable surveys 1947. Revised from aerial photographs taken 1961. Field checked 1961

Polyconic projection. 1927 North American datum
10,000-foot grid based on Michigan coordinate system, south zone
1000-meter Universal Transverse Mercator grid ticks,
zone 16, shown in blue

Red tint indicates areas in which only landmark buildings are shown

To place on the predicted North American Datum 1983,
move the projection lines 1 meter north and
1 meter west as shown by dashed corner ticks

Revisions shown in purple and woodland compiled from aerial photographs taken 1980 and
other sources. This information not field checked. Map edited 1985
Purple tint indicates extension of urban areas



BATTLE CREEK, MICH.
SW/4 BATTLE CREEK 15' QUADRANGLE
42085-C2-TF-024
1961
PHOTOREVISED 1985
DMA 3968 1 SW-SERIES V862

THIS MAP COMPLIES WITH NATIONAL MAP ACCURACY STANDARDS
FOR SALE BY U.S. GEOLOGICAL SURVEY
DENVER, COLORADO 80225, OR RESTON, VIRGINIA 22092
A FOLDER DESCRIBING TOPOGRAPHIC MAPS AND SYMBOLS IS AVAILABLE ON REQUEST



JENNIFER GRANHOLM
GOVERNOR

STATE OF MICHIGAN
DEPARTMENT OF HISTORY, ARTS AND LIBRARIES
LANSING

DR. WILLIAM ANDERSON
DIRECTOR

March 31, 2004

Ms. Carol D. Shull, Keeper
National Register of Historic Places
National Park Service
1201 Eye Street, NW, 8th Floor
Washington, DC 20005

Dear Ms. Shull:

Enclosed are National Register nomination materials for the Boys' Club Building in Battle Creek, Calhoun County, Michigan. The city of Battle Creek is a Certified Local Government. We enclose a copy of the National Register Nomination Review Report for this nomination providing the city's comments.

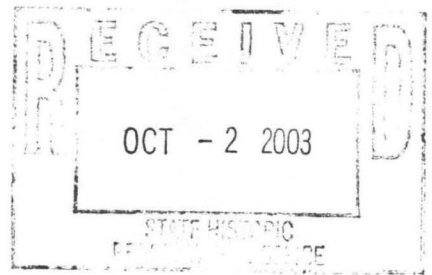
This property is being submitted for listing in the National Register. No written comments concerning this nomination were submitted to us prior to the submission of the nomination to you.

Questions concerning this nomination should be addressed to Robert O. Christensen, National Register coordinator, by phone at 517/335-2719 or by e-mail at Christensenro@michigan.gov.

Sincerely yours,

Brian D. Conway
State Historic Preservation Officer

BDC:roc



Certified Local Government
National Register Nomination Review Report

Department of History, Arts & Libraries
Michigan Historical Center
State Historic Preservation Office

Name of Property: Boys' Club Building
Address: 115 West Street, Battle Creek
Owner: Chad Hagler, Finlay Interests 15 LDHP
Date completed nomination approved by the SHPO: July 7, 2003

Date(s) of commission meeting(s) when nomination was reviewed:
August 11 and September 8, 2003 (hearing and review on 9/8/03)
Date of written notice to property owner of commission meeting:
September 2, 2003
The CLG provided the following opportunities for public participation in the review of this nomination:

public hearing -- August 11th and September 8th, 2003
Notices posted and sent to newspaper

Were any written comments received by the CLG? YES _____ NO XX
(Please submit copies with this report.)

Was the nomination form distributed to CLG Commission members? YES XXX NO _____

Was a site visit made to the property by CLG Commission members? YES XX NO _____
If yes, when? September 8, 2003

Did the CLG seek assistance of the Michigan Historical Center in evaluating the eligibility of this property for the National Register? YES _____ NO X

VERIFICATION of Professional Qualifications of Commission in accordance with 36 CFR 61, Appendix 1, of Michigan's Certified Local Government Program.
 List those commission members who meet the 36 CFR 61 qualifications required to review this type of resource.

| Commission Member | Professional Qualifications |
|--------------------------|---------------------------------|
| 1. <u>James Bauer</u> | <u>Architect</u> |
| 2. <u>Mary Butler</u> | <u>Historian/ History Major</u> |
| 3. <u>Thomas Shively</u> | <u>HDC Member</u> |
| 4. <u>Susan Lampas</u> | <u>HDC Member</u> |
| 5. <u>Norm Shively</u> | <u>HDC Member</u> |
| 6. _____ | _____ |
| 7. _____ | _____ |

Was an outside consultant used? YES _____ NO X

If yes, provide the name and list the 36 CFR 61 qualifications the person meets:

The CLG Commission finds that the property meets the following national register criteria of significance: A) Property is associated with events that have made a significant contribution to the broad patterns of our history. B) Is associated with lives of persons significant to past; and C) embodies distinctive characteristics of
 The CLG Commission finds that the property meets the national register standards of integrity.

YES X NO _____

Recommendation of CLG Commission:

APPROVAL X
 DENIAL _____ (specify reasons on a separate sheet of paper)

[Signature] _____ 9/24/03
 Signature of Chief Elected Official Date

Brian Kirkham, Mayor
 Date of transmittal of this report to MHC/SHPO 9/24/03

Date of receipt of this report by MHC/SHPO _____