

United States Department of the Interior  
National Park Service

FEB 21 1989

National Register of Historic Places  
Registration Form

NATIONAL  
REGISTER

This form is for use in nominating or requesting determinations of eligibility for individual properties or districts. See instructions in *Guidelines for Completing National Register Forms* (National Register Bulletin 16). Complete each item by marking "x" in the appropriate box or by entering the requested information. If an item does not apply to the property being documented, enter "N/A" for "not applicable." For functions, styles, materials, and areas of significance, enter only the categories and subcategories listed in the instructions. For additional space use continuation sheets (Form 10-900a). Type all entries.

1. Name of Property

historic name POND HILL SCHOOL  
other names/site number SOUTH WELLFLEET HALL

2. Location

street & number U.S. ROUTE 6 N/A not for publication  
city, town WELLFLEET N/A vicinity  
state MA code 025 county BARNSTABLE code 001 zip code 02663

3. Classification

Ownership of Property	Category of Property	Number of Resources within Property	
<input checked="" type="checkbox"/> private	<input checked="" type="checkbox"/> building(s)	Contributing	Noncontributing
<input type="checkbox"/> public-local	<input type="checkbox"/> district	<u>2</u>	<u>0</u> buildings
<input type="checkbox"/> public-State	<input type="checkbox"/> site		sites
<input type="checkbox"/> public-Federal	<input type="checkbox"/> structure		structures
	<input type="checkbox"/> object		objects
		<u>2</u>	<u>0</u> Total

Name of related multiple property listing: N/A  
Number of contributing resources previously listed in the National Register 0

4. State/Federal Agency Certification

As the designated authority under the National Historic Preservation Act of 1966, as amended, I hereby certify that this  nomination  request for determination of eligibility meets the documentation standards for registering properties in the National Register of Historic Places and meets the procedural and professional requirements set forth in 36 CFR Part 60. In my opinion, the property  meets  does not meet the National Register criteria.  See continuation sheet.  
Valerie A Talmage 2/8/89  
Signature of certifying official Date  
Executive Director of Mass. Historical Commission; State Historic Pres. Officer  
State or Federal agency and bureau

In my opinion, the property  meets  does not meet the National Register criteria.  See continuation sheet.  
Signature of commenting or other official Date  
State or Federal agency and bureau

5. National Park Service Certification

I, hereby, certify that this property is:  
 entered in the National Register.  
 See continuation sheet.  
 determined eligible for the National Register.  See continuation sheet.  
 determined not eligible for the National Register.  
 removed from the National Register.  
 other, (explain:)

Valerie A Talmage Entered in the National Register 3/23/89

[Signature] Signature of the Keeper Date of Action

**6. Function or I**

Historic Functions (enter categories from instructions)

Current Functions (enter categories from instructions)

~~EDUCATION: SCHOOL~~  
~~SOCIAL: MEETING HALL~~  
~~EDUCATION: LIBRARY~~

SOCIAL: MEETING HALL  
 EDUCATIONAL: LIBRARY

**7. Description**

Architectural Classification  
 (enter categories from instructions)

Materials (enter categories from instructions)

MID 19th CENTURY: GREEK REVIVAL

foundation BRICK  
 walls CLAPBOARD  
 roof ASPHALT  
 other

Describe present and historic physical appearance.

Pond Hill School (1857, MHC #S. E-70, Photo #1) occupies a roughly rectangular parcel of land on Route 6 in South Wellfleet, approximately two and one-quarter miles north of the Wellfleet town border with Eastham at Hatches Creek, and approximately two miles southeast of Wellfleet Center. U.S. Route 6, the major north-south highway through the Outer Cape, veers northwest at South Wellfleet around Drummer Cove directly south of the school. Pond Hill School is situated on a hill above the cove; the water view from the schoolhouse is now blocked by tree growth. Containing 1.3 acres, the property is bounded on the north by Route 6 and on the south by an unpaved way. A recently constructed post and rail fence defines the property line on the east. Views of residential subdivisions to the southeast and southwest are screened by the pine and oak trees that surround the schoolhouse.

Pond Hill School is a two-story frame structure on a brick foundation now largely concealed by cement. Asphalt shingles have recently replaced white cedar shingles on the gable roof. The schoolhouse is rectangular in massing, approximately 27 feet wide by 36-1/2 feet deep. At the roof ridge is a brick single-flue chimney set back from the north elevation (facade). Wrapped around the southwest corner of the building is a nearly square, one-story frame addition on a cement block foundation. The addition provides bathroom and storage space and was constructed in 1952 when the use of privies was discontinued. Located at the center of the rear (south) wall of the schoolhouse is a detached one-story, one-bay privy with a wood-shingled gable roof and vertical board siding. The privy is now used for storage.

The schoolhouse is an extremely plain example of the Greek Revival style with minimal exterior ornament. The center entry on the three-bay facade comprises a four-panel wood door and surround of plain boards with a wide plain frieze and cornice. Corner boards and rake boards finish the clapboard exterior. Windows contain 2/2 double-hung wood sash and have plain surrounds and shallow sills that protrude only slightly from the wall surface. The north, east, and west elevations of the original schoolhouse each have four windows, two on each floor. The northernmost first floor window on the east elevation has been converted to a fire exit screened by small trees (Photo #2), and the

United States Department of the Interior  
National Park ServiceNational Register of Historic Places  
Continuation SheetSection number 7 Page 1POND HILL SCHOOL  
SOUTH WELLFLEET, MA

southernmost second floor window on the west elevation has been converted to a fire door, opening onto a small platform with a wood stairway of eighteen risers leading to the ground. Also on the west elevation is an entrance to the 1952 addition at the southern end. The south elevation of the original building is devoid of windows, but the addition has two small, rectangular three-pane windows on the south wall and a third on the east wall.

In plan, the school house consists of one large room on each floor with smaller rooms or closets in the northern end that have been adapted to different uses over the years. A hallway approximately 6-1/2 feet deep spans the northern end of both floors. This hallway space is divided into small service rooms in the northwest corner of each floor and a narrow dog-leg stair in the northeast corner. On the first floor, the main room is nearly 26' x 28' with a platform 6 inches high and 8'6" deep spanning the southern end. Two centrally located iron columns help support the upper floor. Walls are plaster and lathe (wallpaper at one time) with wainscoting on the south wall. Above the wainscoting is the chalk tray and three wide boards, mounted and caulked, which served as mounting for the blackboard. Suspended about one foot from the ceiling above the platform are metal rods for curtains drawn when the space was used for performances. The southwest corner addition contains toilet facilities, a small closet, and open storage space, and is accessible from the interior via a door at the south end of the west wall.

The second floor is similarly dimensioned, and the classroom (a library since 1912) is outfitted with wood shelving for 4000 books. The platform of the second floor classroom is five feet deep. Walls have been refinished with knotty pine plywood paneling. In the ceiling of the small northwest corner room (the library office/storage area) is a small trap door for access to a restricted attic space. The basement consists of an eight-foot square pit cellar for plumbing and another small space for electrical connections.

Continued

United States Department of the Interior  
National Park Service

## National Register of Historic Places Continuation Sheet

Section number 7 Page 2

POND HILL SCHOOL  
SOUTH WELLFLEET, MASS.

---

Pond Hill School is the second school building on the property, replacing a one-story schoolhouse (construction date unknown) located about 100 yards southeast of the present building. Of three former outbuildings on the property, the privy near the south elevation of the schoolhouse is the only one extant. This privy is known to have existed in the 1880s and was moved from its original location southwest of the building (now on the location of the addition) to its present position ca. 1952. A second privy stood southeast of the school. These two privies served boys and girls separately. A carriage shed was constructed west of the school building on land acquired ca. 1891 for the purpose of hitching horses and carriages. The carriage shed was relocated ca. 1928 to another property about one and one-half miles away to serve as a private garage, and has since disappeared.

A strip of land along the northern boundary of the property was sacrificed to the initial construction of Route 6 in the 1920s. Redesign and widening of Route 6 in the mid-1950s resulted in the consolidation of two former driveways into a single driveway from Route 6 to Pond Hill School. The only known grading of the property since construction of the present schoolhouse in 1857 took place in conjunction with the driveway work of the 1950s.

Continued

United States Department of the Interior  
National Park Service

# National Register of Historic Places Continuation Sheet

POND HILL SCHOOL  
SO. WELLFLEET, MASS.

Section number 7 Page 3

---

## Archaeological Statement

At least one prehistoric site, 19-BN-409 a large multicomponent site may overlap onto the school property. In addition, ten known prehistoric sites have been recorded in the general area (within one mile). The physical characteristics of the property, a hill overlooking Drummer Cove and Blackfish Creek, both close to Wellfleet Harbor, would have made this an attractive area for native settlement and subsistence activities. Given locational characteristics of the property high site densities in the area and lack of major subsurface alterations or disturbances a high potential exists that sites are present.

There is a high potential for significant historical archaeological remains on the property. Controlled testing and excavation can determine the location of outbuildings, occupational features (trash pits, privies, wells) and other archaeological survivals no longer visible on the surface. At least one privy and a carriage house (now moved) have been documented on the property. The remains of a salt works may also exist on the property.

**8. Statement of Significance**

Certifying official has considered the significance of this property in relation to other properties:

nationally     statewide     locally

Applicable National Register Criteria     A     B     C     D

Criteria Considerations (Exceptions)     A     B     C     D     E     F     G

Areas of Significance (enter categories from instructions)

Period of Significance

Significant Dates

EDUCATION  
ARCHITECTURE  
SOCIAL HISTORY  
 \_\_\_\_\_  
 \_\_\_\_\_  
 \_\_\_\_\_

1857-1880  
1888-ca. 1930

N/A  
 \_\_\_\_\_

Cultural Affiliation

N/A  
 \_\_\_\_\_

Significant Person

Architect/Builder

N/A

RESIDENTS OF SOUTH WELLFLEET

State significance of property, and justify criteria, criteria considerations, and areas and periods of significance noted above.

The Pond Hill School, Wellfleet, Massachusetts, is the last of twelve district schoolhouses built in the town of Wellfleet and the earliest extant schoolhouse that maintains its original appearance. Located in South Wellfleet village, Pond Hill School was built by South Wellfleet residents during the town's population boom in the mid-19th century, and served as the neighborhood district school for twenty-three years. Later used as the home of a church auxiliary group, a local library, and the South Wellfleet Neighborhood Association, the schoolhouse has served as a focus for South Wellfleet community identity for more than a century. A severe Greek Revival style building, the Pond Hill School is a well-preserved example of 19th-century vernacular schoolhouse design on Out Cape Cod. Despite intense residential development that has encroached upon the schoolhouse's originally expansive wooded setting, the relationship between the schoolhouse and the immediately surrounding landscape has been maintained. Retaining integrity of location, design, setting, materials, workmanship, and association, the Pond Hill School fulfills Criteria A and C of the National Register of Historic Places and is important on the local level.

Residents of South Wellfleet have always considered their community distinct from Wellfleet Center, the town's civic and institutional focus located on Duck Creek to the northwest. In 1646 the bulk of the Lower Cape was known as Nauset (later Eastham). In 1722 Wellfleet was set off as the North Precinct of Eastham. Incorporated as a district in 1763, Wellfleet was made a town in 1775. Initially, the boundary between Wellfleet and Eastham was drawn at Blackfish Creek, an important harbor and the center of maritime activity for South Wellfleet. This was changed by the 1840s to a line surveyed about two and one-quarter miles further south, at Hatches Creek. The South Wellfleet community unofficially extends as far north as John Brown's Crossing, where the railroad tracks crossed the County Road, just north of the present intersection of Cove Road and Route 6.

See continuation sheet

**9. Major Bibliographical References**

9. Major Bibliographical Reference

South Wellfleet Neighborhood Association. House tour brochure. July 1980.

South Wellfleet Neighborhood Association and Social Union, Inc. The 25 Year Report. May 1962.

Stetson, Judy. Wellfleet: A Pictorial History. Wellfleet Historical Society, 1963

Massachusetts Historical Commission State Survey Team. Historic and Archeological Resources of Cape Cod and the Islands. Boston: MHC, 1987.

See continuation sheet

Previous documentation on file (NPS):

- preliminary determination of individual listing (36 CFR 67) has been requested
- previously listed in the National Register
- previously determined eligible by the National Register
- designated a National Historic Landmark
- recorded by Historic American Buildings Survey # \_\_\_\_\_
- recorded by Historic American Engineering Record # \_\_\_\_\_

Primary location of additional data:

- State historic preservation office
- Other State agency
- Federal agency
- Local government
- University
- Other

Specify repository: \_\_\_\_\_

**10. Geographical Data**

Acreage of property 1.3 Acres

UTM References

A 19 | 417140 | 4640830  
 Zone Easting Northing

C \_\_\_\_\_ | \_\_\_\_\_ | \_\_\_\_\_

B \_\_\_\_\_ | \_\_\_\_\_ | \_\_\_\_\_  
 Zone Easting Northing

D \_\_\_\_\_ | \_\_\_\_\_ | \_\_\_\_\_

Scale 1:25,000  
 USGS Quad: Wellfleet, MA

See continuation sheet

Verbal Boundary Description

The nominated property occupies lot 32 on assessor's map 202-24 for the Town of Wellfleet. See enclosed detail of the assessor's map.

See continuation sheet

Boundary Justification

The boundary includes the Pond Hill School, the privy and land historically associated with the property. A portion of the property's northern edge along U.S. Route 6 was given over to widening of the highway in the 1950's.

See continuation sheet

**11. Form Prepared By**

name/title Kathleen A. Kelly, with Elizabeth Cole, Wellfleet Hist. Com. Betsy Friedberg, MHC  
 organization Mass. Historical Commission date September 1988  
 street & number 80 Boylston St. telephone 617-727-8470  
 city or town Boston state MA zip code 02116

United States Department of the Interior  
National Park ServiceNational Register of Historic Places  
Continuation SheetSection number 8 Page 1POND HILL SCHOOL  
SO. WELLFLEET, MASS.

Maritime industries, particularly fishing, were the basis for the town's prosperity in the early 19th century. Large wharves were built at Wellfleet Center in the 1830s. At South Wellfleet, the mackerel fishing industry began sometime between ca. 1826 and 1834, when Battelle and Little of Boston built a wharf on the south side of Blackfish Creek. The large wharf was the location of sheds for storing empty barrels; cargoes of fish, mackerel bait, and salt obtained from the salt works along the creek and stored in bulk; and open sheds for packing the mackerel. About 100 yards to the south was the company's outfitting store connected to the wharf by a wooden foot bridge. In 1834 Nathan Y. Paine took over the wharf and Collins S. Cole the store, buying out the Boston owners and carrying on the business in partnership until 1840. [Cole] One salt works operation existed southwest of the schoolhouse property at Pond Hill overlooking Drummer Cove. Salt was pumped over the hill through pipes made of logs and powered by two wind mills, one located near the shore of the pond. [Cole]

A bridge constructed over Blackfish Creek in the 1820s prompted settlement to either side of the County Road in South Wellfleet. Today, Route 6 follows the path of the County Road, a regional highway through the outer Cape connecting Eastham with Provincetown. Early 19th-century settlement in South Wellfleet was oriented along the County Road and secondary arteries such as LeCount Hollow Road east of Drummer Cove and Paine Hollow Road to the west. These settlements constituted the South Wellfleet community, people united by common economic, religious, and educational concerns.

South Wellfleet's growing population was eventually sufficient to sustain the formation of the Second Congregational Society of Wellfleet in 1833. The Congregational Society burying ground, south of Blackfish Creek (now the private South Wellfleet Cemetery), was used as early as 1819. In 1833 the Society, consisting of fifty-three local residents built a meetinghouse near the cemetery. The meetinghouse remained in use until about 1890, when dwindling finances forced the Society to sell the building. In 1913, the

Continued

United States Department of the Interior  
National Park ServiceNational Register of Historic Places  
Continuation SheetSection number 8 Page 2POND HILL SCHOOL  
SO. WELLFLEET, MASS.

meetinghouse was removed to Wellfleet Center. A few years after the move, the meetinghouse burned and a reproduction was built which served as the Town Hall until a second fire in the 1960's the present Town Hall at Wellfleet Center is a reproduction of the original building. The Second Methodist Church was also formed in South Wellfleet and a church was built few hundred yards south of the Congregational Church in 1834. The Methodist Church building lasted only a few years, and the precise location of the building's foundation is unknown.

By 1840 there were twenty-one schooners landing at the Blackfish Creek Wharf, with about two hundred men and boys employed during the mackerel season of about four months. During the spring season South Wellfleet fishermen also caught cod, halibut, and haddock. By 1850 a building serving as a tavern, post office, and general store was built along the County Road near Blackfish Creek. Although the wharf business on the creek continued to operate until at least 1880, all of the fishing schooners had disappeared by the late 1860s. Economic decline came slowly, attributed to technological advances in ship building and design developed during the Civil War period and to natural changes in harbor depth and configuration. In 1870 the arrival of the Cape Cod Railroad established South Wellfleet as a railroad station and post hamlet. Both the railroad station and the post office were built near the head of Blackfish Creek. From the railroad station were shipped local oysters, clams, fish, and five-gallon demijohns of mineral water from Pilgrim Spring located at Spring Valley (Dogtown) along the County Road, roughly midway between Blackfish Creek and the village at Wellfleet Center.

Wellfleet's first schoolhouse was located on King's Highway--a precursor of the County Road--in the ponds area of northern Wellfleet. Probably erected ca. 1789, the building seated thirty-two pupils who ranged in age from ten to twenty-one. The location of the first school in the northeast quarter of Wellfleet reflects that area's early importance as a local population center, extending from Wellfleet over the town line to southern Truro. In the early decades of the 19th century of population of South Wellfleet grew to such an extent that by ca. 1840 there were four school districts in South Wellfleet alone, each with its own schoolhouse: District #1 at Trout Brook (Silver Spring) south of Blackfish Creek, #2 at Monkey Neck also south of Blackfish

Continued

United States Department of the Interior  
National Park Service

National Register of Historic Places  
Continuation Sheet

Section number 8 Page 3

POND HILL SCHOOL  
SO. WELFLEET, MASS.

Creek, #3 at Pond Hill, and #4 at Spring Valley (Dogtown). Another schoolhouse, built in 1844 by Joel Atwood on Bound Brook Island in northeast Wellfleet, served the North or Fifth School District. Generally, the district schools were taught by young women in the summer and by men in the winter when the fisher boys ages ten and up attended. The Town of Wellfleet paid all teachers' salaries but did not own all school property.

In 1859 Wellfleet had twelve schoolhouse, the last of which was Pond Hill School, constructed in 1857. Due to the financial burden of maintaining a large number of school districts, the town meeting voted in 1865 to authorize town purchase of all school properties for the purpose of consolidating the districts. The resulting new school system consisted of five primary schools (formerly district schools), two grammar schools, and one high school, the first for Wellfleet. The high school building was erected in 1866 and demolished in the 1960's, it housed the grammar school on the first floor and the high school on the top floor. Originally located midway between the pond area and Wellfleet Center, the building was moved to Wellfleet Center in 1889.

Pond Hill School was built during the time of economic and population expansion in Wellfleet, particularly in South Wellfleet. The school was built on a shares basis--initiated, supervised, and constructed by men of the local community, specifically Paine Hollow. Land for the school may have been donated by the Lewis family who owned a large amount of acreage in the area. The cost of constructing the schoolhouse was \$1646.87. Like many of the houses in nearby Paine Hollow the schoolhouse was built of timber from a Maine lumber yard transported by schooner to South Wellfleet by resident fishermen. The Winslow Smith House in Paine Hollow (ca. 1858, MHC #S. A-1) is believed to have been built from lumber left over from construction of the Pond Hill School. Paine Hollow houses are generally simple Cape Cod dwellings, but the most impressive of the nearby houses was built ca. 1850 for Captain Nathan Y. Paine, whose schooner, Golden Age, transported the Maine lumber for the schoolhouse. Captain Paine's house (MHC #S. A-11) has similar orientation and massing but is more robust in its Greek Revival detailing than the Pond Hill School.

Continued

United States Department of the Interior  
National Park Service

National Register of Historic Places  
Continuation Sheet

Section number 8 Page 4

POND HILL SCHOOL  
SO. WELFLEET, MASS

Instruction at Pond Hill School varied according to the fishing season. In the warm months, all pupils were taught by one teacher in the first floor classroom. In the winter boys over the age of ten who worked with their fathers during the fishing season attended the school. The first floor classroom was reserved for the primary grades and the second floor served as the classroom for the young fishermen. The so-called "Fisherman's School" included a class in navigation, with instruction in the use of a sextant, the determination of latitude and longitude, and the mathematics needed for navigation.

The Town of Wellfleet closed the Pond Hill School in 1880. About the same time the dwindling congregation of the Second Congregational Church Society found it beyond their means to maintain their large building (which was sold and later moved to Wellfleet Center). The women of South Wellfleet formed the Ladies Social Union as an auxiliary of the Church, and purchased the Pond Hill School in 1888 for \$100. The schoolhouse thereafter was known as the Social Union Hall. In 1891 the Social Union acquired a lot west of the Hall for a space to hitch horses and keep vehicles. This lot is now used for parking and provides a buffer from adjacent new residential construction.

Although the Hall remained a focus for activities of the Second Congregational Church congregation, in 1912 the second floor of the Social Union Hall was outfitted as a local library, a use that continues today. Between 1901 and 1914 work at the Marconi Wireless Telegraph Station about one mile east on the back (Atlantic) shore brought new people to South Wellfleet. They joined in suppers and entertainments at Social Union Hall. Religious education was another community need served by the Hall, and both Sunday School and summer Sunday worship services were held there during the 1890s and early 1900s.

Continued

United States Department of the Interior  
National Park ServiceNational Register of Historic Places  
Continuation SheetSection number 8 Page 5POND HILL SCHOOL  
SO. WELLFLEET, MASS.

By the 1920s membership in the Social Union was declining while a new organization was developing. This was the South Wellfleet Neighborhood Association with 26 charter members in 1937, many drawn from the growing number of owners of summer homes in the community. During World War II, the Association arranged a recreation program at the Hall for servicemen stationed at Camp Wellfleet (located on the old Marconi Station site). In 1945 the four remaining members of the Ladies Social Union became honorary members of the South Wellfleet Neighborhood Association and deeded the building to the Association, which was incorporated in 1957 as the "South Wellfleet Neighborhood Association and Social Union, Inc." The Association remains the owner of the Pond Hill School now known as the South Wellfleet Hall.

Pond Hill School represents a regional schoolhouse type that had developed by the early 19th century. The majority of schoolhouses were 2 1/2-story frame buildings with gable ends oriented toward the street. The 2 1/2-story structures are typically clapboarded and devoid of decorative treatments and Greek Revival or Italianate ornament. Entry was usually in the gable end, although single and paired entry examples are known. One-story schoolhouses were also constructed in Wellfleet, although none survive. Pond Hill School replaced a one-story schoolhouse that proved to be of insufficient size for the growing number of students in District #3 by the mid-1850s. The earlier school was located approximately 100 yards southeast of the present building. Another primary school (demolished ca. 1930) at the corner of Main Street and Ryder Court at Wellfleet Center was very similar to the schoolhouses at Pond Hill in size and massing, but incorporated brackets paired entrances and a semi-enclosed entry porch with columns. Pond Hill School is the last of the twelve district schoolhouses built in Wellfleet and the earliest intact surviving schoolhouse. The remains of another schoolhouse (date unknown) have been incorporated into a building that houses a home repair store on Commercial Street in Wellfleet Center.

The Pond Hill School is in an excellent state of repair. Original clapboards have been retained, with replacements as necessary. Roofing shingles are now asphalt instead of wood. Basically, the stark simplicity of the original

Continued

United States Department of the Interior  
National Park Service

## National Register of Historic Places Continuation Sheet

Section number 8 Page 6

POND HILL SCHOOL  
SO. WELFLEET, MASS.

---

schoolhouse remains. A bathroom and a storage addition, added in 1952, are compatible with the original building in design and materials and modifications to one of the original windows on each side elevation, in order to meet fire code, have been sensitively executed. The addition and two alterations do not adversely impact the architectural or historical integrity of the original schoolhouse.

The schoolhouse serves as a neighborhood library and a meeting hall for the South Wellfleet Neighborhood Association.

United States Department of the Interior  
National Park Service

# National Register of Historic Places Continuation Sheet

Section number 8 Page 7

POND HILL SCHOOL  
WELLFLEET, MASS.

While numerous prehistoric sites have been found in the Wellfleet area, most have been shell middens, burials or other smaller, special purpose type sites. In the event site, 19-BN-409 a large multi component site, extends onto the property, any surviving portions of the site would be significant. Few large multicomponent sites have been systematically studied in the Wellfleet area or, for that matter the entire outer Cape. Sites such as this would be important, by further defining the role they play in native settlement/subsistence activities in the area and their relationships to smaller special purpose type sites, common in the locale.

Historic archaeological remains described above have the potential for providing detailed information on the changing socio cultural and economic patterns that characterized early settlement in the Wellfleet, specifically, South Wellfleet area. In the event survivals of salt works exist on the property, this discovery would provide an example of earlier land use in the area surrounding the school. Salt works have not been systematically excavated on Cape Cod. Surviving outbuildings and occupational related features on the property have the potential for providing information on students and their families who used the school as well as providing information on educational methods and conditions of the period (mid 19th-early 20th century.)

United States Department of the Interior  
National Park Service

# National Register of Historic Places Continuation Sheet

Section number   9   Page   1  

Pond Hill School,  
Wellfleet, Massachusetts

---

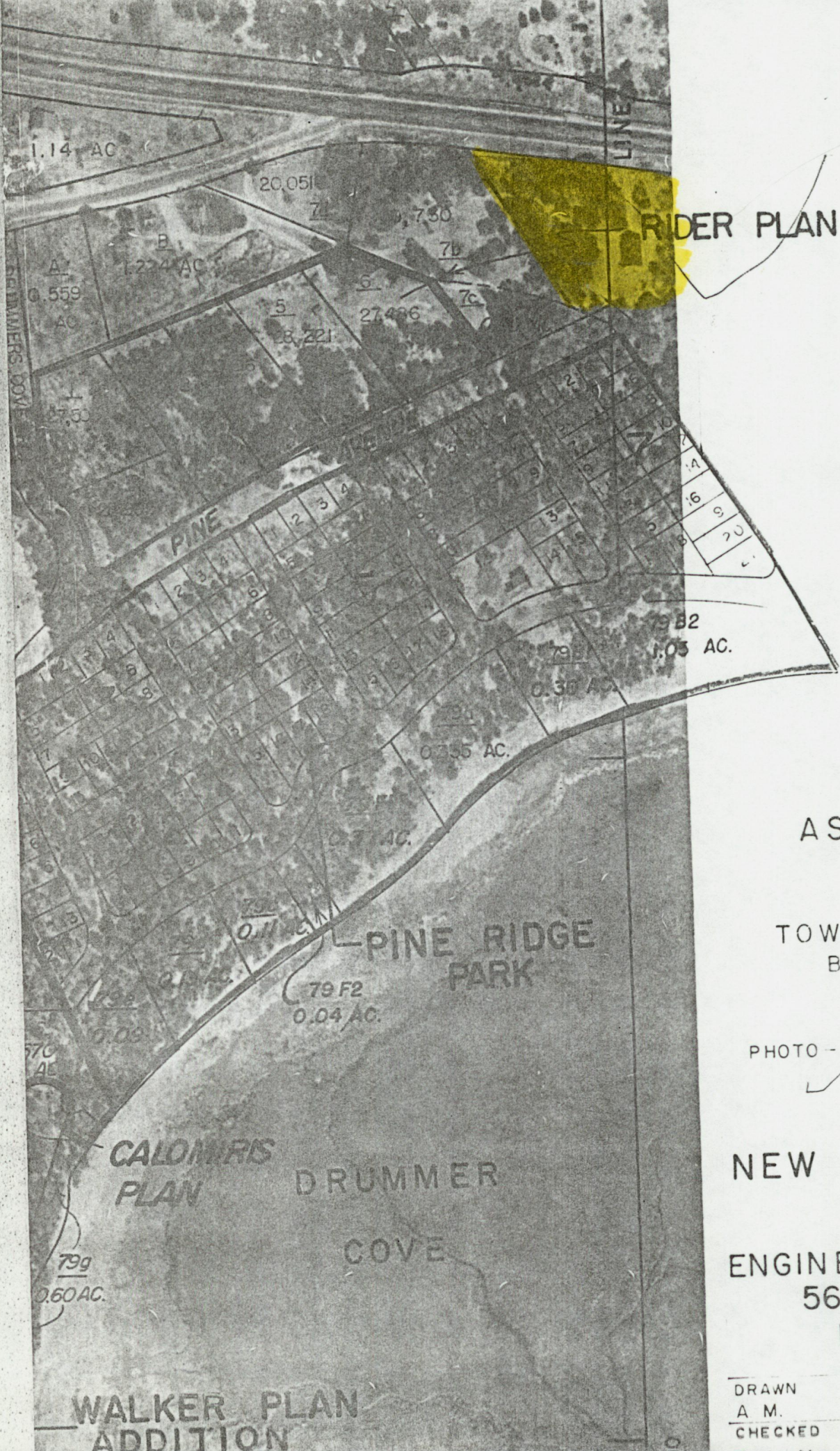
Cole, Charles F. Notes... [privately published] 1940.

Connally, Ernest Allen, "The Cape Cod House: An Introductory Study." Journal of the Society of Architectural Historians, XIX (May 1960).

Deyo, Simeon L., ed. History of Barnstable County, Massachusetts. NY: H.W. Blake, 1890.

Dooley, Margaret T. History and Lore of South Wellfleet. South Wellfleet Neighborhood Association, 1938.

Massachusetts Historical Commission State Survey Team. Historic And Archeological Resources of Cape Cod And The Islands. Boston: MHC, 1987.



RIDER PLAN

ASSESS

TOWN OF  
BARNSTA  
MASS

PHOTO-IDENTIF

*[Handwritten mark]*

NEW ENG  
SERV

ENGINEERS  
566 ATL  
BOSTO

DRAWN  
A. M.  
CHECKED

WALKER PLAN  
ADDITION



38  
Upland = 2.73 AC  
Marsh = 3.73 AC

N338,000

LINE

36  
1.62 AC

35  
2.26 AC

32

38  
1.37 AC

35  
13,246  
SQ. FT.

30  
2.4 AC

29  
0.7 AC

28  
2.27 AC

27  
1.4 AC

26  
0.73 AC

25  
0.7 AC

N337,000

DRUMMER  
COVE

8,800 SQ.

UNITED STATES DEPARTMENT OF THE INTERIOR  
NATIONAL PARK SERVICE

NATIONAL REGISTER OF HISTORIC PLACES  
EVALUATION/RETURN SHEET

REQUESTED ACTION: NOMINATION

PROPERTY Pond Hill School  
NAME:

MULTIPLE  
NAME:

STATE & COUNTY: MASSACHUSETTS, Barnstable

DATE RECEIVED: 2/21/89                      DATE OF PENDING LIST: 3/07/89  
DATE OF 16TH DAY: 3/23/89                      DATE OF 45TH DAY: 4/07/89  
DATE OF WEEKLY LIST:

REFERENCE NUMBER: 89000222

NOMINATOR: STATE

REASONS FOR REVIEW:

APPEAL: N    DATA PROBLEM: N    LANDSCAPE: N    LESS THAN 50 YEARS: N  
OTHER: N    PDIL: N    PERIOD: N    PROGRAM UNAPPROVED: N  
REQUEST: N    SAMPLE: N    SLR DRAFT: N    NATIONAL: N

COMMENT WAIVER: N

ACCEPT     RETURN     REJECT    3/23/89 DATE

Entered in the  
National Register

ABSTRACT/SUMMARY COMMENTS:

RECOM./CRITERIA \_\_\_\_\_  
REVIEWER \_\_\_\_\_  
DISCIPLINE \_\_\_\_\_  
DATE \_\_\_\_\_

DOCUMENTATION see attached comments Y/N see attached SLR Y/N

---

CLASSIFICATION

count       resource type

---

STATE/FEDERAL AGENCY CERTIFICATION

---

FUNCTION

historic       current

---

DESCRIPTION

architectural classification  
 materials  
 descriptive text

---

SIGNIFICANCE

Period      Areas of Significance--Check and justify below

Specific dates      Builder/Architect  
Statement of Significance (in one paragraph)

summary paragraph  
 completeness  
 clarity  
 applicable criteria  
 justification of areas checked  
 relating significance to the resource  
 context  
 relationship of integrity to significance  
 justification of exception  
 other

---

BIBLIOGRAPHY

---

GEOGRAPHICAL DATA

acreage       verbal boundary description  
 UTM's       boundary justification

---

ACCOMPANYING DOCUMENTATION/PRESENTATION

sketch maps       USGS maps       photographs       presentation

---

OTHER COMMENTS

Questions concerning this nomination may be directed to

\_\_\_\_\_ Phone \_\_\_\_\_

Signed \_\_\_\_\_ Date \_\_\_\_\_



Pond Hill School  
Route 6  
South Wellfleet MA 02663  
Photographer: Warren Seyfert 5/86  
Negative with W. Seyfert  
P.O. Box 276 So. Wellfleet MA 02663  
Photo ~~2 of 2~~, North and East elevation

POND HILL SCHOOL  
ROUTE 6, SOUTH WELLFLEET, MA  
WARREN SEYFERT  
MAY 1986  
NEGATIVE: W. SEYFERT, BOX 276,  
S. WELLFLEET, MA 02663

VIEW SW  
PHOTO 1 OF 2



Pond Hill School

Route 6

South Wellfleet MA 02663

Photographer: Warren Seyfert 5/86

Negative with Warren Seyfert

P.O.Box 276 So. Wellfleet MA 02663

Photo 1 of ~~2~~ East and South elevation

POND HILL SCHOOL

ROUTE 6, S. WELLFLEET, MA

WARREN SEYFERT

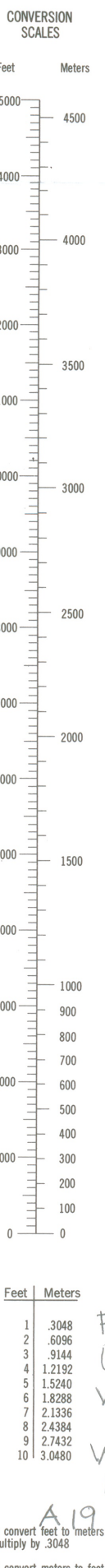
MAY 1986

NEGATIVE: W. SEYFERT, BOX 276,

S. WELLFLEET, MA 02663

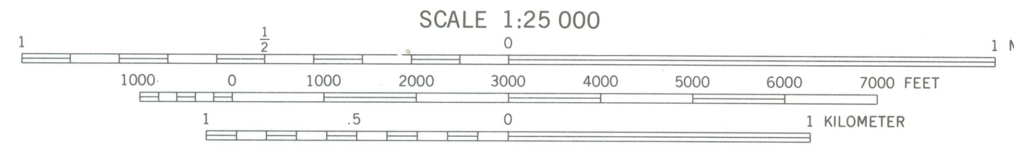
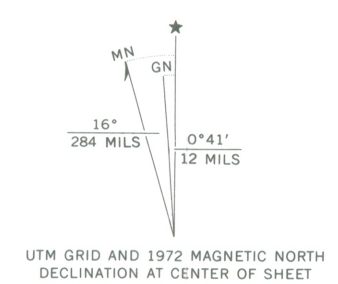
VIEW NW

PHOTO 2 OF 2



POND HILL SCHOOL  
U.S. ROUTE 6  
WELLFLEET,  
MASS.  
WELLFLEET QUAD  
1:25,000  
A 19 47140 464830  
To convert feet to meters  
multiply by 3.048  
To convert meters to feet  
multiply by 3.2808

Mapped, edited, and published by the Geological Survey  
Control by USGS, USC&GS, and Massachusetts Geodetic Survey  
Planimetry by photogrammetric methods from aerial photographs  
taken 1938. Topography by planimetric surveys 1941. Revised from  
aerial photographs taken 1971. Field checked 1972.  
Selected hydrographic data compiled from USC&GS  
Charts 580 (1972), 581 (1971), and 1208 (1972). This  
information is not intended for navigational purposes.  
Polyconic projection. 1927 North American datum  
10,000-foot grid based on Massachusetts coordinate system,  
mainland zone  
1000-meter Universal Transverse Mercator grid,  
zone 19



CONTOUR INTERVAL 10 FEET  
DATUM IS MEAN SEA LEVEL  
DEPTH CURVES AND SOUNDINGS IN FEET—DATUM IS MEAN LOW WATER  
SHORELINE SHOWN REPRESENTS THE APPROXIMATE LINE OF MEAN HIGH WATER  
THE MEAN RANGE OF TIDE IS APPROXIMATELY 7 FEET IN ATLANTIC OCEAN  
AND 10 FEET IN WELLFLEET HARBOR



ROAD CLASSIFICATION

Primary highway, hard surface	Light-duty road, hard or improved surface
Secondary highway, hard surface	Unimproved road
Interstate Route	U. S. Route
	State Route

WELLFLEET, MASS.  
N4152.5—W6957.5/7.5  
1972

AMS 6967 1 NE—SERIES V814

THIS MAP COMPLIES WITH NATIONAL MAP ACCURACY STANDARDS  
FOR SALE BY U.S. GEOLOGICAL SURVEY, RESTON, VIRGINIA 22092  
A FOLDER DESCRIBING TOPOGRAPHIC MAPS AND SYMBOLS IS AVAILABLE ON REQUEST



February 2, 1989

Carol Shull  
National Register of Historic Places  
Department of the Interior  
National Park Service  
P.O. Box 37127  
Washington, DC 20013-7127

Dear Ms. Shull:

Enclosed you will find the following nomination forms:

The Rockland High School, Rockland, MA  
The Rockland Trust Company, Rockland, MA  
Lower Union Street, Historic District, Rockland, MA  
The Phoenix Building, Rockland, MA  
The Rockland Memorial Library, Rockland, MA  
The Pond Hill School, Wellfleet, MA

All have been voted eligible by the State Review Board and have been signed by the State Historic Preservation Officer. Owners were notified of pending State Review Board consideration 30-75 days before the meeting and were afforded the opportunity to comment. Comments received to date are attached to the nomination forms.

Sincerely,

Betsy Friedberg  
National Register Director  
Massachusetts Historical Commission

Enclosure:

BF/di