

United States Department of the Interior
National Park Service



781

National Register of Historic Places Registration Form

This form is for use in nominating or requesting determinations for individual properties and districts. See instructions in National Register Bulletin, *How to Complete the National Register of Historic Places Registration Form*. If any item does not apply to the property being documented, enter "N/A" for "not applicable." For functions, architectural classification, materials, and areas of significance, enter only categories and subcategories from the instructions. **Place additional certification comments, entries, and narrative items on continuation sheets if needed (NPS Form 10-900a).**

1. Name of Property

historic name Hampden Park Historic District
other names/site number Veterans' Park

2. Location

street & number Hampden Park; roughly bordered by Hampden, Chestnut, Maple and Dwight Sts. not for publication
city or town Holyoke vicinity
state Massachusetts code MA county Hampden code 013 zip code 01040

3. State/Federal Agency Certification

As the designated authority under the National Historic Preservation Act, as amended,
I hereby certify that this nomination request for determination of eligibility meets the documentation standards for registering properties in the National Register of Historic Places and meets the procedural and professional requirements set forth in 36 CFR Part 60.

In my opinion, the property meets does not meet the National Register Criteria. I recommend that this property be considered significant at the following level(s) of significance:

national statewide local

Brona Simon July 19, 2012
Signature of certifying official/Title Brona Simon, SHPO, MHC Date

State or Federal agency/bureau or Tribal Government

In my opinion, the property meets does not meet the National Register criteria.

Signature of commenting official Date

Title State or Federal agency/bureau or Tribal Government

4. National Park Service Certification

I hereby certify that this property is:

entered in the National Register determined eligible for the National Register

determined not eligible for the National Register removed from the National Register

other (explain:)

Jon Edson W. Beall 9.10.12
Signature of the Keeper Date of Action

Hampden Park Historic District
 Name of Property

Hampden, MA
 County and State

5. Classification

Ownership of Property
 (Check as many boxes as apply.)

- private
- public - Local
- public - State
- public - Federal

Category of Property
 (Check only **one** box.)

- building(s)
- district
- site
- structure
- object

Number of Resources within Property
 (Do not include previously listed resources in the count.)

Contributing	Noncontributing	
8	3	buildings
1	0	sites
0	1	structures
8	1	objects
17	5	Total

Name of related multiple property listing
 (Enter "N/A" if property is not part of a multiple property listing)

N/A

Number of contributing resources previously listed in the National Register

0

6. Function or Use

Historic Functions
 (Enter categories from instructions.)

- RECREATION AND CULTURE/monument
- EDUCATION/school
- RELIGION/religious facility/church school
- RELIGION/religious facility/church residence
- RELIGION/religious facility/church
- GOVERNMENT/fire station
- LANDSCAPE/park

Current Functions
 (Enter categories from instructions.)

- RECREATION AND CULTURE/monument
- RELIGION/religious facility/church
- RELIGION/religious facility/church residence
- LANDSCAPE/park
- TRANSPORTATION/road-related
- COMMERCE/TRADE/business

7. Description

Architectural Classification
 (Enter categories from instructions.)

- LATE VICTORIAN/Gothic/Second Empire/Italianate/Queen Anne
- LATE 19TH & 20TH CENTURY
- REVIVALS/Classical Revival/Colonial Revival

Materials
 (Enter categories from instructions.)

- foundation: BRICK/CONCRETE
- walls: BRICK/STONE/Sandstone/Limestone
- roof: STONE/Slate/ASPHALT/METAL/Copper
- other:

Hampden Park Historic District
Name of Property

Hampden, MA
County and State

Narrative Description

(Describe the historic and current physical appearance of the property. Explain contributing and noncontributing resources if necessary. Begin with a **summary paragraph** that briefly describes the general characteristics of the property, such as its location, setting, size, and significant features.)

Summary Paragraph

The Hampden Park Historic District is located in the city of Holyoke in western Massachusetts on the west side of the Connecticut River. Holyoke is bounded on the north by the city of Northampton, on the south by the town of West Springfield, and on the west by the city of Westfield. The Mt. Tom Range of mountains extends through the center of Holyoke in a north-south direction. The historic district is in a section of the city that is elevated above the level of the river, on a plateau at the eastern foot of the Mt. Tom Range. Immediately to the east of the district the land slopes down to the Connecticut River as a floodplain that is traversed by three water power canals, and contains a commercial district, mill complexes, and civic buildings. The Holyoke Canal System Historic District (NR1980), the Holyoke City Hall (NR1975), and the North High Street Historic District (NR1986/2008) are all within this section of Holyoke. A drop in the river known as the Great Falls crosses the river between Holyoke and South Hadley Falls on the east. West of the district is a residential neighborhood called "The Highlands," as its greater elevation gives it a view east across the Connecticut River.

Narrative Description

Urban Landscape and Park

Hampden Park Historic District is made up, as its name suggests, of a designed park and buildings on the city blocks that frame the park. The paved streets of the district are bordered by sidewalks and shaded by a mixture of mature and younger street trees, largely maple. The south side of Hampden Street where two former convents are located has lawns surrounding and extending behind the buildings, and they are shaded with holly, spruce, and oak trees, but in general the rest of the district's buildings are set at their street lines as an urban landscape. District vegetation is concentrated in the park where established locust, oak, and maple trees shade the park's grass-covered land.

Hampden Park, bounded by Hampden, Chestnut, Dwight and Maple Streets and established in 1848 (MHC #HLY.902), is a rectangular park slightly under three acres in size (Photograph 1). There are no fences bordering the park; rather, there are entry sidewalks on all four sides. Circulation within the park is provided by eight radiating sidewalks that converge at a center circular plot, in a formal layout typical of the last third of the 19th century. The sidewalks enter the park at the four corners and four sides of the park. Between the sidewalks, the land is planted with grass and asymmetrically located trees and shrubs. A row of tall shrubbery stretches across the center portion of the south side of the park, acting as a buffer between the park and the busiest street bordering the district, Dwight Street. The center circular plot contains a monument and below it, flower beds fill the plot within an outer ring of low shrubbery, fenced in by a circular cast- and wrought-iron fence about three feet high (Photograph 2). An octagon of granite curbing forms the outermost border of the center plot. Approximately twenty traditional concrete and wood-slat benches have been placed in a circle around the monument and on the borders of the park, where they alternately face into the park and out towards the bordering streets. A circular sidewalk within the park, about six feet in diameter at the middle of its north end, is known as Korean Veterans Memorial Plaza.

(continued)

Hampden Park Historic District
Name of Property

Hampden, MA
County and State

Monuments and Objects

The district has one monument at St. Jerome's Church, and five are located in Hampden Park. At St. Jerome's Church, on its east side within the fencing, is a granite obelisk-shaped marker on a square granite base. It is the Rev. Jeremiah O'Callaghan memorial, which is about 10 feet tall. On the south face, the obelisk's base reads, "Rev. J. O'Callaghan." On the south face of the obelisk's second stage, an inscription reads:

"Sacred to the memory of the Rev. Jeremiah O'Callaghan a native of Macroon, County Cork, Ireland and first resident pastor and founder of St. Jerome's Church Holyoke. The duties of his laborious mission he discharged with cheerful fidelity during 56 years and as tribute of respect and love this monument has been erected. He died on the 23rd of February 1861 aged 82 years. Requiescat in Pace."

Standing in relief above the inscription on the shaft of the obelisk is a cross, on which is superimposed a chalice.

Of the five monuments in Hampden Park, the most prominent is a 16-foot high Civil War monument, (MHC #HLY.9000), located at the center of the park (Photograph 2). The monument dates to 1876. It has a statue on a three-stage granite base. The first stage, which is about two feet high, is a square plinth made up of three molding profiles with keystones centered on each side of its base, ornamented with bronze laurel wreaths about seven feet in diameter. Its upper surface rises at an angle to support a cavetto molding. Stage two is a square granite shaft about three feet in height, on whose four faces are mounted bronze plaques with Civil War scenes in high relief. Between stage two and three is a row of bronze rosettes, each about four inches in diameter. The final stage, also about four feet in height, is a narrower shaft with names of the Civil War dead inscribed on three sides and a dedication on the fourth or south side reading, "In Memory of our Volunteers who died for the Union 1861-1865." On the four sides of its lowest molding are four bronze laurel swags with bronze shields at their centers. Resting on the base is a bronze statue of a female Liberty, nine feet in height, standing on a bronze pillow. Liberty is depicted in a Neoclassical style that calls on Roman precedent for its pose, drapery and iconography. She is dressed in a star-embellished toga that falls around her in soft folds, holding out a laurel wreath in her right hand, while a large shield is propped at her side and held in her left hand. As she extends the laurel wreath of peace, she retains at a lesser position the shield of defense.

The four bas-reliefs on the Civil War monument express the experience and effects of war through a narrative sequence. The first panel shows a wife and child saying goodbye to a Union cavalry soldier and his horse, with, in the background a wall, a church spire, a building gable, and a tall tree. The second panel places the soldier in the midst of battle, mounted on his rearing horse and charging infantry soldiers. The third panel shows the soldier captive, sitting on a stump while caring for a wounded fellow soldier, and guarded by a Confederate soldier. The final panel shows a grieving kneeling wife at a grave site, an older child comforting her, and an on-looking freed slave. The style of the panels is Classical Revival, the compositions repeating those of French Neoclassical painter Nicolas Poussin, and the expressive designs, movement, and drapery suggest the work of American sculptor Augustus Saint Gaudens. The one object in the park, a flagpole, is located on the south side of the Civil War monument plot. The sculptor of the Hampden Park bas-reliefs and Liberty statue is Saint Gaudens' contemporary, American Henry Jackson Elliott.

At the park's south end near Dwight Street is a granite World War II monument, about seven feet in height set within a wrought-iron, spiked fence on a round, concrete-covered plot about five feet in diameter. The shaft is on a three-step granite base and is topped with a pyramidal granite cap. On its five faces are listed the names of Holyoke's soldiers who died in the war.

A small granite Korean War monument is located at the north end of the park. It is a rough-cut piece of granite with a slanted upper face, on which a bronze plaque lists the names of Holyoke's soldiers who died during the Korean War. It is approximately three-and-a-half feet high and two-by-two-foot square. The bronze plaque reads, "Dedicated to the memory and honor of those who gave their lives in the Korean Conflict. 1950-1955." The names of 24 men follow in two columns.

(continued)

Hampden Park Historic District
Name of Property

Hampden, MA
County and State

At the north end of the park is a three-piece monument dedicated to those who took part in the Vietnam War. They are arranged around the outer edge of the Korean Memorial Plaza. Three smooth granite slabs about three-and-a-half feet in height are placed on low concrete bases. The left stone is about four feet long. It is a slab on whose face is carved a line drawing of three half-length figures and a map of Vietnam below the title, "Taps for a Buddy." Across the top of the slab are the names, service branch, and death dates of five Holyoke servicemen. The center stone is carved with an open book across its upper surface, and on its east face, an inscription reads: "Vietnam 1959-1975." Below the inscription the eternal flame is carved, and below the flame is a row of insignia of the branches of the armed services. The open book reads:

"In sincere appreciation to the men of Holyoke who gave their lives in the Republic of Vietnam. To the Men and Women called upon to serve during an era of discord and turmoil and did so with great personal strength and courage. To those who have not returned and may never return we will never close the book on you".

The right monument is a slab about four feet long. On its face is inscribed, "We stand free because they fought." It has three half-length artillery soldiers carved in a line drawing below its title. Five names of service men are also carved on the face of the monument.

Buildings

St. Jerome's Church and St. Patrick's Chapel, 181 Hampden Street, 1858 (church construction date), 1935 (date of partial re-construction of church after fire) and 1899 (Chapel, MHC# HLY.123). St. Jerome's Church occupies a corner lot and is bordered at the sidewalk by a cast- and wrought-iron fence that has granite entry posts (Photograph 3). In the southeast corner of the lot is a large copper beech tree. Foundation plantings are set along the church foundations. The brick, limestone, and brownstone Gothic Revival-style church is Latin Cross in plan and rests on a brownstone-block foundation. It is 1½ stories in height under a steeply pitched and slate-covered roof. The front-gabled church has a centered tower on its south façade. Tower corners are framed with buttresses that have brownstone caps at each story. The tower is one bay wide and contains the main entry: a recessed Gothic arch with engaged colonettes in the jambs leading to the portal. Above the portal in the field of the arched entry is a tall Gothic pointed-arch window, with tracery above three stained glass panels. The tower rises above the roof level in two stages: the first a stage of paired and louvered, pointed-arch window openings, and the second a copper-covered belfry with paired tracery openings and copper-covered corner buttresses. Above the two stages rises a copper-covered polygonal spire. In the angles at each side of the center tower are two small, 1½-story towers with single, pointed-arch openings in each of their exposed elevations. Adjacent to the east tower is a date stone reading 1856. The nave of the church is five bays deep, and four of the bays contain Gothic pointed-arch windows glazed with leaded glass. The first bay on both east and west elevations contains a one-story, gable-front wing that contains secondary entries with pointed-arch surrounds and limestone-capped parapet roofs. The transept of the church is larger on the west elevation than the east elevation, and on the north end of the church the nave ends in a polygonal choir two stories in height. Extending across the north elevation is a one-story wing that terminates on the east with a polygonal secondary chapel, and on the west attaches to a later addition, which is a connector between Saint Jerome's Church and St. Patrick's Chapel. On the roof at the crossing of the transept and nave is a secondary, copper-covered rood spire with delicate copper finials at each of its polygonal corners. The north wing contains the vestry and is seven bays long. Its center bay is a gabled entry that is raised above ground level.

Attached by a one-story connector at the northwest end of the church is St. Patrick's Chapel. Both the Chapel and connector were added to the church in 1899 (Photograph 4). Echoing the church facade, the brick Chapel has a steeply pitched front-gable roof. Gothic Revival in style, it has a shallow pavilion three bays wide on its five-bay façade. Centered on the pavilion is a pointed-arch Gothic entry with double-leaf doors beneath a tracery gable field. A narrow

(continued)

Hampden Park Historic District
Name of Property

Hampden, MA
County and State

brownstone stringcourse divides the first and attic levels. In the pavilion, the stringcourse serves as the window sills for a bank of pointed-arch windows. In the second, attic, level the center bay consists of a projecting stone niche in which is a limestone statue of St. Patrick. Angled buttresses project from each corner of the chapel's façade. The buttresses terminate in tall, copper-covered spires whose pedimented ornament is repeated on three small cupolas of copper that are located on the slate-covered roof ridge. At each end of the roof ridge is a copper Latin cross. The chapel is seven bays long and in the second and fifth bays are projecting chapels one story in height and one bay wide. Their front-gabled roofs have gablets at each side.

Convent of the Sisters of Notre Dame de Lourdes, 85 Chestnut Street, 1869 and St. Joseph's Chapel 1902 (MHC # HLY.1216). The Convent of the Sisters of Notre Dame is a Second Empire-style brick building, 2½ stories in height under a slate-covered mansard roof (Photograph 5). The convent has a 2½-story ell on the west with a mansard roof. The ell is two bays long and is attached to a two-story brick connector leading to a brick, Gothic Revival style chapel, 1½ stories in height under a steeply pitched, sided-gabled, slate roof. The short connector and the chapel were both added to the convent in 1902, and the west ell addition to the main block, followed by the connector and an L-shaped chapel, creates a complex plan.

The main block of the convent is three bays wide and three bays deep for a square plan. On the east façade of its main block, a center pavilion projects slightly from the plane of the façade. On the first floor, a center entry, preceded by a one-story wood porch, supported on Italianate-style paired posts, is flanked at each side by a three-sided bay window with 1/1 wooden sash. The east façade entry has a simple, footed brownstone lintel above a transom light. Double leaf doors are replacements from the 1970s-1980s. First-floor windows on the north and south elevations have wooden 2/2 sash. At the second floor level on the façade, the pavilion contains a pair of round-arched windows, while at each side in the outer bays is a pair of segmentally arched windows. Lintels and sills of the windows are rusticated brownstone, and the center door surround has a segmentally arched brownstone lintel as well. The pavilion rises above the roof as a large, square wood tower base that is three bays wide. The center bay of the base is a recessed, arched niche that formerly held a statue of the Virgin, and at its sides are full-height 4/4 sash windows. The three bays of the tower base are separated by pilasters supporting a full entablature that includes a classically inspired cornice with a dentil row. A tower formerly atop the base is gone. At each side of the tower base on the lower slope of the mansard roof are small, front-gable dormers. The other elevations of the building have segmentally arched windows at the first and second stories, and front-gabled dormers projecting from the attic level on the lower slope of the mansard roof.

Attached to the two-bay long convent connector on its west elevation is a chapel that is Gothic Revival in style. The basilica plan St. Joseph's Chapel, 1902 (MHC # HLY.1216) is one story in height. The brick building has a projecting brick portico on its east elevation, with an entry, not on the north or east where it would face a street, but on its south elevation facing the convent and inner courtyard. The chapel is three bays long and one bay wide, and has engaged buttresses at its four exterior corners. Windows are pointed Gothic arches, and are glazed with clear and yellow leaded glass. The ridge of its slate roof runs in a north-south direction. Metal Celtic crosses ornament each gable-end of the roof ridge.

The St. Jerome Rectory, 169 Hampden Street, 1880 (MHC #HLY.125), is bordered at its sidewalk by a low, neatly clipped hedge and low foundation hedges are punctuated at building corners by tall juniper bushes. The rectory is a 2½-story, red-brick building, laid with a white mortar to highlight the pattern of the brick (Photograph 6). The rectory has a slate-covered mansard roof. The main block of the Second Empire-style building is three bays wide and seven bays deep for a rectangular plan. On the east is a two-story wing under a low-pitched, hipped roof, and on the north is a shallow two-story ell with a one-story attached bay, both under shallow hipped roofs. The east wing is three bays wide

(continued)

Hampden Park Historic District

Name of Property

Hampden, MA

County and State

and two bays deep, and extends on the north beyond the north wall of the main block of the building. On the east elevation of the wing is a one-story brick addition, with a shed-roofed porch on its south façade. The mansard roof of the main block has eaves above a frieze, ornamented with a row of modillion blocks above a dentil row. This frieze is repeated at the two matching porches of the south façade and west elevation. Matching porches often were a feature of the Second Empire style. On the lower slope of the mansard roof are dormers with individual mansard roofs, the eaves of which are supported on carved consoles. The façade of the main block of the building consists of two, three-sided bays, three stories in height, flanking a center entrance. The first two stories are brick, and the third story is wood, flushboarded on its exposed elevations. South façade windows in the brick stories have brownstone, open-pedimented lintels that are oversized and bring to the Second Empire building an exaggeration that is part of the overall larger proportions of the style. They are carved with triangular panels at each side of a center rondel. Continuous brownstone sills create a contrasting beltcourse, and brownstone also forms a watertable above a high basement. The center entrance of the south façade is sheltered by a wood porch, the flat roof of which is supported on columns with composite capitals. The entrance has a double-leaf paneled door with a leaded-glass upper half, and above it is a large, segmentally arched transom light. At the second-story level in the center bay is a paired window, an Italianate feature that was borrowed by the Second Empire style. On the east and west elevations, first-floor windows have pedimented lintels, and second-floor windows have hooded lintels. Lintels on the north elevation are all hooded. Sash in the window openings of the house are 1/1 on the first floor and 2/2 on the second floor. On the west elevation, the matching porch is reached by a carved brownstone stoop. This portico has had glass and wood panels inserted behind its columns to provide an enclosure. On the north side of the building is a one-story brick garage, one bay wide beneath a hipped roof. The rectory with its brick exterior and slate mansard roof was designed to fit into the context of the neighboring parish buildings, the church of 1858 and the convent of Sisters of Notre Dame de Lourdes of 1869.

School of the Immaculate Conception of Notre Dame de Lourdes, 91 Chestnut Street, 1883 (MHC #HLY.1217). The Italianate-style School of the Immaculate Conception of Notre Dame de Lourdes is a 2½-story, red-brick building with brownstone and limestone trim (Photograph 7). The east-facing building is H-shaped in plan with two parallel, front-gabled wings separated by a side-gabled main block. Each wing is four bays wide and five bays deep. The main block is three bays wide. A five-story tower occupies the center bay of the east elevation of the main block, and serves as the building's principal entry. Beneath pressed metal, bracket-supported roofs that make returns, the building is ornamented with a brownstone watertable above a high basement and brick stringcourses at window lintel level. Windows in the wings and main block are segmentally arched and round-arched, and have brownstone sills and limestone lintels with brownstone keystones and springing blocks. All the windows in the building have metal replacement sash in openings that were enclosed to suit the size of the new sash. In the gable end of each of the wings is an Italianate-style, triple-arched window with limestone and brownstone lintels and springing blocks. The main block of the building has segmentally arched windows as well, but each opening has paired 1/1 sash, now boarded up. The center tower has an arched main entry at the top of a low stoop, with the name of the school and its date in relief. The arch of its surround alternates brownstone and limestone blocks in a checkerboard pattern. Above the school name plaque is a pair of windows, followed by a single window opening at the third story level, and a slate mansard roof. The arches of these windows repeat the alternating limestone and brownstone pattern. Atop the mansard roof is an open-arched belfry below a final, four-sided, louvered stage topped by four pediments. A metal cross is centered above the last stage. There are secondary, arched entries to the building on the south and west elevations.

Situated on the west side of the School of Immaculate Conception are two one-story, temporary classrooms under shallow side-gable roofs. The classrooms are vinyl-sided, have asphalt shingle roofs, and their foundations are screened by vinyl aprons. They are four bays long and have metal end-bay doors with three bays of horizontal metal windows. They are one room deep. The classrooms are noncontributing due to their recent date of construction.

(continued)

Hampden Park Historic District
Name of Property

Hampden, MA
County and State

Convent of the Sisters of Providence of Saint Vincent de Paul, 218 Hampden Street, 1886 (MHC #HLY.127). The Convent of the Sisters of Providence is a 2½-story brick building that is H-shaped in plan (Photograph 8). The Queen Anne-style building has a center 2½-story main block under a side-gable roof and extended wings on each end with front-gabled roofs. The wings extend beyond the main block on both north and south to create an H-plan. The building sits on a high basement. Centered on the five-bay-wide main block is an entry bell tower, sided in decorative wood shingles, which rises three stories in height under a steeply pitched hipped roof of slate. A metal cross tops the tower. A stoop of brownstone rises to the entry and is sheltered by a flat-roofed porch on replacement posts. The porch roof has a band of dentils at its cornice. Rusticated brownstone trims doors and windows. The wings are three bays wide and six bays deep. Now boarded up, windows have 1/1 sash, granite lintels, and rusticated brownstone sills. Centered on the roof of each wing is a transverse gable with a Palladian window in its field. Similar Palladian window compositions are found in the gable ends of the wings, linked under a single brownstone lintel. A full-width porch runs between the wings on the south elevation. It rests on thin replacement posts and has a square baluster railing nailed in contemporary fashion to the edges of the porch floor. Centered on the south side of the building's roof is a hipped-roof dormer. There are two interior chimneys in the building. This building repeats the overall plan of the nearby School of Immaculate Conception and is relatively close in elevation, suggesting an intention to create a stylistic unity between the two buildings, which were built three years apart.

The George H. Perry House, 214 Maple Street, (pre-1873, MHC #HLY.169) is a three-story, Italianate-style brick building with a shallow-pitched gable roof (Photograph 9). It has a one-story brick ell on the east or rear elevation. The main block of the building is three bays wide and the equivalent of four bays deep. It has a side-hall entry with a large entry portico, supported on oversized consoles sheltering a broad entry under a single brownstone lintel. The entry has been altered with a contemporary glass door and glass sidelights, and is reached by a brick stoop. A low brick wall, adjacent to the stoop, screens exposed basement windows, which have brownstone lintels and sills. The first-floor windows of the west façade are full-length under straight brownstone lintels. They have 20/20 replacement sash. At the second-floor level, windows have 16/16 sash and at the third floor, sash is 9/9. All are replacements. Roof eaves on the west façade are very shallow, and below the eaves there is a row of dentils creating a narrow cornice line on the west façade. Gable-end eaves are clipped. On the south elevation at second- and third-floor levels, the main block has loading bay openings that are now fenestrated, beneath a pulley arm. The ell is seven bays long, six bays of which are filled with nearly full-height, segmentally arched windows above segmentally arched basement windows. The bays are separated by piers in industrial building fashion. The wing has a very low-pitched roof. The main block of the building, with its full-length, first-floor windows and elaborate portico, is Italianate in style and its ell is a utilitarian industrial composition.

The William Whiting School, 70 Chestnut Street, (1910, MHC #HLY.367), is a two-story, Colonial Revival-style brick building with a high, exposed-brick basement story (Photograph 10). The building has a flat roof, surrounded by a low, copper-capped parapet wall. The west-facing building is seventeen bays wide at the second story, thirteen bays of which are within a projecting pavilion. It is the equivalent of eleven bays deep for a rectangular plan. The building is constructed of Flemish bond brick with black headers, and has Indiana limestone trim at two basement stringcourses, a wide watertable, window lintels, and a cornice trimmed with limestone plaques at the parapet. Limestone voussoirs ornament the two arched openings in the outermost bays of the west façade, as well. The center entry in the pavilion has lost its segmentally arched pediment, but a portion of the limestone architrave surround remains at each side of the recessed opening. Windows at the first floor have continuous label lintels and at the second floor have splayed lintels with keystones in the pavilion and label lintels in the outer bays. Window sash are 2/2 in the main windows, but 12/2 around the entry and in the basement openings. In the outer bays the 12/2 windows have transoms of eight lights. There are metal replacement windows with 1/1 sash on several ranges of windows on the east elevation. The north and south elevations of the building are blind for the first four bays, then have three center bays of windows followed by a range of five sash on the northeast corner. There are five pivoting windows on the southeast corner, rather than sash windows. Their lintels follow the pattern of the west façade.

(continued)

Hampden Park Historic District
Name of Property

Hampden, MA
County and State

Central Fire Station, 206 Maple Street, (1914, MHC #HLY.240). The Central Fire Station, now serving as a transportation station, is a four-story, red-brick building with cast-stone trim (Photograph 11). Its elevation is divided into a Classical Revival base, two-story shaft, and capital, topped by a parapet wall. The base, or first floor of the west façade is composed of five bays that were originally closed by wooden vehicle doors for the fire equipment, but are now glazed. Between the first and second floors is a broad cast stone entablature with projecting cornice. The second section of the building, the two-story shaft, is divided into five bays by brick pilasters with stone bases and capitals. The pilasters support a second entablature made up of stone blocks. Each of the five bays of the second and third stories contains a pair of windows with 1/1 sash, stone sills and lintels. The fourth floor, or capital in the Classical Revival scheme, repeats the five bays with smaller pairs of windows, though there are no pilasters separating the bays at this level. The windows are beneath a third entablature composed of a stone architrave and cornice, separated again by a brick frieze. A paneled parapet wall surrounds the top of the building. The façade composition is carried over onto the north elevation and for the first bay of the south elevation. The two upper entablatures are also carried onto the south elevation. On the north side of the building is a brushed metal, seven-bay porte-cochere structure for busses that dates to 2011.

Archaeological Description

While no ancient Native American sites are located in the Hampden Park Historic District, sites may be present. Six ancient sites are known in the general area (within one mile). Most known sites are located on floodplain and upland terraces along the eastern shore of the Connecticut River. Two sites are recorded on the floodplain of the Connecticut River's western shoreline. Environmental characteristics of the district are not favorable for the presence of Native sites. The level to moderately sloping district is elevated above the level of the Connecticut River, on a plateau at the eastern foot of the Mt. Tom Range. The Connecticut River, the nearest natural wetland, lies over 1,000 feet to the north, east, and south of the district. While soil types in the Hampden Park area appear well drained, the designation of soils in the area as urban land makes soil characteristics in the district locale impossible to identify. Soils designated as urban land have been altered or obscured by urban works and structures. Buildings, industrial areas, paved parking lots, sidewalks, roads, and railroad yards cover most of the surface. Given the above information, the size of the district, the extent of historic land use, and known patterns of Native settlement in the Connecticut River Valley, a low potential exists for locating ancient Native American resources in the district.

A high potential exists for locating historic archaeological resources in the Hampden Park Historic District. While the city of Holyoke was set out as part of the Agawam Plantation in 1636, early settlement was made on the east bank of the Connecticut River because of the flood-prone characteristic of the western bank. Actual settlement of the Holyoke area did not occur until ca. 1745. Most of the city remained sparsely settled agricultural land until a formal plan for the city was laid out in 1848. That plan included the grid of city streets and three parks, including Hampden Park, between Maple and Chestnut Streets. Actual development of the district locale did not occur until ca. 1858, with the construction of St. Jerome's Catholic Church.

While many of the district's religious, institutional, and civic buildings surrounding Hampden Park are extant, several others may survive as historic archaeological resources. Structural evidence may survive from an old wood school that was moved to the site of the Convent of the Sisters of Providence of Saint Vincent de Paul at 218 Hampden Street, shortly after construction was completed at St. Jerome's Church in 1858. The old wood school was demolished between 1883 and 1886. Structural evidence may also survive from the St. Jerome's Institute (1871), a school for boys built to the west of the church. Structural evidence may survive from the Harkins Home for Aged Women, originally built on Elm Street on the block of the School of Immaculate Conception.

Archaeological evidence from at least one fire station may also survive in the district. Structural evidence from the Emerald Fire House, built in 1880, may survive on the lot at 70 Chestnut Street. The Emerald Fire House was closed in 1914. The lot is now occupied by the Whiting School playground.

(end)

Hampden Park Historic District
Name of Property

Hampden, MA
County and State

8. Statement of Significance

Applicable National Register Criteria

(Mark "x" in one or more boxes for the criteria qualifying the property for National Register listing.)

- A Property is associated with events that have made a significant contribution to the broad patterns of our history.
- B Property is associated with the lives of persons significant in our past.
- C Property embodies the distinctive characteristics of a type, period, or method of construction or represents the work of a master, or possesses high artistic values, or represents a significant and distinguishable entity whose components lack individual distinction.
- D Property has yielded, or is likely to yield, information important in prehistory or history.

Criteria Considerations

(Mark "x" in all the boxes that apply.)

Property is:

- A Owned by a religious institution or used for religious purposes.
- B removed from its original location.
- C a birthplace or grave.
- D a cemetery.
- E a reconstructed building, object, or structure.
- F a commemorative property.
- G less than 50 years old or achieving significance within the past 50 years.

Areas of Significance

(Enter categories from instructions.)

- ARCHITECTURE
- ART
- COMMUNITY PLANNING AND DEVELOPMENT
- EDUCATION
- RELIGION
- SOCIAL HISTORY

Period of Significance

1848-1962

Significant Dates

Significant Person

(Complete only if Criterion B is marked above.)

Cultural Affiliation

Architect/Builder

Patrick Charles Keeley, John Donahue, Oscar Beauchemin, G. P. B. Alderman, architects.
Henry Jackson Ellicott, sculptor

Period of Significance (justification)

The year of 1848 was chosen to begin the period of significance as it was the date of the plan for the industrial city of Holyoke. In that year, Hampden Park and the district streets—Chestnut, Hampden, Maple, and Dwight—were all laid out. 1962 marks the 50-year cutoff date for National Register eligibility.

Hampden Park Historic District
Name of Property

Hampden, MA
County and State

Criteria Considerations (explanation, if necessary)

The district meets Criterion Consideration A as a district where most of the resources are or were associated with religious institutions. The district includes two properties that are still in religious use, St. Jerome’s Catholic Church and St. Jerome’s Rectory. Whiting School, the Convent of the Sisters of Providence, the Convent of the Sisters of Notre Dame de Lourdes, and the School of the Immaculate Conception of the Sisters of Notre Dame de Lourdes, all once in church ownership, are no longer so.

Statement of Significance Summary Paragraph (Provide a summary paragraph that includes level of significance and applicable criteria.)

Hampden Park Historic District is historically significant as an example of mid 19th-century city planning. Holyoke was planned as an industrial city; its 1848 plan provided for public parks within a street grid where lots were to be developed for resident mill workers’ homes, their stores, churches, and city government—a plan that was carried out and is largely intact today. The historic district is significant for its geometrically symmetrical designed park that reflects the later 19th-century’s formal landscape design concepts, which introduced art into ordered public spaces as a means of historical commemoration, but also as a means of public education in the arts to elevate residents.

The historic district is architecturally significant as the location of architect-designed Gothic Revival, Italianate, Second Empire, Queen Anne, Classical, and Colonial Revival-style buildings representing the late 19th- and early 20th-century’s dominant architectural trends. It is significant for the collective work of Roman Catholic Church-specialized architects Patrick Charles Keeley and John Donohue, as well as for the work of local architects Oscar Beauchemin and G.P.B. Alderman.

The district is significant as the location of the first Roman Catholic parish in Holyoke, the church, convents, schools, home for aged women, hospital, and rectory of which served immigrant populations for many generations, specifically the Irish community. As a parish that operated through the 20th century, it is significant as an example of the impact of the religious orders on the industrial cities of the Northeast in education and charity.

The district meets criteria A and C and Criterion Consideration A for the National Register and is of local significance. Its period of significance is 1848-1962.

Narrative Statement of Significance (Provide at least one paragraph for each area of significance.)

Plantation Period (1620-1675)

The City of Holyoke was set out as part of the Agawam Plantation, founded as a private plantation by William Pynchon in 1636. The vast plantation included what are now the communities of Westfield, West Springfield, Southwick, Holyoke, Chicopee, Ludlow, Wilbraham, Hampden, Longmeadow, East Longmeadow, and portions of northern Connecticut. The first settlers intended to place their homelots on the west bank of the Connecticut River, called “Agawam” by the Native Americans, but shifted to the east bank when warned away from the west by the Native Americans, who explained that this bank was flood-prone. In 1641 the Massachusetts General Court recognized the plantation as Springfield, and parishes gradually separated from the larger plantation.

Colonial Period (1675-1775)

The areas that were to become Holyoke and Chicopee separated from Springfield as Ireland Parish in 1750, and it is thought that six Irish families had settled in what is now Holyoke by 1745. In 1774, Holyoke was further separated to

(continued)

Hampden Park Historic District
Name of Property

Hampden, MA
County and State

become part of West Springfield, finally coming into its own as an incorporated town in 1850. It was an agricultural community made up of Irish settlers who farmed on the plains along the Connecticut River and fished its waters. Settlers attended church in the West Springfield churches and developed connecting roads. The main north-south connector was what is now US Route 5, with several east-west connectors, and a ferry that crossed the river to Chicopee.

Federal Period (1775-1830)

Town Development

During the Federal period, Holyoke remained an agricultural village connected to the more industrialized South Hadley on the east shore of the river, which was at the opposite end of the Great Falls, a substantial drop in the river. The two villages were connected by a swing ferry in 1828, which made business between the two more attractive and gave Holyoke access to a late 18th-century canal system built in South Hadley for the transportation of goods and materials. In Holyoke the Hadley Falls Company was formed to take advantage of the new cross-river connection, and it built the first of what the company planned as a series of cotton mills in Holyoke in 1827, the village's first water-powered industry.

Early Industrial Period (1830-1870)

Town Development

Holyoke remained agricultural until 1845, when a railroad was built between Northampton and Springfield, passing through Chicopee and Holyoke. With a railroad adjacent to a major falls in the Connecticut River, two of the major infrastructure features necessary for industrial development were in place: a means of transportation and a power source. Consequently, a group of Boston investors bought up land and began to plan Holyoke as an industrial city on the west bank of the Connecticut River.

The industrialists Edmund Dwight, George W. Lyman, and Thomas H. Perkins took over an earlier company that had been formed to use water power for industry, the Hadley Falls Company, which had failed to thrive. The newly reconstituted Hadley Falls Company laid out a formal plan for the city in 1848. The plan called for three canal levels, among which new mills were to be located. Spreading out from this waterpower system of canals, raceways, and gates, a grid of streets was laid out for the residents' living needs. Within the grid of streets the plan called for three parks between Maple and Chestnut Streets. Provision of the parks reflected the current interest in New England communities in the Village Improvement Movement, in which town commons were cleaned up, planted and maintained as a means of bettering the appearance of towns and to make them more attractive to new residents. Among the three parks set aside for Holyoke was Hampden Park, and it is the only one of them to remain today. On the plan it was designated as "The Common," suggesting its intended purpose as symbolic city center .

Construction of the "New City," as Holyoke was called in 1848, began along the Connecticut River and Main Street, then proceeded up the hill towards the west. The first building in the area above the canals was the Second Congregational Church (1852), built at the corner of Dwight and High Streets. It was followed by the 1860 Church of St. Jerome on Hampden Street, which launched the Hampden Park development.

Construction of the planned grid of streets and parks began at the same time as a new wooden dam was being built in 1849. Construction of the 1845 railroad and the 1849 dam coincided with the Irish potato famine in the south counties of Kerry and Cork and the two civil engineering projects provided work for the many Irish families who fled to avoid starvation. While many Irish workmen came to work on the railroad in 1845, it does not appear from the census figures, which lumped Holyoke with West Springfield together, that they remained in Holyoke. But when the first dam began, the Irish who came to construct it settled in the village and stayed. They were able to stay because work was steady.

(continued)

Hampden Park Historic District

Name of Property

Hampden, MA

County and State

When the wooden dam at the Great Falls collapsed on its first day of full use in 1849, the Hadley Falls Company immediately determined to rebuild a second dam, this time in masonry, which assured future employment for many of the newly arrived Irish. Then they stayed to build the mills that followed, and, finally, to run the mills.

In 1850 Holyoke was incorporated, and from that time the census figures accurately represent the number of Irish who were here. There were an estimated fourteen households in Holyoke in 1845, and by 1850 there were a documented 3,245 residents, the majority of whom were Irish. Whereas immigrants settling in Springfield, Boston, Worcester, and other cities in Massachusetts came to well-developed communities into which they had to integrate, those who came to Holyoke were its earliest settlers, so it was the Irish institutions, traditions, and most importantly, religion, that dominated. It is for this reason that Holyoke, the "Paper City," stood out among Massachusetts towns with its majority population of Roman Catholics, rather than Protestants.

The Catholic Church, centered in Springfield, responded to the influx of Irish families by establishing a parish that included all of Holyoke, South Hadley, Granby, and Chicopee (known as Cabotville at that time), and priests from Cabotville came to Holyoke to hold services in homes and later a hall. But as their numbers increased, the Church established its own parish for Holyoke. The first of the Hadley Falls Company lots to be sold, in fact, was to a Catholic priest, Father Strain, near Dwight and Elm Streets, although he later sold it. Lots sold for one dollar in the area of Hampden Park to a number of tenement builders and, as time went on, they also sold to Irish families. As the Irish families worked they were able to move from a shanty village at the edge of the Connecticut River up to the plateau, which eventually led to the Irish concentration in this section of Holyoke that came to be known familiarly as "The Patch."

In 1861, the Holyoke Water Power Company donated Hampden Park to the City of Holyoke. For many years it remained an open space that was hayed during the summer. In 1866, Father Harkins of St. Jerome's Roman Catholic Church purchased lots bordering the park on Hampden and Chestnut Streets, and development around the park began. The city made plans in 1871 for construction of City Hall on Dwight and High Streets (in a NRHD), and completed the building in 1876. Together, City Hall and Hampden Park, a block away, formed the city's official center. By the time the Holyoke map of 1870 was prepared, Hampden Park's symmetrical layout of paths radiating from a central circle had been established and six years later the park's main feature, the Civil War monument, was erected in the circle. Early photographs indicate that the land between the radiating walks was planted in grass, and trees were set out, but there were no fences bordering or within the park.

St. Jerome's Roman Catholic Church

The residential draw to this section of Holyoke was the presence of the Catholic Church (Photograph 3). In 1854 Father Jeremiah O'Callaghan arrived in Holyoke to create St. Jerome's Catholic Church. An Irishman who often spoke and preached in Gaelic, he bought the lot where the church stands today on Hampden Street for \$1 from the Hadley Falls Company, and by 1856 the church was in construction. At its completion in 1860, it had cost \$17,000. The architect chosen to design the church was recorded in A Century of Catholicism in Western Massachusetts, as "architect Keely [sic.] from Brooklyn," the prolific Catholic Church architect, Patrick Charles Keeley, of Brooklyn, designed, it is thought, over 700 Catholic and Protestant Churches in New England and New York from the 1840s through the 1880s. As originally built, the church extended from the present façade only to the transept, so it was a modest basilica in plan. Shortly after its completion, Father O'Callaghan, who was in his mid-70s when he came to Holyoke, died at age 82 in 1861. His replacement, Rev. James Sullivan, officiated in the church for five years before being replaced by Father Harkins. During his tenure Sullivan established the St. Jerome cemetery, which is less than a mile to the west and not in the district. It was Father Harkins who, over his 44-year tenure, developed the St. Jerome parish, most of which remains today in the Hampden Park Historic District.

(continued)

Hampden Park Historic District
Name of Property

Hampden, MA
County and State

Once the church was built, Harkins' first concern was religious education, as the after-school and Sunday School classes were inadequate to properly educate the children of the parish in their religion. He arranged for the Sisters of Notre Dame de Lourdes to come to Holyoke from Cincinnati and run a girls' school on the site of today's Convent of the Sisters of Providence of Saint Vincent de Paul, 218 Hampden Street. It was an old wooden school that he bought and had moved to the site. When the first four Sisters arrived in November 1869, they had a new convent, (the Convent of the Sisters of Notre Dame de Lourdes, 85 Chestnut Street, 1869), in which to live (Photograph 5). Two more Sisters arrived the next month, and together the six women began teaching the 217 girls who showed up for school the first year.

Development of Holyoke's Industries and their Labor Force

Meanwhile, the planned textile mills had not developed to the extent that they had been envisioned and the Hadley Falls Company folded in the Panic of 1857. But the Company's successor, the Holyoke Water Power Company, actively encouraged other kinds of manufacturers than textiles to build on the canals for a more diverse industrial base, and at the end of this period in 1870 there were sixteen paper mills, seven cotton mills, three woolen mills, three lumber mills, two machine shops, and a number of smaller businesses in operation. The Irish families were mainly known to work in the paper mills and early on their women and girls worked the rag rooms, tearing up rags. The filthy rags carried diseases which infected many of the women, and started several smallpox epidemics that swept through St. Jerome's Parish.

Parish politics, governed by the Springfield Diocese, were conservative during the Early Industrial period. When laborers on the masonry dam called a strike over the pace at which they were expected to work and over a pay cut from 75 cents to 70 cents an hour, the Cabotville priest, rather than advocating for his parishioners, went to the work site and convinced the men to call off their strike. St. Jerome's priests did not involve themselves in strike support when their hard-working parishioners struck for an eleven-hour day in the textile and paper mills. Without institutional support, strikes were poorly organized and often failed, so the rise of the labor movement in Holyoke was not historically associated with the Catholic Church. Education and institution-building took precedence over labor issues in St. Jerome's Parish.

Firefighting

Holyoke's first fire company was established in 1849 by the Hadley Falls Company. One of the first things they did was buy a fire engine and organize a volunteer fire-fighting force as insurance for their investments. Then, in 1850 Holyoke residents voted to establish a public Fire Department, and in the following year the first company, the Mount Tom Hose Company No. 1, was established to cover the center of Holyoke, the only area thought especially vulnerable to fire. The City appropriated \$1,300 for the new fire company to buy an engine, hose, hooks, and ladders, and the engine they bought was that of the Hadley Falls Company, a hand-operated, Button engine. Within a few months the company had 62 volunteers, and a chief who was paid \$20 a year for his services. A second company was formed in 1852, the Union Hook and Ladder Company. The first dedicated engine house was built on High Street in 1864.

Late Industrial Period 1870-1915

St. Jerome's Church

St. Jerome's Church Parish saw its greatest period of physical development during the Late Industrial Period. To build his parish, Father Harkins began consolidating land on Chestnut and Hampden Streets and the east side of Elm Street to complete an entire block west of Hampden Park. At the same time, he built St. Jerome's Institute as a school for boys (now gone). The Institute was completed in 1871 and was located west of the church on its same Hampden Street lot. Three hundred boys attended the Institute in its first year. To teach the boys, Harkins brought the Sisters of Providence of St. Vincent de Paul to South Hadley Falls and set them up in a house there, where they ran an orphanage and home for the sick and poor and taught in Holyoke.

(continued)

Hampden Park Historic District
Name of Property

Hampden, MA
County and State

With the boys' school in place Harkins turned to building a rectory, and in 1880 he built St. Jerome's Rectory, 169 Hampden Street (Photographs 6, 12). The rectory was designed by a diocesan architect surnamed Murphy, but about whom nothing else was recorded. A more suitable school for the girls than the old wooden one was soon needed, and the School of the Immaculate Conception of Notre Dame de Lourdes at 91 Chestnut Street was completed in 1883 (Photograph 7). Between 1883 and 1886 the old wooden school was demolished, students moved into the School of the Immaculate Conception, and the Sisters of Providence got their own Sisters of Providence of St. Vincent de Paul Convent at 218 Hampden Street in 1886 (Photograph 8). From the convent Harkins moved to constructing St. Patrick's Chapel, 181 Hampden Street, (Photograph 4) on the west side of the church in 1899, and he remodeled the church as well, adding the transepts, vestries, and baptismal chapel on the north end of the church. The Harkins Home for Aged Women was built on Elm Street, on the block of the School of Immaculate Conception with the land and money given by Father Harkins. It is now gone, as is Providence Hospital, which was on the block facing Dwight Street and which Harkins had helped locate and fund. (Both sites are outside the boundary of the nominated district.) In 1902 St. Joseph's Chapel was added to the Convent of the Sisters of Notre Dame on Chestnut Street. Before his death in 1910 Harkins took the clock out of the church steeple.

Town Development

From 1870-1890s there was a population boom in Holyoke created by the ongoing arrival of Irish, and by new groups from Canada and Eastern European countries. During those two decades more than half of the population was foreign-born. In 1880, the Irish formed 40 percent of the workers in the paper mills and 17 percent of the workers in the wool, cotton and silk textile mills. French Canadians made up about 28 percent of the town's population, and they were 40 percent of the textile workers and about one-tenth of the paper mill workers. The parish that Father Harkins built served the Irish mill workers and their families, but as French Canadian and Polish workers arrived in Holyoke, they first attended St. Jerome's before reaching a critical number to build their own churches. It is for this that St. Jerome's is considered the "Mother Church" to Holyoke's Catholic population. With Hampden Park at its center, the neighborhood was growing, and its families served the labor needs of the city's paper mills. For its part, the city built a firehouse on Chestnut Street to protect the neighborhood and a public school nearby for the burgeoning population.

Social and Religious Issues

The Late Industrial Period was the nadir of living conditions for the mill workers. By law, in the 1860s, children were required to attend school three months of the year, but there were no legal requirements on the number of hours children could work, nor on their working conditions. Until 1874, children worked 69-hour weeks in the mills. In that year a law stated that minor children could not work more than 60 hours, but the law was not universally respected. During this period Holyoke's resources were strained beyond capacity to remedy the poor living conditions of its immigrant residents. Putting in water and sewer lines, monitoring tenement conditions, establishing a Board of Health, and treating the two smallpox epidemics, meant that charity was left mainly to the churches. As St. Jerome's was putting its money into developing the parish with church, schools, convents, and rectory, it did not feed and clothe its poorest parishioners in the manner the Protestants felt it should. The first of the conflicts between Protestants and Catholics took place over this issue from their respective pulpits. Protestants felt they were carrying the burden of charity for all Holyoke citizens, not just their Protestant members. From St. Jerome's perspective, diverting more than 500 children from the public schools to the parochial schools was a benefit to Holyoke of considerable value. The tension between the two religious and class groups developed during this period and grew for decades. Fewer in numbers, the Yankee Protestants were mainly middle and upper class, and were the owners and managers of the mills. In 1878 William Whiting, for instance, a Protestant Yankee after whom William Whiting School was named, became Mayor of Holyoke.

(continued)

Hampden Park Historic District

Name of Property

Hampden, MA

County and State

More representative of the class division in the district was the Perry family at the George H. and Laura Perry House, 214 Maple Street, (pre-1873, MHC #HLY.169). Connecticut-born Perry was a supervisor in a paper mill and lived with his Vermont-born wife Laura and three children—Franklin, Ella, and E. Lizzie—in this house, which, judging by its form, was built as the first of anticipated rowhouses on the east side of the street facing Hampden Park (Photograph 9). In 1870 the Perrys' seventeen-year-old son Franklin had finished with his education and was following family tradition—his grandfather had been a Holyoke papermaker in 1850—and was also working in the paper mills; the two younger children were still in school. Laura was able to remain working at home, unlike any women in the mill laboring families. By 1900 George Perry had retired from the paper industry, but was working as a church collector. He and Laura continued to live in this house and boarded their daughter Emma, who was 32 and not working, and two middle-aged women who worked in the paper mills.

However, in Holyoke it was not a simple matter of Catholics vs. Protestants. Despite their common Catholic religion and attendance at St. Jerome's, there were ethnic divisions among the subsequent immigrants from Eastern Europe and from Canada, who established their own neighborhoods and competed for jobs with the Irish. The French Canadian Catholics and the Polish Catholics settled below and east of High Street, the Irish above and west of High Street. The groups had their own church-based social organizations and remained separate within the city, so each church developed its own character. St. Jerome's was a laborers' church and its parishioners were among the poorest of the city, the least educated, and their housing of the poorest quality. The social problems engendered by poverty in the St. Jerome parish were attacked by Father Harkins from his pulpit. His style was characterized by Holyoke historian Constance McLaughlin Green as giving "roaring injunctions against the toughs from 'Tiger Town,'" with the result that the young men who were raising trouble in the neighborhood—which came to be called for a while "Tiger Town"—were controlled. To address excessive drinking, Father Harkins formed the St. Jerome's Temperance Society, and in an unusual spirit of cooperation the Society joined the Baptist-led temperance movement in 1877 to stop alcohol drinking altogether. Women were not exempt from his social concerns, and for them he formed Sodalities, which were groups of women and girls who determined to live more closely to their religious rules and from which candidates for the religious orders were encouraged. To make it a clean sweep, he formed the Holy Name Society to promote the use of reverent language. While the Temperance Society eventually had its own hall, St. Jerome's Church was the home base for the groups. Church parades and celebrations were launched from the Common, which was later to become Hampden Park (Photograph 1).

For all immigrants, working conditions were often severe, but there was support for some poor immigrants among their friends and relatives, and gradually conditions improved as the 20th century began. By the 1890s St. Jerome's parish members were third generation, and the dissent between Catholics and Protestants had eased significantly. Still, in 1906 Catholics were 70 percent of the city's population. A series of oral histories collected by American International College in Springfield adds context to the Irish immigrant experience of this period. Annie Kane came to Holyoke in 1897 with her Irish family. She grew up on Lyman Street in the parish and left school at fourteen to work in the textile mills. In an oral interview she said, "I went into the Hadley Mill to work at 14 for \$6 a week, six to six, as a doffer. We had to all pitch in. Out of \$6 I got fifty cents...I used to save that to go dancing. ...I liked working. If I didn't I'd have gone back to school. I had a lot of friends at work and that's really what made me stay. When I was 16 that's when I went on a machine as a spinner. I made eight and a half a week."

In 1910, the city completed construction of the William Whiting School, 70 Chestnut Street,(1910, MHC #HLY.367) It replaced an elementary school on south Chestnut Street that had become overcrowded and outdated, but it also was built on the site of the North Chestnut Street School. Whiting School was designed by Holyoke architect George P. B. Alderman (1862-1942, Photograph 10). Built for \$60,000 to serve kindergarten through 8th grade during the day, William Whiting School also functioned as an evening school for immigrant classes, a function that was not uncommon in

(continued)

Hampden Park Historic District
Name of Property

Hampden, MA
County and State

Massachusetts mill towns in this period. The school had twelve classrooms on the first and second floors and the basement, and offices on the first floor for both the day and evening school staffs. With a capacity of 500 children, the new school's construction was a response to a large immigrant population, with many issues relating to the poverty in which they lived. At the time that it was opened, an article in the Holyoke Post Transcript described the school as the first in Holyoke to make design improvements for children's health. Although the article assured its readers that the school had no unnecessary frills and was built only with practicality, it went on to say that it was the first school in the city and in western Massachusetts to have shower rooms in the basement, where children at certain hours of the day could clean themselves under the supervision of a matron. It was the first school to have a room whose pivoting windows could bring in maximum fresh air to children. Air shafts were built into the core of the building so that fresh air could circulate through the classrooms, and large windows in the main classrooms allowed adequate sunshine into the rooms. A large playroom in the basement gave children a place to exercise during the school day, then served in the evenings as a social center for young men from the neighborhood. Provision of an evening social center as well as a venue for voting made the school a community center. William Whiting School was staffed almost exclusively by Irish-American women teachers during its first years.

Although he was not Irish, George P. B. Alderman was a school specialist whose three sisters were all teachers in the Holyoke Public School system. Alderman designed schools, public buildings, and private homes in Holyoke, Northampton, Westfield, Chicopee, Ludlow, Springfield, South Hadley, and other towns and cities in western Massachusetts. In fact, Alderman designed the main Holyoke Post Office and five houses on nearby Dwight Street, as well as office buildings and club buildings on Chestnut and High Streets, and numerous houses in the Highlands during his active career. It is Alderman's work that helped set the standards for public architecture in Holyoke spanning the end of the 19th and early 20th centuries.

The man for whom the Whiting School was named, William Whiting, was important in Holyoke's history as a paper manufacturer, philanthropist, and politician. He lived from 1841-1911, so the school was built and dedicated to him during his lifetime. As a man who had grown with Holyoke's industry and had served in city and U.S. government, Whiting was considered a role model for the Holyoke school children of Ward 4.

St. Jerome's Parish

At the schools of St. Jerome's parish, changes occurred in 1912 when, after Father Harkins' 1910 death, his position was taken over by Father Madden. The latter brought a teaching order to the schools to replace the Sisters of Providence, whose mission was health care rather than education. Twenty-four Sisters of St. Joseph arrived in 1912 and moved into the Convent of the Sisters of Providence on Hampden Street. They ended the separation of boys and girls in the classroom and introduced a stronger curriculum. The elementary grades were in the Institute on Hampden Street, and the upper grades at the School of Immaculate Conception on Chestnut Street. Marking their arrival, the 1902 chapel that had been added to the Convent of the Sisters of Notre Dame de Lourdes was dedicated to St. Joseph and put at the service of the Sisters.

Development of "The Common" to Hampden Park

At the Common large changes took place during this period. The plot of land had been deeded to the City in 1861. With construction of City Hall several blocks away on Dwight Street, this block became the city's center, so its choice for the monument was logical. The open common became a designed park, renamed Hampden Park, as part of a Civil War commemoration. Eleven years after the war's end, Holyoke residents determined to create a permanent memorial to the 55 Holyoke men who had died during the war. Prior to that there had simply been a wooden cross in Forestdale Cemetery. The resulting monument was dedicated on the 4th of July in 1876; the park was planted with trees and shrubbery, and the monument was surrounded by a cast-iron fence.

(continued)

Hampden Park Historic District
Name of Property

Hampden, MA
County and State

The sculptor chosen for the monument was Henry Jackson Ellicott (1847-1901). Ellicott was among a group of American artists specializing in military monuments who became well known after the Civil War. Notable is the fact that he fought during the war as a Confederate. In Holyoke, his selection was seen as an act of reconciliation that was further underscored by the fact that the figure Ellicott sculpted was not the usual militaristic soldier, but the figure of Liberty holding out a laurel wreath, standing for immortality. In fact, Ellicott's alternative Civil War memorial design was for a Union soldier standing with his rifle at his side, and it came to be reproduced and distributed throughout the country for civic monuments and individual grave markers. The Liberty statue created for Holyoke was unique within his *oeuvre*. The statue of Liberty was cast by the Maurice J. Powers foundry, a New York foundry involved in production of much of the metal sculpture of the era.

The monument was an early work of the sculptor who had been born in Maryland. Ellicott was the great grandson of Major Andrew E. Ellicott, engineer to Pierre L'Enfant in the planning of Washington, D.C. Henry Jackson Ellicott studied at the National Academy of Design between 1867 and 1870 and his first commissions were cemetery markers. Following work in Holyoke, Boston, and Philadelphia, Ellicott was named by President Harrison as Chief of the United States modeling shops and chief modeler. He moved to Washington, DC in 1889 and began a long series of pieces focused on the Civil War. He created two statues for Gettysburg National Military Park in 1890; at the Library of Congress he contributed sculpture to the building and then contributed to the displays at the Smithsonian. He created two equestrian monuments: one of General George B. McClellan (1894) in front of Philadelphia City Hall; and a second in 1896 of General Winfield Scott Hancock, for Washington, DC.

Dedication of the monument was a civic event of considerable pomp. Thousands of Japanese lanterns were hung around Hampden Park and a parade of soldiers, War of 1812 veterans, floats, mill workers, and more lasted for two hours. St. Jerome's Temperance Society, the Ancient Order of Hibernians and the Catholic Mutual Benevolent Society marched along with German, French, and Scottish societies. It was recorded that 2½ tons of ice were used for free drinks for parade viewers, and that 125 gallons of lemonade were distributed. The police reported their satisfaction at having only eight drunks to manage at the end of the day. Leftover food was given to the poor of Holyoke.

Hampden Park was maintained with few changes for the next 86 years, and the monument became the focal point for Memorial Day celebrations, as well as an icon for the city that was reproduced for many years, in all seasons, on postcards. It was a source of civic pride and education. In 1898 two gold cash prizes were offered to high school students who would write the best biographies of the soldiers who were named on the monument. The winning essay published by the Holyoke Daily Telegraph newspaper described them as paper makers, plumbers, and mechanics.

By the 1890s, Hampden Park's grassy areas around the Civil War monument had grown dense with shrubbery, flowers and mature trees. Cannons were later added to the park, but were removed for use as scrap metal during World War I. A gazebo was built in the early 1900s and later torn down.

Central Fire House

Improvements to the firefighting system in Holyoke continued during this period. A second firehouse known as The Emerald Fire House, perhaps referring to its Irish neighborhood, was built in 1880 on the lot at 70 Chestnut Street (now the Whiting School playground), and in 1883 the city got its first fire-alarm system, which was kept in the basement of City Hall. Conditions for firefighters improved slowly. In 1890 a semi-permanent firefighting force was established and was on-call for fires. Five years later, the force was made permanent.

By 1906, land values had risen on High Street to the extent that the fire commissioners wanted to demolish the High Street firehouse and sell the land. At the same time, consolidation of the High Street and Emerald Fire Houses was considered prudent. The arrival of motorized fire equipment finally tipped the scales towards a new firehouse, and in

(continued)

Hampden Park Historic District
Name of Property

Hampden, MA
County and State

1914 the High Street station was demolished, the Emerald Fire House was closed, and its members moved to a new station, the Central Fire House that was built at 206 Maple Street (Photograph 11). Central Fire House was built to cover the city center and to accommodate mechanized equipment. In 1915 a completely new fire alarm system run on batteries was installed in the firehouse, and the Fire Chief had a dedicated automobile to get him to the fires.

Central Fire House's architect was Oscar Beauchemin, a Holyoke architect who had offices in the City Bank Building on Holyoke's High Street, and lived with his wife Mary and son Raymond on Appleton Street. Beauchemin designed both residential and commercial projects, and just prior to this project, he had designed a house at 298 Chestnut Street. He was representative of many Holyoke professionals: his family had arrived as immigrants and by the second generation had taken positions of responsibility in the community. The Beauchemins were French Canadians, and Oscar was three years old in 1879 when Louis and Emma came to Holyoke with him and his four siblings. Louis Beauchemin was a blacksmith, Emma worked in the home, and the two older children went right to work as teenagers in Holyoke's textile mills. The younger children, however, attended Holyoke schools. The course of Oscar's education has not been researched, but he was practicing architecture by 1900.

Early Modern Period (1915-1940)

St. Jerome's Church and the Central Fire House

While Father Madden was invested in improving St. Jerome's schools, his successor, Father Fagan, focused his attention on refurbishing the parish buildings when he took over in 1926. After several years of fundraising, Fagan in 1929 had the church interior redecorated and interior decorating work done on the schools and convents. Spending more than \$100,000, he had the old stained glass—including the transept windows—replaced at the church, made alterations to some of the interior woodwork, and repainted its walls.

Meanwhile, the Central Fire House was being modernized. By 1922, all the vehicles in the firehouse were mechanized and motorized, replacing the horse-drawn pumps, and Central Fire House became the first fire station in Massachusetts to be completely motorized. Yet to be improved was the water supply and the firefighters' work life. The station's fire-fighting water supply came from a reservoir in the city center from which water was pumped through pipes to its most crowded neighborhoods and then pumped into the fire engines. Prior to World War I, Holyoke firemen worked every day of the week. In 1918, voters approved a two-platoon system of firefighters, allowing the men to have more normal working hours. In 1941, the fire department put its men on a 70-hour per week basis.

The history of St. Jerome's Church and that of Central Fire House converged on March 16, 1934, when a church fire took place. The fire began in a vestry on the north end of the church and spread through the nave. It was stopped before spreading to St. Patrick's Chapel by the firemen of Central Fire House, but the fire resulted in the death of the chief and injuries to one other of its firefighters. Photographs from the fire show that the structural timbers on the interior were charred, the roof was severely burned, and some of the rafters and tie beams were no longer intact. The exterior walls were intact.

Father Fagan decided to rebuild the church. As reported by the Holyoke Daily Transcript, "Monsignor Fagan decided that the church would be reconstructed with every possible detail the same as it had been before the fire." There were changes, however. The nave was extended eight feet in length and the vestibule enlarged into the nave. The seating capacity of the church went from 1,700 to 1,400. Two Gothic columns inside the nave were not rebuilt, and trusses were inserted to carry the weight of the roof they had formerly carried. Two new side exits were inserted to meet fire code. A new roof, new lath, and plaster were installed, and three new altars, a new organ, new lighting fixtures, and rubber compound flooring were put in place. The architect for the work was John W. Donahue of Springfield, the Springfield

(continued)

Hampden Park Historic District
Name of Property

Hampden, MA
County and State

Diocese architect who was responsible for hundreds of Catholic buildings in western Massachusetts. On the exterior, a four-inch brick veneer was laid on the added vestry to match the original brick color. The cost of the work to rehabilitate the church was \$350,000. While the work went on, services were held at the Institute adjacent to the church. It took a year and a half to complete the work. Father Fagan died in 1942, and was followed by Father Andrew Martin.

Throughout this period membership in the church remained relatively steady, while the overall city population declined from 60,816 in 1915 to 53,750 in 1940. In 1936, St. Jerome's church had 3,379 members; in 1946 there were 3,561 members. The number of new Catholic Churches increased by three large parishes between 1917 and 1926. In 1940, Holyoke was named by the Federal Council of Churches of Christ, the "Most Catholic City in America." The political and religious strength of St. Jerome's was tested in that very year when birth control advocate Margaret Sanger scheduled a visit to the city and was offered meeting space in the First Congregational Church. St. Jerome's Church, led by Father Fagan, protested and pressured the city to negotiate a retraction of the invitation by threatening a Catholic economic boycott. In a move that confounded stereotyping and revealed the rise of the city's labor movement, Sanger held her meeting at the Textile Workers' Union Hall at the invitation of its female Catholic secretary, Anna B. Sullivan.

One of the vehicles for the growing labor movement was a weekly Holyoke paper called The Artisan. It was published by Alden Press, which had been established in 1915 by Edward S. Alden, company president. In 1917 Alden Press bought the George H. Perry House, 214 Maple Street (Photograph 9), and added the east ell to it to contain a printing plant and job department. The printing plant held a rotary press, a monotype machine, and two job presses. In addition to printing a labor weekly, Edward Alden, who was known as a very liberal man, allowed a union-supporting group, nicknamed "The Dynamiters Club" or sometimes "The Holyoke Labor College," to hold its meetings in his building. The group invited local college professors to come talk to them and held passionate debates on economic, political, and social issues. To get into meetings at 214 Maple Street, workers had to use a special knock and show five union labels on their clothing. One of the members of the union-activist group was Thomas F. Burns, an Irish immigrant, whose daughter was birth control advocate Anna B. Sullivan of the Textile Workers' Union.

The Great Depression

During the Depression, the parishioners of St. Jerome's were among the hardest hit. As they were the primary labor force in the paper industry, and a large part of the textile industry labor force, when those industries failed it was they who were first unemployed. The Catholic Mutual Benevolent Societies provided relief, and the William Whiting School opened a cafeteria where children could get hot soup and hot chocolate for a few cents. The school provided the food to all the children of the neighborhood, no matter where they attended school, as well as to the adults who could not cook for themselves or their children at lunchtime. Malnourished children received the soup and chocolate milk for free.

Modern Period (1941-)

Economic decline in Holyoke stemming from the Depression continued through the 20th century, as paper and textile manufacturers moved south where labor was cheaper. The moves left the mills' many workers without employment. By 1947, the mean annual income of each consumer in Holyoke's labor force was \$1,500, an amount that kept many families in poverty. This impoverished laboring class made up 62.8 percent of St. Jerome's membership, which meant that the church could not depend on its plate offering to sustain the parish and needed to think of other sources of income. The most popular means of raising money became gambling, so Bingo and other games were part of Church-sanctioned events. There was concern in the Catholic Church about gambling, but it was deemed suitable by the Diocese. Conflict, however, once again began between the Catholic and Protestant churches in town and lasted for a decade, as Protestants thoroughly rejected gambling for any purpose.

(continued)

Hampden Park Historic District
Name of Property

Hampden, MA
County and State

The population of Holyoke declined from 53,750 in 1940 to 39,880 in 2010. In between there was a period of relative stability in the 1950s as people leaving Puerto Rico's faltering economy came to Holyoke. Gambling profits and new church members allowed St. Jerome's Church to refurbish St. Patrick's Chapel in 1951. Ceilings and walls were repainted, new pews and woodwork installed. Artist and church decorator Filippo Santoro also repainted statues in the chapel. But the overall loss of population showed up in school enrollment, as well as in church members. In 1962, St. Jerome's High School merged with Holyoke Catholic High School and was re-named Holyoke Catholic High.

The William Whiting School served public school children until the city, faced with its own declining school population, donated it to the Catholic Church in 1969-1970 (Photograph 12). Whiting School then became part of the St. Jerome Church's complex of church, school, and convent buildings for the next 30 years. As part of St. Jerome's Parish, the school was known as Alumni Hall and was a part of Holyoke Catholic high school's campus providing classrooms, showers, and a library. St. Jerome's Parish closed its schools in 2002, and within a few years, the convents' occupants moved to other branches of their orders.

In 1962, Hampden Park was rededicated as Veterans Park and since that date several monuments have been added to it: a World War II obelisk, a Korean War shaft, and three slabs dedicated to the Vietnam War and its dead. As the city's central park space, Veterans Park is used by neighborhood residents and visitors to City Hall and the nearby commercial district (Photographs 1, 12).

During the 1970s and 1980s, a time of growing economic distress, Holyoke was prey to a large number of serious fires—any of which were caused by arson—in its old, unoccupied mills and commercial buildings. The Central Fire House was the principal force that fought these fires. A new firehouse, however, was needed by 2001, so Central Fire House had a last reunion of its fighters in that year, a new house was built on High Street, and Central was closed. It is now a multi-modal transportation center (Photograph 11).

St. Jerome's Church and Rectory continue to serve the parish, but the convents and schools have remained vacant. Today they are the subject of certified rehabilitation projects, which will convert them to affordable housing for the city's residents.

Archaeological Significance

Historic archaeological resources described above may contribute important information related to the role of public planning in a mid 19th-century industrial city and the role of public parks within a street grid that incorporated most of the social, cultural, and economic necessities of Holyoke's growing immigrant population. While standing structures in the district may contribute important information to many of the research areas indicated above, archaeological resources also have the potential to make important contributions to the district's significance.

After St. Jerome's Church was completed, bordering Hampden Park in 1858, educational facilities were needed for the district's growing Irish immigrant population. Additional historical research, combined with archaeological survey and testing, may locate structural evidence of the district's first two schools for girls and boys. The school for girls included an old wooden school located on the site of the Convent of the Sisters of Providence of Saint Vincent de Paul at 218 Hampden Street. The school for boys included the Saint Jerome's Institute (1871) built to the west of the church. Detailed mapping of structural evidence from each school, and related outbuildings, and detailed analysis of the contents of any occupational-related features (trash pits, privies, wells) may contribute important information related to the

(continued)

Hampden Park Historic District
Name of Property

Hampden, MA
County and State

educational facilities available to the residents of the district area. Important information may also be present related to educational standards for boys and girls, the influence of religion on education, and the architectural characteristics for each school.

Archaeological resources associated with the Harkins Home for Aged Women, located on the block of the School of Immaculate Conception, may contribute important information related to mid to late 19th-century geriatric care and how the district inhabitants and city cared for their elderly population. Structural evidence from the Emerald Fire House site may contribute important information related to the architectural characteristics of the firehouse and firefighting technologies available to a growing 19th-century industrial city.

(end)

Hampden Park Historic District
Name of Property

Hampden, MA
County and State

9. Major Bibliographical References

Bibliography (Cite the books, articles, and other sources used in preparing this form.)

Maps

Holyoke Falls Company, "Plan for New City," 1848.
City of Holyoke, Mass. map of 1870.
Bailey, H. H. Bird's Eye View of Holyoke, Mass. New York, 1877.
Sanborn Insurance Maps, Holyoke, 1895, 1889, 1884, 1915, 1949.
Stoner, J. J. Bird's Eye View of the 1881 City of Holyoke and Village of South Hadley Falls, Massachusetts, Madison, Wisconsin, 1881.

Primary Sources

U.S. Federal Censuses 1850-1930.
Holyoke Street Directories, 1900-1935.

Secondary Sources

Czitrom, Daniel. The Hidden Holyoke: An Historical Introduction 1870-1940. Typescript, Mount Holyoke College.

Dodge, L. Mara. "Anna B. Sullivan, 1903-1983: The Formative Years of a Textile Mill Union Organizer," Historical Journal of Massachusetts, Summer 2008, vol. 36.

Everts, Louis. History of the Connecticut Valley in Massachusetts, 1879.

Green, Constance McLaughlin. Holyoke, Massachusetts: A Case History of the Industrial Revolution in America. New Haven, 1939

Harper, Wyatt E. The Story of Holyoke. Holyoke MA Centennial Committee, 1973.

Holyoke Daily Transcript and Telegram, May 14, 1931.

Holyoke Daily Transcript. "Industrial Edition: Great Industrial Establishments of the Paper City Described and Illustrated." Holyoke, ca. 1897.

Holyoke Daily Transcript, Feb. 15, 1898. March 25, 1911, August 20, 1963; May 9, 1931;

"History is Celebrated at 150th Jubilee", Holyoke Plus, Holyoke, July 7, 2004.

<http://imagemuseum.smugmug.com/>, Holyoke gallery.

Massachusetts Historical Commission. Reconnaissance Reports, "Holyoke", 1976.

Osgood, G. C. Story of the Holyoke Churches. Holyoke, 1890.

Pomerleau, Fr. Bill. Sketches of a Church: A Brief History of the Diocese of Springfield, Massachusetts. Strasbourg, France.

Riley, John L. "Holyoke Schools." Holyoke Daily Transcript, September 17, 1927.

(continued)

Hampden Park Historic District
Name of Property

Hampden, MA
County and State

Shea, Michael (ed.). A Century of Catholicism in Western Massachusetts, Springfield, 1931.

Springfield Republican, March 17, 1934.

St. Jerome's Parish. Diamond Jubilee. Holyoke, 1931.

_____. A Brief History of St. Jerome's Parish. Holyoke, 1954.

Underwood, Kenneth Wilson. Protestant and Catholic Religious and Social Interactions in an Industrial Community, Westport Connecticut, 1957.

Vertical Files, "Parks-Veterans Park." Holyoke Public Library History Room at Holyoke Community College.

Vertical Files: "Holyoke Fire Department." Holyoke Public Library History Room at Holyoke Community College.

Previous documentation on file (NPS): HPCA # 25,445 ; 25,448

- preliminary determination of individual listing (36 CFR 67 has been requested)
- previously listed in the National Register
- previously determined eligible by the National Register
- designated a National Historic Landmark
- recorded by Historic American Buildings Survey # _____
- recorded by Historic American Engineering Record # _____
- recorded by Historic American Landscape Survey # _____

Primary location of additional data:

- State Historic Preservation Office
 - Other State agency
 - Federal agency
 - Local government
 - University
 - Other
- Name of repository: _____

Historic Resources Survey Number (if assigned):

MHC # HLY. 123, 125, 127,169, 240,367, 900, 902, 1216, 1217

10. Geographical Data

Acreage of Property Ca. 5 acres
(Do not include previously listed resource acreage.)

UTM References

(Place additional UTM references on a continuation sheet.)

1 _____
Zone Easting Northing

3 _____
Zone Easting Northing

2 _____
Zone Easting Northing

4 _____
Zone Easting Northing

Lat/Lon (from Google maps)

- | | | | | | |
|--------------|------------|--------------|------------|--------------|------------|
| 1. 42.210195 | -72.608564 | 2. 42.209480 | -72.607104 | 3. 42.207668 | -72.608403 |
| 4. 42.209051 | -72.609669 | 5. 42.208463 | -72.608279 | | |

Verbal Boundary Description (Describe the boundaries of the property.)

Please see attached Historic District Boundary Assessors Map.

Hampden Park Historic District
Name of Property

Hampden, MA
County and State

Boundary Justification (Explain why the boundaries were selected.)

The boundaries were selected to include Hampden Park, the concentration of historic buildings that surround the park, and the properties associated with St. Jerome's Parish. Boundaries were drawn to exclude vacant lots at the southwest corner, and to exclude buildings on the south side of the park that were already listed in the National Register (a U.S. Post Office) or that date after the period of significance of the district. Commercial properties at the northeast corner were excluded for their lack of relationship historically to the district and their later dates.

11. Form Prepared By

name/title Bonnie Parsons, Pioneer Valley Planning Commission with Betsy Friedberg, NR Director, MHC
organization Massachusetts Historical Commission Date July 2012
street & number 220 Morrissey Boulevard telephone (617) 727-8470
city or town Boston state MA zip code 02125
e-mail _____

Additional Documentation

Submit the following items with the completed form:

- **Maps:** A **USGS map** (7.5 or 15 minute series) indicating the property's location.
A **Sketch map** for historic districts and properties having large acreage or numerous resources. Key all photographs to this map.
- **Continuation Sheets**
- **Additional items:** (Check with the SHPO or FPO for any additional items.)

Hampden Park Historic District
Name of Property

Hampden, MA
County and State

Photographs:

Submit clear and descriptive photographs. The size of each image must be 1600x1200 pixels at 300 ppi (pixels per inch) or larger. Key all photographs to the sketch map.

Name of Property: Hampden Park HD

City or Vicinity: Holyoke

County: Hampden

State: MA

Photographer: Bonnie Parsons, PVPC

Date Photographed: June 2011

Description of Photograph(s) and number:

1. Hampden Park
2. Civil War Monument
3. St Jerome's Catholic Church
4. St Patrick's Chapel
5. Convent, Sisters of Notre Dame
6. St Jerome's Rectory
7. Immaculate Conception School (left), Sister of Notre Dame Convent (right)
8. Convent, Sister of Providence of St Vincent dePaul
9. Perry House
10. Whiting School
11. Central Firehouse
12. View from Hampden Park

Property Owner:

(Complete this item at the request of the SHPO or FPO.)

name Multiple

street & number _____ telephone _____

city or town _____ state _____ zip code _____

Paperwork Reduction Act Statement: This information is being collected for applications to the National Register of Historic Places to nominate properties for listing or determine eligibility for listing, to list properties, and to amend existing listings. Response to this request is required to obtain a benefit in accordance with the National Historic Preservation Act, as amended (16 U.S.C. 460 et seq.).

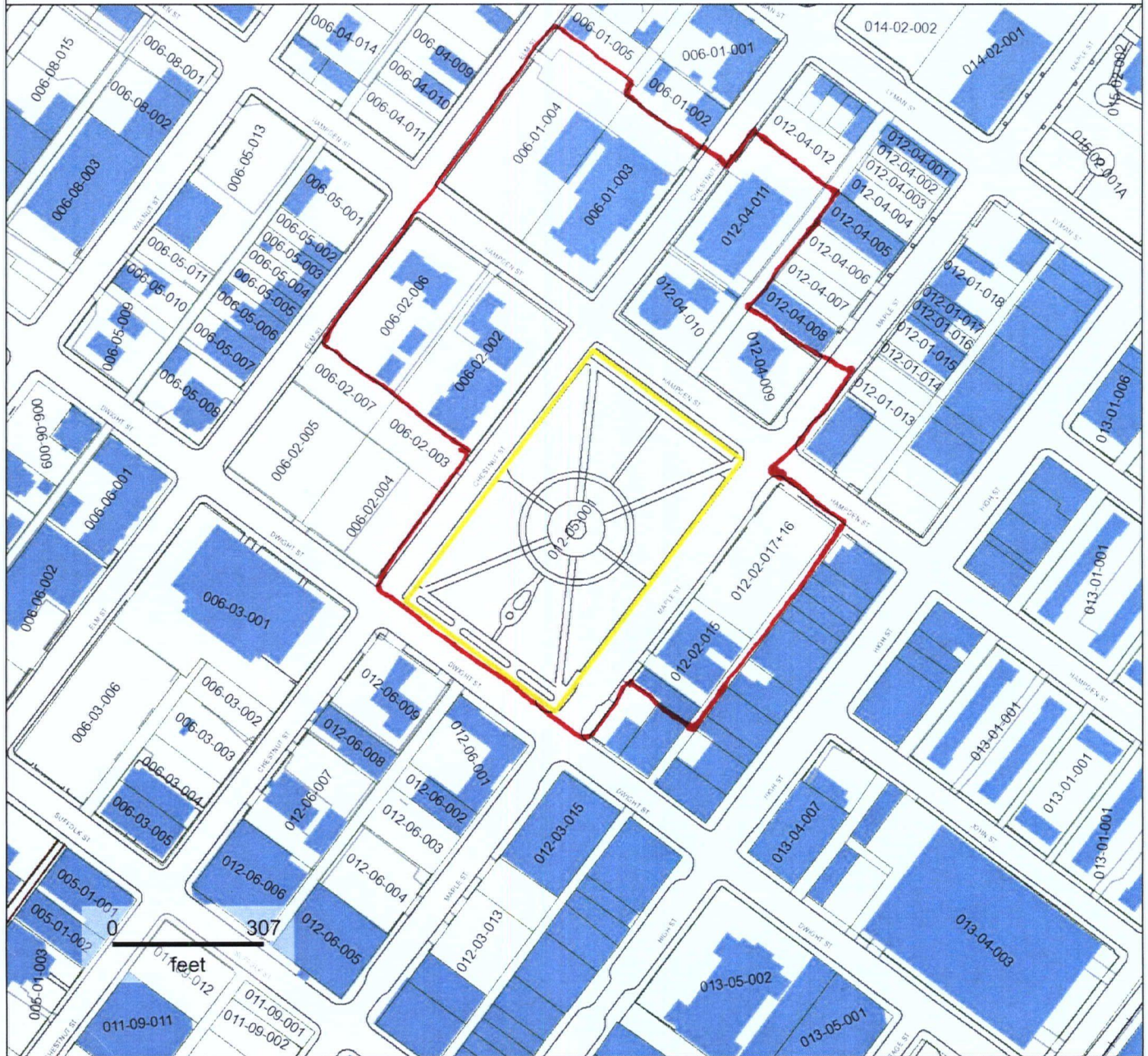
Estimated Burden Statement: Public reporting burden for this form is estimated to average 18 hours per response including time for reviewing instructions, gathering and maintaining data, and completing and reviewing the form. Direct comments regarding this burden estimate or any aspect of this form to the Office of Planning and Performance Management, U.S. Dept. of the Interior, 1849 C. Street, NW, Washington, DC.

HAMPDEN PARK HISTORIC DISTRICT
HOLYOKE (HAMPDEN COUNTY), MA

Assessors #	MHC #	Address	Historic Name	Date	Resource	C/NC
012-04-011	HLY.367	70 Chestnut Street	Whiting School	1910	Building	C
006-02-002	HLY.1216	85 Chestnut Street	Convent of N.D.de Lourdes	1869	Building	C
006-02-002	HLY. 1217	91 Chestnut Street	School of Immaculate Concep.	1883	Building	C
006-02-006		218 Hampden Street	temporary classroom	ca. 1980	Building	NC
06-02-006		218 Hampden Street	temporary classroom	ca. 1980	Building	NC
012-05-001	HLY.902	Hampden Street	Hampden Park	1848-	Site	C
012-05-001		Hampden Street	cast iron fence	1876	Object	C
012-05-001		Hampden Street	granite curbing	1876	Object	C
012-05-001	HLY.900	Hampden Street	Civil War Monument	1876	Object	C
012-05-001	HLY.947	Hampden Street	World War II	ca. 1962	Object	C
012-05-001	HLY.948	Hampden Street	Korean War Memorial	ca. 1962	Object	C
012-05-001	HLY.949	Hampden Street	Vietnam War Memorial	ca. 1970	Object	NC
012-05-001	HLY.950	Hampden Street	Flagpole	ca. 1960	Object	C
012-04-009	HLY.1440	145 Hampden Street	Repair Garage	1965	Building	NC
012-04-010	HLY.125	169 Hampden Street	Rectory	1879	Building	C
012-04-010		169 Hampden Street	cast iron fence	1879	Object	C
006-01-003&004	HLY.123	181 Hampden Street	St. Jerome's Church	1858	Building	C
006-01-03	HLY.951	181 Hampden Street	Rev. O' Callaghan Memorial	n.d.	Object	C
006-02-006	HLY. 127	218 Hampden Street	Sisters of Providence	1886	Building	C
012-02-015	HLY.240	206 Maple Street	Central Fire Station	1914	Building	C
012-02-017 + 16	HLY.1441	206 Maple Street	Transportation Center	2010	Structure	NC
012-02-014	HLY.169	214 Maple Street	George Perry House	pre-1873	Building	C

Resource Type	Contributing	Noncontributing
Buildings	8	3
Objects	8	1
Structures	0	1
Sites	1	0
Total	17	5

Parcel Map



Property Information

Property ID 012-05-001
 Location HAMPDEN ST

**MAP FOR REFERENCE ONLY
 NOT A LEGAL DOCUMENT**

Disclaimer: The information displayed on this or any other map produced by The City of Holyoke is for reference purposes only. The City of Holyoke does not guarantee the accuracy of the data. Users are responsible for determining the suitability for individual needs. All information is from the City of Holyoke Geographic Information System (GIS) database.

- Train Lines
- Infrastructure
- Bridges
- Roads
- Dirt roads
- Lots
- Fences & Walls
- Highways
- Buildings
- City Ponds
- Town Boundary



UNITED STATES DEPARTMENT OF THE INTERIOR
NATIONAL PARK SERVICE

NATIONAL REGISTER OF HISTORIC PLACES
EVALUATION/RETURN SHEET

REQUESTED ACTION: NOMINATION

PROPERTY NAME: Hampden Park Historic District

MULTIPLE
NAME:

STATE & COUNTY: MASSACHUSETTS, Hampden

DATE RECEIVED: 7/27/12 DATE OF PENDING LIST: 8/24/12
DATE OF 16TH DAY: 9/10/12 DATE OF 45TH DAY: 9/12/12
DATE OF WEEKLY LIST:

REFERENCE NUMBER: 12000781

REASONS FOR REVIEW:

APPEAL: N DATA PROBLEM: N LANDSCAPE: N LESS THAN 50 YEARS: N
OTHER: N PDIL: N PERIOD: N PROGRAM UNAPPROVED: N
REQUEST: N SAMPLE: N SLR DRAFT: N NATIONAL: N

COMMENT WAIVER: N

ACCEPT RETURN REJECT 9.10.12 DATE

ABSTRACT/SUMMARY COMMENTS:

Entered in
The National Register
of
Historic Places

RECOM./CRITERIA _____

REVIEWER _____ DISCIPLINE _____

TELEPHONE _____ DATE _____

DOCUMENTATION see attached comments Y/N see attached SLR Y/N

If a nomination is returned to the nominating authority, the nomination is no longer under consideration by the NPS.



MA-HOLYOKE(HAMPDENCOUNTY)-HAMPDENPARK 01.tif

Hampden Park
Holyoke

Hampden, MA.

Bonnie Parsons

June, 2011

View to North

log 12



IN MEMORY OF
OUR VOLUNTEERS
WHO DIED
FOR THE UNION
1861-1865

MA - HOLYOKE (HAMPTON COUNTY) - HAMPTONPK02.tif

Hampton Park

Holyoke

Hampton, MA

- Bonnie Parsons

June, 2011

View to Northwest

2812



Saint Jerome
Church

Saint Patrick's Chapel

1000 W. 10th St.
St. Paul, MN 55102
Tel: 651-261-1111

MA - HOLYOKE (HAMPDEN COUNTY) - HAMPDEN PICO 3. 1/7

St. Jerome's R.C. Church

Holyoke

Hampden, MA

Bonnie Parsons

August, 2011

V. w. to northeast

3 of 12



Saint Jerome
Church
Rural Parish Church

WEEK
SERVICES ON SATURDAY
EVENING AT 7:00 PM
AND 8:00 PM

MA - HOLYOKE (HAMPDEN COUNTY) - HAMPDEN PK04. tif

St. Patrick's Chapel
Holyoke
Hampden, MA
Bonnie Parsons
August, 2011
View to north
4 of 12



MA - HOLYOKE (HAMPDEN COUNTY) - HAMPDEN PICO5. tif

Convent of Sisters of Notre Dame de Lourdes
Holyoke
Hampden, MA
Bonnie Parsons
June, 2011
V. w to west
5 of 12



MA_HOLYOKE (HAMPDEN COUNTY) - HAMPDEN PK06.tif

St. Jerome's Rectory

Holyoke

Hampden, MA

Bonnie Parsons

August, 2011

View to NE.

6 of 12



MA-HOLYOKE (HAMPDEN COUNTY)-HAMPDEN PK 07.tif

School of Immaculate Conception of Notre Dame
de Lourdes (left) Convent of Sisters of Notre
Dame de Lourdes (right)

Holyoke

Hampden, Ma.

Bonnie Parsons

June, 2011

U-cw to SW

7 of 12



MA_HOLYOKE (HAMPDEN COUNTY) - HAMPDEN PK 08. tif

Convent of Sisters of Providence of St. Vincent de Paul
Holyoke

Hampden, MA

Lucas Walsh

March, 2011

View to South

8 of 12



214

10

10

MA - HOLYOKE (HAMPDEN COUNTY) - HAMPDEN PK 09. tif

^{+ Laura}
George H. Perry House

Holyoke

Hampden, MA

Bonnie Parsons

August, 2011

View to East

9 of 12



MA - HOLYOKE (HAMPDEN COUNTY) - HAMPDEN PK 10. tif

William Whiting School
Holyoke
Hampden, MA
Bonnie Parsons
June, 2011
View to SE
10 A 12



HOLYOKE TRANSPORTATION CENTER

PIMA

Embrace Education

YIELD
HERE
TO

MA - HOLYOKE (HAMPDEN COUNTY) - HAMPDEN PK 11. tif

Central Firehouse
Holyoke,
Hampden, MA
Bonnie Parsons
View to NE
11 of 12



MA - HOLYOKE (HAMPDEN COUNTY) - HAMPDEN PK 12. tif

St. Jerome's Rectory (left) East elevation of
Whiting School (right) Viewed from
Hampden Park

Holyoke

Hampden, MA

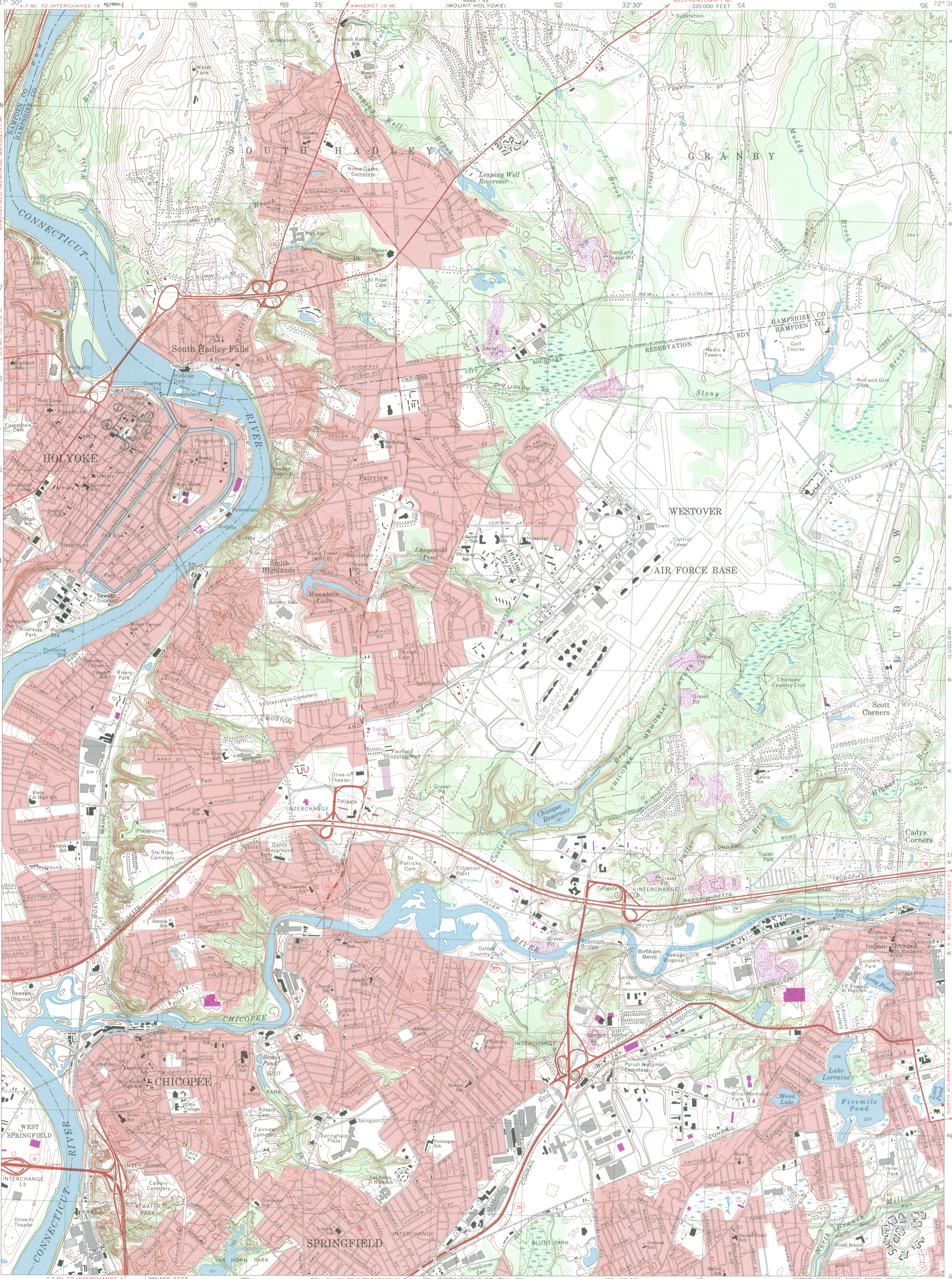
Bonnie Parsons

August, 2011

12 of 12

HAMPDEN PARK HD
HOLYOKE (HAMPDEN) MA

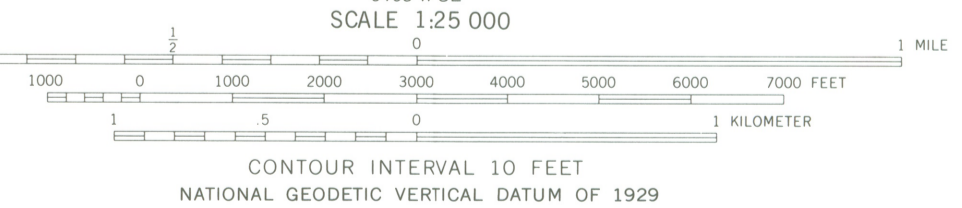
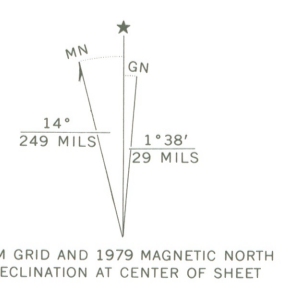
- 1. 42.210195
- 72.608564
- 2. 42.209480
- 72.607104
- 3. 42.207668
- 72.608403
- 4. 42.209051
- 72.609669
- 5. 42.208463
- 72.608279



To convert feet to meters
multiply by 3048

To convert meters to feet
multiply by 3.2808

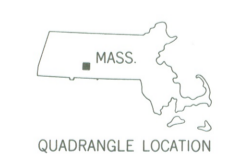
Mapped, edited, and published by the Geological Survey
Control by USGS, US&GS, and Massachusetts Geodetic Survey
Topography by planetable surveys 1933. Revised from
aerial photographs taken 1971. Field checked 1972
Polyconic projection. 1927 North American datum
10,000-foot grid based on Massachusetts coordinate system,
mainland zone
1000-meter Universal Transverse Mercator grid,
zone 18
Red tint indicates areas in which only landmark buildings are shown
There may be private inholdings within the boundaries
of the National or State reservations shown on this map
Revisions shown in purple compiled in cooperation with the State of
Massachusetts agencies from aerial photographs taken 1975 and other
source data. This information not field checked. Map edited 1979



CONTOUR INTERVAL 10 FEET
NATIONAL GEODETIC VERTICAL DATUM OF 1929

ROAD CLASSIFICATION

Primary highway, hard surface	Light-duty road, hard or improved surface
Secondary highway, hard surface	Unimproved road
Interstate Route	U. S. Route
	State Route



SPRINGFIELD NORTH, MASS.
N4207.5-W7230/7.5

1972
PHOTOREVISED 1979
AMS 6468 II NE-SERIES V814

HAMPDEN PARK HD
HAMPDEN CO
HOLYOKE MA



HAMPDEN PARK HD
HOLYOKE (HAMPDEN) MA



Mayor Alex B. Morse

City of Holyoke

Holyoke Historical Commission

RECEIVED

MAY 24 2012

MASS. HIST. COMM

May 22, 2012

Betsy Friedberg, Director
National Register of Historic Places
Massachusetts Historic Commission
220 Morrissey Blvd.
Boston, MA. 02125

Re: Hampden Park District, Holyoke, MA. National Register Nomination

The Holyoke Historic Commission is unanimously in favor of the proposed Hampden Park District in the National Register of Historic Places. The Commission, some of our City Councilors and residents are eager to see improvement in some of the boarded up areas.

In fact, we may make an addition to the district, however we may do that at a latter time. We have a study committee researching a local historic district near that area on Lyman Street. That part of Holyoke still has extant buildings, objects and structures from the earliest days of development circa 1847.

Missing in the letter from Ms. Simon are the exact boundaries and buildings of the proposed district:

The Whiting School, Holyoke Catholic Complex, Hampden Park and its contents, Civil War, WW II and Korean, St. Jerome's Church, rectory and Memorial, Central Fire Station currently called the Transportation Center and the George Perry House...a total of 17 contributing pieces and 5 non-contributing objects.

Please email a draft copy of the National Register nomination for the proposed district to the liv1946@gmail.com or to Holyoke Historical Commission 238 Cabot St. Holyoke, MA. 01040.

Thank you,

Olivia Mausel, Chair for the
Holyoke Historical Commission

*I have the draft from Bonnie
thanks*



MAYOR ALEX B. MORSE

CITY OF HOLYOKE

RECEIVED

MAY 25 2012

MASS. HIST. COMM

May 24, 2012

Betsy Friedberg, Director of National Register
Massachusetts Historical Commission
220 Morrissey Boulevard
Boston MA 02125-3314

Re: Designation of Hampden (Veterans') Park Historic District, Holyoke MA

Dear Ms. Friedberg:

I am writing in support of the nomination of Hampden (Veterans') Park Historic District to the National Register of Historic Places.

The Hampden (Veterans') Park Historic District is located in the downtown urban core and encompasses local historic landmarks including Veterans' Park and the former Holyoke Catholic School Campus. The proposed district lies at the heart of this Gateway City.

The City of Holyoke has been making significant investments in its downtown core including:

- Renovations to Veterans' Park (\$1.4 million with state assistance);
- The Holyoke Multimodal Transportation Center offering local and regional transportation as well as serving as Holyoke's hub for adult basic education;
- A new Senior Center at Pine and Beech Streets;
- An expanded and renovated Public Library at Maple Street; and
- Construction of the CanalWalk (Phase I Completed).

The listing of the Hampden Park Historic District on the National Register of Historic Places provides financial incentives for private investment in Holyoke's downtown core. Weld Management, the current owner of the former Holyoke Catholic School Campus, plans historically sensitive renovation and rehabilitation of the campus to provide housing. The addition of quality housing stock in Holyoke's downtown will facilitate the City's economic rebound.

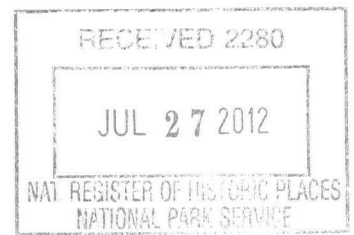
As Mayor, I am particularly focused on the development of the City's creative economy and capitalizing on its cultural and historic resources for revitalization. This nomination further supports my overall direction for the City of Holyoke.

Thank you for your consideration. Please do not hesitate to contact me if you have any questions.

Sincerely,

Alex B. Morse
Mayor

Cc: Office for Community Development; Bonnie Parsons, PVPC; Historical Commission



The Commonwealth of Massachusetts
William Francis Galvin, Secretary of the Commonwealth
Massachusetts Historical Commission

July 19, 2012

Mr. J. Paul Loether
National Register of Historic Places
Department of the Interior
National Park Service
1201 Eye Street, NW, 8th floor
Washington, DC 20005

Dear Mr. Loether:

Enclosed please find the following nomination form:

Hampden Park HD, Holyoke (Hampden), MA

The nomination has been voted eligible by the State Review Board and has been signed by the State Historic Preservation Officer. The owners of the properties were notified of pending State Review Board consideration 30 to 45 days before the meeting and were afforded the opportunity to comment.

Two letters of support were received.

Sincerely,

A handwritten signature in cursive script that reads "Betsy Friedberg".

Betsy Friedberg
National Register Director
Massachusetts Historical Commission

enclosure

cc: Bonnie Parsons, Elizabeth Rairigh, PVPC, consultant
Mayor Alex Morse, City of Holyoke
Olivia Mausel, Holyoke Historical Commission
Chair, Holyoke Planning Board