

RECEIVED

JAN 06 1994

United States Department of the Interior
National Park Service

National Register of Historic Places
Registration Form

NATIONAL
REGISTER

This form is for use in nominating or requesting determinations for individual properties and districts. See instructions in *How to Complete the National Register of Historic Places Registration Form* (National Register Bulletin 16A). Complete each item by marking "x" in the appropriate box or by entering the information requested. If an item does not apply to the property being documented, enter "N/A" for "not applicable." For functions, architectural classification, materials, and areas of significance, enter only categories and subcategories from the instructions. Place additional entries and narrative items on continuation sheets (NPS Form 10-900a). Use a typewriter, word processor, or computer, to complete all items.

1. Name of Property

historic name Kamp Store

other names/site number _____

2. Location

street & number Northeast corner of Oak & Broadway not for publication

city or town Kampsville vicinity

state Illinois code IL county Calhoun code 013 zip code 62053

3. State/Federal Agency Certification

As the designated authority under the National Historic Preservation Act, as amended, I hereby certify that this nomination request for determination of eligibility meets the documentation standards for registering properties in the National Register of Historic Places and meets the procedural and professional requirements set forth in 36 CFR Part 60. In my opinion, the property meets does not meet the National Register criteria. I recommend that this property be considered significant nationally statewide locally. (See continuation sheet for additional comments.)

William L. Gabel / SAHP 12-20-93
Signature of certifying official/Title Date

Illinois Historic Preservation Agency
State of Federal agency and bureau

In my opinion, the property meets does not meet the National Register criteria. (See continuation sheet for additional comments.)

Signature of certifying official/Title Date

State or Federal agency and bureau

4. National Park Service Certification

I hereby certify that the property is:

- entered in the National Register. See continuation sheet.
- determined eligible for the National Register. See continuation sheet.
- determined not eligible for the National Register.
- removed from the National Register.
- other, (explain): _____

W. M. Dapley Entered in the National Register 2/14/94
Signature of the Keeper Date of Action

Kamp Store
Name of Property

Calhoun, Illinois
County and State

5. Classification

Ownership of Property

(Check as many boxes as apply)

- private
- public-local
- public-State
- public-Federal

Category of Property

(Check only one box)

- building(s)
- district
- site
- structure
- object

Number of Resources within Property

(Do not include previously listed resources in the count.)

Contributing	Noncontributing	
<u>2</u>	<u>0</u>	buildings
<u>0</u>	<u>0</u>	sites
<u>0</u>	<u>0</u>	structures
<u>0</u>	<u>0</u>	objects
<u>2</u>	<u>0</u>	Total

Name of related multiple property listing

(Enter "N/A" if property is not part of a multiple property listing.)

N/A

Number of contributing resources previously listed in the National Register

N/A

6. Function or Use

Historic Functions

(Enter categories from instructions)

Commerce/Department store
Domestic/Single dwelling

Current Functions

(Enter categories from instructions)

Education/Education-related housing
Education/Research facility

7. Description

Architectural Classification

(Enter categories from instructions)

Commercial Style

Materials

(Enter categories from instructions)

foundation Limestone
walls Weatherboard

roof Asbestos
other Tin

Narrative Description

(Describe the historic and current condition of the property on one or more continuation sheets.)

United States Department of the Interior
National Park ServiceNational Register of Historic Places
Continuation SheetSection number 7 Page 1

Kamp Store

7. Narrative Description

The Kamp Store is a two story commercial building with 40 ft. x 70 ft. exterior dimensions built in 1902. The building sits on the northeast corner of Oak and Broadway in Kampsville, Illinois and is of wood frame construction. The basement exhibits an 8" square solid wood post and beam structural system. The exterior foundation walls are rubble limestone, approximately 8" to 12" thick. The limestone walls are in good condition. The walls are plumb and true and do not appear to suffer any deformations or scouring from recent flooding.

The building has a three story false metal front and an asphalt shingled gable roof with a hipped roof at the rear. The false front is covered with ornate metalwork that combines a variety of decorative styles popular at the turn-of-the century. At the attic or third floor level a broad and partially false front mimics stone construction. The second floor level is punctuated with windows that are flanked by thin Doric pilasters and scrollwork panels. Capping the front facade was a semicircular metalwork crown inscribed with the lettering "1902" and "J.A. Kamp" picked out in burgundy and gold paint. Ornate finials flanked the crown at the corners of the facade cornice. The decorative crown and finials are no longer extant, however, a portion of the lettering has survived. At the street level a tall wall of glass exposes the interior of the store and provided display space for store goods.

The street level facade has a double wood door with large single panes of glass and a large transom at the northwest corner. This doorway leads to a hall and staircase that services the second story. Six large six-pane windows run the width of the street level facade between the two corner entrances. The corner front entry is a wide wood and glass door that provided entrance into the store.

On the second story of the front facade are a pair of one-over-one wood windows, a single larger one-over-over one window and another pair of one-over-one windows. The attic level has a pair of two-over-two windows.

Along the south elevation is a large tall fixed window, next to the front entry and two smaller rectangular windows along the first story. The second story has two pairs of one-over-one windows and

United States Department of the Interior
National Park Service

National Register of Historic Places
Continuation Sheet

Section number 7 Page 2

Kamp Store

three, single one-over-one windows. Along the gable roof is a small gable roofed dormer with with a two-over-two window.

The first story of the rear elevation has a two-over-two window, a centered exterior door, and another two-over-two window. The rear door provided a freight entrance to the store. Evidence of a wooden ramp that connected the main building to a small storage shed remains along this side. There is also an outside basement entrance along the foundation.

On the second floor of the rear elevation are four, two-over-two windows. In the gable end of the attic level is a small two-over-two window.

The north elevation of the first story includes a small service door and an open wooden stairway to the upper level. The outside stair provides access to a covered balcony that extends approximately one-half the length of the building. A door, three, two-over-two windows, and another door are along the second story balcony. A pair of one-over-one windows are located towards the front of the building on the second story.

There is a brick chimney and a small gabled roof dormer with a two-over-two window along the attic level on the north side.

A lean-to corrugated metal awning extends from the first floor ceiling line over the sidewalk. Originally, a graceful canvas awning which was stiped in burgundy, tan, and green shaded the front windows and entrance. Although the metal awning is sturdy, it is rusty and renovation plans include its replacement with an awning similar to the original.

The north, east, and south sides of the building were covered with aluminum siding until the fall of 1993. The aluminum siding was removed exposing the original wood weatherboard siding.

The first floor interior has four slender wooden columns approximately 15 ft. on center, supporting a main beam for the floor framing above. The first floor is basically one large room (32' x 70') that was devoted to a large store area fronted by a wall of glass. The area also had wood and glass display cabinets that are no longer extant. The ceiling is approximately 16 feet high and is

United States Department of the Interior
National Park Service

**National Register of Historic Places
Continuation Sheet**

Section number 7 Page 3

Kamp Store

covered with ornate pressed metal panels that are original to the building. The floor is made of 3 1/2" tongue and groove wood flooring on top of the joist. The plastered walls are painted. A hallway extends along the northern side of the main floor that provides a private front entrance to the second floor and connects to the main room on the first floor. Renovation of the interior has exposed decorative stencilling that was applied to the original plaster in the stairway and upper hall areas. A long wide wooden stairway leads to the upper floor. An ornate newel post supports the handrail.

The second floor was originally divided into several large spacious rooms that the Kamp family used for their home. Renovation in 1992 included the addition of a second hallway that provided greater access to the dormitory rooms. The walls are plaster and wood lath construction. Some ceiling plaster has been replaced with dry wall to repair previous damage. The wood floors and millwork are in good condition. Plumbing facilities were added approximately in 1945 and consist of a tub in one space and a water closet and a lavatory in another. The water and sewer lines drop through the first floor ceiling on the inside at the rear of the building. This installation damaged several of the decorative sheet metal ceiling panels in the main room of the first floor.

A storage shed, or warehouse, is located immediately behind the Kamp Store on the eastern boundary of the building lot. The c. 1900s wood frame building is 40' long (N-S) by 20' wide (E-W). It is 19 feet in height. The building sets on a foundation of twelve concrete pillars that are 15" in height.

Wooden freight doors, that are hinged and swing inward, are flanked by one-over-one double-hung windows on both the east and west elevations. The north elevation has no openings, but the south elevation has two, one-over-one windows and a six-over-six window near the peak of the roof. The gabled roof is covered with asphalt shingles. The storage shed/warehouse is a contributing building.

8. Statement of Significance

Applicable National Register Criteria

(Mark "x" in one or more boxes for the criteria qualifying the property for National Register listing.)

- X A Property is associated with events that have made a significant contribution to the broad patterns of our history.
B Property is associated with the lives of persons significant in our past.
C Property embodies the distinctive characteristics of a type, period, or method of construction or represents the work of a master, or possesses high artistic values, or represents a significant and distinguishable entity whose components lack individual distinction.
D Property has yielded, or is likely to yield, information important in prehistory or history.

Criteria Considerations

(Mark "x" in all the boxes that apply.)

Property is:

- A owned by a religious institution or used for religious purposes.
B removed from its original location.
C a birthplace or grave.
D a cemetery.
E a reconstructed building, object, or structure.
F a commemorative property.
G less than 50 years of age or achieved significance within the past 50 years.

Narrative Statement of Significance

(Explain the significance of the property on one or more continuation sheets.)

9. Major Bibliographical References

Bibliography

(Cite the books, articles, and other sources used in preparing this form on one or more continuation sheets.)

Previous documentation on file (NPS):

- preliminary determination of individual listing (36 CFR 67) has been requested
previously listed in the National Register
previously determined eligible by the National Register
designated a National Historic Landmark
recorded by Historic American Buildings Survey #
recorded by Historic American Engineering Record #

Areas of Significance

(Enter categories from instructions)

Commerce

Period of Significance

1902-1943

Significant Dates

1902

Significant Person

(Complete if Criterion B is marked above)

N/A

Cultural Affiliation

N/A

Architect/Builder

Unknown

Primary location of additional data:

- State Historic Preservation Office
Other State agency
Federal agency
Local government
University
Other

Name of repository:

Kamp Store
Name of Property

Calhoun, Illinois
County and State

10. Geographical Data

Acreage of Property less than one

UTM References

(Place additional UTM references on a continuation sheet.)

1

1	5	7	0	6	0	8	0	4	3	5	2	3	9	0
Zone			Easting					Northing						

3

Zone			Easting					Northing						

See continuation sheet

Verbal Boundary Description

(Describe the boundaries of the property on a continuation sheet.)

Boundary Justification

(Explain why the boundaries were selected on a continuation sheet.)

11. Form Prepared By

name/title Cynthia Sutton

organization Center for American Archeology date October 8, 1993

street & number P.O. Box 366 telephone 618-653-4316

city or town Kampsville state IL zip code 62053

Additional Documentation

Submit the following items with the completed form:

Continuation Sheets

Maps

A **USGS map** (7.5 or 15 minute series) indicating the property's location.

A **Sketch map** for historic districts and properties having large acreage or numerous resources.

Photographs

Representative **black and white photographs** of the property.

Additional items

(Check with the SHPO or FPO for any additional items)

Property Owner

(Complete this item at the request of SHPO or FPO.)

name Center for American Archeology

street & number P.O. Box 366 telephone 618-653-4316

city or town Kampsville state IL zip code 62053

Paperwork Reduction Act Statement: This information is being collected for applications to the National Register of Historic Places to nominate properties for listing or determine eligibility for listing, to list properties, and to amend existing listings. Response to this request is required to obtain a benefit in accordance with the National Historic Preservation Act, as amended (16 U.S.C. 470 *et seq.*).

Estimated Burden Statement: Public reporting burden for this form is estimated to average 18.1 hours per response including time for reviewing instructions, gathering and maintaining data, and completing and reviewing the form. Direct comments regarding this burden estimate or any aspect of this form to the Chief, Administrative Services Division, National Park Service, P.O. Box 37127, Washington, DC 20013-7127; and the Office of Management and Budget, Paperwork Reductions Projects (1024-0018), Washington, DC 20503.

United States Department of the Interior
National Park ServiceNational Register of Historic Places
Continuation SheetSection number 8 Page 4

Kamp Store

8. Narrative Statement of Significance

The history of the Kamp Store and its significance to the community it served are an integral part of the commercial development of Kampsville and qualifies the store for listing in the National Register of Historic Places under Criterion A for commerce. Erected in 1902 by the village's founding family, the Kamp Store remains as a visual reminder of the flourish of economic prosperity enjoyed by Calhoun County residents at a time when whistles heralded the arrival of steamboats at the Kampsville landing and families depended on the local general store to supply everything from sewing needles to threshing machines. The period of significance is from 1902, the year the store was built to 1943, the fifty-year cutoff for the National Register.

Calhoun County lies in west central Illinois, bounded on the north by Pike County, on the east by the Illinois River, and on the south and west by the Mississippi River. The county is approximately 37 miles long, but averages only seven miles in width. Kampsville is located ten miles north of the county seat, Hardin, directly on the west bank of the Illinois River. The landing at Kampsville was used by generations of river travelers, dating back to prehistory. Nineteenth century settlers chose the site for one of the earliest post offices in the county and named it Farrow Town after the original owner of the land. A German immigrant, Michael A. Kamp, arrived in Calhoun County in 1863 at Silver Creek, north of present-day Kampsville. Kamp prospered as a farmer and merchant at his general store/post office on Silver Creek. On September 25, 1869 Kamp purchased all lots and land in Farrow Town for the sum of \$6,000¹ and became one of the area's most influential men. The village was soon renamed Kampsville in his honor. A former Civil War officer, Captain Kamp was active in village government and civic affairs. He served as county commissioner, justice of the peace, and as the first president of the Bank of Calhoun County. He opened a general store and post office soon after acquiring land from William Farrow.² As the years progressed he sold building lots, owned a cider mill, acted as a grain dealer and farmer while he continued his interest in mercantile ventures.

United States Department of the Interior
National Park ServiceNational Register of Historic Places
Continuation SheetSection number 8 Page 5

Kamp Store

Four of Captain Kamp's children were active in local commerce. William managed the store on Silver Creek, Frank was engaged in the lumber business, and his daughter, Kate was a popular storekeeper in Kampsville during the 1890s. A third son, Joseph A., entered the business world with his father's assistance in 1893.³ An entry from the Captain's diary noted the event: "15 May 1893 - I bought the merchandise off B. Kinscherff for \$676.00 and went to St. Louis - bought a complete stock and filled up the store and Josie A. Kamp took charge of the store on June 12th."⁴

Kampsville in the 1890s was a thriving village. A quote from 1894 captures the optimism of the region. "Kampsville people believe and not without reason, that their town will soon become the metropolis of Calhoun County."⁵ Steam-powered boats linked the secluded peninsula of Calhoun County to goods and services from growing urban centers along the Mississippi and Illinois rivers. Lumber, cordwood staves, fish, and farm produce were shipped from the Kampsville landing to markets in St. Louis and New Orleans. An indication of the economic health of the landing was the number and variety of businesses owned by county residents. The families of Hayn, Heidenreicht, Brenn, Reiss, Oberjohann, Getz, Seibermann, Hartmann, Rose, Thorp, Sutter, and Benninger joined the Kamp family as early entrepreneurs in Kampsville. River landings, like Kampsville, were vital links with trade and commerce for the majority of rural families living on the Calhoun peninsula. "In Calhoun County, as it happened throughout America, whenever a location received an unusual amount of traffic, a general store was built . . . when a landing had a store it became more attractive to visit."⁶ The competition for business was often fierce, prompting shopkeepers to aggressively market their wares. Benninger's offered free candy to all children accompanied by adults while J.A. Kamp advertised "Cheap for Cash."

By 1900 Kampsville boasted a population of 330 residents making it the third largest community in the county and one of three major landings on the Illinois River.⁷ County employment received a boost in the same year with the completion of the Kampsville Lock and Dam which rapidly became a favorite recreation and tourist area. Citizens enjoyed the luxury of sidewalks constructed from railroad ties salvaged from a temporary supply line that shuttled building materials out to the lock and dam site.⁸ Kampsville businesses prospered and some owners chose to expand, including Joseph Kamp.

United States Department of the Interior
National Park ServiceNational Register of Historic Places
Continuation SheetSection number 8 Page 6

Kamp Store

The northeast corner of Oak and Broadway was selected as the site for an impressive two story wood frame building that included family living quarters on the second story with a private exterior stairway and balcony.⁹ Building materials were freighted upriver from St. Louis and "as far away as New Orleans."¹⁰ A small storage shed located immediately behind the building at the rear (east) entrance was used for surplus dry goods, household supplies, and farm implements that were carried as standard merchandise but purchased in large or bulky quantities. Until the 1920s nearly all store merchandise was shipped via the river from suppliers in St. Louis. Special barges were commissioned to carry freight for the last shipment in the winter prior to the closing of the river for navigation. Each year one barge carried the entire winter's provisions for the Kamp Store.¹¹

High wooden shelving lined the walls of the store with glass enclosed display cases and tables scattered throughout. Canned goods, bolts of cloth, sewing machines, men's hats, and bin after bin of brilliantly colored candy dazzled early customers. Store merchandise varied through the years of its existence, as did the advertisements announcing the bargains to be had at the Kamp Store. One memorable exception was Yale Coffee, advertised in 1902 as "Nice blended goods and a whole bean makes a good drink."¹² It was the only brand of coffee carried at the store until World War II rationing made it impossible to get. Neither of the wars, World War I or World War II, had a negative effect on the store's business. Although some supplies were difficult to acquire during World War II, the volume of business handled by the store acted as a shield with suppliers. The Kamp family had been steady and reliable customers for decades with many of their business associates and received preferential treatment. Barter had always been an acceptable practice at the Kamp Store. Eggs, cream, country butter, and lard were frequently exchanged by customers for durable goods or staples. The ability to be flexible in terms of payment gave the store an advantage during periods of economic stress and added longevity. From the date it opened its doors in 1902, the Kamp Store had one proprietor, Mr. Joseph A. Kamp. Until his death in 1952, Mr. Kamp sold "everything from needles to threshing machines and automobiles."¹³

Following Mr. Kamp's ownership, the Kamp Store continued to serve the community as a grocery store, the Capp's Store, until the early 1970s. It later became a carpet store and then stood empty until the

United States Department of the Interior
National Park Service

**National Register of Historic Places
Continuation Sheet**

Section number 8 Page 7

Kamp Store

Center for American Archeology (CAA) acquired the building in 1991. The CAA has redecorated the interior of the second story to accommodate its present use as dormitory space for students participating in seasonal field school programs. The main floor has been adapted for use as a lecture hall and laboratory. Following the severe flooding of the past summer, the aluminum siding that sheathed the exterior of the building was removed to allow the wooden siding to dry. Since then the remainder of the metal siding has been removed and the original clapboard siding has been exposed.

Commercial development in Kampsville has been adversely affected by a variety of factors: population decline, erosion of the local economy, and the forces of nature.¹⁴ Lying as it does within the Illinois and Mississippi river floodplains, the county has suffered catastrophic loss from flooding sporadically throughout its history, including 1993. Each cycle of flooding has destroyed property and discouraged commercial growth making the few structures that remain from the area's historic period more precious with each passing year. Other historic commercial buildings have faded from the village landscape. The Kamp Store stands alone as the last vestige of a nearly forgotten era in the village of Kampsville's evolution. For this reason the Center for American Archeology, a private not-for-profit organization, asks that the Kamp Store be placed on the National Register of Historic Places.

United States Department of the Interior
National Park Service

National Register of Historic Places
Continuation Sheet

Section number 8 Page 8

Kamp Store

Endnotes

1. Warranty Deed. William R. Farrow and wife to M. A. Kamp. Filed for Record, October 4th 1889. On file County Clerk and Recorder's Office, Hardin, Calhoun County, Illinois.
2. _____, Portrait and Biographical Album of Pike and Calhoun Counties, Illinois. (Chicago: Biographical Publishing Company), 1891: 317.
3. Carpenter, George W., History of Calhoun County. (Jerseyville, IL: Democrat Print), 1934: 25.
4. Kampsville (IL) Century, July 1974 (3): 49.
5. Kampsville (IL) Century, July 1974 (5): 89.
6. Underwood, Larry, "The Passing of An Era," Outdoor Illinois. February 1975: 12.
7. Ibid.
8. Ibid.
9. Personal recollection of Mrs. Josephine Kamp Foilles, daughter of Joseph Kamp. July 1992.
10. Letter from Lewis E. Retzer to Paul Katz dated June 9, 1991. Center for American Archeology, Kampsville, Illinois.
11. Personal recollection of Mrs. Josephine Kamp Foilles. July 1992.
12. "To the Consumer," Calhoun Republican. January 9, 1902: 6.
13. _____, History of the Illinois River Valley. Vol. II. (Chicago: S.J. Clarke Publishing Co.) 1932:498.
14. Underwood, Larry, "A New Geography of Calhoun County," Outdoor Illinois, July 1975: 19.

United States Department of the Interior
National Park Service

National Register of Historic Places
Continuation Sheet

Section number 9 Page 9

Kamp Store

9. Bibliography

Biographical Publishing Company. Portrait and Biographical Album of Pike and Calhoun Counties, Illinois. Chicago: Biographical Publishing Company, 1891.

Calhoun Republican. "To the Consumer," January 9, 1902.

Carpenter, George W. History of Calhoun County. Jerseyville, Illinois: Democrat Print, 1934.

S.J. Clarke Publishing Company. History of the Illinois River Valley, Vol. II. Chicago: S.J. Clarke Publishing Co., 1932.

Kampsville (IL) Century. July, 1974.

Letter from Lewis E. Retzer to Paul Katz, June 9, 1991, Center for Amercian Archeology, Kampsville, Illinois.

Personal recollection of Mrs. Josephine Kamp Foilles, daughter of Joseph Kamp. July, 1992.

Underwood, Larry. "A New Geography of Calhoun County," Outdoor Illinois. July, 1975.

Underwood, Larry. "The Passing of An Era," Outdoor Illinois. February, 1975.

Warranty Deed. William R. Farrow and wife to M.A. Kamp. Filed for record, October 4, 1889. On file County Clerk and Recorder's Office, Hardin, Calhoun County, Illinois.

United States Department of the Interior
National Park Service

National Register of Historic Places Continuation Sheet

Section number 10 Page 10

10. Geographical Data

Verbal Boundary Description

Kamp Store is on Lot 40, Block 8, of the Original Town (Kampsville) in Crater Township, Township Nine South, Range Two East; in the Southwest Quarter of Section Two, Calhoun County.

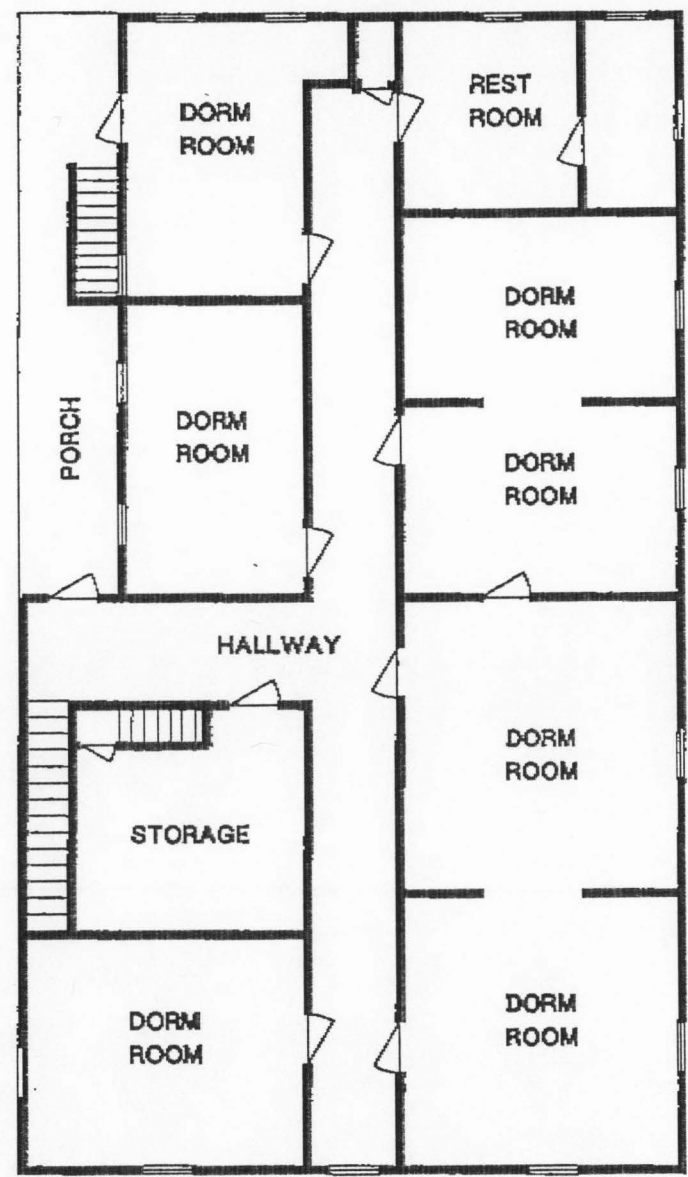
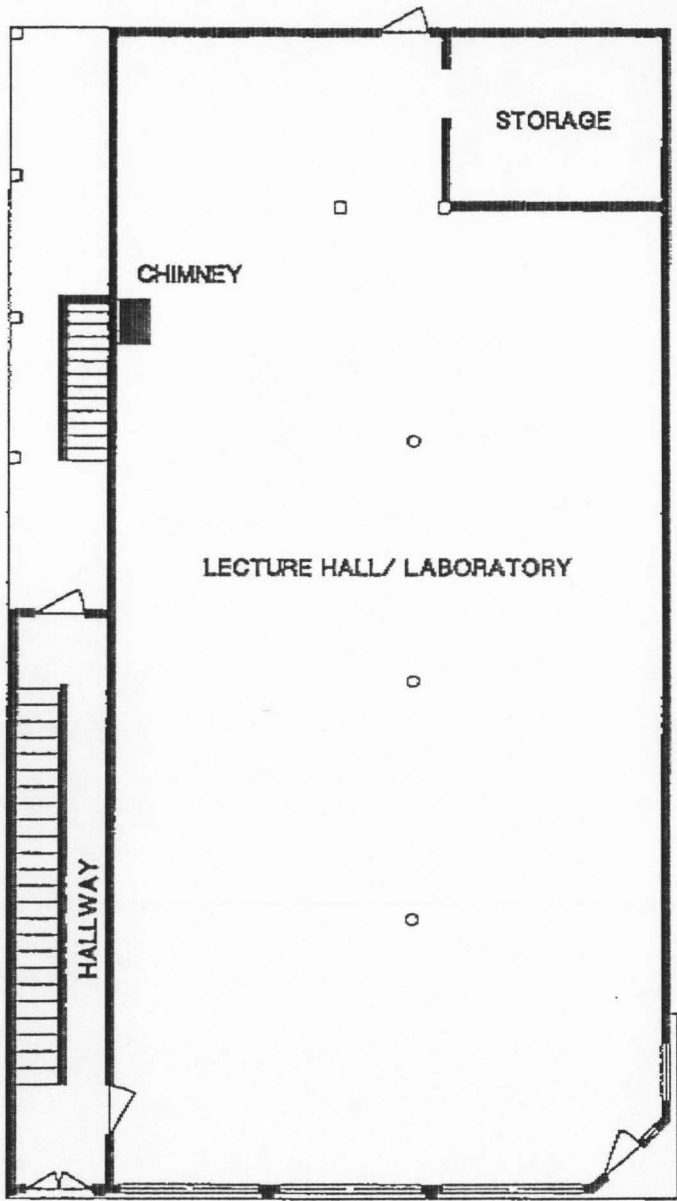
Boundary Justification

The nominated property includes the entire parcel historically associated with Kamp Store.

KAMP STORE
CENTER FOR AMERICAN ARCHEOLOGY
KAMPSVILLE, ILLINOIS

FIRST FLOOR

SECOND FLOOR



UNITED STATES DEPARTMENT OF THE INTERIOR
NATIONAL PARK SERVICE

NATIONAL REGISTER OF HISTORIC PLACES
EVALUATION/RETURN SHEET

REQUESTED ACTION: NOMINATION

PROPERTY NAME: Kamp Store

MULTIPLE NAME:

STATE & COUNTY: ILLINOIS, Calhoun

DATE RECEIVED: 1/06/94 DATE OF PENDING LIST: 1/18/94
DATE OF 16TH DAY: 2/03/94 DATE OF 45TH DAY: 2/20/94
DATE OF WEEKLY LIST:

REFERENCE NUMBER: 94000027

NOMINATOR: STATE

REASONS FOR REVIEW:

APPEAL: N DATA PROBLEM: N LANDSCAPE: N LESS THAN 50 YEARS: N
OTHER: N PDIL: N PERIOD: N PROGRAM UNAPPROVED: N
REQUEST: N SAMPLE: N SLR DRAFT: N NATIONAL: N

COMMENT WAIVER: N

ACCEPT RETURN REJECT 2/4/94 DATE

ABSTRACT/SUMMARY COMMENTS:

RECOM. /CRITERIA _____
REVIEWER _____
DISCIPLINE _____
DATE _____

DOCUMENTATION see attached comments Y/N see attached SLR Y/N

CLASSIFICATION

count resource type

STATE/FEDERAL AGENCY CERTIFICATION

FUNCTION

historic current

DESCRIPTION

architectural classification
 materials
 descriptive text

SIGNIFICANCE

Period Areas of Significance--Check and justify below

Specific dates Builder/Architect
Statement of Significance (in one paragraph)

- summary paragraph
- completeness
- clarity
- applicable criteria
- justification of areas checked
- relating significance to the resource
- context
- relationship of integrity to significance
- justification of exception
- other

BIBLIOGRAPHY

GEOGRAPHICAL DATA

acreage verbal boundary description
 UTM's boundary justification

ACCOMPANYING DOCUMENTATION/PRESENTATION

sketch maps USGS maps photographs presentation

OTHER COMMENTS

Questions concerning this nomination may be directed to

_____ Phone _____

Signed _____ Date _____



KAMP Store, Kampsville, Calhoun County, IL
Center for American Archeology, Kampsville, IL

5/02/93

Neg: CAA, Kampsville, IL

View looking east, front facade (siding on)

Photo #1



Kamp Store, Kampsville, IL, Calhoun County
Center for American Archeology, Kampsville, IL

5/02/92

Neg: CAA, Kampsville, IL

View looking at north facade (sidling on)

Photo #2



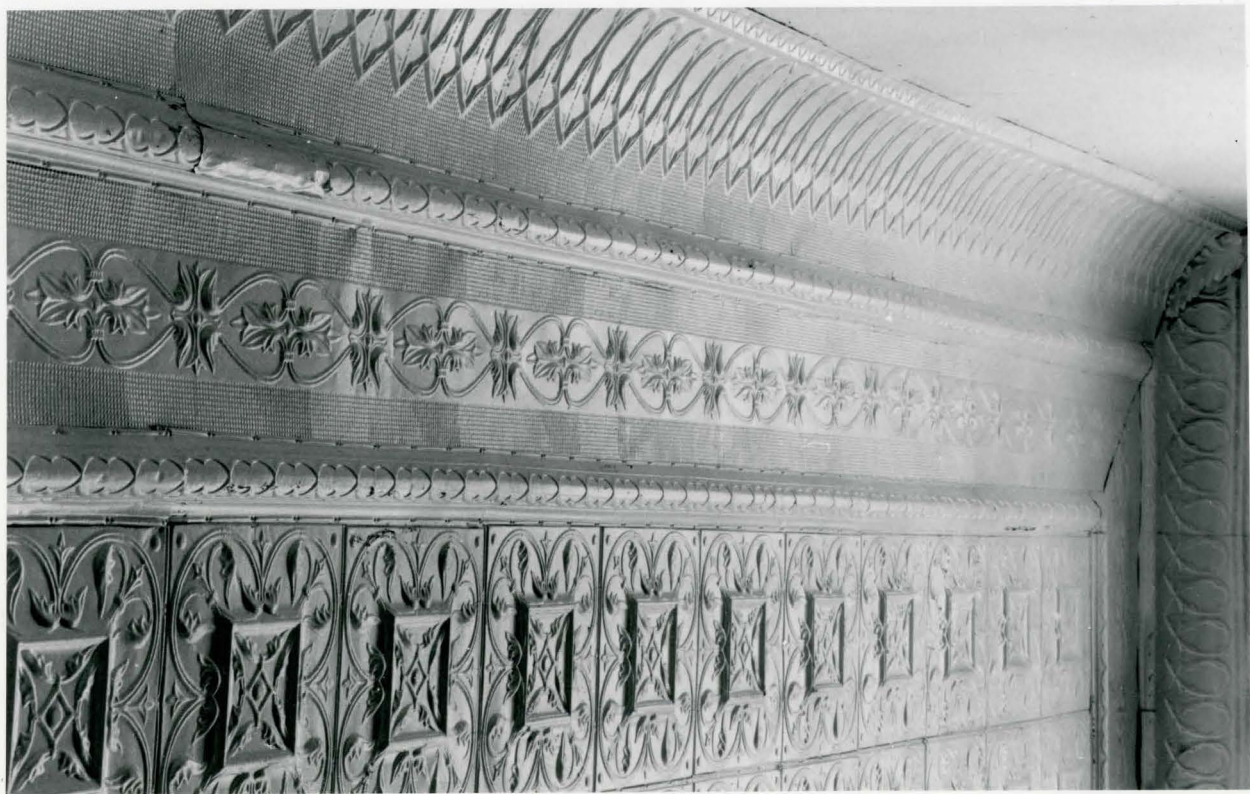
Kamp Store, Kampsville, IL, Calhoun County
Center for American Archeology, Kampsville, IL

5/10/93

Neg: CAA, Kampsville, IL

View looking west, interior first floor

Photo #3



Kamp Store, Kampsville, IL, Calhoun County
Center for American Archeology, Kampsville, IL

5/10/92

Neg: CAA, Kampsville, IL

Detail of first floor ceiling

Photo #4



Kamp store, Kampsville, IL, Calhoun County
Center for American Archeology, Kampsville, IL

5/10/92

Neg. CAA, Kampsville, IL

Newell post, interior stair looking east

Photo #5



Kamp Store, Kampsville, IL, Calhoun County
Center for American Archeology, Kampsville, Calhoun County

5/10/92

Neg: CAA, Kampsville, IL

Detail of stencil on second floor hallway

Photo #6



Kamp Store, Kampsville, IL, Calhoun County
Center for American Archeology, Kampsville, IL

12/08/93

Neg: CAA, Kampsville, IL

View looking at north + west elevation (sidling off)

Photo #7



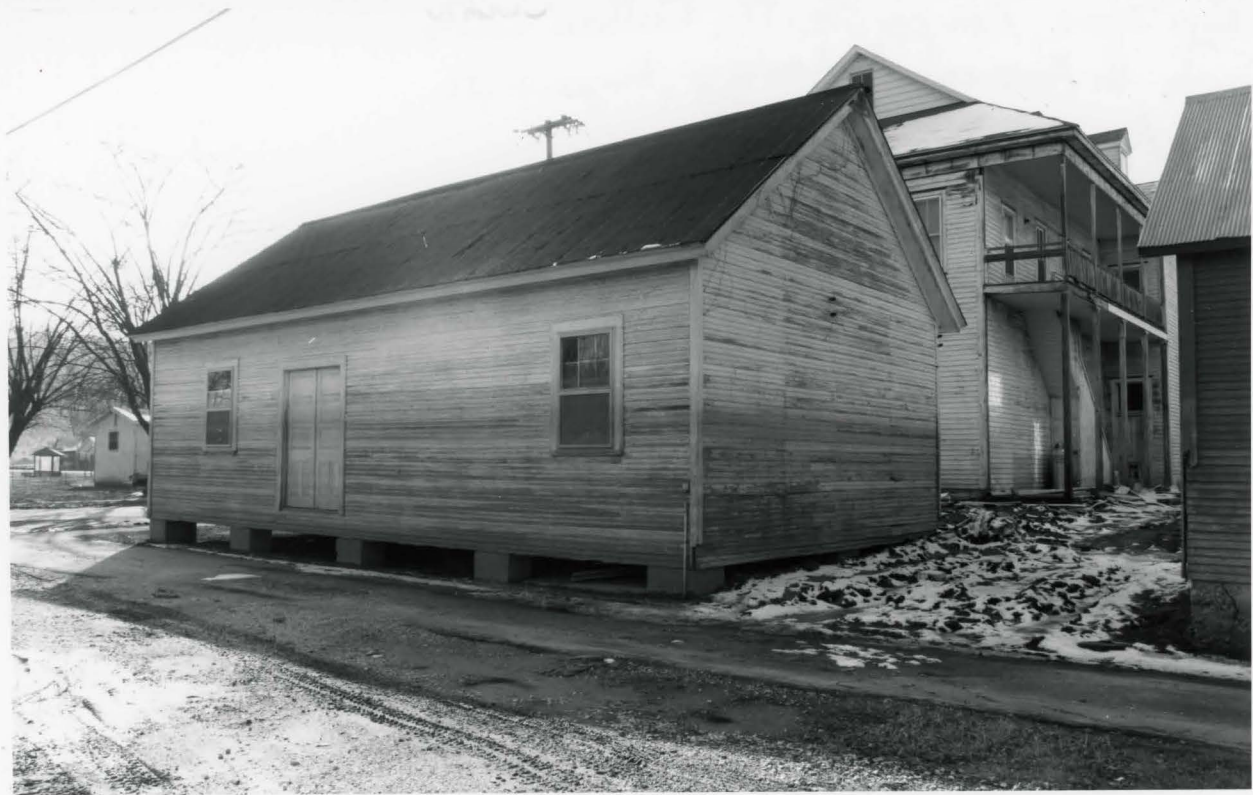
Kamp Store, Kampsville, IL, Calhoun County
Center for American Archeology

12/08/93

Neg: CAA, Kampsville, IL

View looking at south & east elevations

Photo #8



Storage shed

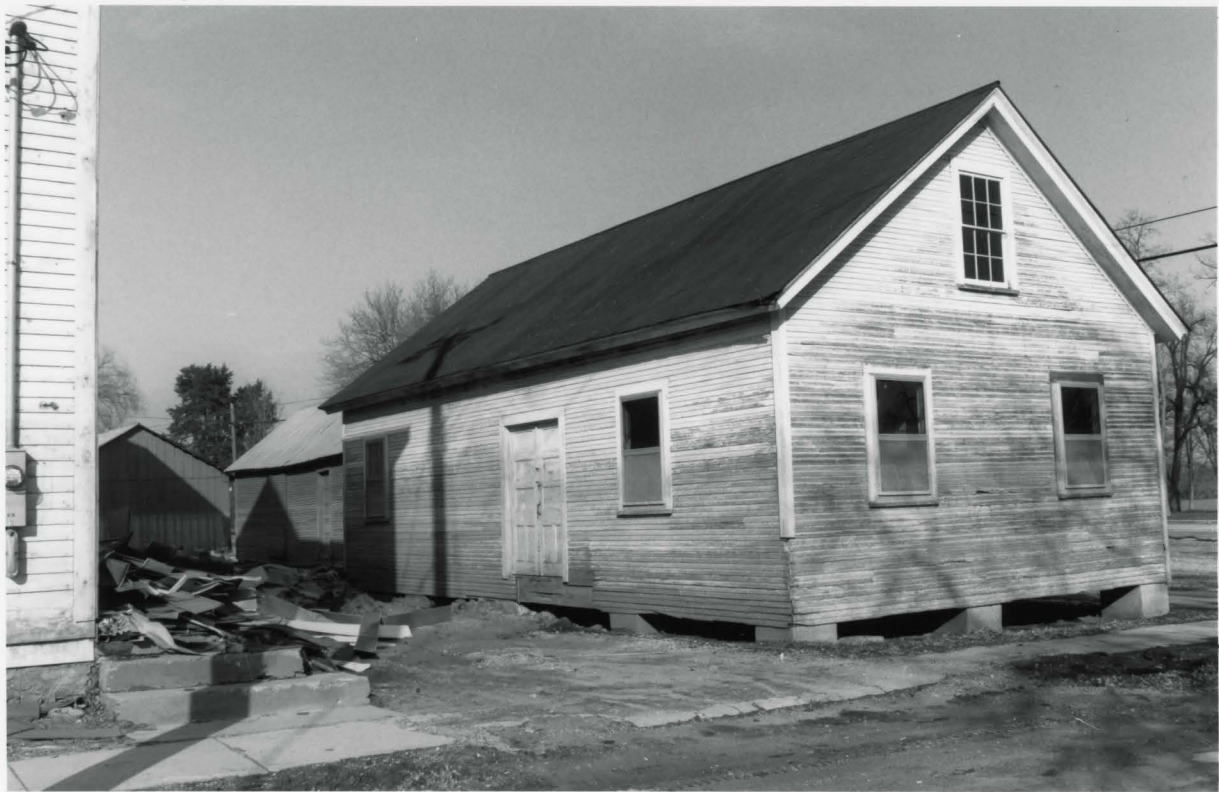
KAMP store, Kampsville, IL, Calhoun County

Center for American Archeology, Kampsville, IL

12/02/93

View looking southwest, side & rear view

Photo #9



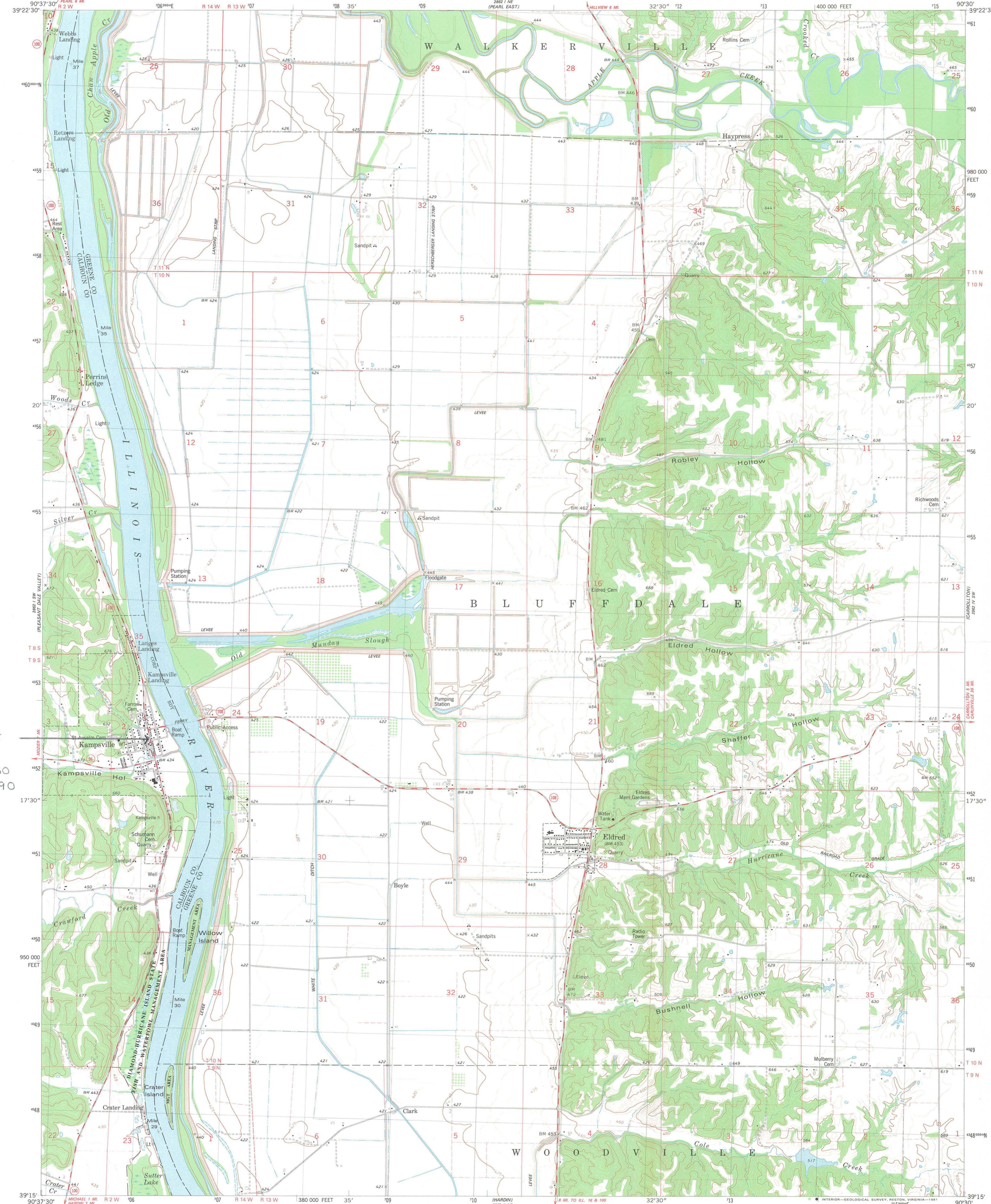
Storage shed

Kamp Store, Kampsville, IL, Calhoun County
Center for American Archeology, Kampsville, IL

12/02/93

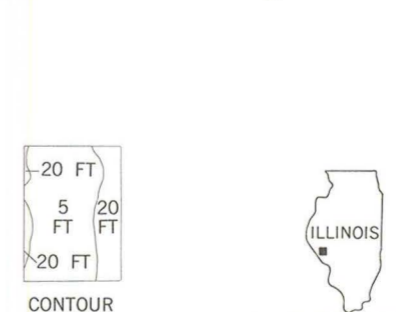
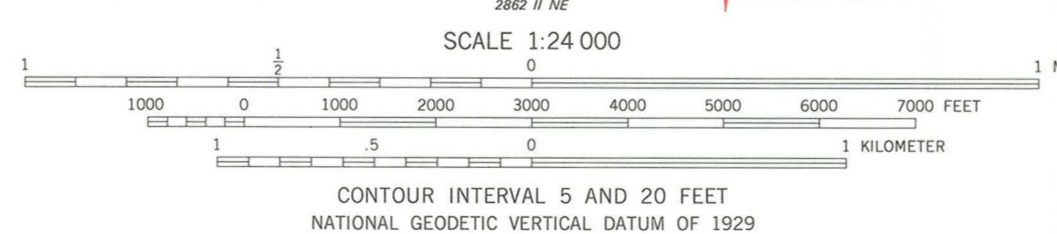
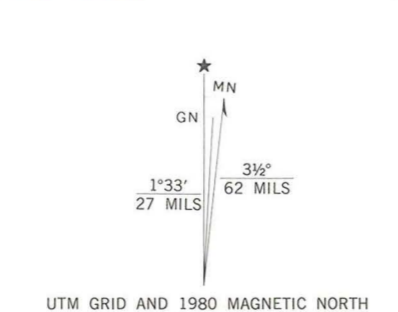
View looking north east, front + side view

Photo #10



KAMP STORE
ZONE 15
E 706080
N 4352390

Mapped, edited, and published by the Geological Survey
Control by USGS and NOS/NOAA
Topography by photogrammetric methods from aerial photographs taken 1974. Field checked 1976. Map edited 1980
Projection and 10,000-foot grid ticks: Illinois coordinate system, west zone (transverse Mercator)
1000-meter Universal Transverse Mercator grid, zone 15
1927 North American Datum
To place on the predicted North American Datum 1983 move the projection lines 1 meter south and 10 meters east as shown by dashed corner ticks
There may be private inholdings within the boundaries of the National or State reservations shown on this map
Fine red dashed lines indicate selected fence and field lines where generally visible on aerial photographs. This information is unchecked



KAMPSVILLE, ILL.
SE/4 PEARL 15' QUADRANGLE
N3915-W9030/7.5

1980
DMA 2862 1 SE-SERIES V883

THIS MAP COMPLIES WITH NATIONAL MAP ACCURACY STANDARDS
FOR SALE BY U.S. GEOLOGICAL SURVEY, RESTON, VIRGINIA 22092
AND BY THE STATE GEOLOGICAL SURVEY, URBANA, ILLINOIS 61801
A FOLDER DESCRIBING TOPOGRAPHIC MAPS AND SYMBOLS IS AVAILABLE ON REQUEST



**Illinois Historic
Preservation Agency**

Old State Capitol • Springfield, Illinois 62701 • (217) 782-4836

December 22, 1993

Beth Boland
National Register of Historic Places
National Register Section
National Park Service
Department of the Interior
800 N. Capitol Street, N.W.
Washington, D.C. 20002

RECEIVED

JAN 06 1994

**NATIONAL
REGISTER**

Dear Beth:

Enclosed please find the National Register nomination forms and accompanying documentation for the following properties that were recommended for nomination to the Register by the Illinois Historic Sites Advisory Council, and nominated by the State Historic Preservation Officer:

LeClaire Hotel, Moline
L. Haas Store, Carmi
✓ Kamp Store, Kampsville
Wabash Railroad Station and Railway Express Agency, Decatur
Beall-Orr House, Mt. Carmel
"Peace" and "Harvest", Peoria
University of Illinois Experimental Dairy Farm Historic
District, Urbana (Round Barns of Illinois MPS)

Thank you for your attention to this matter.

Sincerely yours,

Ann V. Swallow
Survey & National Register
Coordinator

encl.