

United States Department of the Interior
National Park Service

National Register of Historic Places Registration Form

This form is for use in nominating or requesting determinations for individual properties and districts. See instructions in *How to Complete the National Register of Historic Places Registration Form* (National Register Bulletin 16A). Complete each item by marking "x" in the appropriate box or by entering the information requested. If an item does not apply to the property being documented, enter "N/A" for "not applicable." For functions, architectural classification, materials and areas of significance, enter only categories and subcategories from the instructions. Place additional entries and narrative items on continuation sheets (NPS Form 10-900a). Use a typewriter, word processor, or computer, to complete all items.

1. Name of Property

historic name Lockport Lock, Dam and Power House Historic District
other names/site number Lock 2 and Controlling Works

2. Location

street & number 2502 Channel Drive [N/A] not for publication
city or town Lockport [X] vicinity
state Illinois code IL county Will code 197 zip code 60441

3. State/Federal Agency Certification

As the designated authority under the National Preservation Act, as amended, I hereby certify that this nomination request for determination of eligibility meets the documentation standards for registering properties in the National Register of Historic Places and meets the procedural and professional requirements set forth in 36 CFR Part 60. In my opinion, the property meets does not meet the National Register criteria. I recommend that this property be considered significant nationally statewide locally. () See continuation sheet for additional comments.)

Paul D Rubenstein Deputy FPO 3 Dec 2003
Signature of certifying official/Title Date

U.S. Army Corps of Engineers
State of Federal agency and bureau

In my opinion, the property meets does not meet the National Register criteria. () See continuation sheet for additional comments.)

William L. White /SHPO 12-10-02
Signature of certifying official/Title Date

Illinois Historic Preservation Agency
State or Federal agency and bureau

4. National Park Service Certification

- I hereby certify that the property is:
- entered in the National Register.
 See continuation sheet.
 - determined eligible for the National Register.
 See continuation sheet.
 - determined not eligible for the National Register.
 - removed from the National Register.
 - other, (explain): _____

[Signature]
Signature of the Keeper

Date of Action
MAR 10 2004

Lockport Lock, Dam and Power Station
Name of Property

Will County, Illinois
County and State

5. Classification

Ownership of Property (Check as many boxes as apply)	Category of Property (Check only one box)	Number of Resources within Property (Do not include previously listed resources in the count.)			
		Contributing	Noncontributing		
		<input type="checkbox"/> private	<input type="checkbox"/> building(s)	<u>2</u>	<u>2</u> buildings
		<input checked="" type="checkbox"/> public-local	<input checked="" type="checkbox"/> district	<u>0</u>	<u>0</u> sites
		<input type="checkbox"/> public-State	<input type="checkbox"/> site	<u>3</u>	<u>0</u> structures
<input checked="" type="checkbox"/> public-Federal	<input type="checkbox"/> structure	<u>0</u>	<u>0</u> objects		
	<input type="checkbox"/> object	<u>5</u>	<u>2</u> Total		

Name of related multiple property listing
(Enter "N/A" if property is not part of a multiple property listing.)

Number of contributing resources previously listed in the National Register

Historic Resources of the Illinois Waterway Navigation System, 1808-1951 0

6. Function or Use

Historic Functions (Enter categories from instructions)	Current Functions (Enter categories from instructions)
<u>Transportation: water-related</u>	<u>Transportation: water-related</u>
<u>Industry: energy facility</u>	<u>Industry: energy facility</u>
<u> </u>	<u> </u>
<u> </u>	<u> </u>
<u> </u>	<u> </u>
<u> </u>	<u> </u>

7. Description

Architectural Classification (Enter categories from instructions)	Materials (Enter categories from instructions)
<u>Late 19th and 20th Century Revivals: Italian</u>	<u>foundation Concrete</u>
<u>Renaissance</u>	<u>walls Concrete</u>
<u> </u>	<u> </u>
<u> </u>	<u>roof Ceramic tile</u>
<u> </u>	<u>other</u>

Narrative Description

(Describe the historic and current condition of the property on one or more continuation sheets.)

United States Department of the Interior
National Park Service
National Register of Historic Places
Continuation Sheet

Lockport Lock, Dam & Power House Historic District

Section number 7 Page 1

Will County, Illinois

The Lockport Lock, Dam and Power House Historic District has five contributing resources. There are three structures (the dam, Chicago Sanitary District lock, new lock) and two buildings (powerhouse and control station). Landscape features such as mooring piers and minor buildings including small control stands and an emergency generator building were not counted, for their physical presence and role in lock and dam operation are ancillary. A double garage dating from 1933 has been altered and is a noncontributing building. A new maintenance shop constructed in 1995 also does not contribute to the historical significance of the district.

The development of the district is complex, for it includes properties the Chicago Sanitary District constructed from 1905-10 and resources the State of Illinois built in 1923-33, and turned over to the federal government who opened the facility for navigational purposes in 1933. The present (new) lock may have the only known operating single-leaf, submergible, vertical lift, floating lock gates in the country.

Located at Illinois River mile marker 291.1, the lock and dam district is just south of the small community of Lockport, which was established as headquarters for the Illinois & Michigan Canal that opened in 1848. Heavy tree cover and vegetation shield the district and its setting on the Des Plaines River from most visual intrusions. Visible above the tree canopy are an extensive but distant network of major power lines as well as several water towers. The power grid reflects the industrial nature of the area near the river between Lockport and Joliet to the south. Despite the relative proximity of modern industrial land uses, the immediate surroundings have a decidedly rural, unimproved riverside quality.

Located on the east bank of the river, the lock and dam facility is accessible by vehicle from a long roadway that runs along the river, which runs north-south at this point. Directly east of the district the topography drops off steeply, and a minor river channel, following by a rail line and a roadway are located just behind and below the district. The powerhouse is west of the lock, with the old, unused Chicago Sanitary District lock between them. Both the powerhouse and the old lock pre-date the current lock and dam.

Chicago Sanitary District Lock

A tail race wall, guide walls (all of concrete), and deteriorating wooden miter gates comprise the old lock the Chicago Sanitary District constructed as part of ambitious plans to provide an improved waterway and also hydroelectric power to Chicago. The lock has not been used since 1933 when the present new lock replaced it. The old lock is a standard navigation lock with a chamber 130 feet long but just 22 feet wide and miter gates both upstream and downstream. Isham Randolph was the Chief Engineer for the Chicago Sanitary District when the lock was constructed, between 1905

United States Department of the Interior
National Park Service
National Register of Historic Places
Continuation Sheet

Lockport Lock, Dam & Power House Historic District
Will County, Illinois

Section number 7 Page 2

and 1910.

The combined tail race wall and old lock guide wall is ca. 1000 feet long. The first 500 feet of the walls extended the river wall of a replaced ca. 1900 lock. The walls served barge traffic by counteracting the outdraft produced by water coming through the powerhouse draft tubes as well as the two gates of the dam located between the lock and the powerhouse. At the end of the 500 foot river wall extension, the wall turns northwest, that is, toward the powerhouse. The top 2-4 feet of the first ca. 150 feet of this portion is above water level. The tail race wall and old lock guide wall form a triangular shape which is now filled with earth and has vegetation growing on it. A ca. 200 foot section of the wall is submerged. Its function was to keep water coming out of the power plant's draft tubes from flowing into the sluiceway against the flow of water passing through the dam.

The upstream guide wall for the 1905-10 lock consists of a ca. 150' long series of reinforced concrete arches extending upstream from the upstream end of the river wall of the ca. 1900 lock. Like the other guide walls, the arches helped barge traffic counteract outdraft. The distinctive arched design allowed the guide wall to function without unnecessarily obstructing water movement. The more water movement, the colder it must be before ice forms. Thus, this design was intended to prevent icing of the upstream miter gates of the lock and the 48' bear trap gate in the dam portion located just riverward of the riverward lock wall. The new lock dwarfs the earlier structure.

New Lock

Constructed primarily by the State of Illinois and completed by the federal government from 1923-33, the new lock was placed in operation in 1933. Like the downstream facilities at Brandon Road, Dresden Island, Marseilles, Starved Rock, Peoria, and La Grange, it is an Ohio River Standard navigation lock with a 110 foot x 600 foot chamber. The Lockport lock enjoys a lift of 40 feet, the largest lift in the Illinois Waterway system. Single-leaf, vertical-lift main and also emergency gates are located upstream, and downstream is a single set of miter gates. The upstream gates are said to be the only operating historic lock with single-leaf, submergible vertical-lift gates and therefore to stand as a rare intact example of lock gate technology intended for very high lift lock gates.

The lock is watered by a system of tunnels in the walls. Four Tainter valves, one located at each end of the main penstock and extending the full length of each wall, control flow in the tunnels. Up- and downstream guide wall extensions to the land wall are used for maneuvering barge traffic in and out of the lock. The lock consists of reinforced concrete walls and steel gates. The upstream gates are cable driven, while the downstream gates are operated by gears and electric

United States Department of the Interior
National Park Service
National Register of Historic Places
Continuation Sheet

Lockport Lock, Dam & Power House Historic District
Will County, Illinois

Section number 7 Page 3

motor assemblies.

Dam

The dam is of course integral to the operation of both the new (1933) lock and the powerhouse. Without it, the upstream pool of the former Sanitary and Ship Canal could not be held to the proper depth. Approximately 120 feet long, the concrete dam adjoins the Chicago Sanitary District lock at its upstream end and extends to the headrace of the powerhouse. Overall, it is a non-navigable dam, but the east 50 feet of the dam is a non-moveable dam while the remaining 70 feet on the west end is a moveable dam. The 70 foot pier dam originally contained (from east to west) a 48 foot wide bear trap sector gate with a 12 foot vertical oscillation, followed by a 10 foot wide pier, and a 12 foot wide bear trap sector gate.

A distinctive small pier house is located over the 10 foot wide pier dam. Displaying Italian Renaissance detail, the pier house has a ceramic tile roof, concrete walls, dentil and egg-and-dart courses, and bay windows on either side. The design, materials, and motifs of the pier house were intended to mirror those of the massive powerhouse that dominates the site.

Powerhouse

Also known as the Lockport Hydroelectric Generating Station, the powerhouse was built between 1905 and 1907 and placed in operation in 1908. The architect was Frederick L. Barrett. Characteristics of the Italian Renaissance style exhibited on the primary 385 foot x 70 foot portion include the hipped, low-pitched ceramic tile roof, arcades of full length windows, pilasters, classical detail (including dentil and egg-and-dart courses), and symmetrical facade. The building employs concrete that has been cast in large blocks and laid with narrow mortar to simulate stonework.

Pilasters divide the principal or south facade into 10 bays, and each have three arched windows with small squared windows above them. A narrow continuous sill for the small squared windows sets them apart from the arcades. These motifs continue (but without the intervening pilasters) for the five arched windows along the east and west elevations.

To be at water's edge and make use of water power, the main or south facade of the powerhouse is two stories high while the north facade is less than one story. Two utilitarian portions are located on the rear or north facade, one after the other. One has a hipped roof, the other smaller section has a flat roof.

The powerhouse contains three 30" diameter 300-rpm 350-kilowatt D.C. vertical turbine and

United States Department of the Interior
National Park Service
National Register of Historic Places
Continuation Sheet

Lockport Lock, Dam & Power House Historic District

Section number 7 Page 4

Will County, Illinois

generator units. They are run by water entering the center bay of the headrace. Four horizontal, Francis-style six-runner 54" diameter Jolly McCormick Turbine Company turbines (each in a separate water intake in the headrace and attached to four 163-rpm 60-cycle three-phase 4000-kilowatt Crocker-Wheeler Electric Company generators) occupy the south half of the building. Electricity was transmitted 30 miles by means of a 33,000 volt line to the transformer house south of the Sanitary and Ship Canal at Western Avenue in Chicago. The Metropolitan Water Reclamation District of Great Chicago is currently renovating the facility for continued and increased use.

Control Station

Designed by State of Illinois personnel as part of the Illinois Waterway project, the control station is also known as the control house and the lock house. The building was constructed in the course of overall new lock construction, from 1923 to 1933. The one story building set on a raised basement is essentially rectangular but has a centered gabled bay on the lock side and an additional gable on the opposite, landward side as well. Located facing the lock, the centered bay was designed to allow workers to monitor lock activities.

The use of gables with concrete parapets imparts a rather domestic impression reminiscent of the Jacobethan style, and the use of red face brick and the chimney at one gable end furthers this impression. However, window placement and the use of a series of contrasting concrete belt courses for the sills, lintels, and water course impart a more utilitarian function while attractively unifying the design. A metal plaque on the centered bay commemorates the lock opening June 22, 1933, and honors Mortimer Grant Barnes, chief engineer for the Division of Waterways for the State of Illinois, who directed the initial design and construction of the facility.

Functioning as the administrative and operational hub, the control station is fundamental to lock and dam operation. The control stations at Lockport, Brandon Road, Dresden Island, Marseilles, and Starved Rock are nearly identical.

Noncontributing Buildings

Located well away from the principal resources of the district, the garage dates from the 1930, but has been altered. Changes include replacement siding and garage doors and windows. Built in 1995, the maintenance building echoes the materials and scale of the control station. It is one story, has a hipped roof, and is faced with red-brown brick. Bricks are placed soldier style at the base and along the cornice line. A large garage door reflects the utilitarian nature of the building.

United States Department of the Interior
National Park Service
National Register of Historic Places
Continuation Sheet

Lockport Lock, Dam & Power House Historic District

Section number 7 Page 5

Will County, Illinois

Alterations

Alterations are typical and expected for a still operating lock and dam facility. For example, hydraulic machinery has replaced the original mechanical system for operating the valves. The replacement hydraulic machinery and the downstream gate operating machinery are located on top of the lock walls whereas the original equipment was in pits by the tunnels. In 1967 the vertical lift gate was replaced. In 1985, the present relatively small cable houses located along the lock replaced larger metal mechanisms that crossed the lock ends.

Similar technological improvements have taken place at the dam. Some time after 1986, a 20' wide motorized vertical lift sluice gate was installed to replace the outdated 48' wide bear trap gate. A replacement sluice gate was centered and stationary concrete dams filled the spaces on either side. A stationary concrete dam (with walkway on top) has replaced the 12' wide bear trap gate as well. A concrete staircase was added west of the pier house to provide access to the walkway.

Some powerhouse alterations are directly related to historical events. Following the 1930s U.S. Supreme Court ruling that reduced the amount of water the Chicago Sanitary District could take from Lake Michigan, certain changes were made to the operating equipment. The west four turbines were replaced with two vertical Kaplan-style turbines in chambers 1 and 2 and sluice gates in 3 and 4. Transformer banks and a 6,000 volt transmission line were built west of the powerhouse. In the 1960s turbine 7 was removed. Now operated by the Metropolitan Water Reclamation District of Greater Chicago, successor to the Chicago Sanitary District, the powerhouse is remotely operated from a facility in Chicago. Most of these changes took place during the period of significance for the district and thus are part of its historic fabric. Indeed, the changes resulting from the Supreme Court ruling reflect an important part of the history of the development of the Illinois Waterway.

Regarding the control station, asphalt shingle replaces the original tile roof, windows are not original, and a small flat-roofed entry canopy is not original. Changes, including a new door and placement of vertical paneling, at the basement entry are not prominent. Basement windows have received glass block inserts.

The design and operation of Lockport Lock, Dam and the Powerhouse remain much as it was when the present facility opened in 1933. The continuity of the original design, layout, construction, and spatial relationships remains. The physical relationship with the now defunct Chicago Sanitary District lock also remains apparent.

Locport Lock, Dam and Powerhouse
Name of Property

Will County, Illinois
County and State

8. Statement of Significance

Applicable National Register Criteria

(Mark "x" in one or more boxes for the criteria qualifying the property for National Register listing.)

A Property is associated with events that have made a significant contribution to the broad patterns of our history.

B Property is associated with the lives of persons significant in our past.

C Property embodies the distinctive characteristics of a type, period, or method of construction or represents the work of a master, or possesses high artistic values, or represents a significant and distinguishable entity whose components lack individual distinction.

D Property has yielded, or is likely to yield, information important in prehistory or history.

Criteria Considerations
(Mark "x" in all the boxes that apply.)

Property is:

A owned by a religious institution or used for religious purposes.

B removed from its original location.

C a birthplace or grave.

D a cemetery.

E a reconstructed building, object, or structure.

F a commemorative property.

G less than 50 years of age or achieved significance within the past 50 years.

Areas of Significance

(Enter categories from instructions)

Transportation

Maritime History

Engineering

Period of Significance
1905-1952

Significant Date
1910

1933

1908

Significant Person

(Complete if Criterion B is marked above)

N/A

Cultural Affiliation

N/A

Architect/Builder

Barrett, Frederick L.

Smith, Walter Mickle

Narrative Statement of Significance

(Explain the significance of the property on one or more continuation sheets.)

9. Major Bibliographical References

Bibliography

(Cite the books, articles, and other sources used in preparing this form on one or more continuation sheets.)

Previous documentation on file (NPS):

preliminary determination of individual listing (36 CFR 67) has been requested

previously listed in the National Register

previously determined eligible by the National Register

designated a National Historic Landmark

recorded by Historic American Buildings Survey # _____

recorded by Historic American Engineering Record # _____

Primary location of additional data:

State Historic Preservation Office

Other State agency

Federal agency

Local government

University

Other

Name of repository:

US Army Corps Engineers, Rock Island District.

United States Department of the Interior
National Park Service
National Register of Historic Places
Continuation Sheet

Lockport Lock, Dam & Power House Historic District

Section number 8 Page 6

Will County, Illinois

Statement of Significance

The Lockport Lock, Dam and Power House Historic District is significant under National Register Criteria A and C as examples of property types *lock, dam, control station, and powerhouse* within the Illinois Waterway Navigation System Multiple Property Listing. Constructed in sections between 1905 and 1933, the district became a crucial component of an integral slackwater system built to permit commercial barges and towboat access to the 336 miles of the Illinois Waterway between Chicago and the Mississippi River.

Still in place, the old Chicago Sanitary District lock was used from 1910 until 1933 and was part of the Chicago Sanitary and Ship Canal constructed primarily to move Chicago sewage downstream. The related powerhouse was completed in 1908. Proposed in 1905 as part of the Great-Lakes-to-the-Gulf deep waterway, construction on the present lock and dam began in 1923. Work proceeded, and the facility opened in 1933, along with four other locks and dams along the Illinois Waterway. The lock permitted increased barge traffic along the Illinois Waterway between Chicago and the Mississippi.

Having completed initial Chicago Sanitary and Ship Canal construction in 1900, the Chicago Sanitary District commenced a second phase of construction in 1905. The project included a 10,700 foot extension of the Sanitary and Ship Canal from the windage basin north of Lockport to the head of navigation in the Des Plaines River south of Lockport. In addition, the navigation lock, concrete dam, and a large powerhouse were built. The extended canal was generally the same width (160 feet) and grade (1 to 20,000) as that of the canal completed in 1900. The powerhouse reflected turn-of-the-century attitudes toward river improvements, that such costly undertakings should yield multiple benefits to the public.

The Lockport Lock, Dam, and Power House Historic District is significant under Criterion A for its contribution to the long-term maritime, transportation, and industrial history of the Illinois Waterway. The lock and dam are crucial to the continuing use of river transportation, as discussed in the Multiple Property Submission, Historic Resources of the Illinois Waterway Navigation System, 1808-1951. An integral part of the Illinois Waterway navigation system, the Lockport Lock, Dam, and Power House Historic District has enhanced industrial growth by providing the means for transporting materials on a large scale but also by providing electricity to a major American city, Chicago.

The Lockport Lock and Dam is also significant under Criterion C as a good representative example of US Army Corps of Engineers approved lock and dam construction of the period. The lock and dam retain original appearance and function. In the interests of continued operation, some

United States Department of the Interior
National Park Service
National Register of Historic Places
Continuation Sheet

Section number 8 Page 7 Lockport Lock, Dam & Power House Historic District
Will County, Illinois

equipment and surfaces have been replaced. Nonetheless, the Lockport Lock and Dam retain a high degree of integrity of location, design, setting, materials, workmanship, feeling, and association.

10. Geographical Data

Acreage of Property 44.2 acres

UTM References
(Place additional UTM references on a continuation sheet.)

1	[1]6	[4]1[0]1[3]6	[4]6[0]2[7]6[8]	2	[1]6	[4]1[0]3[0]3	[4]6[0]2[7]1[3]	
	Zone	Easting	Northing		Zone	Easting	Northing	
3	[1]6	[4]1[0]1[5]6	[4]6[0]1[8]9[0]	4	[1]6	[4]1[0]0[6]9	[4]6[0]1[8]7[0]	

See continuation sheet

Verbal Boundary Description
(Describe the boundaries of the property on a continuation sheet.)

Boundary Justification
(Explain why the boundaries were selected on a continuation sheet.)

11. Form Prepared By

name/title Barbara J. Henning

organization Illinois State Museum Society date 2001

street & number Spring & Edwards Streets telephone 217/785-0134

city or town Springfield state IL zip code 62706

Additional Documentation

Submit the following items with the complete form:

Continuation Sheets

Maps

A USGS map (7.5 or 15 minute series) indicating the property's location.

A Sketch map for historic districts and properties having large acreage or numerous resources.

Photographs

Representative black and white photographs of the property.

Additional items

(Check with the SHPO or FPO for any additional items)

Property Owner

(Complete this item at the request of SHPO or FPO.)

name _____

street & number _____ telephone _____

city or town _____ state _____ zip code _____

Paperwork Reduction Act Statement: This information is being collected for applications to the National Register of Historic Places to nominate properties for listing or determine eligibility for listing, to list properties, and to amend existing listings. Response to this request is required to obtain a benefit in accordance with the National Historic Preservation Act, as amended (16 U.S.C. 470 et seq.).

Estimated Burden Statement: Public reporting burden for this form is estimated to average 18.1 hours per response including time for reviewing instructions, gathering and maintaining data, and completing and reviewing the form. Direct comments regarding this burden estimate or any aspect of this form to the Chief, Administrative Services Division, National Park Service, P.O. Box 37127, Washington, DC 20013-7127; and the Office of Management and Budget, Paperwork Reductions Projects (1024-0018), Washington, DC 20503.

United States Department of the Interior
National Park Service
National Register of Historic Places
Continuation Sheet

Lockport Lock, Dam & Power House Historic District
Section number 9, 10 Page 8 Will County, Illinois

Major Bibliographic References

Active Project Files. Rock Island District, US Army Corps of Engineers, Rock Island, Illinois.

Rathbun, Mary Yeater. *Architectural and Engineering Resources of the Illinois Waterway between 130th Street in Chicago and La Grange*. 2 vols. Report prepared for the Rock Island District, US Army Corps of Engineers. October 1996.

Interview with Edward Foxworth, Assistant Lockmaster, June 4, 2001.

Additional UTM coordinates

5. Zone 16, Easting 409983 Northing 4602295
6. Zone 16, Easting 409931 Northing 4602304

Verbal Boundary Description

On the east, the boundary follows the east edge of the concrete esplanade from its south tip to a point 1,200' upstream from the upstream end of the lock and along the lock's guide wall. This point is marked by a red signal light on the concrete wall what serves as the east edge of the old Sanitary and Ship Canal.

The north boundary of the district begins at the west edge of the channel for Deep Run and Other Streams (shown on the sketch map) and proceeds directly west to the red signal light on the guide wall. From the 1,200' marker on the east wall of the Sanitary and Ship Canal, the northern boundary cuts across the canal to the west side of the isthmus between the canal and the Des Plaines River. The boundary thus includes the retaining wall which is part of the powerhouse's forebay. On the west, the boundary follows along the west side of the isthmus to the south edge of the power house parking lot. From there it follows the south edge of the parking lot to the east edge of the isthmus, then follows the isthmus's east edge to a point just beyond two mooring piers. The short southern boundary crosses the canal, back to the point of origin.

Verbal Boundary Justification

The history property boundary for the Lockport Lock, Dam and Powerhouse Historic District was drawn to include the primary extant historic components of the lock and dam and powerhouse complex. Six mooring piers, which were added after the lock and dam was completed, are also included, as they are part of the continuing use of the facility and are placed near historic features.

United States Department of the Interior
National Park Service

NATIONAL REGISTER OF HISTORIC PLACES
CONTINUATION SHEET

Section Property Owner Page 9

Lockport Lock, Dam & Power House Historic District

John C. Farnan, General Superintendent
Michael G. Rosenberg, Attorney
Metropolitan Water Reclamation District
100 E. Erie Street
Chicago, Illinois 60611

Kenneth A. Barr, Chief, Economic and Environmental Analysis Branch
Ron Deiss, Planning, Programs and Project Management Division
Department of the Army
Rock Island District, Corps of Engineers
Clock Tower Building-P.O. Box 2004
Rock Island, Illinois 61204-2004

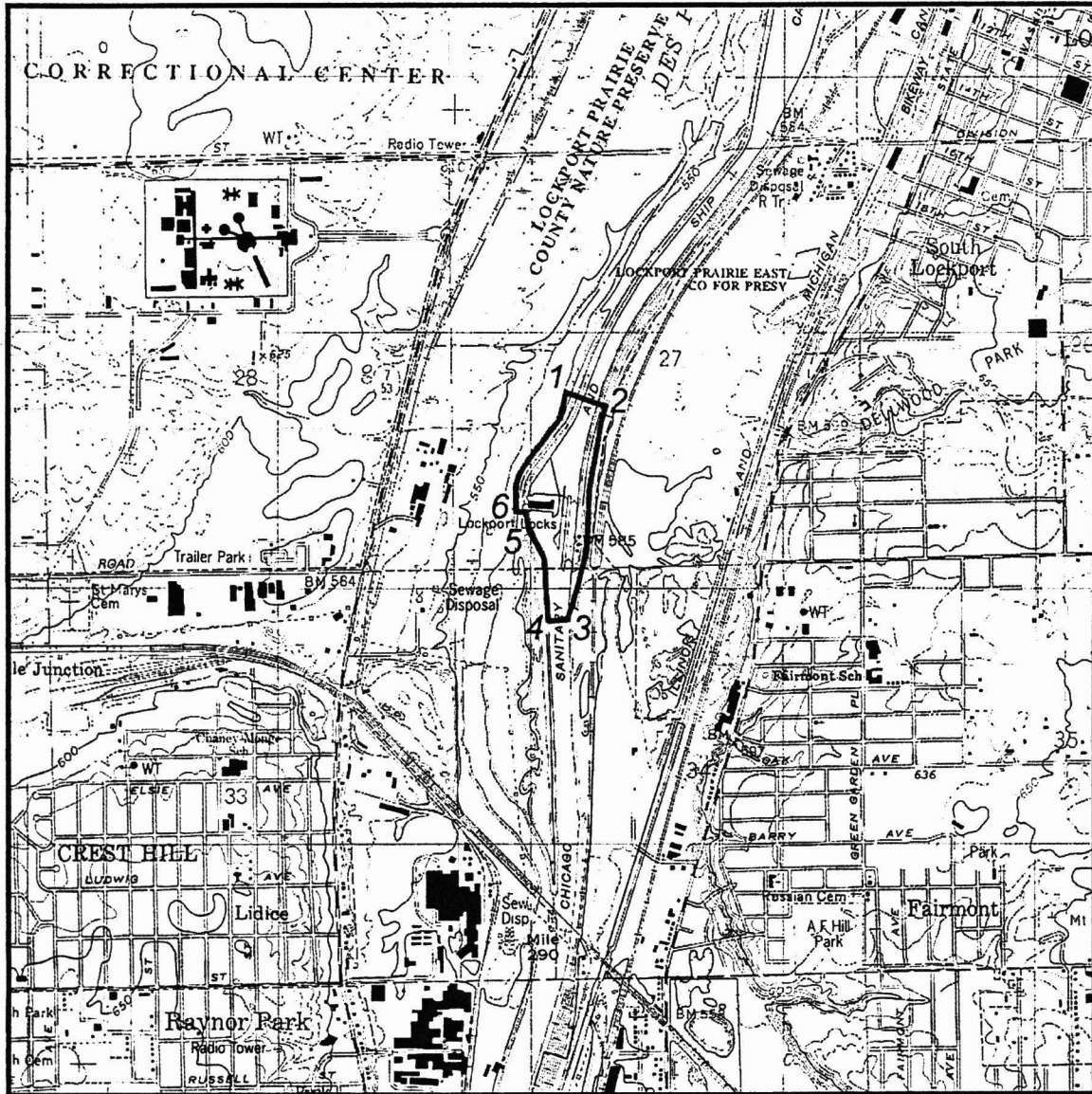


Figure 1. National Register District Boundary, Lockport Lock, Dam, and Power House Historic District, Will County, Illinois. Numerals correspond to UTM coordinates listed on nomination form.

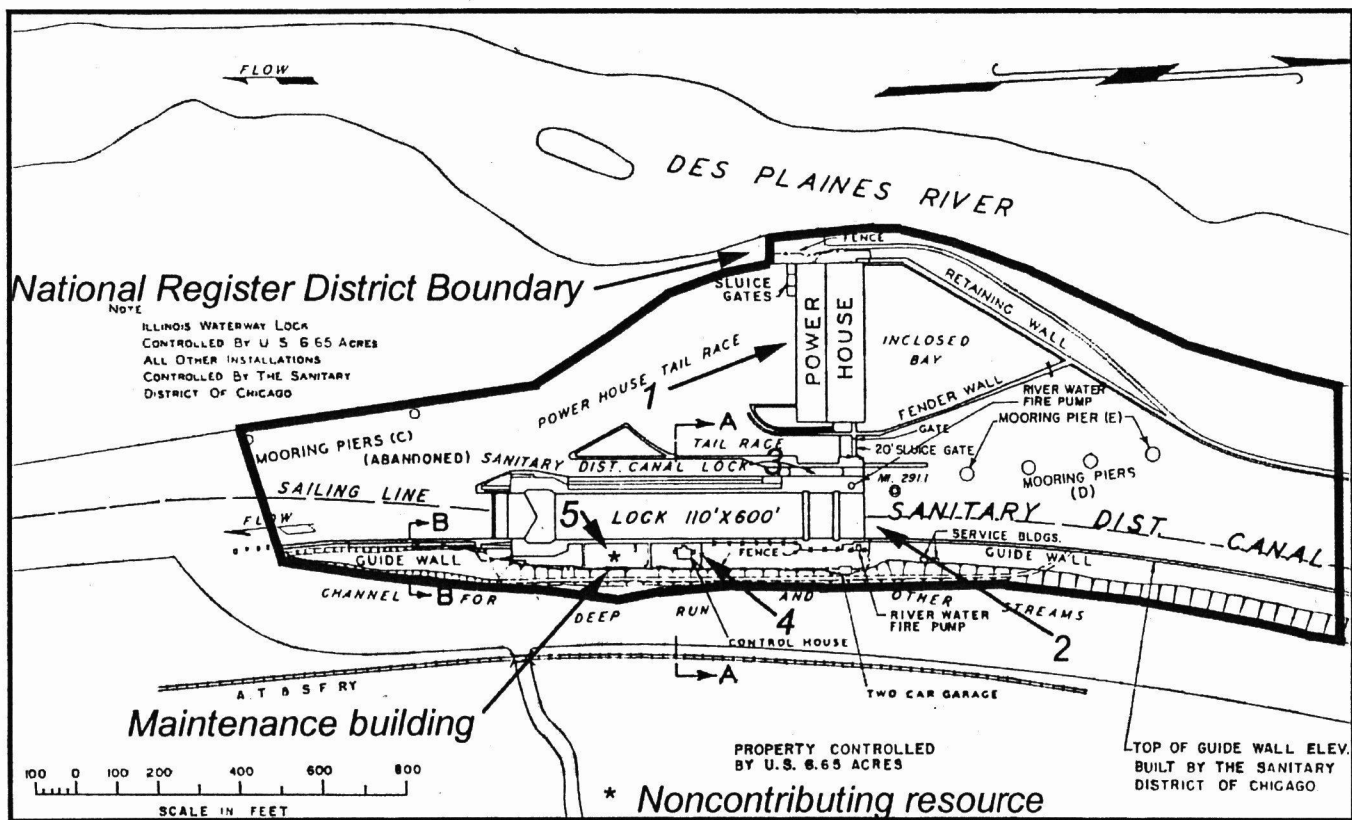


Figure 2. Lockport Lock and Power House District. Map source: September 30, 1991 map by Rocks Island District sheet 57, Illinois Waterway and Harbor Project. Illustrations shows number and orientation of photographs and National Register District Boundary.



Figure 3. Power House to northwest, Lockport Lock, Dam, and Power House Historic District, Will County, Illinois (*Photographed by Mary Yeater Rathbun 1992*).

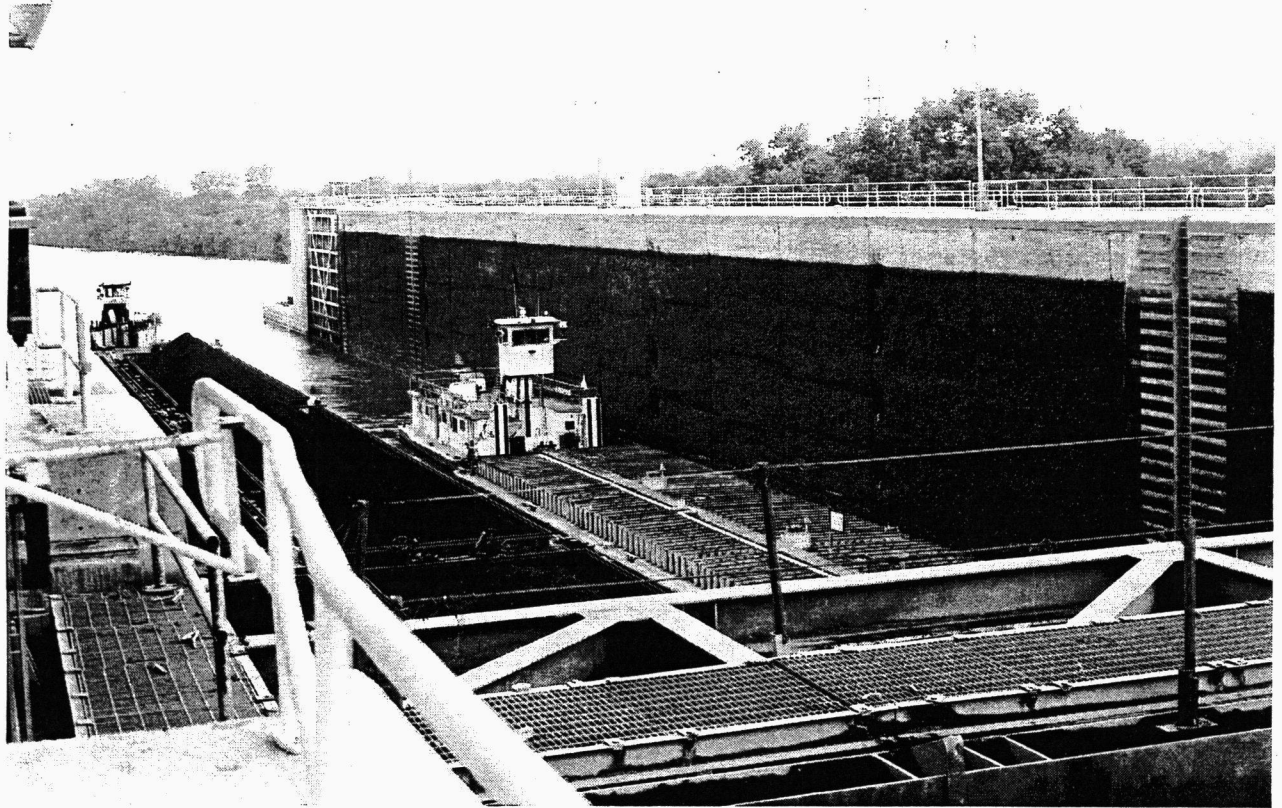


Figure 4. Lock to south/southwest, Lockport Lock, Dam, and Power House Historic District, Will County, Illinois (Photographed by Mary Yeater Rathbun 1992).

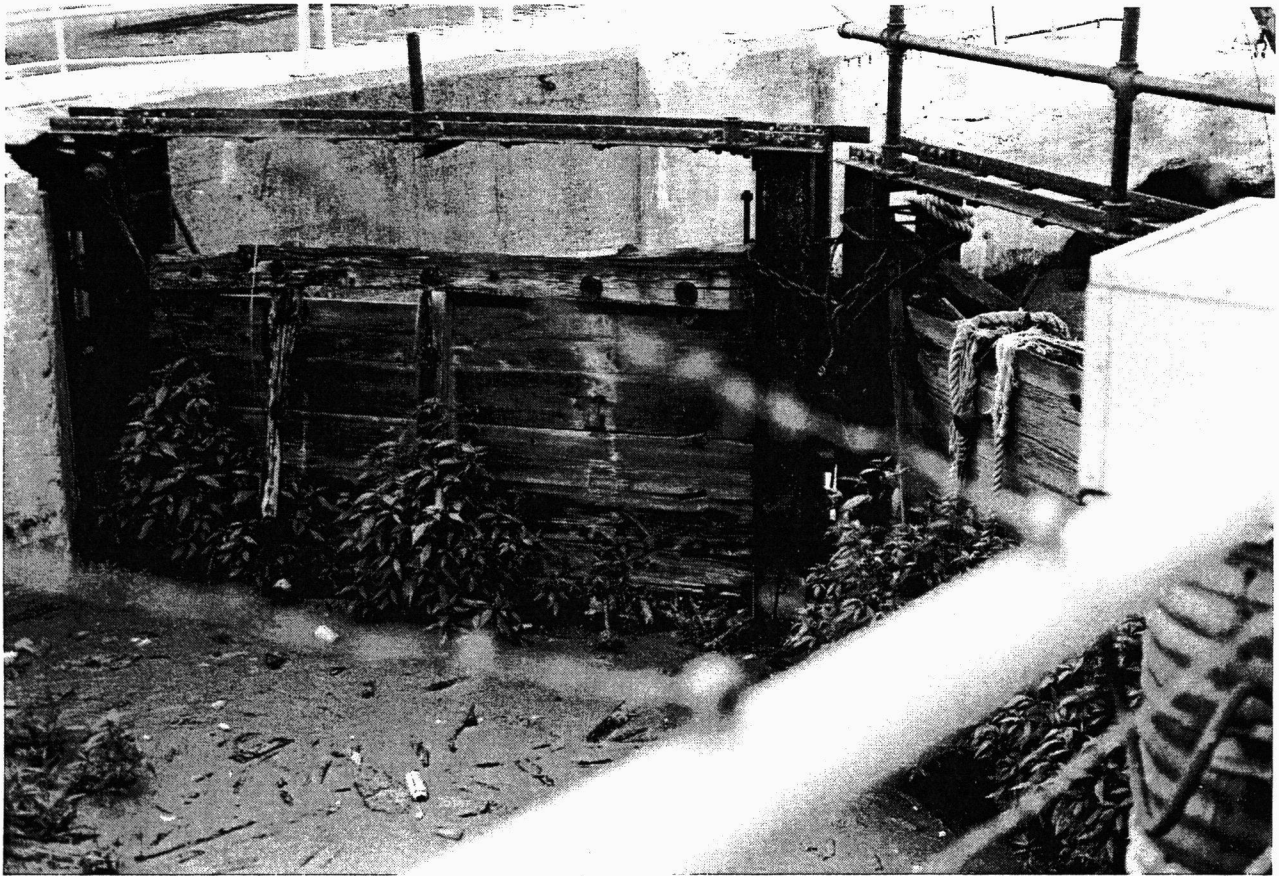


Figure 5. Old lock to northwest Lockport Lock, Dam, and Power House Historic District, Will County, Illinois (*Photographed by B. J. Henning 2001*).



Figure 6. Control Station to south Lockport Lock, Dam, and Power House District, Will County, Illinois (*Photographed by Mary Yeater Rathbun 1992*).



Figure 7. Maintenance building to northeast, Lockport Lock, Dam, and Power House Historic District, Will County, Illinois (Photographed by B. J. Henning 2001).

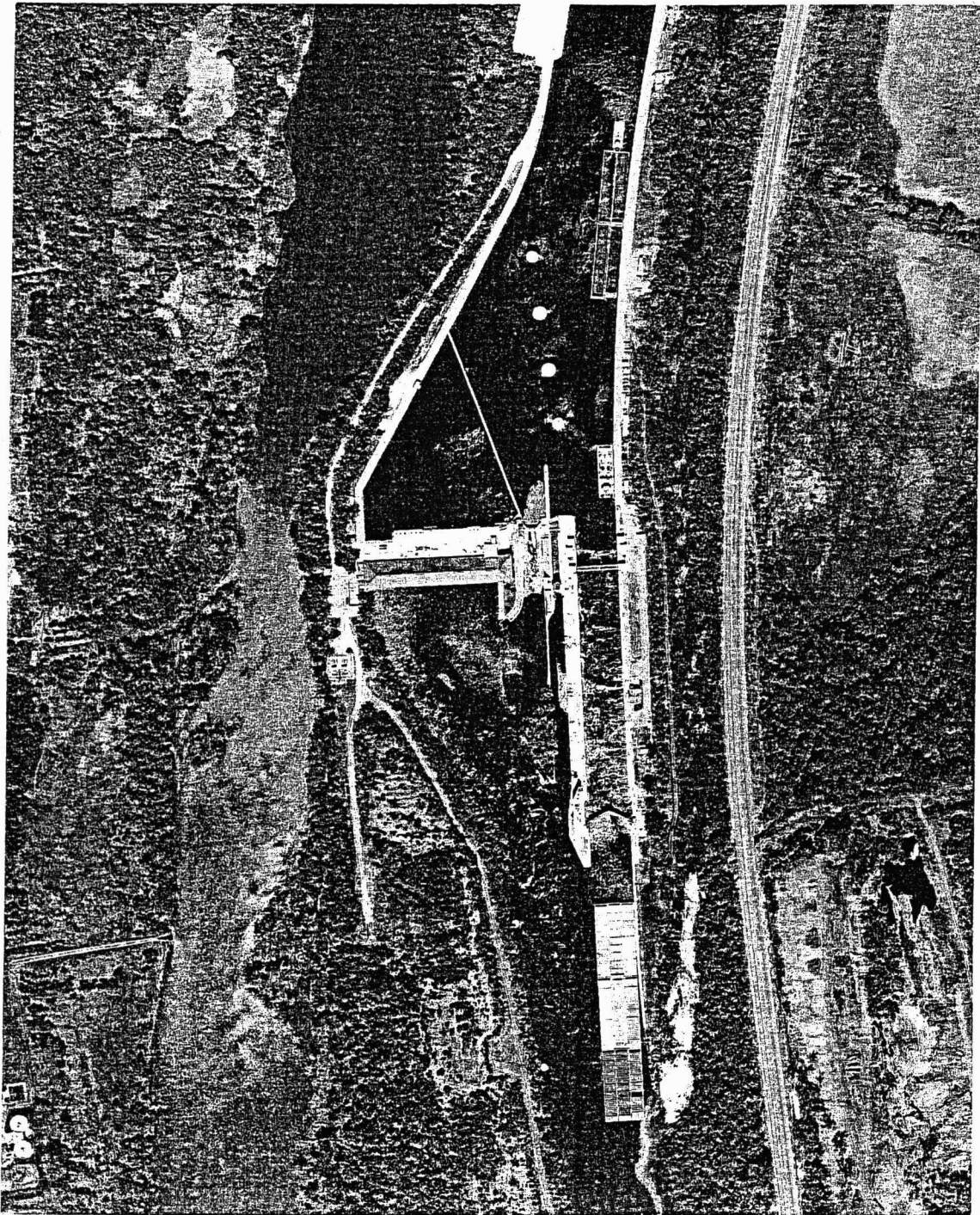


Figure 8. Aerial overview, Lockport Lock, Dam, and Power House Historic District, Will County, Illinois (*Photographed 1995*).

UNITED STATES DEPARTMENT OF THE INTERIOR
NATIONAL PARK SERVICE

NATIONAL REGISTER OF HISTORIC PLACES
EVALUATION/RETURN SHEET

REQUESTED ACTION: NOMINATION

PROPERTY Lockport Lock, Dam and Power House Historic District
NAME:

MULTIPLE Illinois Waterway Navigation System Facilities MPS
NAME:

STATE & COUNTY: ILLINOIS, Will

DATE RECEIVED: 1/26/04 DATE OF PENDING LIST: 2/13/04
DATE OF 16TH DAY: 2/28/04 DATE OF 45TH DAY: 3/10/04
DATE OF WEEKLY LIST:

REFERENCE NUMBER: 04000167

REASONS FOR REVIEW:

APPEAL: N DATA PROBLEM: N LANDSCAPE: N LESS THAN 50 YEARS: N
OTHER: N PDIL: N PERIOD: N PROGRAM UNAPPROVED: N
REQUEST: Y SAMPLE: N SLR DRAFT: Y NATIONAL: Y

COMMENT WAIVER: N

ACCEPT RETURN REJECT MAR 10 2004 DATE

ABSTRACT/SUMMARY COMMENTS:

Entered in the
National Register

Not returned.

RECOM./CRITERIA *Return*

REVIEWER *Soland*

DISCIPLINE *Historic*

TELEPHONE _____

DATE *3/9/04*

DOCUMENTATION see attached comments Y/N see attached SLR Y/N

If a nomination is returned to the nominating authority, the nomination is no longer under consideration by the NPS.



POWER HOUSE - LOCKPORT

FIG. 18

Lockport Lock, Dam + Powerhouse District

Power House, to NW

Will County, Ill

Mary Kate Rathbun

June 12, 1995

Roll no. 15, Frame 22 - Neg w/ COE

To NW

#1

Figure 3. Power House to northwest, Lockport Lock, Dam, and Power House Historic District,
Will County, Illinois (*Photographed by Mary Yeater Rathbun 1992*).



FIGURE 2

To S/SW

#2-3

Lockport Lock & Dam & Powerhouse District

Lock, to S/SW
will Co, IL

1992

Photog: M. V. Rathbun
Neg w/ COE

Figure 4. Lock to south/southwest, Lockport Lock, Dam, and Power House Historic District,
Will County, Illinois (*Photographed by Mary Yeater Rathbun 1992*).



~~FIG. 11~~

To NW

#3

Lockport Lock, Dam + Powerhouse District

Old lock, to NW

2001

will co. IL

photo: BJ Henning

neg w/ COE

Figure 5. Old lock to northwest Lockport Lock, Dam, and Power House Historic District,
Will County, Illinois (*Photographed by B. J. Henning 2001*).



U.S. ARMY
CORPS OF ENGINEERS

Lockport Lock + Dam District

Control Station, to S

Will County, Illinois

Mary Yeater Rathbun photos

Aug 24, 1992

Roll no. 1, frame 27 - neg w/ COF

South ~~photos~~

~~to S~~

~~#2~~ #4

Figure 6. Control Station to south Lockport Lock, Dam, and Power House District,
Will County, Illinois (*Photographed by Mary Yeater Rathbun 1992*).



Lockport Lock Dam Powerhouse Distr.
Maintenance Bldg, to NE
Will Co, IL

2001

photog: BJ Henning
neg w/ COE

#5

Figure 7. Maintenance building to northeast, Lockport Lock, Dam, and Power House Historic District, Will County, Illinois (*Photographed by B. J. Henning 2001*).



Fr. 3-71

15 May 95

ILL WWS

Lockport L/D

#7
Aerial view