

United States Department of the Interior
National Park Service

National Register of Historic Places Registration Form

This form is for use in nominating or requesting determinations for individual properties and districts. See instructions in *How to Complete the National Register of Historic Places Registration Form* (National Register Bulletin 16A). Complete each item by marking "x" in the appropriate box or by entering the information requested. If an item does not apply to the property being documented, enter "N/A" for "not applicable." For functions, architectural classification, materials and areas of significance, enter only categories and subcategories from the instructions. Place additional entries and narrative items on continuation sheets (NPS Form 10-900a). Use a typewriter, word processor, or computer, to complete all items.

1. Name of Property

historic name Dresden Island Lock and Dam Historic District

other names/site number Lock & Dam 4

2. Location

street & number 7521 North Lock Road [N/A] Not for publication

city or town Morris [N/A] vicinity

state Illinois code IL county Grundy code 063 zip code 60436

3. State/Federal Agency Certification

As the designated authority under the National Preservation Act, as amended, I hereby certify that this nomination request for determination of eligibility meets the documentation standards for registering properties in the National Register of Historic Places and meets the procedural and professional requirements set forth in 36 CFR Part 60. In my opinion, the property meets does not meet the National Register criteria. I recommend that this property be considered significant nationally statewide locally. (See continuation sheet for additional comments.)

Paul D Rubenstein Deputy FPO 3 Dec 2003
Signature of certifying official/Title Date

U.S. Army Corps of Engineers
State of Federal agency and bureau

In my opinion, the property meets does not meet the National Register criteria. (See continuation sheet for additional comments.)

Walter L. H... / SHPO 12-10-02
Signature of certifying official/Title Date

Illinois Historic Preservation Agency
State or Federal agency and bureau

4. National Park Service Certification

- I hereby certify that the property is:
- entered in the National Register.
 See continuation sheet.
 - determined eligible for the National Register.
 See continuation sheet.
 - determined not eligible for the National Register.
 - removed from the National Register.
 - other, (explain): _____

Edson Beall
Signature of the Keeper

Date of Action
MAR 10 2004

Dresden Island Lock and Dam Historic District
Name of Property

Grundy Co., IL
County and State

5. Classification

Ownership of Property (Check as many boxes as apply)	Category of Property (Check only one box)	Number of Resources within Property (Do not include previously listed resources in the count.)	
		Contributing	Noncontributing
<input type="checkbox"/> private	<input type="checkbox"/> building(s)	<u>1</u>	<u>3</u> buildings
<input type="checkbox"/> public-local	<input checked="" type="checkbox"/> district	<u>0</u>	<u>0</u> sites
<input type="checkbox"/> public-State	<input type="checkbox"/> site	<u>3</u>	<u>0</u> structures
<input checked="" type="checkbox"/> public-Federal	<input type="checkbox"/> structure	<u>0</u>	<u>0</u> objects
	<input type="checkbox"/> object	<u>4</u>	<u>3</u> Total

Name of related multiple property listing
(Enter "N/A" if property is not part of a multiple property listing.)

Number of contributing resources previously listed in the National Register

Historic Resources of the Illinois Waterway, 1808-1951

0

6. Function or Use

Historic Functions
(Enter categories from instructions)

Current Functions
(Enter categories from instructions)

Transportation: water-related

Transportation: water-related

7. Description

Architectural Classification
(Enter categories from instructions)

Materials
(Enter categories from instructions)

Other: lock and dam

foundation Timber pile

No style: control station

walls Concrete

Brick

roof Asphalt

other Gates: steel

Machinery: steel

Narrative Description

(Describe the historic and current condition of the property on one or more continuation sheets.)

United States Department of the Interior
National Park Service
National Register of Historic Places
Continuation Sheet

Dresden Island Lock & Dam Historic District
Grundy County, IL

Section number 7 Page 1

The Dresden Island Lock and Dam Historic District includes four contributing resources. There are three structures (lock, auxiliary lock, and dam) and one building directly associated with lock and dam operations (control station). The modern comfort station (for public use), workshop, and storage building are all noncontributing resources. Landscape elements such as mooring piers as well as minor elements (such as electric cart storage building, control stands, and machinery for operating lock gates and valves) were not counted, for their presence and role in lock and dam operation are ancillary.

The Dresden Island facility is located on the Illinois River 271.5 river miles from Grafton and the Mississippi River to the south. Its nearest upstream neighbor, the Brandon Road Lock and Dam, is just 14.5 miles away, a reflection of the relatively precipitous nature of the waterway at this point compared to downstream topography. The immediate area is flat, rural, and covered with vegetation. Tree cover largely masks the array of large scale power lines, and the setting is decidedly rural. Unlike the facility at Brandon Road, the site is flat and low to the water.

Lock

Begun by the State of Illinois and completed by the US Corps of Engineers, the lock, which has a lift of 22', was placed in operation in 1933. Like those at Lockport, Brandon Road, Marseilles, and Starved Rock, it is an Ohio River Standard navigation lock with a 110 foot x 600 foot chamber. Miter gates are located both upstream and downstream. Walter Mickle Smith was Chief Design Engineer for the Illinois Waterway project of which this lock is a part and is considered the designer of the facility.

The lock is watered by ten rectangular side ports (5' x 3'6") located along the bottom of the lock walls. Four Tainter valves, one located at each end of the main penstock and extending the full length of each wall, control flow through the ports. There are upstream and downstream guidewall extensions to both lock walls that are used for maneuvering barge traffic in and out of the lock. The lock consists of reinforced concrete walls and steel gates operated by gears and electric motor assemblies.

Auxiliary or Future Lock

Unlike all other locks in the Illinois Waterway navigation system, the Dresden Island has an incomplete auxiliary lock between the main lock and the dam. At the time of construction, it was easier to construct the partial section of the auxiliary lock. However, funding shortfalls followed by changes in how the Corps operated the facility prompted abandonment of the concept, and the auxiliary lock was never completed. It has partial walls for the downstream end of a standard

United States Department of the Interior
National Park Service
National Register of Historic Places
Continuation Sheet

Dresden Island Lock & Dam Historic District
Grundy County, IL

Section number 7 Page 2

navigation lock with a 110 foot width as well as a concrete arch dam (the arch is clearly visible in aerial views) in place of downstream lock gates.

Dam

The 1,505.5 foot long concrete and earth dam is composed of a 500 foot fixed earthen embankment, a 300 foot concrete pier dam designed to contain 14 (16' x 15') single leaf, vertical lift headgates, with a 48 foot concrete ice chute immediately south of that, and a 620 foot concrete pier dam containing nine (50' wide x 16' tall) Tainter gates south of that, followed by a 37.5 foot concrete spillway. The dam headgates with bays were designed to accommodate a hydroelectric power facility, but no power house was ever built, and the headgates were filled with concrete in 1984.

Located above the dam's ice chute is a 540 square foot one room, one story, flat-roofed dam boiler house. Of utilitarian design, it has a side chimney, metal multiple pane windows, and concrete molding. The building contains a boiler that was used to thaw out dam gates so they could be moved in winter weather.

Control Station

Designed by State of Illinois personnel but probably constructed by the US Army Corps of Engineers, the control station is also known as the control house and the lock house. The building was constructed in the course of overall lock construction, from 1929 to 1933. The one story building set on a raised basement is essentially rectangular but has a centered gabled bay on the lock side and an additional gable on the opposite, landward side as well. Located facing the lock, the centered bay allowed workers to monitor lock activities.

The use of gables with concrete parapets imparts a rather domestic impression reminiscent of the Jacobethan style, and the use of red face brick and a chimney at one gable end furthers this impression. However, window placement and the use of contrasting concrete belt courses for sills, lintels, and water course impart a more utilitarian function while attractively unifying the design.

Functioning as the administrative and operational hub, the control station is the dominant building in the district and is fundamental to lock and dam operations. The control stations at Lockport, Brandon Road, Dresden Island, Marseilles, and Starved Rock are nearly identical.

United States Department of the Interior
National Park Service
National Register of Historic Places
Continuation Sheet

Dresden Island Lock & Dam Historic District
Grundy County, IL

Section number 7 Page 3

Noncontributing Resources

Buildings of recent vintage consist of the comfort station (1972), workshop (1973), and storage building (1992). None was designed with the materials, scale, or details of original resources in the district in mind. All three buildings are relatively small in scale and not strongly intrusive on the distinctive characteristics of the district as a whole.

Alterations

Alterations are typical and expected for a still operating lock and dam facility. For example, lock walls were resurfaced and the lock was rewired in 1978. Shortly thereafter the lower guidewall was rebuilt. In 1981 the shape of the lower end of the lock was changed to better protect barges that came in contact with it. Lock gate operating machinery was replaced in 1985, while the valve operating machinery had been replaced in 1969. In 1995 two gates were replaced and additional minor changes were installed, such as new anchor pins. As noted above, dam headgates were filled with concrete in 1984. However, they had never been operable.

The control station originally had a ceramic tile roof which has been replaced with asphalt shingles. Windows are not original, and a small flat-roofed entry canopy has been added. Changes, including a new door and surrounding panel at the basement entry, are not prominent.

8. Statement of Significance

Applicable National Register Criteria

(Mark "x" in one or more boxes for the criteria qualifying the property for National Register listing.)

A Property is associated with events that have made a significant contribution to the broad patterns of our history.

B Property is associated with the lives of persons significant in our past.

C Property embodies the distinctive characteristics of a type, period, or method of construction or represents the work of a master, or possesses high artistic values, or represents a significant and distinguishable entity whose components lack individual distinction.

D Property has yielded, or is likely to yield, information important in prehistory or history.

Criteria Considerations
(Mark "x" in all the boxes that apply.)

Property is:

A owned by a religious institution or used for religious purposes.

B removed from its original location.

C a birthplace or grave.

D a cemetery.

E a reconstructed building, object, or structure.

F a commemorative property.

G less than 50 years of age or achieved significance within the past 50 years.

Areas of Significance

(Enter categories from instructions)

Transportation

Maritime History

Engineering

Period of Significance

1929-1951

Significant Dates

1933

Significant Person

(Complete if Criterion B is marked above)

N/A

Cultural Affiliation

N/A

Architect/Builder

Smith, Walter Mickle

Narrative Statement of Significance

(Explain the significance of the property on one or more continuation sheets.)

9. Major Bibliographical References

Bibliography

(Cite the books, articles, and other sources used in preparing this form on one or more continuation sheets.)

Previous documentation on file (NPS):

preliminary determination of individual listing (36 CFR 67) has been requested

previously listed in the National Register

previously determined eligible by the National Register

designated a National Historic Landmark

recorded by Historic American Buildings Survey # _____

recorded by Historic American Engineering Record # _____

Primary location of additional data:

State Historic Preservation Office

Other State agency

Federal agency

Local government

University

Other

Name of repository:

US Army Corps Engineers, Rock Island

United States Department of the Interior
National Park Service
National Register of Historic Places
Continuation Sheet

Dresden Island Lock & Dam Historic District
Grundy County, Illinois

Section number 8 Page 4

Statement of Significance

The Dresden Island Lock and Dam Historic District is significant under National Register Criteria A and C as examples of property types *lock, dam, and control station* within the Illinois Waterway Navigation System Multiple Property Listing. Constructed between 1929 and 1933, the district became a crucial component of an integral slackwater system built to permit commercial barges and towboat access to the 336 miles of the Illinois Waterway between Chicago and the Mississippi River.

Proposed in 1905 as part of the Great-Lakes-to-the-Gulf deep waterway, construction on the present lock and dam began around 1929. Work proceeded, and the facility opened in 1933, along with four other locks and dams along the Illinois Waterway. The lock permitted increased barge traffic along the Illinois Waterway between Chicago and the Mississippi. In addition, it performed (and continues to perform) a vital function in maintaining adequate water levels at Lockport and Joliet.

The Dresden Island Lock and Dam Historic District is significant under Criterion A for its contribution to the long-term maritime, transportation, and industrial history of the Illinois Waterway. The lock and dam are crucial to the continuing use of river transportation, as discussed in the Multiple Property Submission, Historic Resources of the Illinois Waterway Navigation System, 1808-1951. An integral part of the Illinois Waterway navigation system, the historic district has enhanced industrial growth by providing the means for transporting materials on a large scale.

The Dresden Island Lock and Dam is also significant under Criterion C as a good representative example of US Army Corps of Engineers approved lock and dam construction of the period. The lock and dam retain original appearance and function. In the interests of continued operation, some equipment and surfaces have been replaced. Nonetheless, the Dresden Island Lock and Dam retain a high degree of integrity of location, design, setting, materials, workmanship, feeling, and association.

10. Geographical Data

Acreage of Property 23.4 acres

UTM References

(Place additional UTM references on a continuation sheet.)

1 [1]6 [3]9[3]1[7]6 [4]5[8]3[5]4[8] 2 [1]6 [3]9[3]1[7]7 [4]5[8]3[5]0[2] Northing
Zone Easting Zone Easting

3 [1]6 [3]9[2]9[6]7 [4]5[8]3[4]8[3] 4 [1]6 [3]9[2]9[9]0 [4]5[8]3[4]1[3]

See continuation sheet

Verbal Boundary Description

(Describe the boundaries of the property on a continuation sheet.)

Boundary Justification

(Explain why the boundaries were selected on a continuation sheet.)

11. Form Prepared By

name/title Barbara J. Henning

organization Illinois State Museum Society Date 2001

street & number Spring and Edwards Streets telephone 217/785-0134

city or town Springfield State IL zip code 62706

Additional Documentation

Submit the following items with the complete form:

Continuation Sheets

Maps

A USGS map (7.5 or 15 minute series) indicating the property's location.

A Sketch map for historic districts and properties having large acreage or numerous resources.

Photographs

Representative black and white photographs of the property.

Additional items

(Check with the SHPO or FPO for any additional items)

Property Owner

(Complete this item at the request of SHPO or FPO.)

name _____

street & number _____ telephone _____

city or town _____ state _____ zip code _____

Paperwork Reduction Act Statement: This information is being collected for applications to the National Register of Historic Places to nominate properties for listing or determine eligibility for listing, to list properties, and to amend existing listings. Response to this request is required to obtain a benefit in accordance with the National Historic Preservation Act, as amended (16 U.S.C. 470 et seq.).

Estimated Burden Statement: Public reporting burden for this form is estimated to average 18.1 hours per response including time for reviewing instructions, gathering and maintaining data, and completing and reviewing the form. Direct comments regarding this burden estimate or any aspect of this form to the Chief, Administrative Services Division, National Park Service, P.O. Box 37127, Washington, DC 20013-7127; and the Office of Management and Budget, Paperwork Reductions Projects (1024-0018), Washington, DC 20503.

United States Department of the Interior
National Park Service
National Register of Historic Places
Continuation Sheet

Dresden Island Lock & Dam Historic District
Grundy County, Illinois

Section number 9, 10 Page 5

Major Bibliographic References

Active Project Files. Rock Island District, US Army Corps of Engineers, Rock Island, Illinois.

Rathbun, Mary Yeater. *Architectural and Engineering Resources of the Illinois Waterway between 130th Street in Chicago and La Grange*. 2 vols. Report prepared for the Rock Island District, US Army Corps of Engineers. October 1996.

Additional UTM Coordinates

5. Zone 16, Easting 392753 Northing 4583390.000
6. Zone 16, Easting 392691 Northing 4583430.000
7. Zone 16, Easting 392691 Northing 4583482.000
8. Zone 16, Easting 392462 Northing 4583462.000
9. Zone 16, Easting 392465 Northing 4583591.000
10. Zone 16, Easting 392880 Northing 4583636.000
11. Zone 16, Easting 392865 Northing 4583908.000
12. Zone 16, Easting 392899 Northing 4583917.000
13. Zone 16, Easting 392933 Northing 4583632.000
14. Zone 16, Easting 393058 Northing 4583641.000
15. Zone 16, Easting 393062 Northing 4583536.000

Verbal Boundary Description

Beginning at the west end of the downstream guidewall, the district boundary follows the line of the guidewall at a distance far enough from the wall to include its landward berm, east to the fence. The boundary follows the fence line to the point where it meets the shore, just past the small service buildings which lies south of the point where the upstream guidewall meets the landward lock wall. From the fence/short point, the boundary goes straight north to a point which is far enough away from the guidewall to encompass part of Big Dresden island at its upstream end. Going around the tip of the island on its upstream side, the boundary follows the riverward side of the guidewall in a similar fashion to a point east of the lock gates, where the boundary turns north again to follow the line of the dam at a distance far enough from the dam to include all the upstream protuberances from the riverward lock wall. Once the boundary has reached the north end of the dam, it swings around the dam and turns back south to a point parallel with the end of the retaining wall on the east edge of Big Dresden Island. The boundary connects these two points with a straight line and then proceeds west far enough onto Big Dresden Island to include the back berm of this retaining wall. From there the boundary goes south across the dredged channel to a

United States Department of the Interior
National Park Service
National Register of Historic Places
Continuation Sheet

Dresden Island Lock & Dam Historic District
Grundy County, Illinois

Section number 9, 10 Page 6

point near the guidewall, and then swings around the end of the guidewall to meet the point at which this description began.

Verbal Boundary Justification

The historic property boundary for the Dresden Island Lock and Dam Historic District was drawn to include the primary extent historic components of the lock and dam complex.

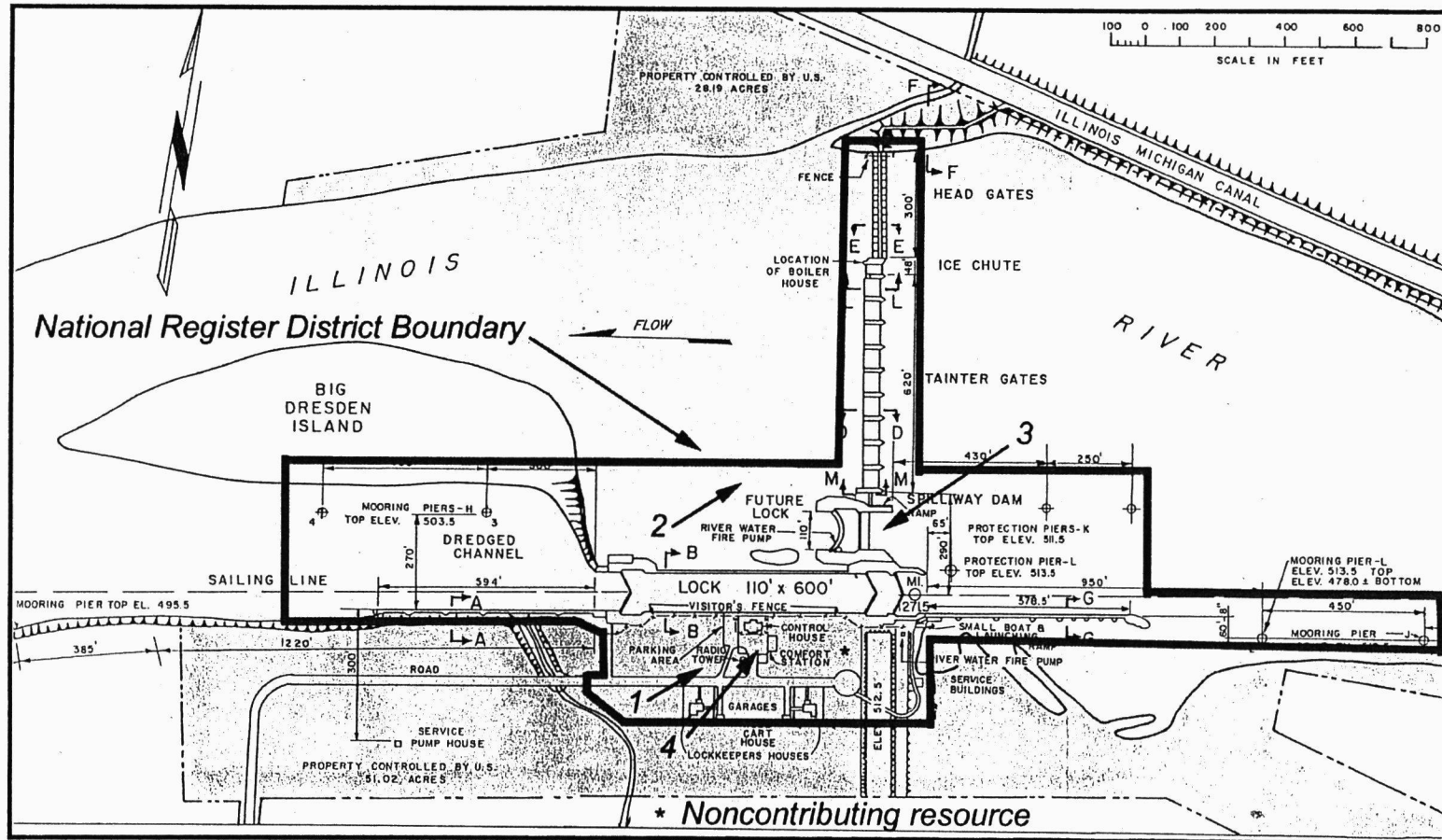


Figure 2. Dresden Lock and Dam Historic District. Map Source: September 30, 1980 map by Rock Island District Sheet 59, Illinois Waterway River and Harbor Project. Illustration shows number and orientation of photographs, noncontributing resources, and National Register District Boundary.

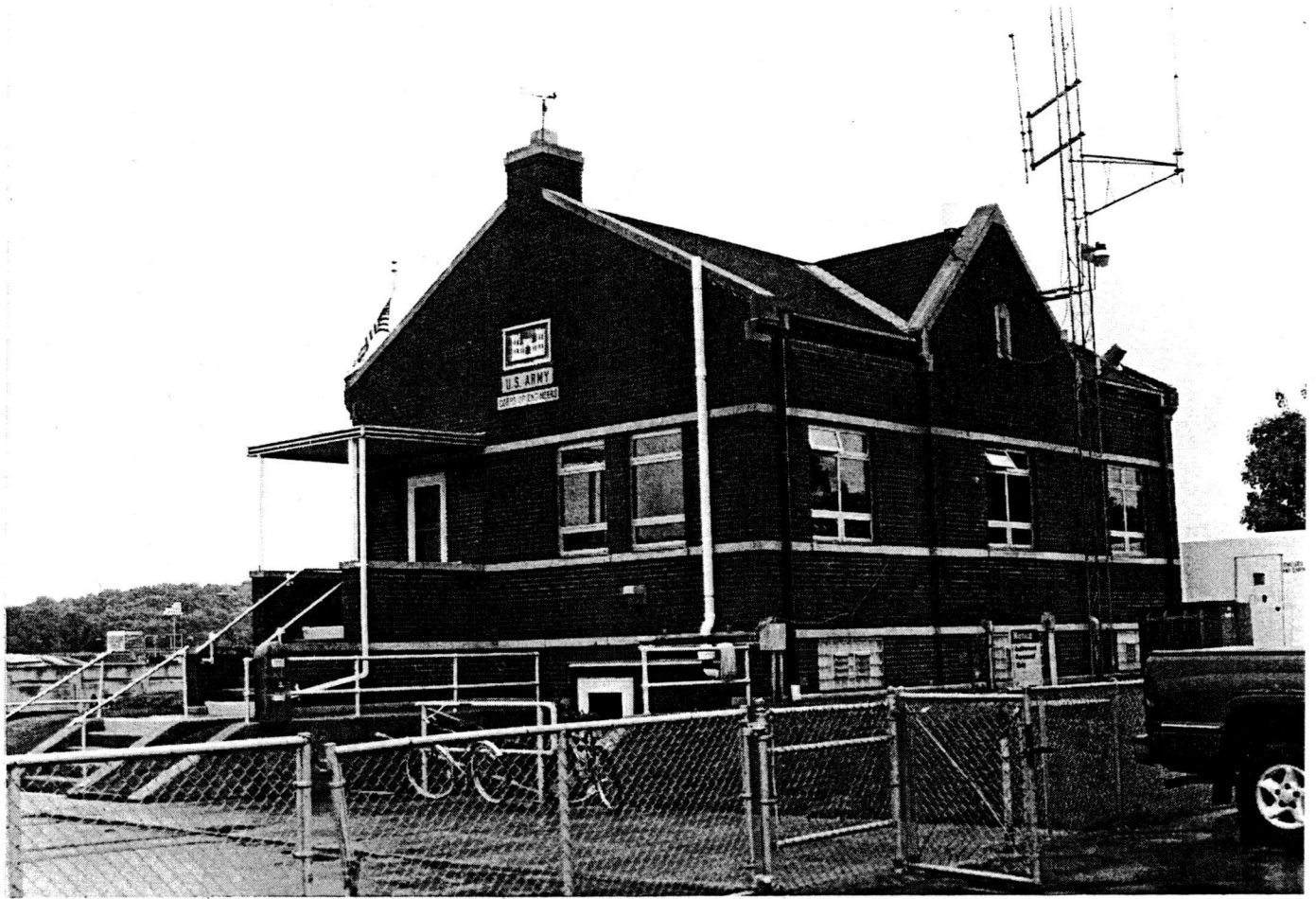


Figure 3. Control Station looking northeast, Dresden Island Lock and Dam, Grundy County, Illinois (Photographed by B. J. Henning 2001).

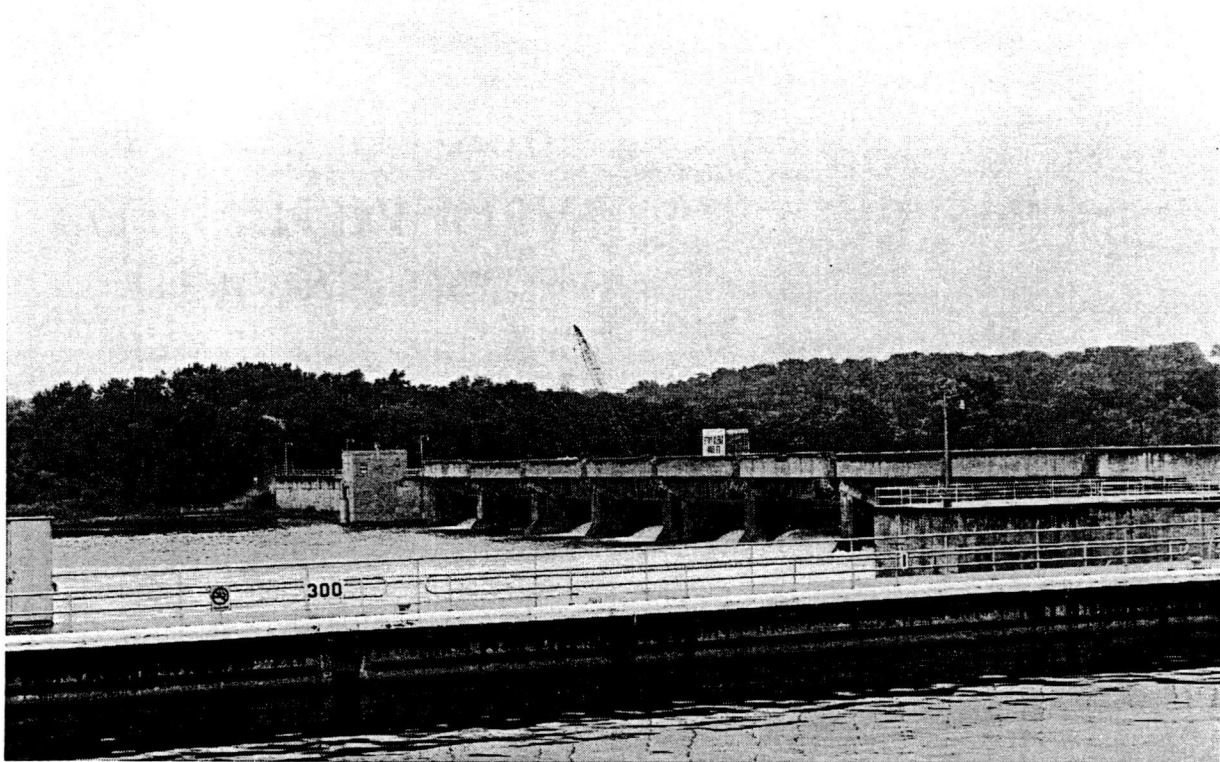


Figure 4. Dam and lock looking northeast, Dresden Island Lock and Dam, Grundy County, Illinois (*Photographed by Mary Yeater Rathbun 1992*).

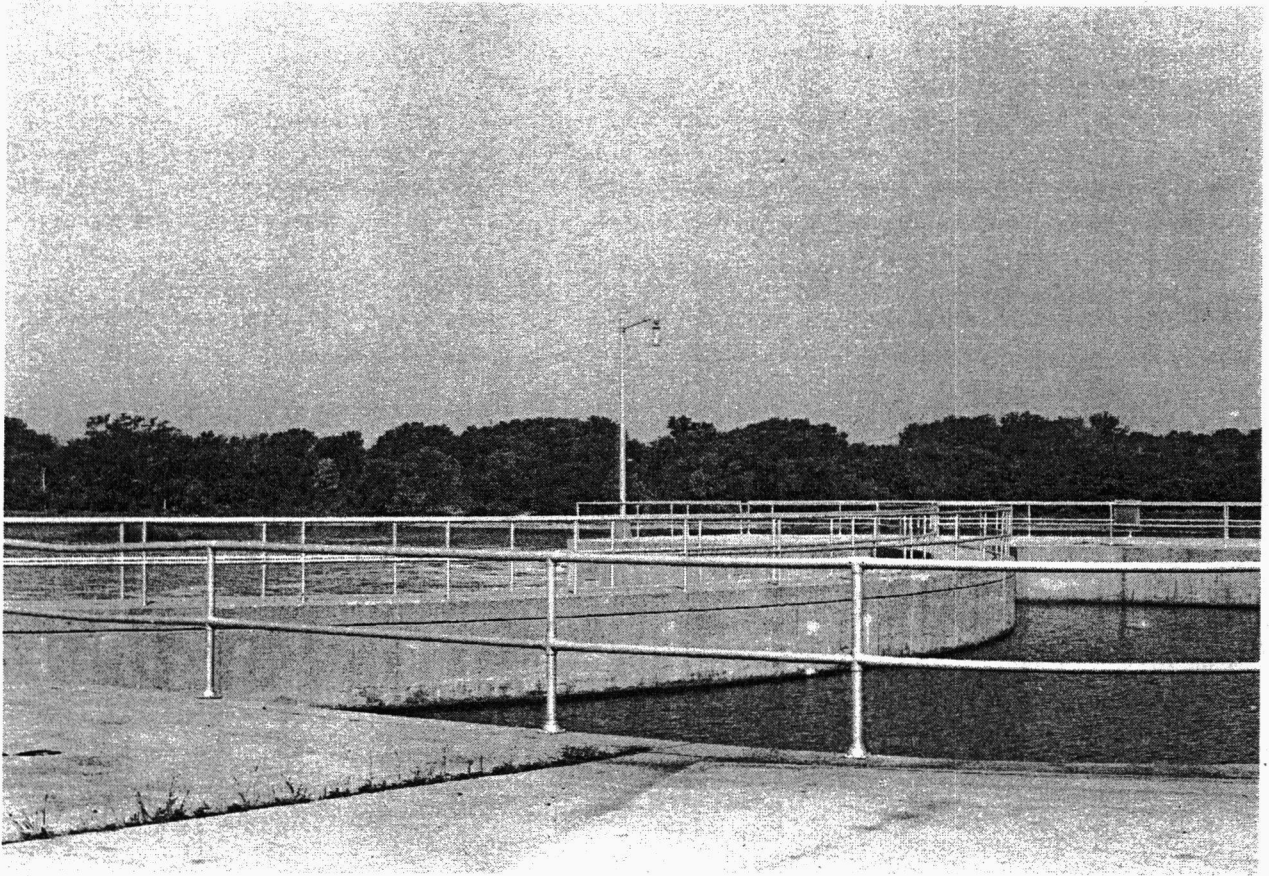


Figure 5. Auxiliary Lock looking southwest, Dresden Island Lock and Dam, Grundy County, Illinois (*Photographed by Mary Yeater Rathbun 1992*).

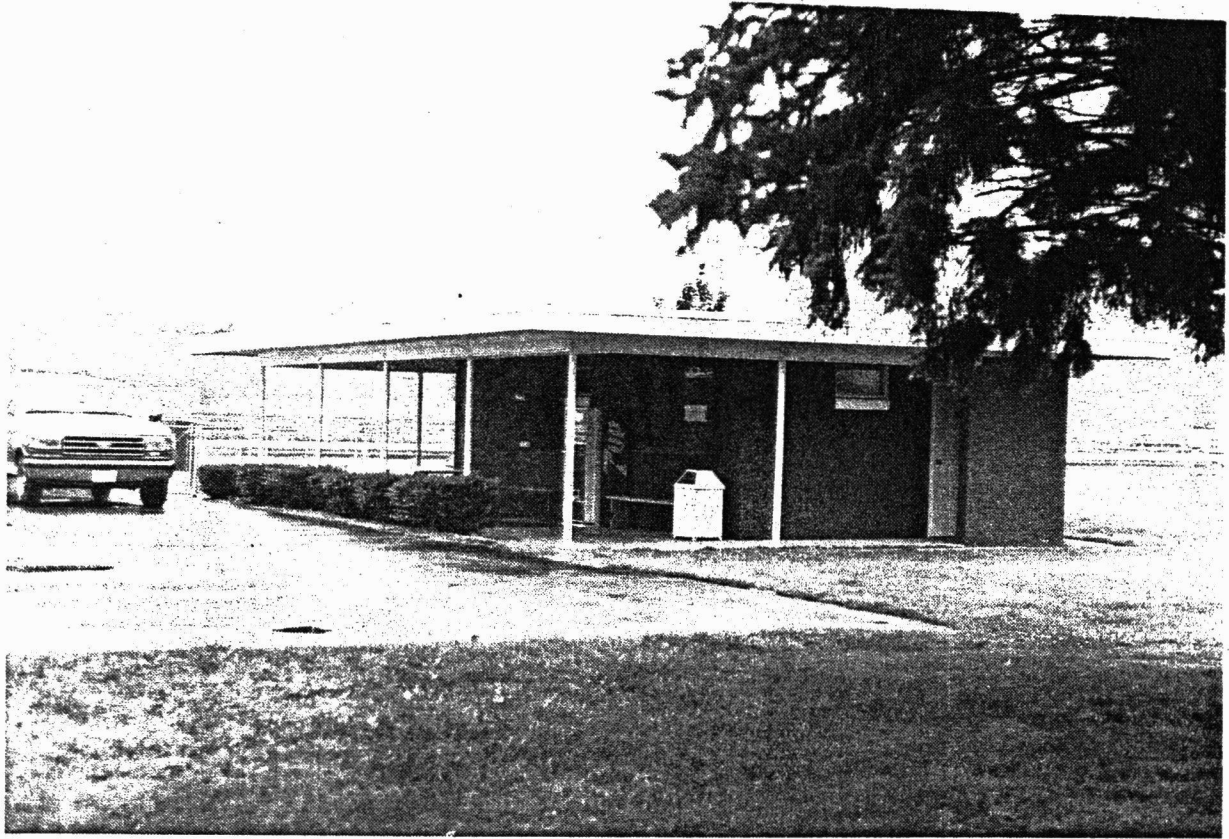
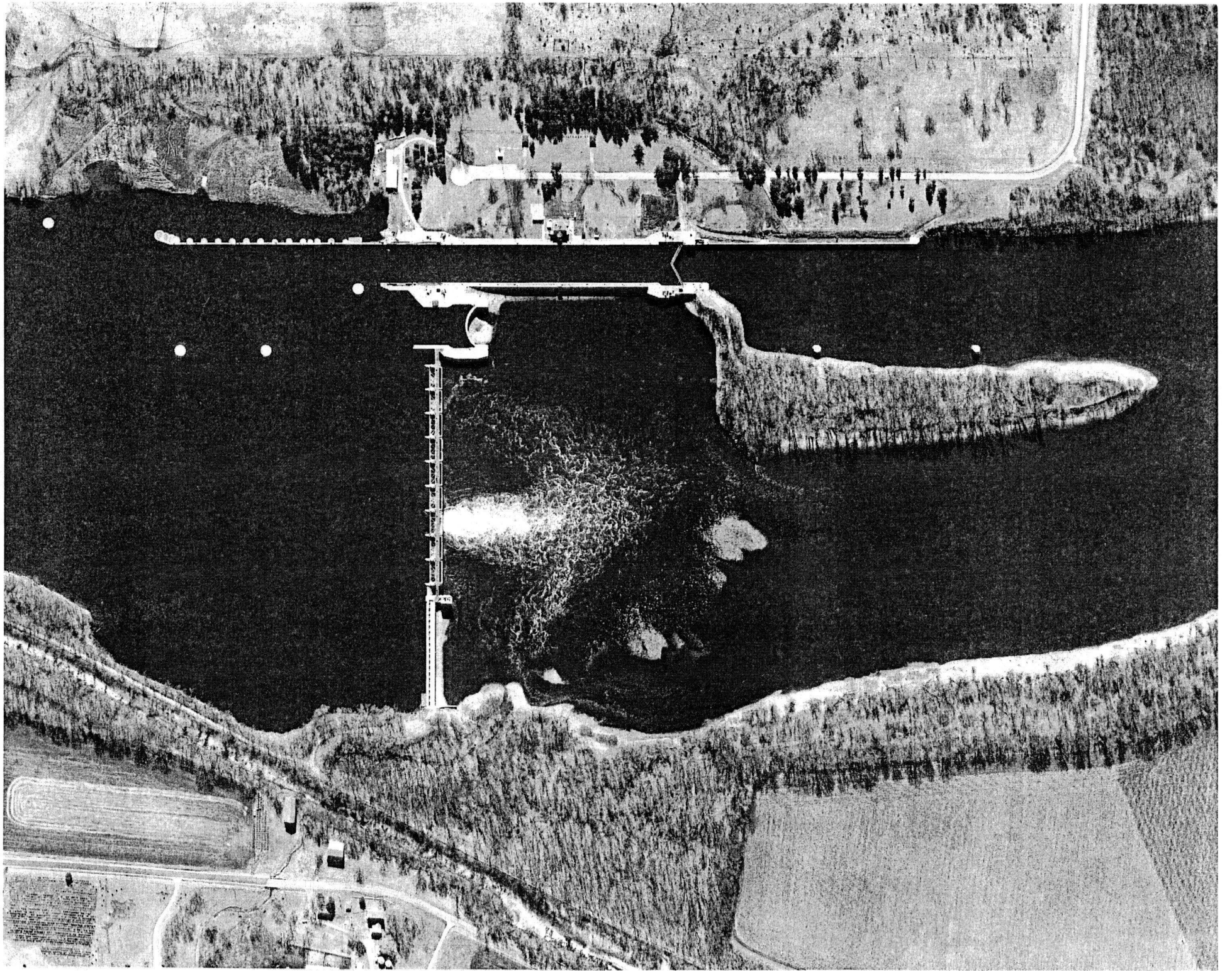


Figure 6. Comfort Station looking northeast, Dresden Island Lock and Dam, Grundy County, Illinois (*Photographed by Mary Yeater Rathbun 1992*).

Figure 7. Aerial overview, Dresden Island Lock and Dam,
Grundy County, Illinois (*Photographed 1996*).



UNITED STATES DEPARTMENT OF THE INTERIOR
NATIONAL PARK SERVICE

NATIONAL REGISTER OF HISTORIC PLACES
EVALUATION/RETURN SHEET

REQUESTED ACTION: NOMINATION

PROPERTY Dresden Island Lock and Dam Historic District
NAME:

MULTIPLE Illinois Waterway Navigation System Facilities MPS
NAME:

STATE & COUNTY: ILLINOIS, Grundy

DATE RECEIVED: 1/26/04 DATE OF PENDING LIST: 2/13/04
DATE OF 16TH DAY: 2/28/04 DATE OF 45TH DAY: 3/10/04
DATE OF WEEKLY LIST:

REFERENCE NUMBER: 04000164

REASONS FOR REVIEW:

APPEAL: N DATA PROBLEM: N LANDSCAPE: N LESS THAN 50 YEARS: N
OTHER: N PDIL: N PERIOD: N PROGRAM UNAPPROVED: N
REQUEST: Y SAMPLE: N SLR DRAFT: Y NATIONAL: Y

COMMENT WAIVER: N

ACCEPT RETURN REJECT MAR 10 2004 DATE

ABSTRACT/SUMMARY COMMENTS:

~~No D440 map~~
~~add to state map~~
~~add to state map~~

Entered in the
National Register

RECOM./CRITERIA Return Not returned.
REVIEWER Boland DISCIPLINE Historic
TELEPHONE _____ DATE 3/9/04

DOCUMENTATION see attached comments (Y/N see attached SLR Y/N

If a nomination is returned to the nominating authority, the nomination is no longer under consideration by the NPS.



U.S. ARMY
CORPS OF ENGINEERS

Authorized Personnel Only

Dresden Isl. Lock + Dam

Grundy Co IL

control stn, to NE

2001

BJ Hennings

neg: COE

#1

Figure 3. Control Station looking northeast, Dresden Island Lock and Dam,
Grundy County, Illinois (*Photographed by B. J. Henning 2001*).



Dresden Island L+D

Dam + Lock

Grundy Co., Illinois

Mary Yeater Rathbun

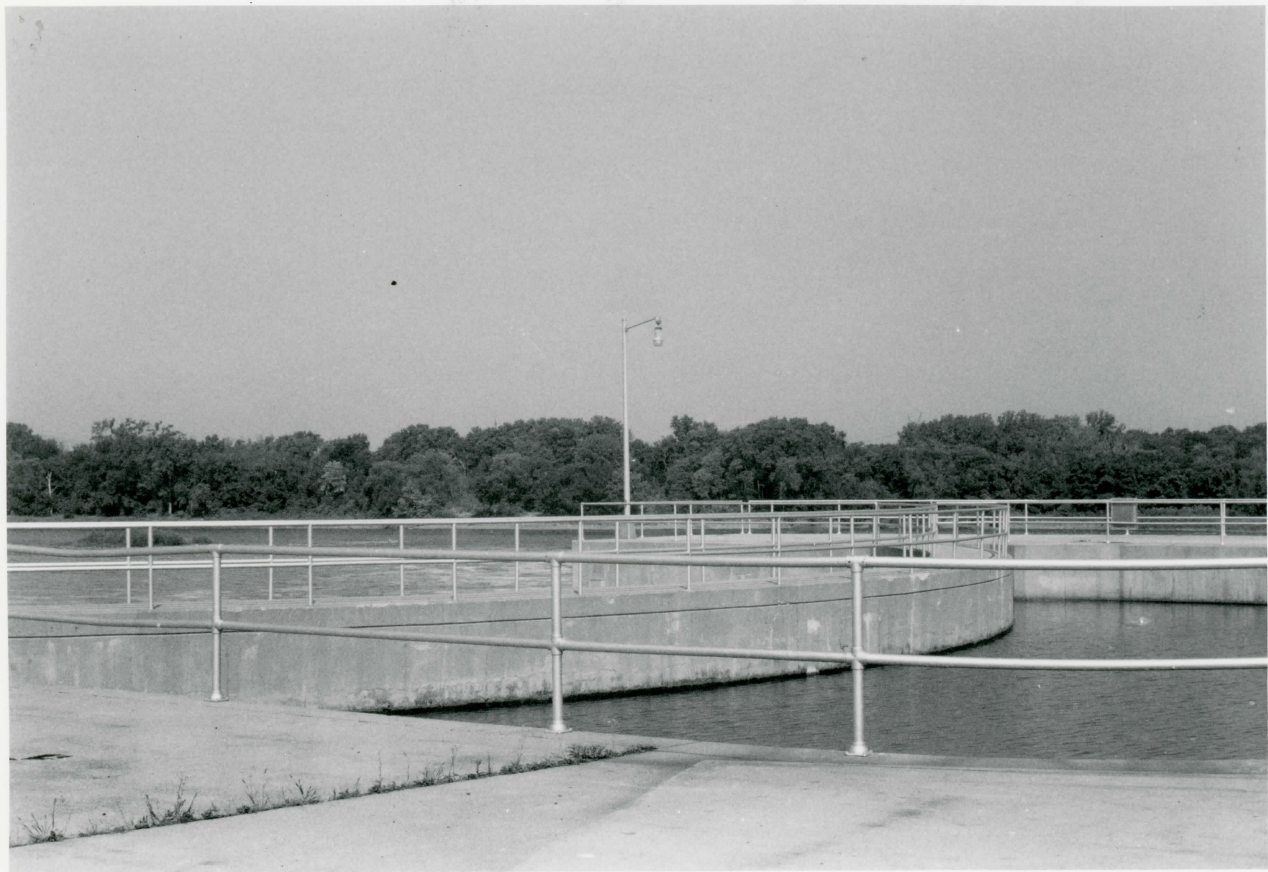
Aug 25, 1992

roll no. 3, frame 26

~~T~~DN



Figure 4. Dam and lock looking northeast, Dresden Island Lock and Dam,
Grundy County, Illinois (*Photographed by Mary Yeater Rathbun 1992*).



Prezler Island

Auxiliary Lock and Dam

Grundy County, Illinois

Mary Yeater Rathbun

Aug 25, 1992

Roll no. 5, Frame 16

To NW/NW (8) 3

Figure 5. Auxiliary Lock looking southwest, Dresden Island Lock and Dam,
Grundy County, Illinois (*Photographed by Mary Yeater Rathbun 1992*).



Dresden Island L+D

Confederate States

Grundy County, Illinois

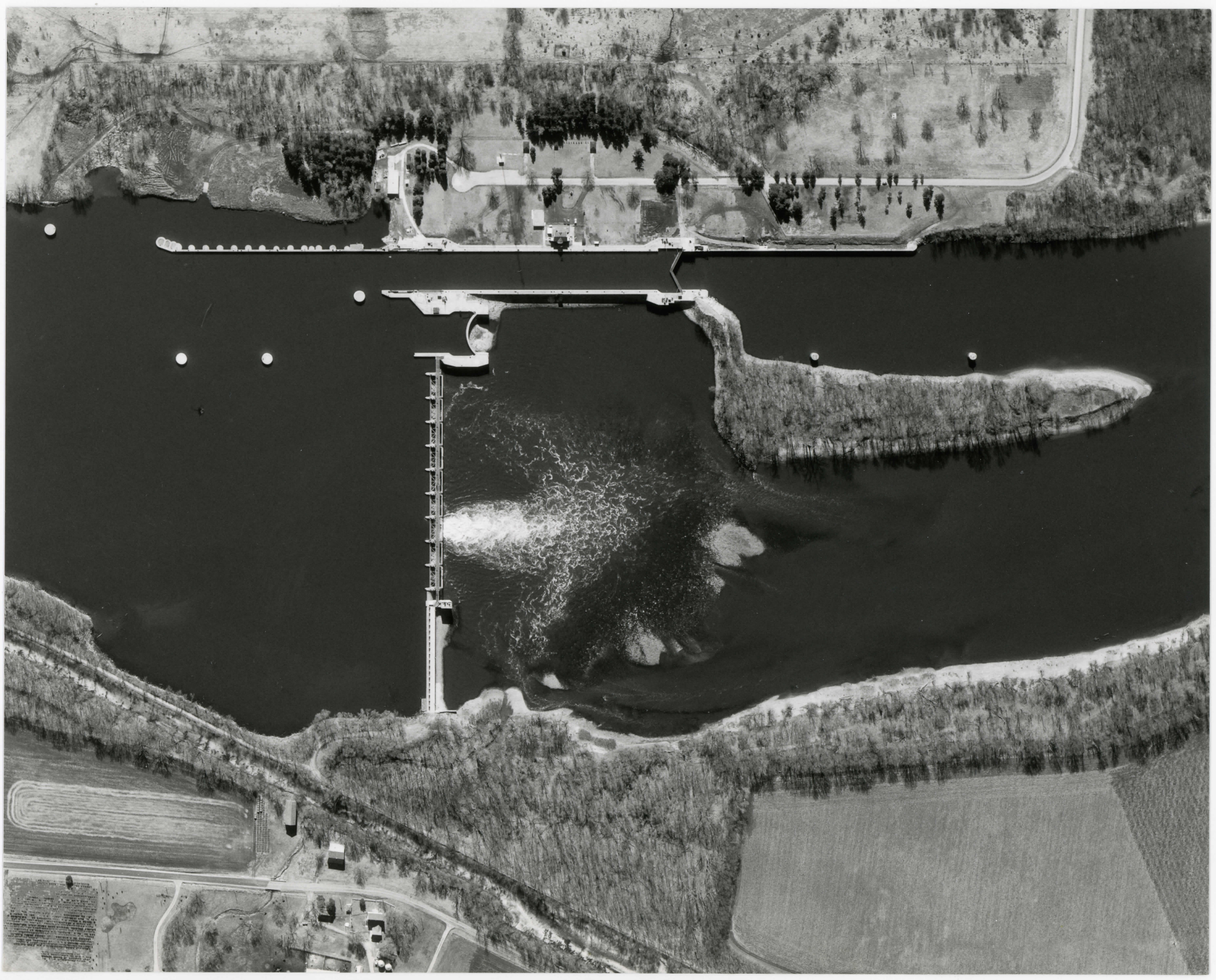
Mary Yeater Rathkum

Aug 25, 1992

Roll no. 3, frame 23

TONE (5) 4

Figure 6. Comfort Station looking northeast, Dresden Island Lock and Dam,
Grundy County, Illinois (*Photographed by Mary Yeater Rathbun 1992*).



Fr. 6-3

24 Feb 96

ILL WW

Dresden Island L/D

5