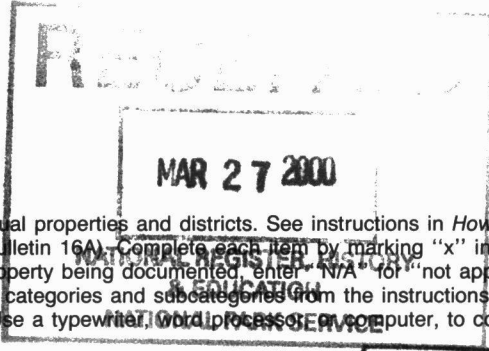


United States Department of the Interior
National Park Service

National Register of Historic Places
Registration Form

Resub



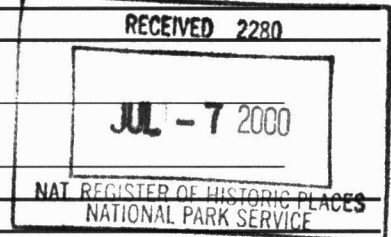
413

This form is for use in nominating or requesting determinations for individual properties and districts. See instructions in *How to Complete the National Register of Historic Places Registration Form* (National Register Bulletin 16A). Complete each item by marking "x" in the appropriate box or by entering the information requested. If an item does not apply to the property being documented, enter "N/A" for "not applicable." For functions, architectural classification, materials, and areas of significance, enter only categories and subcategories from the instructions. Place additional entries and narrative items on continuation sheets (NPS Form 10-900a). Use a typewriter, word processor, or computer, to complete all items.

1. Name of Property

historic name Library, University of Illinois at Urbana-Champaign

other names/site number Main Library



2. Location

street & number 1408 West Gregory Drive

not for publication

city or town Urbana

vicinity

state Illinois code IL county Champaign code 019 zip code 61801

3. State/Federal Agency Certification

As the designated authority under the National Historic Preservation Act, as amended, I hereby certify that this nomination request for determination of eligibility meets the documentation standards for registering properties in the National Register of Historic Places and meets the procedural and professional requirements set forth in 36 CFR Part 60. In my opinion, the property meets does not meet the National Register criteria. I recommend that this property be considered significant nationally statewide locally. (See continuation sheet for additional comments.)

William L. White / SHA 3-17-00
Signature of certifying official/Title Date

Illinois Historic Preservation Agency

State of Federal agency and bureau

In my opinion, the property meets does not meet the National Register criteria. (See continuation sheet for additional comments.)

Signature of commenting official/Title Date

State or Federal agency and bureau

4. National Park Service Certification

I hereby certify that the property is:

- entered in the National Register. See continuation sheet.
- determined eligible for the National Register. See continuation sheet.
- determined not eligible for the National Register.
- removed from the National Register.
- other, (explain:)

Signature of the Keeper

Date of Action

Beth Boland

8/11/00

Library, University of Illinois

Champaign, Illinois

Name of Property

County and State

5. Classification

Ownership of Property (Check as many boxes as apply)

- private, public-local, public-State, public-Federal

Category of Property (Check only one box)

- building(s), district, site, structure, object

Number of Resources within Property (Do not include previously listed resources in the count.)

Table with 2 columns: Contributing, Noncontributing. Rows for buildings, sites, structures, objects, Total.

Name of related multiple property listing (Enter "N/A" if property is not part of a multiple property listing.)

Number of contributing resources previously listed in the National Register N/A

University of Illinois buildings designed by Charles A. Platt

6. Function or Use

Historic Functions (Enter categories from instructions)

EDUCATION/library

Current Functions (Enter categories from instructions)

EDUCATION/library

7. Description

Architectural Classification (Enter categories from instructions)

Georgian Revival

Materials (Enter categories from instructions)

foundation Brick, walls Brick, Limestone, roof Slate, other

Narrative Description

(Describe the historic and current condition of the property on one or more continuation sheets.)

United States Department of the Interior
National Park ServiceNational Register of Historic Places
Continuation SheetSection number 7 Page 1

LIBRARY, UNIVERSITY OF ILLINOIS AT URBANA-CHAMPAIGN

7. Description

The front facade of the Georgian Revival Main Library faces east, just to the south of the main Quad of the University of Illinois. A modern underground library is located just to the east, beyond which are located the National Historic Landmark Morrow Plots. Armory Avenue and Gregory Hall, a classroom building, lie to the north, Gregory Drive is located to the south, and on the west a parking lot reaches from the back of the building to Sixth Street. The eastern portion is constructed of red brick with limestone trim and ornamental details with a green slate hipped roof with dormer windows; the bookstack wing on the west side has a flat roof and includes portions of buff and red brick. The eastern portion includes two interior light wells, forming a rectangular "figure 8" in plan, with the bookstack a separate projecting mass on the western side.

The Library as designed in 1924 by Charles A. Platt was constructed in three phases, and has received numerous subsequent additions. Phase one, constructed 1924-26, is "T" shaped in plan and consists of the eastern facade and the two easternmost bays of both the north and south facades, as well as the central spine of the "figure 8" and the easternmost 2 bays of the bookstack wing. The main Reading Room, east lobby, monumental staircases, and circulation hall are all contained in this phase of construction. Phase two, constructed 1926-28, consists of an "L" shaped area on the north half of the building, expressed as 10 bays of the north facade, as well as an additional 5-bay portion of the bookstack wing. Phase three, constructed 1927-29, consists of a symmetrical "L" on the south half of the building, expressed as 10 bays on the south facade (Refer to site plan).

Subsequent additions include two 5-bay bookstack additions in 1939-40 and 1957-58 which, on the exterior, use the same materials and window configurations of the 1920's portion. Additional bookstack additions in 1968-70 and 1982-84 were built in red brick with few windows. The finished facade on the north side was extended with an "L" shaped addition to the northwest in 1962-64 that added six bays and enclosed a new small inner courtyard. The basement level only addition of the air conditioning center in 1966-68 to the southwest has slightly altered the appearance of the south facade.

**United States Department of the Interior
National Park Service**

**National Register of Historic Places
Continuation Sheet**

Section number 7 Page 2

LIBRARY, UNIVERSITY OF ILLINOIS AT URBANA-CHAMPAIGN

East facade

The main eastern facade has 13 bays on two levels, plus attic and basement stories. The basement story lies approximately _ below grade. The three center bays of the main level are round headed arch openings to the recessed porch area behind. These openings are surrounded with rusticated stone. The entrance is approached from a concrete forecourt which includes two Lorado Taft sculptures. The remaining bays of the first floor have rectangular steel frame windows with stone surrounds and projecting sills which align with the molded brick watertable. Below each window sill a stone apron continues down to the ground, penetrated at the center by a basement window opening. These openings contain paired wood 4 over 4 double-hung windows partially sunken into a window well. The steel windows of the first floor are divided into nine sashes, 3 over 3 over 3, and each sash is further divided into four lights, 2 over 2. The two sashes in the lower corners are operable awning type windows. A stone belt course separates the first and second floors.

Each bay contains on the second floor a round arch window with stone surround and sill, with a projecting brick course around the stone. The three center windows, aligning with the entrance openings below, include projecting stone sills, and carved stone panels reaching from the sill down to the belt course. Each panel includes an inscription: in the left-hand panel: "The whole world here unlocks the experience of the past to the builders of the future;" in the center panel: "The University Library, erected by the State of Illinois for the advancement of learning, Anno Domini MCMXXIV;" and in the right-hand panel: "The hope of democracy depends on the diffusion of knowledge and wisdom." Floral swags are added to the belt course below each panel. Flanking the center window are a pair of projecting stone plaques. Below the remaining windows of the second floor are projecting bricks which define a panel below the sills. Each steel window frame is divided into nine sashes, 3 over 3 over 3, each with four lights, 2 over 2, with operable awning-type sashes as in the first floor windows. The additional arched portion is divided by three concentric arc muntins and five radial muntins. The central sash of the nine contains a stained glass depiction of an early printer's mark, each window unique.

United States Department of the Interior
National Park ServiceNational Register of Historic Places
Continuation SheetSection number 7 Page 3

LIBRARY, UNIVERSITY OF ILLINOIS AT URBANA-CHAMPAIGN

A dentilated stone cornice tops off the wall. A green slate hipped roof rises above, with eleven segmental arch dormers, one corresponding to each bay below, except for the two end bays. Each dormer contains a pair of wood 4 over 4 double-hung windows, and the sides and roof of the dormer are covered in metal plating. Four monumental brick chimneys rise above the roofline, centered between the second and third, the fifth and sixth, the eighth and ninth, and the eleventh and twelfth bays. Four copper downspouts with ornamental scuppers complete the eastern facade.

South facade

The brick south facade of the main portion of the library is twelve bays wide. The two easternmost bays project outward and are part of the eastern mass of the building. The windows of these two bays are treated identically to the east facade, and the roof has one dormer centered between the two bays. The remaining ten bays have three levels, plus an attic and basement story. The second and third floors of this portion are equivalent to the height of the second floor in the eastern portion. A projecting three-bay gable-roofed mass defines the southern entrance pavilion; to the west of this pavilion are two bays, leaving five bays between the pavilion and the projection of the eastern mass. The molded brick watertable continues along this facade. The basement level has wood 8 over 8 double-hung windows in window wells. The windows of the first floor are wood 12 over 12 double-hung windows; in the second floor, wood 12 over 12 segmental arch double-hung windows; in the third floor, wood 8 over 8 double-hung windows. The limestone belt course continues around from the eastern facade and becomes the continuous sill of the second floor windows. The windows of the second floor include brick hoods; the first and third floor windows have brick flat arches with limestone keystones. A continuous limestone sill also occurs at the third floor windows.

At the first floor, the central bay of the entrance pavilion has a pair of aluminum 8-light entry doors and a round arch multi-light transom above, surrounded by rusticated stonework. The second-floor window above the entry door has a limestone surround and a decorative stone plaque to either side. The gable includes a central round arch wood 8 over 8 double-hung window, the brick arch including stone springers and keystone. Flanking this window are two circular windows with projecting radial brick surrounds. The

United States Department of the Interior
National Park Service

National Register of Historic Places
Continuation Sheet

Section number 7 Page 4

LIBRARY, UNIVERSITY OF ILLINOIS AT URBANA-CHAMPAIGN

cornice is similar to the east facade, but does not include dentils. Flanking the gable are three segmental arch dormers to the right (east) and one to the left (west) with paired 4 over 4 wood double-hung windows. Outside the first dormers, a pair of brick chimneys also flank the gable. The 1966-68 addition of the air conditioning complex has extended the original facade to the west *at the basement level only* as far as the line dividing the 1968-70 bookstack addition from the earlier sections (see below).

North facade

The north facade is in general the mirror image of the south facade. The chief difference is that the first floor wood double-hung windows are divided 8 over 12 rather than 12 over 12, although the size of the masonry opening is identical. An addition in 1962-64 extended the entire facade to the west by six bays, with the windows treated identically to the original bays of this facade. A sunken loading dock exposes the eight westernmost bays of the basement level.

West facade

The western facade of the main portion of the library includes the gable ends of the north and south wings, flat roof connecting pieces, and the projecting mass of the bookstack wing. On the north side, the gable end includes two bays, with one wood 8 over 8 double-hung window and one metal door in the exposed basement level, two 8 over 12 windows in the first and second stories, two 8 over windows in the third story, and no windows in the gable end. The stone belt courses and cornice are discontinued. The flat-roofed red brick connecting portion contains three bays of wood double-hung windows on five levels, divided 8 over 8 in the basement, 8 over 12 in the first and second stories, and 8 over 8 in the third and fourth stories. The fourth story rises above the height of the main cornice and corresponds to the attic zone of the hipped roof portions.

On the south side, the gable end includes four bays. All the openings of the two outer bays are blind, but the two inner bays contain wood double-hung windows with stone sills on four levels: 12 over 12 in the first

United States Department of the Interior
National Park Service

National Register of Historic Places
Continuation Sheet

Section number 7 Page 5

LIBRARY, UNIVERSITY OF ILLINOIS AT URBANA-CHAMPAIGN

and second stories, 8 over 8 in the third story and gable. The addition of the air-conditioning complex means that there is no basement story on this elevation. As on the north side, the cornice and belt courses are discontinued at the corner, and there is no ornament around the windows. The flat-roofed portion is executed in buff-colored brick, with three bays of paired 8-light steel casement windows on five levels. The floor to floor height in this portion is equal to the bookstacks, where the height of two levels corresponds to one level of the main portion of the library.

Bookstack Wing

The flat roof bookstack wing was built in phases, gradually lengthening the building to the west. The two westernmost, i.e. the two newest, additions, built in 1968-70 and 1982-84, are red brick, with concrete basement story and concrete belt courses above the basement and at the parapet. There are no windows on the north and south sides of this portion, but on the west, three vinyl casement windows occur on each of five levels, with two windows and an exit door in the basement story. The eastern, i.e. older, portions of the bookstacks are built of buff brick, with paired 8-light steel casement windows facing north and south on eight levels. These portions were constructed in 1925-26 and 1927-29 (the original Platt design) and in 1939-40 and 1957-58. Slight variations in brick color reveal the various stages of construction. On the north side, only two bays of windows are visible in this portion, due to the extension of the main mass of the building, but on the south side, all 17 bays can be seen on the exterior. The floor to floor height of the bookstacks is much shorter, so that two bookstacks levels correspond to one main level in the rest of the library. This variation in brick color and floor height is an original part of the Platt design.

Interior

The interior spaces of the library vary significantly in quality, with a rich palette of materials and carefully considered ornamental details and sequences of spaces in the main public spaces, but with secondary and service areas treated more simply.

**United States Department of the Interior
National Park Service****National Register of Historic Places
Continuation Sheet**Section number 7 Page 6

LIBRARY, UNIVERSITY OF ILLINOIS AT URBANA-CHAMPAIGN

A recessed porch on the east facade is reached through the three round arch openings of the main entrance, with walls and floors finished in limestone. Three steel doors with 6 lights correspond to each arch; the arched fanlight above each group of doors is set into an overall rectangular transom. Between each group of doors are stone pilasters and two intermediate steel sash windows, with nine lights, 3 over 3 over 3, and a six light transom above. Entering into the main east lobby, double doors covered in leather with brass trimming to the north and south lead into departmental libraries. The lobby features limestone walls, terrazzo and pink marble flooring, and a plaster and beamed ceiling with some modern acoustic tile added. Two original brass chandeliers and a more recent wood display case comprise the only furnishings. Portraits of past Presidents of the University are hung on the walls.

The west wall of the lobby opens with two stone columns into a transitional space. After passing through modern aluminum-frame glass fire partition doors is the stair hall. The lower stair hall has pink marble flooring and limestone walls. A pair of steel 10-panel doors leads into the first floor corridor. A pair of monumental half-turn staircases to the left and right lead upward to the second floor. The treads and risers are marble, and an ornamental iron balustrade rises from the half-story landing to the second floor. Two windows at each of the landings look out into the interior courtyards and contain stained glass depictions of printers' marks. The wood paneled walls above the stairs include murals depicting the eastern, western, polar, and celestial hemispheres by Barry Faulkner. The ceiling of the upper stair hall includes ornamental plaster work, the walls are wood paneled, and the floor is terrazzo.

The upper stair hall is open to the west into the circulation hall. The central portion of this hall is separated from the lower, side areas by fluted Doric wood columns, with circular windows in the clerestory above and a segmental vaulted plaster ceiling. Two original brass chandeliers light the central space. The walls below the clerestory are paneled throughout and the floor is terrazzo.

Three pairs of leather doors with brass trimmings lead from the upper stair hall into the Reading Room on the east front of the building. The center pair of doors has a wood-frame fanlight above, and the wall around the doors is wood paneled with engaged fluted Doric wood columns. The Reading Room

United States Department of the Interior
National Park Service

**National Register of Historic Places
Continuation Sheet**

Section number 7 Page 7

LIBRARY, UNIVERSITY OF ILLINOIS AT URBANA-CHAMPAIGN

corresponds to the monumental eastern mass of the exterior, stretching the entire length from north to south. The walls are lined with wood bookcases, and windows high above floor level look to the outside on the north, east, and south, and three windows into each of the two main light wells on the west. The wall area around the doors back into the upper stair hall is covered with elaborately carved raised paneling and ornamental plaster. The ceiling is beamed, and the flooring is linoleum.

Inside the north and south entrances are vestibule and lobby spaces, each with a staircase. In the vestibules, the walls and floor are finished in limestone. Three eight-light steel doors with six-light transoms lead from the vestibule into the lobby. In the lobby, the walls are finished in limestone up to the height of the second floor, where typical flat plaster begins. The floor is multi-colored terrazzo. Modern fire doors mark the end of the lobby and the beginning of the first floor corridor. On the south wall of each lobby, the original double doors leading into the departmental libraries have been removed and replaced by modern exit-only fire escape doors. The staircase is entirely terrazzo up to the second floor, above which the treads landings are terrazzo and the risers are steel. Located in the south lobby is the plaster model of the bronze sculpture by Lorado Taft, "The Pioneers." In the north lobby is the plaster model of "The Gallaudet Group" by Daniel Chester French.

The first floor corridor forms a "T" shape, connecting the north and south lobbies directly, with a side corridor leading east to the main stair hall. The floor of this corridor is synthetic tile laid in a black-and-white diagonal checkerboard pattern. The plaster walls include wood picture rail, chair rail, and baseboard. The ceiling is flat plaster with brass pendant light fixtures, although suspended acoustic ceiling tile and fluorescent lighting has been added in portions of the corridor. Four wood 12 over 12 double-hung windows look into each of the interior light courts. The walls of the corridor accommodate temporary library displays as well as annual bronze plaques, starting in 1925, commemorating the University Honors graduates. The exterior walls of the light courts are visible mainly from the first floor corridor, and are finished simply in red brick with limestone sills and lintels for the windows.

The additional interior spaces of the library include various offices, a few seminar rooms, and a basement

**United States Department of the Interior
National Park Service**

**National Register of Historic Places
Continuation Sheet**

Section number 7 Page 8

LIBRARY, UNIVERSITY OF ILLINOIS AT URBANA-CHAMPAIGN

lecture hall, as well as library staff spaces, and also the following departmental libraries: Education & Social Science and Commerce libraries, on the first floor accessed from the east lobby; Applied Life Studies library, on the north side of the first floor in the 1962-64 addition; Slavic & East European library, on the south side of the second floor; English library, on the south side of the third floor; Asian, Latin American, and Afro-Americana libraries, on the third floor in small spaces off the north-south corridor; Library Science library, on the north side of the third floor; the Rare Book Room, on the third floor in the 1962-64 addition; Map & Geography, Classics, and Women's Studies libraries, on the east side of the fourth floor; Modern Languages library, on the south side of the fourth floor; History & Philosophy library, on the north side of the fourth floor; and the Newspaper library and University Archives, on the east side of the basement level.

These functional areas and the upper level corridors of the 1924 design are given much simpler treatment, with plain plaster walls and ceilings typical, sometimes with modern suspended acoustic tile added; linoleum flooring; and simple wood chair rails, picture rails, and baseboard. Three-panel wood doors are typical, sometimes with obscured glass for the upper panel, and three-light wood transoms above. At the entrances to some departmental libraries, double doors with a single five-light transom are provided. The interiors of the 1962-64 addition are similarly simple in expression, with exposed concrete block walls, vinyl tile floors, acoustic tile ceilings, metal door frames, and plain wood doors.

The finished basement spaces are even more plain, with bare concrete floors, gypsum board partition walls, and acoustic tile ceilings. The present configuration in the basement level of the east portion of the library dates from remodeling at the time of the construction of the undergraduate library, when an underground tunnel connecting the two buildings was created.

The bookstack wing has a functional expression on the interior, with exposed concrete floors. The older portions of the bookstack wing are supported by the steel structure of the bookshelves themselves; the 1982-84 portion is reinforced concrete structure with an automated compact shelving system. The older portions have a lower ceiling height than this newest section, where two new levels are equal in height to three levels in the older portions.

8. Statement of Significance**Applicable National Register Criteria**

(Mark "x" in one or more boxes for the criteria qualifying the property for National Register listing.)

- A** Property is associated with events that have made a significant contribution to the broad patterns of our history.
- B** Property is associated with the lives of persons significant in our past.
- C** Property embodies the distinctive characteristics of a type, period, or method of construction or represents the work of a master, or possesses high artistic values, or represents a significant and distinguishable entity whose components lack individual distinction.
- D** Property has yielded, or is likely to yield, information important in prehistory or history.

Criteria Considerations

(Mark "x" in all the boxes that apply.)

Property is:

- A** owned by a religious institution or used for religious purposes.
- B** removed from its original location.
- C** a birthplace or grave.
- D** a cemetery.
- E** a reconstructed building, object, or structure.
- F** a commemorative property.
- G** less than 50 years of age or achieved significance within the past 50 years.

Narrative Statement of Significance

(Explain the significance of the property on one or more continuation sheets.)

9. Major Bibliographical References**Bibliography**

(Cite the books, articles, and other sources used in preparing this form on one or more continuation sheets.)

Previous documentation on file (NPS):

- preliminary determination of individual listing (36 CFR 67) has been requested
- previously listed in the National Register
- previously determined eligible by the National Register
- designated a National Historic Landmark
- recorded by Historic American Buildings Survey # _____
- recorded by Historic American Engineering Record # _____

Areas of Significance

(Enter categories from instructions)

Architecture**Community Planning and Development****Period of Significance****1924-29 Architecture****1924 Community Planning and Development****Significant Dates****1924-26, 1926-28, 1927-29****Significant Person**

(Complete if Criterion B is marked above)

N/A**Cultural Affiliation****N/A****Architect/Builder****Platt, Charles Adams****Primary location of additional data:**

- State Historic Preservation Office
- Other State agency
- Federal agency
- Local government
- University
- Other

Name of repository:

University of Illinois archives

10. Geographical Data

Acreage of Property about 4 acres

UTM References

(Place additional UTM references on a continuation sheet.)

| | | | |
|---|------|-------------|---------------|
| 1 | 1 6 | 3 9 5 2 8 0 | 4 4 3 9 9 4 0 |
| | Zone | Easting | Northing |
| 2 | | | |

| | | | |
|---|------|---------|----------|
| 3 | | | |
| | Zone | Easting | Northing |
| 4 | | | |

See continuation sheet

Verbal Boundary Description

(Describe the boundaries of the property on a continuation sheet.)

Boundary Justification

(Explain why the boundaries were selected on a continuation sheet.)

11. Form Prepared By

name/title Karen A. Sullivan and Kenneth M. Itle
 organization Department of Urban and Regional Planning
University of Illinois at Urbana-Champaign date December 15, 1999
 street & number 111 Temple Hoyne Buell Hall telephone (217) 367-1855
611 Taft Drive
 city or town Champaign state Illinois zip code 61820

Additional Documentation

Submit the following items with the completed form:

Continuation Sheets

Maps

A **USGS map** (7.5 or 15 minute series) indicating the property's location.

A **Sketch map** for historic districts and properties having large acreage or numerous resources.

Photographs

Representative **black and white photographs** of the property.

Additional items

(Check with the SHPO or FPO for any additional items)

Property Owner

(Complete this item at the request of SHPO or FPO.)

name Board of Trustees of the University of Illinois
 street & number 352 Henry Administration
506 South Wright Street telephone (217) 333-1920
 city or town Urbana state Illinois zip code 61801

Paperwork Reduction Act Statement: This information is being collected for applications to the National Register of Historic Places to nominate properties for listing or determine eligibility for listing, to list properties, and to amend existing listings. Response to this request is required to obtain a benefit in accordance with the National Historic Preservation Act, as amended (16 U.S.C. 470 *et seq.*).

Estimated Burden Statement: Public reporting burden for this form is estimated to average 18.1 hours per response including time for reviewing instructions, gathering and maintaining data, and completing and reviewing the form. Direct comments regarding this burden estimate or any aspect of this form to the Chief, Administrative Services Division, National Park Service, P.O. Box 37127, Washington, DC 20013-7127; and the Office of Management and Budget, Paperwork Reductions Projects (1024-0018), Washington, DC 20503.

United States Department of the Interior
National Park Service

National Register of Historic Places Continuation Sheet

Section number 8 Page 8

LIBRARY, UNIVERSITY OF ILLINOIS AT URBANA-CHAMPAIGN

8. Statement of Significance

The University of Illinois at Urbana-Champaign's Library is significant to the University for its distinctive role in shaping the development of campus according to Charles A. Platt's master plan, and for its Georgian Revival style of architecture. The period of significance for the building is from its design in 1924 to completion of construction in 1929. The Library meets the National Register Criterion C as it pertains to the Registration Requirements for the Multiple Property Nomination of the University of Illinois buildings designed by Charles A. Platt. The Library meets Criterion C in the area of Community Planning and Development as a significant representation of the design characteristics and siting of buildings in Platt's master plan for the University. The Library also meets Criterion C in the area of Architecture as an excellent representative example of the Georgian Revival style. The nomination consists of one contributing building.

History

The University of Illinois founded the University Library in its establishing charter in 1867. The library opened in its original building, Library Hall, in 1868 with 1039 volumes and an initial grant of \$1000.¹ The library's collection and the University's population outgrew Library Hall within fifteen years of its opening. A new building to house the facility was constructed and dedicated on June 8, 1897. Named Altgeld Hall after the Governor at that time, the new library building was designed by Nathan C. Ricker, the head of the architecture program on campus. The Romanesque Revival library was three stories tall and constructed of Minnesota sandstone. With the growth of the University in a boom, the library constructed additions to the stacks in 1914 and 1918 with capacities of 600,000 and 164,000 volumes, respectively.²

The president of the University in 1912, Edmund J. James, called for an expansion of the library's holdings to one million volumes and for a new building to hold the collection. His goal was to "create a research

1. <http://www.library.uiuc.edu/help/orientation/history.asp>

2. Miriam A. Herron. "Library Began Sixty Years Ago on \$1,000 Grant by Trustees." *The Daily Illini*, Vol. LVI, No. 155 (March 13, 1927) 1,4.

**United States Department of the Interior
National Park Service****National Register of Historic Places
Continuation Sheet**Section number 8 Page 9LIBRARY, UNIVERSITY OF ILLINOIS AT URBANA-CHAMPAIGN

library on a par with those at the great German academic institutions.”³ The Senate Committee on the Library agreed with this proposal and in their 1912-1913 report stated “the committee is of the opinion that the University should make every effort to build up here a library of at least a million volumes in the next ten years; to accomplish this will require the expenditure of over one hundred thousand dollars a year for books.” The recommendation was approved by the Board of Trustees on April 7, 1913. The committee felt that the library’s accommodations were so lacking and far behind the general growth of the entire University that it seriously embarrassed the work of faculty and students in all departments. The facilities were “helplessly congested and deplorably overcrowded.” The earlier library erected in 1897 only accommodated 683 students and 87 instructors. In the school year of 1912-1913, the University had grown to 4330 students and over 450 instructors. In the Senate Report of 1916-1917, the committee again wrote of the much needed library expansion, the “present building is notably inadequate for our present needs in book-storage capacity, in study room facilities for students and faculty, and in work rooms for the staff.” One last plea for action came from the committee in their 1921-1922 Report to the Board of Trustees. The condition of the library’s bookshelves was crowded and the seating capacity in reading rooms was inadequate. Staff was beginning to box lesser used volumes because the shelves could not possibly hold all of the volumes in their current collection. Many class instructors were no longer requiring that students regularly use the library.⁴

The need for a new library building was apparent. It was important to the University that a plan for the library be settled on and proceeded with because the State of Illinois was discussing a new state library. The state would most likely have continued plans for a library for general state purposes if the University could not supply an adequate one. Also, competition over available construction funding was tight due to the plan for a complete agricultural group of buildings. This would have consumed most of the available University funds for many years to come.⁵

3. www.library.uiuc.edu/help/orientation/history.asp

4. The University of Illinois Senate Committee on the Library Reports 1912-1913, 1913-1914, 1916-1917, and 1921-1922.

5. University Archives Reference File, Library-Administrative Pre-1929 #1, Memorandum in Regards to the University Library, p. 3.

United States Department of the Interior
National Park Service

National Register of Historic Places Continuation Sheet

Section number 8 Page 10

LIBRARY, UNIVERSITY OF ILLINOIS AT URBANA-CHAMPAIGN

The University needed to establish plans for a new library quickly and it needed to be large enough to house a collection larger than other leading research institutions. Many great institutions were located near other research facilities, which allowed for sharing of these resources. The University of Illinois was located away from other such facilities and therefore needed its own independent collection. The University could not depend on other book centers.⁶

Action for the new library building was taken soon after Charles A. Platt was contracted as the consulting architect for the University's campus plan in 1921. He was commissioned as architect for the Library on April 11, 1923, by the University Board of Trustees. The general plans and sketches for the Library were accepted by the Board of Trustees on May 18, 1923, and Platt was instructed to continue with the development of the final plans.⁷ The Library was the second building on campus, after the Agriculture building, to be designed and commissioned by Platt. The first unit of the Library, consisting of the main circulation and reading spaces and the eastern portion of the bookstack wing, was occupied by staff and collection in 1926. With the added storage space, the Library continued book acquisitions to increase the resources available for the University's students and faculty.

The Library obtained its one-millionth volume in 1935. The need for another stacks addition was fast approaching. A letter from a Library staff member to the President of the University, Arthur Cutts Willard, explained that if there was not another addition made quickly, books would start having to be packed away in boxes until more space was provided. The third stack addition was completed in 1939-1940 and the Library was the fifth largest in the country.⁸ By 1945 the collection had reached nearly two million volumes.

6. Phineas L. Windsor. "Only 5 University Libraries Surpass One Here in Size." *Daily Illini, Student Newspaper of the University of Illinois*. Vol. LVI, No. 155 (March 13, 1927) 1.

7. University of Illinois Board of Trustee Meeting Minutes, April 11 and May 18, 1923.

8. www.library.uiuc.edu/help/orientation/history.asp

United States Department of the Interior
National Park Service

National Register of Historic Places
Continuation Sheet

Section number 8 Page 11

LIBRARY, UNIVERSITY OF ILLINOIS AT URBANA-CHAMPAIGN

Significance in Community Planning and Development

The siting of the Library reinforces Platt's master plan for the campus. The design characteristics that realize the plan were uniform cornice heights, roof pitch angles, and materials, and placement along major and minor axes. The placement of the Library went against the common idea that a university library should be the most monumental building on the campus, that it should occupy a dominating axial position, and that it should have four monumental facades. This traditional arrangement did not allow for the structure to expand as the library collection did. The Library was not on a dominant axial position but was one of many buildings lining the south campus plaza of Platt's plan and had open land left behind it to allow for additions.⁹ The placement of the east facing Library is on a north-south walkway just south of The Quad. "It is distinguished from the other [buildings] because of the greater scale of the building, due chiefly to the size of the windows, and because of the definite provision for additions."¹⁰ The allowance for additions to the Library was important because the University was in a period of significant growth (quadrupling its enrollment from 1913 to 1923) and needed to expand its collection to keep pace with the growing student and faculty populations. According to Allen S. Weller in his book *100 years of Campus Architecture*:

The new Library. . . is one of [Platt's] most distinguished achievements. With a grand staircase, high-ceilinged rooms, and beauty of detail, the Library represents a palatial concept of a great library. Beautiful brickwork, elegance in carving and paneling and a satisfying sweep in its proportions make the Library the focal element it was meant to be in the stately and ordered plan Platt developed for the University.¹¹

Significance in Architecture

The Library is a locally significant and representative example of Georgian Revival style architecture as developed by Platt on the University of Illinois campus. As was typical of the Platt buildings, the library uses red brick, limestone ornament, and green slate roofing on its monumental exterior facades. The use of buff

9. Keith N. Morgan. *Charles A. Platt: The Artist as Architect*. (New York: The Architectural History Foundation, 1985) p. 181.

10. *The Library Building*. (Urbana: The University of Illinois, 1929) Dedication booklet.

11. Allen S. Weller. *100 Years of Campus Architecture*. (Urbana: The University of Illinois Press, 1968) p. 20.

**United States Department of the Interior
National Park Service****National Register of Historic Places
Continuation Sheet**Section number 8 Page 12**LIBRARY, UNIVERSITY OF ILLINOIS AT URBANA-CHAMPAIGN**

colored brick and the total lack of any ornament on the bookstack wing is an unusual feature of the library, but it is in keeping with Platt's tendency to focus attention (and expense) on ornament at a few key locations, such as around the east entrance, while allowing the remaining spaces to be utilitarian in nature. Also, these buff-colored walls were meant to be eventually hidden behind formal Georgian Revival facades when future additions would effect the ultimate plan of the building. On the interior, the lobbies, Reading Room, and circulation hall were planned as permanent spaces with elaborately detailed interiors and higher quality materials, while other spaces were finished inexpensively. This range of quality is typical in Platt's buildings. The entrance to the east side of the Library is symmetrically disposed on the facade and set into a recessed porch. The three bays above the entrance and the doorways have more ornamentation such as projecting stone sills and carved stone panels with inscriptions. This is consistent with Platt's design for the entrances of his University buildings.

Integrity

The library building has not been altered so as to significantly detract from the major architectural style and campus planning characteristics. The original exterior design remains unchanged and almost all the original materials have been preserved. All of the windows and exterior doors are original, with the exception of the outer doors at the north and south entrances. The primary public spaces, such as the lobbies, circulation hall, and Reading Room, retain a remarkable degree of integrity, and remain in their original use. Some areas had suspended acoustic tile ceiling added in the 1960's when central air conditioning was installed in the library. Many of the original lighting fixtures were removed in favor of modern fluorescent lights, although the east lobby, main stair hall, and portions of the first floor corridor and circulation hall retain their original light fixtures. The plaster walls have been maintained in good condition throughout, and the woodwork retains its original stained finish throughout the building, except for one small area on the fourth floor where it has been painted. The terrazzo floors are in good condition, but the original linoleum flooring in the secondary spaces has deteriorated and in some places been replaced by vinyl asbestos tile. Minor remodeling has occurred in the secondary spaces of the building to accommodate the expanding departmental libraries, but since these secondary spaces were designed with less expensive materials to

**United States Department of the Interior
National Park Service**

**National Register of Historic Places
Continuation Sheet**

Section number 8 Page 13

LIBRARY, UNIVERSITY OF ILLINOIS AT URBANA-CHAMPAIGN

allow for this ease of reconfiguration, this does not detract from the significance of the architecture.

Platt envisioned his work as merely the beginning of a much larger library (Refer to site plan). The additions that have occurred to the library through the years have followed the general plan originally conceived. Where Platt proposed that a finished facade would be located, the additions have copied as precisely as possible the mass, materials, details, and style of the original building. The bookstack wing additions, although unornamented and not in the Georgian Revival style, do not detract from the integrity of the building since Platt's own bookstack wing was similarly utilitarian and unornamented, and since these areas still stop short of the theoretical complete facade of Platt's ultimate plan. Future additions could increase the ground plan of the library by about half again as much before the entire scheme is completed.

United States Department of the Interior
National Park Service

National Register of Historic Places
Continuation Sheet

Section number 9 Page 14

LIBRARY, UNIVERSITY OF ILLINOIS AT URBANA-CHAMPAIGN

9. Bibliography

Dedication of the Library Addition: October 11, 1984. Urbana: University of Illinois, 1984.

"Detail of Front Entrance [of the library]." *The Architect* 12 (June 1929) 253-256.

"Entrance to Reading Room." *The Architect* 3 (December 1924) 214.

"Final Study, Library." *The Architect* 2 (April 1924) 32.

Herron, Miriam A. "Library began sixty years ago." *The Daily Illini*, Vol. LVI, No. 155 (March 13, 1927) 1.

The Library Building. Urbana: The University of Illinois, 1929. [Dedication booklet.]

"Library building formally dedicated." *Illinois Alumni News*, Vol. 8, No. 2 (November 1929) 64.

Morgan, Keith N. *Charles A. Platt: The Artist as Architect.* New York: The Architectural History Foundation, 1985.

"The New Library, University of Illinois." *Libraries* 34 (1929): 503-506.

"Preliminary Study, Entrance to Reading Room." *The Architect* 3 (November 1924) 118.

Scheinman, Muriel. *Art Collecting at the University of Illinois.* Doctoral dissertation, University of Illinois, Urbana, 1981

"Total Cost \$5,000,000." *The Daily Illini*, Vol. LVI, No. 155 (March 13, 1927) 1.

"University of Illinois, Urbana." *The Architect* 9 (November 1927) 181-195.

Unlocking the Experience of the Past to the Builders of the Future. Brochure. Urbana: University of Illinois [1992].

Weller, Allen S. *100 Years of Campus Architecture at the University of Illinois.* Urbana: The University of Illinois Press, 1968.

Windsor, Phineas L. "Only five university libraries surpass one here in size." *The Daily Illini*, Vol. LVI, No. 155 (March 13, 1927) 1.

United States Department of the Interior
National Park Service

National Register of Historic Places Continuation Sheet

Section number 10 Page 15

LIBRARY, UNIVERSITY OF ILLINOIS AT URBANA-CHAMPAIGN

10. Verbal Boundary Description

Part of the NW $\frac{1}{4}$ of the NW $\frac{1}{4}$ of the SE $\frac{1}{4}$ and part of the NE $\frac{1}{4}$ of the NE $\frac{1}{4}$ of the SW $\frac{1}{4}$ of Section 18 of Township 19 north, Range 9 east; at the boundary of the cities of Champaign and Urbana, Illinois, on the campus of the University of Illinois. The site has approximate dimensions of 550 feet east to west and 400 feet north to south. The southern boundary is taken as the centerline of the sidewalk along Gregory Drive located about 25 feet south of the southern wall of the building; the eastern boundary is taken as the centerline of the sidewalk located about 80 feet east of the eastern wall of the building; the northern boundary is taken as the centerline of the sidewalk located about 80 feet north of the northern wall of the building; the western boundary is taken as the western limit of the parking lot that begins at the western wall of the bookstack wing and reaches about 125 feet westward, stopping at the centerline of the sidewalk of Sixth Street.

Justification: These boundaries include green space on the campus of the University of Illinois that is immediately adjacent to the library. Due to the position of sidewalks and landscaping, these areas to north, east, and south are clearly associated with the library, rather than being perceived as part of another building site or an open quadrangle. The parking lot on the west is included since it was intended, in Platt's ultimate plan for the building, that the library would receive additions and expand onto this land (Refer to site plan).

Attachments

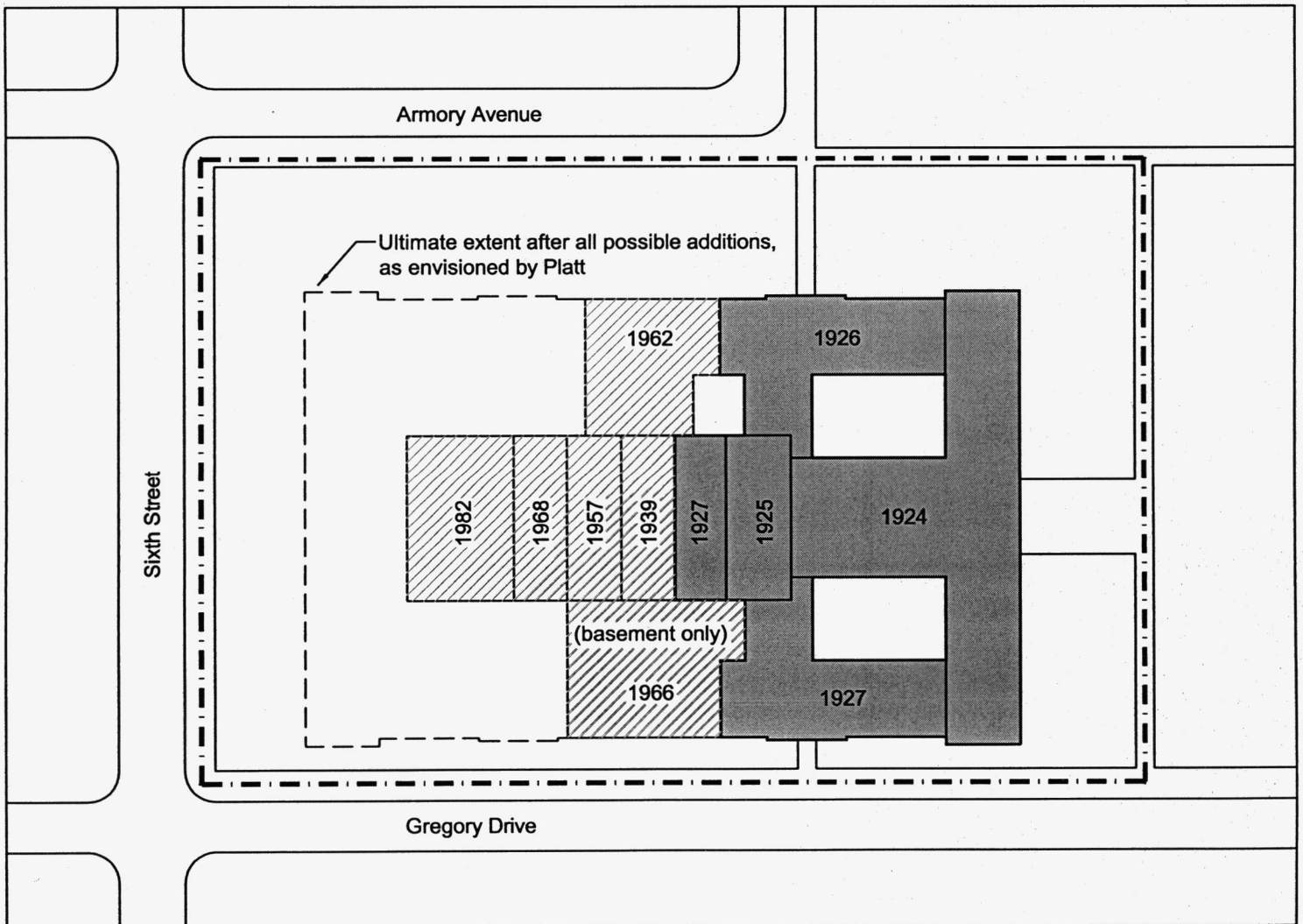
Floor plans and building sections are taken from the dedication booklet of 1929. Historic photographs and sketches are from several issues of *The Architect* magazine (refer to bibliography). Negatives of modern photographs are on file with the Preservation and Conservation Association of Champaign, Illinois.

United States Department of the Interior
National Park Service

National Register of Historic Places Continuation Sheet

Section number 11 Page 16

LIBRARY, UNIVERSITY OF ILLINOIS AT URBANA-CHAMPAIGN



Site plan of the Library showing additions, 1999.

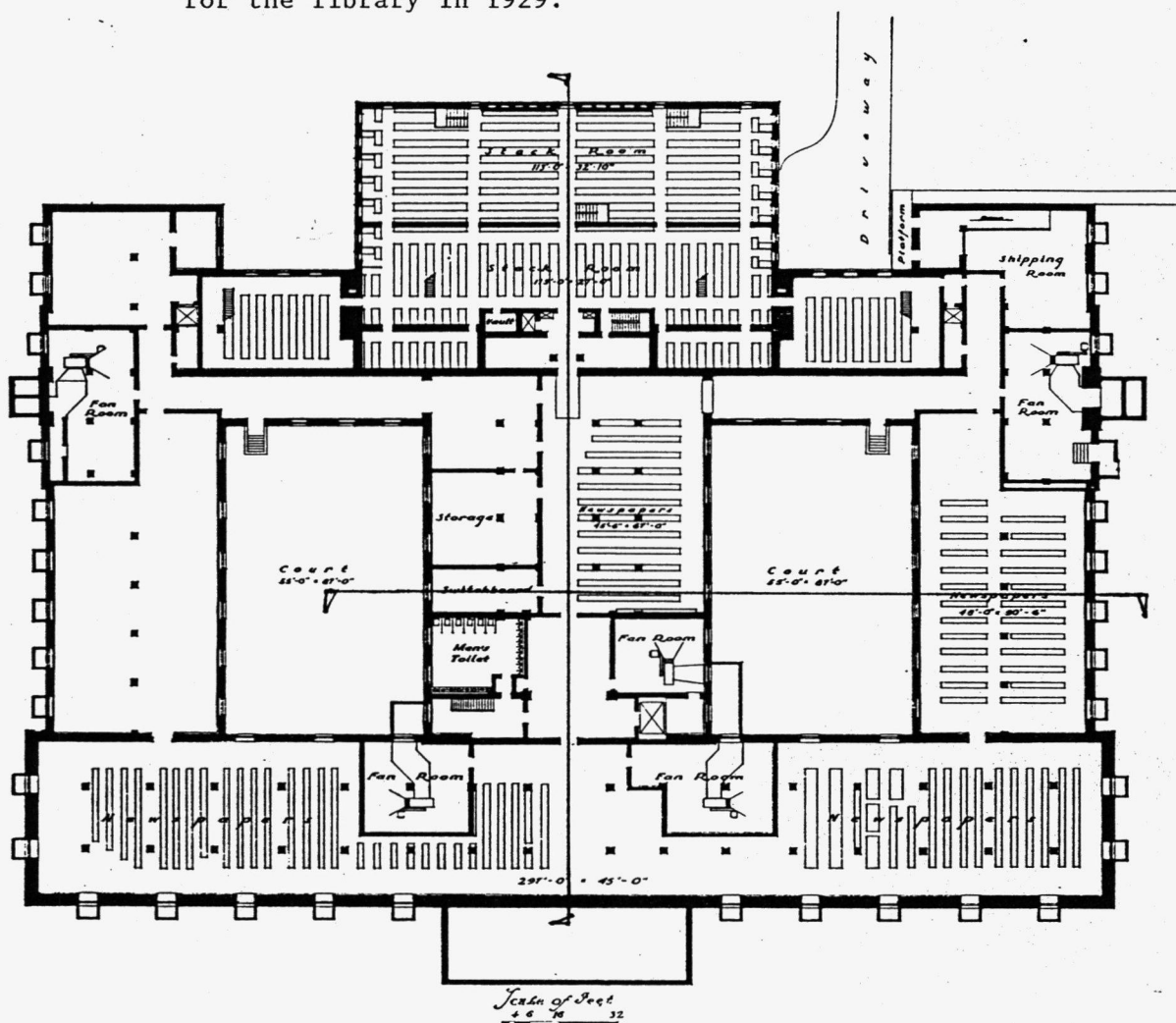
United States Department of the Interior
National Park Service

National Register of Historic Places
Continuation Sheet

Section number 11 Page 17

LIBRARY, UNIVERSITY OF ILLINOIS AT URBANA-CHAMPAIGN

Floor plans and sections are those published in the dedication booklet for the library in 1929.



Basement Floor Plan

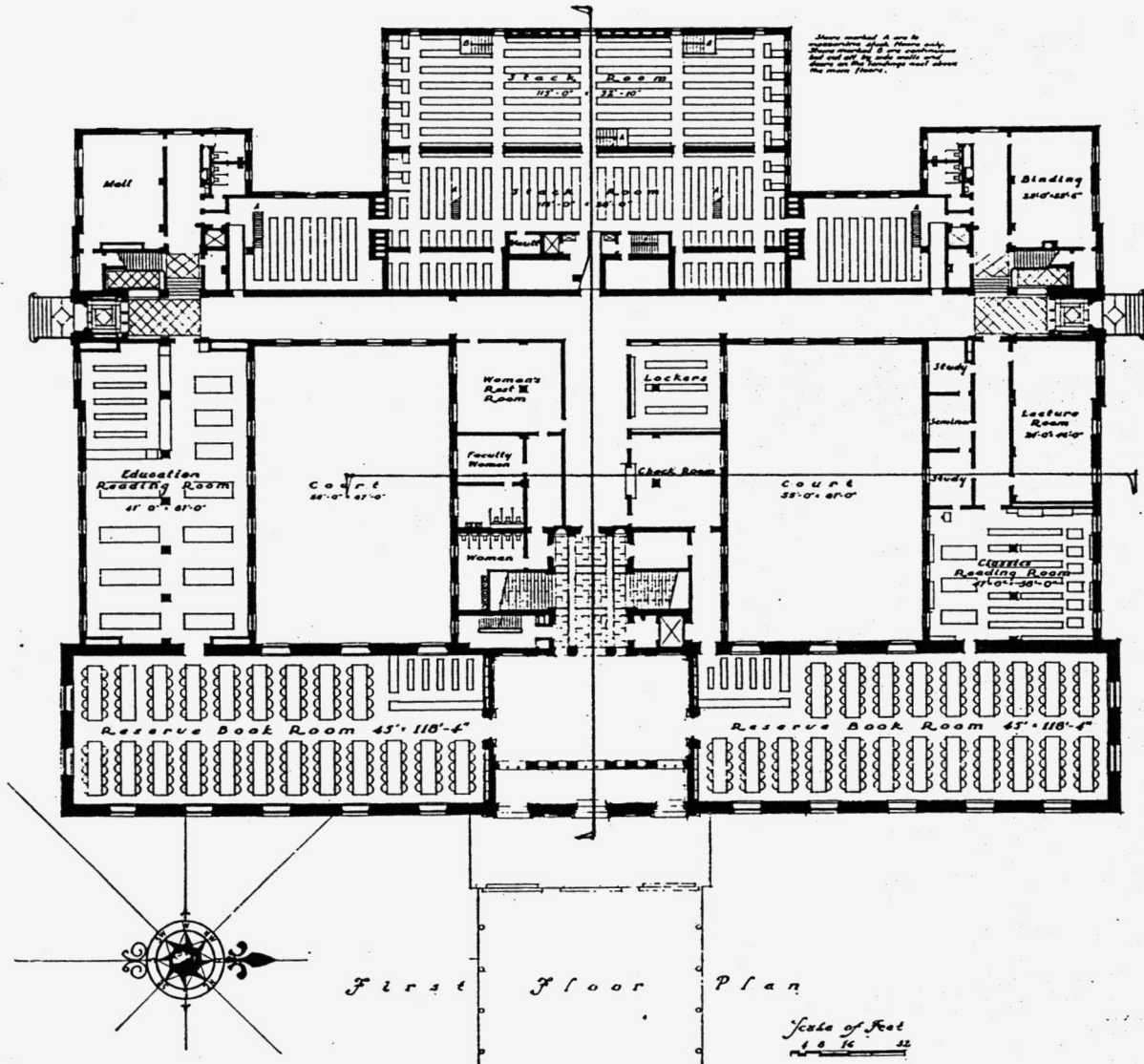
LIBRARY of the UNIVERSITY of ILLINOIS
Charles A Platt & James M White
ARCHITECTS

United States Department of the Interior
National Park Service

National Register of Historic Places
Continuation Sheet

Section number 11 Page 18

LIBRARY, UNIVERSITY OF ILLINOIS AT URBANA-CHAMPAIGN



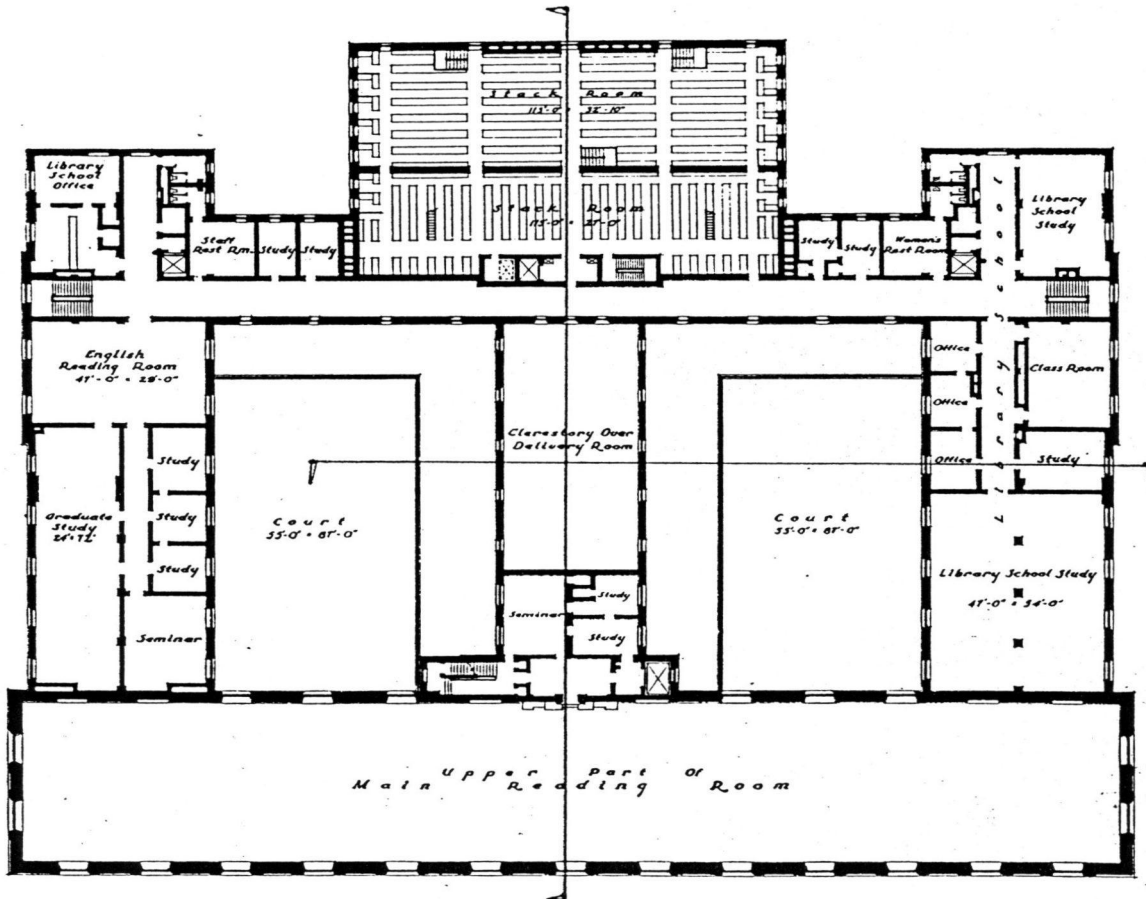
LIBRARY of the UNIVERSITY of ILLINOIS
Charles A Platt & James M White
ARCHITECTS

United States Department of the Interior
National Park Service

National Register of Historic Places
Continuation Sheet

Section number 11 Page 20

LIBRARY, UNIVERSITY OF ILLINOIS AT URBANA-CHAMPAIGN



Scale of Feet
1/8" = 1'-0"

Third Floor Plan

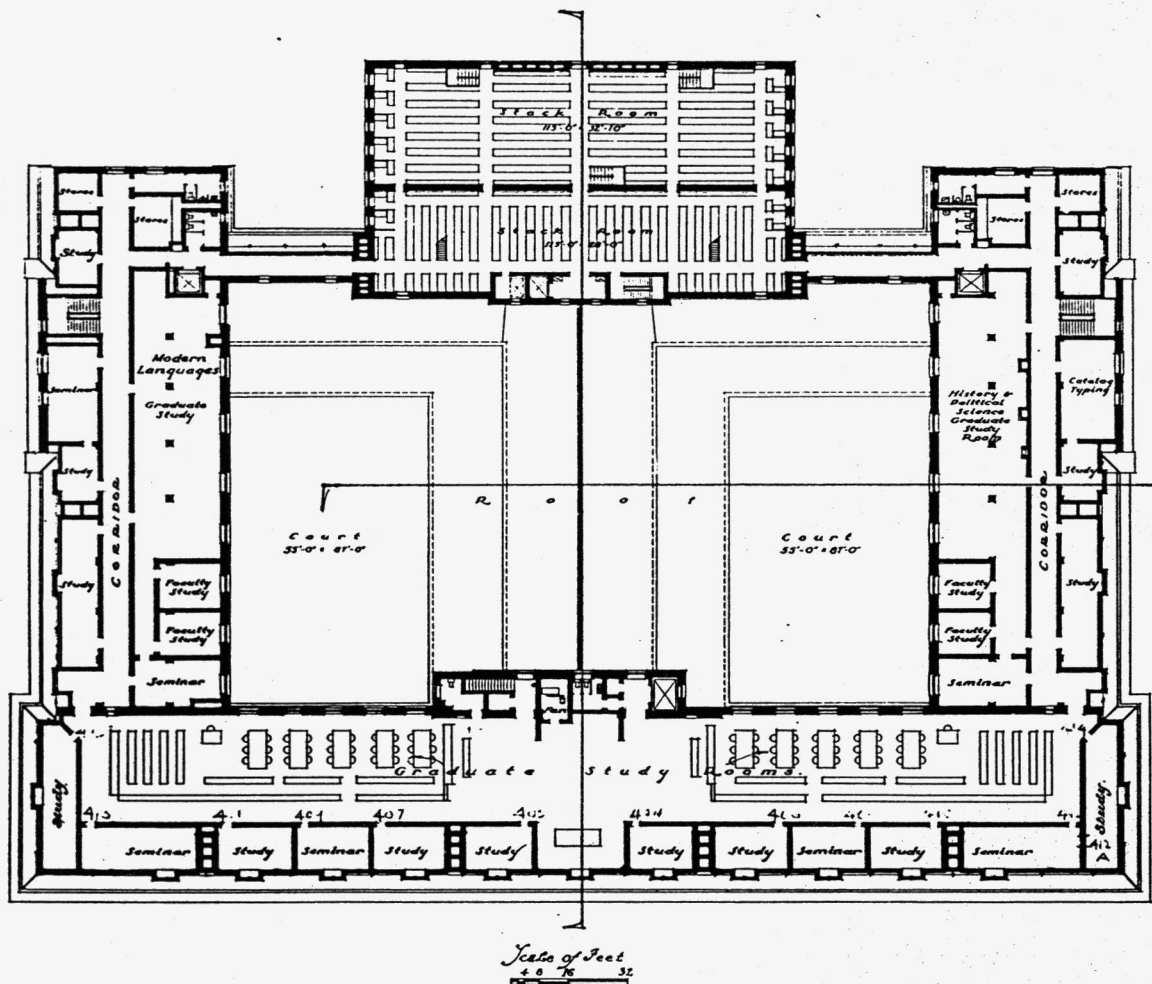
LIBRARY of the UNIVERSITY of ILLINOIS
Charles A. Platt & James M White
ARCHITECTS

United States Department of the Interior
National Park Service

National Register of Historic Places Continuation Sheet

Section number 11 Page 21

LIBRARY, UNIVERSITY OF ILLINOIS AT URBANA-CHAMPAIGN



Fourth Floor Plan

LIBRARY of the UNIVERSITY of ILLINOIS
Charles A. Platt & James M. White
ARCHITECTS

United States Department of the Interior
National Park Service

National Register of Historic Places
Continuation Sheet

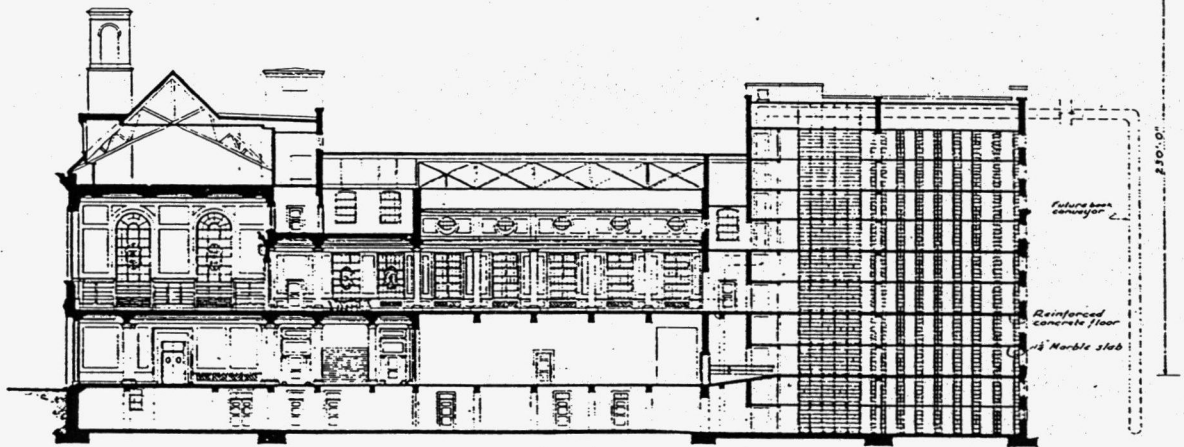
Section number 11 Page 22

LIBRARY, UNIVERSITY OF ILLINOIS AT URBANA-CHAMPAIGN



Section "A-A"

Scale of Feet
4 0 16 32



Section "D-D"

Scale of Feet
4 0 16 32

Sections of Plot P1

LIBRARY of the UNIVERSITY of
Charles A. Platt & James M
ARCHITECTS

United States Department of the Interior
National Park Service

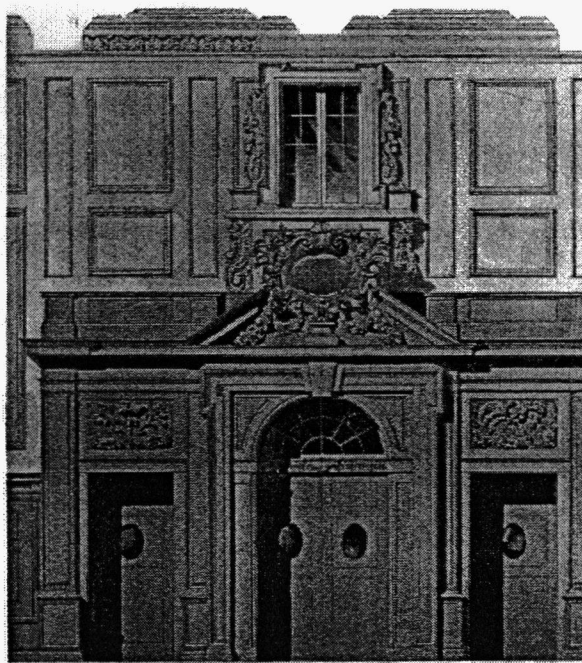
National Register of Historic Places Continuation Sheet

Section number 11 Page 23

LIBRARY, UNIVERSITY OF ILLINOIS AT URBANA-CHAMPAIGN



Final study for the library, 1924.



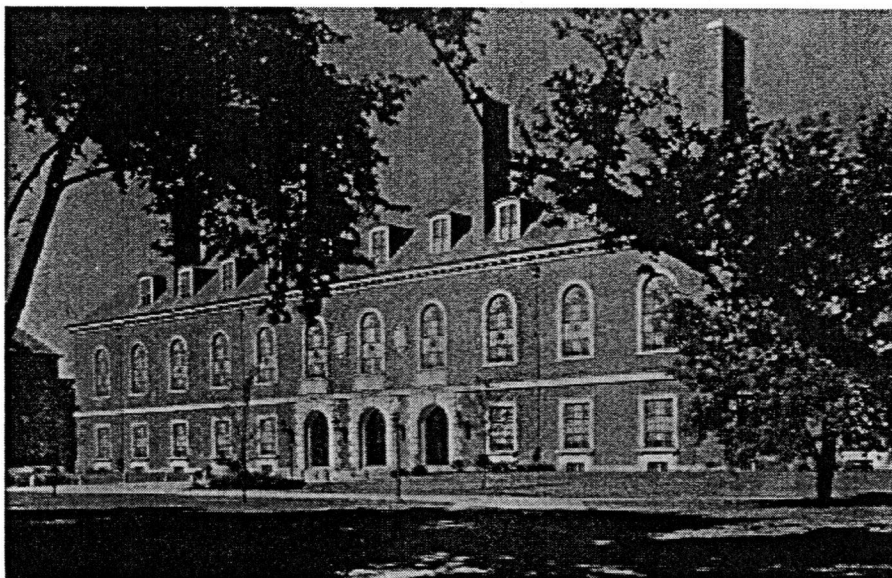
Reading Room entrance study, 1924.

United States Department of the Interior
National Park Service

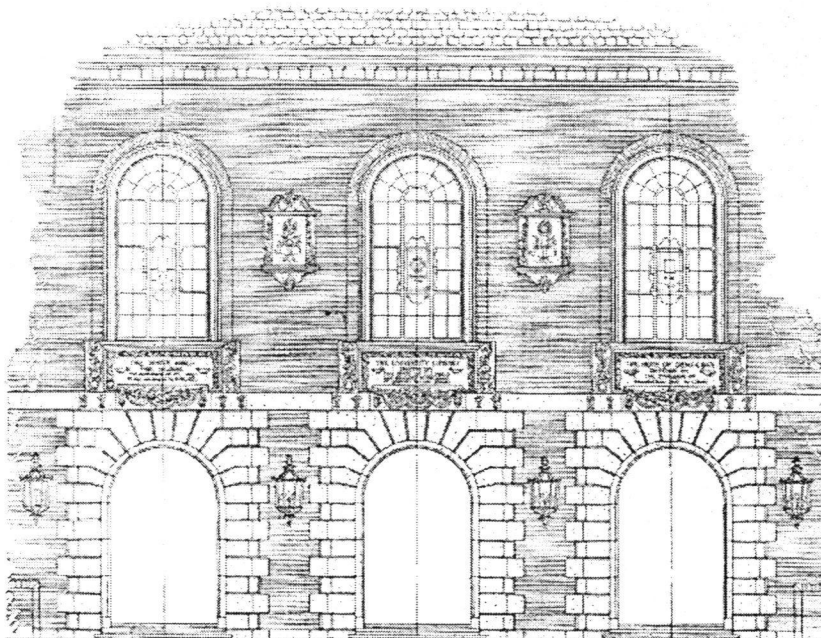
National Register of Historic Places Continuation Sheet

Section number 11 Page 24

LIBRARY, UNIVERSITY OF ILLINOIS AT URBANA-CHAMPAIGN



East side of the library, 1927.



Detail of the main entrance, 1929.

UNITED STATES DEPARTMENT OF THE INTERIOR
NATIONAL PARK SERVICE

NATIONAL REGISTER OF HISTORIC PLACES
EVALUATION/RETURN SHEET

REQUESTED ACTION: NOMINATION

PROPERTY NAME: Library--University of Illinois at Urbana-Champaign

MULTIPLE NAME: University of Illinois Buildings designed by Charles A. Platt MPS

STATE & COUNTY: ILLINOIS, Champaign

DATE RECEIVED: 3/27/00 DATE OF PENDING LIST: 4/07/00
DATE OF 16TH DAY: 4/23/00 DATE OF 45TH DAY: 5/11/00
DATE OF WEEKLY LIST:

REFERENCE NUMBER: 00000413

REASONS FOR REVIEW:

APPEAL: N DATA PROBLEM: N LANDSCAPE: N LESS THAN 50 YEARS: N
OTHER: N PDIL: N PERIOD: N PROGRAM UNAPPROVED: N
REQUEST: Y SAMPLE: N SLR DRAFT: N NATIONAL: N

COMMENT WAIVER: N

ACCEPT RETURN REJECT DATE

ABSTRACT/SUMMARY COMMENTS:

The library meets National Register criteria C, but the nomination photographs must be printed on black and white paper (see attached explanation).

RECOM./CRITERIA Return

REVIEWER Island

DISCIPLINE Historian

TELEPHONE _____

DATE 5/11/00

DOCUMENTATION see attached comments (Y/N) see attached SLR Y/N

Library--University of Illinois at Urbana-Champaign
University of Illinois Buildings Designed by Charles A. Platt MPS
Champaign Co., IL

National Register Comments:

The nomination for Charles Platt's Library at The University of Illinois, Urbana-Champaign, is very well-documented and the library meets National Register Criterion C. However, because they were processed on color paper, the photographs do not meet the National Register standard and we cannot accept the nomination until they are replaced with photographs printed on black and white paper.

Although photographic technology has evolved since the Register published its guidance on photographs, the Register continues to require stability and longevity for the core documentation for listed properties. When black and white negatives are processed on color paper, the resulting prints are essentially color photographs in the sense that they have limited long-term stability. Because the long-term stability of color papers is uncertain, the Register continues to require photographs to be processed on black and white paper using black and white film processing. Fiber-based paper is preferred, but resin-coated (RC) papers also are acceptable (see National Register Bulletin 16, pp. 63--64).

Once the photographs for this library have been reprinted, the National Register will be happy to expedite review of this nomination.

The photographs accompanying the cover form also were printed on color paper, but--as you know--the National Register does not require photographs as part of the cover documentation for Multiple Property Submissions. Photographs generally are submitted with nominations for individual properties. Because the cover photographs are not part of the necessary basic documentation, we are not returning the cover form for replacements. When nominations for the other individual buildings depicted are ready to be submitted, the photographs must be printed on black and white paper.

Please let me know if you have any questions.

Beth Boland
202-343-9545

UNITED STATES DEPARTMENT OF THE INTERIOR
NATIONAL PARK SERVICE

NATIONAL REGISTER OF HISTORIC PLACES
EVALUATION/RETURN SHEET

REQUESTED ACTION: RESUBMISSION

PROPERTY NAME: Library--University of Illinois at Urbana-Champaign

MULTIPLE NAME: University of Illinois Buildings designed by Charles A. Platt
t MPS

STATE & COUNTY: ILLINOIS, Champaign

DATE RECEIVED: 7/07/00 DATE OF PENDING LIST:
DATE OF 16TH DAY: DATE OF 45TH DAY: 8/21/00
DATE OF WEEKLY LIST:

REFERENCE NUMBER: 00000413

DETAILED EVALUATION:

___ACCEPT ___RETURN ___REJECT _____DATE

ABSTRACT/SUMMARY COMMENTS:

Replacement photos printed on black & white paper have been provided, as requested by the National Register.

RECOM./CRITERIA Accept - c

REVIEWER Boland

DISCIPLINE Historic

TELEPHONE _____

DATE 8/11/06

DOCUMENTATION see attached comments Y/N see attached SLR Y/N



University of Illinois Library
Urbana, Champaign Co., IL

Itle: Nov 1999

negs @ PACA (217.359.7222)

facing NW; Gregory st. facade on left
East facade

#1/g



University of Illinois Library
Urbana, Champaign Co., IL

He: Nov 1949

negs @ PACA (217. 359. 7222)

facing west; east entrances

#2/B



University of Illinois Library
Urbana, Champaign Co., IL

File: Nov 1999

negs @ PACA (217.359.7222)

Facing north; stacks

3/8



University of Illinois Library
Urbana, Champaign Co., IL

He: Nov 1999

negs @ PACA (217.359.7222)

facing south; north entrance

4/8



University of Illinois Library
Urbana, Champaign Co., IL

He: Nov 1999

negs @ PACA (217.359.7022)

Facing SE; stack addition:

#5/8



University of Illinois Library
Urbana, Champaign Co., IL

11e: Nov 1999

negs. @ PACA (217.359.7222)

facing SW; east entrance/lobby

6/3



University of Illinois Library
Urbana, Champaign Co., IL

Hle: Nov 1991

negs @ PACTA (217. 359. 7222)

facing NW; staircase + 2nd floor

7/B



University of Illinois Library
Urbana, Champaign Co, IL

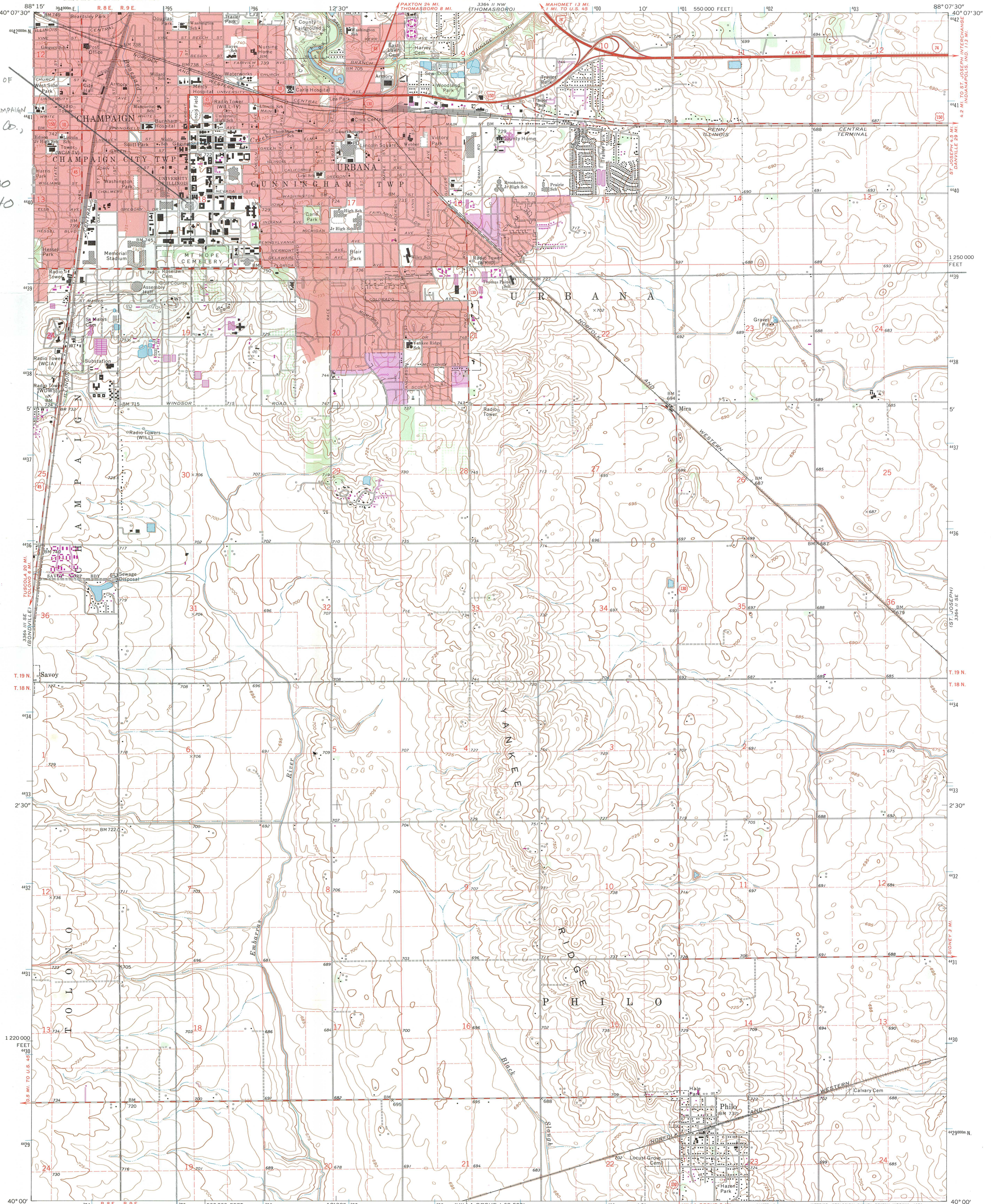
Title: Nov 1949

reqs @ PAOA (217.359.7222)

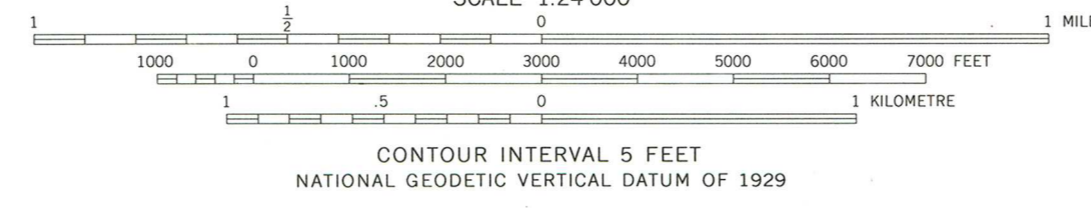
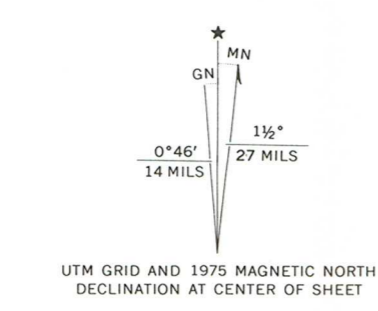
facing south; reading room

#8/8

LIBRARY,
UNIVERSITY OF
ILLINOIS AT
URBANA—CHAMPAIGN
Champaign Co.,
IL
Zone 16
E 395 280
N 4439 940



Mapped, edited, and published by the Geological Survey
Control by USGS and USC&GS
Planimetry by photogrammetric methods from aerial photographs taken 1955. Topography by planetable surveys 1949-50 and 1957. Revised from aerial photographs taken 1969. Field checked 1970
Polyconic projection. 1927 North American datum. 10,000-foot grid based on Illinois coordinate system, east zone 1000-metre Universal Transverse Mercator grid ticks, zone 16, shown in blue
Red tint indicates area in which only landmark buildings are shown
Fine red dashed lines indicate selected fence and field lines where generally visible on aerial photographs. This information is unchecked
Revisions shown in purple compiled from aerial photographs taken 1975. This information not field checked
Purple tint indicates extension of urban areas



ROAD CLASSIFICATION

| | |
|--|--|
| Primary highway, all weather, hard surface | Light-duty road, all weather, improved surface |
| Secondary highway, all weather, hard surface | Unimproved road, fair or dry weather |

Interstate Route U. S. Route State Route



THIS MAP COMPLIES WITH NATIONAL MAP ACCURACY STANDARDS FOR SALE BY U. S. GEOLOGICAL SURVEY, RESTON, VIRGINIA 22092 AND BY THE STATE GEOLOGICAL SURVEY, URBANA, ILLINOIS 61801
A FOLDER DESCRIBING TOPOGRAPHIC MAPS AND SYMBOLS IS AVAILABLE ON REQUEST

URBANA, ILL.
SW/4 URBANA 15' QUADRANGLE
N4000—W8807.5/7.5
1970
PHOTOREVISED 1975
AMS 3364 II SW—SERIES V863





**Illinois Historic
Preservation Agency**

1 Old State Capitol Plaza • Springfield, Illinois 62701-1507 • (217) 782-4836 • TTY (217) 524-7128

June 30, 2000

Ms. Beth Boland
National Register Program
National Park Service
1849 C Street, N.W.
Washington, D.C. 20240

Dear Beth:

Enclosed please find the National Register nomination materials and a new set of black and white photographs for the Library, University of Illinois at Urbana-Champaign, in Illinois. The photos are in response to your return sheet dated 5/11/00.

Thank you for your attention to this matter.

Sincerely yours,

Ann V. Swallow
Survey & National Register
Coordinator

encl.