

152

United States Department of the Interior
National Park Service

NATIONAL REGISTER OF HISTORIC PLACES
REGISTRATION FORM

1. Name of Property

Historic Name: Star City Commercial Historic District

Other Name/Site Number: LI0064

2. Location

Street & Number: Jefferson and Bradley Streets

Not for Publication: N/A

City/Town: Star City Vicinity: N/A

State: AR County: Lincoln Code: 079 Zip Code: 71667

3. Classification

Ownership of Property: Private & Public-Local

Category of Property: District

Number of Resources within Property:

Contributing	Noncontributing	
<u>11</u>	<u>2</u>	Buildings
<u> </u>	<u> </u>	Sites
<u> </u>	<u> </u>	Structures
<u> </u>	<u> </u>	Objects
<u>11</u>	<u>2</u>	Total

Number of contributing resources previously listed in the National Register: 1

Name of related multiple property listing: N/A

Star City Commercial Historic District Lincoln County, Arkansas
Name of Property County and State

4. State/Federal Agency Certification

As the designated authority under the National Historic Preservation Act of 1986, as amended, I hereby certify that this X nomination _____ request for determination of eligibility meets the documentation standards for registering properties in the National Register of Historic Places and meets the procedural and professional requirements set forth in 36 CFR Part 60. In my opinion, the property X meets _____ does not meet the National Register Criteria.

Cathryn A. Slater 1-5-99
Signature of certifying official Date

Arkansas Historic Preservation Program
State or Federal agency and bureau

In my opinion, the property _____ meets _____ does not meet the National Register criteria.

Signature of commenting or other official Date

State or Federal agency and bureau

5. National Park Service Certification

I, hereby certify that this property is:

- entered in the National Register B. R. Jones 2/26/99
- _____ determined eligible for the National Register _____
- _____ determined not eligible for the National Register _____
- _____ removed from the National Register _____
- _____ other (explain): _____

Signature of Keeper Date
Of action

Jefferson Streets. The 1923 Nichols Hardware Building at 202 Bradley (LI0066) now vacant, could be considered one of the most intact of the district as it retains its original display windows and recessed entry with wooden french door. The only alteration is the application of plywood on a ribbon of transoms above the entry. The brick parapet is simple with two crenellations embellished with inset concrete diamond details.

The Adams Smith Building at 204-206 Bradley (LI0067) was built in 1922 and is a simple structure with four crenellations at the parapet. Buck's Hardware operates from the building now. A metal awning covers two recessed entries with large display windows which are original to the building. Above the window a neon sign remains from its days as the G.D. Smith Mercantile.

The building at 208 Bradley (LI0068) is the Peacock Inn. The 1928 inn, now a flower shop, is a two-story brick structure with recessed entry door and display windows. The transoms have been covered with plywood but the upper story is lit by two one-over-one double-hung windows within an original parapet with a simple soldier course.

The buildings along the west side of the square include the Norton Mercantile Building at 102 Jefferson (LI0074), an unadorned stucco building constructed in 1927. A dress store now occupies the former mercantile but its recessed entry remains. The ribbon of transoms above the display windows has been boarded over.

The building at 104 Jefferson, or the W.D. Davis Grocery Store (LI0075), was built at the same time as 102 Jefferson and is sheathed in plain stucco as well. The building, now a restaurant, does retain its transom windows above the original recessed entry.

The W.A. Trussell Dry Goods Store at 106 Jefferson (LI0076) displays a wood and glass entry door between two large plate glass windows. The display windows and door are flush with the sidewalk which is probably an alteration from its original 1927 appearance. Transom windows above the entry have been covered with plywood. A brick pediment contains rows of soldier bricks as decoration.

The Vick Building (LI0065) at 200 Bradley Street is the most impressive building in the district despite the changes to the first-story. The two-story brick structure - built in 1923 - was probably the first new building erected after a 1922 fire which destroyed all but two buildings on the south side of the square. The building, which currently contains an antique store, has a concrete parapet above two ribbons of four stationary windows with geometric muntins beneath transoms containing similar muntins. Concrete and brick detailing adorn the front facade around the second-story windows and beneath the parapet. The first-story display windows, above new brick bulkheads, have been replaced with metal and glass plate windows, and door, bringing the entry flush to the sidewalk.

The building at 210 Bradley (LI0069) has recently been renovated for use as a law office but it was built in 1928 for the Crow Drug Store. The ribbon of fixed windows above the entry are intact but the display windows and doors on this building have been replaced with modern metal and glass. The parapet above is plain with a row of soldier bricks above the entry.

Star City Commercial Historic District Lincoln County, Arkansas
Name of Property County and State

new clock tower, the memorial was moved back to its location on the town square.

The Star City Commercial Historic District is composed of modest brick and stucco 20th century commercial buildings spanning the dates 1916 to 1928. The structures represent the historic business sector surrounding the town square of Star City. Out of thirteen buildings, eleven are considered contributing. The two non-contributing buildings are historic structures that have undergone changes to their historic integrity that are considered too extensive to be listed as contributing. Those buildings that compose the district are representative of the evolution of the town and of the presentation of merchandising in America in the 20th century. The buildings that retain their original recessed entries with large display windows are indicative of the movement that began at the end of the nineteenth century to meet merchandising demands for larger display space, and technological advances in glassmaking which made it possible for large plate-glass panels to be used. The Star City Commercial Historic District is being nominated to the National Register under Criterion C with local significance for its retention of early 20th century architecture that demonstrates the early character of the town and innovations in small retail business storefronts before the advent of strip shopping malls. The Star City Confederate Memorial, a contributing object to the district was listed on the National Register in 1996 under Criterion A, Criteria Consideration F, and is associated with the historic context "Something So Dim It Must Be Holy": Civil War Commemorative Sculpture in Arkansas, 1886-1934.

9. Major Bibliographical References

Lincoln County Historical Committee. History of Lincoln County Arkansas 1871-1983. Dallas, Texas: Taylor Publishing Company, 1983.

Information submitted by Pat Crow, Star City. 1997.

Arkansas Democrat Gazette 31, December, 1961.

Jackson, Mike. "Storefronts on Main Street: An Architectural History." Illinois Preservation Series. Number 19.

Previous documentation on file (NPS):

- _ preliminary determination of individual listing (36 CFR 67) has been requested.
- _ previously listed in the National Register
- _ previously determined eligible by the National Register
- _ designated a National Historic Landmark
- _ recorded by Historic American Buildings Survey #
- _ recorded by Historic American Engineering Record #

Primary Location of Additional Data: _____

State historic preservation office

- Other state agency
- Federal agency
- Local government
- University
- Other -- Specify Repository: _____

10. Geographical Data

Acreage of Property: Approximately 2.5 acres.

UTM References: Zone Easting Northing Zone Easting Northing

A	<u>15</u>	<u>606660</u>	<u>3756200</u>	B	<u>15</u>	<u>606600</u>	<u>3756200</u>
C	<u>15</u>	<u>606600</u>	<u>3756140</u>	D	<u>15</u>	<u>606640</u>	<u>3756100</u>
E	<u>15</u>	<u>606640</u>	<u>3756080</u>	F	<u>15</u>	<u>606740</u>	<u>3756080</u>
G	<u>15</u>	<u>606740</u>	<u>3756180</u>	H	<u>15</u>	<u>606660</u>	<u>3756200</u>

Verbal Boundary Description:

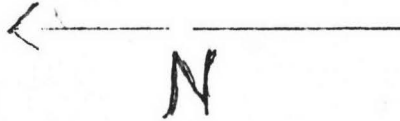
Beginning at a point on the southwest corner of Bradley Street and Drew Street (A), proceed south to the rear property lines of 200-220 Bradley Street (B), proceed west 660' along the rear property lines of 200-220 Bradley Street to the curbline at the southeast corner of Bradley and Jefferson Street (C). Then proceed northwest 150' across the intersection to the northwest corner of Bradley and Jefferson Street (D), turning west 70' to the rear property line of 108-102 Jefferson (E). Proceed north for 285' to the southwest corner of Jefferson and Arkansas Streets (F). Proceed east for 100' across the parking lot to the lawn of the town square (G), turn south for 300' to south curbline of Bradley Street (H). Then proceed east to the point of beginning (A). See attached map.

Boundary Justification:

This nomination includes all of the property historically associated with the commercial properties comprising the Star City Commercial Historic District and includes that portion of the town square containing the Civil War commemorative statue, which was an important part of the historic setting of the commercial streetscape.

DREW

TOWN
SQUARE



- 1. 200 Bradley - LI0065 - C
- 2. 202 Bradley - LI0066 - C
- 3. 204-206 Bradley - LI0067 - C
- 4. 208 Bradley - LI0068 - C
- 5. 210 Bradley - LI0069 - C
- 6. 212-214 Bradley - LI0070 - NC
- 7. 216 Bradley - LI0071 - C
- 8. 218 Bradley - LI0072 - C
- 9. 220 Bradley - LI0073 - C
- 10. 108 Jefferson - LI0077 - NC
- 11. 106 Jefferson - LI0076 - C
- 12. 104 Jefferson - LI0075 - C
- 13. 102 Jefferson - LI0074 - C
- 14. Confederate Memorial - LI0044 - C

CONFEDERATE
MONUMENT

14

PARKING
LOT

JEFFERSON

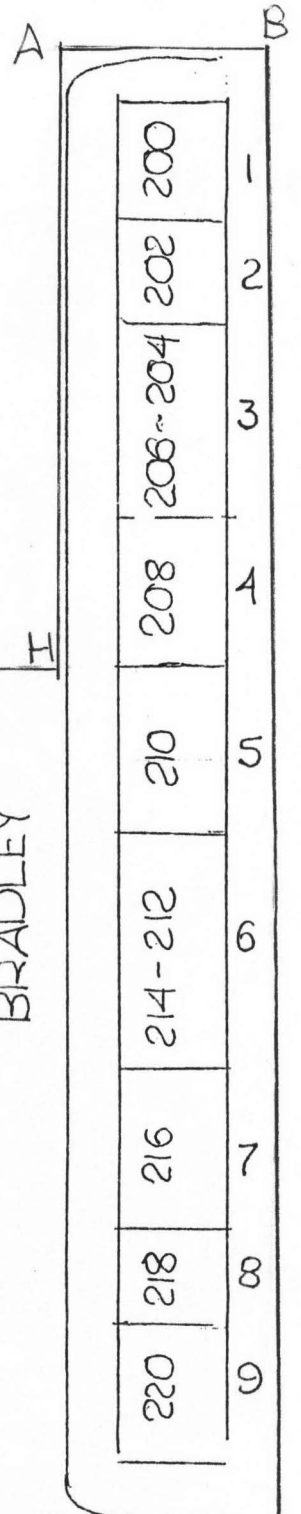
102	104	106	108	VACANT LOT
-----	-----	-----	-----	---------------

13

12

11

10



BRADLEY

F

D

E

C

A

B

H

G

Star City Commercial Historic District Lincoln County, Arkansas
Name of Property County and State

11. Form Prepared By

Name/Title: Holly Hope/Survey Historian

Organization: Arkansas Historic Preservation Program Date: 11/05/98

Street & Number: 1500 Tower Bldg., 323 Center St. Telephone: (501) 324-9880

City or Town: Little Rock State: AR ZIP: 72201

UNITED STATES DEPARTMENT OF THE INTERIOR
NATIONAL PARK SERVICE

NATIONAL REGISTER OF HISTORIC PLACES
EVALUATION/RETURN SHEET

REQUESTED ACTION: NOMINATION

PROPERTY NAME: Star City Commercial Historic District

MULTIPLE NAME: ~~Civil War Commemorative Sculpture MPS~~

STATE & COUNTY: ARKANSAS, Lincoln

DATE RECEIVED: 1/14/99 DATE OF PENDING LIST: 1/26/99
DATE OF 16TH DAY: 2/11/99 DATE OF 45TH DAY: 2/28/99
DATE OF WEEKLY LIST:

REFERENCE NUMBER: 99000152

REASONS FOR REVIEW:

APPEAL: N DATA PROBLEM: N LANDSCAPE: N LESS THAN 50 YEARS: N
OTHER: N PDIL: N PERIOD: N PROGRAM UNAPPROVED: N
REQUEST: N SAMPLE: N SLR DRAFT: Y NATIONAL: N

COMMENT WAIVER: N

 ACCEPT RETURN REJECT DATE

ABSTRACT/SUMMARY COMMENTS:

The Star City Historic District is significant under National Register Criteria A and C in the areas of Commerce, Architecture and Social History. The district illustrates the simple austere commercial buildings erected in rural Arkansas during the early decades of the twentieth century. Devastating fires destroyed much of the earlier commercial downtown of Star City; the subsequent local rebuilding efforts reflected in this historic district provide an interesting snapshot of vernacular small town construction during a particular period and represent the historic core of Star City's commercial streetscape. The district includes the previously listed Star City Confederate Memorial, which is individually eligible under Criterion A (Social History) and contributes to the overall character and significance of the commercial district.

RECOM./CRITERIA Accept A+C

REVIEWER Paul Lusignea

DISCIPLINE HISTORIAN

TELEPHONE _____

DATE 2/26/99

DOCUMENTATION see attached comments Y/N see attached SLR (Y)N

United States Department of the Interior
National Park Service

National Register of Historic Places
Continuation Sheet

Section number _____ Page _____

SUPPLEMENTARY LISTING RECORD

NRIS Reference Number: 99000152

Date Listed: 2/26/99

Star City Commercial Historic District
Property Name

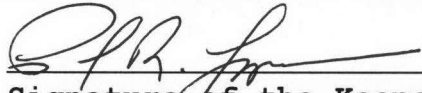
Lincoln
County

AR
State

N/A

Multiple Name

This property is listed in the National Register of Historic Places in accordance with the attached nomination documentation subject to the following exceptions, exclusions, or amendments, notwithstanding the National Park Service certification included in the nomination documentation.


Signature of the Keeper

2/26/99
Date of Action

=====

Amended Items in Nomination:

Significance:

The district is justified under the Area of Significance -- *Commerce* under Criterion A. This reflects the district's importance as the best remaining illustration of commercial development during early twentieth century history of Star City. [This is not clearly stated in the narrative text.]

The *Significant Dates* are revised to read 1922 and 1926, to reflect the devastating fire and the subsequent start of substantial rebuilding in the commercial district and the date of erection of the individually eligible Civil War monument.

This information was confirmed with H. Hope of the Arkansas SHPO.

DISTRIBUTION:

- National Register property file
- Nominating Authority (without nomination attachment)



VICK

Star City Commercial Historic District

Star City, Lincoln Co

Zoo Bradley

A. Bennett

9/20/98

Negative on file at AHPP

view of 2nd story windows



DELTA MEMORIAL
HOME HEALTH
Serving All Areas • 24 Hours • 7 Days
428-5569

DELTA MEMORIAL HOSPITAL
CLINIC
DR. ANY ONGLAO, PEDIATRICIAN
488-2849 or 385-1390

Star City Commercial Historic District

108 Jefferson

Star City, Lincoln Co

A. Bennett

9/20/98

on file AHPP

View from east



Star City Commercial Historic District

Star City, Lincoln Co

A. Bennett

9/20/98

on file AHPP

view from south



ANTIQUES

CLOSED

PAST PRESENT

WINDY CITY

UPST

Stark City Commercial Historic District

Stark City, Lincoln Co

A. Bennett

9/20/98

ON file AHPP

View from east, Bradley St

WYNN
INSURANCE AGENCY

Allstate

WYNN
INSURANCE AGENCY
610-6211 TED W. BRADLEY



Star City Historic District

18220 Bradley

Star City, Lincoln Co

Photo by A. Bennett

9/20/98

Negative of file at AHPP

View from North



Coca-Cola

GRILL

LINCOLN

SINCE
1876

LEDGER

541 BEZ

Star City Historic District

216 Bradley

Star City, Lincoln Co

A. Bennett

9/20/98

Negative of file at AHPP

view from north

A black and white photograph of a building facade. The building is light-colored with a decorative cornice featuring a row of rectangular blocks. Below the cornice are two small, square, patterned windows. Further down are three larger openings: a doorway on the left, a window in the center, and a doorway on the right. Each opening has a sign above it. The sign above the left doorway reads 'LINCOLN', the sign above the center window reads 'SINCE 1876', and the sign above the right doorway reads 'LEDGER'. There are three stars on the facade: one to the left of the first doorway, one to the right of the second doorway, and one to the right of the third doorway. A portion of a striped awning is visible on the far right.

LINCOLN

SINCE
1876

LEDGER

Star City Historic District

216 Bradley

Star City, Lincoln Co

A. Bennett

9/20/98

Negative on file at AHPP

View of detail



ANTIQUE'S

ANTIQUE'S

PHILIP
BRADLEY

ANTIQUE'S

THINGS of The PAST PRESENT

FORD

Arkansas
065 BEZ

Ark. Rd.
Historic
Marker
No. 10

WICK

Star City Commercial Historic District

200 Bradley

Star City, Lincoln Co

A. Bennett

9/20/98

Negative of file st AHPP

view from north



STAR
BRAND

SHOES

G.D. SMITH MERCHANT CO.

Star City Commercial Historic District

204-206 Bradley

Star City, Lincoln Co

A. Bennett

9/20/98

Negative on file at AHPP

View of sign



FITNESS PLUS

106

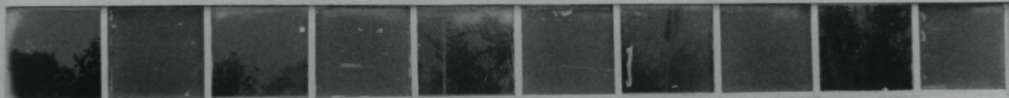
Small sign on the left side of the building.

Star City Commercial Historic District
106 Jefferson
Star City, Lincoln Co
A. Bennett
9/20/98
on the AHPP
View from east

Enjoy
Coca-Cola

Kim's Chicken

Enjoy
Coca-Cola



Star City Commercial Historic District

Star City, Lincoln Co

lot Jefferson

A. Bennett

9/20/98

on file AHPP

view from east



Coca-Cola

Linn's
Licken

LUNNEN'S
SHOP

Star City Commercial Historic District

102 Jefferson

Star City, Lincoln Co

A. Bennett

9/20/98

ON file AHPP

view from east

Pickens FLOWERS & GIFTS

Coke



Stor City Commercial Historic District

208 Bradley

Stor City, Lincoln Co

A. Bennett
9/20/98

Negative on file at AHPP

view from north

SHOES
G. D. SMITH MERC. CO

BUCKS

DAILY
MELON BALLONS
\$1.00
\$2.00

BUCKS

CREAM SHOP
\$1.00
\$2.00

KNIFE
SHARPENED



Star City Commercial Historic District

204-206 Bradley

Star City, Lincoln Co

A. Bennett

9/20/98

ON file AHAP

View from North



AST - PRESENT

CHEVROLET

BU
ON
HELIUM
SL
EVER

Star City Historic District

202 Bradley

Star City, Lincoln Co

A. Bennett

9/20/98

Negative on file at AHPP

view from north



Stark City Commercial Historic District

Stark City, Lincoln Co

A. Bennett

9/20/98

on file AHPP

view of Confederate Memorial from south



STAR CITY

ADAMS HILL

RECREATION

CIRCA
1874

AGRICULTURE

COMMERCE

INDUSTRY

WIMBERLY

HUNTER HILL

GRUMBLES HILL

WIMBERLY HILL

WILSON HILL

WILSON HILL

Stark City Commercial Historic District

Stark City, Lincoln Co

A. Bussett

9/20/98

ON file AHPP

View of mural on 218 Bradley from west



Stor City Commercial Historic District

214-212 Bradley

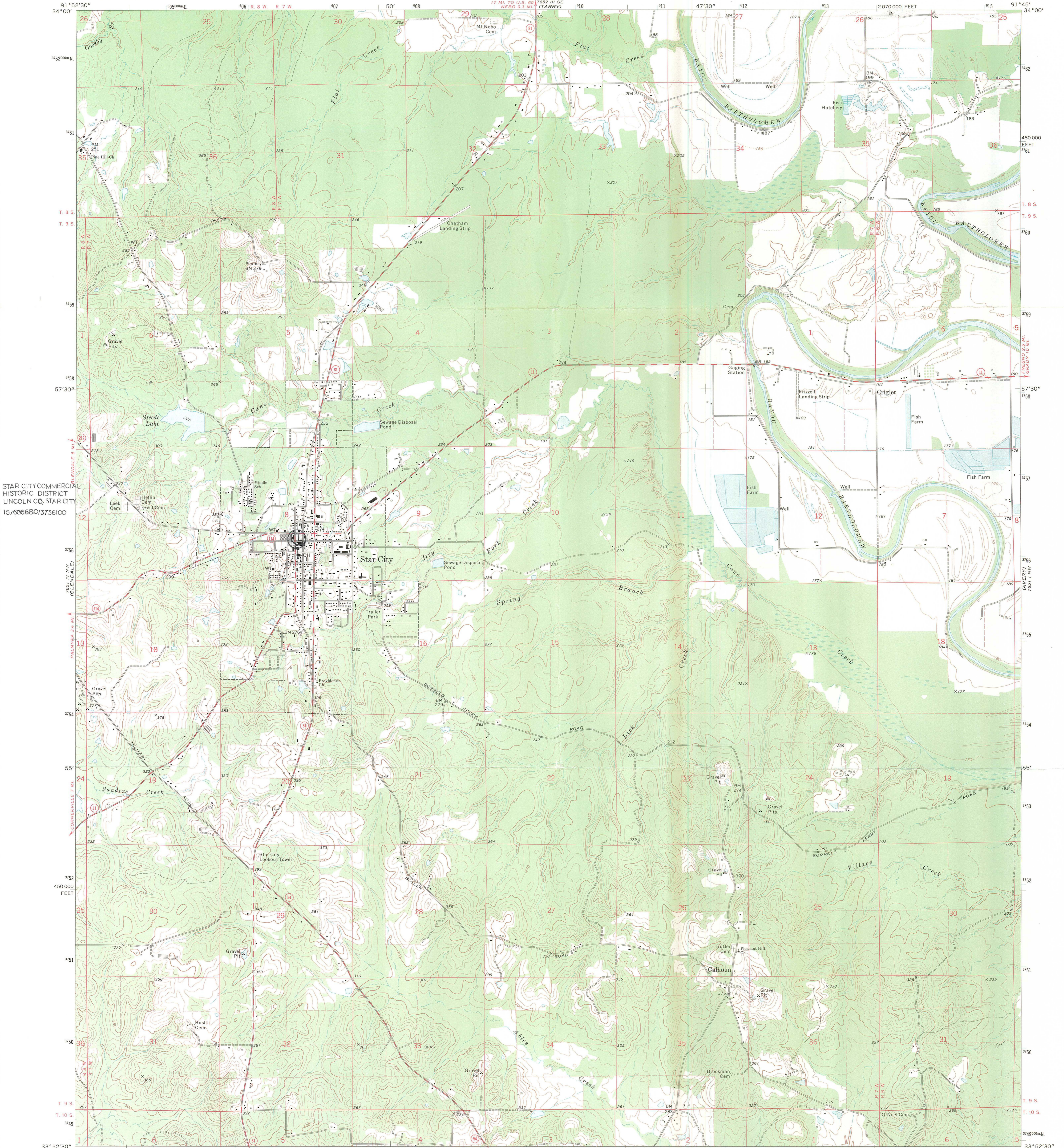
Stor City, Lincoln Co

A. Bennett

9/20/98

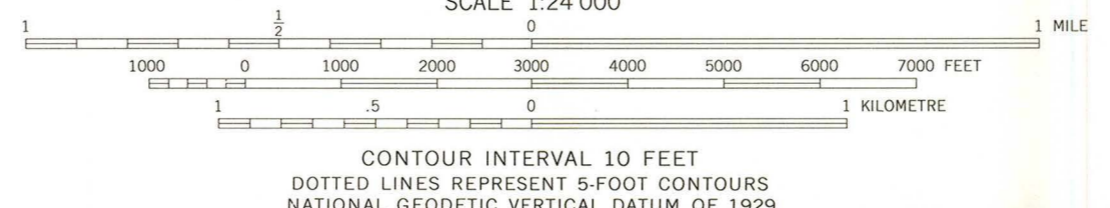
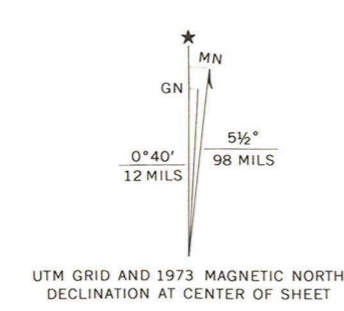
Negative of file at AHPP

view from North



STAR CITY COMMERCIAL
HISTORIC DISTRICT
LINCOLN CO., STAR CITY
15/606680/3736100

Mapped, edited, and published by the Geological Survey
Control by USGS and NOS/NOAA
Topography by photogrammetric methods from aerial
photographs taken 1972. Field checked 1973
Projection and 10,000-foot grid ticks: Arkansas coordinate
system, south zone (Lambert conformal conic)
1000-metre Universal Transverse Mercator grid ticks,
zone 15, shown in blue. 1927 North American datum
Fine red dashed lines indicate selected fence and field lines where
generally visible on aerial photographs. This information is unchecked



ROAD CLASSIFICATION

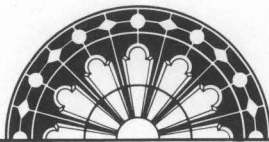
Primary highway, hard surface	Light-duty road, hard or improved surface
Secondary highway, hard surface	Unimproved road

 Interstate Route
 U. S. Route
 State Route

THIS MAP COMPLIES WITH NATIONAL MAP ACCURACY STANDARDS
FOR SALE BY U. S. GEOLOGICAL SURVEY, DENVER, COLORADO 80225, OR RESTON, VIRGINIA 22092
AND BY THE ARKANSAS GEOLOGICAL COMMISSION, LITTLE ROCK, ARKANSAS 72201
A FOLDER DESCRIBING TOPOGRAPHIC MAPS AND SYMBOLS IS AVAILABLE ON REQUEST

STAR CITY, ARK.
NE/4 STAR CITY 15' QUADRANGLE
N3352.5-W9145.7/7.5

1973
AMS 7651 IV NE—SERIES V884



ARKANSAS
HISTORIC
PRESERVATION
PROGRAM

January 6, 1999

Carol D. Shull
Chief of Registration
United State Department of the Interior
National Register of Historic Places
National Park Service
800 North Capitol Street, Suite 250
Washington, D.C. 20002

RE: Star City Commercial Historic District - Star City, Lincoln County.

Dear Carol:

We are enclosing for your review the nomination of the above referenced property. The Arkansas Historic Preservation Program has complied with all applicable nominating procedures and notification requirements in the nomination process.

Thank you for your consideration in this matter.

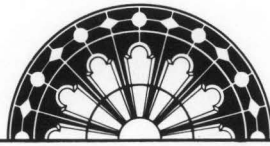
Sincerely,

Cathy Buford Slater
State Historic Preservation Officer

CBS:rm

Enclosures





ARKANSAS
HISTORIC
PRESERVATION
PROGRAM

February 16, 1999

Paul Lusignan
800 N. Capitol Street, Suite 250
Washington D.C. 20002

Dear Paul:

I am enclosing the required changes to the Star City Commercial Historic District as per your instructions of February 12, 1999. Let me know if I need to clean up anything else. You have probably learned from my original verbal boundary description that if you come to Arkansas you should not ask me for directions!

I am expecting a baby in July and was told that you get real goofy when you're pregnant. That's my excuse and I'm sticking to it.

Sincerely,

Holly Hope
Holly Hope

