

RECEIVED  
MAY 02 1991  
NATIONAL REGISTER

United States Department of the Interior  
National Park Service

National Register of Historic Places  
Registration Form

This form is for use in nominating or requesting determinations of eligibility for individual properties or districts. See instructions in *Guidelines for Completing National Register Forms* (National Register Bulletin 16). Complete each item by marking "x" in the appropriate box or by entering the requested information. If an item does not apply to the property being documented, enter "N/A" for "not applicable." For functions, styles, materials, and areas of significance, enter only the categories and subcategories listed in the instructions. For additional space use continuation sheets (Form 10-900a). Type all entries.

1. Name of Property

historic name Oak Grove School

other names/site number N/A

2. Location

street & number South of State Highway 270

not for publication N/A

city, town Oak Grove Community

vicinity N/A

state Arkansas code AR county Grant

code AR 053 zip code 72150

3. Classification

Ownership of Property

- private
- public-local
- public-State
- public-Federal

Category of Property

- building(s)
- district
- site
- structure
- object

Number of Resources within Property

Contributing	Noncontributing
<u>1</u>	<u>      </u> buildings
<u>      </u>	<u>      </u> sites
<u>      </u>	<u>      </u> structures
<u>      </u>	<u>      </u> objects
<u>1</u>	<u>0</u> Total

Name of related multiple property listing:

N/A

Number of contributing resources previously listed in the National Register

N/A

4. State/Federal Agency Certification

As the designated authority under the National Historic Preservation Act of 1966, as amended, I hereby certify that this  nomination  request for determination of eligibility meets the documentation standards for registering properties in the National Register of Historic Places and meets the procedural and professional requirements set forth in 36 CFR Part 60. In my opinion, the property  meets  does not meet the National Register criteria.  See continuation sheet.

Cathryn A. Buford  
Signature of certifying official  
Arkansas Historic Preservation Program  
State or Federal agency and bureau

4-23-91  
Date

In my opinion, the property  meets  does not meet the National Register criteria.  See continuation sheet.

\_\_\_\_\_  
Signature of commenting or other official  
\_\_\_\_\_  
State or Federal agency and bureau

\_\_\_\_\_  
Date

5. National Park Service Certification

I, hereby, certify that this property is:

- entered in the National Register.  
 See continuation sheet.
- determined eligible for the National Register.  See continuation sheet.
- determined not eligible for the National Register.
- removed from the National Register.
- other, (explain:)

Patrick Andrews

6/14/91

\_\_\_\_\_  
Signature of the Keeper

\_\_\_\_\_  
Date of Action

**6. Function or Use**

Historic Functions (enter categories from instructions)

School

Current Functions (enter categories from instructions)

Church

**7. Description**

Architectural Classification  
(enter categories from instructions)

Other: WPA

Craftsman

Materials (enter categories from instructions)

foundation Concrete

walls Weatherboard

roof Asphalt

other

Describe present and historic physical appearance.

United States Department of the Interior  
National Park Service

# National Register of Historic Places Continuation Sheet

Section number 7 Page 1

---

## Summary

The Oak Grove School is a single-story, four-room structure constructed by the Works Progress Administration in 1938. The building is typical of WPA-constructed schoolhouses and features some Craftsman influences.

## Elaboration

The Oak Grove School is a single-story, four-room schoolhouse constructed by the WPA in 1938. The plan is rectangular and consists of a continuous concrete foundation supporting novelty-sided, wood-frame walls covered by a composition-shingled, gable-on-hipped roof. The rafters are exposed underneath the eaves in the traditional Craftsman style. There are two central interior chimneys.

The northern elevation features a central gable projecting porch supported by two square columns resting on a raised concrete platform. Two separate doors with six-pane transoms provide access to different rooms. Both were originally classrooms, but now the eastern door leads to the sanctuary which was created from the two eastern classrooms. There are no windows in the northern elevation.

The eastern elevation is fenestrated by four sets of tripled nine-over-nine double-hung windows symmetrically arranged. An overhanging shed porch shields an entrance at the southern end of this elevation. The southern elevation is blank.

The western elevation contains identical lighting arrangements as the eastern elevation with the addition of a projecting gable porch in the center. This porch likewise rests on two square columns and is highlighted by double doors with a twelve-pane transom.

Interior modifications have been minor considering the conversion to a church. The northwestern classroom is virtually unaltered and retains the original blackboard and the built-in coat closet. A six-pane pivot window located on the interior wall to enhance ventilation remains, as does the original door trim and six-pane transom of the doorway entering the southwestern classroom. This room has been divided into multiple rooms for Sunday School. The northeastern and southeastern classrooms were combined to form the sanctuary, and colored glass replaced the original clear window panes. The southeastern classroom originally contained a stage at the southern end.

Although the interior has undergone some alterations in its conversion to a church, one room remains as an excellent representative of a 1930's era classroom. The exterior appears virtually unaltered since its construction in 1938.

**8. Statement of Significance**

Certifying official has considered the significance of this property in relation to other properties:

nationally     statewide     locally

Applicable National Register Criteria     A     B     C     D

Criteria Considerations (Exceptions)     A     B     C     D     E     F     G

Areas of Significance (enter categories from instructions)  
Architecture

Period of Significance  
1938

Significant Dates  
N/A

Cultural Affiliation  
N/A

Significant Person  
N/A

Architect/Builder  
WPA

State significance of property, and justify criteria, criteria considerations, and areas and periods of significance noted above.

See continuation sheet

**9. Major Bibliographical References**

Previous documentation on file (NPS):

- preliminary determination of individual listing (36 CFR 67) has been requested
- previously listed in the National Register
- previously determined eligible by the National Register
- designated a National Historic Landmark
- recorded by Historic American Buildings Survey # \_\_\_\_\_
- recorded by Historic American Engineering Record # \_\_\_\_\_

See continuation sheet

Primary location of additional data:

- State historic preservation office
- Other State agency
- Federal agency
- Local government
- University
- Other

Specify repository: \_\_\_\_\_

**10. Geographical Data**

Acreege of property Less than one

UTM References

A 

1	5
---	---

5	6	6	1	7	0
---	---	---	---	---	---

3	7	9	7	2	2	0
---	---	---	---	---	---	---

  
Zone Easting Northing

B 

--	--

--	--	--	--	--	--

--	--	--	--	--	--	--

  
Zone Easting Northing

C 

--	--

--	--	--	--	--	--

--	--	--	--	--	--	--

D 

--	--

--	--	--	--	--	--

--	--	--	--	--	--	--

See continuation sheet

**Verbal Boundary Description** Beginning at the intersection of the southern edge of Highway 270 and the line formed by the eastern elevation of the building, proceed southerly along said line to the point formed by the intersection of said line and the line formed by the southern elevation of the building; thence proceed westerly to a point formed by the intersection of said line and the line formed by the western elevation of the building; thence proceed northerly to a point formed by the intersection of said line and the southern edge of Highway 270; thence proceed easterly to the point of beginning.

See continuation sheet

**Boundary Justification**

This boundary includes all the property historically associated with this resource.

See continuation sheet

**11. Form Prepared By**

name/title Patrick Zollner/National Register Historian  
organization Arkansas Historic Preservation Program date 4/10/91  
street & number 225 East Markham, Suite 300 telephone (501) 324-9346  
city or town Little Rock state Arkansas zip code 72201

United States Department of the Interior  
National Park Service

National Register of Historic Places  
Continuation Sheet

Section number 8 Page 1

**Summary**

Criterion C, local significance

The Oak Grove School, located six miles east of Sheridan in Grant County, is being nominated under Criterion C with local significance as the best example of a Works Progress Administration-constructed schoolhouse in the area. The four-room structure operated as a public school from 1938 until the 1949-1950 school year.

**Elaboration**

The Oak Grove Community is located six miles east of Sheridan in Washington Township. Originally located in Jefferson County, the community has changed its traditional boundaries over the years and was probably sparsely inhabited prior to the creation of Grant County in 1869. Although Oak Grove was never an established town or even a well-defined community, generations of residents constructed churches, mills, and businesses to accommodate their needs.

In 1938, several schools in the area were consolidated to form School District #24. Because of its geographical location in the center of the new district, the Oak Grove Community was chosen as the site for the new school. The Works Progress Administration employed local craftsmen for the construction of the new four-room schoolhouse. On completion in 1938, the *Sheridan Headlight* mentioned the new building's "modern" interior furnishings and described the new structure as "a credit to the community and to the State of Arkansas." The new schoolhouse was dedicated during a special program in March 1939.

As evidence of the importance of the new school building to the community, and as a reflection of the growth in the region, J. A. Waddell, Grant County Judge from 1894 to 1898 and from 1916 to 1919, recounted:

I am glad to see the improvements here. At the close of the Civil War, there were only two settlements on the road from Pine Bluff to Oak grove [sic] and only a few houses visable [sic]. Today (1939), all the way are nice white houses as far as one can see on each side of the road. Shows you how fast the state has grown in all sections. Hurrah for Grant County!

The new WPA structure did not last long as a schoolhouse, however. In 1949, the school district was consolidated with the Sheridan school district. Since that date, the structure has been utilized as the Center Grove Methodist Church. A few modest interior modifications were made to effect this conversion. The glass window panes on the eastern side of the structure were replaced with colored glass; however, the window sash and muntins were not disturbed. The exterior of the building is virtually unchanged and appears as it did in 1938.

**United States Department of the Interior  
National Park Service**

# **National Register of Historic Places Continuation Sheet**

Section number 8 Page 2

---

The Oak Grove School is significant under Criterion C as the best example of a WPA constructed frame schoolhouse in the area. There are no other extant WPA constructed frame school buildings in Grant County. The structure is well-maintained and an excellent representative of the era in which it was built.

United States Department of the Interior  
National Park Service

**National Register of Historic Places  
Continuation Sheet**

Section number   9   Page   1  

---

**Bibliography**

Goolsby, Elwin L. and Kay M. *Golden Memories: A Photographic Album of Grant County*. Sheridan: Grant County Museum, 1986.

Goolsby, Elwin L. *Our Timberland Home: A History of Grant County*. Little Rock: Rose Publishing Company, 1984.

Grant County Museum Archives/Vertical File materials.

Grant County School Board records, 1923-38.

Grant County Clerk's Office records.

*Interview or communication with Brenda Hall and Elwin Goolsby.*

*Sheridan Headlight*. March 16, 1922; April 20, 1922; September 7, 1922; September 28, 1922; September 5, 1927; February 2, 1939 (Booster Edition); March 29, 1939; and June 2, 1949.

*Sheridan High School Annual*, 1950.

United States Department of the Interior  
National Park Service

# National Register of Historic Places Continuation Sheet

Section number \_\_\_\_\_ Page \_\_\_\_\_

### SUPPLEMENTARY LISTING RECORD

NRIS Reference Number: 91000693

Date Listed: 6/14/91

Oak Grove School  
Property Name

Grant  
County

ARKANSAS  
State

#### Multiple Name

-----  
This property is listed in the National Register of Historic Places in accordance with the attached nomination documentation subject to the following exceptions, exclusions, or amendments, notwithstanding the National Park Service certification included in the nomination documentation.

*for* Patrick Andrus  
Signature of the Keeper

6/14/91  
Date of Action

#### Amended Items in Nomination:

Section No. 8

This nomination is amended to add Criteria Consideration A, since the former school is now being used as a church.

The amendment has been confirmed by phone with the Arkansas SHPO (6/14/91).

#### DISTRIBUTION:

- National Register property file
- Nominating Authority (without nomination attachment)

UNITED STATES DEPARTMENT OF THE INTERIOR  
NATIONAL PARK SERVICE

NATIONAL REGISTER OF HISTORIC PLACES  
EVALUATION/RETURN SHEET

REQUESTED ACTION: NOMINATION

PROPERTY NAME: Oak Grove School

MULTIPLE NAME:

STATE & COUNTY: ARKANSAS, Grant

DATE RECEIVED: 5/02/91 DATE OF PENDING LIST: 5/20/91  
DATE OF 16TH DAY: 6/05/91 DATE OF 45TH DAY: 6/16/91  
DATE OF WEEKLY LIST:

REFERENCE NUMBER: 91000693

NOMINATOR: STATE

REASONS FOR REVIEW:

APPEAL: N DATA PROBLEM: N LANDSCAPE: N LESS THAN 50 YEARS: N  
OTHER: N PDIL: N PERIOD: N PROGRAM UNAPPROVED: N  
REQUEST: N SAMPLE: N SLR DRAFT: Y NATIONAL: N

COMMENT WAIVER: N

ACCEPT  RETURN  REJECT 6/14/91 DATE

ABSTRACT/SUMMARY COMMENTS:

This small frame former school house, now used as a church, is architecturally significant as the best example of a WPA school construction project in its area.

RECOM./CRITERIA Accept / C  
REVIEWER Harper  
DISCIPLINE Historian  
DATE 6/14/91

DOCUMENTATION see attached comments Y/N see attached SLR Y N

---

CLASSIFICATION

count       resource type

---

STATE/FEDERAL AGENCY CERTIFICATION

---

FUNCTION

historic       current

---

DESCRIPTION

architectural classification  
 materials  
 descriptive text

---

SIGNIFICANCE

Period      Areas of Significance--Check and justify below

Specific dates      Builder/Architect  
Statement of Significance (in one paragraph)

summary paragraph  
 completeness  
 clarity  
 applicable criteria  
 justification of areas checked  
 relating significance to the resource  
 context  
 relationship of integrity to significance  
 justification of exception  
 other

---

BIBLIOGRAPHY

---

GEOGRAPHICAL DATA

acreage       verbal boundary description  
 UTMs       boundary justification

---

ACCOMPANYING DOCUMENTATION/PRESENTATION

sketch maps     USGS maps     photographs     presentation

---

OTHER COMMENTS

Questions concerning this nomination may be directed to

\_\_\_\_\_ Phone \_\_\_\_\_

Signed \_\_\_\_\_ Date \_\_\_\_\_



Oak Grove School

Grant CD

Oak Grove Comm., Arkansas

Photographed by Patrick Zolhen

January 1991

Negatives on file at AHPP

View from the northwest



Oak Grove School      *Shuntce*

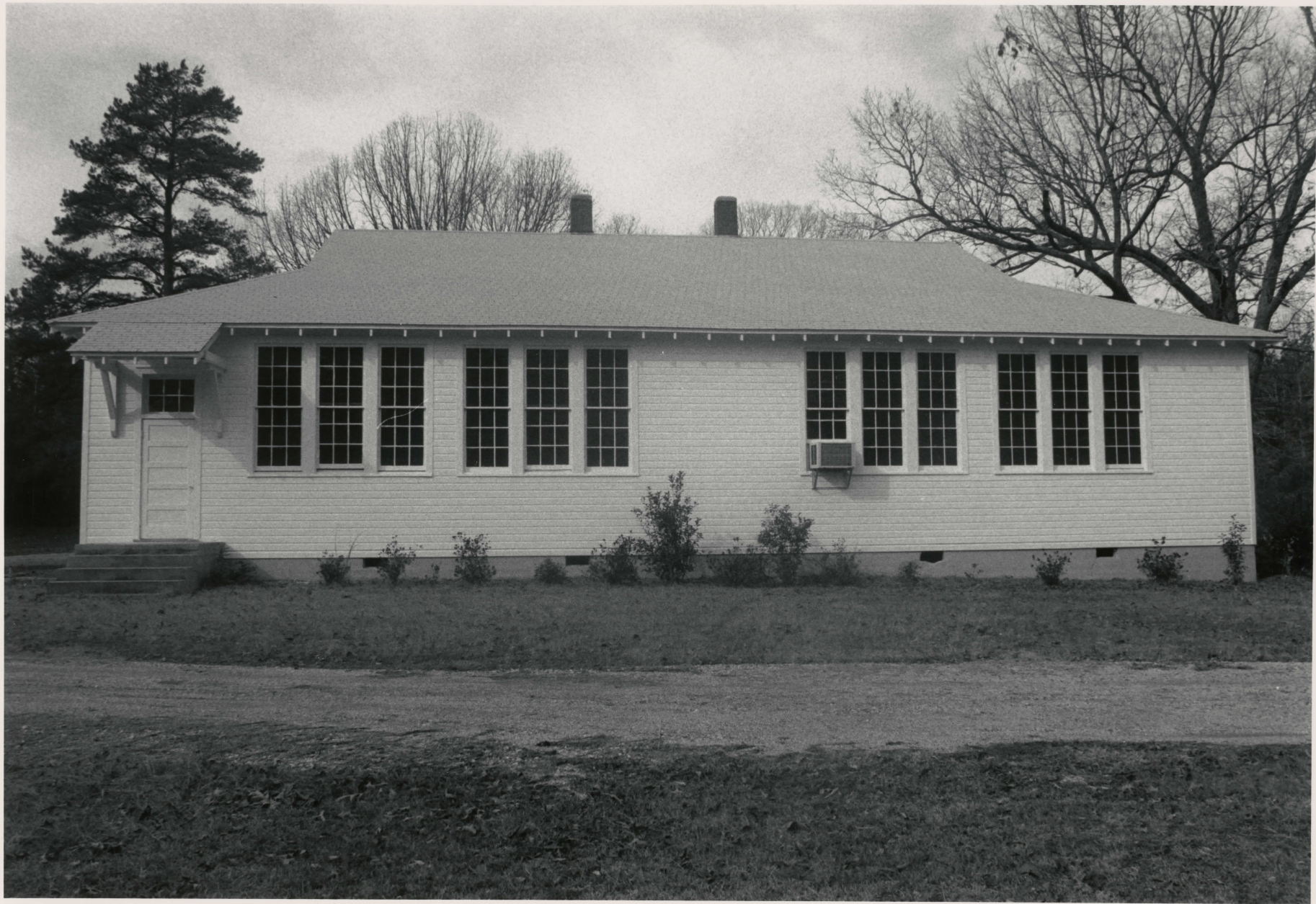
Oak Grove Comm., Arkansas

Photographed by Patrick Zollner

January 1991

Negatives on file at AHPP

View from the northeast



Oak Grove School  
Oak Grove Community, Arkansas  
Photographed by Patrick Zolher  
January 1991  
Negatives on file at AHPP  
View from the east



Oak Grove School

Grant Co

Oak Grove Comm., Arkansas

Photographed by Patrick Zollner

January 1991

Negatives on file at AHPP

View from southeast



Oak Grove School      Shunt W  
Oak Grove Comm., Arkansas  
Photographed by Patrick Zolner  
January 1991  
Negatives on file at AHPP  
View from southwest



Oak Grove School *Grant*

Oak Grove Comm., Arkansas

Photographed by Patrick Zolner


January 1991

Negatives on file at AHPP

View from the west.



Oak Grove School  
Oak Grove Comm., Arkansas *Grant Co*  
Photographed by Patrick Zolner  
January 1991  
Negatives on file at AHP  
View of northern entrance

A black and white photograph of a concrete wall. The top portion of the wall is covered in horizontal siding. Below the siding, a shield-shaped stamp is embedded in the concrete. The stamp contains the text "USA", "1938", and "WPA" arranged vertically. The concrete shows signs of wear, including a crack to the right of the stamp and some surface pitting. In the foreground, there are dark, leafy plants and some bare branches.

USA  
1938  
WPA

Oak Grove School      Aunt a  
Oak Grove Comm., Arkansas  
Photographed by Patrick Zolner  
January 1991  
Negatives on file at AHPP  
View of cornerstone



Oak Grove School

Oak Grove Comm., Arkansas

Photographed by Patrick Zollner

Gruntz

January 1991

Negatives on file at AHPP

View of window in interior classroom



Oak Grove School  
Oak Grove Comm., Arkansas

Grant Co

Photographed by Patrick Zolner

January 1991

Negatives on file at AHPP

View of eastern classroom converted into chapel.

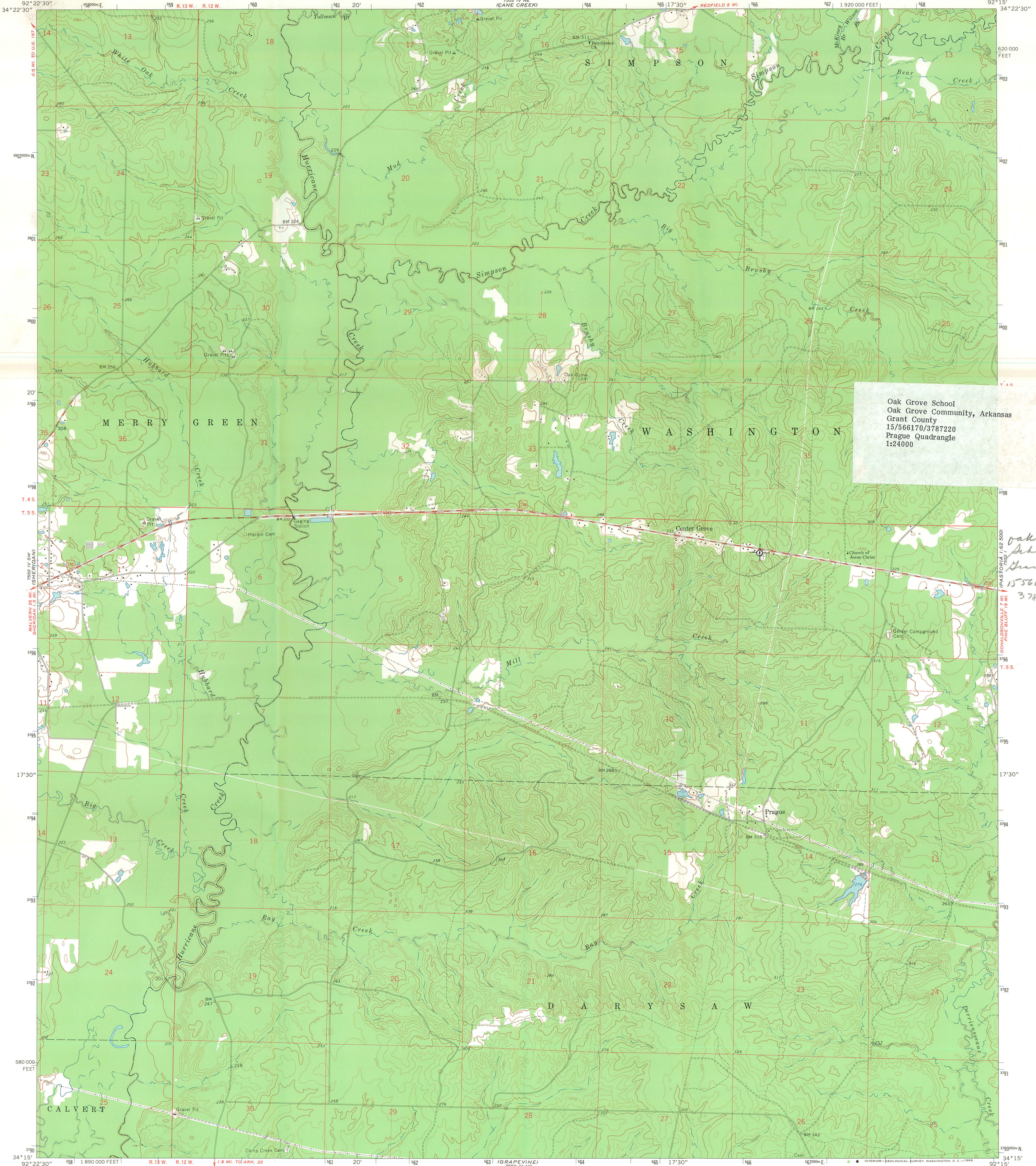


Oak Grove School Mount Ce  
Oak Grove Comm., Arkansas

Photographed by Patrick Zolner

January 1991

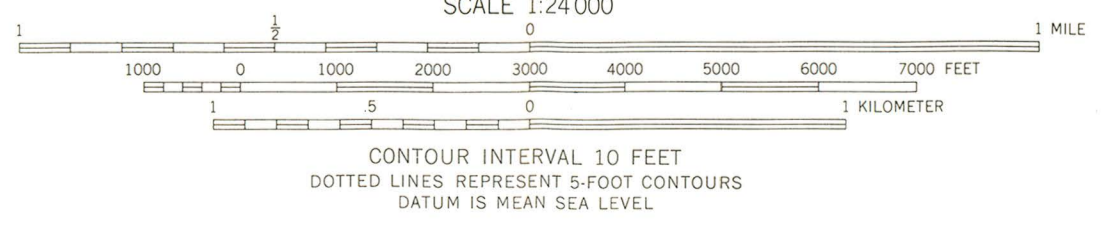
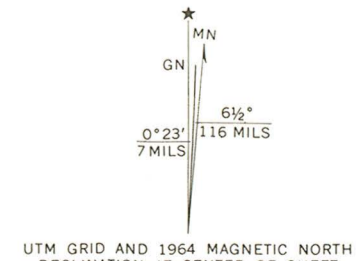
Negatives on file at AHPP  
View of chapel



Oak Grove School  
Oak Grove Community, Arkansas  
Grant County  
15/566170/3787220  
Prague Quadrangle  
1:24000

*Oak Grove School  
Grant Co Ark  
15566170  
3787220*

Mapped, edited, and published by the Geological Survey  
Control by USGS and USC&GS  
Topography by photogrammetric methods from aerial  
photographs taken 1961 and 1964. Field checked 1964  
Polyconic projection. 1927 North American datum  
10,000-foot grid based on Arkansas coordinate system, south zone  
1000-meter Universal Transverse Mercator grid ticks,  
zone 15, shown in blue  
Fine red dashed lines indicate selected fence and field lines where  
generally visible on aerial photographs. This information is unchecked



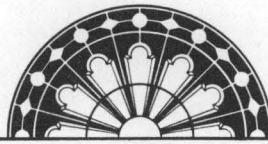
ROAD CLASSIFICATION  
Medium-duty ——— Light-duty ———  
Unimproved dirt - - - - - U.S. Route

THIS MAP COMPLIES WITH NATIONAL MAP ACCURACY STANDARDS  
FOR SALE BY U. S. GEOLOGICAL SURVEY, DENVER, COLORADO 80225 OR WASHINGTON, D. C. 20242  
AND BY THE ARKANSAS GEOLOGICAL COMMISSION, LITTLE ROCK, ARKANSAS  
A FOLDER DESCRIBING TOPOGRAPHIC MAPS AND SYMBOLS IS AVAILABLE ON REQUEST

PRAGUE, ARK.  
N3415—W9215/7.5

1964

AMS 7552 IV SE—SERIES V884



ARKANSAS  
HISTORIC  
PRESERVATION  
PROGRAM

RECEIVED

MAY 02 1991

NATIONAL  
REGISTER

April 23, 1991

Carol D. Shull  
Chief of Registration  
United States Department of the Interior  
National Register of Historic Places  
National Park Service  
1100 "L" Street, NW  
Washington, DC 20240

RE: Oak Grove School  
Oak Grove Community - Grant County, Arkansas

Dear Carol:

We are enclosing for your review the nomination of the above referenced property. The Arkansas Historic Preservation Program has complied with all applicable nominating procedures and notification requirements in the nomination process.

Thank you for your consideration in this matter.

Sincerely,

Cathy Buford  
State Historic Preservation Officer

CB:kg

Enclosures

