

RECEIVED FEB 23 1990

538

United States Department of the Interior National Park Service

National Register of Historic Places Registration Form

DIVISION OF NATIONAL REGISTER PROGRAMS NATIONAL PARK SERVICE

This form is for use in nominating or requesting determinations of eligibility for individual properties or districts. See instructions in Guidelines for Completing National Register Forms (National Register Bulletin 16). Complete each item by marking "x" in the appropriate box or by entering the requested information. If an item does not apply to the property being documented, enter "N/A" for "not applicable." For functions, styles, materials, and areas of significance, enter only the categories and subcategories listed in the instructions. For additional space use continuation sheets (Form 10-900a). Type all entries.

1. Name of Property

historic name Little Cossatot River Bridge

other names/site number HAER No. AR-35

2. Location

street & number County Road #139H, spanning the Little Cossatot River not for publication N/A

city, town Lockesburg vicinity

state Arkansas code 05 county Sevier code 133 zip code 71846

3. Classification

Ownership of Property

- private
[X] public-local
public-State
public-Federal

Category of Property

- building(s)
district
site
[X] structure
object

Number of Resources within Property

Table with 2 columns: Contributing, Noncontributing. Rows for buildings, sites, structures, objects, Total. Values: 1, 1.

Name of related multiple property listing:

Historic Bridges of Arkansas

Number of contributing resources previously listed in the National Register N/A

4. State/Federal Agency Certification

As the designated authority under the National Historic Preservation Act of 1966, as amended, I hereby certify that this [X] nomination [] request for determination of eligibility meets the documentation standards for registering properties in the National Register of Historic Places and meets the procedural and professional requirements set forth in 36 CFR Part 60. In my opinion, the property [X] meets [] does not meet the National Register criteria. [] See continuation sheet.

Signature of certifying official: Catherine H. Boyd
Arkansas Historic Preservation Program
State or Federal agency and bureau

Date: 2-13-90

In my opinion, the property [] meets [] does not meet the National Register criteria. [] See continuation sheet.

Signature of commenting or other official
State or Federal agency and bureau

Date

5. National Park Service Certification

I, hereby, certify that this property is:

- [X] entered in the National Register.
[] See continuation sheet.
[] determined eligible for the National Register. [] See continuation sheet.
[] determined not eligible for the National Register.
[] removed from the National Register.
[] other, (explain):

Signature of the Keeper: Ray Federman

Date of Action: 4/6/90

Signature of the Keeper

Date of Action

6. Function or Use

Historic Functions (enter categories from instructions)

Transportation/Road-Related

Current Functions (enter categories from instructions)

Transportation/Road-Related

7. Description

Architectural Classification

(enter categories from instructions)

Other: Warren pony-truss

Materials (enter categories from instructions)

foundation steel/concrete

walls steel

roof

other

Describe present and historic physical appearance.

State Abbreviation: code US County: zip code 19340

Table with 3 columns: Ownership of Property, Category of Property, and Number of Resources within Property. Includes checkboxes for public/private ownership and building/site/structure/object categories.

Name of related multiple property listing: National Register of Historic Places

4. State/Federal Agency Certification

As the designated authority under the National Historic Preservation Act of 1966, as amended, I hereby certify that this [] nomination [] request for determination of eligibility meets the documentation standards for registering properties in the National Register of Historic Places and meets the procedural and professional requirements set forth in 36 CFR Part 60. In my opinion, the property [] meets [] does not meet the National Register criteria. [] See continuation sheet.

Signature of certifying official: Date

5. National Park Service Certification

I hereby certify that this property is [] included in the National Register [] determined eligible for the National Register [] determined not eligible for the National Register.

[X] See continuation sheet

Date of Action: Signature of the Keeper

8. Statement of Significance

Certifying official has considered the significance of this property in relation to other properties:

nationally statewide locally

Applicable National Register Criteria A B C D

Criteria Considerations (Exceptions) A B C D E F G

Areas of Significance (enter categories from instructions)

Transportation
Engineering

Period of Significance

1908-1922

Significant Dates

1908

Cultural Affiliation

N/A

Significant Person

N/A

Architect/Builder

Builder: Morava Construction Company

State significance of property, and justify criteria, criteria considerations, and areas and periods of significance noted above.

UTM References
Zone: Easting
Zone: Nothing

UTM References
Zone: Easting
Zone: Nothing

See continuation sheet

Verbal Boundary Description

Beginning at a point approximately 4,000 feet east of the Locksburg City limit boundary on County Road 1194, the boundary of the Little Connor River Bridge starts here at the east apartment, where it continues west across the Little Connor River for approximately 104 feet where it terminates at the west apartment.

See continuation sheet

Boundary Justification

The boundary includes the main span, approach water, pier, and apartments that are historically associated with this property.

See continuation sheet

Form Prepared By

See continuation sheet

9. Major Bibliographical References

See Historic Bridges of Arkansas, Multiple Property Nomination, Section H.

A B C D
 A B C D E F G

Significant Dates _____
 Period of Significance _____
 Areas of Significance (enter categories from instructions) _____
 Cultural Affiliation _____

- Previous documentation on file (NPS):
- preliminary determination of individual listing (36 CFR 67) has been requested
 - previously listed in the National Register
 - previously determined eligible by the National Register
 - designated a National Historic Landmark
 - recorded by Historic American Buildings Survey # _____
 - recorded by Historic American Engineering Record # HAER No. AR-35

- See continuation sheet
- Primary location of additional data:
- State historic preservation office
 - Other State agency
 - Federal agency
 - Local government
 - University
 - Other
- Specify repository:
 U.S. Library of Congress

10. Geographical Data

Acreeage of property Less than one acre

UTM References

A	<u>1</u> <u>5</u>	<u>3</u> <u>8</u> <u>8</u> <u>6</u> <u>8</u> <u>5</u>	<u>3</u> <u>7</u> <u>5</u> <u>9</u> <u>8</u> <u>2</u> <u>5</u>	B	<u> </u> <u> </u> <u> </u> <u> </u> <u> </u> <u> </u>	<u> </u> <u> </u> <u> </u> <u> </u> <u> </u> <u> </u>	<u> </u> <u> </u> <u> </u> <u> </u> <u> </u> <u> </u>
	Zone	Easting	Northing		Zone	Easting	Northing
C	<u> </u> <u> </u> <u> </u> <u> </u> <u> </u> <u> </u>	<u> </u> <u> </u> <u> </u> <u> </u> <u> </u> <u> </u>	<u> </u> <u> </u> <u> </u> <u> </u> <u> </u> <u> </u>	D	<u> </u> <u> </u> <u> </u> <u> </u> <u> </u> <u> </u>	<u> </u> <u> </u> <u> </u> <u> </u> <u> </u> <u> </u>	<u> </u> <u> </u> <u> </u> <u> </u> <u> </u> <u> </u>

See continuation sheet

Verbal Boundary Description

Beginning at a point approximately 4,050 feet east of the Lockesburg City limit boundary on County Road # 139H, the boundary of the Little Cossatot River Bridge starts here at the east abutment, where it continues west across the Little Cossatot River for approximately 104 feet where it terminates at the west abutment.

See continuation sheet

Boundary Justification

The boundary includes the main span, approach spans, piers and abutments that are historically associated with this property.

See continuation sheet

11. Form Prepared By

name/title Michael Swanda, Survey Coordinator
 organization Arkansas Historic Preservation Program date February 5, 1990
 street & number 225 East Markham Street telephone (501) 371-2763
 city or town Little Rock state Arkansas zip code 72201

**United States Department of the Interior
National Park Service**

**National Register of Historic Places
Continuation Sheet**

Section number 7 Page 1

The Little Cossatot River Bridge is a 70 foot long, steel, Warren pony-truss bridge. Two timber stringer approach spans measure 17 feet each and give the bridge a total length of 104 feet. The top chord of the Warren truss is a solid I-beam connected to the bottom chord by riveted plates. This connection rests directly on top of a cylindrical steel ring pier filled with concrete. Bearing blocks are not used. The bottom chord is the only built-up member in the truss and contains angles bolted together with batten plates. The diagonal and verticals are channels. I-beam floor girders at each vertical support timber stringers under the wood planked road deck. Channel outriggers extend out from the end of the floor girders at the first vertical on each end of the bridge.

This bridge is in fair condition and is being maintained by the county.

**United States Department of the Interior
National Park Service**

**National Register of Historic Places
Continuation Sheet**

Section number 8 Page 1

The Little Cossatot River Bridge is a unique Arkansas example of a steel, Warren pony-truss bridge with verticals. Designed by the relatively obscure Morava Construction Company of Chicago, Illinois, in 1908, this bridge exhibits unique design features not seen in other bridges of its type in the state. These features include a solid I-beam top chord and angle outriggers. Built during the Early Transportation Era: 1803-1922, it is an early example of a bolt connected (rather than rivet connected) bridge. It survives as the only documented Morava Construction Company bridge in Arkansas and is a significant example of early 20th-century bridge construction, reflecting a time when county officials relied heavily upon competing bridge companies to supply a relatively inexpensive and reliable product not manufactured in the state. As such, it is nominated under Criteria A and C with statewide significance.

2/23/90

United States Department of the Interior
National Park Service

National Register of Historic Places
Continuation Sheet

Section number _____ Page _____

Historic Bridges of Arkansas MPS	Baxter County, et al.	Date Listed
23. Lakeshore Drive Bridge	Entered in the National Register	<u>4/9/90</u>
24. Lincoln Avenue Viaduct		<u>4/9/90</u>
25. Second Street Bridge		<u>4/9/90</u>
26. Black River Bridge		<u>4/9/90</u>
27. St. Francis River Bridge AR 18		<u>4/9/90</u>
28. Saline River Bridge		<u>4/9/90</u>
29. Jenny Lind Bridge Substantive Review		<u>4/6/90</u>
30. Milltown Bridge Substantive Review		<u>4/6/90</u>
31. Little Cossatot River Bridge Substantive Review		<u>4/6/90</u>
32. Quachita River Bridge	Entered in the National Register	<u>4/9/90</u>
33. Wyman Bridge		<u>4/9/90</u>
34. Judsonia Bridge	Entered in the National Register	<u>4/9/90</u>
35. Augusta Bridge	Entered in the National Register	<u>4/9/90</u>
36. Achmun Creek Bridge Substantive Review		<u>4/9/90</u>
37. Spring Lake Bridge Substantive Review		<u>Ret</u>
38. St. Francis River Bridge HS 70 AR 20		<u>4/9/90</u>
39. Galla Creek Bridge		

UNITED STATES DEPARTMENT OF THE INTERIOR
NATIONAL PARK SERVICE

NATIONAL REGISTER OF HISTORIC PLACES
EVALUATION/RETURN SHEET

REQUESTED ACTION: NOMINATION

PROPERTY NAME: Little Cossatot River Bridge

MULTIPLE NAME: Historic Bridges of Arkansas MPS

STATE & COUNTY: ARKANSAS, Sevier

DATE RECEIVED: 2/23/90 DATE OF PENDING LIST: 3/06/90
DATE OF 16TH DAY: 3/22/90 DATE OF 45TH DAY: 4/09/90
DATE OF WEEKLY LIST:

REFERENCE NUMBER: 90000538

NOMINATOR: STATE

REASONS FOR REVIEW:

APPEAL: N DATA PROBLEM: N LANDSCAPE: N LESS THAN 50 YEARS: N
OTHER: Y PDIL: N PERIOD: N PROGRAM UNAPPROVED: N
REQUEST: N SAMPLE: N SLR DRAFT: N NATIONAL: N

COMMENT WAIVER: N

ACCEPT RETURN REJECT 4/6/90 DATE

ABSTRACT/SUMMARY COMMENTS:

RECOM./CRITERIA Accept A/C
REVIEWER A Federal
DISCIPLINE Arch Hist
DATE 4/6/90

DOCUMENTATION see attached comments Y/N see attached SLR Y/N

CLASSIFICATION

___count ___resource type

STATE/FEDERAL AGENCY CERTIFICATION

FUNCTION

___historic ___current

DESCRIPTION

___architectural classification
___materials
___descriptive text

SIGNIFICANCE

Period Areas of Significance--Check and justify below

Specific dates Builder/Architect
Statement of Significance (in one paragraph)

___summary paragraph
___completeness
___clarity
___applicable criteria
___justification of areas checked
___relating significance to the resource
___context
___relationship of integrity to significance
___justification of exception
___other

BIBLIOGRAPHY

GEOGRAPHICAL DATA

___acreage ___verbal boundary description
___UTMs ___boundary justification

ACCOMPANYING DOCUMENTATION/PRESENTATION

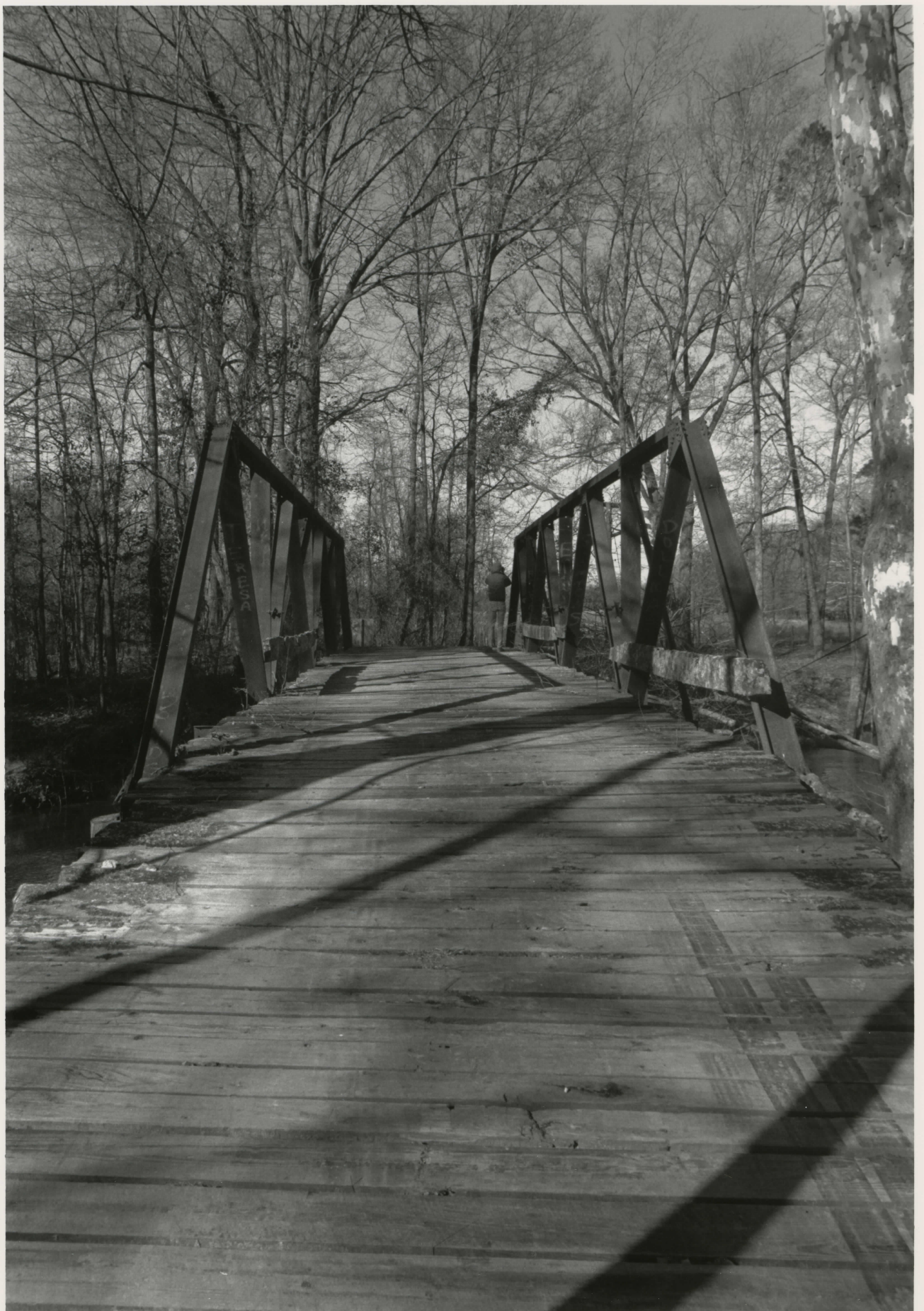
___sketch maps ___USGS maps ___photographs ___presentation

OTHER COMMENTS

Questions concerning this nomination may be directed to

Phone

Signed Date



LITTLE COSSATOT RIVER BRIDGE

LOCKESBURG VIC., ARKANSAS

SEVIER COUNTY

PHOTOGRAPHER, JOE DeROSE

FEBRUARY, 1989

NEGATIVE OF FILE AT AHPP

VIEW LOOKING WEST



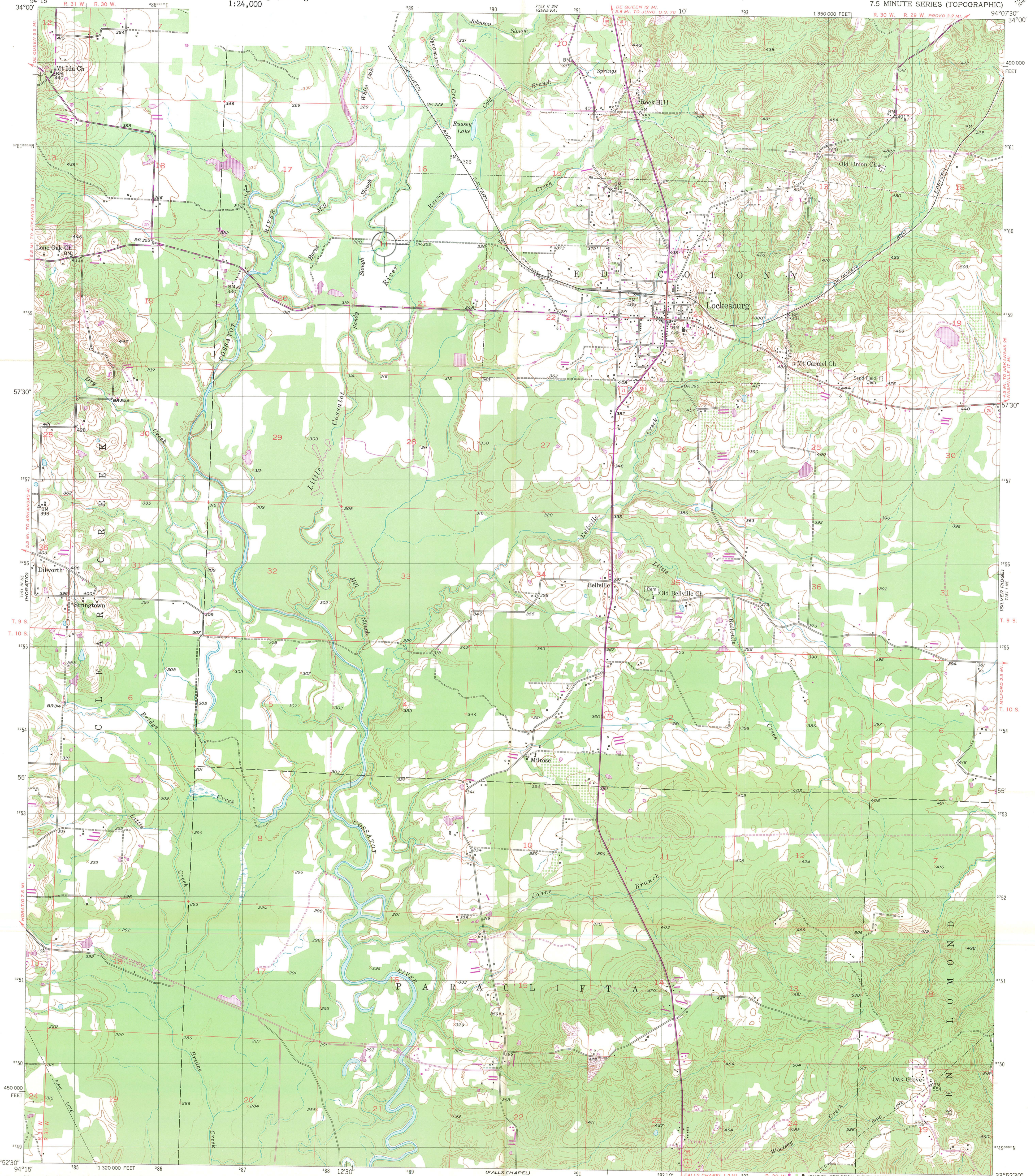
LITTLE COSSATOT RIVER BRIDGE
LOCKESBURG VIC., ARKANSAS
SEVIER COUNTY

PHOTOGRAPHER, JOE DEROSE

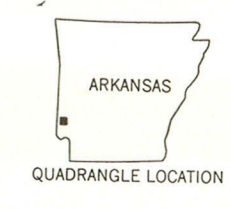
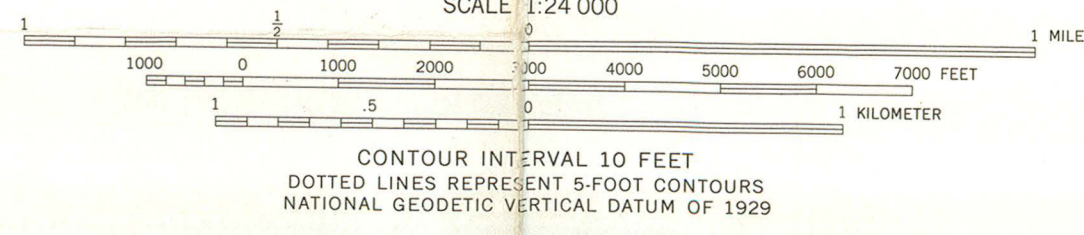
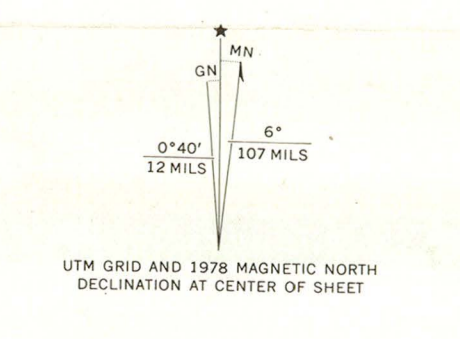
FEBRUARY, 1989

NEGATIVE ON FILE AT AHPP

VIEW LOOKING NORTHWEST



Mapped, edited, and published by the Geological Survey
Control by USGS and USC&GS
Culture and drainage in part compiled from aerial photographs taken 1949. Topography by plane-table methods 1950-1951
Polyconic projection. 1927 North American datum
10,000-foot grid based on Arkansas coordinate system, south zone
1000-meter Universal Transverse Mercator grid, zone 15
Revisions shown in purple compiled from aerial photographs taken 1976 and other source data. This information not field checked. Map edited 1978



ROAD CLASSIFICATION

Heavy-duty	4 LANE 16 LANE	Light-duty
Medium-duty	4 LANE 16 LANE	Unimproved dirt
U.S. Route		State Route

THIS MAP COMPLIES WITH NATIONAL MAP ACCURACY STANDARDS
FOR SALE BY U.S. GEOLOGICAL SURVEY, DENVER, COLORADO 80225, OR RESTON, VIRGINIA 22092
AND ARKANSAS GEOLOGICAL COMMISSION, LITTLE ROCK, ARKANSAS 72204
A FOLDER DESCRIBING TOPOGRAPHIC MAPS AND SYMBOLS IS AVAILABLE ON REQUEST

LOCKESBURG, ARK.
N 3352.5 - W 9407.5/7.5
1951
PHOTOREVISED 1978
AMS 7151 I NW-SERIES V884