

RECEIVED FEB 23 1990

519

United States Department of the Interior National Park Service

National Register of Historic Places Registration Form

DIVISION OF NATIONAL REGISTER PROGRAMS NATIONAL PARK SERVICE

This form is for use in nominating or requesting determinations of eligibility for individual properties or districts. See instructions in Guidelines for Completing National Register Forms (National Register Bulletin 16). Complete each item by marking "x" in the appropriate box or by entering the requested information. If an item does not apply to the property being documented, enter "N/A" for "not applicable." For functions, styles, materials, and areas of significance, enter only the categories and subcategories listed in the instructions. For additional space use continuation sheets (Form 10-900a). Type all entries.

1. Name of Property

historic name Harp Creek Bridge

other names/site number HAER No. AR-9

2. Location

street & number State Highway 7, spanning Harp Creek

not for publication N/A

city, town Jasper

vicinity

state Arkansas

code 05

county Newton

code 101

zip code 72641

3. Classification

Ownership of Property

- private, public-local, public-State (checked), public-Federal

Category of Property

- building(s), district, site, structure (checked), object

Number of Resources within Property

Table with columns: Contributing, Noncontributing, buildings, sites, structures, objects, Total. Values: 1, 1.

Name of related multiple property listing: Historic Bridges of Arkansas

Number of contributing resources previously listed in the National Register N/A

4. State/Federal Agency Certification

As the designated authority under the National Historic Preservation Act of 1966, as amended, I hereby certify that this nomination request for determination of eligibility meets the documentation standards for registering properties in the National Register of Historic Places and meets the procedural and professional requirements set forth in 36 CFR Part 60. In my opinion, the property meets does not meet the National Register criteria. See continuation sheet.

Cathryn H. Byrd (signature) Arkansas Historic Preservation Program

2-13-90 (date)

In my opinion, the property meets does not meet the National Register criteria. See continuation sheet.

Signature of commenting or other official State or Federal agency and bureau

Date

5. National Park Service Certification

I, hereby, certify that this property is:

- entered in the National Register. (checked) See continuation sheet. determined eligible for the National Register. See continuation sheet. determined not eligible for the National Register. removed from the National Register. other, (explain):

William Byrd (signature)

entered in the National Register

4/9/90 (date)

for Signature of the Keeper

Date of Action

**6. Function or Use**

Historic Functions (enter categories from instructions)

Transportation/Road-Related

Current Functions (enter categories from instructions)

Transportation/Road-Related

**7. Description**

Architectural Classification  
(enter categories from instructions)

Other: Open Spandrel, Deck Arch

Materials (enter categories from instructions)

foundation concrete  
walls concrete  
steel  
roof  
other

Describe present and historic physical appearance.

state address code city town township street & number

Classification: public-federal, public-state, public-local, private. Category of Property: object, structure, site, district, building. Number of Resources within Property: Contributing, Noncontributing.

State/Federal Agency Certification. As the designated authority under the National Historic Preservation Act of 1966, as amended, I hereby certify that this nomination meets the criteria for determination of eligibility...

In my opinion, the property meets / does not meet the National Register criteria. See continuation sheet.

National Park Service Certification. I hereby certify that this property meets the criteria for listing in the National Register.

See continuation sheet

**United States Department of the Interior  
National Park Service**

**National Register of Historic Places  
Continuation Sheet**

Section number 7 Page 1

---

**SUMMARY**

Located in the Ozark Mountain region of north-central Arkansas, the Harp Creek Bridge is an open spandrel, reinforced-concrete deck arch. Its single span supplies access across Harp Creek, a small tributary of the Buffalo River, on State Highway 7 approximately 1.5 miles north of the small town of Pruitt. It is in good condition and unaltered.

**ELABORATION**

The 117 foot long, 23 foot wide bridge is supported by two arched ribs 16 feet apart. The 69 foot long arches spring from two piers 24 feet from the masonry abutments at either end of the bridge deck. The ribs thicken slightly toward the haunches from a two foot thickness at the crown. The arches are connected by beams midway from the springline to the crown.

Eight reinforced concrete spandrel columns and a pilaster at each pier, square in section with caps and bases, rise from each arch rib to support ten floor girders. Four stringers carry the load from the reinforced concrete slab deck to the girders. The outer stringers are directly over the ribs and hide the two spandrel columns nearest the arch crown. The other two stringers are five feet inside the ribs.

The arch of the bridge is continued as a motif in a pattern on the outer face of each pier and on the posts on the deck directly above each pier. The original plans also called for a shallow arch motif between the verticals to echo the basic form of the bridge. Instead the stringers were made deeper, and a straight edge separates each vertical. A reinforced concrete balustrade with arched openings serves as a handrail.

The Harp Creek Bridge is currently in good condition and is being maintained by the Arkansas Highway and Transportation Department.

GHIEFTAIN BOND  
50% COTTON FIBER

**8. Statement of Significance**

Certifying official has considered the significance of this property in relation to other properties:

nationally  statewide  locally

Applicable National Register Criteria  A  B  C  D

Criteria Considerations (Exceptions)  A  B  C  D  E  F  G

Areas of Significance (enter categories from instructions)

Transportation

Engineering

\_\_\_\_\_

\_\_\_\_\_

\_\_\_\_\_

\_\_\_\_\_

\_\_\_\_\_

Significant Person

N/A

Period of Significance

1928-1939

\_\_\_\_\_

\_\_\_\_\_

Significant Dates

1928

\_\_\_\_\_

\_\_\_\_\_

Cultural Affiliation

N/A

\_\_\_\_\_

\_\_\_\_\_

Architect/Builder

Architect: Arkansas Highway & Transportation

Builder: Luton Bridge Company

State significance of property, and justify criteria, criteria considerations, and areas and periods of significance noted above.

\_\_\_\_\_

\_\_\_\_\_

\_\_\_\_\_

\_\_\_\_\_

\_\_\_\_\_

\_\_\_\_\_

\_\_\_\_\_

\_\_\_\_\_

\_\_\_\_\_

\_\_\_\_\_

\_\_\_\_\_

See continuation sheet

**9. Major Bibliographical References**

See Historic Bridges of Arkansas, Multiple Property Nomination, Section H.

**Previous documentation on file (NPS):**

- preliminary determination of individual listing (36 CFR 67) has been requested
- previously listed in the National Register
- previously determined eligible by the National Register
- designated a National Historic Landmark
- recorded by Historic American Buildings Survey # \_\_\_\_\_
- recorded by Historic American Engineering Record # HAER No. AR-9

See continuation sheet

**Primary location of additional data:**

- State historic preservation office
- Other State agency
- Federal agency
- Local government
- University
- Other

**Specify repository:**

U.S. Library of Congress

**10. Geographical Data**

Acreeage of property Less than one acre

**UTM References**

A 15 | 487 | 650 | 39 | 92 | 930  
 Zone Easting Northing

C | | | | | | | | | | | | | | | |

B 15 | 487 | 665 | 39 | 92 | 905  
 Zone Easting Northing

D | | | | | | | | | | | | | | | |

See continuation sheet

**Verbal Boundary Description**

Beginning at a point approximately 1,850 feet north of the intersection of County Road at bench mark 892 and State Highway 5, the Harp Creek Bridge boundary starts here at the south end of the south approach, continues north across Harp Creek for approximately 117 feet, and terminates at the end of the north approach.

See continuation sheet

**Boundary Justification**

The boundary includes the main span, approach spans, piers and abutments that are historically associated with this property.

See continuation sheet

**11. Form Prepared By**

name/title Text by Sean O'Reilly & Corinne Smith; edited by Michael Swanda

organization Arkansas Historic Preservation Program date February 5, 1990

street & number 225 East Markham telephone (501) 371-2763

city or town Little Rock state Arkansas zip code 72201

United States Department of the Interior  
National Park Service

# National Register of Historic Places Continuation Sheet

Section number 8 Page 1

---

## SUMMARY

The Harp Creek Bridge is an excellent example of the smaller, single span, reinforced-concrete, open spandrel, deck arch bridge type. Erected as one of two bridges in a Newton County road project, Harp Creek Bridge is an example of the more architectural of the small Highway Department bridges. It was built in 1928 by the Little Rock branch of the Luten Bridge Company, a company which, after its renowned founder Daniel B. Luten, specialized in reinforced concrete arch bridges. Harp Creek remains today as one of only ten unaltered open spandrel deck arches in Arkansas and is reflective of the Arkansas Highway and Transportation Department Era: 1923-1939. As such, it is nominated under Criteria A and C with state wide significance.

## ELABORATION

The bridge over Harp creek on Route 7 in Newton County was built in 1928 as part of a single project involving two bridges on that route.<sup>1</sup> The bridge, a concrete deck arch of 65 feet with two approach spans, was let to contractors together with a second bridge, over Mill Creek, which consisted of three 31-foot deck girder spans.<sup>2</sup>

The project was undertaken to improve the scenic Highway No. 7, "a connection between No. 65 at Harrison and No. 70 near Hot Springs through Russellville, crossing the backbone of the Boston Mountains."<sup>3</sup> However, the improvement of Highway No. 7 was not the sole reason for undertaking the construction of these bridges. In a letter from Division Engineer W. M. Mitchell, to the bridge engineer of the State Highway Department, N. B. Garver, it was noted that "to date we have nothing going in this county except a small state project and it is very imperative we get some work underway."<sup>4</sup> Clearly, an appreciation of the balance of road projects throughout the state of Arkansas was an important if hardly decisive factor in deciding which route developments should be undertaken.

## THE SITES

The sites of the two projected bridges, over Mill Creek and Harp Creek, were surveyed early in September, 1927.<sup>5</sup> As neither site was bridged at that time, the survey was necessary to determine the required specifications of the bridges. Both sites, set in the mountainous region of northern Arkansas, had solid rock available for the foundations of the bridges. The character of the Mill Creek site permitted the use of simple deck girder spans. In contrast, the Harp Creek site required the construction of a more substantial bridge and, consequently, a bridge with greater architectural pretensions.

## DESIGN, LETTING AND CONSTRUCTION

Designs for the projected bridge over Harp Creek were commenced on November 22, 1927, and completed on December 19.<sup>6</sup> The bridge design, for construction in reinforced concrete, was a simple deck arch with open spandrels containing vertical posts which carried the deck. An elaborate range of arch motifs adorned the surface, and though simplified in actual construction, the bridge, as built, retained the architectural character of the original designs. The bridge contract originally was intended for letting on January 15, 1928. However, the bridge contract was assigned in an apparently unscheduled letting on December 30, 1927.<sup>7</sup> The Little Rock offices of the Luten Bridge Company gained the contract for a low bid of \$8,706.12, some \$300 less than the cost estimated by the State Highway Department.<sup>8</sup>

On January 10, 1928, N.B. Garver gave notice to the Luten Bridge Company "to commence work on this project," a project which was to remain under Garver's own supervision.<sup>9</sup> Despite Garver's reminder that

**United States Department of the Interior  
National Park Service**

**National Register of Historic Places  
Continuation Sheet**

Section number 8 Page 2

---

work should be commenced" within ten days of the date of this order," that is, by January 20,<sup>10</sup> work on the bridge did not begin until January 31. However, no complications arose due to the delay and, as far as can be ascertained, the project was completed within the contract time of 110 days.<sup>11</sup>

CHIEFTAIN BOND  
60% COTTON FIBER

United States Department of the Interior  
National Park Service

National Register of Historic Places  
Continuation Sheet

Section number 8 Page 3

---

ENDNOTES

1. Notice to Bridge Contractors Job No. 904, issued by D.H. Blackwood, Chairman State Highway Commission, n.d., AHTD Microfilm Files.

2. *ibid.*

3. Murray, J.C., "State's Fine Transportation Facilities." Arkansas Centennial 1836-1936. Arkansas Democrat, 1936, p. 65.

4. W.H. Mitchell to N.B. Garver, November 30, 1927, AHTD Microfilm Files.

5. Survey Forms for Mill Creek (September 1, 1927) and Harp Creek (September 3, 1927). AHTD Microfilm Files.

6. Bridge 585. Card Index, AHTD. c.f. also "Bridge over Harp Creek" Drawing No. 512. AHTD Drawings.

7. Garver to Mitchell, December 1, 1927. AHTD Micro Film Files. Garver noted that Harp Creek and Mill Creek bridges would not be ready for December 15, 1927 letting, but that they would be completed for January 15, 1928 letting. Bridge 585 Card Index records letting on December 30, 1927.

8. Bridge 585. Card Index, AHTD. The builder's plate reads: "Harp Creek: Luten Bridge Co. Contractor Arkansas State Highway Department: 1928."

9. Garver to Luten Bridge Company, Little Rock, January 10, 1928. AHTD Microfilm Files.

10. Bridge 585. Card Index, AHTD.

11. *ibid.*

2/23/90

**United States Department of the Interior  
National Park Service**

**National Register of Historic Places  
Continuation Sheet**

Section number \_\_\_\_\_ Page \_\_\_\_\_

Historic Bridges of Arkansas MPS	Baxter County, et al.	Date Listed
COVER	<b>Substantive Review</b>	<u>4/6/90</u>
1. Cotter Bridge	<b>Substantive Review</b>	<u>4/4/90</u>
2. North Fork Bridge	Entered in the National Register	<u>4/9/90</u>
3. Beaver Bridge	<b>Substantive Review</b>	<u>4/9/90</u>
4. Mulladay Hollow Bridge	<b>Substantive Review</b>	<u>4/6/90</u>
5. Little Missouri River Bridge	<b>Substantive Review</b>	<u>4/9/90</u>
6. Cedar Creek Bridge	Entered in the National Register	<u>4/9/90</u>
7. Lee Creek Bridge (AR 220)		<u>4/9/90</u>
8. Lee Creek Bridge (AR 59)	<b>Substantive Review</b>	<u>4/6/90</u>
9. South Fork Bridge	SR <b>Substantive Review</b>	<u>4/9/90</u>
10. Eight Mile Creek Bridge	<b>Substantive Review</b>	<u>4/6/90</u>
11. Newport Bridge		<u>4/9/90</u>
12. Big Piney Creek Bridge	<del>Substantive Review</del>	<u>4/9/90</u>
13. Cache River Bridge		<u>4/9/90</u>
14. St. Louis-San Francisco Overpass	Entered in the National Register	<u>4/9/90</u>
15. Red River Bridge	<b>Substantive Review</b>	<u>4/4/90</u>
16. Buffalo River Bridge	Entered in the National Register	<u>4/9/90</u>
17. Harp Creek Bridge		<u>4/9/90</u>
18. Cypress Creek Bridge	<b>Substantive Review</b>	<u>4/9/90</u>
19. Mountain Fork Bridge	<b>Substantive Review</b>	<u>4/9/90</u>
20. White River Bridge at DeValls Bluff	Entered in the National Register	<u>4/9/90</u>
21. Edgemere Street Bridge	Entered in the National Register	<u>4/9/90</u>
22. Lake No. 1 Bridge	Entered in the National Register	<u>4/9/90</u>

UNITED STATES DEPARTMENT OF THE INTERIOR  
NATIONAL PARK SERVICE

NATIONAL REGISTER OF HISTORIC PLACES  
EVALUATION/RETURN SHEET

REQUESTED ACTION: NOMINATION

PROPERTY NAME: Harp Creek Bridge

MULTIPLE NAME: Historic Bridges of Arkansas MPS

STATE & COUNTY: ARKANSAS, Newton

DATE RECEIVED: 2/23/90 DATE OF PENDING LIST: 3/06/90  
DATE OF 16TH DAY: 3/22/90 DATE OF 45TH DAY: 4/09/90  
DATE OF WEEKLY LIST:

REFERENCE NUMBER: 90000519

NOMINATOR: STATE

REASONS FOR REVIEW:

APPEAL: N DATA PROBLEM: N LANDSCAPE: N LESS THAN 50 YEARS: N  
OTHER: N PDIL: N PERIOD: N PROGRAM UNAPPROVED: N  
REQUEST: N SAMPLE: N SLR DRAFT: N NATIONAL: N

COMMENT WAIVER: N

ACCEPT  RETURN  REJECT 4/9/90 DATE Entered in the National Register

ABSTRACT/SUMMARY COMMENTS:

RECOM./CRITERIA \_\_\_\_\_  
REVIEWER \_\_\_\_\_  
DISCIPLINE \_\_\_\_\_  
DATE \_\_\_\_\_

DOCUMENTATION see attached comments Y/N see attached SLR Y/N

CLASSIFICATION

\_\_\_count \_\_\_resource type

STATE/FEDERAL AGENCY CERTIFICATION

FUNCTION

\_\_\_historic \_\_\_current

DESCRIPTION

\_\_\_architectural classification  
\_\_\_materials  
\_\_\_descriptive text

SIGNIFICANCE

Period Areas of Significance--Check and justify below

Specific dates Builder/Architect  
Statement of Significance (in one paragraph)

\_\_\_summary paragraph  
\_\_\_completeness  
\_\_\_clarity  
\_\_\_applicable criteria  
\_\_\_justification of areas checked  
\_\_\_relating significance to the resource  
\_\_\_context  
\_\_\_relationship of integrity to significance  
\_\_\_justification of exception  
\_\_\_other

BIBLIOGRAPHY

GEOGRAPHICAL DATA

\_\_\_acreage \_\_\_verbal boundary description  
\_\_\_UTMs \_\_\_boundary justification

ACCOMPANYING DOCUMENTATION/PRESENTATION

\_\_\_sketch maps \_\_\_USGS maps \_\_\_photographs \_\_\_presentation

OTHER COMMENTS

Questions concerning this nomination may be directed to

Phone

Signed

Date



HARP CREEK BRIDGE

PRUITT VICINITY, ARKANSAS

PHOTOGRAPHER, MICHAEL SWANDA

JULY, 1988

NEGATIVE ON FILE AT AHPP

VIEW LOOKING WEST



HARP CREEK BRIDGE  
PRUITT VICINITY, ARIZONA  
PHOTOGRAPHER, MICHAEL SWANOFF  
JULY, 1988  
NEGATIVE ON FILE AT AHPP  
VIEW LOOKING WEST



HARP CREEK BRIDGE

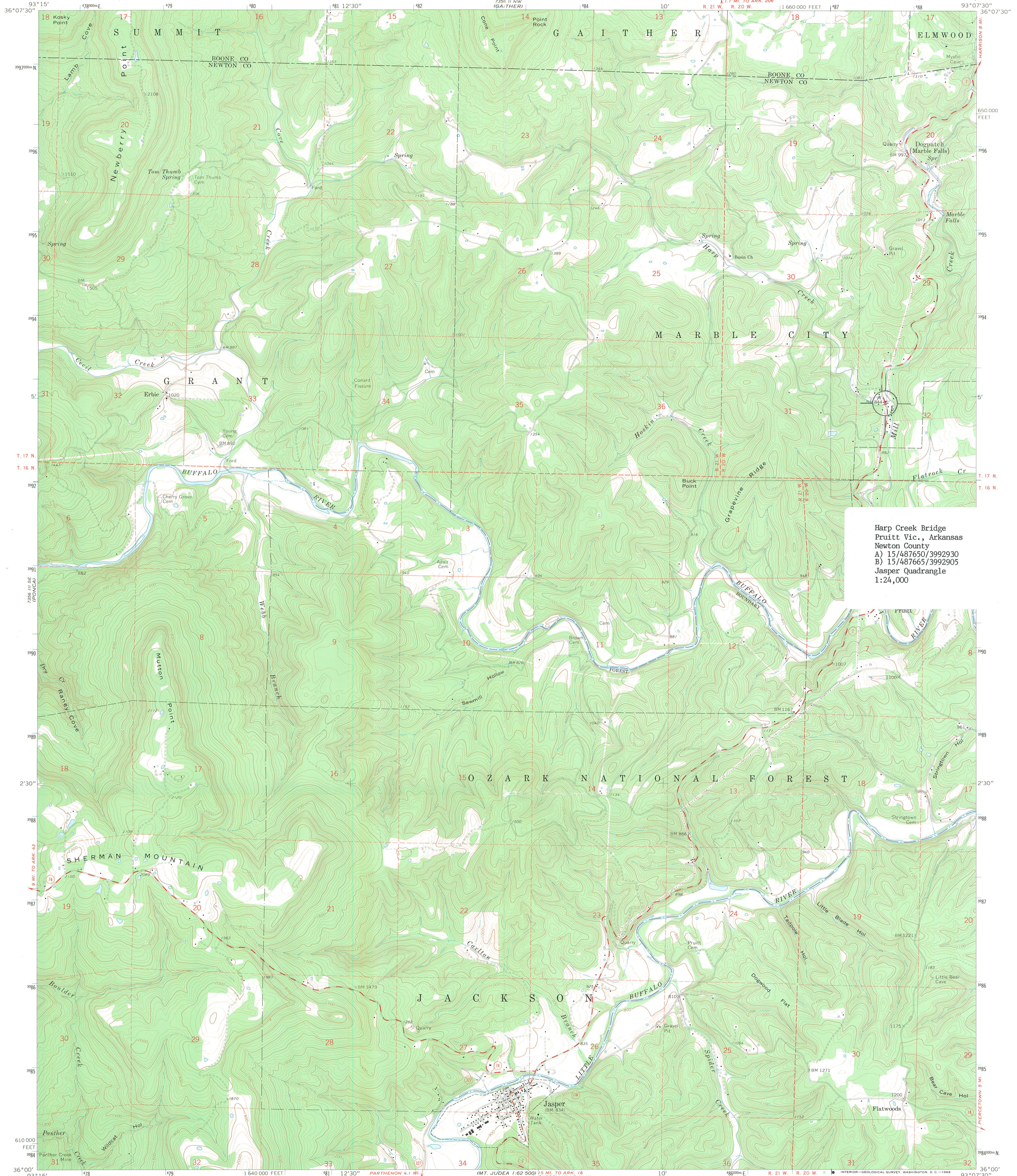
PRUITT VICINITY, ARKANSAS

PHOTOGRAPHER, MICHAEL SWANDA

JULY, 1988

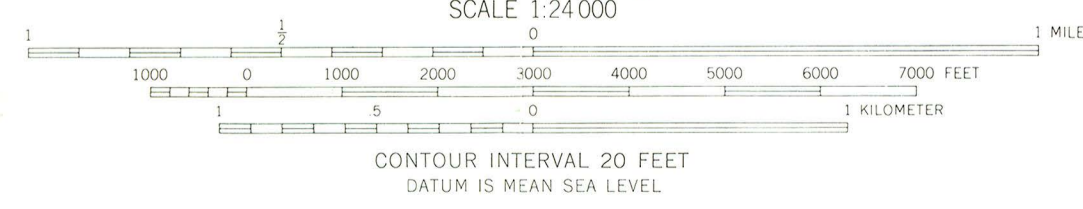
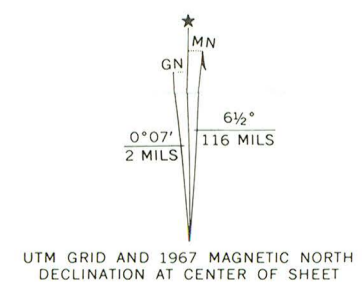
NEGATIVE ON FILE AT AHPP

VIEW LOOKING NORTHWEST



Harp Creek Bridge  
Pruitt Vic., Arkansas  
Newton County  
A) 15/487650/3992930  
B) 15/487665/3992905  
Jasper Quadrangle  
1:24,000

Mapped, edited, and published by the Geological Survey  
Control by USGS and USC&GS  
Topography by photogrammetric methods from aerial  
photographs taken 1964. Field checked 1967  
Polyconic projection. 1927 North American datum  
10,000-foot grid based on Arkansas coordinate system, north zone  
1000-meter Universal Transverse Mercator grid ticks,  
zone 15, shown in blue  
Fine red dashed lines indicate selected fence and field lines where  
generally visible on aerial photographs. This information is unchecked



ROAD CLASSIFICATION  
Medium-duty ——— Light-duty ———  
Unimproved dirt ———  
State Route ○

THIS MAP COMPLIES WITH NATIONAL MAP ACCURACY STANDARDS  
FOR SALE BY U.S. GEOLOGICAL SURVEY, DENVER, COLORADO 80225, OR WASHINGTON, D. C. 20242  
AND BY THE ARKANSAS GEOLOGICAL COMMISSION, LITTLE ROCK, ARKANSAS 72201  
A FOLDER DESCRIBING TOPOGRAPHIC MAPS AND SYMBOLS IS AVAILABLE ON REQUEST

JASPER, ARK.  
N3600—W9307.5/7.5  
1967