

United States Department of the Interior
National Park Service

OCT 13 1989

National Register of Historic Places
Registration Form

NATIONAL
REGISTER

This form is for use in nominating or requesting determinations of eligibility for individual properties or districts. See instructions in *Guidelines for Completing National Register Forms* (National Register Bulletin 16). Complete each item by marking "x" in the appropriate box or by entering the requested information. If an item does not apply to the property being documented, enter "N/A" for "not applicable." For functions, styles, materials, and areas of significance, enter only the categories and subcategories listed in the instructions. For additional space use continuation sheets (Form 10-900a). Type all entries.

1. Name of Property

historic name Gurdon Jail

other names/site number _____

2. Location

street & number Corner of West Joslyn and Front Streets

not for publication N/A

city, town Gurdon

vicinity N/A

state Arkansas

code AR

county Clark

code AR 019

zip code 71743

3. Classification

Ownership of Property

- private
- public-local
- public-State
- public-Federal

Category of Property

- building(s)
- district
- site
- structure
- object

Number of Resources within Property

Contributing	Noncontributing
<u>1</u>	_____ buildings
_____	_____ sites
_____	_____ structures
_____	_____ objects
<u>1</u>	_____ Total

Name of related multiple property listing:

N/A

Number of contributing resources previously

listed in the National Register N/A

4. State/Federal Agency Certification

As the designated authority under the National Historic Preservation Act of 1966, as amended, I hereby certify that this nomination request for determination of eligibility meets the documentation standards for registering properties in the National Register of Historic Places and meets the procedural and professional requirements set forth in 36 CFR Part 60. In my opinion, the property meets does not meet the National Register criteria. See continuation sheet.

Signature of certifying official

Date

Cathryn A. Byrd
Arkansas Historic Preservation Program

10-9-89

State or Federal agency and bureau

In my opinion, the property meets does not meet the National Register criteria. See continuation sheet.

Signature of commenting or other official

Date

State or Federal agency and bureau

5. National Park Service Certification

I, hereby, certify that this property is:

- entered in the National Register. See continuation sheet.
- determined eligible for the National Register. See continuation sheet.
- determined not eligible for the National Register.

removed from the National Register.

other, (explain:) _____

Entered in the
National Register 11/13/89

Alvoret Byrd

Signature of the Keeper

Date of Action

6. Function or Use

Historic Functions (enter categories from instructions)

Government/Correctional Facility

Current Functions (enter categories from instructions)

Vacant/Not in Use

7. Description

Architectural Classification

(enter categories from instructions)

No Style

Materials (enter categories from instructions)

foundation Brick

walls Brick

roof Metal/Tin

other _____

Describe present and historic physical appearance.

Category of Property	Number of Properties with Category	Number of Contributing Resources in Category
Buildings	_____	_____
Structures	_____	_____
Objects	_____	_____
Total	_____	_____

Number of contributing resources in category listed in the National Register: _____

Number of properties in category listed in the National Register: _____

Number of properties in category listed in the National Register: _____

Number of properties in category listed in the National Register: _____

Number of properties in category listed in the National Register: _____

Number of properties in category listed in the National Register: _____

Number of properties in category listed in the National Register: _____

Number of properties in category listed in the National Register: _____

Number of properties in category listed in the National Register: _____

Number of properties in category listed in the National Register: _____

Entered in the
National Register

See continuation sheet

United States Department of the Interior
National Park Service

National Register of Historic Places
Continuation Sheet

Section number 7 Page 1

Summary. The Gurdon Jail was designed and constructed in 1907 by Mr. M.D. Lowe, the co-owner of the Gurdon Brick Company. It is a single story, gable roof red brick masonry structure and features a simple, rectangular plan.

Elaboration. The Gurdon Jail was built in 1907 as a replacement for an earlier jail of similar plan which Sanborn Maps indicate existed on this site as of 1897, if not earlier. The jail was designed by M.D. Lowe, the co-owner of the local Gurdon Brick Company. It is a simple red brick masonry structure, of a single story in height, and laid out in a rectangular plan divided into two cells. It is covered with a metal gable roof.

The eastern and western elevations are blank except for a small, central horizontal window, faced with simple trim boards and filled with perforated metal screens instead of bars. The northern elevation is relieved by two of these windows, distributed one per cell. The southern or front elevation features two entries. The western, wood door entry is the earlier of the two, dating from the building's construction when it contained but one cell. The metal door to the east was added later, when a partition was installed and the second cell created. The interior has been renovated recently, though it retains its strip tongue-in-groove wood ceiling and early if not original toilet fixtures.

The only significant alterations to the structure are the concrete floor, which was added to keep out standing water, and the metal roof, which duplicates the form of the original roof.

The Gurdon Jail is the only jail building surviving in Gurdon.

8. Statement of Significance

Certifying official has considered the significance of this property in relation to other properties:

nationally statewide locally

Applicable National Register Criteria A B C D

Criteria Considerations (Exceptions) A B C D E F G

Areas of Significance (enter categories from instructions)

Law
Exploration/Settlement
Social History

Period of Significance

1907

Significant Dates

1907

Cultural Affiliation

N/A

Significant Person

N/A

Architect/Builder

Lowe, M.D.

State significance of property, and justify criteria, criteria considerations, and areas and periods of significance noted above.

See continuation sheet

9. Major Bibliographical References

The Goodspeed Biographical and Historical Memoirs of Southern Arkansas, (1890).
Sanborn Fire Insurance Maps, Gurdon, Arkansas.
Tarpley, Helen and Zela Taylor, Gurdon Centennial Album, (1890).
Thomas, David y., ed., Arkansas and Its People, (New York, 1930).
The WPA Guide to 1930's Arkansas, (orig. pub. 1941; republished 1987).

See continuation sheet

Previous documentation on file (NPS):

- preliminary determination of individual listing (36 CFR 67) has been requested
- previously listed in the National Register
- previously determined eligible by the National Register
- designated a National Historic Landmark
- recorded by Historic American Buildings Survey # _____
- recorded by Historic American Engineering Record # _____

Primary location of additional data:

- State historic preservation office
- Other State agency
- Federal agency
- Local government
- University
- Other

Specify repository: _____

10. Geographical Data

Acreage of property Less than one

UTM References

A

1	5
---	---

4	8	5	7	8	0
---	---	---	---	---	---

3	7	5	3	0	8	0
---	---	---	---	---	---	---

Zone Easting Northing

B

--	--	--	--	--	--

--	--	--	--	--	--

--	--	--	--	--	--

Zone Easting Northing

C

--	--	--	--	--	--

--	--	--	--	--	--

--	--	--	--	--	--

See continuation sheet

Verbal Boundary Description

Lot 1, Block 1, Railroad Addition to the Town of Gurdon

See continuation sheet

Boundary Justification

This boundary includes all the program historically associated with this resource.

See continuation sheet

11. Form Prepared By

name/title Kenneth Story, Architectural Historian/Melissa Calley, Historian

organization Arkansas Historic Preservation Program date October 9, 1989

street & number 225 E. Markham, Suite 200 telephone (501) 371-2763

city or town Little Rock state Arkansas zip code 72201

United States Department of the Interior
National Park Service

National Register of Historic Places
Continuation Sheet

Section number 8 Page 1

Summary. The Gurdon Jail is being nominated under Criterion A with local significance for its association with the early social and civic development of Gurdon, a thriving southern Arkansas lumber town during the late nineteenth and early twentieth centuries.

Elaboration. The Gurdon Jail is being nominated under Criterion A with local significance for its associations with the early social and civic development of Gurdon, a town which was sited and which grew because of its location at the intersections of several important lumbering railroads and because of its own proximity to large stands of virgin timber.

The construction of the railroads played an instrumental part in the birth and growth of a lumbering industry in what had earlier been unreachable stands of timber, and hence in the growth of Gurdon also. The community now known as Gurdon started as a construction camp on the Iron Mountain Railway, completed in 1873. Soon thereafter the Iron Mountain Railway constructed a branch to Camden leaving the main line from Gurdon, which only increased the activity and regional centrality of the town; and by 1906 the Gurdon-Fort Smith railroad connected Gurdon with the virgin forests of Montgomery County and the lumbering operations which were cutting throughout the Ouachita Forest.

This coincidental accessibility via modern transportation and rapid expansion of surrounding lumbering operations made Gurdon particularly attractive as a mill site and so allowed it to participate in the rapid expansion of the lumbering industry in the South which saw it take over the lead from the Great Lakes region in lumber production by 1899. The forests around Gurdon, and especially to the northwest, contained huge stands of yellow pine, a species particularly well-suited to a rapidly growing and building nation. A large segment of Clark County participated to some degree in the local expansion brought on by the lumbering industry, but Gurdon by far took the lead: in 1888, the mills in Gurdon (and especially the Gurdon Lumber Company) exceeded the number of shipments of cut lumber shipped by the other milling towns in Clark County combined (4,178 carloads vs. the combined total of 3,346 carloads from Arkadelphia, Smithton, Bierne, Whelen and Curtis).

This industrial development naturally led to the commercial growth of the town as well. By 1888 Gurdon could boast of a population of approximately one thousand, most of which were employed at the mills. Gurdon supported six general stores, groceries, meat markets, barber shops, mechanics' shops, two hotels, a livery stable, a weekly newspaper, post office, churches, etc. Four physicians also found sufficient work to remain. By the turn of the century Gurdon's other industries included cotton gins, a brick company, and an ice plant which supplied the Missouri-Pacific railroad as Gurdon was a re-icing stop; it also claimed a bank and several other "similar conveniences."

**United States Department of the Interior
National Park Service**

**National Register of Historic Places
Continuation Sheet**

Section number 8 Page 2

With all this activity and rapid growth it is not surprising that a need for a a jail would also arise. Arkadelphia, seventeen miles to the northeast, had a large jail, and major offenders and outsiders were sent here from Gurdon also. Typically local offenders only would be incarcerated in the Gurdon Jail, which renders it of even greater local importance. Local tradition has it constructed by 1907, but it may have been built as early as 1897, given the appearance on the Sanborn map of that year of a structure of identical plan in this location called a 'lock-up'. Its simplicity of design belies its significance as one of the few intact surviving structures from this 'boom' era in Gurdon's history, and the only jail.

UNITED STATES DEPARTMENT OF THE INTERIOR
NATIONAL PARK SERVICE

NATIONAL REGISTER OF HISTORIC PLACES
EVALUATION/RETURN SHEET

REQUESTED ACTION: NOMINATION

PROPERTY NAME: Gurdon Jail

MULTIPLE NAME:

STATE & COUNTY: ARKANSAS, Clark

DATE RECEIVED: 10/13/89 DATE OF PENDING LIST: 10/25/89
DATE OF 16TH DAY: 11/10/89 DATE OF 45TH DAY: 11/27/89
DATE OF WEEKLY LIST:

REFERENCE NUMBER: 89001959

NOMINATOR: STATE

REASONS FOR REVIEW:

APPEAL: N DATA PROBLEM: N LANDSCAPE: N LESS THAN 50 YEARS: N
OTHER: N PDIL: N PERIOD: N PROGRAM UNAPPROVED: N
REQUEST: N SAMPLE: N SLR DRAFT: N NATIONAL: N

COMMENT WAIVER: N

ACCEPT RETURN REJECT 11/13/89 DATE

Entered in the
National Register

ABSTRACT/SUMMARY COMMENTS:

RECOM./CRITERIA _____
REVIEWER _____
DISCIPLINE _____
DATE _____

DOCUMENTATION see attached comments Y/N see attached SLR Y/N

CLASSIFICATION

___ count ___ resource type

STATE/FEDERAL AGENCY CERTIFICATION

FUNCTION

___ historic ___ current

DESCRIPTION

___ architectural classification
___ materials
___ descriptive text

SIGNIFICANCE

Period Areas of Significance--Check and justify below

Specific dates Builder/Architect
Statement of Significance (in one paragraph)

___ summary paragraph
___ completeness
___ clarity
___ applicable criteria
___ justification of areas checked
___ relating significance to the resource
___ context
___ relationship of integrity to significance
___ justification of exception
___ other

BIBLIOGRAPHY

GEOGRAPHICAL DATA

___ acreage ___ verbal boundary description
___ UTMS ___ boundary justification

ACCOMPANYING DOCUMENTATION/PRESENTATION

___ sketch maps ___ USGS maps ___ photographs ___ presentation

OTHER COMMENTS

Questions concerning this nomination may be directed to

_____ Phone _____

Signed _____ Date _____



**GURDON
CALABOOSE**
BUILT 1908
RESTORED 1985

GURDON JAIL Clark Co

GURDON, ARKANSAS

PHOTOGRAPHED BY M. CALLEY

MAY, 1989

NEGATIVES ON FILE AT AHPP

VIEW FROM SOUTHWEST



GURDON JAIL

Clark County

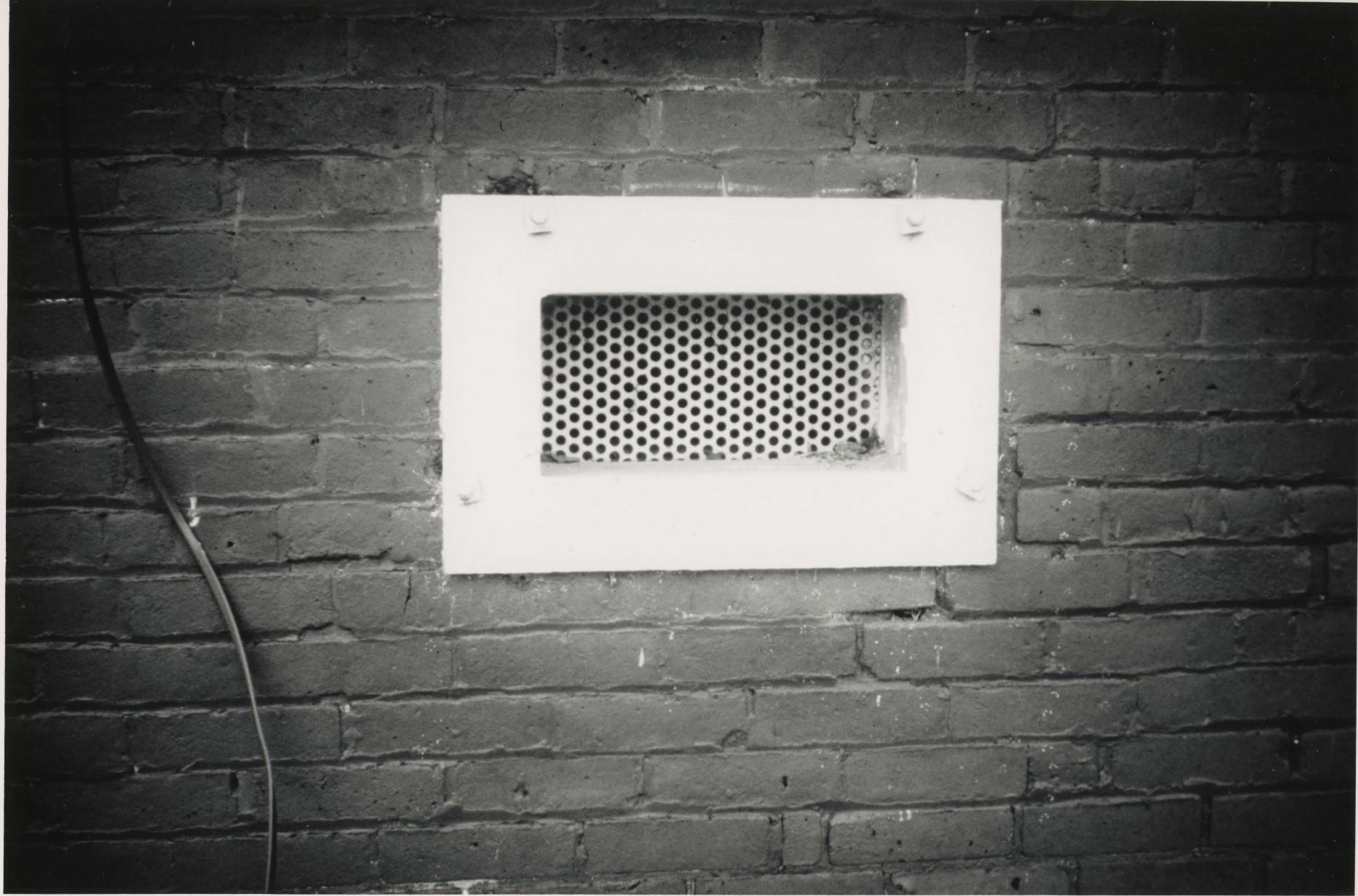
GURDON, ARKANSAS

PHOTOGRAPHED BY M. CALLEY

MAY, 1989

NEGATIVES ON FILE AT AHPP

VIEW FROM NORTHEAST



GURDON JAIL Clark County

GURDON, ARKANSAS

PHOTOGRAPHED BY M. CALLEY

MAY, 1989

NEGATIVES ON FILE AT AHPP

WINDOW (SCREEN) DETAIL



GURDON JAIL

Clark County

GURDON, ARKANSAS

PHOTOGRAPHED BY M. CALLEY

MAY, 1989

NEGATIVES ON FILE AT AHPP

VIEW FROM NORTH



GURDON JAIL Clark County

GURDON, ARKANSAS

PHOTOGRAPHED BY M. CALLEY

MAY, 1989

NEGATIVES ON FILE AT AHPP

LATER DOOR DETAIL



GURDON JAIL Clark County

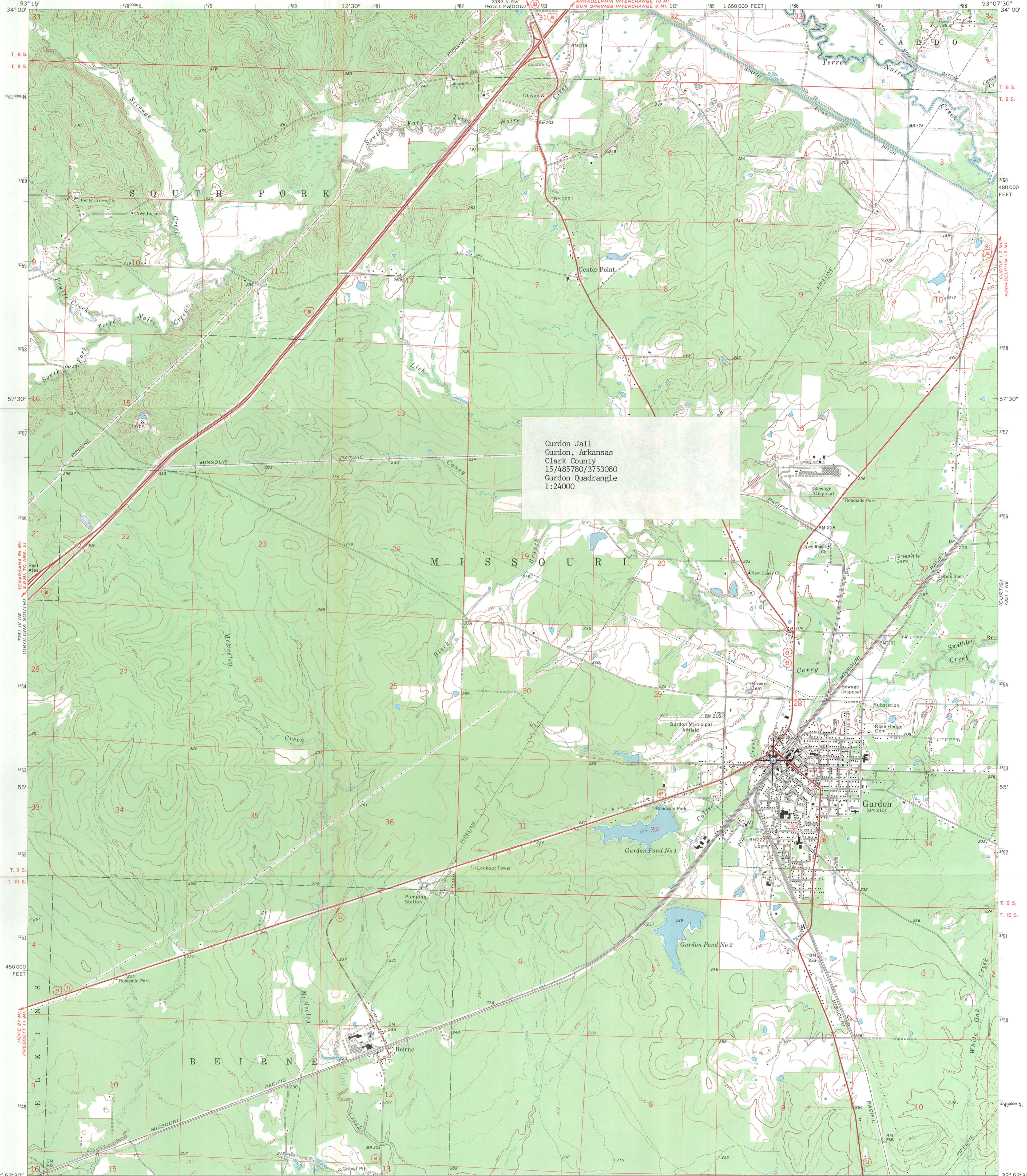
GURDON, ARKANSAS

PHOTOGRAPHED BY M. CALLEY

MAY, 1989

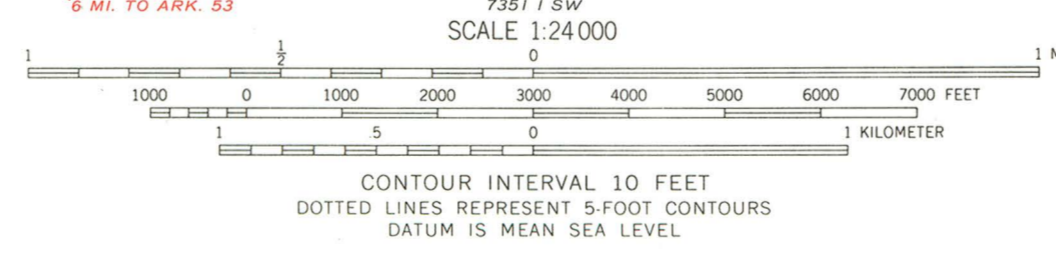
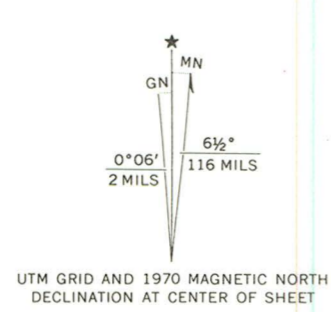
NEGATIVES ON FILE AT AHPP

DOOR DETAIL



Gurdon Jail
Gurdon, Arkansas
Clark County
15/485780/3753080
Gurdon Quadrangle
1:24000

Mapped, edited, and published by the Geological Survey
Control by USGS and USC&GS
Topography by photogrammetric methods from aerial
photographs taken 1968. Field checked 1970
Polyconic projection. 1927 North American datum
10,000-foot grid based on Arkansas coordinate system, south zone
1000-meter Universal Transverse Mercator grid ticks,
zone 15, shown in blue
Fine red dashed lines indicate selected fence and field lines where
generally visible on aerial photographs. This information is unchecked



ROAD CLASSIFICATION

Primary highway, all weather, hard surface	Light-duty road, all weather, improved surface
Secondary highway, all weather, hard surface	Unimproved road, fair or dry weather

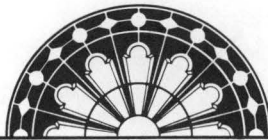
○ Interstate Route □ U. S. Route ○ State Route

THIS MAP COMPLIES WITH NATIONAL MAP ACCURACY STANDARDS
FOR SALE BY U. S. GEOLOGICAL SURVEY, DENVER, COLORADO 80225, OR WASHINGTON, D. C. 20242
AND BY THE ARKANSAS GEOLOGICAL COMMISSION, LITTLE ROCK, ARKANSAS 72201
A FOLDER DESCRIBING TOPOGRAPHIC MAPS AND SYMBOLS IS AVAILABLE ON REQUEST

GURDON, ARK.
N3352.5-W9307.5/7.5

1970

AMS 7351 1 NW—SERIES W844



ARKANSAS
HISTORIC
PRESERVATION
PROGRAM

October 10, 1989

OCT 13 1989

NATIONAL
REGISTER

Carol D. Shull
Chief of Registration
United States Department of the Interior
National Register of Historic Places
National Park Service
1100 "L" Street, N.W.
Washington, D.C. 20240

RE: Gurdon Jail
Gurdon - Clark County, Arkansas

Dear Carol:

We are enclosing for your review the nomination for the Gurdon Jail. The Arkansas Historic Preservation Program has complied with all applicable nominating procedures and notification requirements in the nomination process.

Thank you for your consideration in this matter.

Sincerely,

Cathy Buford
State Historic Preservation Officer

CB/KS/lss

Enclosures

