

United States Department of the Interior
National Park Service

National Register of Historic Places
Registration Form



This form is for use in nominating or requesting determinations for individual properties and districts. See instructions in *How to Complete the National Register of Historic Places Registration Form* (National Register Bulletin 16A). Complete each item by marking "x" in the appropriate box or by entering the information requested. If an item does not apply to the property being documented, enter "N/A" for "not applicable." For functions, architectural classification, materials, and areas of significance, enter only categories and subcategories from the instructions. Place additional entries and narrative items on continuation sheets (NPS Form 10-900a). Use a typewriter, word processor, or computer, to complete all items.

1. Name of Property

historic name Crooked Creek Bridge

other names/site number Site #MR0055

2. Location

street & number U.S. 62 Spur North over Crooked Creek not for publication

city or town Pyatt vicinity

state Arkansas code AR county Marion code 089 zip code 72687

3. State/Federal Agency Certification

As the designated authority under the National Historic Preservation Act, as amended, I hereby certify that this nomination request for determination of eligibility meets the documentation standards for registering properties in the National Register of Historic Places and meets the procedural and professional requirements set for in 36 CFR Part 60. In my opinion, the property meets does not meet the National Register criteria. I recommend that this property be considered significant nationally statewide locally. (See continuation sheet for additional comments.)

Catherine Matthews

10/30/09

Signature of certifying official/Title

Date

Arkansas Historic Preservation Program

State or Federal agency and bureau

In my opinion, the property meets does not meet the National Register criteria. (See Continuation sheet for additional comments.)

Signature of certifying official/Title

Date

State or Federal agency and bureau

4. National Park Service Certification

I hereby certify that the property is:

entered in the National Register.

See continuation sheet

determined eligible for the National Register.

See continuation sheet

determined not eligible for the National Register.

removed from the National Register.

other, (explain:)

love
Signature of the Keeper

Edson W. Beall

Date of Action

1.21.10

Crooked Creek Bridge
Name of Property

Marion County, Arkansas
County and State

5. Classification

Ownership of Property
(Check as many boxes as apply)

Category of Property
(Check only one box)

Number of Resources within Property
(Do not include previously listed resources in count.)

- private
- public-local
- public-State
- public-Federal

- building(s)
- district
- site
- structure
- object

Contributing	Noncontributing	
--------------	-----------------	--

	buildings
	sites
1	structures
	objects
1	Total

Name of related multiple property listing
(Enter "N/A" if property is not part of a multiple property listing.)

Historic Bridges of Arkansas

**Number of Contributing resources previously listed
in the National Register**

6. Function or Use

Historic Functions
(Enter categories from instructions)

TRANSPORTATION/road-related (vehicular)/bridge

Current Functions
(Enter categories from instructions)

TRANSPORTATION/road-related (vehicular)/bridge

7. Description

Architectural Classification
(Enter categories from instructions)

OTHER/Concrete arch

Materials
(Enter categories from instructions)

foundation CONCRETE

walls N/A

roof N/A

other CONCRETE

Narrative Description

(Describe the historic and current condition of the property on one or more continuation sheets.)

United States Department of the Interior
National Park Service

National Register of Historic Places Continuation Sheet

Name of Property Crooked Creek Bridge

County and State Marion County, AR

Name of multiple property listing (if applicable)
Historic Bridges of Arkansas

Section number 7 Page 1

Summary

The Crooked Creek Bridge is on a spur of US 62, connecting Pyatt, Arkansas, to US 62/412, the main east/west route across northern Arkansas. The bridge crosses Crooked Creek approximately ½ mile north of US 412. Three closed-spandrel arches span a total length of 291 feet, the longest span measuring 84.9 feet.

Elaboration

Arch structures have been commonly used in bridge construction for many centuries. The development of reinforced concrete in the early twentieth century in France gained popularity and more common use in construction, replacing cut stone in arched structures. In the United States, reinforced concrete structures gained popularity during the 1920s in bridge construction, commonly used in Arkansas's highway bridge construction in this period.

Engineer Daniel B. Luten is credited with the structural advancements that made this type of closed-spandrel concrete bridge so prevalent, developing several patents for structural methods and designing over 6,000 bridges in the States and abroad. The rapid development of concrete technology and structural reinforcement made bridge engineering quick and more economical. The Crooked Creek Bridge is a close cousin of the many bridges designed by Luten in the state.

The Crooked Creek Bridge is part of US 62 Spur, which passes through northern Arkansas into Missouri. This spur road is the primary connection from Pyatt back to US 62/412, which connects Pyatt to the larger towns of Yellville (the county seat) to the east, and Harrison (the largest city in the area) to the west.

The bridge is accessed from both the north and south. The Crooked Creek Bridge consists of three closed-spandrel arch spans with the longest measuring 84.9 feet long; the bridge has a total length of 291 feet. The travel surface is asphalt. The abutments are also concrete. Resting on top of the deck, a pair of guardrails comprised of solid concrete decorated with incised rectangles run the entire length of the bridge on the west and east sides.

United States Department of the Interior
National Park Service

National Register of Historic Places Continuation Sheet

Name of Property **Crooked Creek Bridge**

County and State **Marion County, AR**

Name of multiple property listing (if applicable)
Historic Bridges of Arkansas

Section number **7** Page **2**

Integrity

The Crooked Creek Bridge continues to serve traffic along US 62 spur heading towards Pyatt, AR. The bridge's key design features remain intact, although the road surface has been paved since its original dirt and gravel surfacing at the time of construction. The setting of the bridge, in a rural area on the edge of the small town of Pyatt, also reflects its historic setting.

8. Statement of Significance

Applicable National Register Criteria

(Mark "x" in one or more boxes for the criteria qualifying the property for National Register listing.)

- A** Property is associated with events that have made a significant contribution to the broad patterns of our history.
- B** Property is associated with the lives of persons significant in our past.
- C** Property embodies the distinctive characteristics of a type, period, or method of construction or represents the work of a master, or possesses high artistic values, or represents a significant and distinguishable entity whose components lack individual distinction.
- D** Property has yielded, or is likely to yield, information important in prehistory or history.

Criteria Considerations

(Mark "x" in all the boxes that apply.)

Property is:

- A** owned by a religious institution or used for religious purposes.
- B.** removed from its original location.
- C.** birthplace or grave of a historical figure of outstanding importance.
- D** a cemetery.
- E** a reconstructed building, object, or structure.
- F** a commemorative property
- G** less than 50 years of age or achieved significance within the past 50 years.

Levels of Significance (local, state, national)

Local

Areas of Significance (Enter categories from instructions)

TRANSPORTATION
ENGINEERING

Period of Significance

1923-1960

Significant Dates

1923

Significant Person (Complete if Criterion B is marked)

Cultural Affiliation (Complete if Criterion D is marked)

Architect/Builder

M.C. Orr Contracting Co., Builder

Narrative Statement of Significance

(Explain the significance of the property on one or more continuation sheets.)

9. Major Bibliographical References

Bibliography

(Cite the books, articles, and other sources used in preparing this form on one or more continuation sheets.)

Previous documentation on file (NPS):

- preliminary determination of individual listing (36 CFR 67) has been requested
- previously listed in the National Register
- Previously determined eligible by the National Register
- designated a National Historic Landmark
- recorded by Historic American Buildings Survey # _____
- recorded by Historic American Engineering Record # _____

Primary location of additional data:

- State Historic Preservation Office
- Other State Agency
- Federal Agency
- Local Government
- University
- Other

Name of repository:

Arkansas Highway and Transportation Department

United States Department of the Interior
National Park Service

National Register of Historic Places Continuation Sheet

Name of Property Crooked Creek Bridge

County and State Marion County, AR

Name of multiple property listing (if applicable)
Historic Bridges of Arkansas

Section number 8 Page 1

Summary

The Crooked Creek Bridge is being nominated to the National Register of Historic Places under **Criterion A** with local significance for its association with the development of early automobile infrastructure in the 1920s. Constructed in 1923, the bridge is representative of the bridge projects from the period, which were rapidly developing better accessibility for automobiles throughout Arkansas. The bridge is still the primary crossing of Crooked Creek near Pyatt, Arkansas, serving traffic in and out of Pyatt's town center.

The Crooked Creek Bridge is also being nominated under **Criterion C** with local significance as a good example of closed-spandrel, reinforced concrete bridge design, a construction method typical of Arkansas state highway projects from this period. The increased arched spans, more narrow members, and decorative detailing represented the great development in concrete bridge technology occurring at this time.

The Crooked Creek Bridge on US 62 spur is also being submitted under the multiple property listing "Historic Bridges of Arkansas" and under the associated historic context "Arkansas Highway and Transportation Era."

Elaboration

Crooked Creek, as its name suggests, is a waterway characterized by multiple bends, running approximately 52 miles across Boone and Marion counties. Starting just south of Harrison, Arkansas, the creek continues through the communities of Harmon, Pyatt, Summit and Yellville before its confluence with the White River. Today, the creek is a popular waterway for bass fishing and canoeing.

The community of Pyatt has a close relationship to Crooked Creek. Early Native American residents were overrun by the community of Stringtown, which spread along the many bends of the creek. Around 1870, the town was renamed Powell, after then

United States Department of the Interior
National Park Service

National Register of Historic Places Continuation Sheet

Name of Property Crooked Creek Bridge

County and State Marion County, AR

Name of multiple property listing (if applicable)
Historic Bridges of Arkansas

Section number **8**

Page **2**

governor Powell Clayton. Powell, Arkansas, was home to one general store, a blacksmith shop, and a public school for white children.¹

The major boost to this community would come in the early twentieth century, when the St. Louis, Iron Mountain, & Southern Railroad Company extended lines through this area. Around this time, the township was officially platted and renamed Pyatt, after a railroad manager by that name. The new town site was dedicated in September 1904. Land was given by A.J. Bradford, Virgie Foster, Arkie Hobson, Millie Keene, and Mary L. Bradford, a large part of the territory having been farmed in cotton. With the railroad, industry grew in Pyatt. The town soon had a cotton gin, gristmill, general store, and post office. Lumber was the primary resource shipped from Pyatt, although produce and dairy from local farms was also shipped from the Pyatt depot. Passengers rode the renamed Missouri-Pacific rail line through this area from 1907 until 1960.²

Crooked Creek Bridge is part of US 62 spur, connecting the town of Pyatt, a community of less than three-hundred, to the main highway running through Marion County, and acting as the community's lifeline to the outside world. At the time of its construction, the bridge was paved with dirt and gravel, as were the rest of the state highways in this county.³ Road improvements were ongoing following the reorganization of the Arkansas State Highway Commission in 1923, the same year as the bridge's construction. It was not until this time that the highway commission formalized a state-wide highway system, previously relying heavily on individual counties to develop their own projects.⁴

By 1920, projects of the Arkansas State Highway Commission were largely transitioning from construction efforts to maintenance, as the state had undertaken significant construction efforts in the 1910s to connect Arkansas's towns and cities.⁵ Marion

¹ Young, June Turney. A History of Pyatt <http://www.ozarkhistory.com/pyatthist.htm>.

² Ibid.

³ Arkansas State Highways Map published in 1924. Arkansas Highway and Transportation Department.

⁴ Arkansas State Highway and Transportation Department. *Historical Review*. AHTD, November 1992.

⁵ Arkansas Highway Commission, *Seventh Biennial Report of the Department of State Lands, Highways and Improvements*. Conway Printing Co, Conway, AR, 1926. p 78.

United States Department of the Interior
National Park Service

National Register of Historic Places Continuation Sheet

Name of Property Crooked Creek Bridge

County and State Marion County, AR

Name of multiple property listing (if applicable)

Historic Bridges of Arkansas

Section number **8**

Page **3**

County, however, remained relatively underdeveloped – only 63 miles of state roads were built in the county, none being designated as “primary” routes.⁶ The rapid expansion of automobile travel in the country was just beginning in Marion County – of the 378 automobiles registered in the County, almost half of them were newly registered in 1921 and 1922.⁷ While other more populated counties were transitioning towards spending their highway budgets primarily on maintenance, Marion County’s expenditures were still largely dominated by new construction.⁸ Construction at this time was funded largely through federal allotments and state bonds issued county by county. Between 1921 and 1926, one federal allotment was given to Marion County for \$8,500, and it is possible that it helped fund the Crooked Creek Bridge into Pyatt.⁹

The Crooked Creek Bridge is typical of many concrete bridges constructed during this period. The use of concrete was becoming popular in the creation of Roman-inspired closed spandrel arch bridges, creating picturesque crossings in the landscape. This romantic ideal was popularized after the Columbian Exhibition of 1893 in Chicago, which initiated the spread of the City-Beautiful Movement. The Exhibition’s architecture was characterized by large-scaled classical cityscapes and picturesque landscape design by Daniel Burnham and Frederick Law Olmsted. Burnham’s maxim to “make no small plans” transformed many American cities, which adopted the Roman-classical styling and broad dramatic spaces of the exposition grounds, reshaping their downtowns and promoting the resurgence of American neoclassicism in the early twentieth century.¹⁰

Constructed in 1923 by the M.K. Orr Contracting Company of Harrison, Arkansas, the bridge has three closed spandrel concrete arches and a decorative balustrade of simple rectangular panels. Although the bridge type was popular in the 1920s, this is the only example in Marion County. Now paved, the road surface, like most roads in the county

⁶ *Seventh Biennial Report*, p. 29.

⁷ Arkansas Highway Commission, *Fifth Biennial Report of the Department of State Lands, Highways and Improvements*. H.G. Pugh & Co. Publishing, Little Rock, AR, 1922. p 113.

⁸ *Seventh Biennial Report*, p 88.

⁹ Fifth Biennial Report, p. 42; Seventh Biennial Report, p. 48.

¹⁰ City-Beautiful reference- Wilson, *The City Beautiful Movement*/ Peterson- *The Birth of American City Planning*.

United States Department of the Interior
National Park Service

National Register of Historic Places Continuation Sheet

Name of Property Crooked Creek Bridge

County and State Marion County, AR

Name of multiple property listing (if applicable)
Historic Bridges of Arkansas

Section number **8**

Page **4**

at that time, was originally gravel.¹¹ Although standard pre-engineered metal truss plans were available to counties for construction of state highways, concrete arch bridges were frequently used throughout the state.¹² This bridge closely resembles, but is not attributed to, the designs of Daniel B. Luten, a prominent bridge engineer accredited with many concrete designs throughout the state. Luten's bridges developed ideas from earlier concrete engineers to establish standard calculations for construction to streamline the design process. His system of reinforcing allowed bridges to span longer distances and use less concrete, economizing construction with these materials.¹³

Today, US 62 spur remains an important road for the residents of Pyatt, and the Crooked Creek Bridge has been an important crossing on the road for the residents in the area for over 85 years. The Crooked Creek Bridge remains an important transportation link in the area and a good example of a closed-spandrel concrete arch bridge.

Statement of Significance

The Crooked Creek Bridge is being nominated to the National Register of Historic Places under **Criterion A** with local significance for its association with the development of early automobile infrastructure in the 1920s. Constructed in 1923, the bridge is representative of the bridge projects from the period, which were rapidly developing better accessibility for automobiles throughout Arkansas. The bridge is still the primary crossing of Crooked Creek near Pyatt, Arkansas, serving traffic in and out of Pyatt's town center.

The Crooked Creek Bridge is also being nominated under **Criterion C** with local significance as a good example of closed-spandrel, reinforced concrete bridge design, a construction method typical of Arkansas state highway projects from this period. The increased arched spans, more narrow members, and decorative detailing represented the great development in concrete bridge technology occurring at this time.

¹¹ *Fifth Biennial Report*, p 61.

¹² *Fifth Biennial Report*, p 52.

¹³ James L. Cooper, *Artistry and Ingenuity in Artificial Stone: Indiana's Concrete Bridges 1900-1942* (Greencastle, IN: privately printed, 1997).

**United States Department of the Interior
National Park Service**

National Register of Historic Places Continuation Sheet

Name of Property Crooked Creek Bridge

County and State Marion County, AR

Name of multiple property listing (if applicable)

Historic Bridges of Arkansas

Section number **8**

Page **5**

The Crooked Creek Bridge on US 62 spur is also being submitted under the multiple property listing "Historic Bridges of Arkansas" and under the associated historic context "Arkansas Highway and Transportation Era."

United States Department of the Interior
National Park Service

National Register of Historic Places Continuation Sheet

Name of Property Crooked Creek Bridge

County and State Marion County, AR

Name of multiple property listing (if
applicable)
Historic Bridges of Arkansas

Section number 9 Page 1

Bibliography

Arkansas Highway Commission, *Fifth Biennial Report of the Department of State Lands, Highways and Improvements*. H.G. Pugh & Co. Publishing, Little Rock, AR, 1922. p 113.

Arkansas Highway Commission, *Seventh Biennial Report of the Department of State Lands, Highways and Improvements*. Conway Printing Co, Conway, AR, 1926. p 78.

Arkansas State Highways Map published in 1924. Arkansas Highway and Transportation Department.

Arkansas State Highway and Transportation Department. *Historical Review*. AHTD, November 1992.

Cooper, James L. *Artistry and Ingenuity in Artificial Stone: Indiana's Concrete Bridges 1900-1942*. Greencastle, IN: privately printed, 1970.

Peterson, *The Birth of City Planning in the United States, 1840-1917*. Baltimore: Johns Hopkins Press, 2003.

Wilson, William H. *The City Beautiful Movement*. Baltimore: Johns Hopkins Press, 1989.

Young, June Turney. A History of Pyatt, from *A History of Marion County*, edited by Early Berry, 1997. <http://www.ozarkhistory.com/pyatthist.htm>

United States Department of the Interior
National Park Service

National Register of Historic Places Continuation Sheet

Name of Property Crooked Creek Bridge

County and State Marion County, AR

Name of multiple property listing (if applicable)
Historic Bridges of Arkansas

Section number **10** Page **1**

Verbal Boundary Description

From a point 20 feet south of the south end of the bridge, proceed northerly along US 62 spur to a point 20 feet north of the north end of the bridge. The width of the boundary includes 20 feet on either side of the road centerline.

Boundary Justification

This boundary includes the Crooked Creek Bridge and its immediate setting.

Crooked Creek Bridge
Name of Property

Marion County, Arkansas
County and State

10. Geographical Data

Acreage of Property Less than one

UTM References

(Place additional UTM references on a continuation sheet.)

1	<u>15</u>	<u>514040</u>	<u>4011300</u>	3	<u> </u>	<u> </u>	<u> </u>
	Zone	Easting	Northing		Zone	Easting	Northing
2	<u> </u>	<u> </u>	<u> </u>	4	<u> </u>	<u> </u>	<u> </u>

See continuation sheet

Verbal Boundary Description

(Describe the boundaries of the property on a continuation sheet.)

Boundary Justification

(Explain why the boundaries were selected on a continuation sheet.)

11. Form Prepared By

name/title Brian Poepsel, National Register Intern, Edited by Ralph S. Wilcox, National Register & Survey Coordinator
organization Arkansas Historic Preservation Program date Jul 2009
street & number 323 Center Street, 1500 Tower Building telephone (501) 324-9787
city or town Little Rock state AR zip code 72201

Additional Documentation

Submit the following items with the completed form:

Continuation Sheets

Maps

A **USGS map** (7.5 or 15 minute series) indicating the property's location

A **Sketch map** for historic districts and properties having large acreage or numerous resources.

Photographs

Representative **black and white photographs** of the property.

Additional items

(Check with the SHPO or FPO for any additional items.)

Property Owner

(Complete this item at the request of SHPO or FPO.)

name Arkansas Highway Department
street & number P.O. Box 2261 telephone 501-569-2000
city or town Little Rock state AR zip code 72203

Paperwork Reduction Act Statement: This information is being collected for applications to the National Register of Historic Places to nominate properties for listing or determine eligibility for listing, to list properties, and to amend existing listing. Response to this request is required to obtain a benefit in accordance with the National Historic Preservation Act, as amended (16 U.S.C. 470 *et seq.*)

Estimated Burden Statement: Public reporting burden for this form is estimated to average 18.1 hours per response including time for reviewing instructions, gathering and maintaining data, and completing and reviewing the form. Direct comments regarding this burden estimate or any aspect of this form to the Chief, Administrative Services Division, National Park Service, P. O. Box 37127, Washington, DC 20013-7127; and the Office of Management and Budget, Paperwork Reductions Projects (1024-0018), Washington, DC 20303.

UNITED STATES DEPARTMENT OF THE INTERIOR
NATIONAL PARK SERVICE

NATIONAL REGISTER OF HISTORIC PLACES
EVALUATION/RETURN SHEET

REQUESTED ACTION: NOMINATION

PROPERTY Crooked Creek Bridge
NAME:

MULTIPLE Historic Bridges of Arkansas MPS
NAME:

STATE & COUNTY: ARKANSAS, Marion

DATE RECEIVED: 12/11/09 DATE OF PENDING LIST: 12/30/09
DATE OF 16TH DAY: 1/14/10 DATE OF 45TH DAY: 1/25/10
DATE OF WEEKLY LIST:

REFERENCE NUMBER: 09001253

REASONS FOR REVIEW:

APPEAL: N DATA PROBLEM: N LANDSCAPE: N LESS THAN 50 YEARS: N
OTHER: N PDIL: N PERIOD: N PROGRAM UNAPPROVED: N
REQUEST: N SAMPLE: N SLR DRAFT: N NATIONAL: N

COMMENT WAIVER: N

ACCEPT RETURN REJECT 1-21-10 DATE

ABSTRACT/SUMMARY COMMENTS:

Entered in
The National Register
of
Historic Places

RECOM./CRITERIA _____

REVIEWER _____ DISCIPLINE _____

TELEPHONE _____ DATE _____

DOCUMENTATION see attached comments Y/N see attached SLR Y/N

If a nomination is returned to the nominating authority, the nomination is no longer under consideration by the NPS.



CROOKED CREEK BRIDGE

MARION COUNTY, AR

RALPH S. WILCOX

FEBRUARY 2007

ARKANSAS HISTORIC PRESERVATION PROGRAM, LITTLE ROCK, AR
VIEW OF THE BRIDGE LOOKING SOUTHEAST



CROOKED CREEK BRIDGE

MARION COUNTY, AR

RALPH S. WILCOX

FEBRUARY 2007

ARKANSAS HISTORIC PRESERVATION PROGRAM, LITTLE ROCK, AR

VIEW OF THE BRIDGE LOOKING SOUTHWEST



CROOKED CREEK BRIDGE

MARION COUNTY, AR

RALPH S. WILCOX

FEBRUARY 2007

ARKANSAS HISTORIC PRESERVATION PROGRAM, LITTLE ROCK, AR

VIEW OF THE BRIDGE LOOKING SOUTH



BUILT BY
MRS. ORR CONTRACTING CO.
HARRISON, ARK.
1925.

CROOKED CREEK BRIDGE

MARION COUNTY, AR

RALPH S. WILCOX

FEBRUARY 2007

ARKANSAS HISTORIC PRESERVATION PROGRAM, LITTLE ROCK, AR
BUILDER'S PLATE DETAIL, LOOKING WEST.



CROOKED CREEK BRIDGE

MARION COUNTY, AR

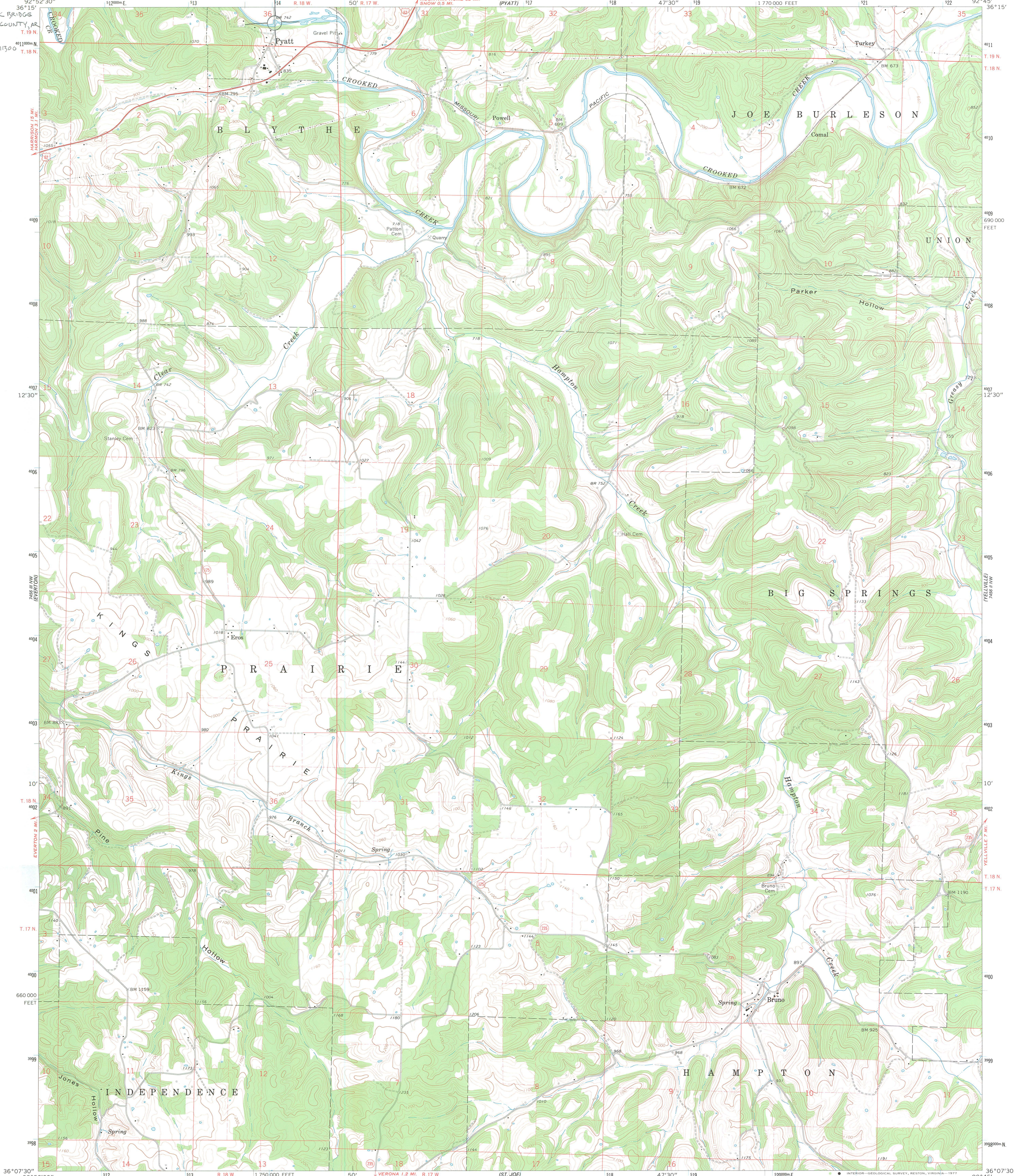
RALPH S. WILCOX

FEBRUARY 2007

ARKANSAS HISTORIC PRESERVATION PROGRAM, LITTLE ROCK, AR

VIEW OF THE BRIDGE LOOKING NORTH

CROOKED CREEK BRIDGES
PYATT, MARION COUNTY, AR
UTM;
15/514040/4011300

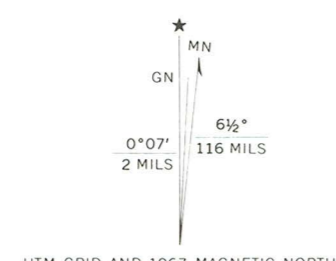


Mapped, edited, and published by the Geological Survey
Control by USGS and USC&GS

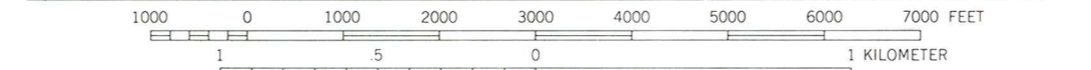
Topography by photogrammetric methods from aerial
photographs taken 1964. Field checked 1967

Polyconic projection. 1927 North American datum
10,000-foot grid based on Arkansas coordinate system, north zone
1000-meter Universal Transverse Mercator grid ticks,
zone 15, shown in blue

Fine red dashed lines indicate selected fence and field lines where
generally visible on aerial photographs. This information is unchecked



SCALE 1:24,000



CONTOUR INTERVAL 20 FEET
NATIONAL GEODETIC VERTICAL DATUM OF 1929



ROAD CLASSIFICATION
Heavy-duty ——— Light-duty ———
Unimproved dirt ———
U.S. Route ——— State Route ———

THIS MAP COMPLIES WITH NATIONAL MAP ACCURACY STANDARDS
FOR SALE BY U. S. GEOLOGICAL SURVEY, DENVER, COLORADO 80225, OR RESTON, VIRGINIA 22092
AND ARKANSAS GEOLOGICAL COMMISSION, LITTLE ROCK, ARKANSAS 72204
A FOLDER DESCRIBING TOPOGRAPHIC MAPS AND SYMBOLS IS AVAILABLE ON REQUEST

BRUNO, ARK.
N3607.5—W9245/7.5

1967

AMS 7456 III NE—SERIES V884



The Department of
**Arkansas
Heritage**

Mike Beebe
Governor

Cathie Matthews
Director

Arkansas Arts Council

*

Arkansas Natural Heritage
Commission

*

Delta Cultural Center

*

Historic Arkansas Museum

*

Mosaic Templars
Cultural Center

*

Old State House Museum



Arkansas Historic
Preservation Program

1500 Tower Building
323 Center Street
Little Rock, AR 72201
(501) 324-9880
fax: (501) 324-9184
tdd: (501) 324-9811

e-mail:

info@arkansaspreservation.org

website:

www.arkansaspreservation.com

An Equal Opportunity Employer



December 2, 2009

Dr. Janet Matthews
Chief of Registration
United States Department of the Interior
National Register of Historic Places
National Park Service
8th Floor
1201 Eye Street, NW
Washington, DC 20005

RE: Crooked Creek Bridge – Pyatt, Marion County, Arkansas

Dear Dr. Matthews:

We are enclosing for your review the above-referenced nomination. The Arkansas Historic Preservation Program has complied with all applicable nominating procedures and notification requirements in the nomination process.

If you need further information, please call Ralph S. Wilcox of my staff at (501) 324-9787. Thank you for your cooperation in this matter.

Sincerely,

Cathie Matthews
State Historic Preservation Officer

CM:rsw

Enclosure