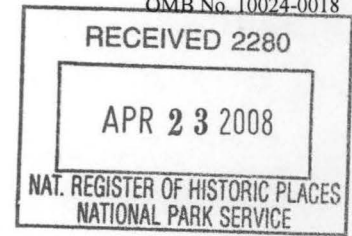


United States Department of the Interior
National Park Service



National Register of Historic Places
Registration Form

This form is for use in nominating or requesting determinations for individual properties and districts. See instructions in *How to Complete the National Register of Historic Places Registration Form* (National Register Bulletin 16A). Complete each item by marking "x" in the appropriate box or by entering the information requested. If an item does not apply to the property being documented, enter "N/A" for "not applicable." For functions, architectural classification, materials, and areas of significance, enter only categories and subcategories from the instructions. Place additional entries and narrative items on continuation sheets (NPS Form 10-900a). Use a typewriter, word processor, or computer, to complete all items.

1. Name of Property

historic name Cotton Plant Water Tower

other names/site number Site #WO0032

2. Location

street & number Intersection of North Main and North Vine Street

not for publication

city or town Cotton Plant

vicinity

state Arkansas code AR county Woodruff code 147 zip code 72036

3. State/Federal Agency Certification

As the designated authority under the National Historic Preservation Act, as amended, I hereby certify that this nomination request for determination of eligibility meets the documentation standards for registering properties in the National Register of Historic Places and meets the procedural and professional requirements set for in 36 CFR Part 60. In my opinion, the property meets does not meet the National Register criteria. I recommend that this property be considered significant nationally statewide locally. (See continuation sheet for additional comments.)

Catherine Matthews
Signature of certifying official/Title

3/31/08
Date

Arkansas Historic Preservation Program
State or Federal agency and bureau

In my opinion, the property meets does not meet the National Register criteria. (See Continuation sheet for additional comments.)

Signature of certifying official/Title

Date

State or Federal agency and bureau

4. National Park Service Certification

- I hereby certify that the property is:
- entered in the National Register.
 See continuation sheet
- determined eligible for the National Register.
 See continuation sheet
- determined not eligible for the National Register.
- removed from the National Register.
- other, (explain:) _____

Edson W. Beall
Signature of the Keeper

6-4-08
Date of Action

Cotton Plant Water Tower
Name of Property

Woodruff County, Arkansas
County and State

5. Classification

Ownership of Property
(Check as many boxes as apply)

- private
- public-local
- public-State
- public-Federal

Category of Property
(Check only one box)

- building(s)
- district
- site
- structure
- object

Number of Resources within Property
(Do not include previously listed resources in count.)

Contributing	Noncontributing	
		buildings
		sites
1		structures
		objects
1		Total

Name of related multiple property listing

(Enter "N/A" if property is not part of a multiple property listing.)

An Ambition to Be Preferred: New Deal Recovery Efforts
and Architecture in Arkansas, 1933-1943

**Number of Contributing resources previously listed
in the National Register**

6. Function or Use

Historic Functions

(Enter categories from instructions)

INDUSTRY/PROCESSING/EXTRACTION/waterworks

Current Functions

(Enter categories from instructions)

INDUSTRY/PROCESSING/EXTRACTION/waterworks

7. Description

Architectural Classification

(Enter categories from instructions)

OTHER/Plain-Traditional

Materials

(Enter categories from instructions)

foundation CONCRETE
walls METAL
roof METAL
other

Narrative Description

(Describe the historic and current condition of the property on one or more continuation sheets.)

United States Department of the Interior
National Park Service

National Register of Historic Places Continuation Sheet

Section number 7 Page 1

SUMMARY

The Cotton Plant Water Tower is located in the middle of the block east of the intersection of Main Street and North Vine Street in the small town of Cotton Plant, Woodruff County, in eastern Arkansas. The tower is located at the city's waterworks complex, and was built by the Pittsburgh Des Moines Steel Company with assistance from Public Works Administration (PWA) in 1935.

ELABORATION

The Cotton Plant Water Tower is located east of North Vine Street in the small town of Cotton Plant, Woodruff County, in eastern Arkansas. The tower is located at the city's waterworks complex, and was built by the Pittsburgh Des Moines Steel Company with assistance from Public Works Administration (PWA) in 1935.

The water tower, which is painted white, is supported by four metal latticed legs that slope inwards towards the tower as they rise. These legs are constructed of a riveted, lattice work on the exterior face with a three-quarter box frame. Steel horizontal braces and steel rods provide lateral rigidity and support between the legs. At the center of the tower a large metal pipe conveys the water to and from the tank.

The water tank has a bowl-shaped bottom that is pierced in the center by the large pipe. A metal walkway with metal pipe handrail around the base of the tank accesses a ladder that ascends the tower's northwestern leg. The walls of the tank are constructed of pieces of curved sheet metal and the south side has "City of Cotton Plant" painted in large, black, block letters. The top of the tower is crowned by a metal conical roof.

Integrity

The Cotton Plant Water Tower retains good integrity. Though the tower is also used for communications equipment it has not been altered. In addition, the city of Cotton Plant has decreased in size and remains a small town, much as it would have been when the water tower was built.

8. Statement of Significance

Applicable National Register Criteria

(Mark "x" in one or more boxes for the criteria qualifying the property for National Register listing.)

- A** Property is associated with events that have made a significant contribution to the broad patterns of our history.
- B** Property is associated with the lives of persons significant in our past.
- C** Property embodies the distinctive characteristics of a type, period, or method of construction or represents the work of a master, or possesses high artistic values, or represents a significant and distinguishable entity whose components lack individual distinction.
- D** Property has yielded, or is likely to yield, information important in prehistory or history.

Criteria Considerations

(Mark "x" in all the boxes that apply.)

Property is:

- A** owned by a religious institution or used for religious purposes.
- B.** removed from its original location.
- C.** birthplace or grave of a historical figure of outstanding importance.
- D** a cemetery.
- E** a reconstructed building, object, or structure.
- F** a commemorative property
- G** less than 50 years of age or achieved significance within the past 50 years.

Levels of Significance (local, state, national)

Local

Areas of Significance (Enter categories from instructions)

Engineering

Politics/Government

Period of Significance

1935

Significant Dates

1935

Significant Person (Complete if Criterion B is marked)

Cultural Affiliation (Complete if Criterion D is marked)

Architect/Builder

Pittsburgh Des Moines Steel Company, Builder

Narrative Statement of Significance

(Explain the significance of the property on one or more continuation sheets.)

9. Major Bibliographical References

Bibliography

(Cite the books, articles, and other sources used in preparing this form on one or more continuation sheets.)

Previous documentation on file (NPS):

- preliminary determination of individual listing (36 CFR 67) has been requested
- previously listed in the National Register
- Previously determined eligible by the National Register
- designated a National Historic Landmark
- recorded by Historic American Buildings Survey # _____
- recorded by Historic American Engineering Record # _____

Primary location of additional data:

- State Historic Preservation Office
- Other State Agency
- Federal Agency
- Local Government
- University
- Other

Name of repository: _____

United States Department of the Interior
National Park Service

National Register of Historic Places Continuation Sheet

Section number 8 Page 1

SUMMARY

The Cotton Plant Water Tower is being nominated to the National Register of Historic Places with **local significance** under **Criterion C** as a good example of a 1930s water tower. The Cotton Plant Water Tower is also being nominated to the National Register under **Criterion A** for its associations with the activities of the PWA in Woodruff County during the 1930s. The Cotton Plant Water Tower is being submitted to the National Register of Historic Places under the multiple-property listing "An Ambition to Be Preferred: New Deal Recovery Efforts and Architecture in Arkansas, 1933-1943."

ELABORATION

Sanborn Fire Insurance Company noted in its first map of Cotton Plant that the small, eastern Arkansas city had a four inch main running a short distance along Main Street. This water main served eight one inch hydrants used solely for sprinkling the unpaved street. One water tower, sixty-three feet above ground, held 23,000 gallons of water to help keep the dust to a minimum in this quickly growing town. This first water tower was behind a blacksmith shop north of Main Street and west of Ammon Street in the middle of the block. Though the population, 900 in 1908, reached 1,661 by 1920, the city continued to maintain this simple water system and 23,000 gallon tank.¹

Cotton Plant was first called Richmond and was sparsely settled as early as 1840. William Lynch was the first man to build a store in the area, settling here from Mississippi in 1846.² After unsuccessfully seeking application for a post office by the name of Richmond, the town settled on Cotton Plant in 1852.³ Lynch's store attracted others and soon the village became the center of economic activity in this relatively isolated part of Woodruff County. It was not until 1887 that the town was formally incorporated.⁴

¹ Sanborn Fire Insurance Company, *Cotton Plant*, [map], 1"=50' (Chicago: Sanborn Fire Insurance Company, 1908), Sheet 1. Paula Harmon Barnett, "Cotton Plant (Woodruff County)," *Encyclopedia of Arkansas History and Culture* accessed online at <http://www.encyclopediaofarkansas.net> on 14 January 2008.

² Goodspeed Publishing Company, *The Goodspeed Biographical and Historical Memoirs of Eastern Arkansas* (Chicago: Goodspeed Publishing Company, 1890; reprint Easley, SC: Southern Historical Press, 1971), 305.

³ Russell Pierce Baker, *From Memdag to Norsk: A Historical Directory of Arkansas Post Offices, 1832-1971* (Hot Springs, AR: Arkansas Genealogical Society, 1988), 52.

⁴ Dallas T. Herndon ed., *Centennial History of Arkansas* (Chicago: S. J. Clarke Publishing Company, 1922), 892.

United States Department of the Interior
National Park Service

National Register of Historic Places Continuation Sheet

Section number 8 Page 2

Aside from becoming the economic center for this southern part of Woodruff County, the town built and maintained a diverse agricultural and industrial economy as well. Cotton Plant was made the southern district seat for Woodruff County in 1902. The Memphis and Little Rock Railway was built through the area in 1872. A narrow gauge railroad, the Batesville & Brinkley Railroad, was built into Cotton Plant in 1881. The Missouri and North Arkansas Railroad connected with the Memphis and Little Rock, by then owned by the Chicago, Rock Island, and Pacific Railroad, at Cotton Plant in 1909.⁵

Shipments from Cotton Plant amounted to 1,500 to 2,000 tons of cotton seed and between 4,000 to 7,000 bales of cotton each year for the Batesville & Brinkley.⁶ In 1908 the town claimed a sizeable and diverse number of businesses: seventeen dry good and general stores, two banks, two druggists, three billards halls, two hotels, one blacksmith, one printer, one livery, an ice plant, one agricultural implement dealer, one cotton gin, and the Cotton Plant Oil Mill Company, among others.⁷ The town continued to grow and experienced a timber boom in the early 1900s. By 1920, there were seven stave factories and five sawmills operating in or near the town. This was in addition to the wholesale grocers, cotton gins, seed mills, and numerous other new businesses.⁸

Due to the continued growth of the community, by the late 1920s, it was determined that Cotton Plant needed a water tower. The creation of the PWA under Franklin Delano Roosevelt's New Deal programs gave Cotton Plant the perfect opportunity to get a waterworks while also giving relief to an economy hit hard by declining cotton prices. An application was made for PWA assistance in 1934, and the project was allotted a \$46,000 loan and a \$14,382 grant on February 14, 1934. (The estimated total cost for the project was \$61,123.) On December 4, 1934, a contract for \$52,929 was finalized.⁹

Construction began on the water tower, which was built by the Pittsburgh Des Moines Steel Company, on February 5, 1935, and proceeded quickly. The water tower was finished on December 2, 1935.¹⁰ Since the water tower was put into service, the community has continued to use the facility.

⁵ David Y. Thomas, *Arkansas and its People: A History, 1541-1930* (New York: The American Historical Society, 1930), 430; Barrett, "Cotton Plant (Woodruff County);" Clifton E. Hull, *Shortline Railroads of Arkansas* (Norman: University of Oklahoma Press, 1969), 72.

⁶ Goodspeed, 283.

⁷ Sanborn, *Cotton Plant*, 1908, Sheet 1.

⁸ Herndon, 892. Sanborn Fire Insurance Company, *Cotton Plant*, [map], 1"=50', (Chicago: Sanborn Fire Insurance Company, 1918).

⁹ Information on Arkansas PWA projects in the files of the Arkansas Historic Preservation Program.

¹⁰ *Ibid.*

United States Department of the Interior
National Park Service

National Register of Historic Places Continuation Sheet

Section number 8 Page 3

The PWA was an important part of Arkansas's New Deal history, and the Cotton Plant Water Tower is a living reminder of the PWA's importance in providing jobs and development in Arkansas's communities. The Cotton Plant Water Tower is a good example of a 1930s-era water tower built by the PWA, and illustrates the activities of the PWA in the early twentieth century. The survival and continued preservation of the Cotton Plant Water Tower is a monument to the dedication of the Cotton Plant community.

STATEMENT OF SIGNIFICANCE

The Cotton Plant Water Tower is being nominated to the National Register of Historic Places with **local significance** under **Criterion C** as a good example of a 1930s water tower. The Cotton Plant Water Tower is also being nominated to the National Register under **Criterion A** for its associations with the activities of the PWA in Woodruff County during the 1930s. The Cotton Plant Water Tower is being submitted to the National Register of Historic Places under the multiple-property listing "An Ambition to Be Preferred: New Deal Recovery Efforts and Architecture in Arkansas, 1933-1943."

United States Department of the Interior
National Park Service

National Register of Historic Places Continuation Sheet

Section number 9 Page 1

BIBLIOGRAPHY

Baker, Russell Pierce. *From Memdag to Norsk: A Historical Directory of Arkansas Post Offices, 1832-1971*. Hot Springs, AR: Arkansas Genealogical Society, 1988.

Barnett, Paula Harmon. "Cotton Plant (Woodruff County)," *Encyclopedia of Arkansas History and Culture*. Accessed online at <http://www.encyclopediaofarkansas.net> on 14 January 2008.

Goodspeed Publishing Company. *The Goodspeed Biographical and Historical Memoirs of Eastern Arkansas*. Chicago: Goodspeed Publishing Co., 1890.

Herndon, Dallas T. ed., *Centennial History of Arkansas*. Chicago: S. J. Clarke Publishing Company, 1922.

Hull, Clifton E. *Shortline Railroads of Arkansas*. Norman: University of Oklahoma Press, 1969.

Information on Arkansas PWA projects in the files of the Arkansas Historic Preservation Program.

Sanborn Fire Insurance Company. *Cotton Plant*. [map], 1"=50'. Chicago: Sanborn Fire Insurance Company, 1908.

_____. *Cotton Plant*. [map], 1"=50'. Chicago: Sanborn Fire Insurance Company, 1918.

Thomas, David Y. *Arkansas and its People: A History, 1541-1930*. New York: The American Historical Society, 1930.

Cotton Plant Water Tower
Name of Property

Woodruff County, Arkansas
County and State

10. Geographical Data

Acreage of Property Less than one.

UTM References

(Place additional UTM references on a continuation sheet.)

1	<u>15</u>	<u>659856</u>	<u>3874795</u>	3	<u> </u>	<u> </u>	<u> </u>
	Zone	Easting	Northing		Zone	Easting	Northing
2	<u> </u>	<u> </u>	<u> </u>	4	<u> </u>	<u> </u>	<u> </u>

See continuation sheet

Verbal Boundary Description

(Describe the boundaries of the property on a continuation sheet.)

Boundary Justification

(Explain why the boundaries were selected on a continuation sheet.)

11. Form Prepared By

name/title Van Zbinden, National Register Historian
organization Arkansas Historic Preservation Program date 14 January 2008
street & number 323 Center Street, 1500 Tower Building telephone 501.324.9880
city or town Little Rock state AR zip code 72201

Additional Documentation

Submit the following items with the completed form:

Continuation Sheets

Maps

- A **USGS map** (7.5 or 15 minute series) indicating the property's location
- A **Sketch map** for historic districts and properties having large acreage or numerous resources.

Photographs

Representative **black and white photographs** of the property.

Additional items

(Check with the SHPO or FPO for any additional items.)

Property Owner

(Complete this item at the request of SHPO or FPO.)

name City of Cotton Plant
street & number P. O. Box 220 telephone
city or town Cotton Plant state AR zip code 72036

Paperwork Reduction Act Statement: This information is being collected for applications to the National Register of Historic Places to nominate properties for listing or determine eligibility for listing, to list properties, and to amend existing listing. Response to this request is required to obtain a benefit in accordance with the National Historic Preservation Act, as amended (16 U.S.C. 470 *et seq.*)

Estimated Burden Statement: Public reporting burden for this form is estimated to average 18.1 hours per response including time for reviewing instructions, gathering and maintaining data, and completing and reviewing the form. Direct comments regarding this burden estimate or any aspect of this form to the Chief, Administrative Services Division, National Park Service, P. O. Box 37127, Washington, DC 20013-7127; and the Office of Management and Budget, Paperwork Reductions Projects (1024-0018), Washington, DC 20303.

United States Department of the Interior
National Park Service

National Register of Historic Places Continuation Sheet

Section number 10 Page 1

VERBAL BOUNDARY DESCRIPTION

The boundary consists of the land located within a 25-foot radius of the center of the water tower.

BOUNDARY JUSTIFICATION

The boundary encompasses all of the land historically associated with the Cotton Plant Water Tower.

UNITED STATES DEPARTMENT OF THE INTERIOR
NATIONAL PARK SERVICE

NATIONAL REGISTER OF HISTORIC PLACES
EVALUATION/RETURN SHEET

REQUESTED ACTION: NOMINATION

PROPERTY Cotton Plant Water Tower
NAME:

MULTIPLE New Deal Recovery Efforts in Arkansas MPS
NAME:

STATE & COUNTY: ARKANSAS, Woodruff

DATE RECEIVED: 4/23/08 DATE OF PENDING LIST: 5/12/08
DATE OF 16TH DAY: 5/27/08 DATE OF 45TH DAY: 6/06/08
DATE OF WEEKLY LIST:

REFERENCE NUMBER: 08000490

EVALUATION/RETURN SHEET

REASONS FOR REVIEW:

APPEAL: N DATA PROBLEM: N LANDSCAPE: N LESS THAN 50 YEARS: N
OTHER: N PDIL: N PERIOD: N PROGRAM UNAPPROVED: N
REQUEST: N SAMPLE: N SLR DRAFT: N NATIONAL: N

COMMENT WAIVER: N

ACCEPT RETURN REJECT 6-4-08 DATE

ABSTRACT/SUMMARY COMMENTS:

Entered in
The National Register
of
Historic Places

RECOM./CRITERIA _____

REVIEWER _____ DISCIPLINE _____

TELEPHONE _____ DATE _____

DOCUMENTATION see attached comments Y/N see attached SLR Y/N

If a nomination is returned to the nominating authority, the nomination is no longer under consideration by the NPS.



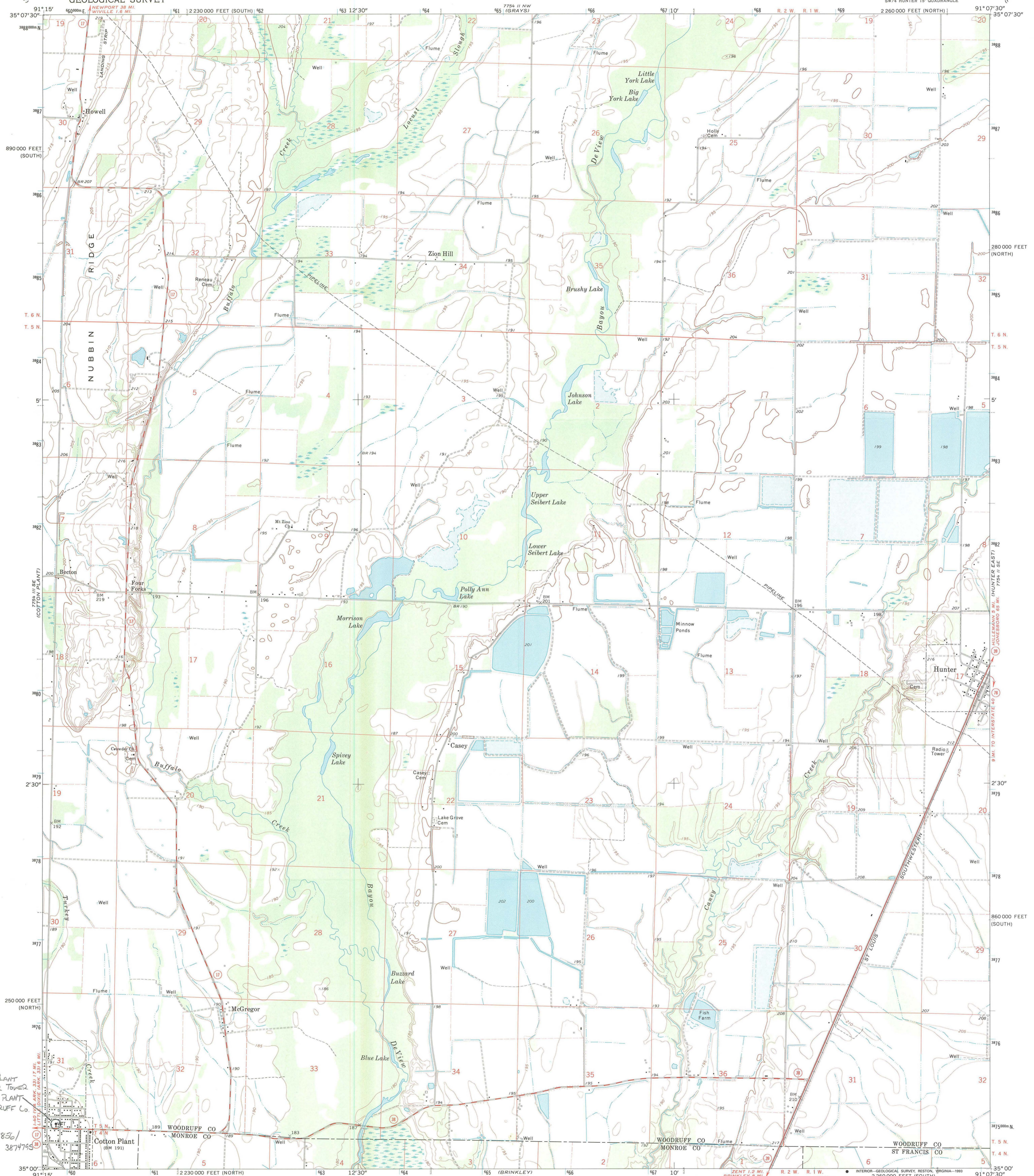
1. COTTON PLANT WATER TOWER
2. WOODRUFF COUNTY, AR
3. RALPH WILCOX
4. DECEMBER 2006
5. ARKANSAS HISTORIC PRESERVATION PROGRAM, LITTLE ROCK, AR
6. SOUTH ELEVATION LOOKING NORTH
7. # 1



1. COTTON PLANT WATER TOWER
2. WOODRUFF COUNTY, AR
3. RALPH WILCOX
4. DECEMBER 2006
5. ARKANSAS HISTORIC PRESERVATION PROGRAM, LITTLE ROCK, AR
6. SOUTH ELEVATION DETAIL
7. # 2

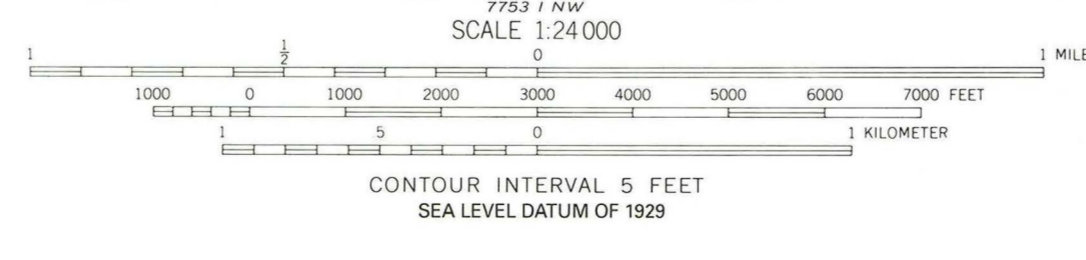
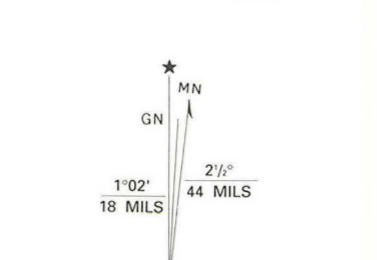


1. COTTON PLANT WATER TOWER
2. WOODRUFF COUNTY, AR
3. RALPH WILCOX
4. DECEMBER 2006
5. ARKANSAS HISTORIC PRESERVATION PROGRAM, LITTLE ROCK, AR
6. STRUCTURAL DETAIL, EAST LEG LOOKING NORTH WEST
7. # 3



COTTON PLANT
WATER TOWER
COTTON PLANT
WOODRUFF CO.
UTM:
15/659856/1
3874793

Produced by the United States Geological Survey
Control by USGS and NOS/NOAA
Topography by photogrammetric methods from aerial photographs taken 1970. Field checked 1971
Projection: Arkansas coordinate system, north zone (Lambert conformal conic)
10,000-foot grid ticks: Arkansas coordinate system, north and south zones
1000-meter Universal Transverse Mercator grid ticks, zone 15, shown in blue
1927 North American Datum (NAD 27)
North American Datum of 1983 (NAD 83) is shown by dashed corner ticks
The values of the shift between NAD 27 and NAD 83 for 7.5-minute intersections are given in USGS Bulletin 1875
Fine red dashed lines indicate selected fence and field lines where generally visible on aerial photographs. This information is uncorrected
Photospliced from 1990 source; no major culture or drainage changes observed. Boundaries revised and names verified 1993



ROAD CLASSIFICATION
Primary highway, hard surface
Secondary highway, hard surface
Light-duty road, hard or improved surface
Unimproved road
Interstate Route
U. S. Route
State Route

THIS MAP COMPLIES WITH NATIONAL MAP ACCURACY STANDARDS
FOR SALE BY U.S. GEOLOGICAL SURVEY, DENVER, COLORADO 80225, OR RESTON, VIRGINIA 22092
AND ARKANSAS GEOLOGICAL COMMISSION, LITTLE ROCK, ARKANSAS 72204
A FOLDER DESCRIBING TOPOGRAPHIC MAPS AND SYMBOLS IS AVAILABLE ON REQUEST

HUNTER WEST, ARK.
SW/4 HUNTER 15' QUADRANGLE
35091-A2-TF-024
1971
MINOR REVISION 1993
DMA 7754 II SW-SERIES Y884



The Department of
**Arkansas
Heritage**

Mike Beebe
Governor

Cathie Matthews
Director

Arkansas Arts Council

Arkansas Natural Heritage
Commission

Delta Cultural Center

Historic Arkansas Museum

Mosaic Templars
Cultural Center

Old State House Museum



Arkansas Historic
Preservation Program

1500 Tower Building
323 Center Street
Little Rock, AR 72201
(501) 324-9880
fax: (501) 324-9184
tdd: (501) 324-9811

e-mail:

info@arkansaspreservation.org

website:

www.arkansaspreservation.com

An Equal Opportunity Employer



April 4, 2008



Dr. Janet Matthews
Chief of Registration
United States Department of the Interior
National Register of Historic Places
National Park Service
8th Floor
1201 Eye Street, NW
Washington, D.C. 20005

RE: Cotton Plant Water Tower, Cotton Plant, Woodruff County

Dear Dr. Matthews,

We are enclosing for your review the above-referenced nomination. The Arkansas Historic Preservation Program has complied with all applicable nominating procedures and notification requirements in the nomination process.

If you need further information, please call Van Zbinden of my staff at (501) 324-9789. Thank you for your cooperation in this matter.

Sincerely,

Cathie Matthews
State Historic Preservation Officer

CM:vz

Enclosure