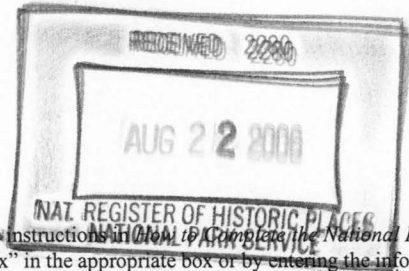


United States Department of the Interior
National Park Service

National Register of Historic Places
Registration Form



This form is for use in nominating or requesting determinations for individual properties and districts. See instructions in *National Register of Historic Places Registration Form* (National Register Bulletin 16A). Complete each item by marking "x" in the appropriate box or by entering the information requested. If an item does not apply to the property being documented, enter "N/A" for "not applicable." For functions, architectural classification, materials, and areas of significance, enter only categories and subcategories from the instructions. Place additional entries and narrative items on continuation sheets (NPS Form 10-900a). Use a typewriter, word processor, or computer, to complete all items.

1. Name of Property

historic name Eudora City Hall
other names/site number Site #CH0036

2. Location

street & number 239 South Main Street not for publication
city or town Eudora vicinity
state Arkansas code AR county Chicot code 017 zip code 71640

3. State/Federal Agency Certification

As the designated authority under the National Historic Preservation Act, as amended, I hereby certify that this nomination
request for determination of eligibility meets the documentation standards for registering properties in the National Register of Historic
Places and meets the procedural and professional requirements set for in 36 CFR Part 60. In my opinion, the property meets
does not meet the National Register criteria. I recommend that this property be considered significant
 nationally statewide locally. (See continuation sheet for additional comments.)

Colleen Matthews 7/31/06
Signature of certifying official/Title Date
Arkansas Historic Preservation Program
State or Federal agency and bureau

In my opinion, the property meets does not meet the National Register criteria. (See Continuation sheet for additional comments.)

Signature of certifying official/Title Date

State or Federal agency and bureau

4. National Park Service Certification

- I hereby certify that the property is:
- entered in the National Register.
 See continuation sheet
 - determined eligible for the National Register.
 See continuation sheet
 - determined not eligible for the National Register.
 - removed from the National Register.
 - other, (explain:)

Edson H. Beall 10-5-06
Signature of the Keeper Date of Action

Eudora City Hall

Name of Property

Chicot County, Arkansas

County and State

5. Classification

Ownership of Property

(Check as many boxes as apply)

- private, public-local, public-State, public-Federal

Category of Property

(Check only one box)

- building(s), district, site, structure, object

Number of Resources within Property

(Do not include previously listed resources in count.)

Table with columns: Contributing, Noncontributing, buildings, sites, structures, objects, Total. Values: 1, 1

Name of related multiple property listing

(Enter "N/A" if property is not part of a multiple property listing.)

An Ambition to Be Preferred: New Deal Recovery Efforts and Architecture in Arkansas, 1933-1943

Number of Contributing resources previously listed in the National Register

N/A

6. Function or Use

Historic Functions

(Enter categories from instructions)

GOVERNMENT/City Hall

Current Functions

(Enter categories from instructions)

GOVERNMENT/City Hall

7. Description

Architectural Classification

(Enter categories from instructions)

MODERN MOVEMENT/Art Deco

Materials

(Enter categories from instructions)

foundation CONCRETE

walls BRICK

roof TAR BUILT-UP

other

Narrative Description

(Describe the historic and current condition of the property on one or more continuation sheets.)

United States Department of the Interior
National Park Service

National Register of Historic Places Continuation Sheet

Section number 7 Page 1

SUMMARY

The Eudora City Hall is located at 239 South Main Street in Eudora, Chicot County, Arkansas, in the far southeastern corner of the state. The two-story building with at least a partial basement rests on a continuous cast-concrete foundation. The building has brick walls (yellow brick on the front and red brick on the sides and rear) and six-over-six, double-hung wood windows. The building is topped by a flat roof with a parapet.

ELABORATION

The Eudora City Hall, which was built in 1936 by the Public Works Administration (PWA), is located at 239 South Main Street in Eudora, Chicot County, Arkansas, a small town located in extreme southeastern Arkansas. The Art Deco-style building is built on a continuous concrete foundation that houses at least a partial basement. The walls of the building are brick, with yellow brick used on the front façade and red brick used on the side and rear façades. The building's windows, for the most part, consist of six-over six, double-hung wood windows. The building is topped by a flat roof with parapet.

Modifications to the building have been minor, and center on the replacement of the building's front doors.

Front/West Façade

The front façade of the building faces west towards South Main Street and is three bays wide. The northernmost bay has the building's main entrance on the first floor, and projects slightly from the rest of the building's façade. The entrance consists of a metal-framed, plate glass door with sidelights on either side and a transom window above. (Originally, the entrance consisted of two wood-frame doors with multiple panes of glass topped by a ten-pane transom.) The transom window reads "CITY / HALL / 239." The entrance is surrounded by a decorative surround that features fluted pilasters on each side capped with square panels with rosettes in them. The pilasters also have decorative octagonal lights near the top. Above the entrance is a pentagonal panel with stacked V's in the center topped by a diamond panel with rosette. To either side of the stacked V's are diagonal strips with stylized plants and two semicircular decorations. The second floor of the northernmost bay is fenestrated by a single six-over six, double-hung wood window with a brick sill. Above the window is a stone panel that reads "CITY HALL."

The center bay of the front façade, on the first floor, is fenestrated by a band of three six-over six, double-hung wood windows with brick sill and lintel comprised of a row of soldier bricks. The second floor is fenestrated by a single six-over six, double-hung wood window with a brick sill. In addition, a course of stone spans the façade at the top of the second floor windows. Above the second floor window in the center bay is a square stone panel that features a "Λ" in front of a stylized "U." The background of the panel consists of inverted V's.

In between the center and southern bay is an engaged pilaster capped by a stone with a chevron pattern on it. The first floor of the southern bay has a large entrance. The entrance consists of a metal-framed, plate glass door with sidelights on either side and a transom window above. (Originally, the entrance consisted of two

United States Department of the Interior
National Park Service

National Register of Historic Places Continuation Sheet

Section number 7 Page 2

sets of large casement doors that had wood-frame doors with fourteen panes of glass per door.) As in the center bay, the second floor of the southern bay is fenestrated by a single six-over six, double-hung wood window with a brick sill. In addition, a course of stone spans the façade at the top of the second floor windows. Above the second floor window in the center bay is a square stone panel that features a “Λ” in front of a stylized “U.” The background of the panel consists of inverted V’s.

At the southern corner of the building is another engaged pilaster capped by a stone with a chevron pattern on it.

Side/South Façade

The south façade is a blank brick wall that is devoid of fenestration.

Rear/East Façade

The rear façade of the building is divided into five bays. Beginning at the north end of the building, the first bay has a small, wood-frame, single-pane window with a brick sill and metal bars over it at the bottom of the first floor. In between the first and second floors is a single six-over six, double-hung wood window with a brick sill.

Proceeding south along the façade, the next two bays are fenestrated with single six-over six, double-hung wood windows on each floor. The fourth bay from the north also has a single six-over six, double-hung wood window on the second floor and a solid metal door on the first floor. A set of cast concrete steps with metal pipe handrail leads up to the entrance. The southernmost bay is fenestrated with single six-over six, double-hung wood windows on each floor, with metal bars covering the window on the first floor. Also in the southernmost bay, a wood-frame, three-pane window provides light into the basement.

Side/North Façade

The north façade is a blank brick wall that is devoid of fenestration.

Integrity

The Eudora City Hall retains good integrity. The major change to the exterior of the building since it was constructed is the replacement of the entrances on the front façade sometime after 1979. However, the size of the original openings is still evident. Even though the entrances have been replaced, it is still easy to recognize the building as city hall, a purpose it still fulfills. The fact that the Eudora City Hall has always been in the small town of Eudora, and remains so today, also allows the setting around city hall to reflect its period of significance.

8. Statement of Significance

Applicable National Register Criteria

(Mark "x" in one or more boxes for the criteria qualifying the property for National Register listing.)

- Criteria A, B, C, D with checkboxes and descriptions.

Criteria Considerations

(Mark "x" in all the boxes that apply.)

Property is:

- Criteria A through G with checkboxes and descriptions.

Levels of Significance (local, state, national)

Local

Areas of Significance (Enter categories from instructions)

Architecture

Politics/Government

Period of Significance

1936-1956

Significant Dates

1936-1956

Significant Person (Complete if Criterion B is marked)

Cultural Affiliation (Complete if Criterion D is marked)

Architect/Builder

A. N. McAninch, Architect

T. A. Lusinger, Builder

Narrative Statement of Significance

(Explain the significance of the property on one or more continuation sheets.)

9. Major Bibliographical References

Bibliography

(Cite the books, articles, and other sources used in preparing this form on one or more continuation sheets.)

Previous documentation on file (NPS):

- Documentation checkboxes: preliminary determination, previously listed, etc.

Primary location of additional data:

- Location checkboxes: State Historic Preservation Office, Other State Agency, etc.

Name of repository:

United States Department of the Interior
National Park Service

National Register of Historic Places Continuation Sheet

Section number 8 Page 1

SUMMARY

The Eudora City Hall is being nominated to the National Register of Historic Places with **local significance** under **Criterion C** as the best example of the Art Deco style of architecture in Eudora. The Eudora City Hall is also being nominated to the National Register under **Criterion A** for its associations with the activities of the Public Works Administration in Chicot County during the 1930s, and for its associations with governmental activities in Eudora. The Eudora City Hall is being submitted to the National Register of Historic Places under the multiple-property listing "An Ambition to Be Preferred: New Deal Recovery Efforts and Architecture in Arkansas, 1933-1943."

ELABORATION

Early settlement in Chicot County occurred along the Mississippi River, which forms the county's eastern boundary. It is also along the river where the first towns formed in the county. By 1823, there were enough settlers in the area to form Chicot County on October 25. Its boundaries were defined by an act passed by the Legislature on November 2, 1835, and it originally included parts of Drew and Ashley counties.¹

As settlement in the Chicot County area continued, people began moving inland from the Mississippi River and established additional communities, including Eudora. Although it is not known exactly when Eudora was founded, it was a substantial enough community to have a post office established on December 4, 1856. Henry Stern was the first postmaster. However, the community apparently remained fairly small since the post office was discontinued in 1867, reestablished in 1871, discontinued again in 1876, and finally reestablished permanently in 1888.²

The town of Eudora most likely received an economic boost when the railroad line was built through the town and surrounding area, sometime after 1895. After the railroad line arrived, the residents no longer had to rely only on the river for transportation and trade. The railroad also meant that more people could easily reach the community to live there.

City services were slow to come to Eudora after its establishment. By 1912, the city was still without a waterworks, fire department (although church bells were used as the fire alarm), or electricity. By 1921, a waterworks and electric light company had been established along with a volunteer fire department with three hose carts. The fire alarm had also changed to pistol shots. The fire department had improved by 1932 having a siren for the alarm and a Reo truck had replaced the hose carts. A jail had also been built in the community.³

¹ *Biographical and Historical Memoirs of Southern Arkansas*. Chicago: The Goodspeed Publishing Co., 1890, pp. 1061 and 1064-1065.

² Thelma Downing Pulley. "Eudora Post Office Established in 1856." Found at: <http://www.seark.net/~sabra/eud.html>.

³ Sanborn Fire Insurance maps for Eudora, Arkansas: June 1912, February 1921, and October 1932, in the files of the Richard C. Butler Center for Arkansas Studies, Little Rock, Arkansas.

United States Department of the Interior
National Park Service

National Register of Historic Places Continuation Sheet

Section number 8 Page 2

By the 1930s, Eudora was substantial enough to need a city hall. The city turned to the PWA for assistance in constructing the building, and they received a loan of \$9,000 and a grant of \$6,142, for a total amount of \$16,142. The estimated total cost for the building was \$15,697, so the PWA assistance would more than cover the cost of the building. The money was allotted on January 5, 1936, and by the time the contract was concluded on May 12, 1936, the cost had shrunk to \$14,487, which was the amount specified in the contract.⁴ The project was given project number Arkansas 1118R.

Construction began on the building on June 30, 1936, and the design for the building was the creation of Little Rock architect A. N. McAninch. McAninch designed many buildings for PWA contracts. Additionally, many of his buildings were designed in the Art Deco style, including the Hempstead County Courthouse (NR listed 5/19/1994), Rison High School (demolished) and St. Anthony's Hospital in Morrilton, which was originally intended to be a PWA project (NR listed 3/28/1986), although he did use other styles, such as the Gothic Revival for the First Baptist Church in Little Rock (NR listed 8/9/1994).

T. A. Lusinger was the contractor for the building and once construction began, it did not take long for the building to be completed. Construction was completed less than three months later on October 7, 1936. The completed building was a good example of the Art Deco style, including decorative geometric and stylized motifs.⁵ The city moved into the building in late 1936, and the building remains in use as city hall today.

Modifications to the building have been minor since it was completed in 1936. Sometime after 1979, the original front entrances to the building, which were wood doors with multiple panes of glass, were replaced with the current metal plate glass doors. In addition, a siren has been added to the southwest corner of the building.

Today, the Eudora City Hall is a living reminder of Arkansas's PWA and New Deal history. The Eudora City Hall is a good example of the Art Deco style, and illustrates the activities of the PWA in the early twentieth century. The survival and continued preservation of the Eudora City Hall is a monument to the dedication of the Eudora community.

STATEMENT OF SIGNIFICANCE

The Eudora City Hall is being nominated to the National Register of Historic Places with **local significance** under **Criterion C** as the best example of the Art Deco style of architecture in Eudora. The Eudora City Hall is also being nominated to the National Register under **Criterion A** for its associations with the activities of the Public Works Administration in Chicot County during the 1930s, and for its associations with

⁴ Information on Arkansas PWA projects in the files of the Arkansas Historic Preservation Program.

⁵ *Ibid.*

Eudora City Hall

Name of Property

Chicot County, Arkansas

County and State

United States Department of the Interior
National Park Service

National Register of Historic Places Continuation Sheet

Section number 8 Page 3

governmental activities in Eudora. The Eudora City Hall is being submitted to the National Register of Historic Places under the multiple-property listing "An Ambition to Be Preferred: New Deal Recovery Efforts and Architecture in Arkansas, 1933-1943."

United States Department of the Interior
National Park Service

National Register of Historic Places Continuation Sheet

Section number 9 Page 1

BIBLIOGRAPHY

Biographical and Historical Memoirs of Southern Arkansas. Chicago: The Goodspeed Publishing Co., 1890.

Information on Arkansas PWA projects in the files of the Arkansas Historic Preservation Program.

Pulley, Thelma Downing. "Eudora Post Office Established in 1856." Found at:
<http://www.seark.net/~sabra/eud.html>.

Sanborn Fire Insurance maps for Eudora, Arkansas: June 1912, February 1921, and October 1932, in the files of the Richard C. Butler Center for Arkansas Studies, Little Rock, Arkansas.

Eudora City Hall
Name of Property

Chicot County, Arkansas
County and State

10. Geographical Data

Acreege of Property Less than one acre.

UTM References

(Place additional UTM references on a continuation sheet.)

1	<u>15</u>	<u>662197</u>	<u>3664670</u>	3	<u> </u>	<u> </u>	<u> </u>
	Zone	Easting	Northing		Zone	Easting	Northing
2	<u> </u>	<u> </u>	<u> </u>	4	<u> </u>	<u> </u>	<u> </u>

See continuation sheet

Verbal Boundary Description

(Describe the boundaries of the property on a continuation sheet.)

Boundary Justification

(Explain why the boundaries were selected on a continuation sheet.)

11. Form Prepared By

name/title Ralph S. Wilcox, National Register & Survey Coordinator
organization Arkansas Historic Preservation Program date May 22, 2006
street & number 1500 Tower Building, 323 Center Street telephone (501) 324-9880
city or town Little Rock state AR zip code 72201

Additional Documentation

Submit the following items with the completed form:

Continuation Sheets

Maps

A **USGS map** (7.5 or 15 minute series) indicating the property's location

A **Sketch map** for historic districts and properties having large acreage or numerous resources.

Photographs

Representative **black and white photographs** of the property.

Additional items

(Check with the SHPO or FPO for any additional items.)

Property Owner

(Complete this item at the request of SHPO or FPO.)

name City of Eudora
street & number 239 South Main Street telephone
city or town Eudora state AR zip code 71640

Paperwork Reduction Act Statement: This information is being collected for applications to the National Register of Historic Places to nominate properties for listing or determine eligibility for listing, to list properties, and to amend existing listing. Response to this request is required to obtain a benefit in accordance with the National Historic Preservation Act, as amended (16 U.S.C. 470 *et seq.*)

Estimated Burden Statement: Public reporting burden for this form is estimated to average 18.1 hours per response including time for reviewing instructions, gathering and maintaining data, and completing and reviewing the form. Direct comments regarding this burden estimate or any aspect of this form to the Chief, Administrative Services Division, National Park Service, P. O. Box 37127, Washington, DC 20013-7127; and the Office of Management and Budget, Paperwork Reductions Projects (1024-0018), Washington, DC 20303.

United States Department of the Interior
National Park Service

National Register of Historic Places Continuation Sheet

Section number 10 Page 1

VERBAL BOUNDARY DESCRIPTION

From the southeast corner of the Downs Street and Main Street intersection, proceed southerly along the east side of Main Street for 540 feet to the point of beginning. From the point of beginning, proceed easterly perpendicular to Main Street for 85 feet, thence proceed southerly parallel to Main Street for 125 feet, thence proceed westerly perpendicular to Main Street for 85 feet, thence proceed northerly along the east side of Main Street for 125 feet to the point of beginning.

BOUNDARY JUSTIFICATION

The boundary contains all of the land historically associated with the Eudora City Hall.

UNITED STATES DEPARTMENT OF THE INTERIOR
NATIONAL PARK SERVICE

NATIONAL REGISTER OF HISTORIC PLACES
EVALUATION/RETURN SHEET

REQUESTED ACTION: NOMINATION

PROPERTY Eudora City Hall
NAME:

MULTIPLE New Deal Recovery Efforts in Arkansas MPS
NAME:

STATE & COUNTY: ARKANSAS, Chicot

DATE RECEIVED: 8/22/06 DATE OF PENDING LIST: 9/05/06
DATE OF 16TH DAY: 9/20/06 DATE OF 45TH DAY: 10/05/06
DATE OF WEEKLY LIST:

REFERENCE NUMBER: 06000910

REASONS FOR REVIEW:

APPEAL: N DATA PROBLEM: N LANDSCAPE: N LESS THAN 50 YEARS: N
OTHER: N PDIL: N PERIOD: N PROGRAM UNAPPROVED: N
REQUEST: N SAMPLE: N SLR DRAFT: N NATIONAL: N

COMMENT WAIVER: N

 ACCEPT RETURN REJECT 10-5-06 DATE

ABSTRACT/SUMMARY COMMENTS:

Entered in the
National Register

RECOM./CRITERIA _____

REVIEWER _____ DISCIPLINE _____

TELEPHONE _____ DATE _____

DOCUMENTATION see attached comments Y/N see attached SLR Y/N

If a nomination is returned to the nominating authority, the nomination is no longer under consideration by the NPS.



EUDORA CITY HALL

CHICOT COUNTY, AR

ELIZABETH JAMES

JULY 2005

ARKANSAS HISTORIC PRESERVATION PROGRAM, LITTLE ROCK, AR

WEST FACADE, LOOKING EAST



EUDORA CITY HALL
CHICOT COUNTY, AR
ELIZABETH JAMES
JULY 2005

ARKANSAS HISTORIC PRESERVATION PROGRAM, LITTLE ROCK, AR
WEST FACADE, LOOKING SOUTHEAST

66A



EUDORA CITY HALL
CHICOT COUNTY, AR
ELIZABETH JAMES

JULY 2005

ARKANSAS HISTORIC PRESERVATION PROGRAM, LITTLE ROCK, AR
SOUTH AND EAST FACADES, LOOKING NORTHWEST



EUDORA CITY HALL
CHicot COUNTY, AR
ELIZABETH JAMES
JULY 2005

ARKANSAS HISTORIC PRESERVATION PROGRAM, LITTLE ROCK, AR
NORTH AND EAST FACADES, LOOKING SOUTHWEST.



EUDORA CITY HALL

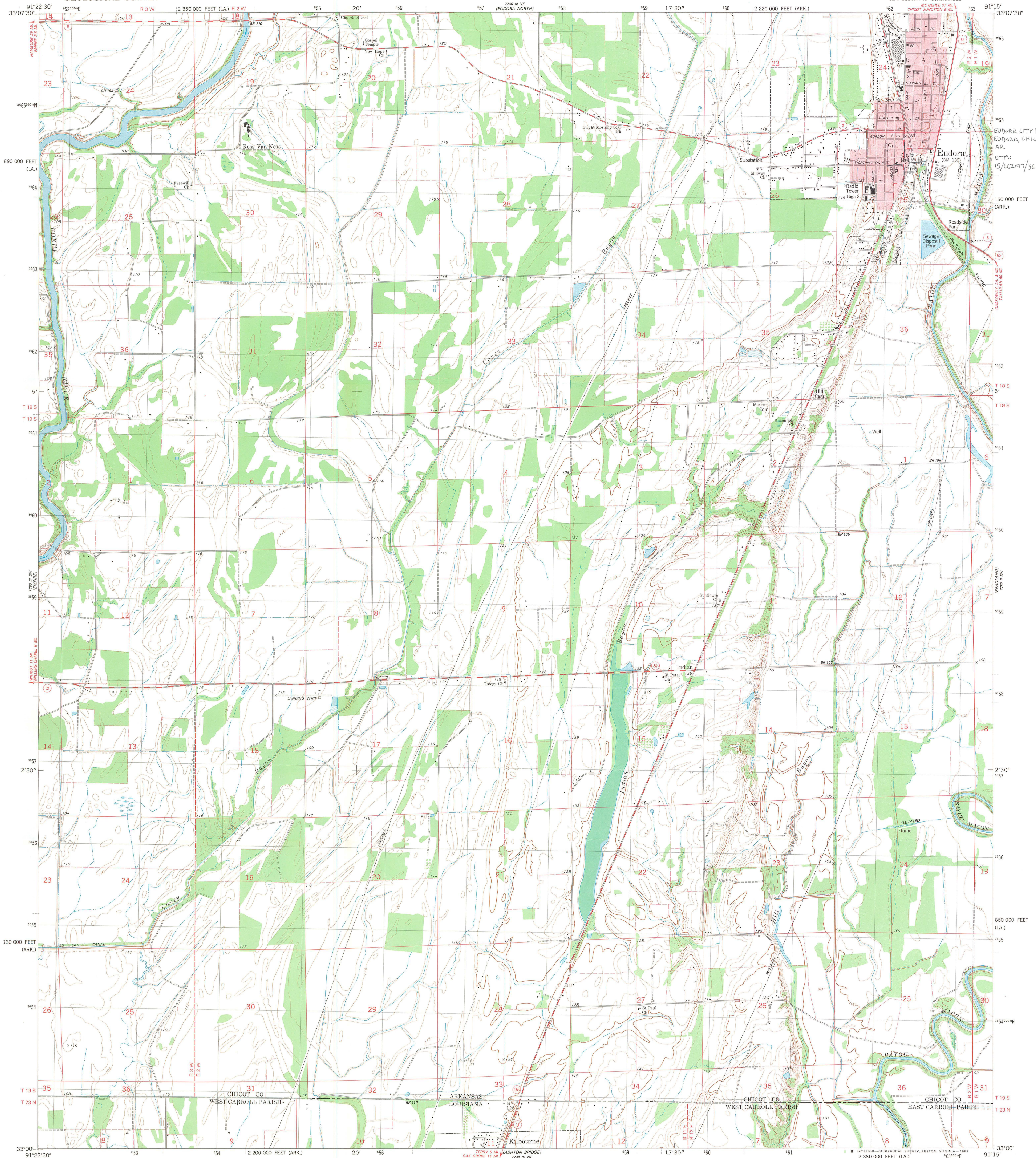
CHicot COUNTY, AR

ELIZABETH JAMES

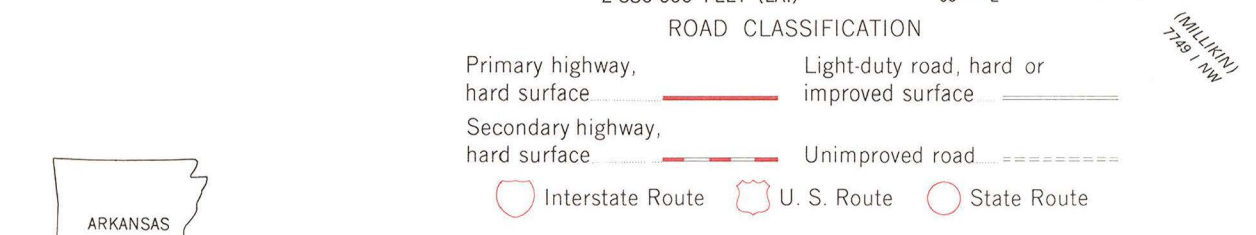
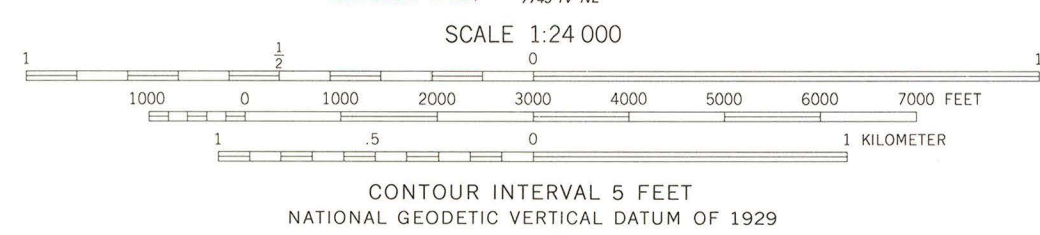
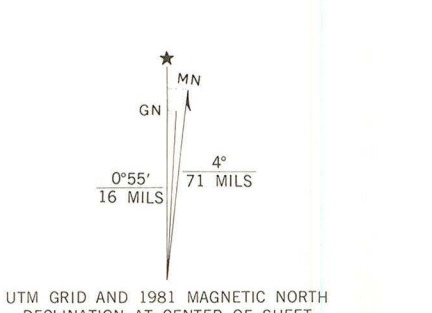
JULY 2005

ARKANSAS HISTORIC PRESERVATION PROGRAM, LITTLE ROCK, AR

EAST FACADE, LOOKING WEST



Mapped, edited, and published by the Geological Survey
Control by USGS and NOS/NOAA
Topography by photogrammetric methods from aerial photographs
taken 1975-76. Field checked 1978. Map edited 1981
Projection: Arkansas coordinate system, south zone
(Lambert conformal conic)
10,000-foot grid ticks based on Arkansas coordinate system,
south zone and Louisiana coordinate system, north zone
1000-meter Universal Transverse Mercator grid, zone 15
1927 North American Datum
To place on the predicted North American Datum 1983
move the projection lines 11 meters south and
11 meters east as shown by dashed corner ticks
Red tint indicates area in which only landmark buildings are shown
Fine red dashed lines indicate selected fence and field lines where
generally visible on aerial photographs. This information is unchecked



EUDORA SOUTH, ARK.-LA.
SE/4 EUDORA 15' QUADRANGLE
N3300-W91157.5
1981
DMA 7750 III SE-SERIES V884



The Department of Arkansas Heritage

Mike Huckabee, Governor
Cathie Matthews, Director

Arkansas Arts Council

Arkansas Natural Heritage
Commission

Delta Cultural Center

Historic Arkansas Museum

Mosaic Templars
Cultural Center

Old State House Museum



Arkansas Historic Preservation Program

1500 Tower Building
323 Center Street

Little Rock, AR 72201

(501) 324-9880

fax: (501) 324-9184

tdd: (501) 324-9811

e-mail: info@arkansaspreservation.org

website:

www.arkansaspreservation.org

August 2, 2006

Dr. Janet Matthews
Chief of Registration
United States Department of the Interior
National Register of Historic Places
National Park Service
8th Floor
1201 Eye Street, NW
Washington, DC 20005



RE: Eudora City Hall – Eudora, Chicot County, Arkansas

Dear Dr. Matthews:

We are enclosing for your review the above-referenced nomination. The Arkansas Historic Preservation Program has complied with all applicable nominating procedures and notification requirements in the nomination process.

If you need further information, please call Ralph S. Wilcox of my staff at (501) 324-9787. Thank you for your cooperation in this matter.

Sincerely,

Cathie Matthews
State Historic Preservation Officer

CM:rsw

Enclosure

An Equal Opportunity Employer

