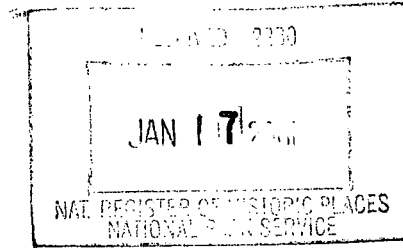


United States Department of the Interior
National Park Service



National Register of Historic Places
Registration Form

This form is for use in nominating or requesting determinations for individual properties and districts. See instructions in *How to Complete the National Register of Historic Places Registration Form* (National Register Bulletin 16A). Complete each item by marking "x" in the appropriate box or by entering the information requested. If an item does not apply to the property being documented, enter "N/A" for "not applicable." For functions, architectural classification, materials, and areas of significance, enter only categories and subcategories from the instructions. Place additional entries and narrative items on continuation sheets (NPS Form 10-900a). Use a typewriter, word processor, or computer, to complete all items.

1. Name of Property

historic name Nutt-Trussell Building
other names/site number _____

2. Location

street & number 202 North Main Street not for publication
city or town Fordyce vicinity
state Arkansas code AR county Dallas code 039 zip code 71742

3. State/Federal Agency Certification

As the designated authority under the National Historic Preservation Act, as amended, I hereby certify that this nomination
request for determination of eligibility meets the documentation standards for registering properties in the National Register of Historic
Places and meets the procedural and professional requirements set for in 36 CFR Part 60. In my opinion, the property meets
does not meet the National Register criteria. I recommend that this property be considered significant
 nationally statewide locally (See continuation sheet for additional comments.)
Catherine Hattis 1/02/01
Signature of certifying official/Title Date
Arkansas Historic Preservation Program
State or Federal agency and bureau

In my opinion, the property meets does not meet the National Register criteria. See Continuation sheet for additional
comments.)

Signature of certifying official/Title Date

State or Federal agency and bureau

4. National Park Service Certification

I hereby certify that the property is:
 entered in the National Register.
 See continuation sheet
 determined eligible for the
National Register.
 See continuation sheet
 determined not eligible for the
National Register.
 removed from the National
Register.
 other, (explain:) _____

Signature of the Keeper Harah D. Pope Date of Action 3/04/01

Njutt-Trussell Building
Name of Property

Dallas County, Arkansas
County and State

5. Classification

Ownership of Property
(Check as many boxes as apply)

Category of Property
(Check only one box)

Number of Resources within Property
(Do not include previously listed resources in count.)

- private
- public-local
- public-State
- public-Federal

- building(s)
- district
- site
- structure
- object

Contributing	Noncontributing	
1		buildings
		sites
		structures
		objects
1	0	Total

Name of related multiple property listing
(Enter "N/A" if property is not part of a multiple property listing.)

N/A

Number of Contributing resources previously listed in the National Register

N/A

6. Function or Use

Historic Functions
(Enter categories from instructions)

Commerce/Trade: department store

Social: meeting hall

Current Functions
(Enter categories from instructions)

Vacant/Not In Use

7. Description

Architectural Classification
(Enter categories from instructions)

Other: 19th Century Commercial Style

Materials
(Enter categories from instructions)

foundation BRICK

walls BRICK

STUCCO

roof ASPHALT

other _____

Narrative Description

(Describe the historic and current condition of the property on one or more continuation sheets.)

SEE CONT. SHEETS

United States Department of the Interior
National Park Service

National Register of Historic Places

Continuation Sheet

Section number 7 Page 1

SUMMARY

Located on Main Street in downtown Fordyce the Nutt-Trussell building was constructed in 1883 and it was the first two-story brick structure erected in the developing railroad town of Fordyce, Arkansas. This nineteenth century two-story brick masonry commercial building is designed in a simple rectangular plan that was very common and popular for this time period. The building is crowned on the west and south elevations by a small stucco covered brick parapet. Since its construction in 1883, the brick veneer was covered circa 1920 with stucco and the decorative cornice was also removed. The building was constructed at the same time as the neighboring building as a whole unit; however, the sections were sold to different owners and have served different functions throughout their years of operation.

ELABORATION

The Nutt-Trussell Building located on Main Street in Fordyce, Arkansas, is a two-story, brick commercial building that was sheathed in stucco circa 1920. The built-up asphalt roof and brick walls rest on a continuous brick foundation.

West Elevation

The façade of the building fronts west and is fenestrated with a recessed single door entryway that is flanked by single pane glass storefront windows. The first floor windows are intact, but have been covered in an attempt to protect the windows from vandals. The second floor of the building is fenestrated by four symmetrically placed two-over-two windows and is crowned by a parapet. The two-over-two windows on the second story are unadorned except for a few remaining panes of snowflake glass that were installed for privacy on the second floor, which served as the town's Masonic lodge in the late 1800s. The earliest photograph available (1908) shows an ornamental cornice on the building that does not appear in the 1930 photograph.

South Elevation

The south side elevation is fenestrated with five two-over-two windows on the second floor and one small round stationary window located to the east side of the third double-hung window. There are six supporting pilasters that are evenly spaced along this elevation running from the ground to the parapet adding a small amount of detail to the building. The first floor of the south elevation features a double door side entrance. One window, one door, and one small round window have been infilled (date unknown) with brick and stucco. Another window has been covered with wood but remains intact.

East Elevation

The rear of the building faces east and is fenestrated by two centrally located one-over-one double-hung windows on the second story. The first story wall is devoid of any fenestration or ornamentation. There was

United States Department of the Interior
National Park Service

National Register of Historic Places Continuation Sheet

Section number 7 Page 2

a building attached to the rear of the structure, but it has been removed exposing the original brick veneer of the building.

North Elevation

The north side of the building shares a party wall with the neighboring store building, which was constructed at the same time.

Interior

The interior has had virtually no alterations. The original wood floor is still intact on the first floor. The second-floor of the building can be accessed by the main stairway at the rear of the building's interior, or by a narrow staircase at the front of the building that leads to the second floor through a trap door. The second story of the building remains pristine and displays the checkerboard tile floor located in the room that once served as the Masonic hall.

Integrity

The Nutt-Trussell building in Fordyce has been altered with the application of stucco, removal of cornice and infill of some windows; however, the addition of the stucco and the removal of the cornice both took place before 1930 making both historic alterations. The second floor of the building still retains most of its original features as no windows have been altered on the second story. The building maintains integrity of setting, location, feeling, and design, as it is located on Main Street near the old railroad tracks in downtown Fordyce.

8. Statement of Significance

Applicable National Register Criteria

(Mark "x" in one or more boxes for the criteria qualifying the property for National Register listing.)

- Criteria A, B, C, D with checkboxes and descriptions.

Criteria Considerations

(Mark "x" in all the boxes that apply.)

Property is:

- Criteria A through G with checkboxes and descriptions.

Levels of Significance (local, state, national)

Local

Areas of Significance (Enter categories from instructions)

Social History

Commerce

Architecture

Period of Significance

1883-1950

Significant Dates

1883

Ca. 1920

Significant Person (Complete if Criterion B is marked)

N/A

Cultural Affiliation (Complete if Criterion D is marked)

N/A

Architect/Builder

Unknown

Narrative Statement of Significance

(Explain the significance of the property on one or more continuation sheets.)

SEE CONT. SHEETS

9. Major Bibliographical References

Bibliography

(Cite the books, articles, and other sources used in preparing this form on one or more continuation sheets.)

SEE CONT. SHEET

Previous documentation on file (NPS):

- Criteria for previous documentation on file (NPS).

Primary location of additional data:

- Criteria for primary location of additional data.

Name of repository:

United States Department of the Interior
National Park Service

National Register of Historic Places Continuation Sheet

Section number 8 Page 1

SUMMARY

The Nutt-Trussell Building in downtown Fordyce, Arkansas, is being nominated to the National Register of Historic Places with **local significance** under **Criterion A** for the role it played in the economic development of Fordyce. It is also being nominated under **Criterion C** as the best extant and oldest two story 19th Century commercial building in Fordyce, Arkansas.

ELABORATION

With the arrival of the main line Cotton Belt Railroad in 1882, Fordyce was transformed into a hub of commerce. New people and new money arrived quickly and businesses were hastily constructed along the railroad tracks. Substantial brick buildings were soon constructed along Chief Street, which was later changed to Main Street. The Nutt-Trussell Building was the first two story brick building constructed in Fordyce and it was built to house Nutt & Barnes Company General Merchandise. This was the first important building in Fordyce and it signaled the prosperity brought about by the arrival of the railroads that played an influential role in the growth and development of Fordyce and Dallas County.

The Nutt Building (later known as the Nutt-Trussell Building) was constructed in 1883 and appeared on the tax records in 1884. Robert Nutt operated his business in this location until his death in 1892. According to a family history Robert Nutt died at the young age of forty. Nutt was wealthy and owned large tracts of land, as well as his prosperous retail business on Main Street. After Nutt's death, his widow, Julia, supposedly cut her hair very short and did not leave the house for over a year after he died. She neglected all business and lost all of the accumulated wealth that her husband had amassed. This is supported by the Dallas County tax records. In 1894 and 1895, the George Taylor Commission Company paid taxes on this building and from 1896 until 1916, the Bank of Fordyce paid the taxes on the building. During a portion of this time the building served as the Bank of Fordyce.

The second story of the building has a separate history of its own. On December 19, 1885, E. M. Lodge No. 363 officially occupied their new hall on the second floor of the Nutt Building. Lodge No. 363 met here almost continuously until the organization built a new building in 1960. The meeting hall still has many of its original furnishings such as the platforms located around the room, the stage, remnants of the checkerboard floor, and a few remaining panes of snowflake glass in the windows.

On May 13, 1897, The Southwestern Telegraph and Telephone Company was given a franchise to operate in Fordyce. In 1900, R. T. Holderness, Charles McKee, H. T. Chandler and B. F. Edwards organized the Home Telephone Company and built the first telephone exchange in the city by 1903, it was necessary to rebuild the entire system. The office was moved from the rear of Holderness Drug Store to the second story of the

United States Department of the Interior
National Park Service

National Register of Historic Places Continuation Sheet

Section number 8 Page 2

Nutt Building and a new switchboard of 150 line capacity was installed. By 1908, the Home Telephone Company needed even more space and moved to the newly constructed McKee Building (the building currently occupied and owned by the Dallas County Museum), where the telephone company remained until 1960. The Home Telephone Company is a core company of ALLTEL Corporation.

In 1916, the Nutt Building was purchased by L. L. Trussell to house his new business, "The People's Store". This was a simple business that catered to its customers with a line of general merchandise of good quality and affordable prices. The store routinely operated long hours each day with the exception of Sunday. During the cold winter days Mr. Trussell was known to open his store as early as 5:30 a.m. selling gloves, boots and hats to accommodate the early shift of workers en route to the Fordyce Lumber Company. The People's Store was an important fixture in the Fordyce economy for many years until it closed in the early sixties. Several businesses operated in this building after the People's Store closed, but they were short lived and the building was eventually boarded up and abandoned in the early 1980s. L. L. Trussell and later his descendents, held title to the building until it was deeded to the Dallas County museum in the year 2000.

Dr. Thomas Trussell, the grandson of L. L. Trussell, gave the Nutt-Trussell Building to the Dallas County Museum in August 2000. The museum plans to restore the Masonic Hall, use the first floor for large static agricultural displays, and use the remainder of the building for storage.

Significance

The Nutt-Trussell building is being nominated to the National Register of Historic Places with **local significance** under **Criterion A** for its direct association with the economic development of Fordyce, Arkansas, as it housed significant businesses such as Nutt & Barnes Company General Merchandise, the Home Telephone Company, and the "People's Store" all of which were important to Fordyce's economy. The building also contributed to the social enrichment of Fordyce as it housed the E. M. Lodge 363 from 1885 through 1960. It is also being nominated under **Criterion C** as the best and oldest example of a two story 19th Century commercial building in Fordyce.

UNITED STATES DEPARTMENT OF THE INTERIOR
NATIONAL PARK SERVICE

NATIONAL REGISTER OF HISTORIC PLACES
EVALUATION/RETURN SHEET

REQUESTED ACTION: NOMINATION

PROPERTY NAME: Nutt--Trussell Building

MULTIPLE NAME:

STATE & COUNTY: ARKANSAS, Dallas

DATE RECEIVED: 1/17/01 DATE OF PENDING LIST: 1/31/01
DATE OF 16TH DAY: 2/16/01 DATE OF 45TH DAY: 3/04/01
DATE OF WEEKLY LIST:

REFERENCE NUMBER: 01000110

REASONS FOR REVIEW:

APPEAL: N DATA PROBLEM: N LANDSCAPE: N LESS THAN 50 YEARS: N
OTHER: N PDIL: N PERIOD: N PROGRAM UNAPPROVED: N
REQUEST: N SAMPLE: N SLR DRAFT: Y NATIONAL: N

COMMENT WAIVER: N

ACCEPT RETURN REJECT 3/04/01 DATE

ABSTRACT/SUMMARY COMMENTS:

The Nutt-Trussell Building is significant under National Register Criterion A and C for Architecture, Commerce, and Social History. It's distinctive in the small community as the first two-story masonry building that marked a commercial advancement for the developing railroad town. Alterations from the 1920s impact the building's ability to convey significance as an 1883 building, but not enough to render it ineligible for listing.

RECOM./CRITERIA A, C

REVIEWER Sarah Pope DISCIPLINE Historian

TELEPHONE 343-9534 DATE 03/04/01

DOCUMENTATION see attached comments Y/N see attached SLR Y/N



1. Nutt-Trussell Building

2. Dallas Co., AR

3. Zac Cothren

4. Oct. 2000

5. Arkansas Historic Preservation Program

6. West facade, looking east.

7. #1



1. Nutt-Trussell Building
2. Dallas Co., AR
3. Zae Cothren
4. Oct. 2000
5. Arkansas Historic Preservation Program
6. West facade, looking east.
7. #2



SAVE UP TO

← SIDE DOOR →

LAKE EG
MAY 1968

DOOR

1. Nutt = Trussell Building

2. Dallas Co., AR

3. Zae Cothren

4. Oct. 2000

5. Arkansas Historic Preservation Program

6. South elevation, looking north.

7. #3



1. Nutt-Trussell Building

2. Dallas Co., AR.

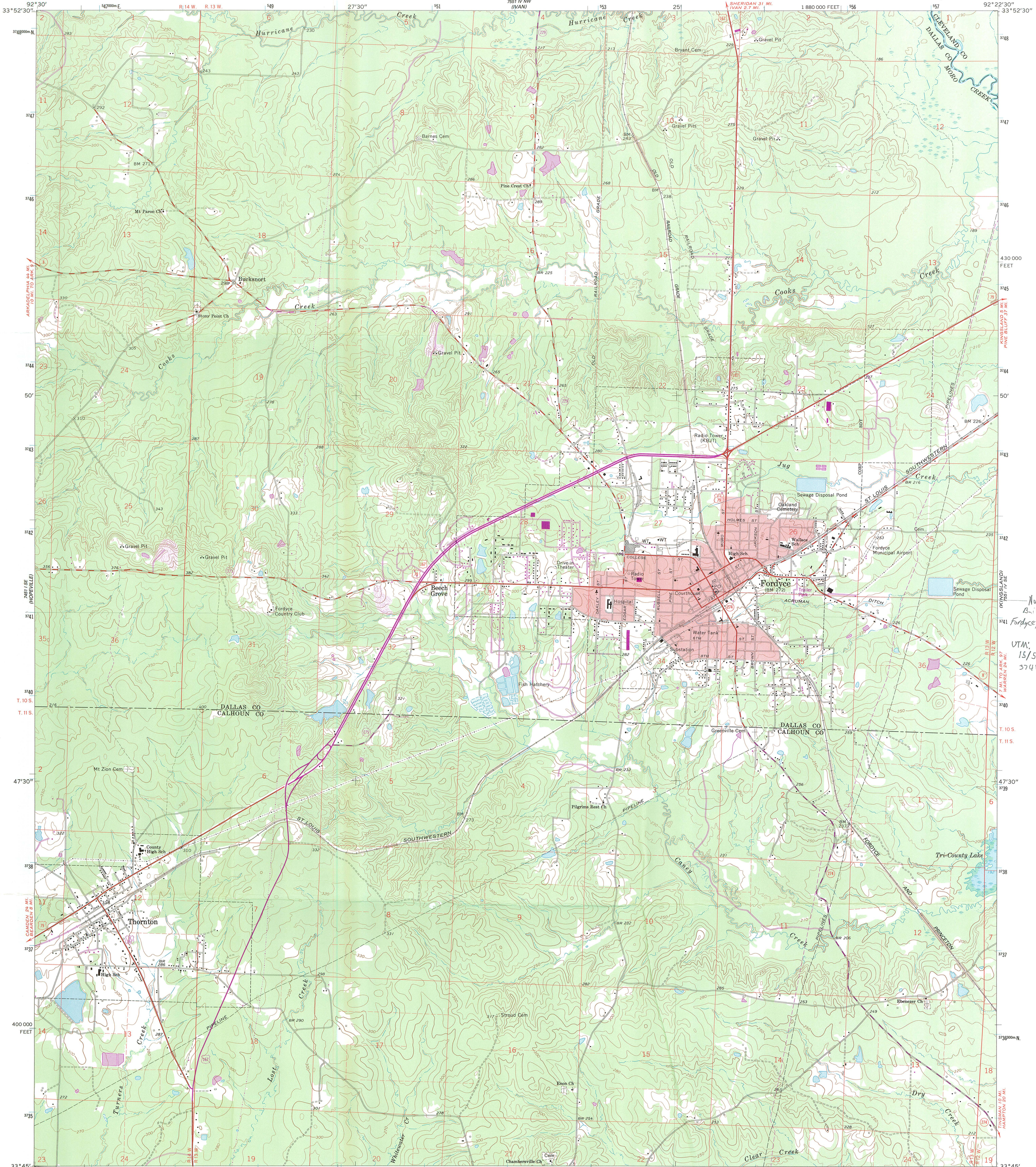
3. Zoe Cothren

4. Oct. 2000

5. Arkansas Historic Preservation Program

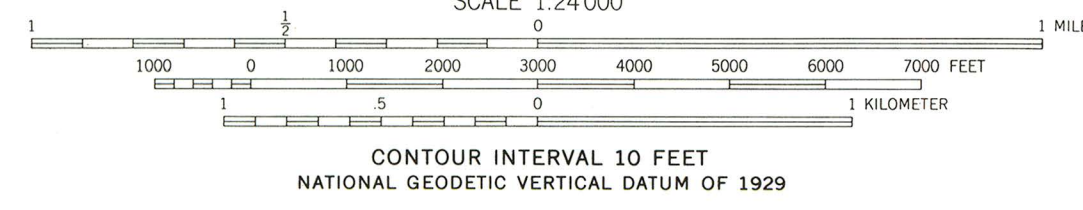
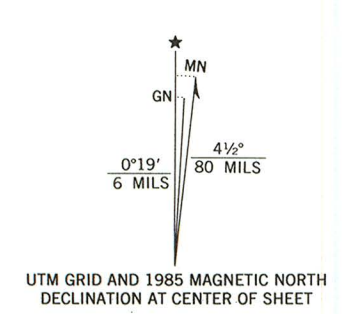
6. East elevation, looking west.

7. #4



Nutt-Trussell
Building,
Fordyce, Dallas Co.,
AR.
UTM:
15/554470/
3741290

Mapped, edited, and published by the Geological Survey
Control by USGS and USC&GS
Topography by photogrammetric methods from aerial
photographs taken 1965. Field checked 1966
Polyconic projection. 1927 North American datum
10,000-foot grid based on Arkansas coordinate system, south zone
1000-meter Universal Transverse Mercator grid ticks,
zone 15, shown in blue
Red tint indicates area in which only landmark buildings are shown
Fine red dashed lines indicate selected fence and field lines where
generally visible on aerial photographs. This information is unchecked
To place on the predicted North American Datum 1983,
move the projection lines 9 meters south and
14 meters east as shown by dashed corner ticks
Revisions shown in purple compiled from aerial photographs taken 1984 and
other sources. This information not field checked. Map edited 1985



ROAD CLASSIFICATION

Heavy-duty	Light-duty
Medium-duty	Unimproved dirt
U.S. Route	Slate Route

THIS MAP COMPLIES WITH NATIONAL MAP ACCURACY STANDARDS
FOR SALE BY U.S. GEOLOGICAL SURVEY, DENVER, COLORADO 80225, OR RESTON, VIRGINIA 22092
AND ARKANSAS GEOLOGICAL COMMISSION, LITTLE ROCK, ARKANSAS 72204
A FOLDER DESCRIBING TOPOGRAPHIC MAPS AND SYMBOLS IS AVAILABLE ON REQUEST

FORDYCE, ARK.
33092-G4-TF-024
1966
PHOTOREVISED 1985
DMA 7551 IV SW-SERIES V884



The Department of Arkansas Heritage

**WE LOVE TO TELL
THE STORY.**

Mike Huckabee, Governor
Cathie Matthews, Director

Arkansas Arts Council



Arkansas Natural Heritage
Commission



Arkansas Territorial Restoration



Delta Cultural Center



Old State House Museum

December 29, 2000

Carol D. Shull
Chief of Registration
United States Department of the Interior
National Register of Historic Places
National Park Service
1849 C St. NW
Washington, D.C. 20240

RE: Nutt-Trussell Building, Fordyce, Dallas County.

Dear Carol:

We are enclosing for your review the nomination of the above-referenced property. The Arkansas Historic Preservation Program has complied with all applicable nominating procedures and notification requirements in the nomination process.

Thank you for your consideration in this matter.

Sincerely,

Cathie Matthews,
State Historic Preservation Officer

CM:zc

Enclosures



Arkansas Historic Preservation Program

1500 Tower Building
323 Center Street
Little Rock, AR 72201
(501)324-9880

fax: (501)324-9184
tdd: (501)324-9811

e-mail:
info@arkansaspreservation.org
website:
www.arkansaspreservation.org

An Equal Opportunity Employer

