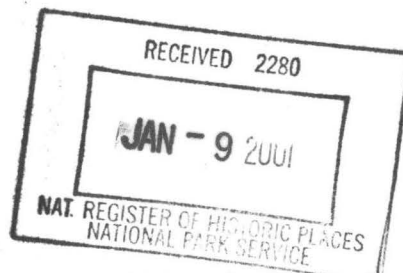


United States Department of the Interior  
National Park Service

National Register of Historic Places  
Registration Form



This form is for use in nominating or requesting determinations for individual properties and districts. See instructions in *How to Complete the National Register of Historic Places Registration Form* (National Register Bulletin 16A). Complete each item by marking "x" in the appropriate box or by entering the information requested. If an item does not apply to the property being documented, enter "N/A" for "not applicable." For functions, architectural classification, materials, and areas of significance, enter only categories and subcategories from the instructions. Place additional entries and narrative items on continuation sheets (NPS Form 10-900a). Use a typewriter, word processor, or computer, to complete all items.

1. Name of Property

historic name Walter Patterson Filling Station  
other names/site number Cities Service Station

2. Location

street & number Hwy 65 between Griggs and Court Streets  not for publication  
city or town Clinton  vicinity  
state Arkansas code AR county Van Buren code 141 zip code 72031

3. State/Federal Agency Certification

As the designated authority under the National Historic Preservation Act, as amended, I hereby certify that this  nomination   
request for determination of eligibility meets the documentation standards for registering properties in the National Register of Historic  
Places and meets the procedural and professional requirements set for in 36 CFR Part 60. In my opinion, the property  meets   
does not meet the National Register criteria. I recommend that this property be considered significant  
 nationally  statewide  locally. (See continuation sheet for additional comments.)  
Adrian Matthews 1/02/01  
Signature of certifying official/Title Date  
Arkansas Historic Preservation Program  
State or Federal agency and bureau

In my opinion, the property  meets  does not meet the National Register criteria. ( See Continuation sheet for additional  
comments.)  
\_\_\_\_\_  
Signature of certifying official/Title Date  
\_\_\_\_\_  
State or Federal agency and bureau

4. National Park Service Certification

I hereby certify that the property is:  
 entered in the National Register.  
 See continuation sheet  
 determined eligible for the  
National Register.  
 See continuation sheet  
 determined not eligible for the  
National Register.  
 removed from the National  
Register.  
 other, (explain:) \_\_\_\_\_  
\_\_\_\_\_  
\_\_\_\_\_

Edson H. Beall 2/9/01  
Signature of the Keeper Date of Action

**5. Classification**

**Ownership of Property**  
(Check as many boxes as apply)

- private
- public-local
- public-State
- public-Federal

**Category of Property**  
(Check only one box)

- building(s)
- district
- site
- structure
- object

**Number of Resources within Property**  
(Do not include previously listed resources in count.)

Contributing	Noncontributing	
1		buildings
		sites
1		structures
1		objects
3	0	Total

**Name of related multiple property listing**  
(Enter "N/A" if property is not part of a multiple property listing.)

Arkansas Highway and Transportation Era Architecture, 1910-1965.

**Number of Contributing resources previously listed in the National Register**

N/A

**6. Function or Use**

**Historic Functions**

(Enter categories from instructions)

COMMERCE/TRADE: Specialty Store

TRANSPORTATION: Road-related (vehicular)

**Current Functions**

(Enter categories from instructions)

VACANT/NOT IN USE

**7. Description**

**Architectural Classification**

(Enter categories from instructions)

LATE 19<sup>TH</sup> AND 20<sup>TH</sup> CENTURY REVIVALS: Tudor  
or English Revival

**Materials**

(Enter categories from instructions)

foundation CONCRETE

walls BRICK

roof ASPHALT

other

**Narrative Description**

(Describe the historic and current condition of the property on one or more continuation sheets.)

SEE CONTINUATION SHEETS.

United States Department of the Interior  
National Park Service

## National Register of Historic Places Continuation Sheet

Section number 7 Page 1

### SUMMARY

The Walter Patterson Filling Station (also known as Cities Service Station), located on U.S. Highway 65 Between Griggs and Court Streets, was built in 1936 and it is the only extant 1930s gas station in Clinton, Arkansas. It is the best example of an English Revival building - as applied to an automobile era building - in Clinton.

### ELABORATION

Located on a piece of property bounded to the south by U.S. Highway 65; to the east by Griggs Street; and to the west by Court Street, the Walter Patterson Filling Station is an excellent example of English Revival architecture. The rectangular-shaped service station is constructed out of red bricks and rests upon a continuous concrete foundation. Photographs show that by 1946 the brick building was painted white. However, presently the building's red bricks are exposed. The exact date of paint removal is unknown but it is possible that it was removed in the 1970s when the building was remodeled. The building supports an asphalt shingle, intersecting gable roof, accented by a brick chimney. In the apex of each of the three gables are an oculus with a metal center, surrounded by brick with exposed ends. A historic light fixture, located in the apex of the front gable, lends to the ambience of the days when this structure served as a service station.

### Historic Resources

Located within the selected boundaries are two contributing resources - a covered grease pit and a concrete pad. The grease pit is covered by a gable roof supported by metal poles that rests on a continuous brick wall approximately 3 1/2 feet tall. Located directly in front of the gas station is the concrete pad that once supported the historic gas pumps. Both of these historic resources are contributing and are integral features associated with the service station.

### South/Front Elevation

The south elevation fronts U. S. Hwy 65 and it is through this entrance that customers could access the store. Two, large, stationary, picture windows, supported by concrete sills flank the front entryway. The defining feature of the front elevation is the steeply pitched intersecting front gable, one of the distinguishing characteristics of English Revival architecture, accented by an historic light fixture.

United States Department of the Interior  
National Park Service

## National Register of Historic Places Continuation Sheet

Section number 7 Page 2

---

### East/Side Elevation

The east elevation is fenestrated with one window and door. Supported by a concrete sill, an opening for a stationary picture window located on the west side of the east elevation, is presently infilled with wood, as is the door sited east of the window.

### North/Rear Elevation

Three, unevenly spaced, small windows adorn the north elevation. Each window is supported by a concrete sill and displays three vertical muntins. A red brick chimney pierces the gable roof and is best seen from this elevation.

### West/Side Elevation

Identical to the east elevation, the west elevation is fenestrated with one window and door; however, the location of the window and door is opposite to that on the east elevation. Both the door and the window are infilled with wood.

### Integrity

The Walter Patterson Filling Station possesses a strong sense of integrity. There have been no structural alterations to the building throughout the years, except for the infill of two doors and two windows. Cosmetic alterations include the removal of the white paint (date unknown) and the removal of the gas pumps (date unknown). In 1976 the building's electrical system was renovated and an electric water heater was installed. The station maintains its integrity of location and setting, as it is located on a Highway 65 just south of downtown Clinton, Arkansas. The building beautifully displays the workmanship, design features, and materials employed by an architect (unknown). The physical features of this building such as steeply pitched gable room and historic light fixtures convey the "feeling" or historic character of this building. Presently this building is vacant but both the owner and property manager are concerned about the future of the Walter Patterson Filling Station. The interior of the building is very plain with no lavish adornments.

**8. Statement of Significance**

**Applicable National Register Criteria**

(Mark "x" in one or more boxes for the criteria qualifying the property for National Register listing.)

- A** Property is associated with events that have made a significant contribution to the broad patterns of our history.
- B** Property is associated with the lives of persons significant in our past.
- C** Property embodies the distinctive characteristics of a type, period, or method of construction or represents the work of a master, or possesses high artistic values, or represents a significant and distinguishable entity whose components lack individual distinction.
- D** Property has yielded, or is likely to yield, information important in prehistory or history.

**Criteria Considerations**

(Mark "x" in all the boxes that apply.)

Property is:

- A** owned by a religious institution or used for religious purposes.
- B** removed from its original location.
- C** moved from its original location.
- D** a cemetery.
- E** a reconstructed building, object, or structure.
- F** a commemorative property
- G** less than 50 years of age or achieved significance within the past 50 years.

**Levels of Significance** (local, state, national)

LOCAL

**Areas of Significance** (Enter categories from instructions)

ARCHITECTURE  
TRANSPORTATION

**Period of Significance**

1936-1950

**Significant Dates**

1936

**Significant Person** (Complete if Criterion B is marked)

N/A

**Cultural Affiliation** (Complete if Criterion D is marked)

N/A

**Architect/Builder**

Unknown

**Narrative Statement of Significance**

(Explain the significance of the property on one or more continuation sheets.)

**SEE CONTINUATION SHEETS.**

**9. Major Bibliographical References**

**Bibliography**

(Cite the books, articles, and other sources used in preparing this form on one or more continuation sheets.)

**Previous documentation on file (NPS):**

- preliminary determination of individual listing (36 CFR 67) has been requested
- previously listed in the National Register
- Previously determined eligible by the National Register
- designated a National Historic Landmark

**Primary location of additional data:**

- State Historic Preservation Office
- Other State Agency
- Federal Agency
- Local Government
- University
- Other

**United States Department of the Interior**  
National Park Service

## **National Register of Historic Places**

### **Continuation Sheet**

Section number 8 Page 1

---

#### **SUMMARY**

The Walter Patterson Filling Station (known to many as the Cities Service Station) is being nominated to the National Register of Historic Places with local significance under Criterion C for its English Revival style. Constructed in 1936, this building served Clinton as a gas station through June 1962. This property is significant for its association with the development of highway travel in Arkansas and therefore is also being nominated under Criterion A for its association with the development of Arkansas highway culture, which is documented extensively in the multiple property listing. The Walter Patterson Filling Station is being submitted to the National Register of Historic Places under the multiple property listing "Arkansas Highway and Transportation Era Architecture, 1910-1965" in conjunction with the historic context "Arkansas Highway History and Architecture, 1910-1965."

#### **ELABORATION**

The town of Clinton serves as the county seat for Van Buren County, which was established in 1833. Clinton, like all towns in America, used a horse and carriage as the primary means of travel until the advent of the automobile in the late 1800s. Research has yet to reveal when the automobile first came to Clinton, Arkansas, probably between 1903 and 1910, regardless, it is accurate to say that by the 1920s automobiles were changing the landscape of Clinton, Arkansas, as gas stations became a part of the built environment.

According to Jean Louise, a historical consultant, "After WWI, assembly lines began producing inexpensive cars at a rapid rate, highway construction boomed and the market for automobile petroleum exploded." During the 1920s many oil companies began refining their marketing strategies, which included adopting distinctive signs and gas station designs. The most prevalent style for gas stations in the 1920s was the domestic style - gas stations that resembled small houses with hipped or gabled roofs - these designs blended nicely with their residential surroundings. These gas stations could be built by the local craftsman from readily available materials from the local lumberyard and for the motorist passing by these domestic designs triggered positive associations such as friendliness, comfort, and security. Therefore, it was in this "domestic style" that the Walter Patterson Filling Station was designed.

United States Department of the Interior  
National Park Service

## National Register of Historic Places Continuation Sheet

Section number 8 Page 2

### Walter Patterson Filling Station

Located along Highway 65 the Walter Patterson Filling Station was one of the service stations constructed in Clinton, Arkansas, during the 1930s. It was constructed in 1936 for owners Anna and Walter Patterson. When it was built it was designed in the English Revival style which was first popularized by Pure Oil Company. Abstract research reveals that Anna and Walter Patterson signed a lease with Louisiana Oil Refining Corporation (a subsidiary of Cities Services Corporation) in 1936. The terms of this lease specified that it would endure for ten years for a sum of \$30.00 per month with an additional rental of one cent per gallon on all gasoline sold through the station during each month in excess of 3,000 gallons.

Like many families during the Great Depression the Pattersons struggled financially. Nearly a year after the gas station was constructed the First Federal Savings and Loan Association of Little Rock, Arkansas, took a lien on the property. The abstract reveals that the property changed hands several times from 1937 to 1946. However, on 8 May 1946 M. V. and Dorothy Hatchett purchased the property from Lester Page for \$1,150.00.

After purchasing the gas station, the Hatchetts renewed their petroleum lease (which was originally with Louisiana Oil Refining Corporation, now Arkansas Fuel and Oil Corporation, a subsidiary of Cities Services). The Hatchetts continued their lease with Arkansas Fuel and Oil Corporation, which marketed under the Cities Services sign and under the Hatchetts' ownership. Patterson's filling station became known as the Cities Services Gas Station and the Hatchetts continued to sell gas until the closing of the station in 1962. The quaint little English Revival gas station served the residents of Clinton for approximately twenty-five years. Since that time the building has remained in the ownership of Mrs. Dorothy Hatchett and has served as a location for several businesses. In the 1980s the underground gas tanks were removed from the site due to the environmental hazards they posed.

United States Department of the Interior  
National Park Service

## National Register of Historic Places Continuation Sheet

Section number 8 Page 3

---

### Significance

The Walter Patterson Filling Station (later known as the Cities Service Station) is the only English Revival service station in Clinton, Arkansas. Its architecture reflects the ideals of the 1920s and 1930s, an era when filling stations were designed to harmonize with neighborhoods. The Walter Patterson Filling Station is being nominated to the National Register of Historic Places with local significance under Criterion C for its English Revival style and under Criterion A for its association with the development of highway travel in Arkansas, which is documented extensively in the multiple property listing. The service station is being submitted to the National Register of Historic Places under the multiple property listing "Arkansas Highway and Transportation Era Architecture, 1910-1965" in conjunction with the historic context "Arkansas Highway History and Architecture, 1910-1965."

Walter Patterson Filling Station  
Name of Property

Van Buren Co., Arkansas  
County and State

**United States Department of the Interior**  
National Park Service

## **National Register of Historic Places**

### **Continuation Sheet**

Section number   9   Page   1  

---

#### **Bibliography**

Abstract for the property of the Walter Patterson Filling Station (1844-1956).

Bly, Linda. Interview by Kara Mills on 16 October 2000.

Guarino, Jean Louise. "Domestic-style Gas Station Recalls of Early Days of the Automobile." *Historic Illinois*, 23 (October 2000): 3-6.

Jakle, John A. and Keith A. Sculle. *The Gas Station in America*. Baltimore: Johns Hopkins University Press, 1994.

Liebs, Chester H. *Main Street to Miracle Mile: American Roadside Architecture*. Boston: Little Brown and Company (Inc.), 1985.

Margolies, John. *Pump and Circumstance: Glory Days of the Gas Station*. Boston: Little Brown and Company (Inc.), 1993.

Walter Patterson Filling Station  
Name of Property

Van Buren Co., Arkansas  
County and State

- recorded by Historic American Buildings Survey  
# \_\_\_\_\_
- recorded by Historic American Engineering  
Record # \_\_\_\_\_

Name of repository: \_\_\_\_\_

**10. Geographical Data**

**Acreage of Property**    Less than one acre.

**UTM References**

(Place additional UTM references on a continuation sheet.)

1	<u>15</u> Zone	<u>549160</u> Easting	<u>3938560</u> Northing	3	_____	_____	_____
2	_____	_____	_____	4	_____	_____	_____

See continuation sheet

**Verbal Boundary Description**

(Describe the boundaries of the property on a continuation sheet.)

Beginning at the intersection of Griggs Street and Highway 65, thence running Northerly, and parallel with Griggs Street a distance of 75 feet; thence Westerly 105 feet, more or less, to the East side of Courts Street; thence Southerly, along the East side of Courts Street, a distance of 30 feet to the intersection of Courts Street and Highway 65; thence Southeasterly along the North side of Highway 65 a distance of 126 feet, more or less, to the point of beginning, all being part of the Northeast Quarter of the Southeast Quarter (NE ¼ of SE ¼ ), Section 15, Township 11, North, Range 14 West, Van Buren County, Arkansas.

**Boundary Justification**

(Explain why the boundaries were selected on a continuation sheet.)

The selected boundary encompasses three historic resources, all of which are associated with Walter Patterson Filling Station and retain their integrity of location, setting, design, feeling, workmanship, association, and materials.

**11. Form Prepared By**

name/title    Kara Mills

organization    Arkansas Historic Preservation Program    date    12/29/00

street & number    323 Center Street, 1500 Tower Building    telephone    (501) 324-9787

city or town    Little Rock    state    AR    zip code    72201

**Additional Documentation**

Submit the following items with the completed form:

**Continuation Sheets**

**Maps**

A **USGS map** (7.5 or 15 minute series) indicating the property's location

A **Sketch map** for historic districts and properties having large acreage or numerous resources.

**Photographs**

Representative **black and white photographs** of the property.

**Additional items**

(Check with the SHPO or FPO for any additional items.)

---

**Property Owner**

---

(Complete this item at the request of SHPO or FPO.)

name Dorothy Hatchett/Linda Bly  
street & number P. O. Box 223 telephone \_\_\_\_\_  
city or town Little Rock state AR zip code 72203

---

**Paperwork Reduction Act Statement:** This information is being collected for applications to the National Register of Historic Places to nominate properties for listing or determine eligibility for listing, to list properties, and to amend existing listing. Response to this request is required to obtain a benefit in accordance with the National Historic Preservation Act, as amended (16 U.S.C. 470 *et seq.*)

**Estimated Burden Statement:** Public reporting burden for this form is estimated to average 18.1 hours per response including time for reviewing instructions, gathering and maintaining data, and completing and reviewing the form. Direct comments regarding this burden estimate or any aspect of this form to the Chief, Administrative Services Division, National Park Service, P. O. Box 37127, Washington, DC 20013-7127; and the Office of Management and Budget, Paperwork Reductions Projects (1024-0018), Washington, DC 20303.

UNITED STATES DEPARTMENT OF THE INTERIOR  
NATIONAL PARK SERVICE

NATIONAL REGISTER OF HISTORIC PLACES  
EVALUATION/RETURN SHEET

REQUESTED ACTION: NOMINATION

PROPERTY NAME: Patterson, Walter, Filling Station

MULTIPLE NAME: Arkansas Highway History and Architecture MPS

STATE & COUNTY: ARKANSAS, Van Buren

DATE RECEIVED: 1/09/01      DATE OF PENDING LIST: 1/22/01  
DATE OF 16TH DAY: 2/08/01      DATE OF 45TH DAY: 2/24/01  
DATE OF WEEKLY LIST:

REFERENCE NUMBER: 01000074

REASONS FOR REVIEW:

APPEAL: N DATA PROBLEM: N LANDSCAPE: N LESS THAN 50 YEARS: N  
OTHER: N PDIL: N PERIOD: N PROGRAM UNAPPROVED: N  
REQUEST: N SAMPLE: N SLR DRAFT: N NATIONAL: N

COMMENT WAIVER: N

ACCEPT     RETURN     REJECT    2/9/01 DATE

ABSTRACT/SUMMARY COMMENTS:

Entered in the  
National Register

RECOM./CRITERIA \_\_\_\_\_

REVIEWER \_\_\_\_\_ DISCIPLINE \_\_\_\_\_

TELEPHONE \_\_\_\_\_ DATE \_\_\_\_\_

DOCUMENTATION see attached comments Y/N see attached SLR Y/N



1. Walter Patterson Filling Station
2. Van Buren County; Clinton, Arkansas
3. Kara Mills
4. 05/00
5. AHPP
6. Looking in a Northerly direction at the south facade



1. Walter Patterson Filling Station
2. Van Buren County, Clinton, Arkansas
3. Kara Mills
4. 05/00
5. AHPP
6. Looking West at the East elevation



1. Walter Patterson Filling Station
2. Van Buren County; Clinton, Arkansas
3. Kara Mills
4. 05100
5. AHPP
6. Facing North, looking down at the grease pit



1. Walter Patterson Filling Station
2. Van Buren County; Clinton, Arkansas
3. Kara Mills
4. 05/00
5. AHPP
6. Looking Northeast at the west elevation of the covered grease pit



1. Walter Patterson Filling Station
2. Van Buren County; Clinton, Arkansas
3. Kara Mills
4. 05/00
5. AHPP
6. Looking Northeast at the North & West elevations



1. Walter Patterson Filling Station
2. Van Buren County; Clinton, Arkansas
3. Kara Mills
4. 05/00
5. AHPP
6. Looking South at the North elevation



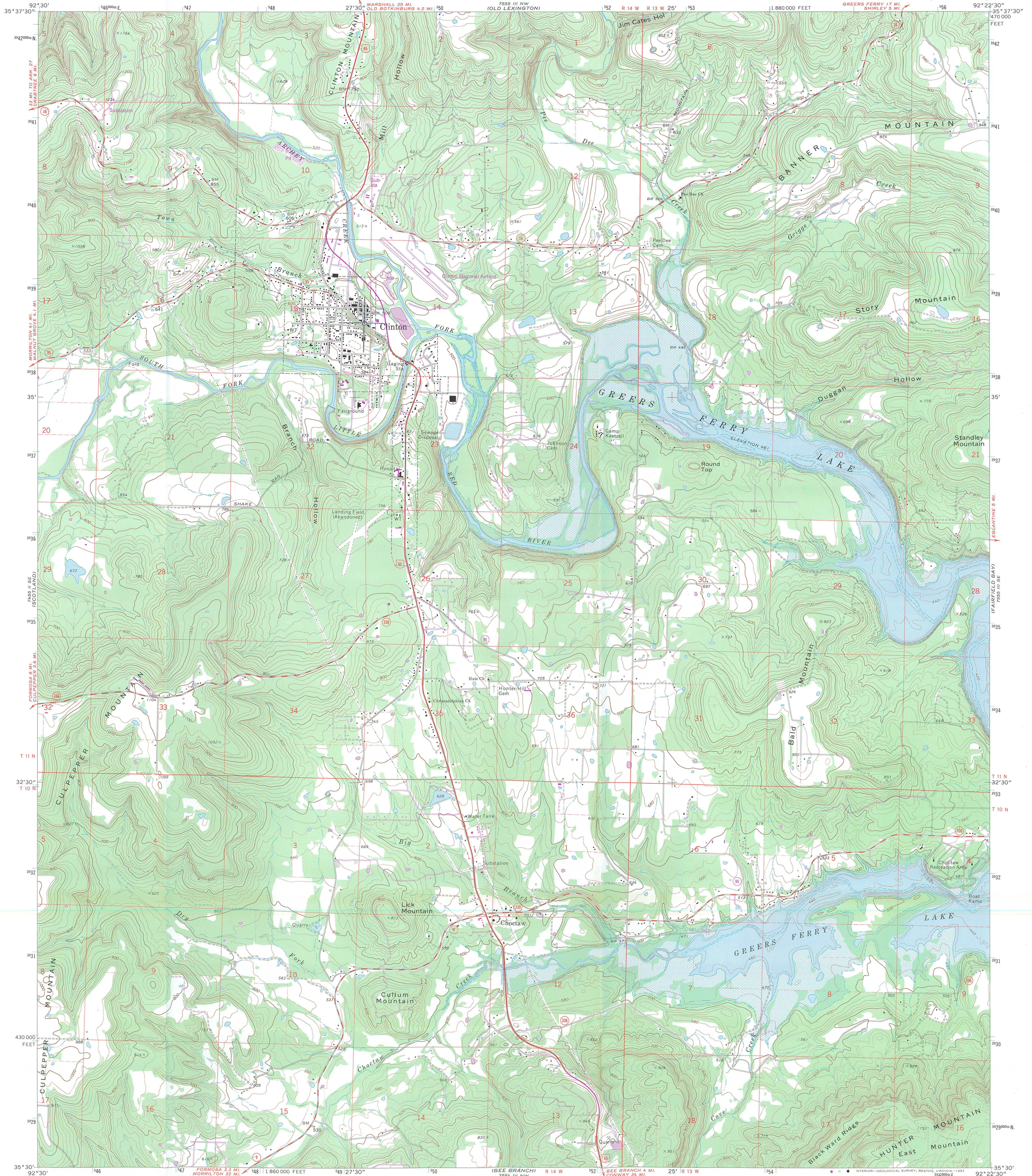
1. Walter Patterson Filling Station
2. Van Buren County; Clinton, Arkansas
3. Kara Mills
4. 05/00
5. AHPP
6. Looking Northwest at the south & east elevations

Water Patterson Filling Station  
Clinton, Arkansas  
Van Buren County  
UTM References: 15 / 549160 / 3938560

UNITED STATES  
DEPARTMENT OF THE INTERIOR  
GEOLOGICAL SURVEY

STATE OF ARKANSAS  
GEOLOGICAL COMMISSION  
LITTLE ROCK  
(OLD LEXINGTON)

CLINTON QUADRANGLE  
ARKANSAS-VAN BUREN CO.  
7.5 MINUTE SERIES (TOPOGRAPHIC)



Mapped, edited, and published by the Geological Survey

Control by USGS and NOS/NOAA

Topography by photogrammetric methods from aerial photographs taken 1972. Field checked 1973

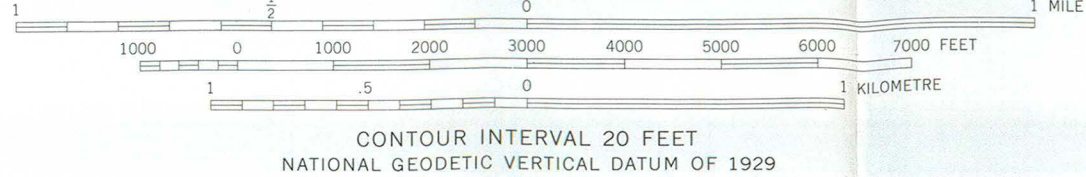
Underwater contours in Greers Ferry Lake from USCE maps dated 1939

Projection and 10,000-foot grid ticks: Arkansas coordinate system, north zone (Lambert conformal conic)

1000-metre Universal Transverse Mercator grid ticks, zone 15, shown in blue. 1927 North American datum

Areas covered by dashed light-blue pattern are subject to controlled inundation

To place on the predicted North American Datum 1983 move the projection lines 6 meters south and 14 meters east as shown by dashed corner ticks



ROAD CLASSIFICATION

Primary highway, hard surface	Light-duty road, hard or improved surface
Secondary highway, hard surface	Unimproved road

○ Interstate Route   ○ U. S. Route   ○ State Route

THIS MAP COMPLIES WITH NATIONAL MAP ACCURACY STANDARDS FOR SALE BY U. S. GEOLOGICAL SURVEY, DENVER, COLORADO 80225, OR RESTON, VIRGINIA 22092 AND BY THE ARKANSAS GEOLOGICAL COMMISSION, LITTLE ROCK, ARKANSAS 72204 A FOLDER DESCRIBING TOPOGRAPHIC MAPS AND SYMBOLS IS AVAILABLE ON REQUEST

Revisions shown in purple compiled from aerial photographs taken 1980. Map edited 1981 This information not field checked

CLINTON, ARK.  
N3530-W9222.5/7.5

1973  
PHOTOREVISED 1981  
DMA 7551 III SW-SERIES V884



The Department of  
**Arkansas  
Heritage**

**WE LOVE TO TELL  
THE STORY.**

Mike Huckabee, Governor  
Cathie Matthews, Director

Arkansas Arts Council

Arkansas Natural Heritage  
Commission

Arkansas Territorial Restoration

Delta Cultural Center

Old State House Museum



**Arkansas Historic  
Preservation Program**

1500 Tower Building  
323 Center Street  
Little Rock, AR 72201  
(501)324-9880

fax: (501)324-9184

tdd: (501)324-9811

e-mail:

[info@arkansaspreservation.org](mailto:info@arkansaspreservation.org)

website:

[www.arkansaspreservation.org](http://www.arkansaspreservation.org)

December 29, 2000

Carol D. Shull  
Chief of Registration  
United States Department of the Interior  
National Register of Historic Places  
National Park Service  
1849 C St. NW  
Washington, D.C. 20240

RE: Walter Patterson Filling Station, Clinton, Van Buren County

Dear Carol:

We are enclosing for your review the nomination of the above-referenced property. The Arkansas Historic Preservation Program has complied with all applicable nominating procedures and notification requirements in the nomination process.

Thank you for your consideration in this matter.

Sincerely,

Cathie Matthews,  
State Historic Preservation Officer

CM:km

Enclosures

An Equal Opportunity Employer

