

AnnualNarrative



FWSANV-0048

TOPPENISH NATIONAL WILDLIFE REFUGE

NARRATIVE REPORT

1966

U. S. DEPARTMENT OF THE INTERIOR

BUREAU OF SPORT FISHERIES AND WILDLIFE

TOPPENISH, WASHINGTON

PERMANENT PERSONNEL

Robert R. Prather ..... Refuge Manager  
(EOD - 8/8/66)

TEMPORARY PERSONNEL

Phillip A. Kerby ..... Laborer  
(6/29 - 9/28/66)

Harold W. Wright ..... Maintenceman I  
(EOD - 10/4/66)

## TABLE OF CONTENTS

General.....	1
Weather Conditions.....	1
Habitat Conditions.....	1
Water.....	1
Food and Cover.....	2
Wildlife.....	2
Migratory Birds.....	2
Swans.....	2
Geese.....	2
Ducks.....	3
Other Water & Marsh Birds.....	4
Shorebirds, Gulls & Terns.....	4
Doves.....	4
Upland Game Birds.....	4
Ring-necked Pheasant.....	4
California Quail.....	4
Chukar Partridge.....	4
Big Game Animals.....	4
Fur Animals, Predators, Rodents & Others...	5
Hawks, Eagles, Owls, Crows, Ravens & Magpie	5
Other Birds.....	5
Fish.....	5
Reptiles & Amphibians.....	5
Disease.....	6
Refuge Development & Maintenance.....	6
Physical Development.....	6
Plantings.....	6
Aquatics and Marsh Plants.....	6
Trees and Shrubs.....	6
Upland Herbaceous Plants.....	6
Cultivated Crops.....	6
Collections and Receipts.....	7
Seed or Other Propagules.....	7
Specimens.....	7
Control of Vegetation.....	7
Planned Burning.....	7
Fires.....	7
Resource Management.....	7
Grazing.....	7
Haying.....	7
Fur Harvest.....	7
Timber Removal.....	7
Commercial Fishing.....	7
Other Uses.....	8
Field Investigations or Applied Research.....	9
Public Relations.....	9
Recreational Use.....	9
Refuge Visitors.....	9
Refuge Participation.....	10

Hunting.....	11
Violations.....	11
SAFETY.....	12
Other Items.....	12
Items of Interest.....	12
Personnel.....	12
Land Acquisition.....	12
Opposition By Yakima Indians.....	13

TOPPENISH NATIONAL WILDLIFE REFUGE

NARRATIVE REPORT

1966

I. GENERAL

A. Weather Conditions. The following weather data was obtained from the official weather station operated by the U. S. Post Office at Sunnyside, Washington, located 25 miles east of refuge headquarters.

	<u>Snowfall</u>	<u>Precipitation</u>		<u>Max.</u> <u>Temp.</u>	<u>Min.</u> <u>Temp.</u>
		<u>This Month</u>	<u>Normal</u>		
January	T	0.59"	0.89"	55	20
February		0.05	0.66	62	18
March		0.28	0.48	80	19
April		T	0.42	82	27
May			0.51	98	36
June		0.64	0.84	94	36
July		1.03	0.18	98	48
August			0.21	98	42
September		0.64	0.35	96	42
October		0.27	0.72	81	29
November		2.49	0.76	66	24
December	8"	0.97	0.88	56	22
Total	8"	6.96"	6.90"	Extremes 98	18

The most notable weather condition for the year was the extremely mild fall and winter. Warm temperatures kept all waters open except for a brief period in mid-November. Snow fell on only three days, in December, and quickly melted. More waterfowl remained in the area longer than normal with large numbers of pintail, widgeon and green-winged teal remaining through the end of the year. The usual influx of lesser Canada geese did not occur due to the similarly mild weather in the Columbia Basin.

B. Habitat Conditions.

1. Water. Water conditions in the summer and fall were very poor due to lack of development and maintenance of existing facilities. A total of 1½ miles of Toppenish Creek lies within the boundary of the portion of the refuge which has thusfar been acquired. This creek provides relatively poor habitat due to steep banks and dense growths of willows and roses. A small pond and marshy area, covering about 15 acres in Tract 96, was filled early in September, with the cooperation of a family of beavers, and received good use by resident ducks.

Repairs were attempted on the dilapidated wooden dams and washed out dikes, formerly used to flood portions of Tract 96 for use as a gun club, but were unsuccessful.

The supply of irrigation water from the Bureau of Indian Affairs' Wapato-Satus Project was adequate and was handled entirely by refuge permittees.

2. Food and Cover. Natural waterfowl food was in scarce supply on the refuge with only a little Japanese millet and some smartweeds occurring along the ditches and in other wet areas.

The only grain crop provided for waterfowl use by the refuge was a 7 acre patch of barley on Tract 64, Upper Toppenish Unit, which was farmed by a permittee on a share basis. At the close of the year no use by waterfowl had occurred. The abundance of unharvested corn in nearby fields no doubt contributed to the lack of utilization of the refuge crop. The 40 acres of corn stubble on Tract 153, Satus Unit, received heavy use by mallards in November and early December.

Considering the overall waterfowl population of the Yakima Valley, which peaked at over 350,000 ducks in December, the contribution which the refuge made toward their food supply was insignificant.

## II. WILDLIFE

### A. Migratory Birds.

#### 1. Waterfowl.

Swans. A few migrant whistling swans are known to have passed through the area but no use of the refuge was observed. A crippled swan was picked up on November 21 on the Lower Toppenish Unit. The local newspaper printed a front page story and picture which resulted in favorable publicity for the refuge. The swan recovered and took to the wing about three weeks later. A flock of 10 swans was seen flying low over the headquarters area on December 13 looking for a place to land in the fog.

Geese. No record of goose use for the first half of the year is available although it is known that "several hundred" lesser Canada geese spent the late winter and spring along Toppenish Creek near refuge headquarters. The first geese observed in the fall were 5 white-fronts on the pond in Tract 96 on October 6. Fifteen white-fronts were present on the pond on October 14 but were not seen after the opening of the waterfowl hunting season on the following day. Two lesser Canada geese were with the white-fronts on the last two days before the opening of the season. No known use of the refuge has occurred since then. A few small flocks of Canada geese arrived

in the valley at the end of December but the usual late winter build-up was delayed by the mild weather in the Columbia Basin.

A few lesser snow geese were reported in the valley in mid-October but none were observed on the refuge.

Ducks. Upon the arrival of the refuge manager in early August, a population of 10 wood ducks, 50 mallards and a few green-winged teal was present along the creek in the Lower Toppenish Unit. The temporary laborer, who preceded the manager by 6 weeks, reported seeing two broods of wood ducks as well as a few mallard broods. The refuge population built up to only 610 ducks by October 15 and dropped off drastically with the opening of the waterfowl hunting season. The proximity of the gun clubs, including two clubs within the refuge on Indian land, kept all ducks out of the refuge. No point in the refuge was more than  $\frac{1}{4}$  mile from a gun club or open hunting area.

The greatest concentration of ducks observed on the refuge was a flock of 2,500 mallards in Tract 96 in early January 1967. This is mentioned in this report because of the immediate reaction which this use brought from the neighboring "7-11" Gun Club. They claimed that the refuge was holding "all" of the ducks and ruining their shooting. Threats to divert the creek away from the refuge were also heard.

A flock of about 3,000 mallards fed at night, in November and December, on the corn stubble in Tract 153.

The two State Game Reserves, which are within the approved boundaries of the refuge and are scheduled for acquisition, held the bulk of the waterfowl in the valley. A census of the Harrah Reserve (Upper Toppenish Unit) on November 10 showed a total of 15,000 ducks, mostly pintail and widgeon, while the Toppenish Reserve (Lower Toppenish Unit) held over 100,000 ducks, primarily mallards. The mid-winter census revealed 50,000 ducks on the Harrah Reserve and over 300,000 ducks on the Toppenish Reserve. These were 90% mallards, however, more pintail and widgeon were present than is normally expected.

The State Game Reserves provide the only sanctuary for waterfowl in the Lower Yakima Valley. These reserves are merely no hunting areas superimposed on private lands with the approval of the landowners. No waterfowl food crops or habitat improvement measures are taken by the State. Very few ponds are present with the only permanent water areas being the creek. The concentrations of ducks on the poor quality habitat is unbelievable and illustrates the potential for very high use of the refuge once enough land is acquired to permit a minimum amount of habitat development. Concentrations of over 400,000 mallards can be expected.

2. Other Water and Marsh Birds. This group was very poorly represented during the last half of the year. Coots maintained a rather stable population of about 50 birds through the fall and winter. Snipe were common during the last three months of the year. Sora rails were observed several times and are considered to be common. Great blue herons, black-crowned night herons and a few American bittern were the only herons observed. A few pied-billed and western grebes were seen on occasion on proposed refuge Tract 60 on the Upper Toppenish Unit, the only large, permanent body of water in the area.

3. Shorebirds, Gulls and Terns. The manager, after transferring from the Salton Sea Refuge, was somewhat amazed by the dearth of shorebirds, gulls and terns. This group was represented by only the killdeer which was abundant in the late summer and early fall. The development of waterfowl habitat should improve this situation somewhat.

4. Doves. No large concentrations of mourning doves were observed during the last half of the year although they could be considered as common. Hunting success in the area was only fair. An unusually large number of doves remained in the valley through the end of the year due to the exceptionally mild weather. Flocks of 20 - 30 doves were observed several times in December.

#### B. Upland Game Birds.

1. Ring-necked Pheasant. The pheasant population is high with an estimated 100 birds using the relatively small refuge area. An influx of pheasants was noted with the opening of the hunting season on October 15. Habitat conditions are excellent with good cover provided by fencerows overgrown with wild roses and the productive pasture and wild haylands.

2. California Quail. This species is abundant with an estimated population of 400 birds. As with the pheasant, the habitat is in good condition and well suited for quail. Extensive use of sagebrush and cheatgrass areas is noted.

3. Chukar Partridge. The only use of the refuge by chukars was during the dry summer months when daily treks to the creek were made by two small flocks in the headquarters area. The chukars reportedly suffered a heavy winter kill two years ago but are making a good recovery.

C. Big Game Animals. No deer were observed during the last half of the year but have been seen on all units in previous years. A few deer are known to reside permanently in the Satus Unit along the Yakima River. This area has not yet been acquired.

D. Fur Animals, Predators, Rodents and Other Mammals. A few beaver, mink, weasel, muskrat and possibly otter, occur along Toppenish Creek but have received heavy trapping pressure prior to acquisition of the area by the bureau. These populations are expected to increase.

The coyote, also trapped and hunted extensively, is abundant in spite of this persecution. Coyotes are commonly observed near refuge headquarters and can be heard singing almost every night and morning. No sheep are in the area and little concern is shown by neighboring cattle ranchers who seem to recognize the 'mousing' qualities of this predator. No bobcats, or sign of this species, have been observed. An occasional mountain lion is known to travel through the area.

E. Hawks, Eagles, Owls, Crows, Ravens and Magpies. The species of hawks most commonly observed are the red-tailed, marsh, rough-legged and sparrow hawks. A mature bald eagle was seen flying over the Upper Toppenish Unit on December 28.

Great-horned and short-eared owls have been common throughout the period. A saw-whet owl was in the headquarters orchard on August 28. As throughout the rest of the northwest, the snowy owl was observed or reported many times this winter. Several specimens are known to have ended up in the taxidermy shops.

A flock of about 600 crows has frequented the Lower Toppenish Unit during the year and no doubt took their share of corn in neighboring fields. Magpies also are abundant with an estimated 400 birds using the refuge.

F. Other Birds. No unusual observations were made. The appearance of a Harris' sparrow at the manager's feeder on November 10 may be noteworthy. A total of 71 species of birds has been observed since early August and makes up the beginning of the refuge bird list.

G. Fish. Little is known of the refuge fish population at this time. Carp have been observed in large numbers in the one small pond in Tract 96 and in Snake Creek. Carp and some species of catfish occur in Toppenish and Satus Creeks. At one time the trout fishing in these streams is said to have been good. Warming and silting have occurred through use of the creeks as drainage ditches. A few steelhead still reportedly migrate up Toppenish and Satus Creeks.

H. Reptiles and Amphibians. Very few observations made except for a few bullsnakes around headquarters. Rattlesnakes are known to occur in the area. A small rattler was found in Quarters #1 on the Lower Toppenish Unit. New interlocking metal thresholds have since been installed. Many tree toads (*Hyla sp.*) were seen in the headquarters area, and could be heard singing through December. Further

evidence of a very mild winter.

I. Disease. Nothing to report.

### III. REFUGE DEVELOPMENT AND MAINTENANCE

A. Physical Development. Development and maintenance activities during the short period of management of the refuge consisted mainly of cleanup of junk acquired with the Davis Tract and removal and replacement of  $1\frac{1}{2}$  miles of boundary fence. Posting of Tracts 96, 96a, 97 and 97a was completed prior to the opening of the hunting season. In addition to the boundary fence,  $\frac{3}{4}$  mile of interior fencing on Tract 96a was removed.

A full-time laborer was hired in June, prior to the arrival of the refuge manager, to attempt to restore the landscaping at the Davis house (refuge headquarters) to its original luxuriant condition. Upon the arrival of the manager in early August the yard was in beautiful condition with about  $1\frac{1}{2}$  acres of lawn, shade trees and over 100 rose bushes. The attractiveness of the site was remarked on many times by the townspeople and the area will make a very nice headquarters once the old barns, sheds and corrals are removed.

The kitchen of Quarters #3, Lower Toppenish Unit, was remodeled with new prebuilt cabinets, formica counter tops and a new sink. The entire house was cleaned and painted, inside and out, by commercial firms. A new septic tank and drainfield were installed.

The refuge office was set up on the back porch of the manager's residence, Q-3, and opened for business. It is hoped that the small cabin (see photo) may soon be moved closer to the headquarters yard and converted into a temporary office.

#### B. Plantings.

1. Aquatics and Marsh Plants. None planted this year.
2. Trees and Shrubs. None planted this year.
3. Upland Herbaceous Plants. None planted this year.
4. Cultivated Crops. All crops grown on the refuge this year were farmed by permittees on a share or cash basis.

In the Upper Toppenish Unit a total of 37 acres of barley was grown on Tract 64 by permittee Dale Petty. The refuge share, due to the low yield, was 20%, or, 7 acres. An estimated yield of 1 ton per acre was harvested by the permittee with the poorer portion, estimated at  $\frac{1}{2}$  ton per acre, left standing as the government's share. Mr. Petty

has given up his permit for this tract and it appears that the best use for this rolling land may be improved pasture.

No crops were grown on the Lower Toppenish Unit.

On the Satus Unit, 80 acre Tract 153 was farmed by permittee Richard Schell on a cash basis with the permittee taking the entire crop. The north 40 acres of this tract was in sugar beets which yielded 28 tons per acre, an above average crop. The south 35 acres was in corn with a yield of 80 bushels per acre. This tract was grazed after harvest at no additional cost. A fee of \$1,620.00 was paid by the permittee for the use of this tract.

A definite need for green browse and grain crops has been shown since the close of the year. As the lesser Canada goose population has built up in early January the depredation on winter wheat has become a problem. It is hoped that at least a small acreage of browse can be provided on The Lower Toppenish Unit by next winter.

C. Collections and Receipts.

1. Seed or Other Propagules. None collected or received during the year.

2. Specimens. No specimens were collected during the year.

D. Control of Vegetation. No vegetative control measures were taken during the year.

E. Planned Burning. No planned burning was done during the year.

F. Fires. No fires occurred on the refuge during the year. There is a potential for grass fires in the dry summer months.

IV. RESOURCE MANAGEMENT

A. Grazing. Range conditions were varied with most of the refuge tracts in fairly good condition.

Tracts 12, 56, 61 and 64, a total of 240 acres on the Upper Toppenish Unit received grazing use. Tracts 12 and 64 were partially irrigated and received heavy use. These tracts are in fair condition, however, an extensive invasion by Canada thistle has occurred on Tract 12 and indicates a need for better management.

Tract 56 was grazed by trespass horses prior to the manager's arrival on the scene and was in no condition for further use during the fall and winter months. This is an unimproved tract of salt grass and sage. A new fence on the north and west sides has been constructed allowing for controlled grazing next year.

Tract 61 received heavy fall use and served as a catch pasture for Indian cattle coming in from the summer range on Toppenish Ridge.

A permit will be issued to the Indian Cattlemen's Association for use of the corralls and loading chute located in this tract. There was a great deal of concern by the Indians which have depended on the use of these facilities in the past that the Government would not let them continue this use in retaliation for the Tribes refusal to sell Indian lands for the refuge.

Grazing on the Lower Toppenish Unit was extensive with Tracts 96, 96a, 97 and 97a grazed as one unit. All use occurred in the fall after harvest of the wild hay. Range conditions were good with an overgrowth of intermediate wheatgrass being under-utilized on parts of the tracts due to it's unpalatability. The 40 acres in Tract 117, which was partially irrigated, was grazed and hayed.

The 720 acres which were grazed and hayed provided 772 AUMs of grazing. At a rate of \$2.50 per AUM this use resulted in a cash revenue of \$1,930.00.

B. Haying. Four special use permits were issued during the year for cutting wild grass hay and alfalfa. The wild hay was harvested in August and September while three cuttings of alfalfa were obtained through the season.

Tract 26, Upper Toppenish Unit, was the only tract having alfalfa and was under permit to the former owner, Mr. Lowell Greene. A great deal of difficulty has been experienced in obtaining hay weights and collecting the fees. Mr. Greene's permit will not be renewed.

A good stand of wild grass hay was taken from an estimated 180 acres on Tracts 96, 96a and 97a. A total of 207.6 tons was harvested from these tracts.

The 20 acres in Tract 117 which were hayed yielded 37.7 tons. This portion of the tract is irrigated.

Hay cut on the refuge by permittees was sold at a rate of \$6.25 per ton resulting in a total cash revenue of \$2,246.17,

C. Fur Harvest. None.

D. Timber Removal. None.

E. Commercial Fishing. None.

F. Other Uses. Three refuge houses were occupied by permittees. Quarters No. Q-3 was occupied by Dale Petty, the former owner. The house, located on the Upper Toppenish Unit, was rented at a rate of \$50.00 per month and was vacated on December 26. The house will be disposed of in the near future.

Quarters No. Q-1, on the Lower Toppenish Unit, was rented to permittee J. H. Chambers for use of one of his employees. The house was rented at a rate of \$60.00 per month and was also vacated on December 26. The house is now occupied by refuge employees.

The house on Tract 153 was included in the special use permit issued to Richard Schell. The kitchen and bathroom facilities were used part of the time by Mr. Schell's hired man who parked his pickup camper in the yard. This house is also to be disposed of in the near future.

Total cash revenue from the rental of houses amounted to \$1,672.00

Two special use permits were issued to permit access to gun clubs on Indian lands within the refuge. Mr. William Clarke was permitted access to proposed refuge Tract 40k and Messrs. M. G. Brown and Thomas F. Gleed were permitted access to proposed refuge Tract 102. These permits were issued without charge.

The Bureau of Indian Affairs was issued a five year permit for the construction and maintenance of a waste water disposal ditch on the north and east sides of Tract 97a. This is to allow drainage of newly levelled farmlands on proposed refuge Tracts 86 and 87. Included in this permit was the understanding that the refuge could utilize the drain water, at no cost, for flooding portions of Tract 97a.

#### V. FIELD INVESTIGATIONS OR APPLIED RESEARCH

No field investigations were made during the year.

#### VI. PUBLIC RELATIONS

A. Recreational Use. No recreational use of this new station occurred during the year. The proximity of the area to urban areas will no doubt result in moderate use as facilities are developed and the area becomes better publicized.

#### B. Refuge Visitors.

<u>Date</u>	<u>Name</u>	<u>Organization</u>	<u>Purpose</u>
8/8-10	Robert F. Russell	Assistant Regional Supervisor, Portland, Ore.	Orientation of new Refuge Manager

<u>Date</u>	<u>Name</u>	<u>Organization</u>	<u>Purpose</u>
8/10	M. Clair Aldous	Refuge Manager, McNary N. W. R.	Deliver forklift & misc. supplies.
8/10	Harold Hardesty	Regional Transport, Tule Lake N. W. R.	Deliver surplus railroad ties.
8/15-17	Donald Doughton	BSF&W, Realty Br. Portland, Ore.	Orientation of Refuge Manager
8/17-26	Harold Hardesty	Regional Transport Tule Lake N. W. R.	Deliver surplus railroad ties.
9/9	Robert F. Russell	Assistant Regional Supervisor, Portland.	Review Hunting Plan.
9/15	Terry Walker	Yakima County Sanitarian	Inspect sewage disposal system.
9/17	Mr. & Mrs. Vernon Ekedahl	Regional Supervisor, Portland, Oregon	Visit
9/26	Donald Nielson	Bur. of Indian Affairs, Yakima Agency	Disposal Ditch
11/18	Donald Lewis	Refuge Manager, Ruby Lake N. W. R.	Deliver IH 340 tractor.
12/1	Harold Hardesty	Regional Transport Tule Lake N. W. R.	Deliver TD-14A tractor.

In addition to the above, numerous visits were also made by the following:

Donald Doughton, BSF&W, Realty Branch, Portland, Oregon  
 Thomas Smith, BSF&W, Realty Branch, Portland, Oregon  
 Wm. Halstead, BSF&W, USCMA, Yakima, Washington  
 Charles Woods, BSF&W, Fish Screens Superintendent, Yakima, Wash.  
 Don Nielson, BIA, Yakima Agency, Toppenish, Washington  
 Wm. Cramer, Washington Game Department, Game Protector, Toppenish,  
 Washington.

C. Refuge Participation. Refuge Manager Prather participated in the following meetings:

- 9/22-23 Law enforcement meeting with all Washington refuge managers and game management agents at Moses Lake, Washington.
- 9/26 Guest speaker at weekly meeting of Toppenish Chamber of Commerce.

- 10/11 Attended joint meeting of Toppenish and Sunnyside Toastmasters Club at Sunnyside, Washington.
- 10/14 Presented refuge hunting policy at the district meeting of the Washington Game Department, Yakima, Washington.
- 11/1 Attended Toppenish Junior Chamber of Commerce meeting in Toppenish.
- 12/6 Guest speaker at weekly meeting of Toppenish Rotary Club.
- 12/15 Attended Community Action Committee meeting at Glenwood, Washington in connection with Conboy Lake Refuge.

D. Hunting. The State's general hunting season opened on October 15 with an extended duck season ending on January 22. A bag limit of six ducks and the extension of shooting hours until one-half hour after sunset was in effect throughout eastern Washington. These rather liberal regulations, as compared to the rest of the Pacific Flyway, are intended to permit a greater harvest of the abundant mallards of the Columbia Basin.

Hunting was generally poor, including the well developed gun clubs, due to the mild weather. Only one good 'fog shoot' occurred during the season. The goose season ended on January 8 prior to the arrival of any numbers of geese.

No public hunting program was undertaken this first year of operation. A hunting program was prepared under the belief that the public would demand a hunting area regardless of the lack of facilities and waterfowl habitat. No pressure from the sportsmen was expressed however and it was decided not to open the area this year. This decision brought a strong reaction from the Washington Game Department, however, the line was held and little public reaction was heard during the season. Hunting pressure by the unattached hunter was very light. Virtually all of the land offering any opportunity for waterfowl hunting is posted and managed as private hunting clubs. According to State personnel there has been a great reduction in duck stamp sales in the county due to the lack of open hunting areas. All Tribal lands offering waterfowl hunting are leased to whites. The Tribe provides no public waterfowl hunting to Indians or anyone else. When a public hunting program is undertaken on the refuge increased support and interest from the unattached sportsman is to be expected.

E. Violations. No violations were observed by refuge personnel.

F. SAFETY. Regular SAFETY meetings were not held since only the refuge manager and one temporary man were on the staff at any one time. All jobs were discussed with SAFETY in mind, particularly the fencing project. No accidents occurred during the year, resulting in the start of a station SAFETY record with a total of 188 accident free days. SAFETY equipment, consisting of; protective goggles, fire extinguishers, first aid kits and seat belts for the vehicles was acquired.

#### VIII. OTHER ITEMS

##### A. Items of Interest.

1. Personnel. The first, and only, permanent personnel arrived at the Toppenish Refuge on August 4. Robert R. Prather, Refuge Manager, was granted a reprieve from his second tour of duty at the Salton Sea Refuge and adjusted well to the cool 95° temperatures of the Yakima Valley. Soon after his arrival he even learned to identify those big ducks with the green heads and white rings around their necks.

Preceding the arrival of the manager, Mr. Phillip A. Kerby was hired on a temporary appointment to care for the headquarters buildings and grounds. Mr. Kerby was terminated on September 28.

Mr. Harold W. Wright was given a temporary appointment on October 4 in order to accomplish some much needed fence repair and replacement. Mr. Wright had formerly worked for two summers at the Columbia Refuge and was well acquainted with our fence building requirements. His ability and hard work really took the pressure off and resulted in the construction of a total of 1½ miles of boundary fence. The appearance of a new, well built fence in the area brought much attention and favorable comment. More people were probably made aware of our presence by the fences than by the boundary signs. We are hoping that Mr. Wright can be given a long term appointment as his abilities as an equipment operator, welder, machinist, irrigator and all around handyman are certainly needed.

2. Land Acquisition. A total of 1,527.23 acres, 11.8% of the approved 12,810 acres, have been acquired at the end of the year. Of this total acreage which has been purchased, only 981.28 acres were in full control of the refuge. The remaining acreage was reserved by the former land owners for farming or ranching purposes for from 1 to 5 years. An additional 194 acres came under control on January 1, 1967 as three use reservations expired.

The scattered locations of the various tracts, as shown on the attached maps, makes any extensive development impossible at this time. About all that can be done under these circumstances is to renovate existing facilities, such as dikes and water control structures, and continue to operate as in the past by living up to commitments made to the former

landowners for haying, grazing and cooperative farming.

The only area under full control which shows any possibility for development at the present time is the block of land in the center of the Lower Toppenish Unit. Here, private inholdings of Indian lands, somewhat hamper operations and make the area of little value as a resting area during the fall and early winter due to the proximity of hunting activity.

3. Opposition by Yakima Indians. Strong opposition to the Toppenish Refuge by the Tribal Council of the Yakima Indian Nation continues to be heard. Acquisition of Indian-owned lands by the Bureau is essential to the development of the refuge. Over 75% of the land to be included in the refuge is presently Indian-owned. Approval by the Tribal Council must be obtained by the individual Indians before they can obtain the deeds to the land and sell. Normally it is a simple process for an Indian who is judged capable of handling his own affairs to obtain the deed to the land he is occupying. Suddenly, however, all of the Indians having lands within the approved boundary of the refuge are incapable.

No pressure is being put on the Tribal Council at this time to allow them to consider the problem thoroughly, and perhaps, be swayed by our conduct of operations on lands we have been able to acquire.

At the September 28 meeting of the Toppenish Chamber of Commerce, Refuge Manager Prather presented the refuge program. In attendance were four members of the Tribal Council. Great surprise was expressed by their spokesman that the refuge was actually in existence and in the process of being staffed. They were also greatly concerned over the fact that the refuge was present in the Reservation without the approval of the Tribe. Apparently they thought that they had effectively blocked the establishment of the refuge.

Support for the refuge is general throughout the rest of the community, primarily because of the recreation potential in the form of public hunting. Cooperation by the Bureau of Indian Affairs has been excellent in spite of the attitude of the Tribal Council.

One of the ramifications of this situation has been the awkward position which the Fort Simcoe Job Corps Conservation Center has been placed in. The Job Corps is supposed to have work projects for other agencies, in addition to the BIA, and are anxious for the diversified projects available on the refuge. They cannot, however, operate on the refuge as long as the Tribal Council is in opposition.

We are hoping that some glimmer of hope will shine through during the coming year which will permit the acquisition of Indian lands and allow for the orderly development of this important refuge.

Respectfully submitted:

*Robert R. Prather*

Robert R. Prather  
Refuge Manager

January 31, 1967

Approved by: \_\_\_\_\_

Quarters No. 3, Lower Toppenish Unit. Refuge  
Manager's residence with office in back porch.

Cabin near headquarters which is to be remodeled  
for temporary use as office.





View of headquarters area from entrance road.  
Old sheds and corralls are to be disposed of.

Refuge oil house. No funds for construction.

Winter-feeding of refuge hay by Permittee Jensen.

Headquarters area and part of Lower Toppenish Unit  
from Toppenish Ridge. Headquarters is located in  
grove of trees on right.





Toppenish Creek as it enters proposed Tract 40Ac.  
A small number of wood ducks utilizes this area  
for nesting.

Toppenish Creek as it floods Indian road between  
proposed Tracts 57 and 60. This condition exists  
all year.

Part of mallard population estimated at over  
250,000 on State's Toppenish Reserve. Photo  
taken in proposed Tract 110 which is currently  
being negotiated for.





The only marshy area on the portion of the  
refuge which has been acquired thusfar.  
Tract 96a, Lower Toppenish Unit.

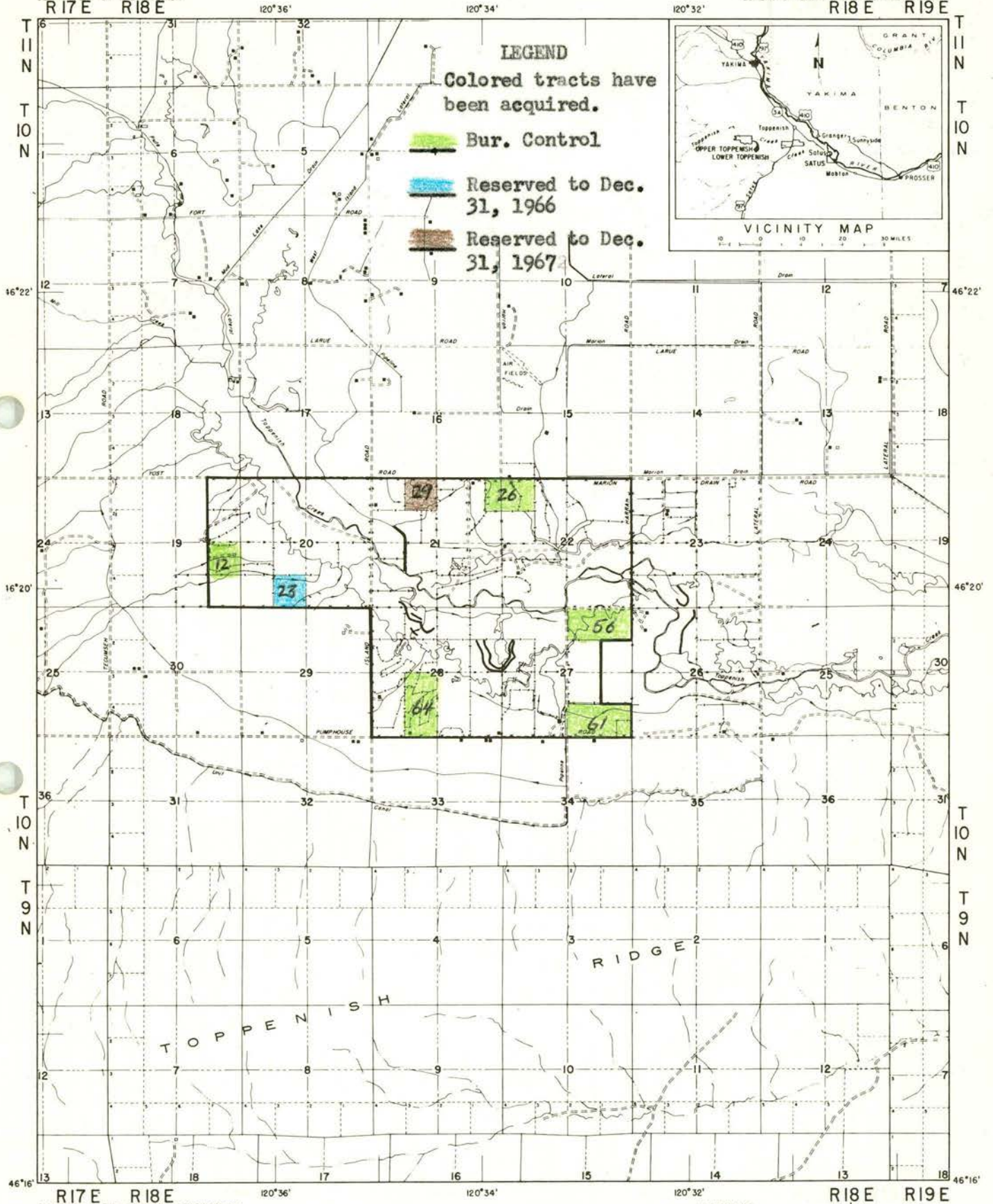
# TOPPENISH NATIONAL WILDLIFE REFUGE

UPPER TOPPENISH  
DIVISION

YAKIMA COUNTY, WASHINGTON

UNITED STATES  
DEPARTMENT OF THE INTERIOR  
R 17 E R 18 E

U. S. FISH AND WILDLIFE SERVICE  
BUREAU OF SPORT FISHERIES AND WILDLIFE  
R 18 E R 19 E



**LEGEND**  
Colored tracts have been acquired.

- Bur. Control
- Reserved to Dec. 31, 1966
- Reserved to Dec. 31, 1967



COMPILED IN THE BRANCH OF ENGINEERING  
FROM SURVEYS BY Aerial PHOTOGRAPHY,  
F&W S., B.L.M., U.S.G.S., AND U.S.D.I.A.

WILLAMETTE MERIDIAN



1	2	3	4	5	6	7	8	9	10
11	12	13	14	15	16	17	18	19	20
21	22	23	24	25	26	27	28	29	30
31	32	33	34	35	36	37	38	39	40
41	42	43	44	45	46	47	48	49	50

TOWNSHIP  
DIAGRAM



MEAN  
DECLINATION  
1962

# TOPPENISH NATIONAL WILDLIFE REFUGE

# LOWER TOPPENISH DIVISION




YAKIMA COUNTY, WASHINGTON

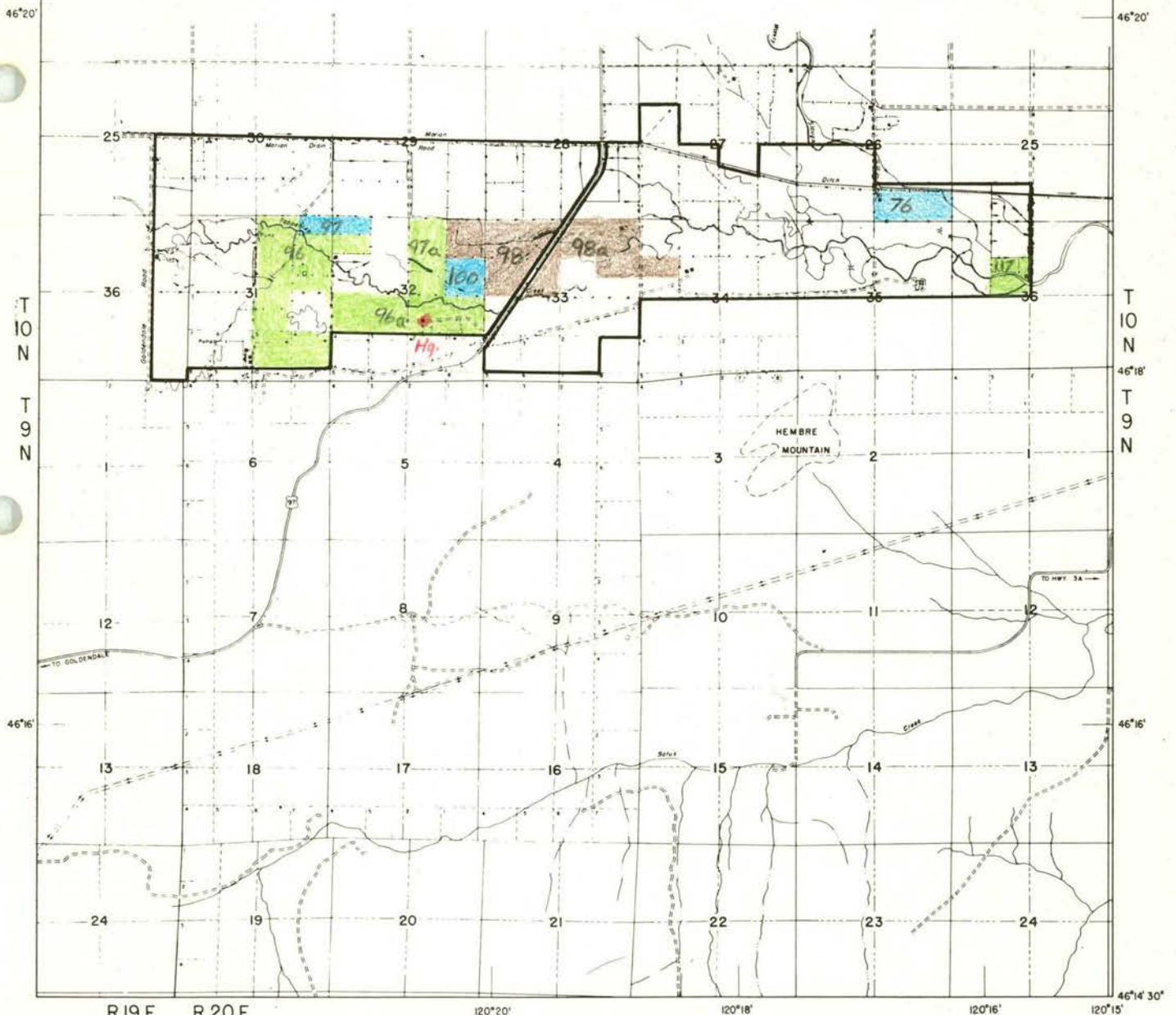
UNITED STATES  
DEPARTMENT OF THE INTERIOR

U. S. FISH AND WILDLIFE SERVICE  
BUREAU OF SPORT FISHERIES AND WILDLIFE

## LEGEND

Colored tracts have been acquired.

-  Bureau Control
-  Reserved to Dec. 31, 1966
-  Reserved to Dec. 31, 1967



COMPILED IN THE BRANCH OF ENGINEERING  
FROM SURVEYS BY AERIAL PHOTOGRAPHY,  
F&WS, BLM, USGS, USBIA AND  
WASH. ST. DEPT. OF HWYS.

PORTLAND, OREGON  
JANUARY, 1962  
REVISED 10-16-64

WILLAMETTE MERIDIAN



6	5	4	3	2	1
7	8	9	10	11	12
13	14	15	16	17	18
19	20	21	22	23	24
25	26	27	28	29	30
31	32	33	34	35	36

TOWNSHIP  
DIAGRAM



MEAN  
DECLINATION  
1962

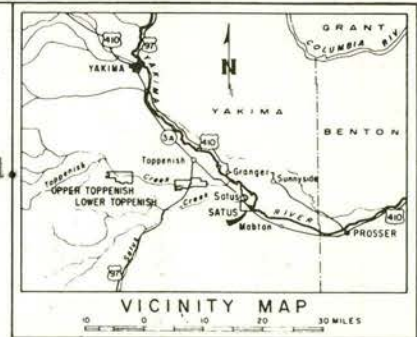
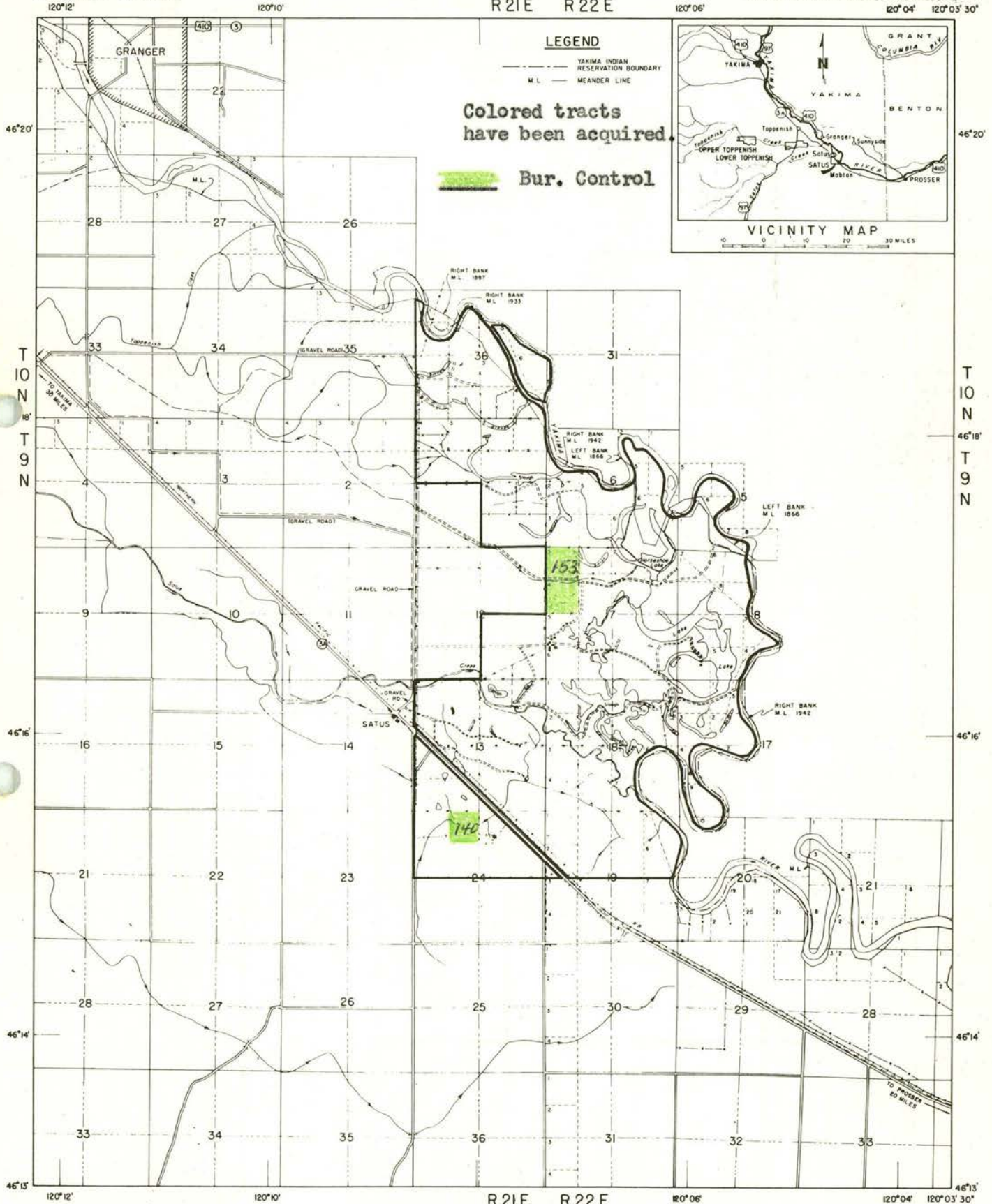
# TOPPENISH NATIONAL WILDLIFE REFUGE SATUS DIVISION

YAKIMA COUNTY, WASHINGTON

R21E R22E

UNITED STATES  
DEPARTMENT OF THE INTERIOR

U. S. FISH AND WILDLIFE SERVICE  
BUREAU OF SPORT FISHERIES AND WILDLIFE



COMPILED IN THE BRANCH OF ENGINEERING  
FROM SURVEYS BY AERIAL PHOTOGRAPHY,  
F.W.S., B.L.M., U.S.G.S., USBIA AND  
WASH. ST. DEPT. OF HWYS

PORTLAND, OREGON DECEMBER, 1961  
REVISED 10-16-64



Refuge Manager, Toppenish NW  
Refuge, Toppenish, Wash.

March 15, 1967

Acting Regional Supervisor, Division of  
Wildlife Refuges, Portland, Oregon

Narrative Report - 1966

We have reviewed your first narrative for the Toppenish Refuge with considerable interest. Considering your short tenure at the refuge and the limitations on clerical and other assistance, we feel you have done a very fine job on developing information for and preparing this report.

Since this is the initial report for this new station, we suggest that you prepare a short history statement to be included with the narrative report, covering such things as the establishment of the refuge, location, description, objectives, acquisition status, and so on. This need be only a page or two, but it would be helpful to those managers who follow you.

*George L. Wiseman*

George L. Wiseman

RRRussell:kd

*Russell*

3-1908

(July 1961)



Bureau of Sport Fisheries and Wildlife

INTER-OFFICE TRANSMITTAL

*x Ref o.k.  
Please insert in*

INSTRUCTIONS: Attach securely to material to be transmitted & mail through regular channels

To:	<input type="checkbox"/> Director, _____	<input type="checkbox"/> Regular Mail
	<input checked="" type="checkbox"/> Regional Director, <u>Portland, Oreg.</u>	<input type="checkbox"/> Air Mail
	<input type="checkbox"/> Project Leader, _____	<input type="checkbox"/> Action
	<input type="checkbox"/> _____	<input type="checkbox"/> Information

From	Office	Date
Refuge Manager	Toppenish NWR	3/8/67 <i>pc</i>

Subject

Revisions to Toppenish Narrative Report as requested by Mr. Russell.

*R. Pester*



UNITED STATES GOVERNMENT

# Memorandum

*Ref*

TO : Regional Director, Portland, Oregon

FROM : Refuge Manager, Toppenish Refuge,  
Toppenish, Washington

SUBJECT: Weather data - 1966 Narrative Report

DATE: February 10, 1967

The following normal precipitation figures were omitted from page one of the recently submitted narrative report rather than hold up submission of the report.

30 year average precipitation recorded at Sunnyside, Washington.

January	0.89
February	0.66
March	0.48
April	0.42
May	0.51
June	0.84
July	0.18
August	0.21
September	0.35
October	0.72
November	0.76
December	0.88
Annual	6.90

*Done  
cc*

*Robert R. Prather*  
Robert R. Prather





Handwritten notes or scribbles in the center of the page.

Faint, illegible text or a list of items, possibly a checklist or inventory.

A line of faint text, possibly a header or separator line.

Another line of faint text, possibly a date or reference number.

Faint text, possibly a name or title.

Faint text, possibly an address or location.

Faint text, possibly a phone number or contact info.

Faint text on the right side of the page.

Large, faint text at the bottom left, possibly a signature or official stamp.

These pages 8-11  
replaced by new  
ones sent in 3/4/67  
CE